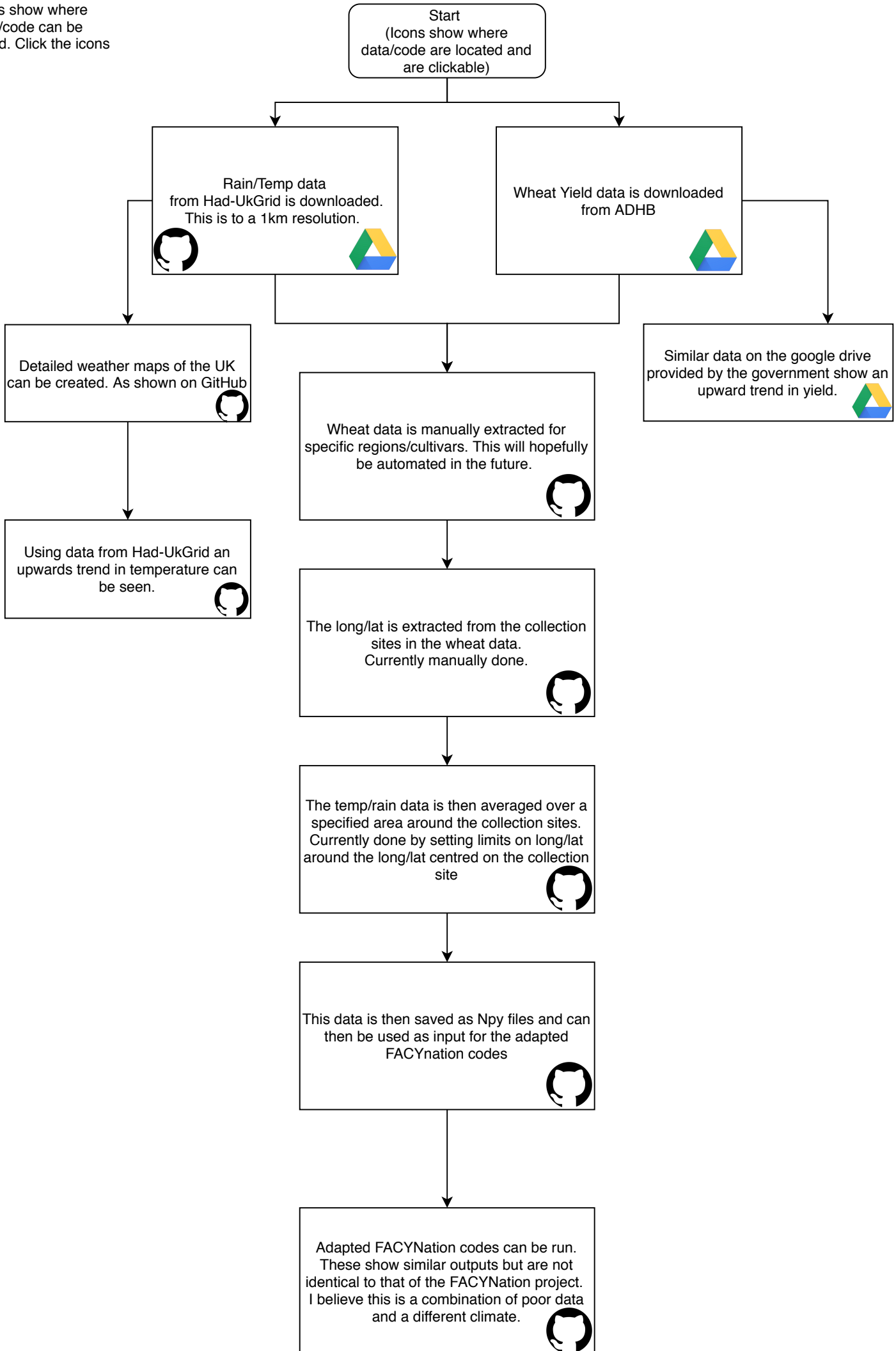


Icons show where data/code can be found. Click the icons



Start
(Icons show where data/code are located and are clickable)

Rain/Temp data from Had-UkGrid is downloaded. This is to a 1km resolution.

Wheat Yield data is downloaded from ADHB

Detailed weather maps of the UK can be created. As shown on GitHub

Wheat data is manually extracted for specific regions/cultivars. This will hopefully be automated in the future.

Similar data on the google drive provided by the government show an upward trend in yield.

Using data from Had-UkGrid an upwards trend in temperature can be seen.

The long/lat is extracted from the collection sites in the wheat data. Currently manually done.

The temp/rain data is then averaged over a specified area around the collection sites. Currently done by setting limits on long/lat around the long/lat centred on the collection site

This data is then saved as Npy files and can then be used as input for the adapted FACYNation codes

Adapted FACYNation codes can be run. These show similar outputs but are not identical to that of the FACYNation project. I believe this is a combination of poor data and a different climate.