

COVID-19 Weekly Report

Oregon's Weekly Surveillance Summary



Weekly Data Report - February 24, 2021

Table of Contents

Background	4
Weekly Report Summary	5
Clinical Characteristics and risk factors	6
Epidemiologic links	6
Figure 1. Epidemiologic link of recent COVID-19 cases by week of onset	7
Figure 2. Epidemiologic link of all COVID-19 cases by week of onset	8
Figure 3. Recent sporadic COVID-19 cases by race and week of onset.....	9
Figure 4. All sporadic COVID-19 cases by race and week of onset.....	10
Figure 5. Recent sporadic COVID-19 cases by ethnicity and week of onset	11
Figure 6. All sporadic COVID-19 cases by ethnicity and week of onset.....	12
Clinical symptoms and reported risk factors	12
Figure 7. Reported signs and symptoms for all COVID-19 cases	13
Figure 8. Reported symptoms among all COVID-19 cases by week of onset.....	14
Figure 9. Reported risk factors among all COVID-19 cases.....	15
Demographics	15
Geography.....	16
Figure 10. Case rates per 100,000 population, by county.....	16
Sex.....	17
Table 1. Severity and rates of COVID-19 by sex.....	17
Figure 11. Recent COVID-19 cases by sex and week of onset	18
Figure 12. All COVID-19 cases by sex and week of onset	19
Age	20
Table 2. Severity and rates of COVID-19 by age	20

COVID-19 Weekly Report

Oregon's Weekly Surveillance Summary



Figure 13. Recent COVID-19 cases by age and week of onset.....	21
Figure 14. All COVID-19 cases (counts) by age and week of onset	22
Figure 15. All COVID-19 cases (case rate per 100,000) by age and week of onset	23
Race.....	24
Table 3. Severity and rates of COVID-19 by race	24
Figure 16. Recent COVID-19 cases by race and week of onset	25
Figure 17. All COVID-19 cases (counts) by race and week of onset	26
Figure 18. All COVID-19 cases (case rates per 100,000) by race and week of onset	27
Ethnicity	27
Table 4. Severity and rates of COVID-19 by ethnicity.....	27
Figure 19. Recent COVID-19 cases by ethnicity and week of onset	28
Figure 20. All COVID-19 cases by ethnicity(counts) and week of onset.....	29
Figure 21. All COVID-19 cases by ethnicity (case rates per 100,000) and week of onset	30
Age-adjustment	30
Table 5. Ratio of age-adjusted rates of COVID-19 for cases, hospitalizations, and deaths by race.....	30
Table 6. Ratio of age-adjusted rates of COVID-19 for cases, hospitalizations, and deaths by ethnicity	31
Follow-up	32
Figure 22. Follow up attempted within 24 hours, % by race.....	32
Figure 23. Follow up attempted within 24 hours, % by ethnicity	33
Figure 24. Cases interviewed, by race	34
Figure 25. Cases interviewed, by ethnicity	35
Recovery.....	36
Figure 26. Time to recovery among symptomatic people with COVID-19.....	36
People with Intellectual and Developmental Disabilities.....	37
Weekly COVID-19 Hospitalizations (HOSCAP)	37
Table 7. Hospitals reporting 10 or more COVID-19 patients.....	37
Data are provisional and subject to change.	2

COVID-19 Weekly Report

Oregon's Weekly Surveillance Summary



Table 8. Hospitals reporting 1–9 COVID-19 patients.....	38
ZIP code.....	40

COVID-19 Weekly Report

Oregon's Weekly Surveillance Summary



Background

COVID-19 Weekly Report data will be finalized every Sunday at 11 p.m. PDT, and the report will be published on Wednesday. Please note that the data reported here are continually being updated. For daily up-to-date information, visit the OHA COVID-19 web page:

<https://govstatus.egov.com/OR-OHA-COVID-19>.

As of 11 p.m. Sunday, February 21, there have been 153,135 cases of COVID-19 reported to the Oregon Health Authority. Of these, 5,763 (3.8%) are “presumptive” cases—i.e., people with COVID-19-like symptoms and close contact with a confirmed case, but who did not have a confirmatory laboratory test. Though not confirmed, presumptive cases are highly likely to have COVID-19, given their specific symptoms and known exposure. Presumptive cases are encouraged to seek testing to confirm that they do have COVID-19. Presumptive cases who test positive are recategorized as confirmed cases.

These data represent a snapshot of COVID-19 risk factors and clinical and demographic characteristics of cases, and they include data on cases with pending investigations. Not all cases have been interviewed at the time of this report. The data shown in this report come from Oregon’s electronic disease surveillance system for reportable diseases.

During the week of February 14–February 20¹ 70,200 tests for COVID-19 were performed on Oregonians; of these, 3.5% had a positive result.² This figure represents a “test-based” method, whereby all electronic lab reports received by OHA are used to calculate percent positivity.³

Detailed tables of the number of tests and percent positivity can be found online at <https://public.tableau.com/profile/oregon.health.authority.covid.19#!/vizhome/OregonHealthAuthorityCOVID-19DataDashboard/OregonsCOVID-19ELRsbyCounty>

¹ This date range aligns with CDC’s “MMWR week.”

² Does not include antibody (serology) tests.

³ www.cdc.gov/coronavirus/2019-ncov/lab/resources/calculating-percent-positivity.html

COVID-19 Weekly Report

Oregon's Weekly Surveillance Summary



Weekly Report Summary

During Monday, February 15, through Sunday, February 21, 2021, OHA recorded 2,260 new cases of COVID-19 infection—a 35% decrease from last week's total, the third consecutive week of falling case counts, and the lowest total since the week of September 28–October 4, 2020. This occurred in the face of a 31% drop in testing. Test positivity was 3.5%—similar to last week's 3.4%. The number of patients newly hospitalized with COVID-19 fell 42% (from 272 to 159). Seventeen Oregonians died in association with COVID-19—down from 114 the previous week and the lowest death toll since the week of June 29–July 5, 2020. On February 17, the first Oregon child, an infant, died with COVID-19. Of the 153,135 cases reported in Oregon since the start of the pandemic, 2,155 have died—a case-fatality rate of 1.4%. Recent data on mortality in Oregon, including deaths associated with COVID-19, are available at <https://public.tableau.com/profile/oha.center.for.health.statistics>.

Hospitalization and death rates increase with age (Table 2). Although only 3.9% of Oregonians are 80 years of age or older, they have accounted for 1,683 (20%) of COVID-19-associated hospitalizations and 1,126 (52%) of COVID-19-associated deaths. Persons 70 years of age and older make up 12% of Oregon's population, but they have accounted for 3,423 (40%) of COVID-19 hospitalizations and 1,653 (77%) of COVID-19-associated deaths. Additional data are available at <https://public.tableau.com/profile/oregon.health.authority.covid.19#!/vizhome/OregonCOVID-19CaseDemographicsandDiseaseSeverityStatewide/DemographicData>.

Persons of Hispanic ethnicity continue to be disproportionately affected by COVID-19 (Table 4): they account for 13% of Oregon's population but 35% of cases of known ethnicity reported to date. This proportion has fallen from 30%–50% weekly during most of 2020 to <30% to date during 2021; however, the proportion with unknown ethnicity has risen from <20% before November to about 29% since then. Table 3 shows that the highest crude COVID-19 case-fatality rate (CFR)—1.9%—is among whites, with lower CFRs in other races. Similarly, Table 4 shows a lower CFR among Hispanics than among non-Hispanics. However, non-white and Hispanic populations in Oregon are younger overall, which lowers the crude CFRs in these racial and ethnic groups. Age adjustment displays how rates would compare if the age distribution of each racial and ethnic group resembled that of the population of the United States in the year 2000. Table 5 shows that COVID-19 hospitalization rates in non-white populations are 1.4 to 14.1 times those of whites and death rates 1.3 to 16 times those of whites. Table 6 shows that the age-adjusted hospitalization rate among Hispanics in Oregon is 4.3 times that of non-Hispanics and the death rate 3.3 times as high.

COVID-19 Weekly Report

Oregon's Weekly Surveillance Summary



Clinical Characteristics and risk factors

This section of the report describes the epidemiology of Oregon's COVID-19 cases, including indicators of COVID-19 transmission, common symptoms experienced by COVID-19 cases, and demographic breakdowns for sex, age, race, and ethnicity. Indicators of disease severity, specifically hospitalizations and deaths, are included in the tables.

Epidemiologic links

The figures below show the epidemiologic link of COVID-19 cases. Public health classifies all cases as part of a household, part of an outbreak, part of a cluster, a close contact of another case, or sporadic. Sporadic indicates that a case was not linked to a known source of COVID-19. Lower numbers of sporadic cases suggest lower community spread of COVID-19. Figure 1 focuses on recent cases of COVID-19, and allows for the easy comparison of different types of epidemiologic link. Figure 2 includes all COVID-19 cases, showing the pattern of epidemiologic links since the first cases were identified in Oregon. Figures 3 and 4 show sporadic cases by race, and figures 5 and 6 show sporadic cases by ethnicity. Looking at the data by race and ethnicity helps public health to identify disparities.

Epidemiologic link designations:

- Sporadic⁴ Cases who do not have known exposure to another case or outbreak.
- Outbreak: Cases who have a shared, defined exposure with at least one other case. For example, a defined exposure could be an event, a workplace, a congregate facility, etc.
- Cluster: Cases who had contact with another case, but the exposure is not well defined. For example, cases from two households who interacted many times prior to illness onset.
- Household: Cases who were exposed to another case in their household.
- Close contact: Cases who were exposed to another case, not in their household. This designation was added on 7/15.

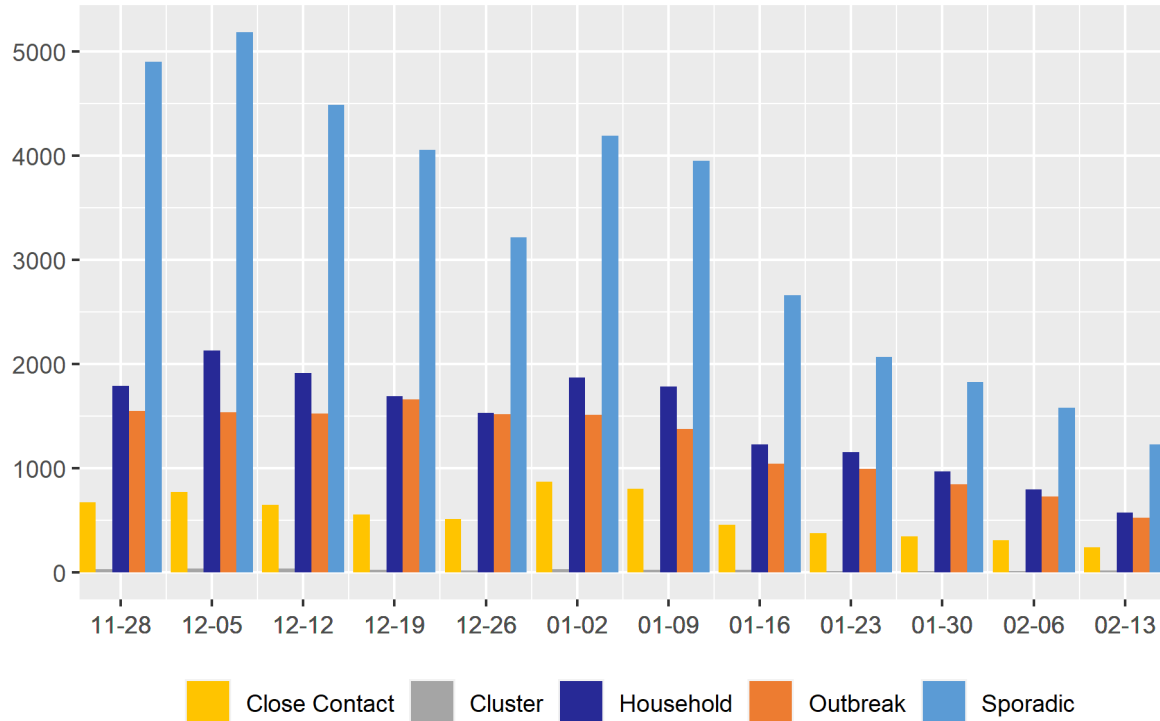
⁴ Due to the lag between case reporting and case investigation, the proportion of cases categorized as sporadic is high in the most recent week or more; some of these cases will be recategorized after investigation is completed.

COVID-19 Weekly Report

Oregon's Weekly Surveillance Summary



Figure 1. Epidemiologic link of recent COVID-19 cases by week of onset

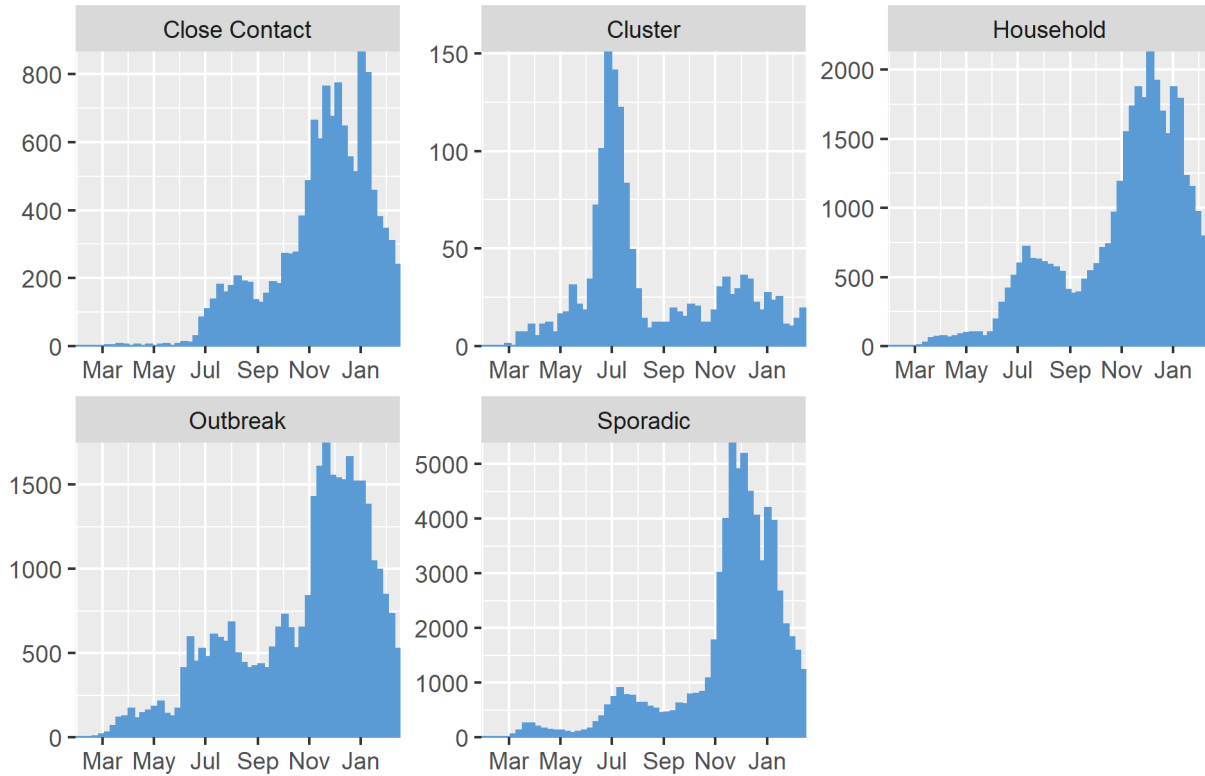


COVID-19 Weekly Report

Oregon's Weekly Surveillance Summary



Figure 2. Epidemiologic link of all COVID-19 cases by week of onset

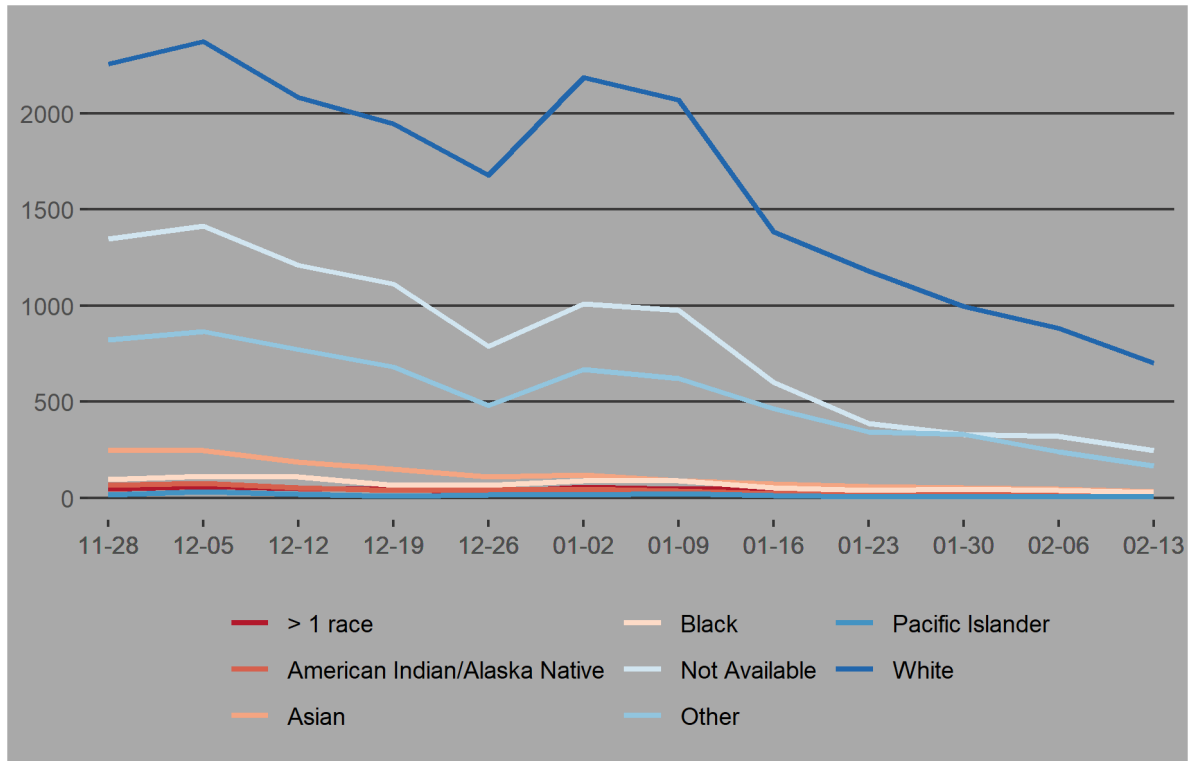


COVID-19 Weekly Report

Oregon's Weekly Surveillance Summary



Figure 3. Recent sporadic COVID-19 cases by race and week of onset



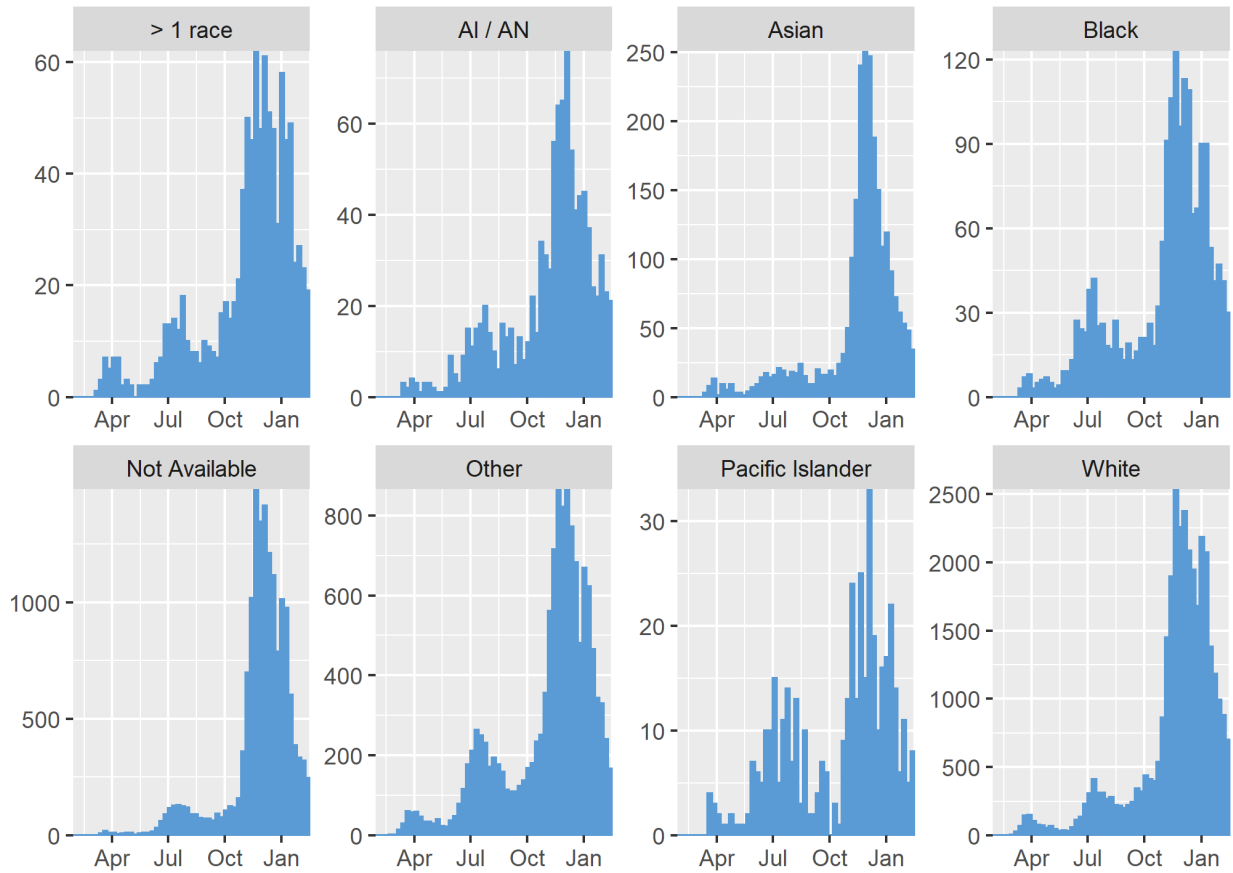
Data are provisional and subject to change.

COVID-19 Weekly Report

Oregon's Weekly Surveillance Summary



Figure 4. All sporadic COVID-19 cases by race and week of onset



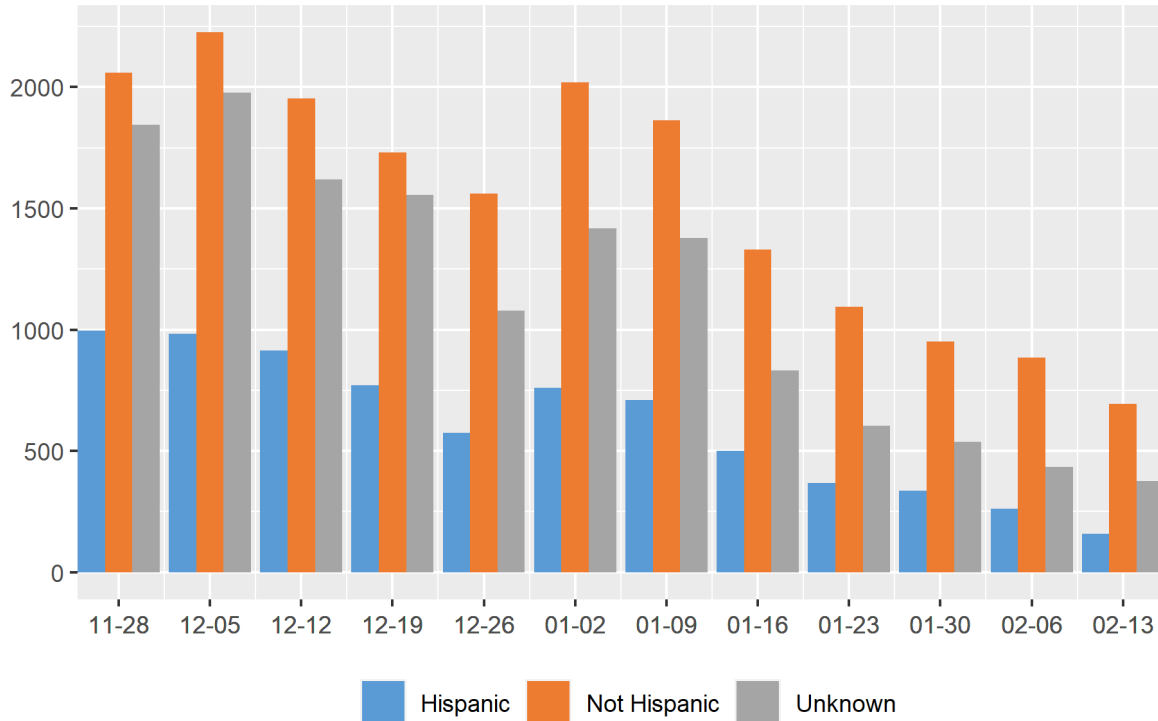
Data are provisional and subject to change.

COVID-19 Weekly Report

Oregon's Weekly Surveillance Summary



Figure 5. Recent sporadic COVID-19 cases by ethnicity and week of onset

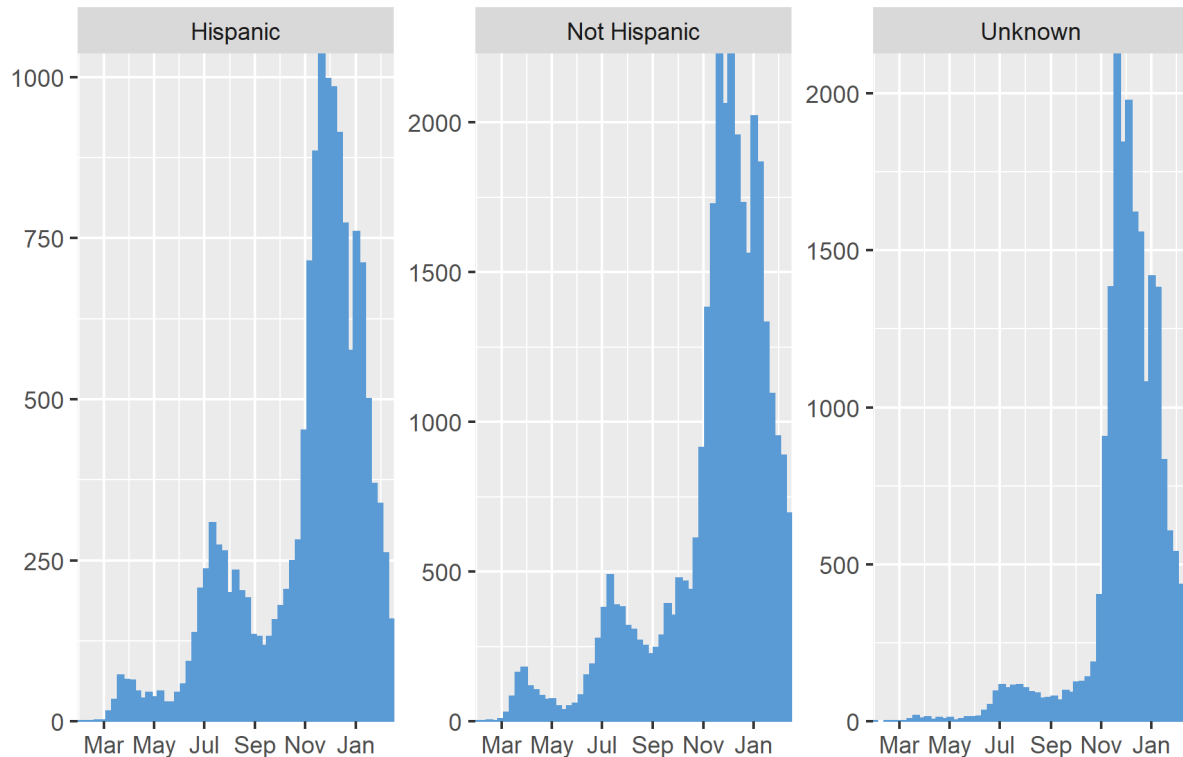


COVID-19 Weekly Report

Oregon's Weekly Surveillance Summary



Figure 6. All sporadic COVID-19 cases by ethnicity and week of onset



Clinical symptoms and reported risk factors

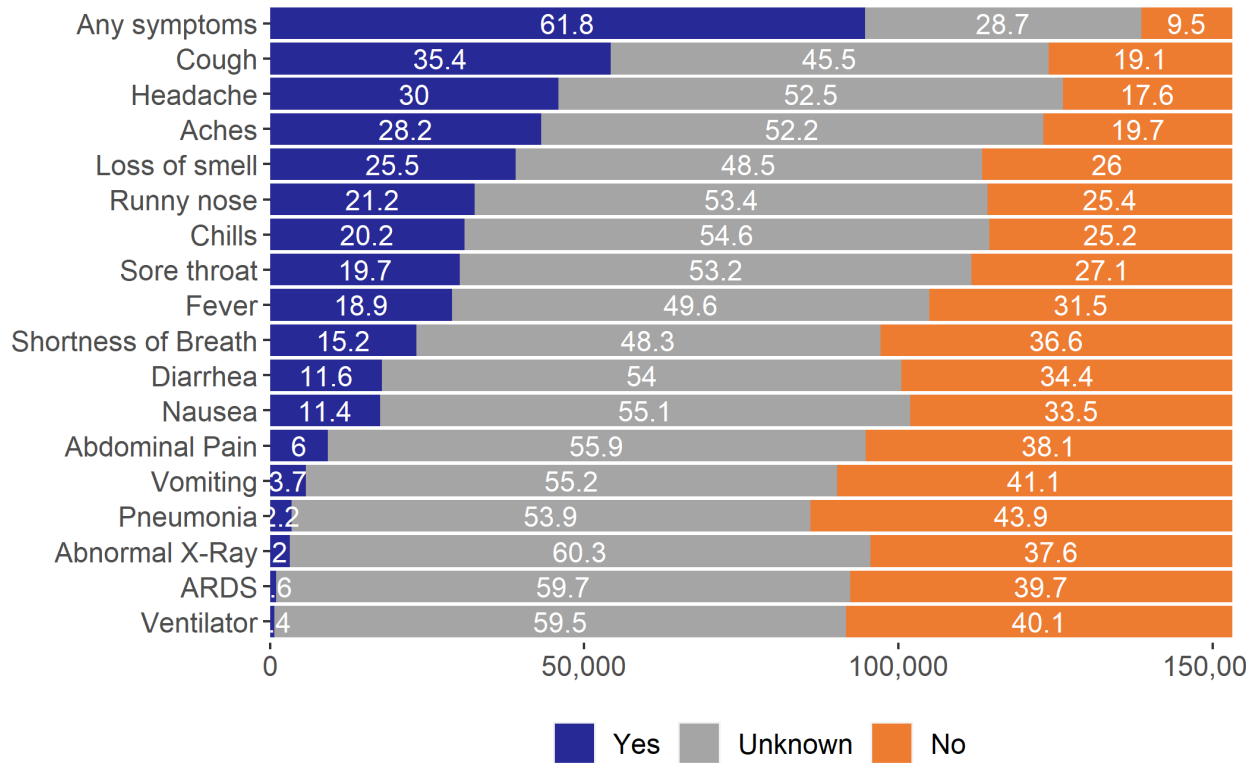
Figure 7 provides information on signs and symptoms from all COVID-19 cases. Of 153,135 cases, 94,667 (61.8%) reported having signs and symptoms of COVID-19. The most commonly reported symptoms are cough (n=54,176, 35.4%) and headache (n=45,879, 30%). Figure 8 provides information on the percentage of COVID-19 cases that report symptoms over time. Figure 9 provides information on risk factors from all COVID-19 cases. The most common risk factors are having contact with a known COVID-19 case prior to symptom onset (n=82,222, 53.7%) and having underlying medical conditions (n=84,273, 55%). Note that a person may report more than one sign/symptom or risk factor. Where displayed by week in this report, case data are categorized by week of reported symptom onset, not by date of case report. This results in reduced numbers in the most recent week or more due to reporting lags.

COVID-19 Weekly Report

Oregon's Weekly Surveillance Summary



Figure 7. Reported signs and symptoms for all COVID-19 cases

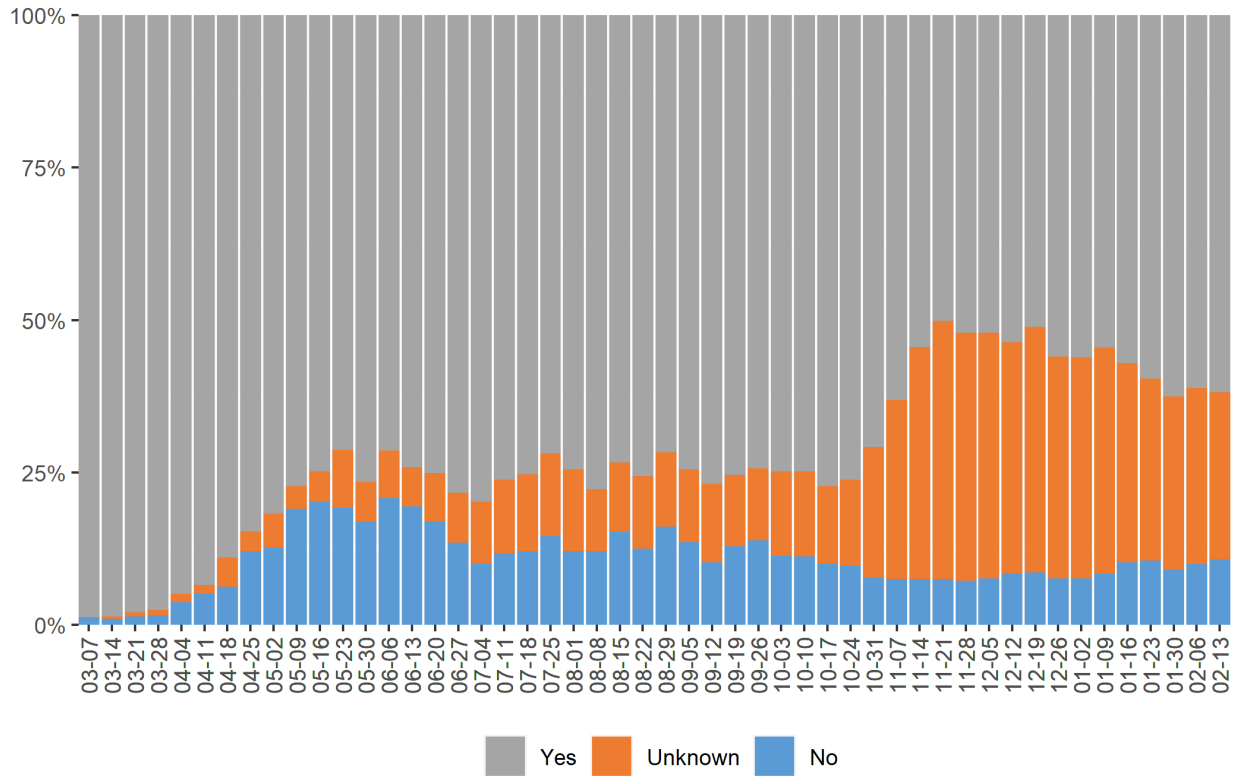


COVID-19 Weekly Report

Oregon's Weekly Surveillance Summary



Figure 8. Reported symptoms among all COVID-19 cases by week of onset

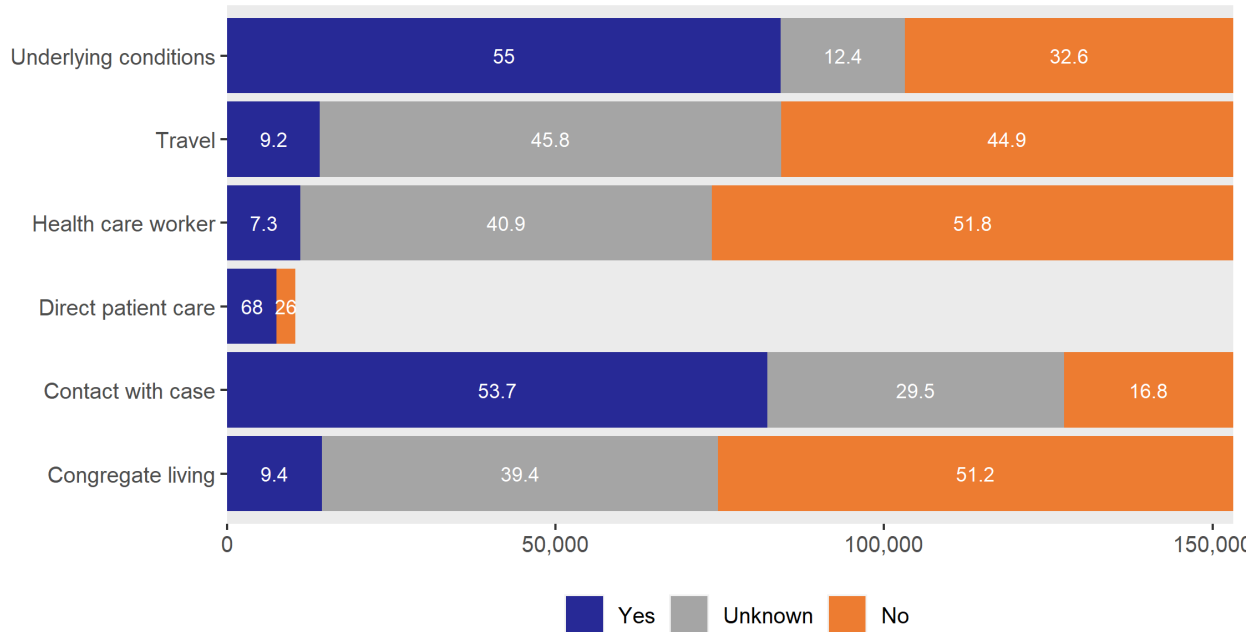


COVID-19 Weekly Report

Oregon's Weekly Surveillance Summary



Figure 9. Reported risk factors among all COVID-19 cases



Risk factor definitions:

- Congregate living situations include, but are not limited to, long-term care facilities, group homes, prisons, and shelters. Data include people with confirmed cases who live or work in congregate living situations.
- Direct patient care is only asked if a case is a healthcare worker or volunteer. The denominator is the number of healthcare workers or volunteers.
- Underlying medical conditions include cardiovascular disease, chronic liver disease, chronic lung disease, chronic renal disease, current or former smoker, diabetes mellitus, immunocompromised condition, neurologic and neurodevelopmental conditions, obesity, or other chronic diseases.

Demographics

The following tables and figures show the demographic characteristics for all COVID-19 cases. The tables show case counts, case rates, and indicators of severity by sex, age, race and

COVID-19 Weekly Report

Oregon's Weekly Surveillance Summary

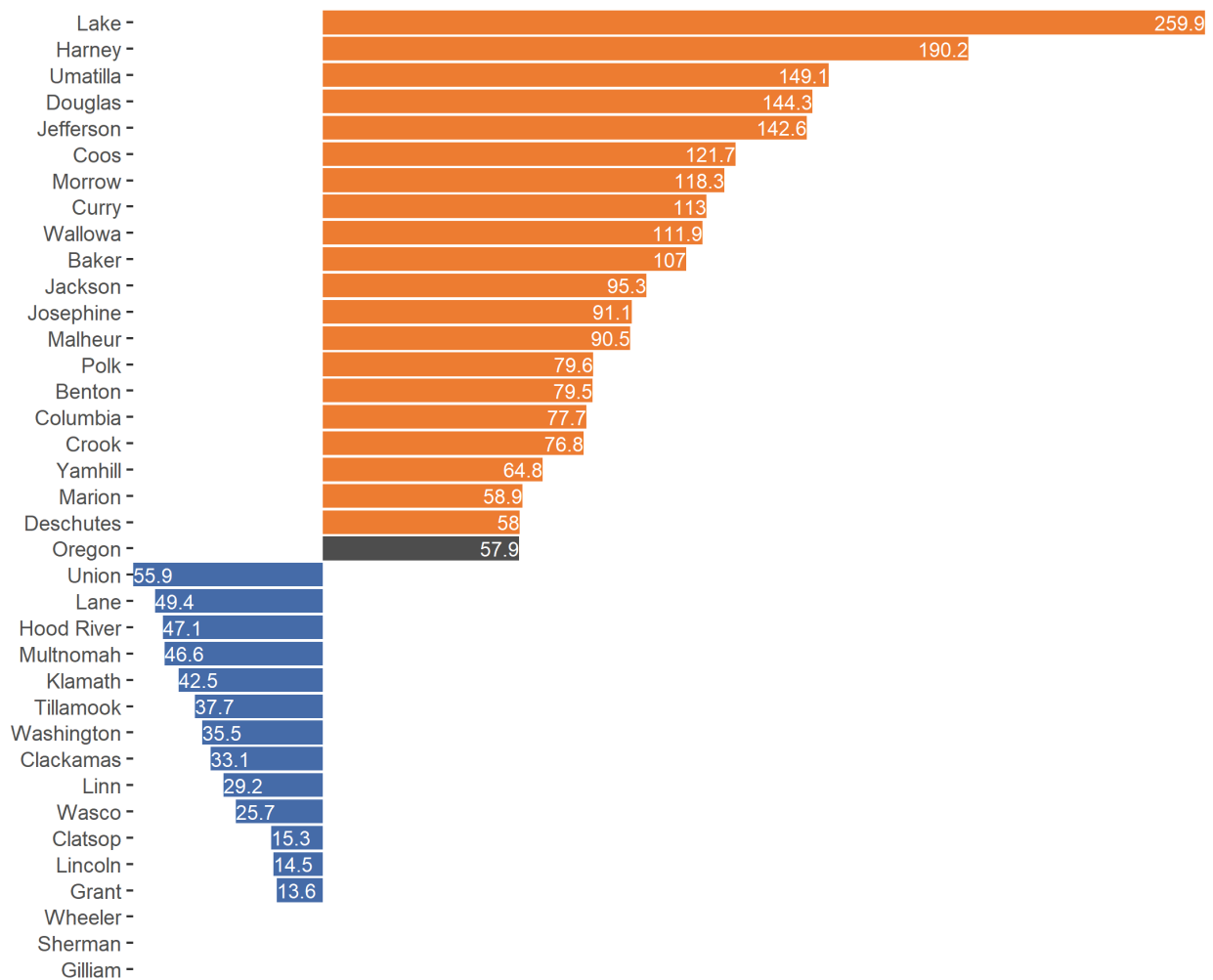


ethnicity. The figures show cases over time, by week of onset, for sex, age, race, and ethnicity. Figure 10 displays case rates by county, in comparison to the case rate for all of Oregon.

Geography

The following figure shows case rates by county for the most recently completed MMWR week, which is currently February 14, 2021 to February 20, 2021. Cases are displayed using the date that the case became known to public health.

Figure 10. Case rates per 100,000 population, by county



COVID-19 Weekly Report

Oregon's Weekly Surveillance Summary



1. Counties that had case rates above the case rate for the state are displayed in orange. Counties that had case rates below the case rate for the state are displayed in blue.
2. Counties that had zero cases in the time period displayed appear on the list, but do not have a bar to display.

Sex

Table 1. Severity and rates of COVID-19 by sex

Sex	Cases	% of total cases	Cases per 100,000	Hospitalized	% Hospitalized	Deaths	Case fatality
Female	77,984	51	3,626	3,970	5.1	1,014	1.3
Male	73,642	48	3,531	4,440	6.0	1,133	1.5
Non-Binary	12	0		0	0.0	0	0.0
Not Available	1,497	1		47	3.1	8	0.5
Total	153,135	100	3,615	8,457	5.5	2,155	1.4

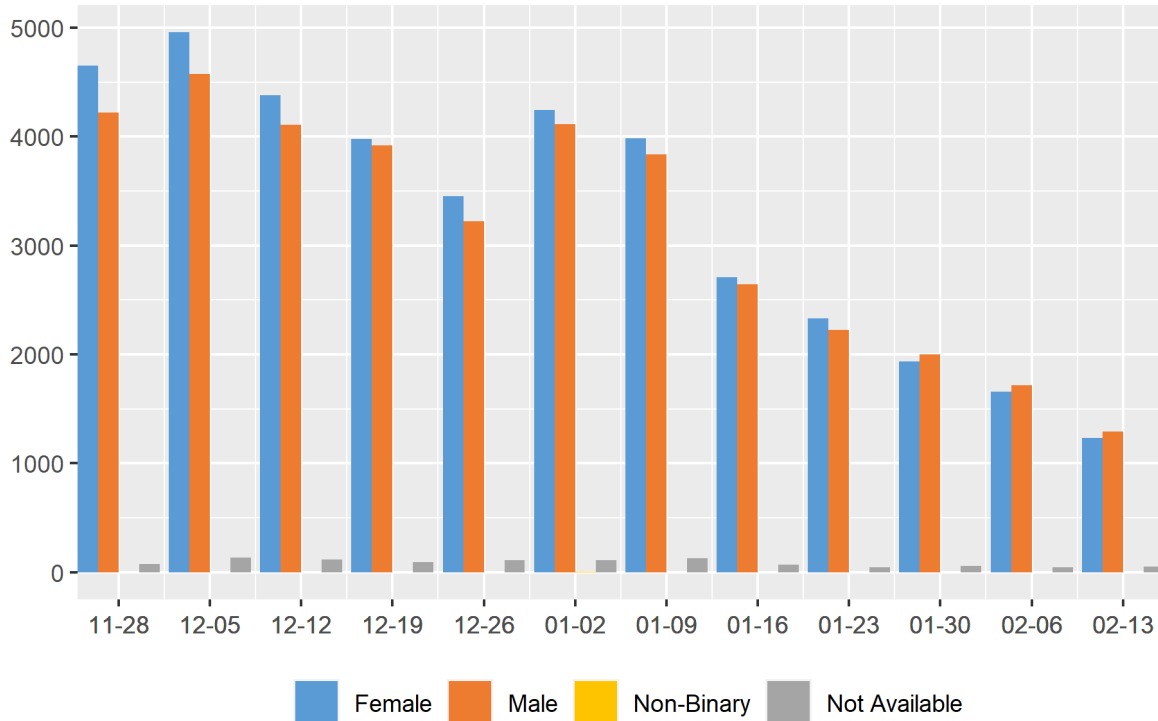
1. Population data were compiled from the 2019 Annual Oregon Population Report, which is produced by the Population Research Center, Portland State University

COVID-19 Weekly Report

Oregon's Weekly Surveillance Summary



Figure 11. Recent COVID-19 cases by sex and week of onset

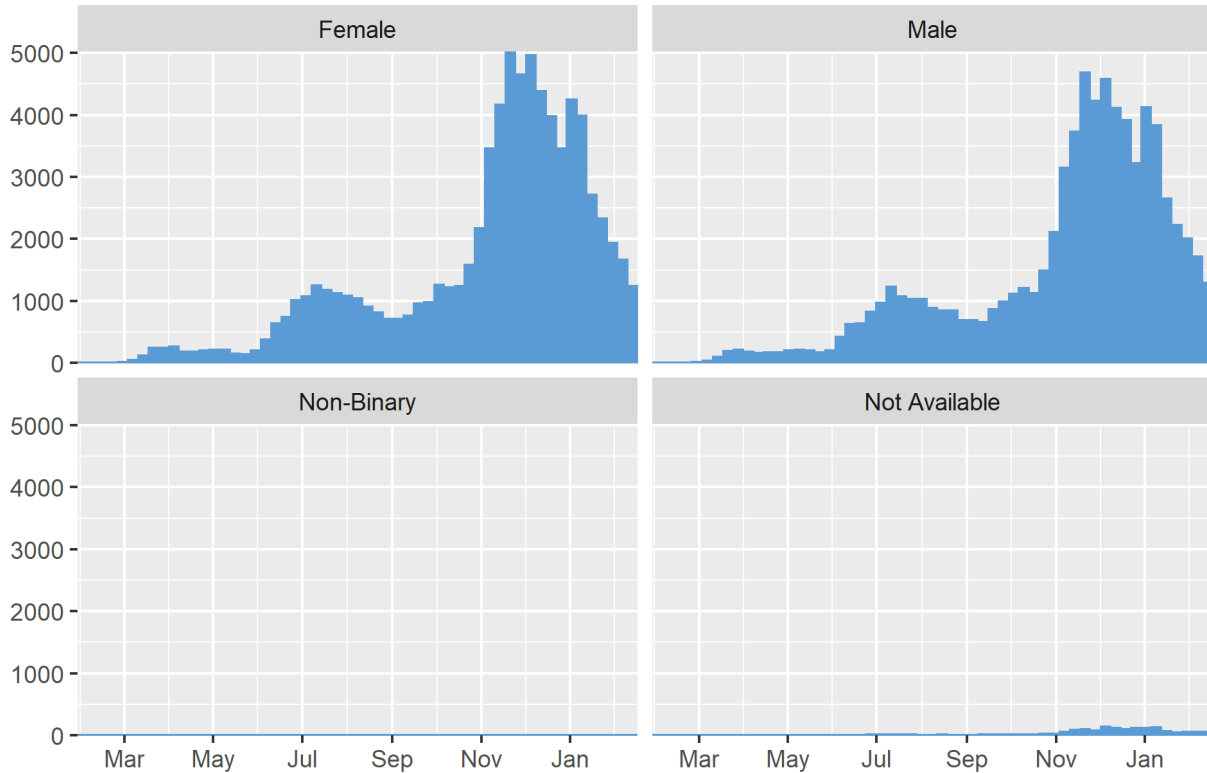


COVID-19 Weekly Report

Oregon's Weekly Surveillance Summary



Figure 12. All COVID-19 cases by sex and week of onset



COVID-19 Weekly Report

Oregon's Weekly Surveillance Summary



Age

Table 2. Severity and rates of COVID-19 by age

Age group	Cases	% of total cases	Cases per 100,000	Hospitalized	% Hospitalized	Deaths	Case fatality
0-9	7,849	5.1	1,635	96	1.2	1	0.0
10-19	16,136	10.5	3,248	130	0.8	1	0.0
20-29	32,215	21.0	5,802	498	1.5	4	0.0
30-39	26,637	17.4	4,602	612	2.3	18	0.1
40-49	23,712	15.5	4,364	853	3.6	40	0.2
50-59	19,605	12.8	3,664	1,231	6.3	129	0.7
60-69	13,115	8.6	2,431	1,592	12.1	309	2.4
70-79	7,741	5.1	2,276	1,740	22.5	527	6.8
80+	5,779	3.8	3,447	1,683	29.1	1,126	19.5
Not Available	346	0.2		22	6.4	0	0.0
Total	153,135	100.0	3,615	8,457	5.5	2,155	1.4

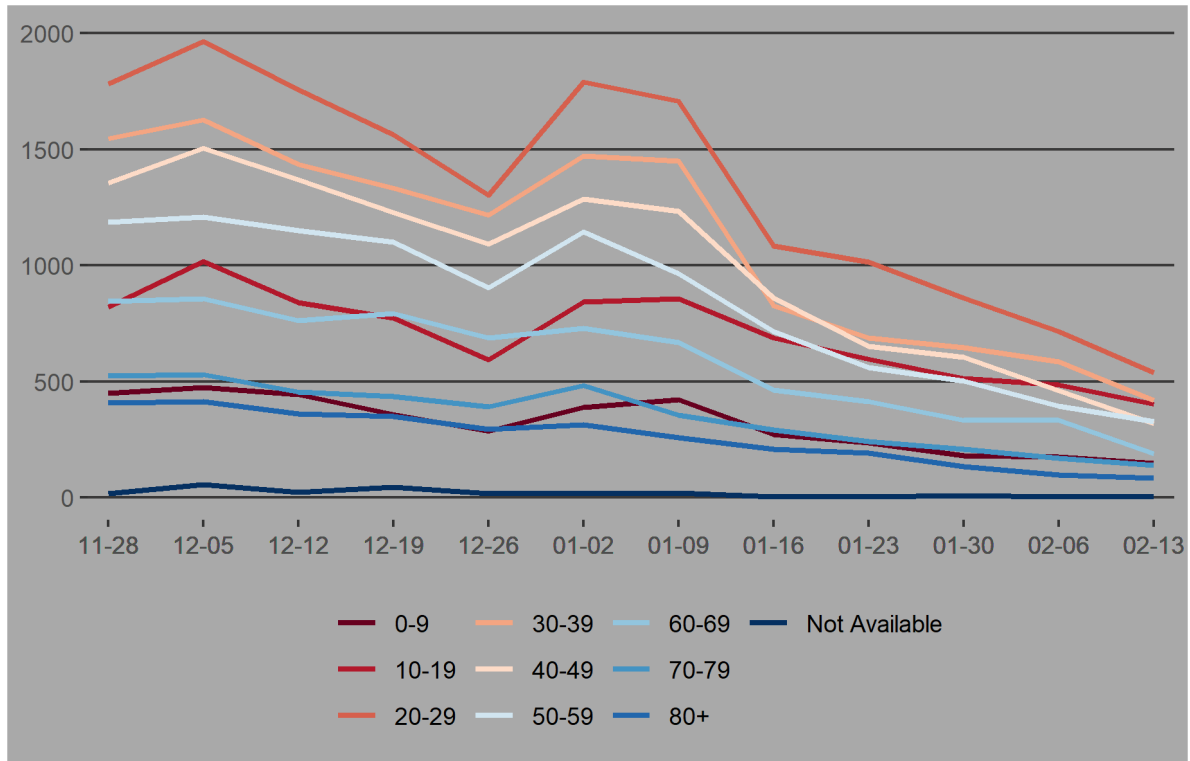
1. Population data were compiled from the 2019 Annual Oregon Population Report, which is produced by the Population Research Center, Portland State University

COVID-19 Weekly Report

Oregon's Weekly Surveillance Summary



Figure 13. Recent COVID-19 cases by age and week of onset

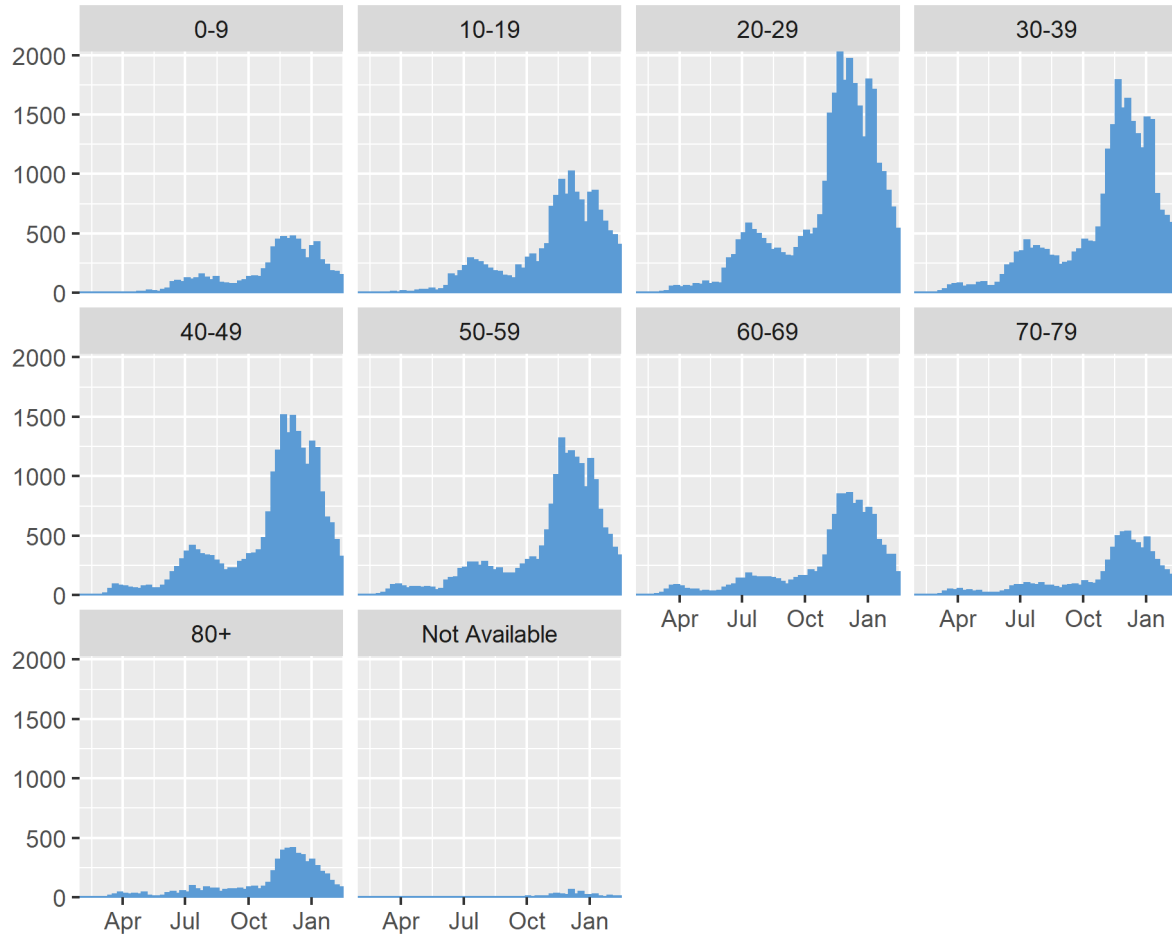


COVID-19 Weekly Report

Oregon's Weekly Surveillance Summary



Figure 14. All COVID-19 cases (counts) by age and week of onset



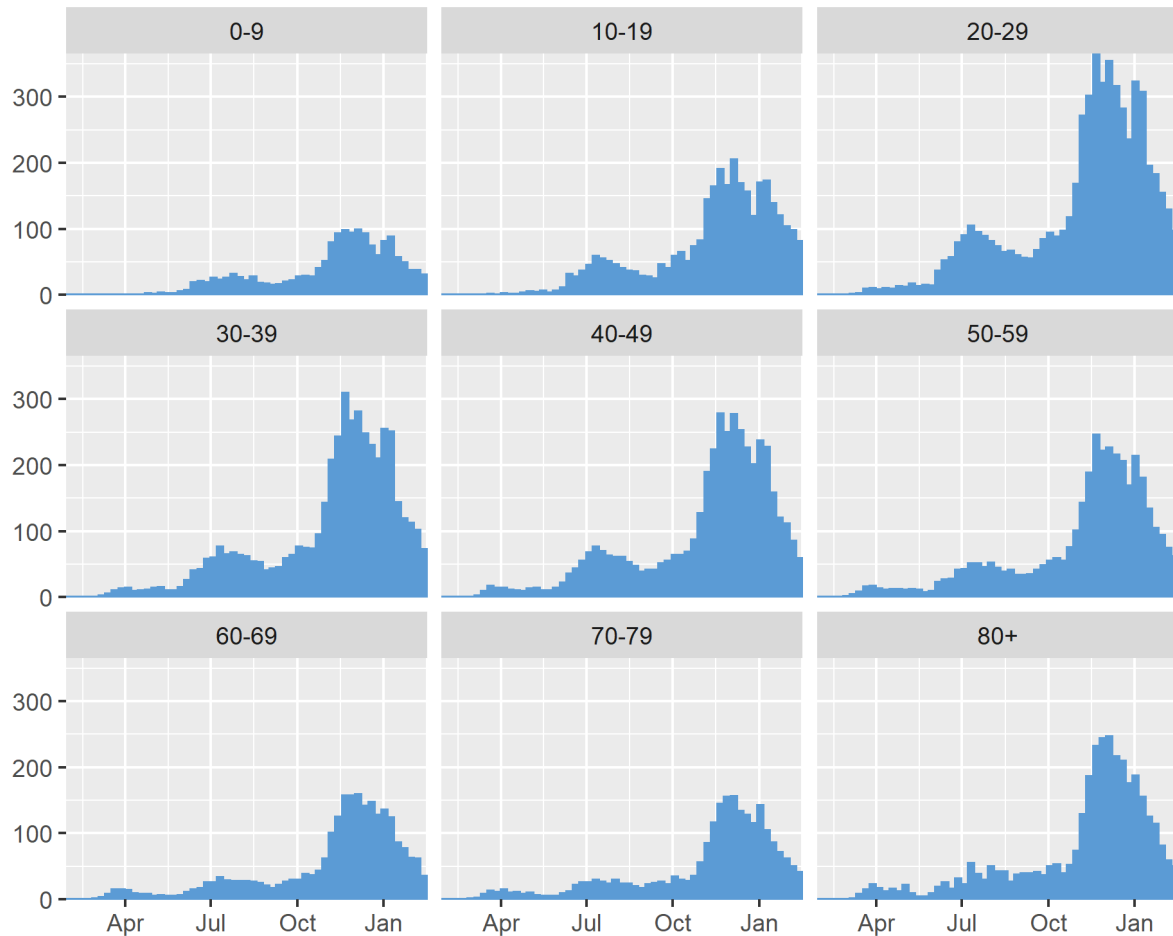
Data are provisional and subject to change.

COVID-19 Weekly Report

Oregon's Weekly Surveillance Summary



Figure 15. All COVID-19 cases (case rate per 100,000) by age and week of onset



COVID-19 Weekly Report

Oregon's Weekly Surveillance Summary



Race

Table 3. Severity and rates of COVID-19 by race

Race	Cases	% of total cases	Cases per 100,000	Hospitalized	% Hospitalized	Deaths	Case fatality
> 1 race	2,448	1.6	1,218	156	6.4	47	1.9
American Indian/Alaska Native	2,704	1.8	5,548	217	8.0	39	1.4
Asian	4,751	3.1	2,623	305	6.4	56	1.2
Black	3,687	2.4	4,567	266	7.2	44	1.2
Not Available	27,914	18.2		732	2.6	339	1.2
Other	36,070	23.6	27,348	1,554	4.3	171	0.5
Pacific Islander	1,360	0.9	8,187	142	10.4	18	1.3
White	74,201	48.5	2,075	5,085	6.9	1,441	1.9
Total	153,135	100.0	3,615	8,457	5.5	2,155	1.4

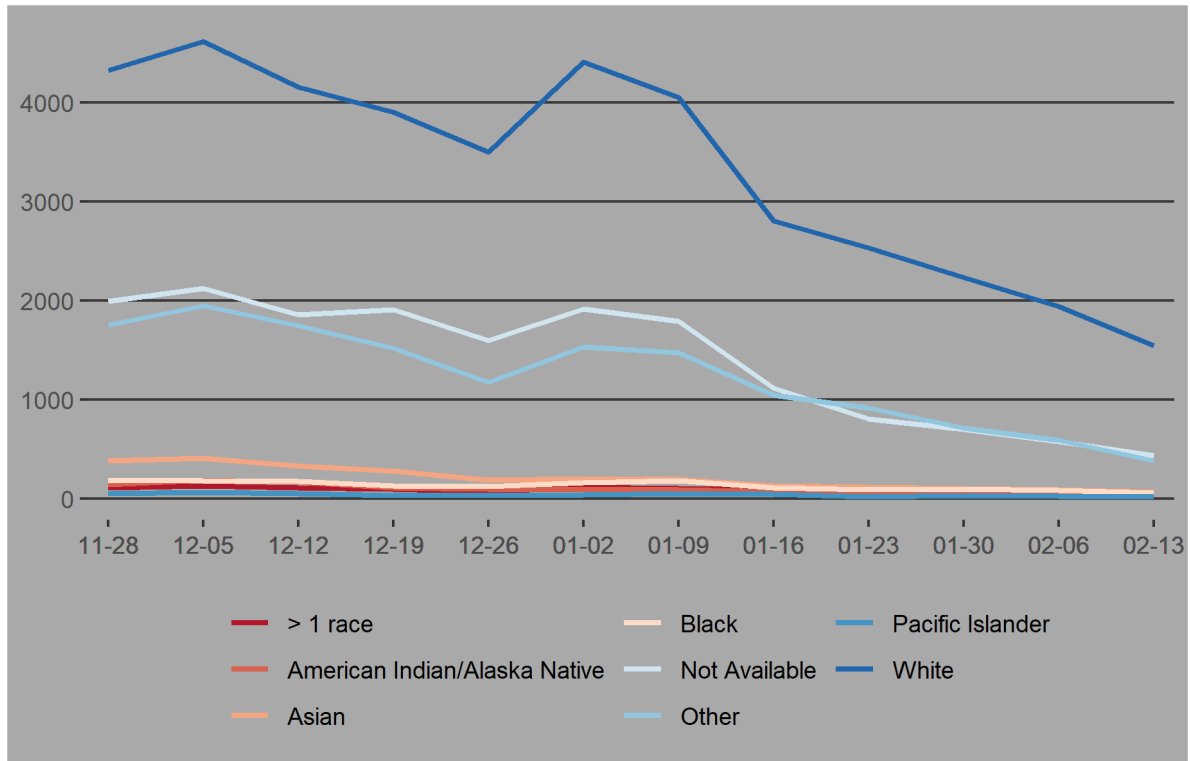
1. During the case investigation, people are asked to self-report their race, ethnicity, tribal affiliation, country of origin, or ancestry.
2. Population data were compiled from the 2019 Annual Oregon Population Report, which is produced by the Population Research Center, Portland State University
3. Persons for which race information was not available were not included in these estimates. The number of persons with race data unavailable can be found in Table 3.
4. 3.283700e+04 (91%) of the 36070 persons who identify as "Other" race also self-identify as Hispanic or Latino.

COVID-19 Weekly Report

Oregon's Weekly Surveillance Summary



Figure 16. Recent COVID-19 cases by race and week of onset



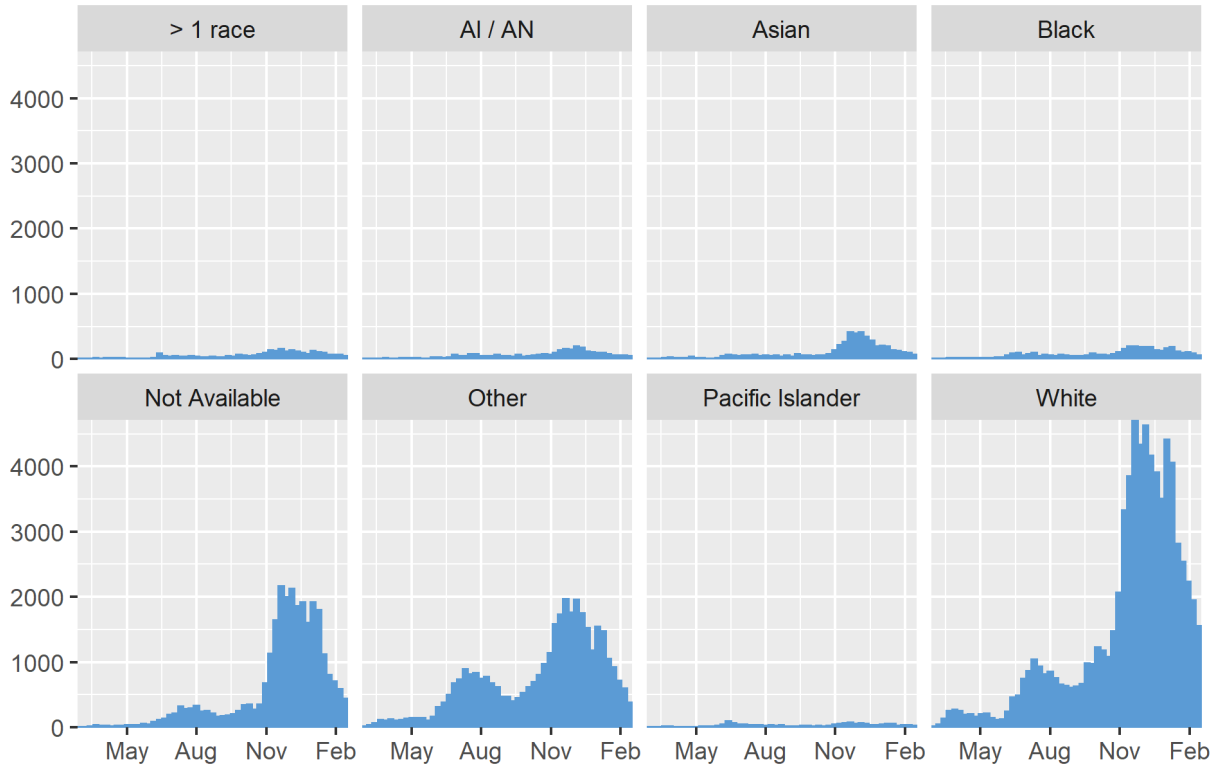
Data are provisional and subject to change.

COVID-19 Weekly Report

Oregon's Weekly Surveillance Summary



Figure 17. All COVID-19 cases (counts) by race and week of onset

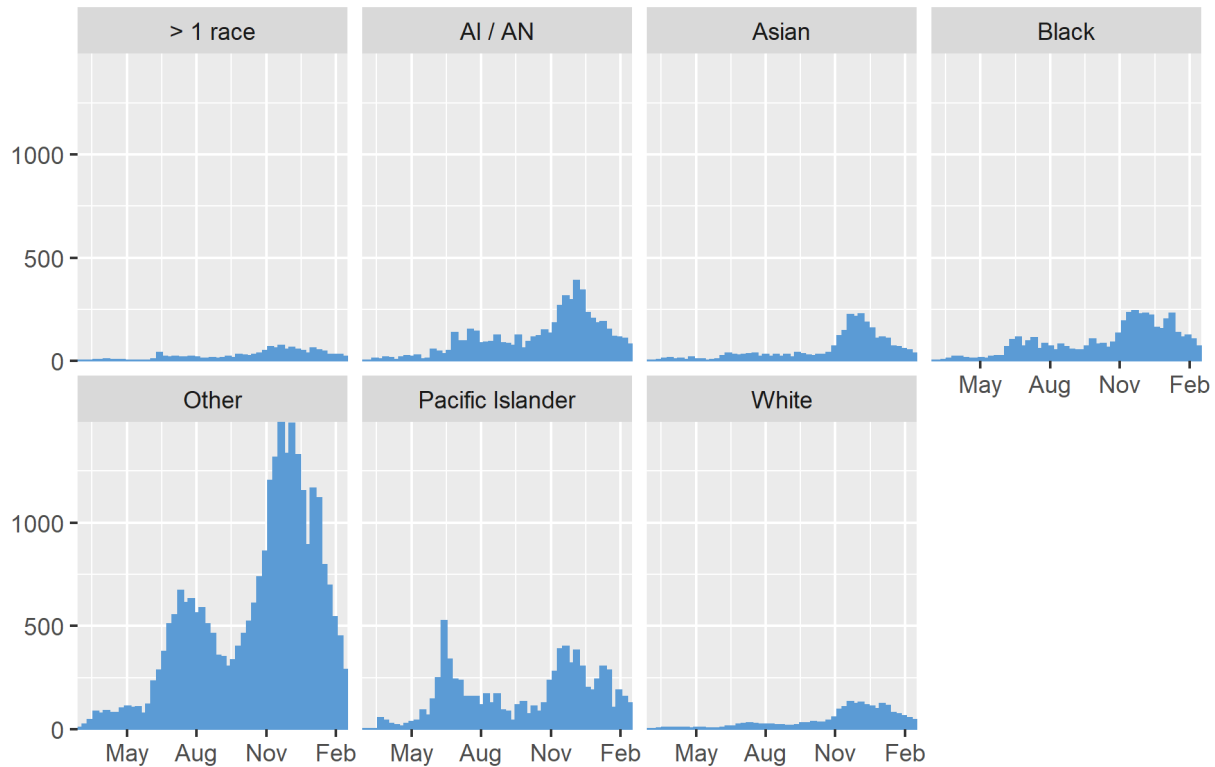


COVID-19 Weekly Report

Oregon's Weekly Surveillance Summary



Figure 18. All COVID-19 cases (case rates per 100,000) by race and week of onset



Ethnicity

Table 4. Severity and rates of COVID-19 by ethnicity

Ethnicity	Cases	% of total cases	Cases per 100,000	Hospitalized	% Hospitalized	Deaths	Case fatality
Hispanic	40,224	26	7,397	1,732	4.3	201	0.5
Not Hispanic	76,162	50	2,062	5,227	6.9	1,385	1.8
Unknown	36,749	24		1,498	4.1	569	1.5
Total	153,135	100	3,615	8,457	5.5	2,155	1.4

Data are provisional and subject to change.

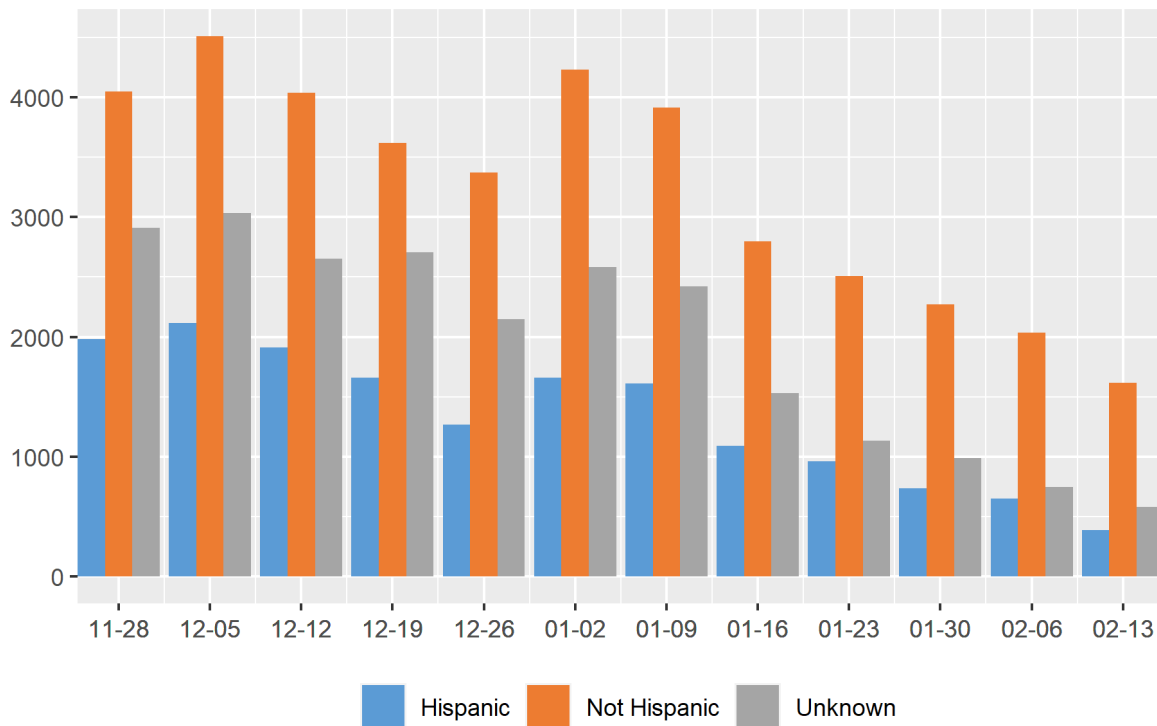
COVID-19 Weekly Report

Oregon's Weekly Surveillance Summary



1. National Center for Health Statistics (NCHS). Estimates of the resident population of the US by year, county, age, bridged race, Hispanic origin, and sex (Vintage 2018). 2) Census Bureau Population Estimates: U.S. Census bureau, Population Division, Annual Estimates of the Resident Population by Age, Sex, Race, and Hispanic Origin for counties (Vintage 2018)

Figure 19. Recent COVID-19 cases by ethnicity and week of onset

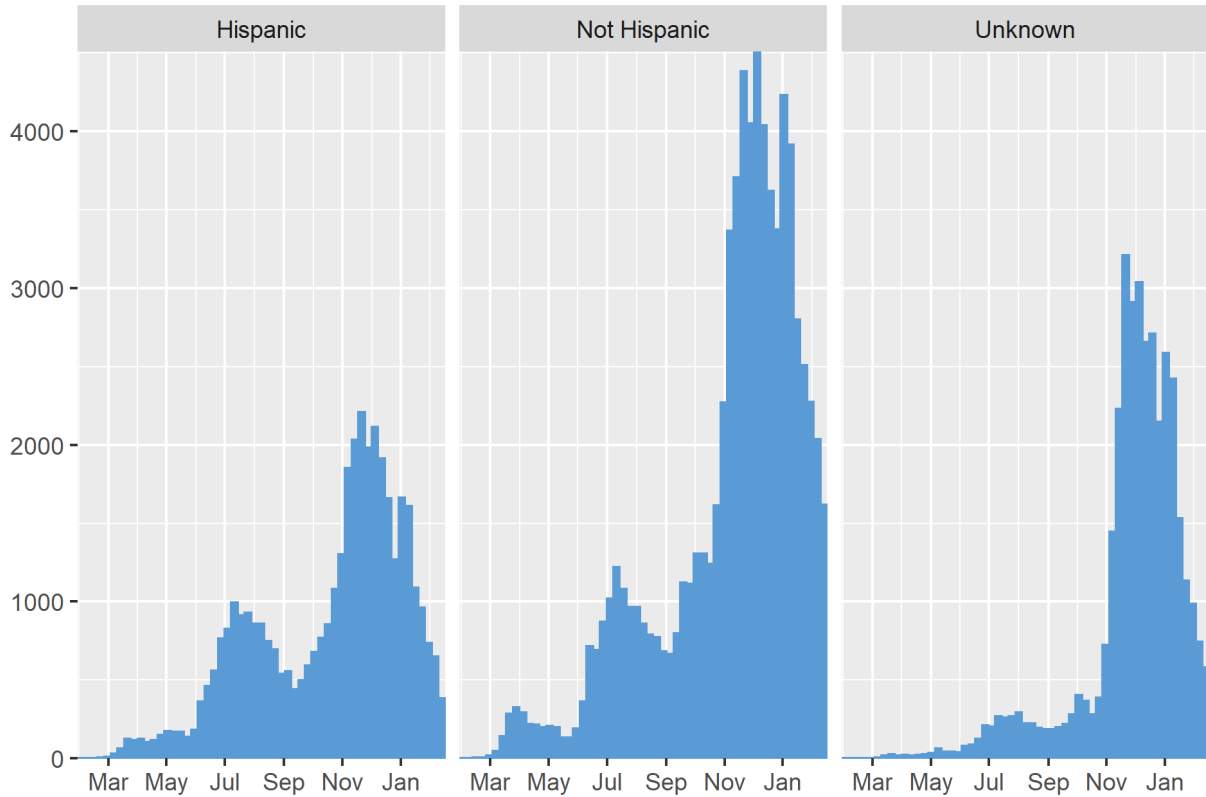


COVID-19 Weekly Report

Oregon's Weekly Surveillance Summary



Figure 20. All COVID-19 cases by ethnicity (counts) and week of onset

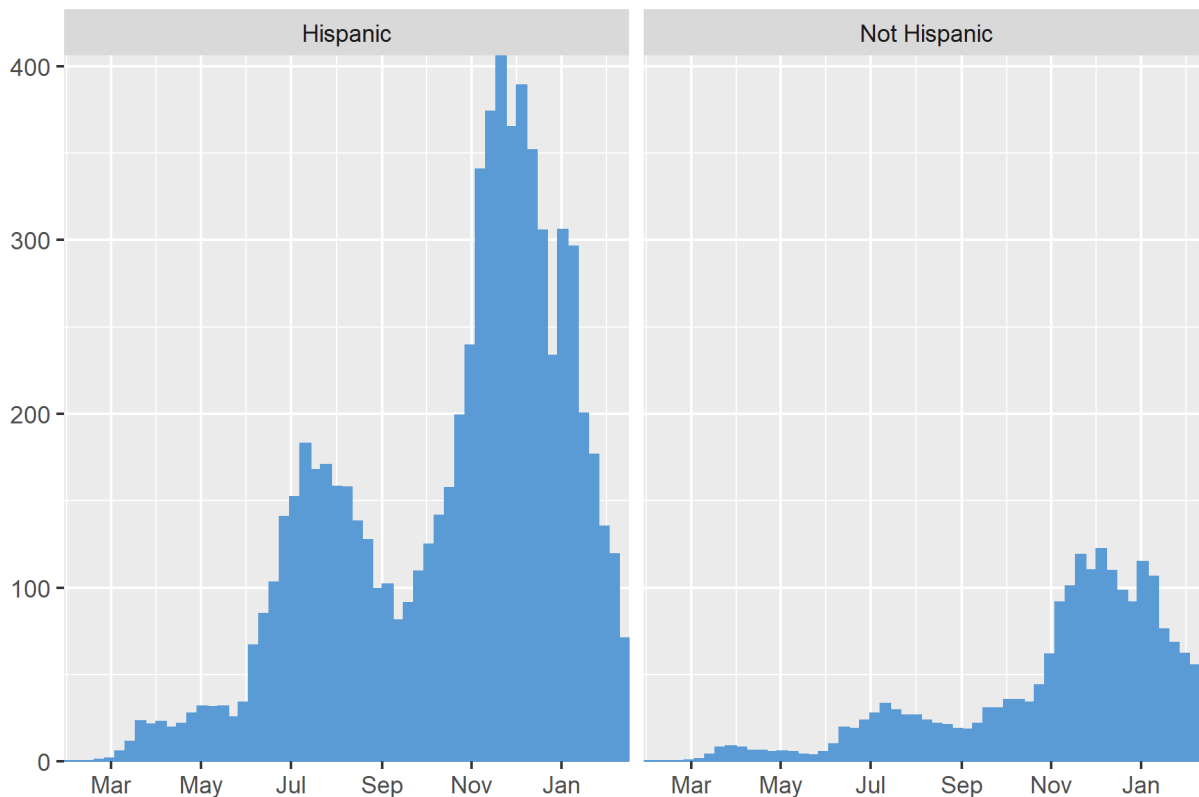


COVID-19 Weekly Report

Oregon's Weekly Surveillance Summary



Figure 21. All COVID-19 cases by ethnicity (case rates per 100,000) and week of onset



Age-adjustment

Tables 5 and 6 show the ratio of age-adjusted rates of COVID-19 for cases, hospitalizations, and deaths by race and ethnicity. Each table compares the rates of cases, hospitalizations, and deaths between each group and a reference group and accounts for differences in population distributions in each group.

Table 5. Ratio of age-adjusted rates of COVID-19 for cases, hospitalizations, and deaths by race

Age-adjusted rate ratios of cases, hospitalizations, and deaths, compared to white persons

COVID-19 Weekly Report

Oregon's Weekly Surveillance Summary



Race	Cases	Hospitalizations	Deaths
> 1 race	0.7	1.4	2.3
American Indian/Alaska Native	2.7	4.0	3.2
Asian	1.2	1.6	1.3
Black	2.1	3.4	2.8
Pacific Islander	4.4	14.1	16.0
White	1.0	1.0	1.0

1. During the case investigation, people are asked to self-report their race, ethnicity, tribal affiliation, country of origin, or ancestry.
2. Population data were compiled from the 2019 Annual Oregon Population Report, which is produced by the Population Research Center, Portland State University
3. Persons for which race information was not available were not included in these estimates. The number of persons with race data unavailable can be found in Table 3.
4. 3.283710⁴ (91%) of the 36070 persons who identify as “Other” race also self-identify as Hispanic or Latino.

Table 6. Ratio of age-adjusted rates of COVID-19 for cases, hospitalizations, and deaths by ethnicity

Age-adjusted rate ratios of cases, hospitalizations, and deaths, compared to non-Hispanic

Ethnicity	Cases	Hospitalizations	Deaths
Hispanic	3.4	4.3	3.3
Non-Hispanic	1.0	1.0	1.0

1. During the case investigation, people are asked to self-report their race, ethnicity, tribal affiliation, country of origin, or ancestry.
2. Population data were compiled from the 2019 Annual Oregon Population Report, which is produced by the Population Research Center, Portland State University
3. Persons for which ethnicity information was not available were not included in these estimates. The number of persons with ethnicity data unavailable can be found in Table 4.

Data are provisional and subject to change.

COVID-19 Weekly Report

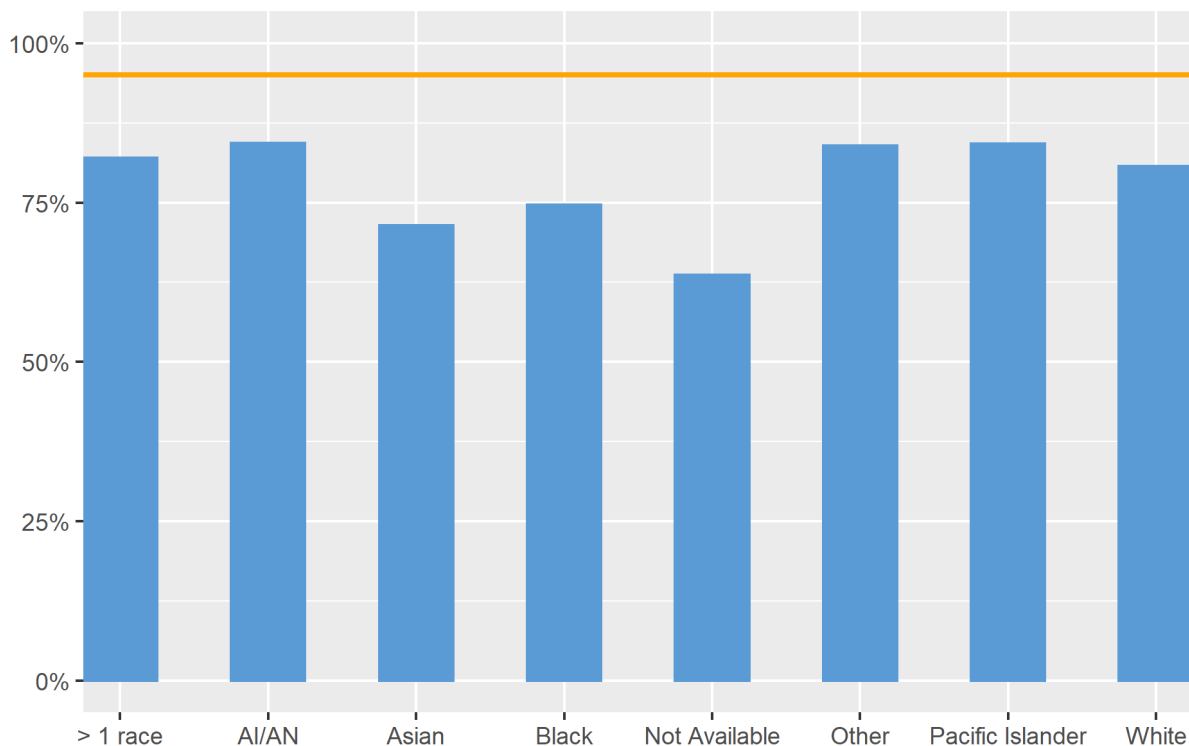
Oregon's Weekly Surveillance Summary



Follow-up

Figure 22 shows the percentage of cases that were called within 24 hours of being reported to public health by race. Figure 23 shows the percentage of cases that were called within 24 hours of being reported to public health by ethnicity. Figure 24 shows the percentage of cases that were interviewed, by race. Figure 25 shows the percentage of cases that were interviewed, by ethnicity. Race and ethnicity data are collected when cases are interviewed. Race and ethnicity data for cases that were not interviewed are abstracted from laboratory reports and medical records if it is available. The orange line in figures 22 and 23 represents the state metric for timely follow up for all cases: 95%.

Figure 22. Follow up attempted within 24 hours, % by race

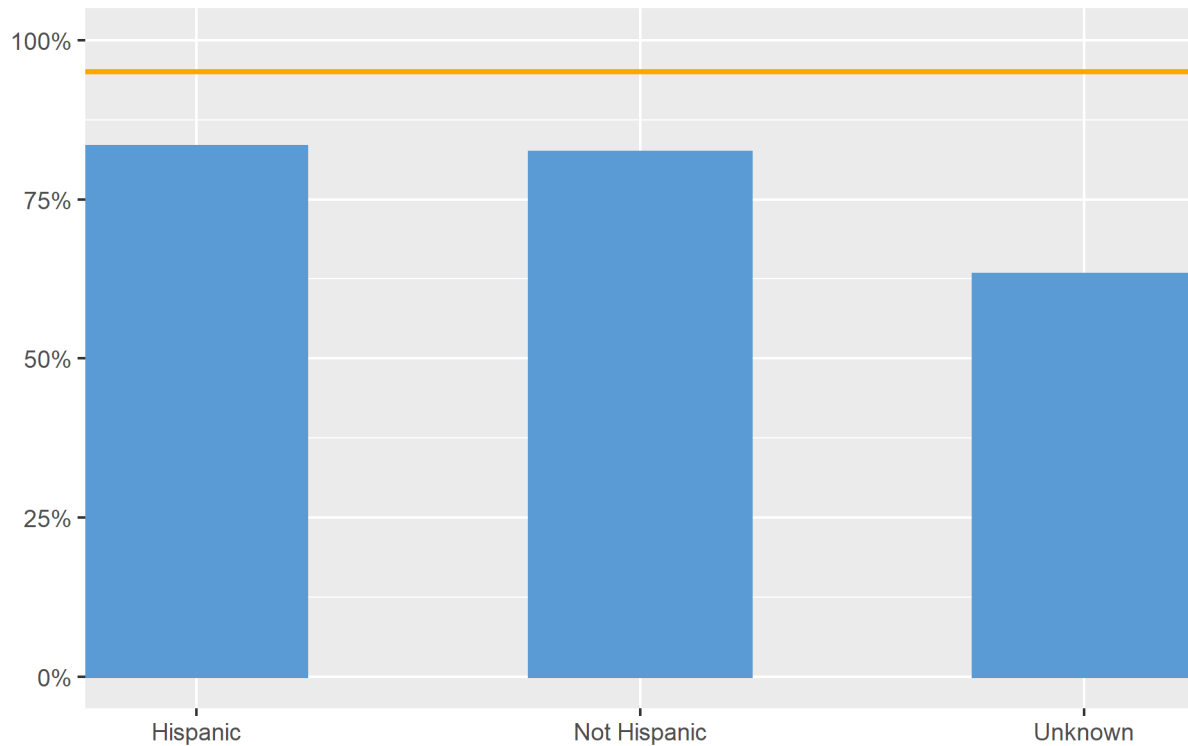


COVID-19 Weekly Report

Oregon's Weekly Surveillance Summary



Figure 23. Follow up attempted within 24 hours, % by ethnicity

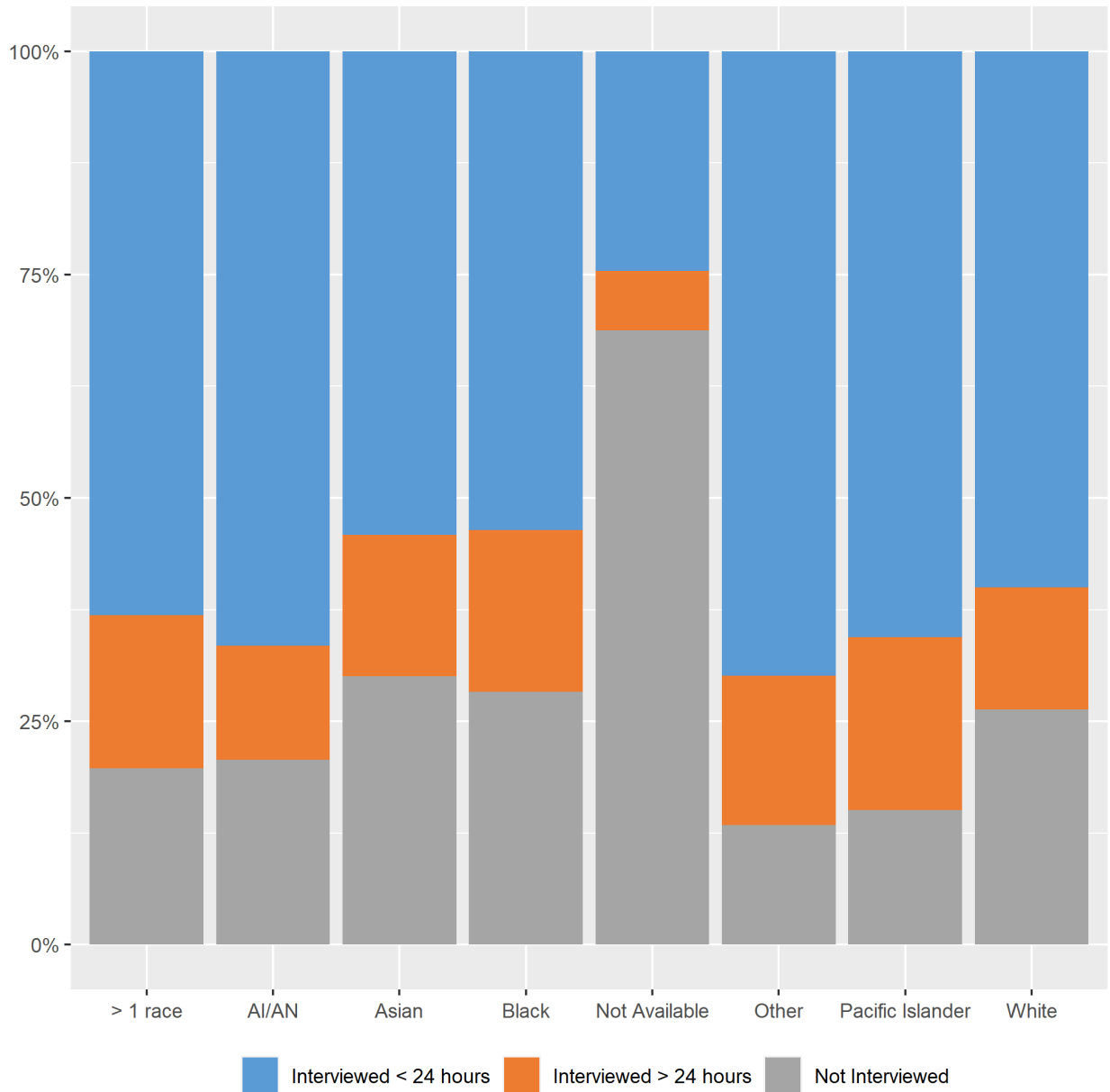


COVID-19 Weekly Report

Oregon's Weekly Surveillance Summary



Figure 24. Cases interviewed, by race



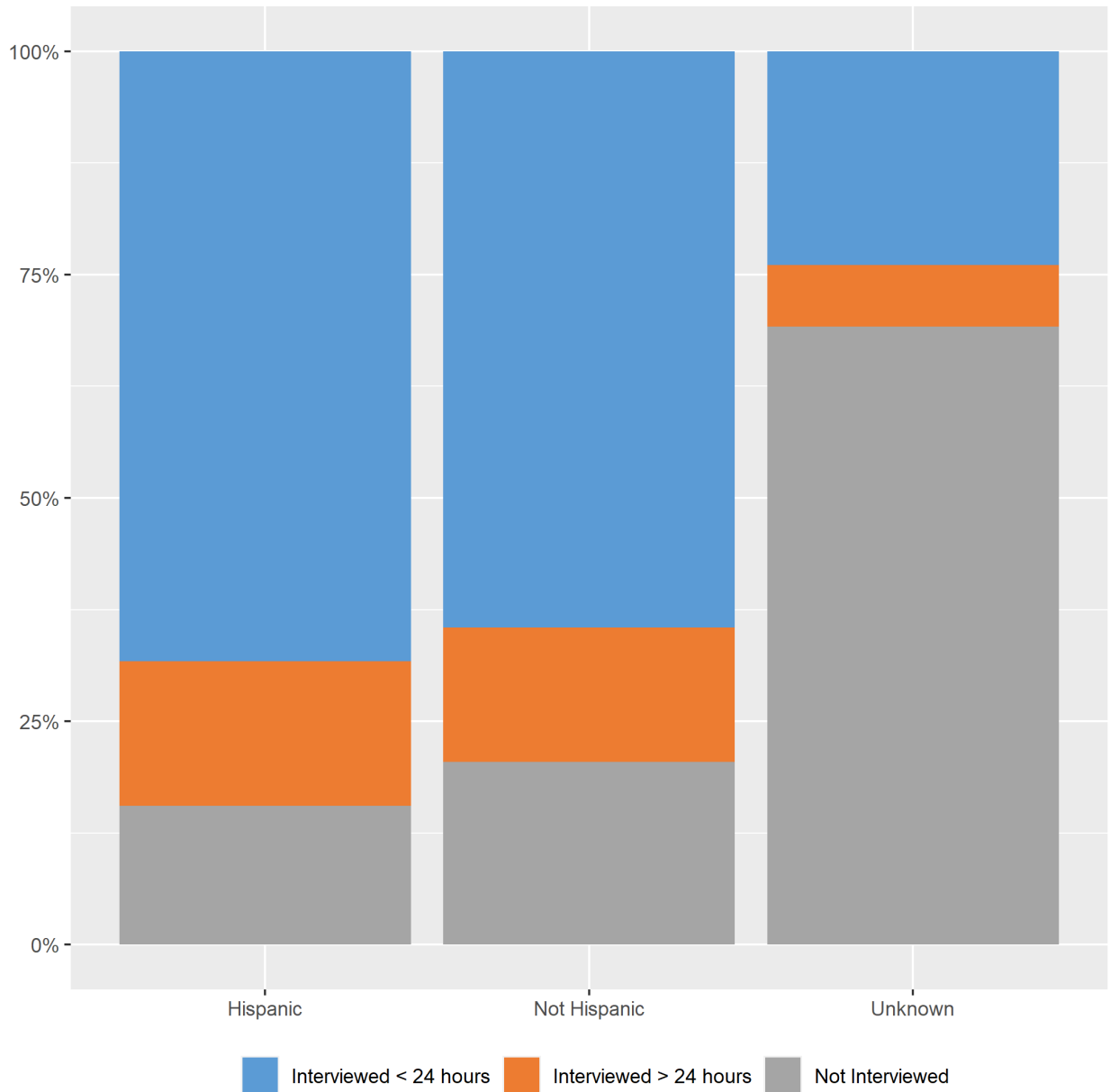
Data are provisional and subject to change.

COVID-19 Weekly Report

Oregon's Weekly Surveillance Summary



Figure 25. Cases interviewed, by ethnicity



Data are provisional and subject to change.

COVID-19 Weekly Report

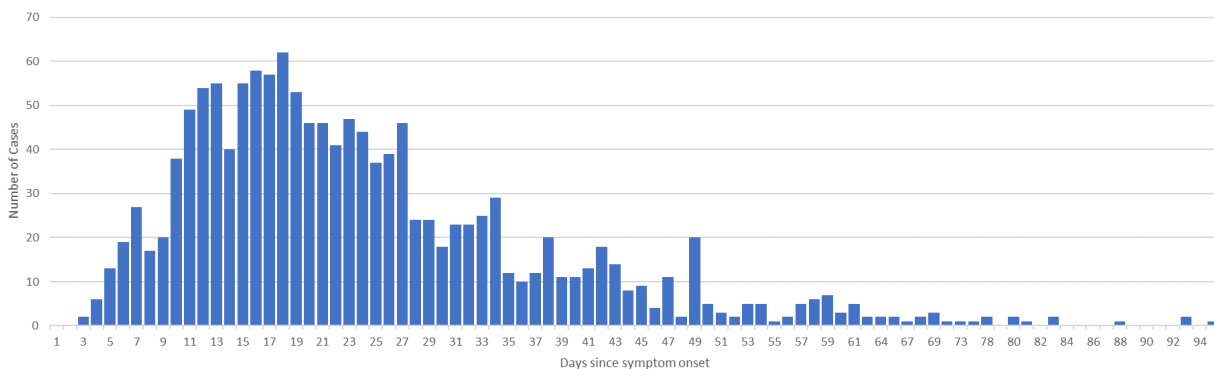
Oregon's Weekly Surveillance Summary



Recovery

OHA staff periodically call people with reported COVID-19 who experienced fever, cough, shortness of breath or diarrhea and were initially interviewed before May 1, when OHA changed its definition of recovery, to inquire about resolution of symptoms. This group includes 1,884 people who were all diagnosed before mid-April and have not succumbed to their illness. Among these, 1,682 (88.8%) are considered to have recovered, and a recovery date is available for 1,387 people; their time to recovery is depicted in Figure 26. Of these 1,884 people, 16 (0.8%), have not yet recovered; and recovery status is not available for 186 (9.8%). People are assumed to have recovered three days after resolution of all symptoms. The median time to recovery among non-hospitalized symptomatic cases is 20 days (interquartile range: 15–29 days); among symptomatic cases who were hospitalized it is 26 days (interquartile range: 18–37 days).

Figure 26. Time to recovery among symptomatic people with COVID-19



Notes about recovery data:

- Recovery definition: three days after reported resolution of diarrhea, cough, shortness of breath and fever.
- Inclusion criteria: cases who were interviewed about their date of recovery before a change in recovery definition on May 1
- Data for 1,387 cases are included
- This was last updated on 9/16; Data will be updated again as new information is available.

COVID-19 Weekly Report

Oregon's Weekly Surveillance Summary



People with Intellectual and Developmental Disabilities

As of January 4, OHA is aware of 637 people with intellectual or developmental disabilities who have had COVID-19 to date. This includes individuals who live in congregate settings and in family or individual homes. To date, there are 19 deaths associated with people with intellectual or developmental disabilities. This number is from conducting a match between the ODHS Office of Developmental Disabilities Services client list and the Oregon COVID-19 case database. OHA will update this number on a quarterly basis.

Additional information about the ODDS program and COVID-19 can be found here:

<https://www.oregon.gov/dhs/SENIORS-DISABILITIES/DD/ODDS%20Resource%20Library/ODDS-Residential-COVID-19-Report.pdf>

ODDS data is based on self-reports from providers and case management entities and therefore may differ from testing data received from the Oregon Health Authority.

Weekly COVID-19 Hospitalizations (HOSCAP)

OHA is publishing data on the number of COVID-19 hospitalizations by hospital in the prior week; data are from HOSCAP. Table 7 lists all hospitals which, at some time during the week reported, had 10 or more suspected/confirmed COVID-19 patients. The left column shows the highest number of suspected and confirmed COVID-19 hospitalized patients for each hospital between 2/15/2021 and 2/21/2021. The right column shows the highest number of confirmed COVID-19 patients hospitalized during the same time period.

Table 7. Hospitals reporting 10 or more COVID-19 patients.

Hospital	Maximum Patients (both suspected and confirmed)	Maximum Patients (confirmed only)
Providence Portland Medical Center	1,412	22
Salem Health Hospital	27	20
St. Charles Bend	18	16
OHSU Hospital	18	<10
PeaceHealth Sacred Heart MC at Riverbend	17	17

Data are provisional and subject to change.

COVID-19 Weekly Report

Oregon's Weekly Surveillance Summary



Hospital	Maximum Patients (both suspected and confirmed)	Maximum Patients (confirmed only)
Providence St. Vincent Medical Center	16	15
Kaiser Permanente Westside Medical Center	13	13
Hillsboro Medical Center	11	<10
McKenzie-Willamette Medical Center	11	<10
Adventist Health Portland	10	10
Asante Rogue Regional Medical Center	10	10
Mercy Medical Center	10	10

The hospitals listed in Table 8 reported 1–9 suspected or confirmed COVID-19 patients 2/15/2021 through 2/21/2021. Hospitals not listed in either table did not report any suspected or confirmed patients during the week.

Table 8. Hospitals reporting 1–9 COVID-19 patients.

Hospital
Adventist Health Tillamook
Asante Ashland Community Hospital
Asante Three Rivers Medical Center
Bay Area Hospital
Coquille Valley Hospital
Good Samaritan Regional Medical Center
Good Shepherd Health Care System
Harney District Hospital
Kaiser Permanente Sunnyside Medical Center
Lake District Hospital
Legacy Emanuel Medical Center

Data are provisional and subject to change.

COVID-19 Weekly Report

Oregon's Weekly Surveillance Summary



Hospital
Legacy Good Samaritan Medical Center
Legacy Meridian Park Hospital
Legacy Mount Hood Medical Center
Legacy Silverton Medical Center
Mid-Columbia Medical Center
OHSU Doernbecher Children's Hospital
Providence Hood River Memorial Hospital
Providence Medford Medical Center
Providence Milwaukie Hospital
Providence Newberg Medical Center
Providence Seaside Hospital
Providence Willamette Falls Medical Center
Randall Children's Hospital at Legacy Emanuel
Samaritan Albany General Hospital
Samaritan Lebanon Community Hospital
Samaritan Pacific Communities Hospital
Santiam Hospital
Sky Lakes Medical Center
St. Anthony Hospital
VA Portland Health Care System
Wallowa Memorial Hospital
Willamette Valley Medical Center

COVID-19 Weekly Report

Oregon's Weekly Surveillance Summary



ZIP code

OHA is publishing data on cases at the ZIP code level, available online at:

<https://public.tableau.com/profile/oregon.health.authority.covid.19#!/vizhome/OregonCOVID-19CasesbyZIPCode/OregonsCOVID-19CasesbyZipCode?publish=yes>

Summary table of all zip codes available here:

<https://public.tableau.com/profile/oregon.health.authority.covid.19#!/vizhome/OregonCOVID-19CasesbyZIPCode-SummaryTable/CasesbyZIPCodeSummaryTable?publish=yes>

Document accessibility: For individuals with disabilities or individuals who speak a language other than English, OHA can provide information in alternate formats such as translations, large print, or braille. Contact the Health Information Center at 1-971-673-2411, 711 TTY or COVID19.LanguageAccess@dhsosha.state.or.us.