

DB

MB

2 x 10.50 ±0.10

(32.45)

(14.30)

(17.30)

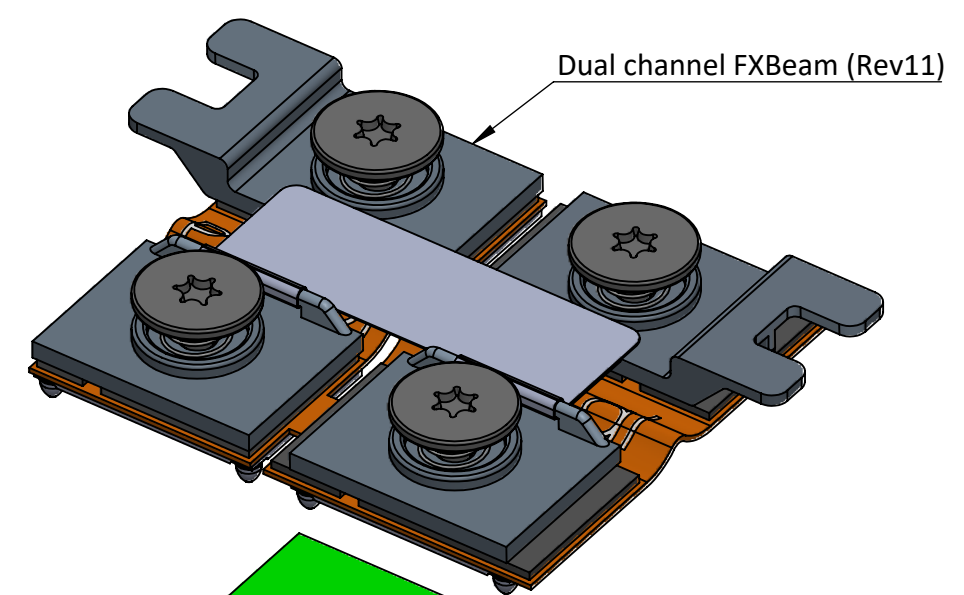
(16.55) 27.25 ±0.15

(16.65)

MB

(4.45)

(PCB 1.20)



PCB (DB)

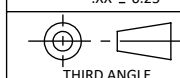
PCB (MB)

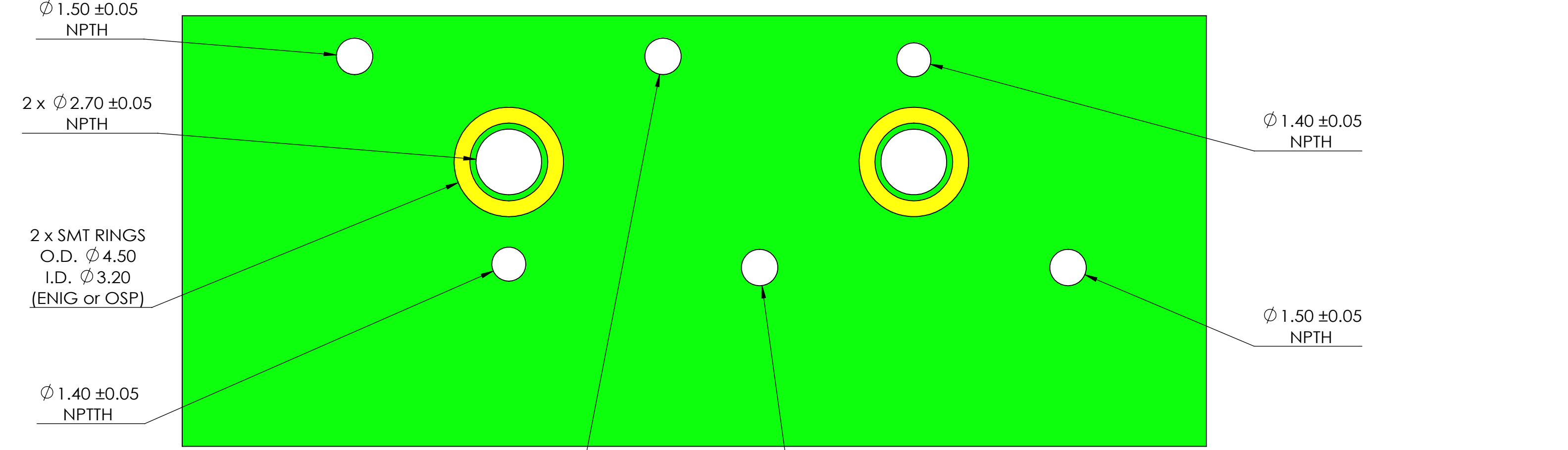
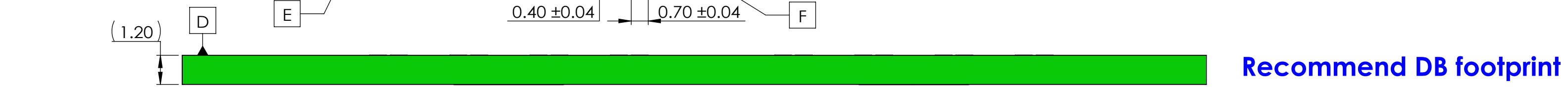
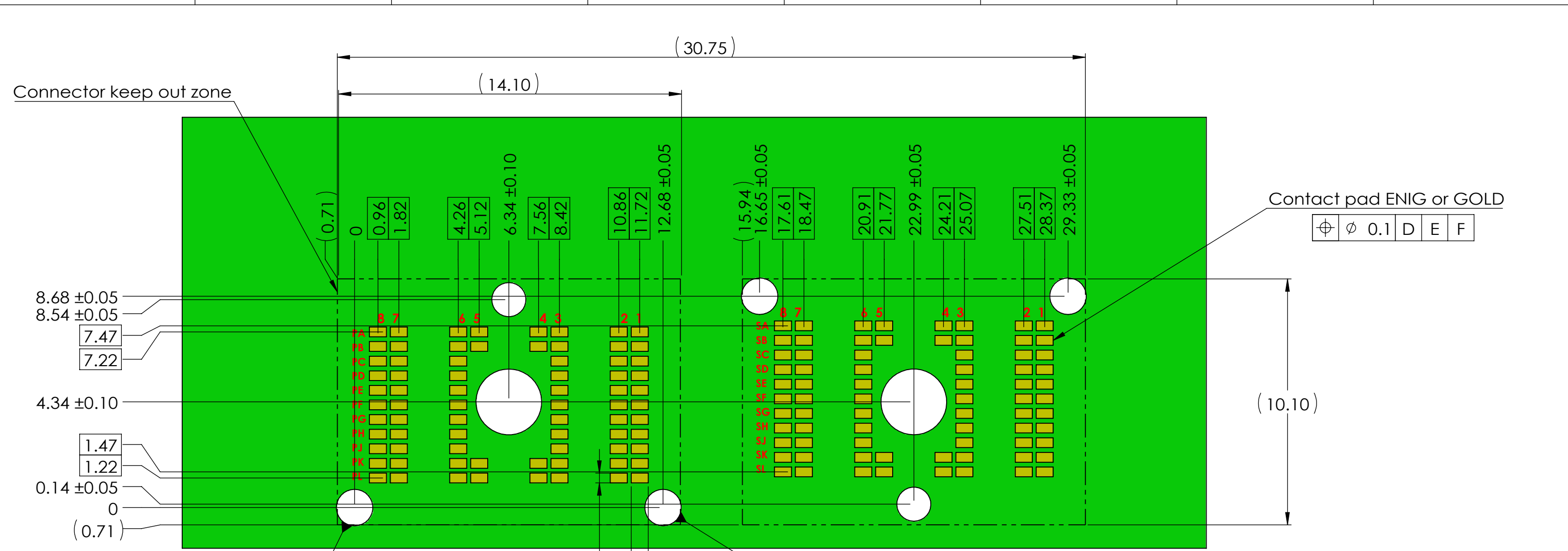
4 x M2.0 nut

Additional information on this product is available by contacting Unimicron or Neoconix as follows:
 Asia: James_Chang@unimicron.com
 Rest of World: sales@neoconix.com



DIMENSIONS ARE IN MM [INCH]		MATERIAL:		TITLE:	
.X ± 0.13	[.005]	FINISH: --	Dual-channel 74P FXBeam, length 27.75mm		
.XX ± 0.08	[.003]	DRAWN BY: Winni Cheng	2023/03/27	SIZE	DWG. NO.:
.XXX ± 0.04	[.001]	CHECKED BY: Justin Wu	2023/03/27	B+	FXBM-X148F027A
ANGLE: NO DEC ± 1°	.X ± 0.5°	ENGR APPR: Gary Hsieh	2023/03/27	SCALE: 3.5:1	SHEET 1 OF 5
.XX ± 0.25°		MFG APPR:			
		QA APPR:			

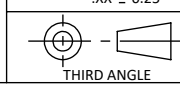


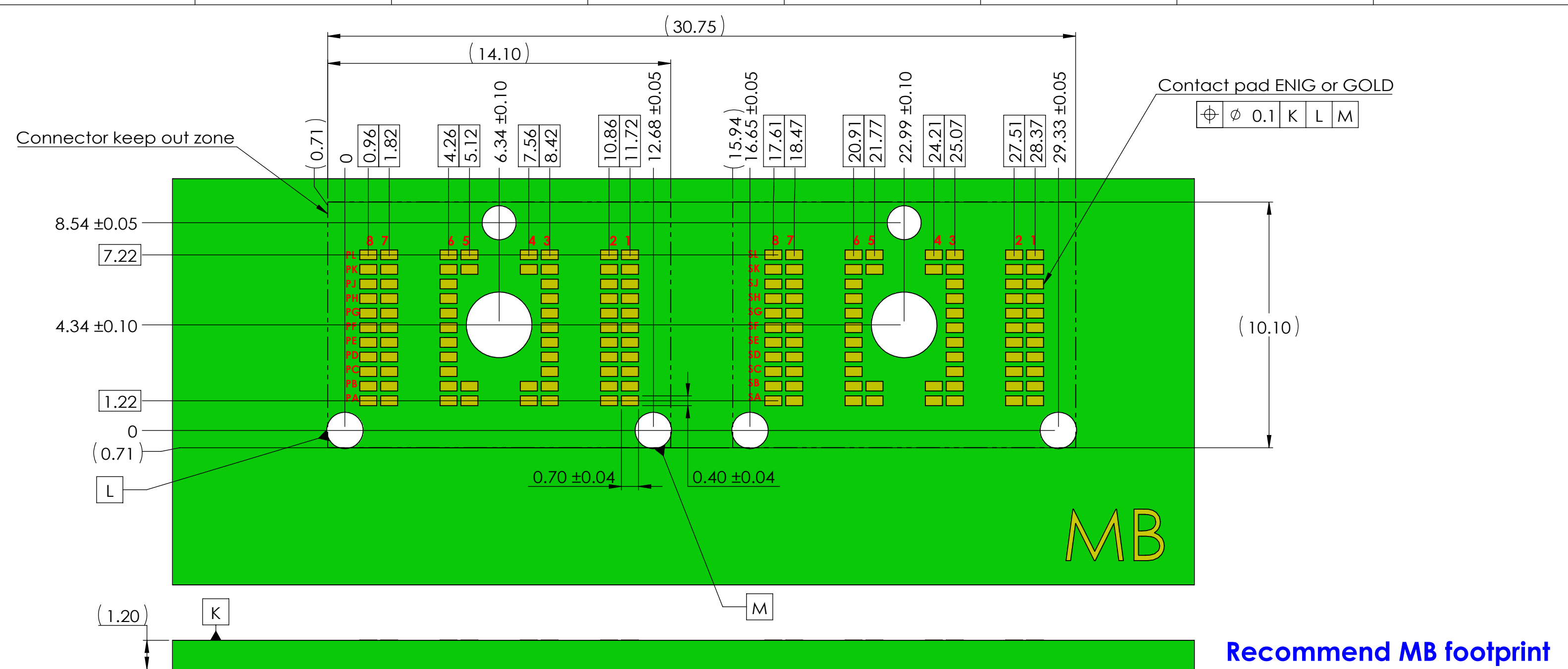


NOTES :
1. SOLDERMASK OPENING OF PAD MIN 0.5X0.8mm

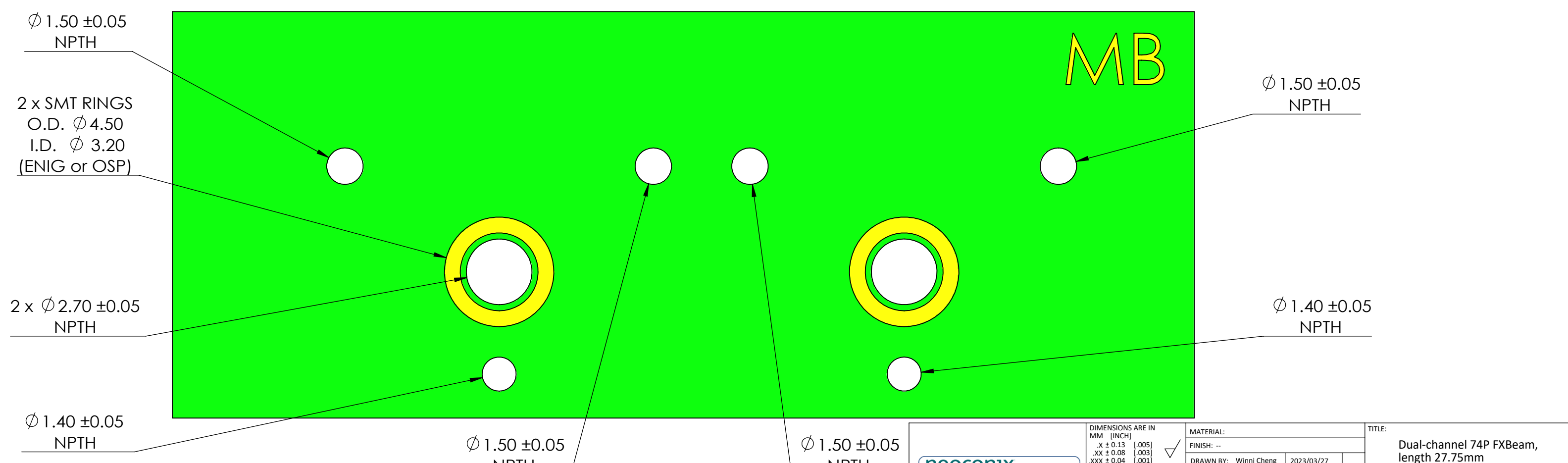


DIMENSIONS ARE IN MM [INCH] .X ± 0.13 [.005] .XX ± 0.08 [.003] .XXX ± 0.04 [.001] ANGLE: NO DEC ± 1° .X ± 0.5° .XX ± 0.25°		MATERIAL: FINISH: --		TITLE: Dual-channel 74P FXBeam, length 27.75mm	
DRAWN BY: Winni Cheng 2023/03/27		CHECKED BY: Justin Wu 2023/03/27		SIZE B+	
ENGR APPR: Gary Hsieh 2023/03/27		MFG APPR:		DWG. NO.: FXBM-X148F027A	
QA APPR:				SCALE: 6.5:1 SHEET 2 OF 5	





Recommend MB footprint



NOTES :
1. SOLDERMASK OPENING OF PAD MIN 0.5X0.8mm



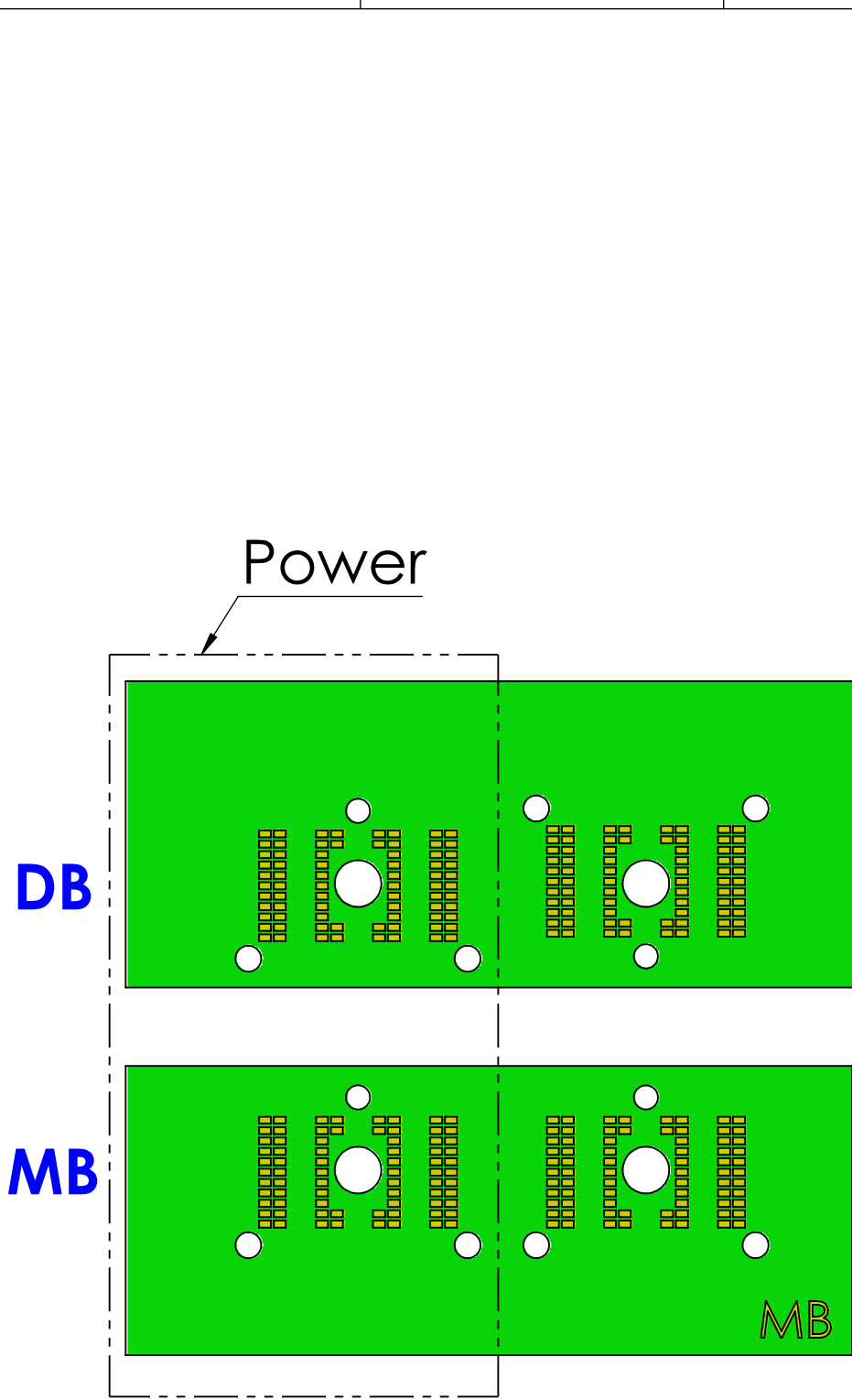
DIMENSIONS ARE IN MM [INCH]

.X ± 0.13	[.005]
.XX ± 0.08	[.003]
.XXX ± 0.04	[.001]
ANGLE: NO DEC ± 1°	
.X ± 0.5*	
.XX ± 0.25*	

THIRD ANGLE

MATERIAL:	
FINISH: --	
DRAWN BY: Winni Cheng	2023/03/27
CHECKED BY: Justin Wu	2023/03/27
ENGR APPR: Gary Hsieh	2023/03/27
MFG APPR:	
QA APPR:	

TITLE:		Dual-channel 74P FXBeam, length 27.75mm	
SIZE	DWG. NO.:	REV	
B+	FXBM-X148F027A		
SCALE:	6.5:1	SHEET	3 OF 5



8	7	6	5	4	3	2	1	
VSYS_GPU	VSYS_GPU	GND	3.3V_ALW	3.3V_ALW	GND	VADP_GPU	VADP_GPU	
VSYS_GPU	VSYS_GPU	GND	3.3V_ALW	3.3V_ALW	GND	VADP_GPU	VADP_GPU	
VSYS_GPU	VSYS_GPU	GND	DB		I2C_CLK_ALW	VADP_GPU	VADP_GPU	
VSYS_GPU	VSYS_GPU	GND			I2C_DAT_ALW	GND	GND	
VSYS_GPU	VSYS_GPU	GND			GND	GND	GND	
VSYS_GPU	VSYS_GPU	GND			EXT_SSD1_RST#	I2C_INT_ALW	GND	
VSYS_GPU	VSYS_GPU	GND	VSYS_GPU	VSYS_GPU	GND	EXT_SSD2_RST#	EXT_SSD2_CLK_REQ#	GPIO0_EC
GND	GND	GND	GND	GND	GND	Fan0_SPEED	GPIO1_EC	
GND	GND	GND	GND	GND	USB+	Fan1_SPEED	ID0	
5V_ALW	5V_ALW	GND	Fan1_PWM	GND	USB-	PWR_EN	DDS_SDA	
5V_ALW	5V_ALW	GND	Fan0_PWM	12V_FAN	GND	DDS_CLK	PWR_GOOD	


PA
PB
PC
PD
PE
PF
PG
PH
PJ
PK
PL

8	7	6	5	4	3	2	1	
5V_ALW	5V_ALW	GND	Fan0_PWM	12V_FAN	GND	DDS_CLK	PWR_GOOD	
5V_ALW	5V_ALW	GND	Fan1_PWM	GND	USB-	PWR_EN	DDS_SDA	
GND	GND	GND	MB		USB+	Fan1_SPEED	ID0	
GND	GND	GND			GND	Fan0_SPEED	GPIO1_EC	
VSYS_GPU	VSYS_GPU	GND			EXT_SSD2_RST#	EXT_SSD2_CLK_REQ#	GPIO0_EC	
VSYS_GPU	VSYS_GPU	GND			EXT_SSD1_RST#	I2C_INT_ALW	GND	
VSYS_GPU	VSYS_GPU	GND	VSYS_GPU	VSYS_GPU	GND	GND	GND	
VSYS_GPU	VSYS_GPU	GND	VSYS_GPU	VSYS_GPU	GND	GND	GND	
VSYS_GPU	VSYS_GPU	GND	VSYS_GPU	VSYS_GPU	GND	I2C_DAT_ALW	GND	
VSYS_GPU	VSYS_GPU	GND	VSYS_GPU	VSYS_GPU	GND	I2C_CLK_ALW	VADP_GPU	VADP_GPU
VSYS_GPU	VSYS_GPU	GND	3.3V_ALW	3.3V_ALW	GND	VADP_GPU	VADP_GPU	
VSYS_GPU	VSYS_GPU	GND	3.3V_ALW	3.3V_ALW	GND	VADP_GPU	VADP_GPU	

PL
PK
PJ
PH
PG
PF
PE
PD
PC
PB
PA

VSYS_GPU
GND for VSYS_GPU
5V_ALW
GND for 5V_ALW
VADP_GPU
GND for VADPGPU
3.3V_ALW
GND for 3.3V_ALW
12V_FAN
GND for 12V_FAN
Diff/I2C
GND for Diff
Single end

Power PCB PIN MAP



DIMENSIONS ARE IN MM [INCH]		MATERIAL:		TITLE:	
.X ± 0.13 [.005]	.XX ± 0.08 [.003]	FINISH: --		Dual-channel 74P FXBeam, length 27.75mm	
.XXX ± 0.04 [.001]	ANGLE: NO DEC ± 1°	DRAWN BY: Winni Cheng	2023/03/27	SIZE: B+	DWG. NO.: FXBM-X148F027A
.X ± 0.5°	.XX ± 0.25°	CHECKED BY: Justin Wu	2023/03/27		
THIRD ANGLE		ENGR APPR: Gary Hsieh	2023/03/27		
		MFG APPR:		SCALE: 2.5:1 SHEET 5 OF 5	
		QA APPR:			