

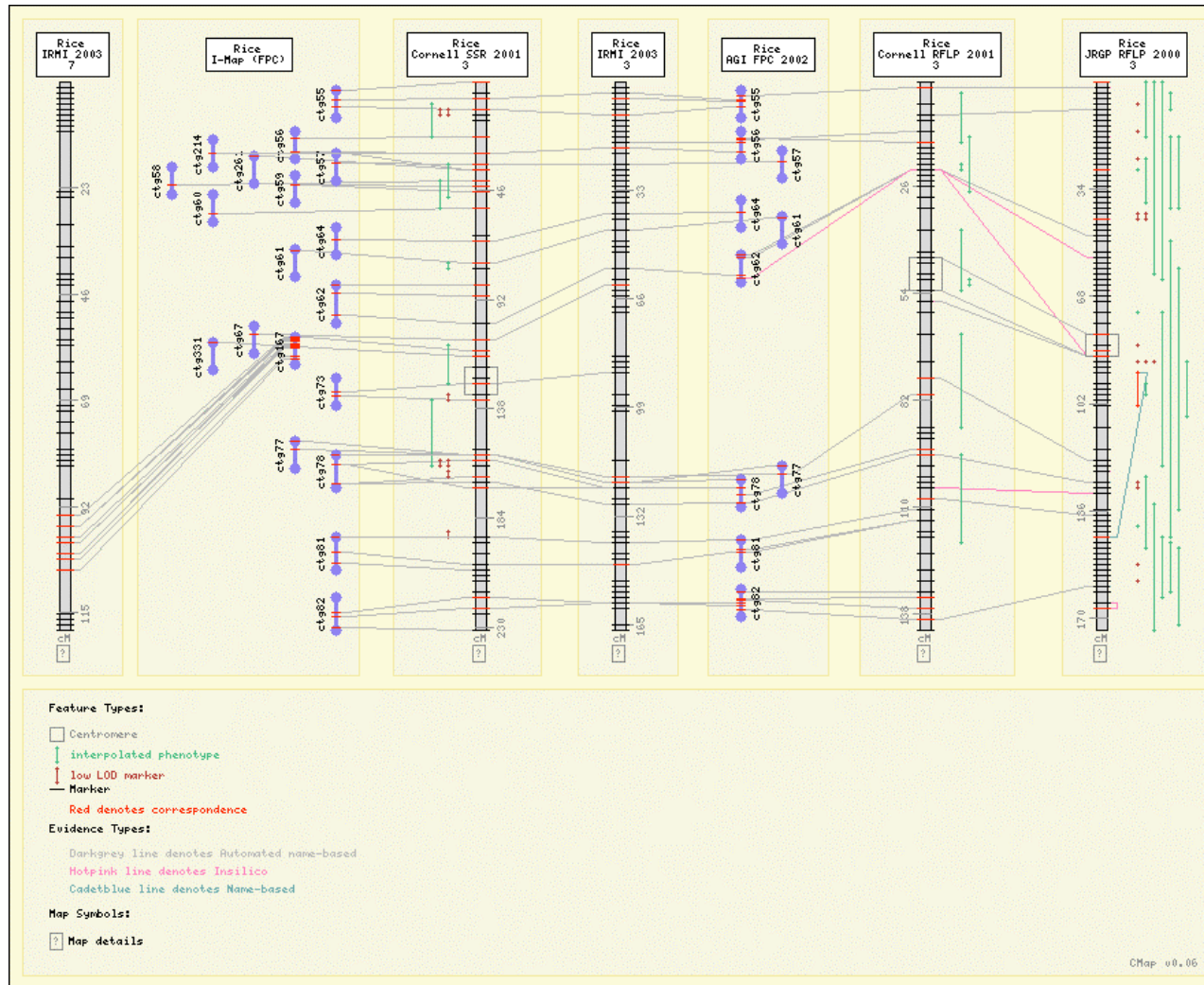


CMap: Visualization of Comparative Maps

Ken Y. Clark

Cold Spring Harbor Labs

What do the pictures look like?



Select a Reference Map

Safari File Edit View History Bookmarks Window Help [Desktop 2] (100%) Mon 9:27 AM

Comparative Maps
http://oakhill.homeip.net:8080/cmap/viewer?ref_map_set_aid=jrgp-rflp

Home | Genetic & Comparative Maps | Matrix | Feature Search | Map Set Info | Help Data Source: Gramene Submit

Map Viewer

Ref. Set: Rice - JRGF RFLP 2000 Submit

Ref. Map: --Select a Map-- Submit

The CMap Viewer allows a user to view and compare maps between and among species. See [help](#) for more info.

Quick Start

To view a map and set up a comparison:

1. Select a reference map set.
2. Select one or two comparative maps to add to the left and/or right of the reference map. You may continue to add additional maps as desired.

Please note: Enabling Javascript will cause forms to be submitted automatically after choosing from the drop-down lists. This is intended to be a convenience for the user but is not a requirement for using the maps.

View Map

Grab File Edit Capture Window Help [Desktop 2] [100%] Mon 9:32 AM

Comparative Maps
http://oakhill.homeip.net:8080/cmap/viewer?ref_map_start=0.00&ref_map_stop=173.50&highli... Google

Home | Genetic & Comparative Maps | Matrix | Feature Search | Map Set Info | Help Data Source: Gramene Submit

Map Viewer

Ref. Set: Rice - JRGP RFLP 2000 Submit

Ref. Map: 3 Submit

Start: 0.00

End: 173.50

Highlight: 31329

Comp. Map (Right):
== Physical Maps ==
Rice - I-Map (FPC) (All) [347]
Rice - AGI FPC 2002 (All) [306]
== Genetic Maps ==

Current Maps: Rice-JRGP RFLP 2000-3 (Ref.)

Comp. Map (Left):
== Physical Maps ==
Rice - I-Map (FPC) (All) [347]
Rice - AGI FPC 2002 (All) [306]
== Genetic Maps ==

Image Size: Small Medium Large

Font Size: Small Medium Large

Image Type: PNG JPEG

Show Labels: None Landmarks All

Min. No. Correspondences:

Include Feature Types: --All--
Centromere
interpolated phenotype
low LOD marker

Include Correspondence Types: --All--
Automated name-based
Insilico
Name-based

Reset Show Map

Feature Types:
 Centromere
 interpolated phenotype
 low LOD marker
 Marker
Red denotes correspondence

Evidence Types:
Hotpink line denotes Insilico
Cadetblue line denotes Name-based

Map Symbols:
 Map details

CMap v0.06

Feature Detail

Home | [Genetic & Comparative Maps](#) | [Matrix](#) | [Feature Search](#) | [Map Set Info](#) | [Help](#)

Feature Detail "V143"

Acc ID: 2501
Feature Type: Marker
Feature Name: V143
Alternate Name: RZ576
Map: Rice-JRGP RFLP 2000-3 ([View on Map](#))
Start: 86.00 cM
Stop:

Database Cross-References: [View Marker Details](#)

Correspondences						
Species	Map Set Name	Map Name	Feature Name	Alt. Name	Evidence	Actions
Rice	Cornell RFLP 1994	3	RZ576	RZ576	Automated name-based Name-based	Feature Details View On Map Show Maps
Rice	Cornell RFLP 1994	3	RZ576	RZ576	Automated name-based Name-based	Feature Details View On Map Show Maps
Rice	Cornell RFLP 2001	3	RZ576	RZ576	Automated name-based Name-based	Feature Details View On Map Show Maps
Rice	Cornell RFLP 2001	3	RZ576	RZ576	Automated name-based Name-based	Feature Details View On Map Show Maps
Rice	I-Map (FPC)	ctg72	RZ576		Automated name-based Name-based	Feature Details View On Map Show Maps
Rice	I-Map (FPC)	ctg72	RZ576		Automated name-based Name-based	Feature Details View On Map Show Maps
Rice	JRGP RFLP 2000	3	V143	RZ576	Name-based	Feature Details View On Map Show Maps
Rice	JRGP RFLP 2000	3	V143	RZ576	Name-based	Feature Details View On Map Show Maps

Map Detail

Grab File Edit Capture Window Help [Desktop 2] (100%) Mon 9:36 AM

Reference Map Details

http://oakhill.homeip.net:8080/cmap/map_details?ref_map_set_aid=jrgp-rflp-2000;ref_map_aid=27;compara

Restrict by Map: --All-- [Submit] [Download Feature Data]

406 records found. Showing 1 to 25.
[1](#) | [3](#) | [5](#) | [7](#) | [9](#) | [11](#) | [13](#) | [15](#) | [17](#) | [Next](#)

Rice - JRGF RFLP 2000 - 3 (Click headers to resort)			Comparative Maps					
Feature	Type	Position (cM)	Map	Feature	Type	Position	Evidence	Actions
V80	Marker	0.00	Rice - JRGF RFLP 2000 - 3	V80	Marker	0.00 (cM)	Name-based, Name-based	View Maps
spl3	interpolated phenotype	0.00 - 17.50	No other positions					
d14	interpolated phenotype	0.00 - 60.20	No other positions					
ga3	interpolated phenotype	0.00 - 62.20	No other positions					
S1792	Marker	1.10	Rice - AGI FPC 2002 - ctg55	E50612S	Marker	121.00 - 143.00 (bands)	Insilico	View Maps
			Rice - JRGF RFLP 2000 - 3	E50612S	Marker	1.10 (cM)	Insilico	View Maps
			Rice - I-Map (FPC) - ctg55	E50612S	Marker	121.00 - 143.00 (bands)	Insilico	View Maps
			Rice - I-Map (FPC) - ctg55	S1792	Marker	117.00 - 143.00 (bands)	Automated name-based	View Maps
S10760	Marker	1.10	Rice - AGI FPC 2002 - ctg55	S10760	Marker	107.00 - 117.00 (bands)	Automated name-based	View Maps
			Rice - I-Map (FPC) - ctg55	S10760	Marker	107.00 - 117.00 (bands)	Automated name-based	View Maps
R1468A	Marker	1.10	Rice - I-Map (FPC) - ctg55	R1468	Marker	236.00 - 238.00 (bands)	Automated name-based	View Maps
			Rice - Huazhong RFLP 1997 - 3	R1468	Marker	3.70 (cM)	Automated name-based	View Maps
			Rice - AGI FPC 2002 - ctg55	R1468	Marker	236.00 - 238.00 (bands)	Automated name-based	View Maps
M83	Marker	1.10	Maize - IBM neighbors - 9	csu54b	Marker	547.00 (cM)	Automated name-based	View Maps
V10B	Marker	1.10	No other positions					
E50612S	Marker	1.10	Rice - AGI FPC 2002 - ctg55	E50612S	Marker	121.00 - 143.00 (bands)	Automated name-based	View Maps
			Rice - I-Map (FPC) - ctg55	E50612S	Marker	121.00 - 143.00 (bands)	Automated name-based	View Maps
			Rice - I-Map (FPC) - ctg55	S1792	Marker	117.00 - 143.00 (bands)	Insilico	View Maps
			Rice - AGI FPC 2002 - ctg55	S1792	Marker	117.00 - 143.00 (bands)	Insilico	View Maps
			Rice - JRGF RFLP 2000 - 3	S1792	Marker	1.10 (cM)	Insilico	View Maps
S1714	Marker	1.60	Rice - I-Map (FPC) - ctg55	S1714	Marker	159.00 - 166.00 (bands)	Automated name-based	View Maps
			Rice - AGI FPC 2002 - ctg3	S1714	Marker	203.00 - 219.00 (bands)	Automated name-based	View Maps
			Rice - I-Map (FPC) - ctg3	S1714	Marker	203.00 - 219.00 (bands)	Automated name-based	View Maps
			Rice - AGI FPC 2002 - ctg55	S1714	Marker	159.00 - 166.00 (bands)	Automated name-based	View Maps

Correspondence Matrix

Grab File Edit Capture Window Help [Desktop 2] (100%) Mon 9:38 AM

Welcome to the Matrix

http://oakhill.homeip.net:8080/cmap/matrix?species_aid=rice&map_set_aid=&map_name=&prev_species_aid=

Home | Genetic & Comparative Maps | Matrix | Feature Search | Map Set Info | Help Data Source: Gramene Submit

Welcome to the Matrix

Restrict Reference Sets By: Rice --All Map Sets-- --All Maps-- Submit

Reference Set	Physical			Genetic														
	Rice	Maize		Rice										Barley	Wheat	Oat		
JRGP RFLP 2000	2696	2384	-	N/A	106	174	53	-	14	311	140	70	76	42	28	33	23	84
Cornell RFLP 1994	361	234	3	106	N/A	623	130	1	2	161	121	150	79	56	12	120	158	197
Cornell RFLP 2001	465	320	28	174	623	N/A	169	23	2	179	158	170	90	64	7	117	159	244
Cornell SSR 2001	354	264	-	53	130	169	N/A	169	6	54	110	121	48	23	1	4	16	27
IRMI 2003	1805	185	-	-	1	23	169	N/A	-	-	22	24	5	-	-	-	-	-
Morph 2000	20	20	-	14	2	2	6	-	N/A	-	7	2	-	-	4	-	-	5
Huazhong RFLP 1997	366	297	-	311	161	179	54	-	-	N/A	101	73	59	35	5	15	23	39
IGCN 1998	226	161	-	140	121	158	110	22	7	101	N/A	125	64	35	-	7	11	21
KRGRP 1998	188	123	-	70	150	170	121	24	2	73	125	N/A	51	25	-	13	17	37
TTU CTIR 2000	125	97	-	76	79	90	48	5	-	59	64	51	N/A	27	1	10	15	30
TTU IRIR 2000	89	70	-	42	56	64	23	-	-	35	35	25	27	N/A	1	8	15	26
	I-Map (FPC)	AGI FPC 2002	AGI FPC 2002	JRGP RFLP 2000	Cornell RFLP 1994	Cornell RFLP 2001	Cornell SSR 2001	IRMI 2003	Morph 2000	Huazhong RFLP 1997	IGCN 1998	KRGRP 1998	TTU CTIR 2000	TTU IRIR 2000	NABGMP SxM 1993	Cornell Synthetic/Opata 1995	Cornell Diploid 1995	IBM neighbors

Feature Search

Grab File Edit Capture Window Help [Desktop 2] (100%) Mon 9:40 AM

Feature Search

http://oakhill.homeip.net:8080/cmap/feature_search?features=rm*&species_aid=rice&feature_type_aid=marker

Home | Genetic & Comparative Maps | Matrix | Feature Search | Map Set Info | Help

Data Source: Gramene Submit

Feature Search

Feature names*: Restrict species: Restrict feature types: Search field:

Separate multiple names with commas or whitespace. Use "" or "%" for wildcards. To find features with spaces in the name, surround the name in double quotes, e.g., "abc 123."

5,043 records found. Showing 1 to 25.

1 | 22 | 43 | 64 | 85 | 106 | 127 | 148 | 169 | 190 | 202 | Next

Feature Name	Feature Type	Species	Map Set	Map Name	Alt. Name	Position
RM1	Marker	Rice	AGI FPC 2002	ctg3		195.00-225.00 [View on Map] [Feature Details]
RM1	Marker	Rice	Cornell SSR 2001	1	RM1	29.70 [View on Map] [Feature Details]
RM1	Marker	Rice	I-Map (FPC)	ctg3		195.00-225.00 [View on Map] [Feature Details]
RM1	Marker	Rice	KRGRP 1998	1	RM1	12.90 [View on Map] [Feature Details]
RM10	Marker	Rice	Cornell SSR 2001	7	RM10	63.50 [View on Map] [Feature Details]
RM10	Marker	Rice	KRGRP 1998	7	RM10	114.90 [View on Map] [Feature Details]
RM100	Marker	Rice	Cornell RFLP 1994	1	RM100	154.10 [View on Map] [Feature Details]
RM1003	Marker	Rice	I-Map (FPC)	ctg21		314.00-344.00 [View on Map] [Feature Details]
RM1003	Marker	Rice	IRMI 2003	1	MRG0003.HAU0003	136.75 [View on Map] [Feature Details]
RM1004	Marker	Rice	I-Map (FPC)	ctg81		135.00-171.00 [View on Map] [Feature Details]
RM1004	Marker	Rice	IRMI 2003	3	MRG0004.HAU0004	144.50 [View on Map] [Feature Details]
RM101	Marker	Rice	Cornell RFLP 2001	12	RM101	45.25 [View on Map] [Feature Details]
RM101	Marker	Rice	Cornell SSR 2001	12	RM101	49.50 [View on Map] [Feature Details]
RM101	Marker	Rice	I-Map (FPC)	ctg255		313.00-343.00 [View on Map] [Feature Details]
RM101	Marker	Rice	IRMI 2003	12	RM101	48.20 [View on Map] [Feature Details]
RM1015	Marker	Rice	I-Map (FPC)	ctg269		80.00-116.00 [View on Map] [Feature Details]
RM1017	Marker	Rice	I-Map (FPC)	ctg65		158.00-188.00 [View on Map] [Feature Details]
RM1018	Marker	Rice	I-Map (FPC)	ctg101		52.00-78.00 [View on Map] [Feature Details]



Coming up

- 0.07 bug fix release
- Easier zooming
- Flipping of maps