



# Serie DS

200-1000

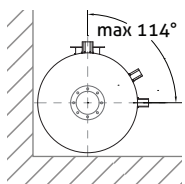
BOLLITORI A DUE SERPENTINI PER ACS  
DOUBLE COIL TANKS FOR DHW



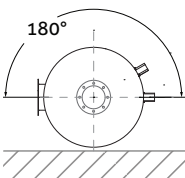
- ▶ Bollitore in acciaio al carbonio  
Carbon steel tank
- ▶ Trattamento di vetrificazione liquida a 850 °C (DIN 4753)  
Double internal vitrification treatment at 850 °C (DIN 4753)
- ▶ Sistema completo di protezione catodica (DIN 12438)  
System equipped with cathodic protection (DIN 12438)
- ▶ Design anti-batterico per il riscaldamento ACS  
Antibacterial design for DHW heating
- ▶ Ingombro ridotto  
Small footprint
- ▶ Rivestimento in PVC effetto cuoio o metallico (su richiesta)  
PVC cover with leather effect
- ▶ Garanzia di 5 anni  
5-years Warranty

## DIMENSIONI [mm] DIMENSIONS [mm]

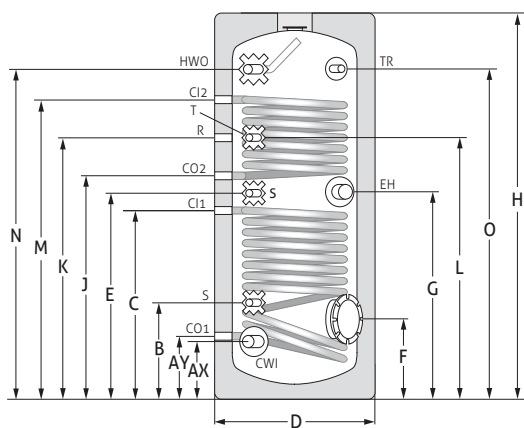
DS 200-500



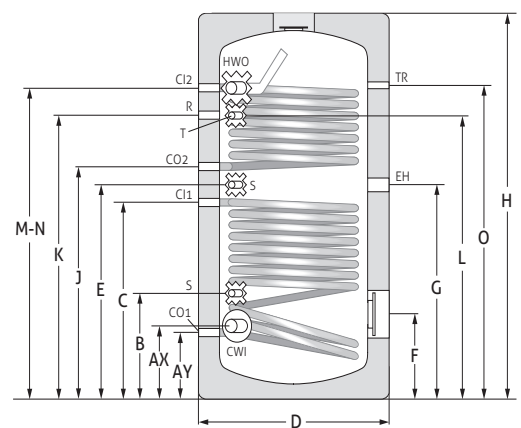
DS 750-1000



DS 200-500



DS 750-1000



Quote / Dimensions		DS 200	DS 300	DS 500	DS 750	DS 1000
<b>AX</b>	Ingresso Acqua Fredda - CWI / Cold Water Inlet	209 [1"]	218 [1"]	241 [1"]	292 [1"1/2]	275 [1"1/2]
<b>AY</b>	Uscita Serpentino Inferiore - CO1 / Lower Coil Outlet	209 [1"]	218 [1"]	251 [1"]	292 [1"]	265 [1"]
<b>B</b>	Sensore - S / Sensor	314 [1/2"]	443 [1/2"]	476 [1/2"]	492 [1/2"]	500 [1/2"]
<b>C</b>	Ingresso Serpentino Inferiore - Cl1 / Lower Coil Inlet	669 [1"]	818 [1"]	866 [1"]	942 [1"]	1040 [1"]
<b>D</b>	Diametro Esterno Ø / External Diameter Ø	600	630	750	1000	1000
<b>E</b>	Sensore - S / Sensor	749 [1/2"]	931 [1/2"]	951 [1/2"]	1012 [1/2"]	1127 [1/2"]
<b>F</b>	Flangia Inferiore / Lower Flange	402 [Ø140]	453 [Ø140]	471 [Ø140]	502 [Ø170]	470 [Ø170]
<b>G</b>	Resistenza Elettrica - EH / Electric Heater	749 [1"1/2]	931 [1"1/2]	951 [1"1/2]	1012 [1"1/2]	1127 [1"1/2]
<b>H</b>	Altezza Totale / Total Height	1400	1620	1700	1780	2020
<b>J</b>	Uscita Serpentino Superiore - CO2 / Upper Coil Outlet	834 [1"]	1043 [1"]	1036 [1"]	1082 [1"]	1215 [1"]
<b>K</b>	Ricircolo - R / Recirculation	989 [3/4"]	1243 [3/4"]	1206 [1"]	1272 [1"]	1492 [1"]
<b>L</b>	Termostato - T / Thermostat	1039 [1/2"]	1198 [1/2"]	1176 [1/2"]	1272 [1/2"]	1482 [1/2"]
<b>M</b>	Ingresso Serpentino Superiore - Cl2 / Upper Coil Inlet	1114 [1"]	1343 [1"]	1396 [1"]	1422 [1"]	1664 [1"]
<b>N</b>	Uscita Acqua Calda - HWO / Hot Water Outlet	1140 [1"]	1383 [1"]	1416 [1"]	1422 [1"1/2]	1655 [1"1/2]
<b>O</b>	Termometro - TR / Thermometer	1135 [1/2"]	1318 [1/2"]	1336 [1/2"]	1382 [1/2"]	1660 [1/2"]

**SPECIFICHE TECNICHE**  
**TECHNICAL SPECIFICATIONS**

**SERBATOIO / TANK:**

**MATERIALE:** Acciaio al carbonio secondo EN 10130, spessore lamiera 2.5 ÷ 4 mm a seconda della taglia. Saldatura automatica MAG.  
**MATERIAL:** Carbon steel according to EN 10130, sheet thickness 2.5÷4 mm depending on the size. Automatic MAG welding.

**PROTEZIONE ANTI-CORROSIONE:** Trattamento di vetrificazione liquida a 850 °C, secondo DIN 4753, e anodo di magnesio (EN 12438).  
**ANTI-CORROSION PROTECTION:** Liquid enameling treatment at 850°C, according to DIN 4753, and magnesium anode (EN 12438).

**PRESSIONE MAX. OPERATIVA / MAX. WORKING PRESSURE:** 10 bar  
**PRESSIONE MAX. COLLAUDO / MAX. TEST PRESSURE:** 15 bar  
**TEMPERATURA MAX. OPERATIVA / MAX. WORKING TEMPERATURE:** 95 °C  
**DIAMETRO FLANGIA SUPERIORE / UPPER FLANGE DIAMETER:** DS 200-500: Ø140 mm; DS 750-1000: Ø170 mm;  
**DIAMETRO FLANGIA INFERIORE / LOWER FLANGE DIAMETER:** DS 200-500: Ø140 mm; DS 750-1000: Ø170 mm;

**SERPENTINI / COILS:**

**MATERIALE:** Tubo in acciaio 1", DC-01.  
**MATERIAL:** Steel pipe 1", DC-01.

**PRESSIONE MAX. OPERATIVA / MAX. WORKING PRESSURE:** 15 bar  
**PRESSIONE MAX. COLLAUDO / MAX. TEST PRESSURE:** 25 bar  
**TEMPERATURA MAX. OPERATIVA / MAX. WORKING TEMPERATURE:** 130 °C

**ISOLAZIONE / INSULATION:**

**MATERIALE:** Per versioni DS 200-500: schiuma di poliuretano rigida, densità 52 kg/m<sup>3</sup>, spessore 55 mm;  
Per versioni DS 750-1000, schiuma di poliuretano flessibile e rimovibile, densità 20 kg/m<sup>3</sup>, spessore 100 mm.

**MATERIAL:** For versions DS 200-500: rigid polyurethane foam, density 52 kg/m<sup>3</sup>, thickness 55 mm;  
For versions DS 750-1000, flexible and removable polyurethane foam, density 20 kg/m<sup>3</sup>, thickness 100 mm.

**RIVESTIMENTO / COVER:**

**MATERIALE:** PVC morbido con effetto cuoio, colore rosso.  
**MATERIAL:** Soft red-coloured PVC with leather effect.

Versione Version	Altezza Totale Total Height	Diametro Esterno External Diameter	Capacità Totale Total Capacity	Capacità Serp. Sup. Upper Coil Capacity	Capacità Serp. Inf. Lower Coil Capacity	Area Serpentina Sup. Upper Coil Area	Area Serpentina Inf. Lower Coil Area	Potenza Serp. Sup.* Upper Coil Power*	Potenza Serp. Inf.* Lower Coil Power	Spessore Isolamento Insulation Thickness	Spessore Serbatoio Tank Thickness	Peso a vuoto Empty Weight	Codice Prodotto Product Code	Prezzo (IVA escl.) Price (VAT excl.)
	m	m	L	L	L	m <sup>2</sup>	m <sup>2</sup>	kW	kW	mm	mm	kg		
<b>DS 200</b>	1.40	0.60	192	4.66	5.98	0.73	0.94	13.6	14.4	55	2.5	92	B2.200	
<b>DS 300</b>	1.62	0.63	280	5.98	9.91	0.94	1.55	16.4	22.9	55	2.5	122	B2.300	
<b>DS 500</b>	1.70	0.75	446	7.27	12.55	1.14	1.97	19.2	25.8	55	2.5	161	B2.500	
<b>DS 750</b>	1.78	1.00	716	8.59	15.20	1.35	2.38	20.5	30.2	100	4.0	247	B2.750	
<b>DS 1000</b>	2.02	1.00	828	12.55	19.10	1.97	3.00	25.5	38.5	100	4.0	277	B2.1000	

\* Valore ottenuto considerando una portata del serpentino pari a 900 l/h a 80°C e un range di temperatura del serbatoio ingresso-uscita pari a 15-60 °C.

\* Value obtained considering a flow rate of the coil equal to 900 l/h at 80 °C and a temperature range of the inlet-outlet tank equal to 15-60 °C.