

H: (1) $\pi_{SNAME} (\sigma_{BNAME='红楼'} (B \times L \times S))$

(2) $\pi_{S\#,B\#} (L) \div \pi_{S\#} (\sigma_{CLASS=105} (S))$

(3) $\pi_{B\#} (\sigma_{SNAME='张三'} (S \times L)) - \pi_{B\#} (\sigma_{SNAME='李四'} (S \times L))$

(4) $\sigma_{B_1.B\# \neq B_2.B\#} (P_{B_1}(B) \times P_{B_2}(B))$ 为空: 满足 不为空: 不满足
 $B_1.BNAME = B_2.BNAME$

F: (1) Delete from B where UID# In
 (Select UID# From U where UNAME='张三');

(2) Select Count(*) From C where BID# In
 (Select BID# From B,U where B.UID#=U.UID# and U.UNAME='李四')

And UID# In

(Select UID# From U where UNAME='张三');

(3) Create View SumU (UID#, UNAME, year, Count#)

AS Select UID#, UNAME, year, Count(*) AS count# From B
 Group by UID#, (B.TIME) AS year

Natural Join U

(4) Select UID#, UNAME From SumU where Count# In
 (Select Max(Count#) From SumU);
 where year='2019'.

2. (1) $F_{AC}^+ = \{ABCDE\}$

(2) AB / AC

(3) ~~$AC \rightarrow E$~~

$B \rightarrow C$ ✓

$B \rightarrow E$ ✓

$C \rightarrow B$ ✓

~~$AB \rightarrow C$~~

~~$AB \rightarrow D$~~

$AE \rightarrow D$ ✓

(4)

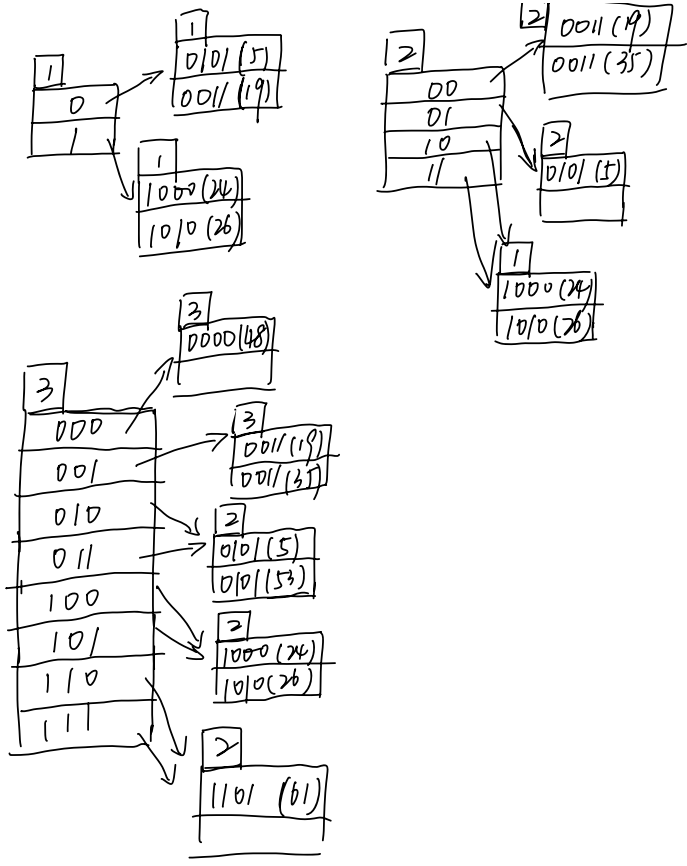
	A	B	C	D	E
ABC	a ₁	a ₂	a ₃	b ₁₄	b ₁₅
ABDE	a ₁	a ₂	b ₂₃	a ₄	a ₅

是

2: A
 R: D
 N:
 LR: B, C, E

(5) ADE, AB, BC, BE

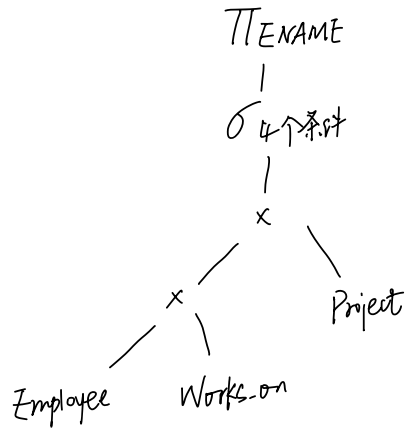
4-1: 5 5 0101 ✓
 19 3 0011 ✓
 24 8 1000 ✓
 26 10 1010 ✓
 35 3 0011 ✓
 48 0 0000 ✓
 53 5 0101 ✓
 61 13 1101 ✓



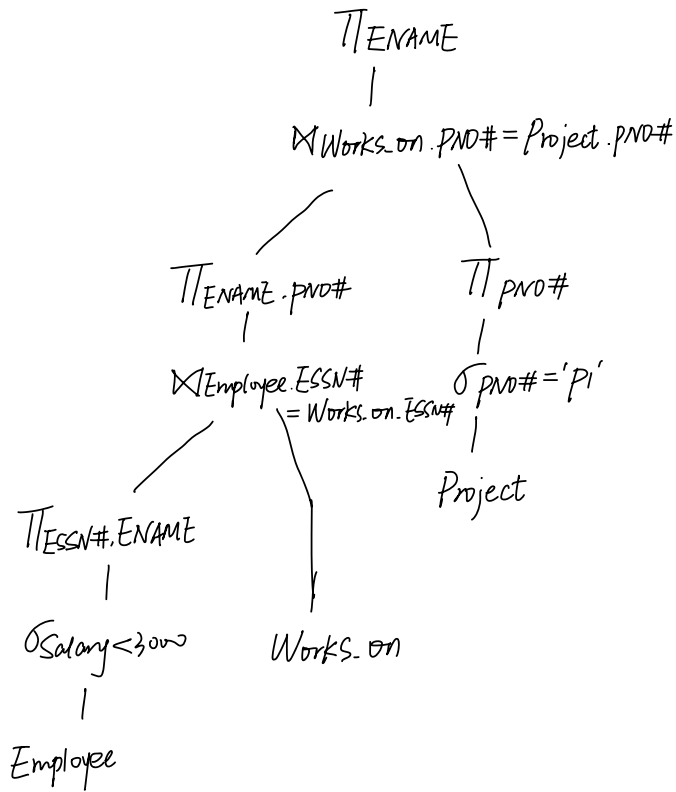
4-2: (1) 归并连接 / 哈希连接: $3(500 + 1000) = 4500$

(2) 块嵌套循环 / 归并 / 哈希连接: $500 + \frac{500 \times 1000}{126 - 1} = 4500$

4-3: (1) $\Pi_{ENAME} (\sigma_{Salary < 3000 \wedge Project.pno = 'P1' \wedge Employee.ESSN\# = Works.on.ESSN\# \wedge Works.on.pno\# = Project.pno\#} (Employee \times Works.on) \times Project)$



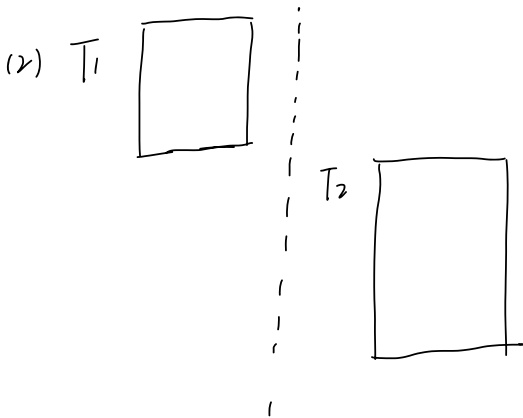
(2)



4-4 (1) 2PL: 事务分加锁、解锁两阶段。加锁阶段只能给变量加锁。解锁阶段只能给变量解锁。

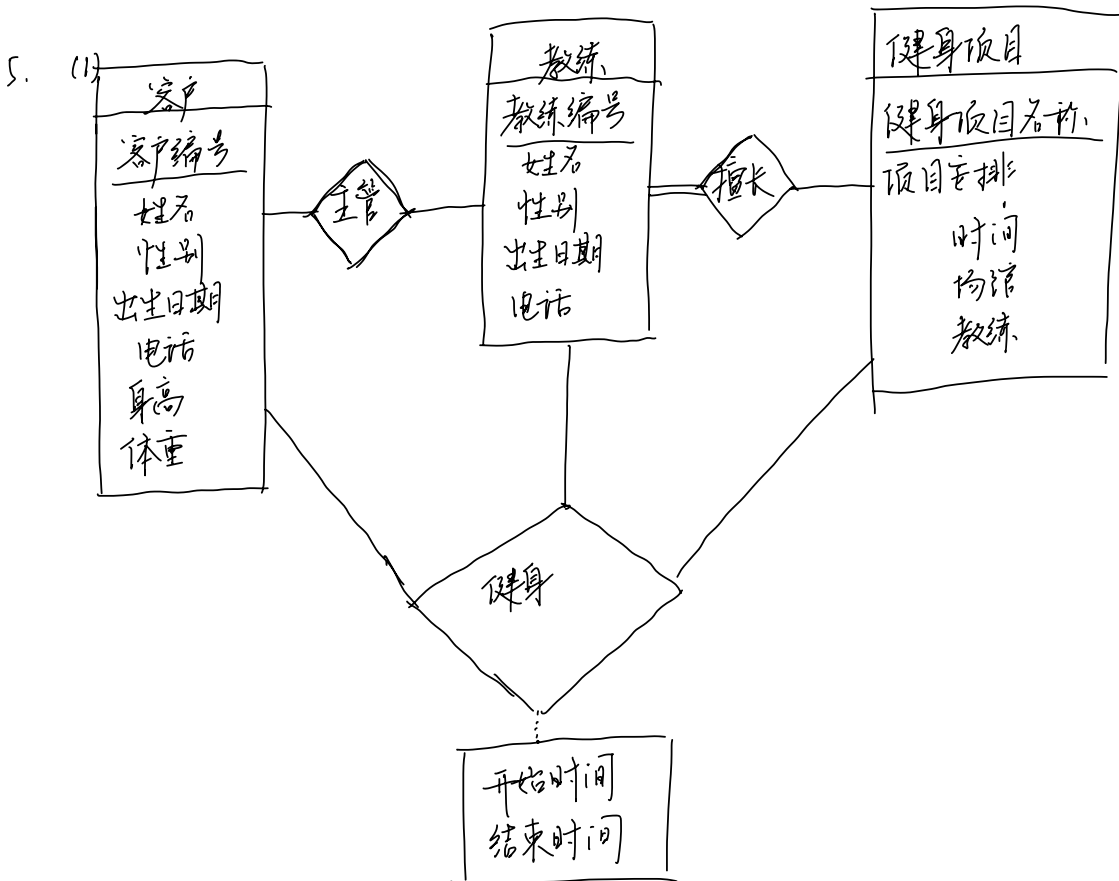
T_1 : Lock-S(A)
 Lock-x(B)
 r(A)
 Unlock(A)
 r(B)
 if $A > B$ then $B := A$
 w(B)
 Unlock(B)

T_2 : Lock-S(B)
 Lock-x(A)
 r(B)
 Unlock(B)
 r(A)
 if $B < 0$ then $A := B * B$
 w(A)
 Unlock(A)



(3) 如: T_1 Lock-S(A) | T_2
 | Lock-S(B)
 | Lock-X(A)
 Lock-X(B) |

- 4-5: (1) 由 12 知: 0
 (2) 由 0, 1, 2, 6, 9, 10 知 T_1, T_3
 (3) redo: 无 undo: T_1, T_3



- (2) 客户 (编号, 姓名, 性别, 出生日期, 电话, 身高, 体重)
 教练 (编号, 姓名, 性别, 出生日期, 电话)
 健身项目 (名称, 时间, 场馆, 教练编号)
 主管 (客户编号, 教练编号)
 健身记录 (客户编号, 教练编号, 开始时间, 结束时间, 训练场馆, 项目名称)
 擅长 (教练编号, 项目名称)