

KMEM — KDCA 1700 06/04



Block Time

IN : _____

OUT : _____

TOTAL : _____

Flight Time

ON : _____

OFF : _____

TOTAL : _____

Fuel Totals

START : _____

REMAIN : _____

USED : _____

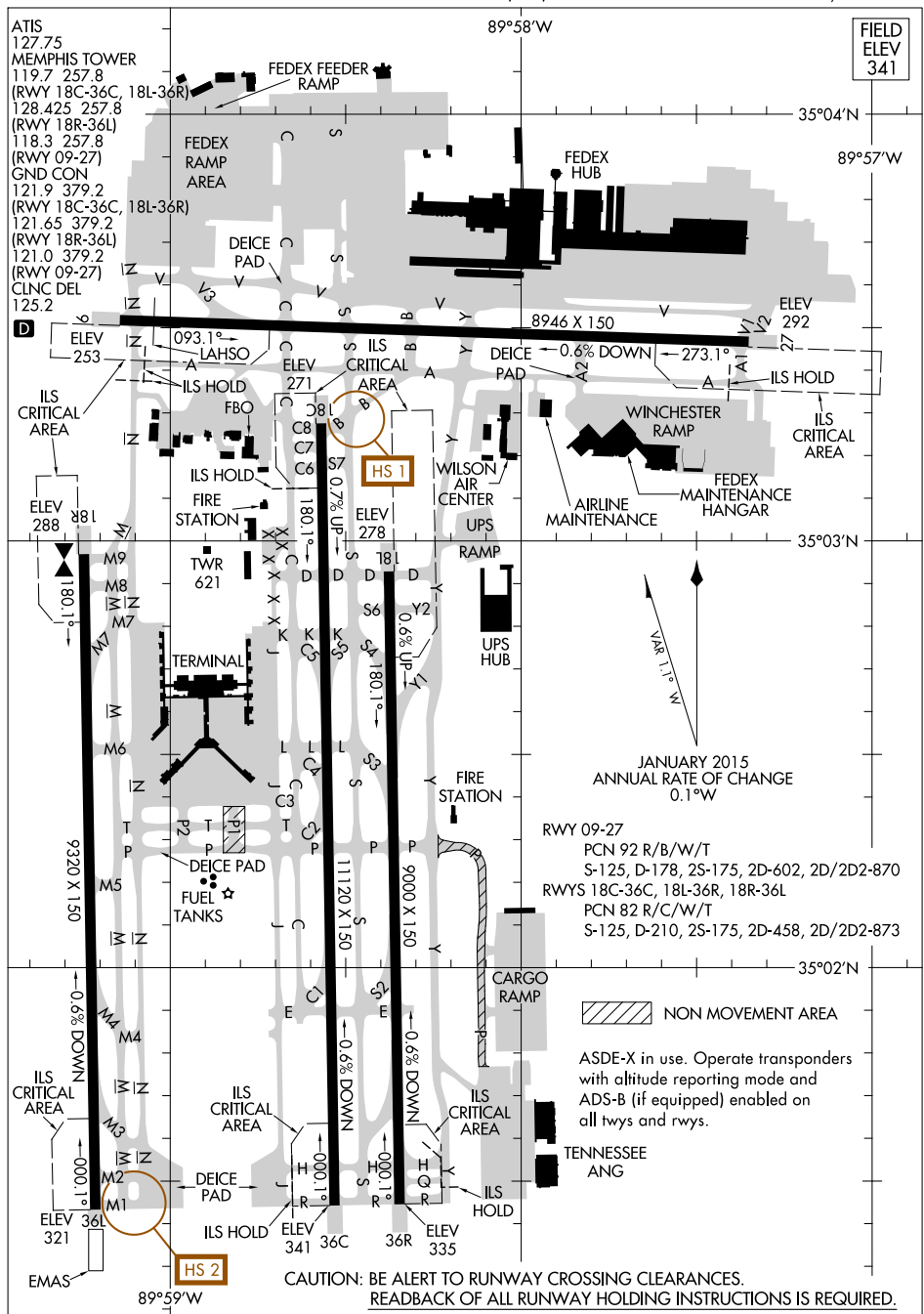
Planned Route

PITEW BAZOO GLAZR IBATE GBERG SEALZ

Squawk Code

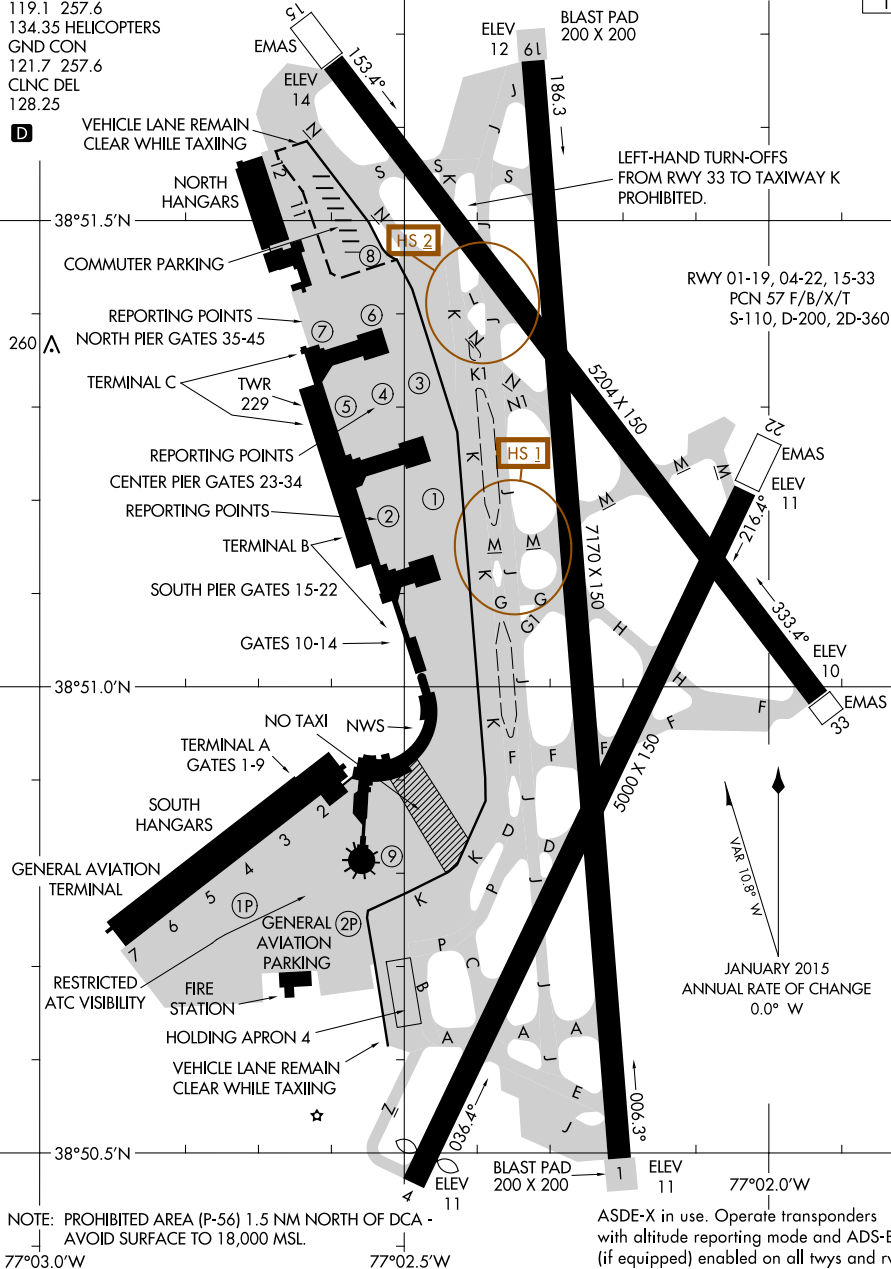
Clearance

Waypoint	Route	wDir	wSpd	TAS	Track	TH	MH	GS	Dist	ETE	ATE	Fuel	Fuel
	Altitude	Temp (dev)			WCA	Var				ETO	ATO	EFR	AFR
KMEM N 35°02.55' W 089°58.60'	•D→	52°	6	254	91°	90°	89°	250	43.7	8.7		0.0	
PITEW N 35°01.48' W 089°05.43'	↗	23°C (+8°)			-1°	-1°				8.7		0.0	
TOC N 35°29.36' W 087°33.75'	↗	0°C (+11°)	9	397	69°	68°	70°	399	80.1	11		0.0	
BAZOO N 35°58.54' W 085°52.20'	•D→	298°	21	459	-1°	+2°	70°	473	87.7	20		0.0	
GLAZR N 36°25.35' W 084°46.82'	25000	-26°C (+8°)	24	459	70°	68°	70°	473	87.7	11		0.0	
IBATE N 36°59.21' W 083°13.67'	•D→	299°	27	458	-2°	+2°	65°	472	59.3	31		0.0	
GBERG N 37°56.15' W 080°41.09'	25000	-27°C (+7°)	32	458	63°	60°	65°	472	59.3	7.5		0.0	
SEALZ N 38°25.39' W 079°17.44'	•D→	299°	30	456	-3°	+4°	68°	474	82.2	38		0.0	
TOD N 38°51.09' W 077°02.26'	25000	-28°C (+7°)	33	455	64°	61°	67°	476	134.1	10		0.0	
KDCA N 38°51.09' W 077°02.26'	•D→	297°	33	455	-3°	+5°	67°	476	134.1	49		0.0	
	25000	-30°C (+5°)	33	455	66°	63°	71°	474	72.1	17		0.0	
	•D→	303°	33	455	76°	73°	82°	477	4.1	1h06		0.0	
	25000	-30°C (+4°)	33	455	-3°	+8°	82°	477	4.1	9.1		0.0	
	•D→	303°	33	455	76°	73°	82°	477	104.9	1h15		0.0	
	25000	-31°C (+4°)	33	455	-3°	+9°	82°	477	104.9	0.5		0.0	
	•D→	303°	33	455	76°	73°	82°	477	104.9	1h15		0.0	
	25000	-31°C (+4°)	33	455	-3°	+9°	82°	477	104.9	17		0.0	
	•D→	303°	33	455	76°	73°	82°	477	104.9	1h33		0.0	



ATIS	
132.65	
WASHINGTON TOWER	
119.1	257.6
134.35 HELICOPTERS	
GND CON	
121.7	257.6
CLNC DEL	
128.25	

CAUTION: BE ALERT TO RUNWAY CROSSING CLEARANCES.
READBACK OF ALL RUNWAY HOLDING INSTRUCTIONS IS REQUIRED.

FIELD
ELEV
14

NE-3, 28 APR 2016 to 26 MAY 2016