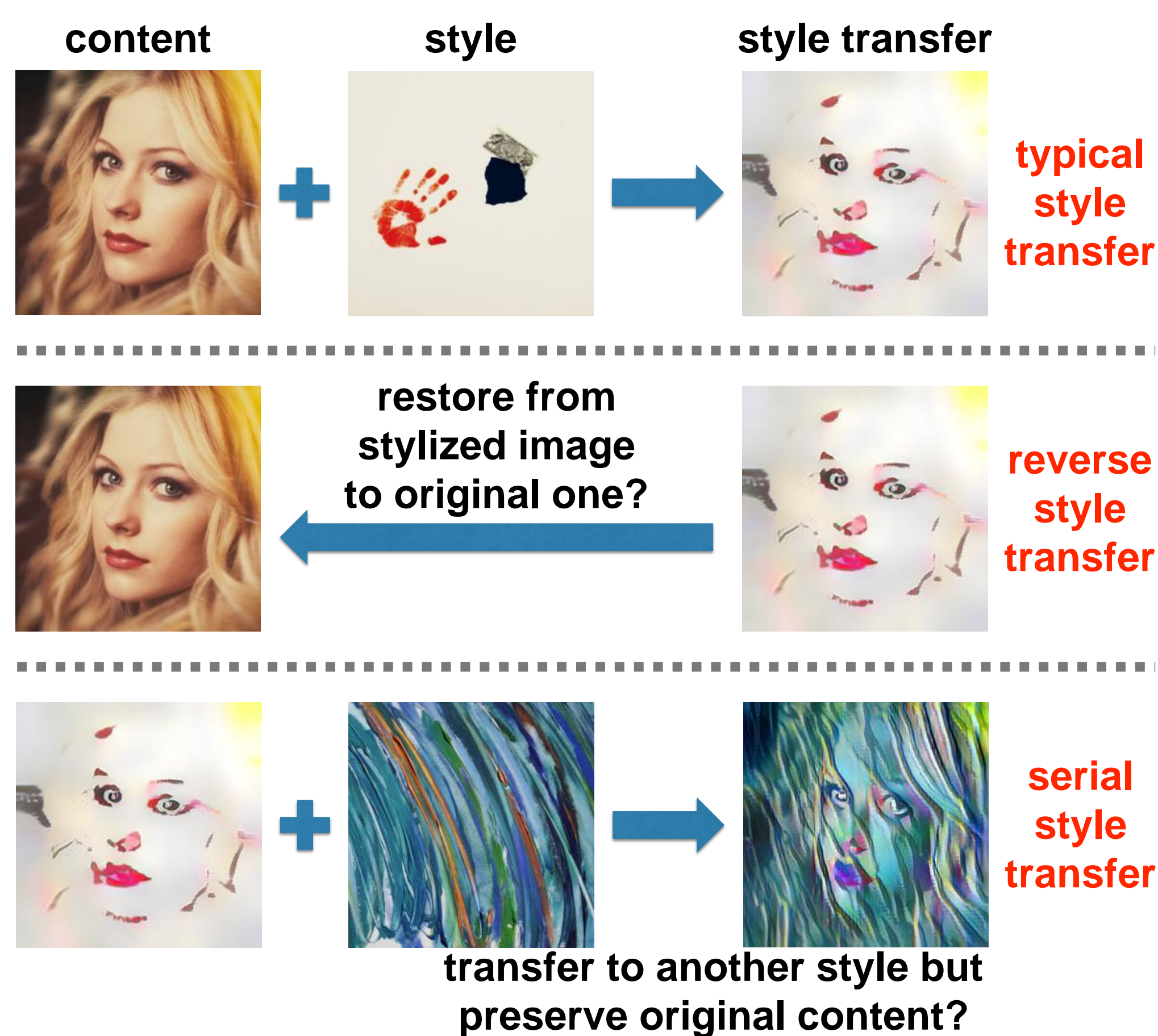
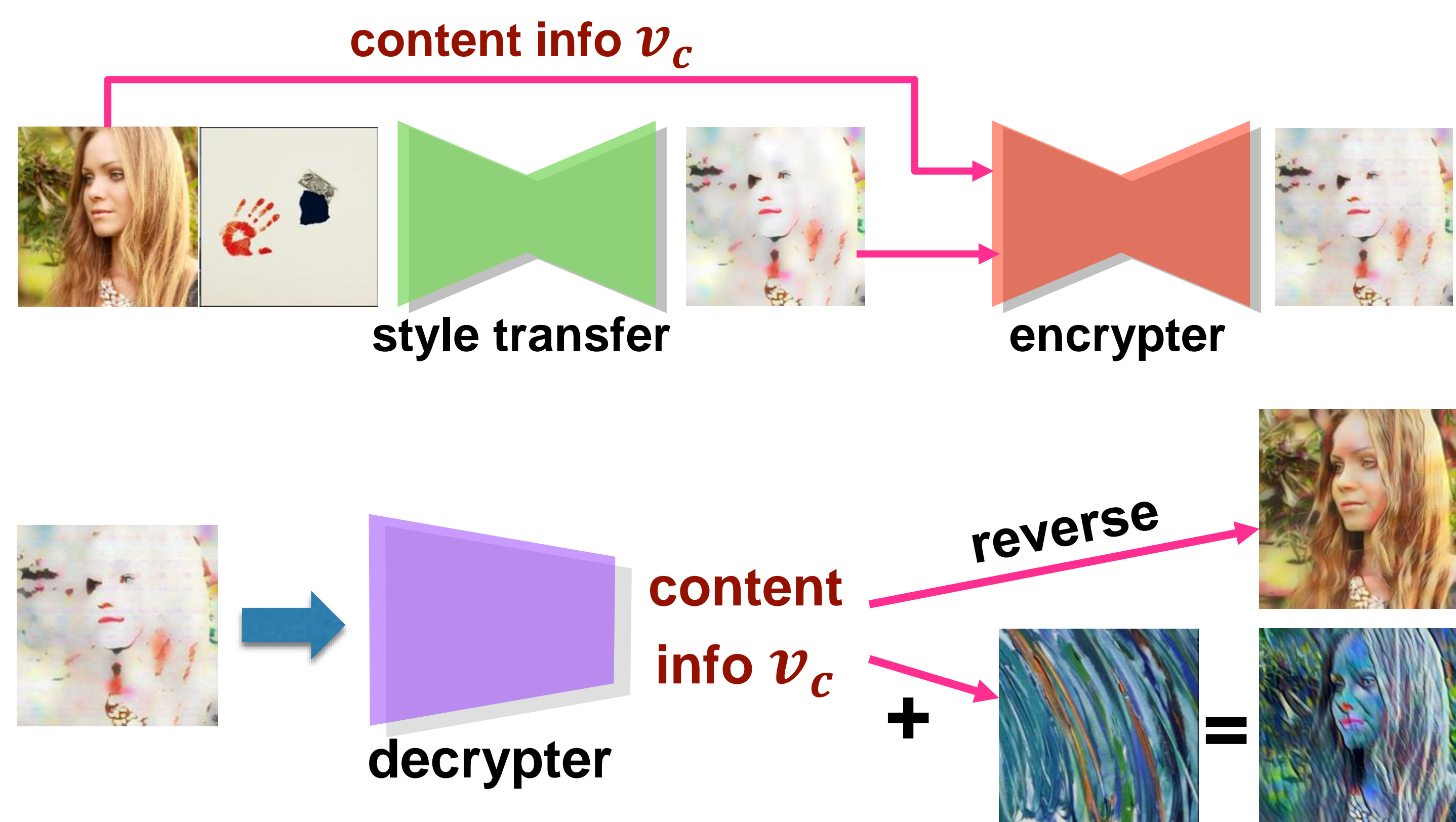


Objectives

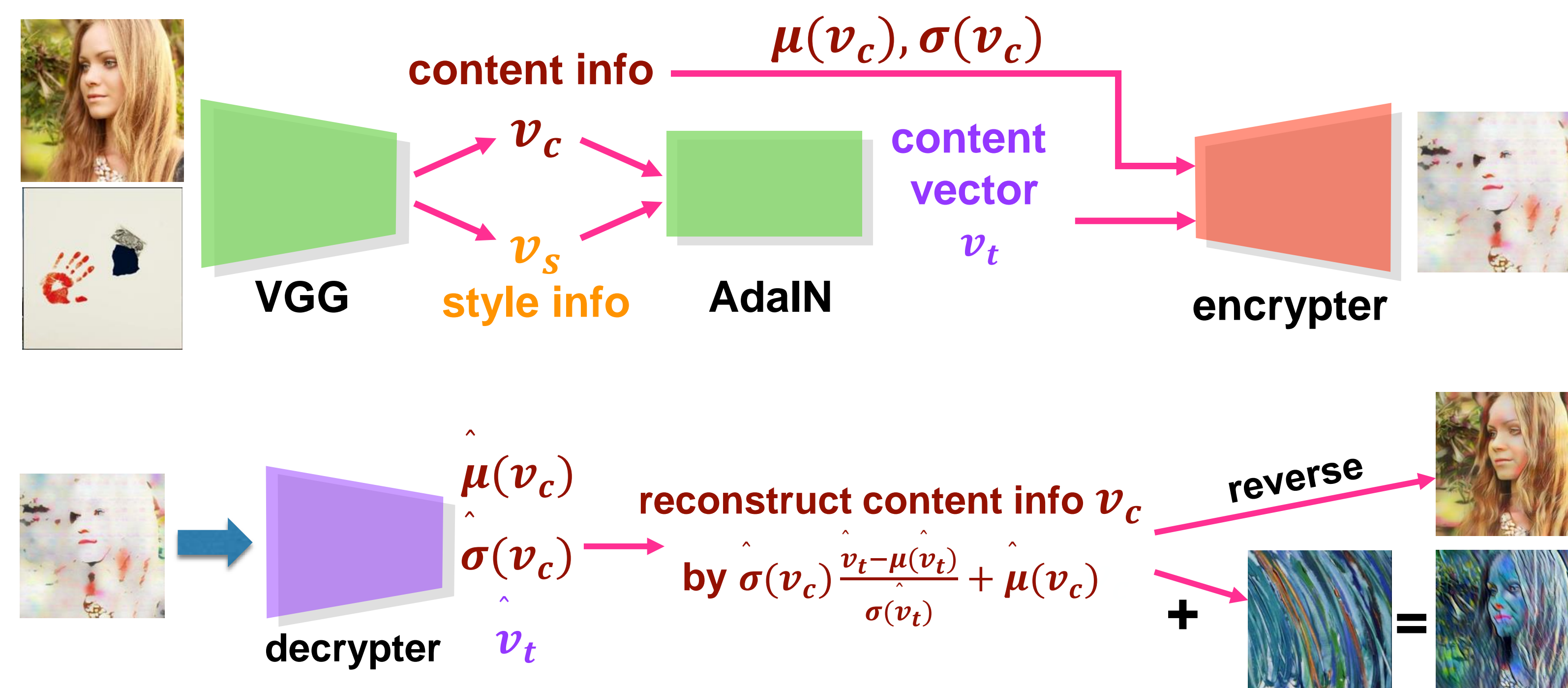


Two Proposed Approaches

- Two-stage model hides content feature map into the stylized image.



- End-to-end Model encrypts content statistics during stylization



Experimental Results

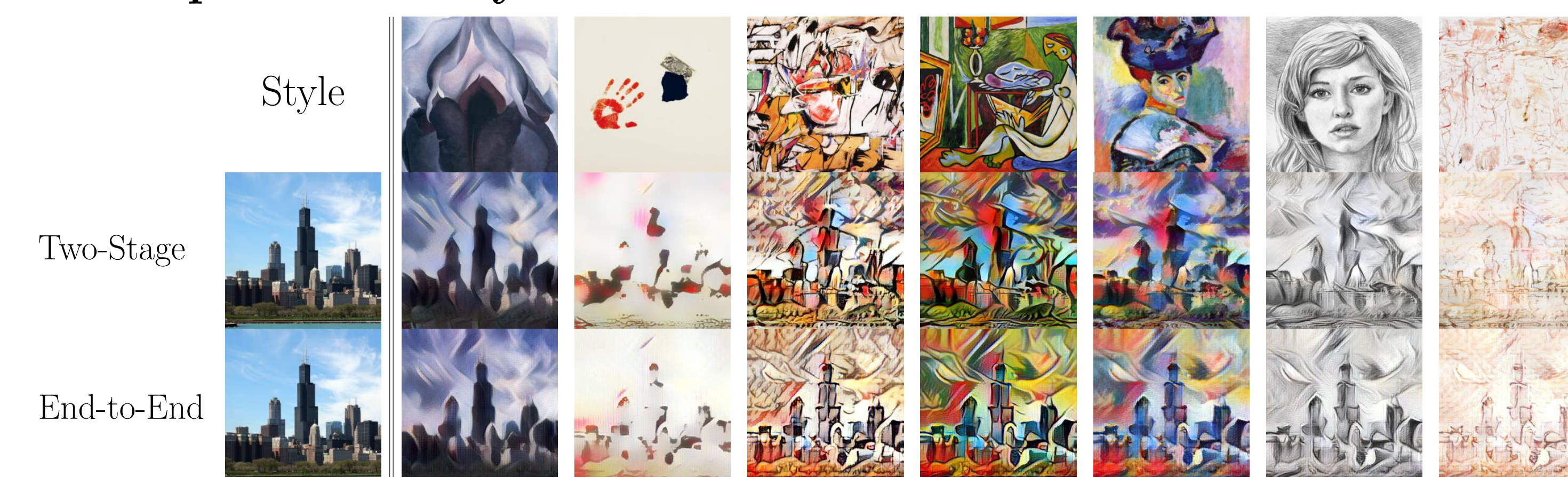
- Qualitative Evaluation



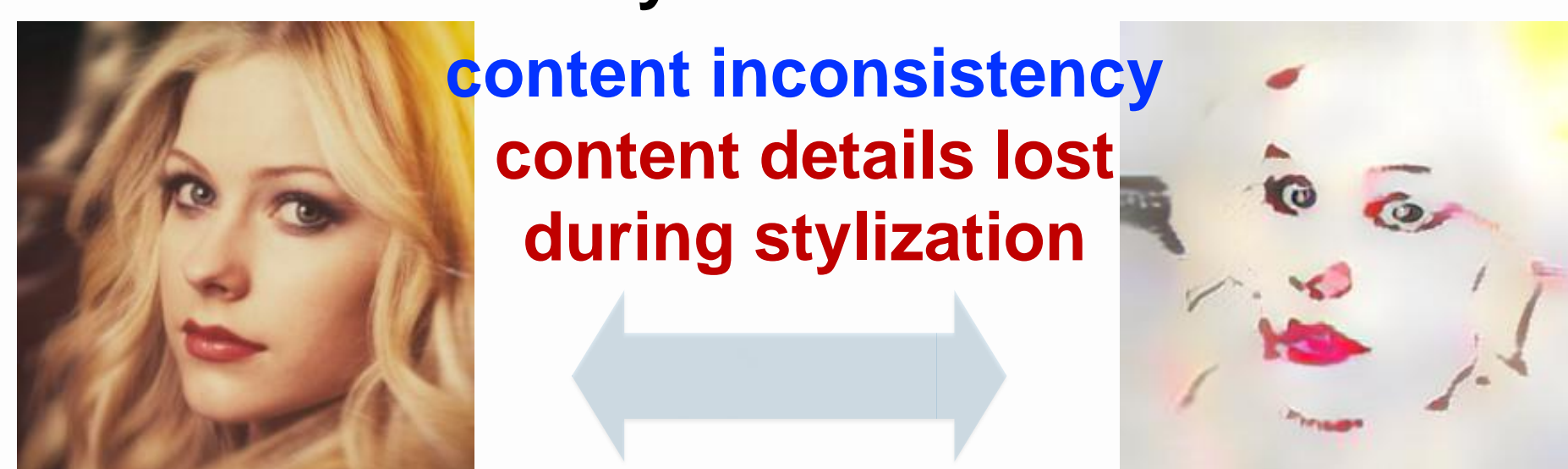
- Quantitative Evaluation

	Reverse Style Transfer			Serial Style Transfer		
	L2	SSIM	LPIPS	L2	SSIM	LPIPS
Gatys <i>et al.</i>	4.4331	0.2033	0.3684	7.5239	0.0472	0.4317
AdaIN	0.0368	0.3818	0.4614	0.0213	0.5477	0.3637
WCT	0.0597	0.3042	0.5534	0.0568	0.3318	0.5048
Our two-stage	0.0187	0.4796	0.3323	0.0148	0.7143	0.2437
Our end-to-end	0.0193	0.5945	0.3802	0.0104	0.8523	0.1487

- Multiple Serial Style Transfer



None of the existing methods can easily achieve these tasks



Style Transfer + Steganography

hide content info. of original image into stylized one