

EASTSIDE CONSULTANTS, INC.

1320 N.W. Mall Street, Suite B • Issaquah, WA 98027

Phone: (425) 392-5351 • Fax: (425) 392-4676

LETTER OF TRANSMITTAL

TO THE MOUNTAINEERS
7700 SAND POINT WAY NE
SEATTLE, WA.
98115

DATE	9/1/10	JOB NO.	09067
ATTENTION			
RE:	RECORD OF SURVEY		
	NEAR PROPERTY ON		
	STAMPEDE PASS ROAD		

GENTLEMEN:

WE ARE SENDING YOU Attached Under separate cover via _____ the following items:

- Shop drawings Prints Plans Samples Specifications
 Copy of letter Change order _____

COPIES	DATE	NO.	DESCRIPTION
1	8/10	2/12	RECORD OF SURVEY

THESE ARE TRANSMITTED as checked below:

- For approval Approved as submitted Resubmit _____ copies for approval
 For your use Approved as noted Submit _____ copies for distribution
 As requested Returned for corrections Return _____ corrected prints
 For review and comment _____
 FOR BIDS DUE _____ 20____ PRINTS RETURNED AFTER LOAN TO US

REMARKS _____

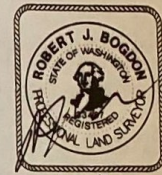
COPY TO FILE SIGNED: RICHARD KUTZ

If enclosures are not as noted, kindly notify us at once.

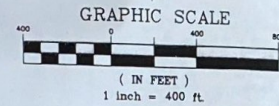
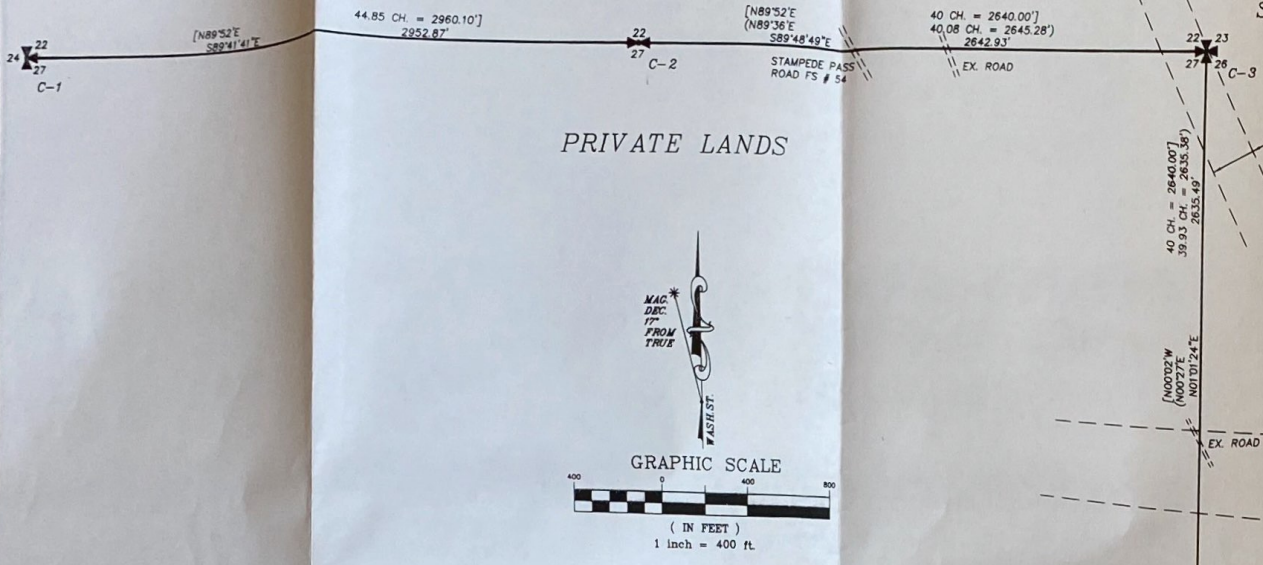
NATIONAL FOREST SYSTEM LANDS

SOUTH KEECHELUS LAKE CADASTRAL SURVEY
SECTIONS 22, 26 AND 34, T21N, R12E. W.M.
KITITAS COUNTY, WASHINGTON

08/11/2010 02:54:25 PM V: 37 P: 39 201008110026
ESTSIDE CONSULTANTS
Kittitas County Auditor
Page 1 of 2



7/27/2010



MERIDIAN: LAMBERT GRID NORTH
WASHINGTON STATE COORDINATE SYSTEM
OF NAD 83/91 - NORTH ZONE

CONVERGENCE = -0°37'40" AT SW COR 26-21-12.

AVERAGE COMBINED FACTOR = 0.99984888
ALL DISTANCES SHOWN HEREON ARE GRID
DISTANCE UNLESS OTHERWISE NOTED.

LEGEND:

- [] = GLO BEARING DISTANCE
- () = BLM BEARING DISTANCE
- = BOUNDARY LINE POSTED, BLAZED, & PAINTED
- ⊕ = FOUND SECTION CORNER
- ⊕ = FOUND QUARTER CORNER
- ⊕ = FOUND CLOSING SECTION CORNER
- C-1 = CORNER CODE, SEE SHEET 2 OF 2 FOR DESCRIPTION.

LOCATION INDEX:
SECTIONS 22, 26 AND 34 T21N, R12E, W.M.

	PRIVATE	
(22)		(23)
NFSL		LANDS
X X X X		
PRIVATE	X	
	NFSL	(26)
	X X	
LANDS		
	X X	PRIVATE
NFSL		(35)
(34)		LANDS

EXAMINED AND ACCEPTED FOR THE U.S.D.A. FOREST SERVICE
THIS 30th DAY OF Aug 2010.

Robert J. Bogdon
SIGNATURE C.O.R.

I CERTIFY THAT THIS SURVEY WAS PERFORMED AT THE
REQUEST OF THE FOREST SERVICE SUPERVISOR, WENATCHEE
NATIONAL FOREST.

Clinton D. Bohl
SIGNATURE DATE 8/4/10

RECORDER'S CERTIFICATE 201008110026

FILED FOR RECORD THIS 11th DAY OF Aug 2010 AT 2:54 PM
IN BOOK 37 OF SURVEYS AT PAGE 39 AT THE
REQUEST OF ROBERT J. BOGDON

Gerald Pettit MGR.
K. Hernandez SUPT. OF RECORDS

SURVEYOR'S CERTIFICATE

THIS MAP CORRECTLY REPRESENTS A SURVEY MADE
BY ME OR UNDER MY DIRECTION IN CONFORMANCE WITH
THE REQUIREMENTS OF THE SURVEY RECORDING ACT AT
THE REQUEST OF U.S.D.A. FOREST SERVICE
IN JULY 2010.

Robert J. Bogdon
ROBERT J. BOGDON
CERTIFICATE NO. 33487

EASTSIDE CONSULTANTS, INC.
ENGINEERS-SURVEYORS
1320 N.W. MALL ST., SUITE B
ISSAQUAH, WASHINGTON 98027
PHONE: 425-892-5351
FAX: 425-892-4676

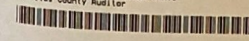
RECORD OF SURVEY

FOR
U.S.D.A. FOREST SERVICE
SECTIONS 22, 26 AND 34 T21N R12E W.M.
CONTRACT NO. AG-05GG-D-09-0027

DWN BY R. KITZ	DATE 4/10	JOB NO. 09067
CHKD BY R. BOGDON	SCALE 1" = 400'	SHEET 1 OF 2

SOUTH KEECHELUS LAKE CADASTRAL SURVEY SECTIONS 22, 26 AND 34, T21N, R12E. W.M. KITITAS COUNTY, WASHINGTON

08/11/2010 02:54:25 PM V: 37 P: 40 20100810026
133 00
EASTSIDE CONSULTANTS
KITITAS County Auditor Page 2 of 2



C-1
T21N
R11E R12E
S 24 | S 22
S 27 | S 27
1970

AT CORNER LOCATION FOUND A STANDARD BUREAU OF LAND MANAGEMENT (BLM) MONUMENT FIRMLY SET IN A SMALL MOUND OF STONE MARKED AS SHOWN. CORNER IS ON A STEEP SOUTH SLOPE WITH AN OLD GROWTH TIMBER STAND TO WEST.
FOUND STEEL POST WITH 54-2 AND 54-9 SIGNS ON GROUND RESET POST AT 1.8' SOUTH.
FOUND 34" FIR WITH HEALED FACE @ S82E 39.9' (RECORD S84E 40.3').
NEW BT'S:
8" NOBLE FIR @ N15E 29.9' MARKED "T21N R12E S22 BT".
16" NOBLE FIR @ N53W 27.1' MARKED "BT" AT BASE "X" 4' UP.
SET POST WITH BM 102 STICKER 2.8' EAST.

C-5
T21N R12E
S 27 | S 27
S 34 | S 34
1971

AT CORNER LOCATION FOUND A STANDARD BUREAU OF LAND MANAGEMENT (BLM) MONUMENT FIRMLY SET MARKED AS SHOWN. VERY FEW STONES IN AREA. CORNER IS IN A SECOND GROWTH TIMBER STAND ON A MILD EAST SLOPE.
FOUND POSTS WITH 54-2 AND 54-4 SIGNS 5.0' WEST.
FOUND 16" FIR WITH HEALED FACE @ N21W 31.4' (RECORD N22W 31.7').
FOUND 13" HEMLOCK WITH MOSTLY HEALED FACE @ S47E 17.6' (RECORD S58E 17.8').
NEW BT'S:
12" WHITE FIR @ S39W 25.0' MARKED "1/4 S 34 BT".
SET POST WITH P71-10 AND BM 102 STICKERS 2.3' EAST.

C-2
S 22
S 27
T21N R12E
1970

AT CORNER LOCATION FOUND A STANDARD BUREAU OF LAND MANAGEMENT (BLM) MONUMENT FIRMLY SET IN A MOUND OF STONE MARKED AS SHOWN. CORNER IS ON A STEEP NORTH SLOPE IN A STAND OF THICK REPRODUCTION.
FOUND STEEL POST WITH 54-2 AND 54-9 SIGNS @ N75E 2.7'.
FOUND ROTTEN HEMLOCK STUMP WITH VISIBLE SCRIBE @ N35W 11.6' (RECORD N37W 11.2').
FOUND SAVED HEMLOCK STUMP WITH VISIBLE SCRIBE @ S35W 21.5' (RECORD S36W 21.8').
NEW BT'S:
6" FIR @ N88E 56.8' MARKED "BT" AT BASE "X" 4' UP.
5" FIR @ N29-30E 13.4' MARKED "BT" AT BASE "X" 4' UP.
SET POST WITH BM 102 STICKER 1.9' WEST.

C-6
T21N R12E
S 27 | S 26
S 34 | S 35
1971

AT CORNER LOCATION FOUND A STANDARD BUREAU OF LAND MANAGEMENT (BLM) MONUMENT FIRMLY SET IN A MOUND OF STONE MARKED AS SHOWN. CORNER IS IN A SECOND GROWTH TIMBER STAND ON A MILD NORTHEAST SLOPE.
FOUND POSTS WITH 54-2 AND 54-4 SIGNS LAYING CLOSE TO MONUMENT RESET POST WITH 54-2 AND 54-4 SIGNS @ 3.5' NORTH, 4.2' EAST AND 3.9' SOUTH.
FOUND 22" FIR WITH HEALED FACE @ N22E 8.5' (RECORD N21E 8.6').
FOUND 10" FIR SNAG WITH MOSTLY HEALED FACE @ S39E 34.5' (RECORD S40E 34.3').
FOUND 28" FIR WITH HEALED FACE @ S44W 16.3' (RECORD 9" HEMLOCK @ S46W 16.8').
FOUND 16" FIR WITH HEALED FACE @ N56W 28.3' (RECORD N57W 28.4').
NEW BT'S:
6" FIR @ 85E 48.5' MARKED "BT" AT BASE "X" 4' UP.

C-3
T21N R12E
S 22 | S 23
S 27 | S 26
1971

AT CORNER LOCATION FOUND A STANDARD BUREAU OF LAND MANAGEMENT (BLM) MONUMENT FIRMLY SET IN A MOUND OF STONE MARKED AS SHOWN. CORNER IS AT THE NORTHEAST EDGE OF THE RAIL ROAD R/W.
FOUND DAVID EVANS ALUMINUM POST @ EAST 1.8'.
FOUND 30" FIR WITH HEALED FACE @ S81E 17.7' (RECORD S82E 17.8').
FOUND 24" PINE WITH PARTIALLY OPEN FACE @ N41E 43.7' (RECORD N42E 43.9').
FOUND SAVED FIR STUMP @ N71W 9.5' (RECORD N72W 9.6').
NEW RP'S:
POWER POLE # 271511/79746 @ S45W 40.4'.
SET POSTS WITH P71-10 AND BM 102 STICKERS 3.4'SOUTH AND 2.6' WEST.

C-7
S 26
S 35
T21N R12E
1970

AT CORNER LOCATION FOUND A STANDARD BUREAU OF LAND MANAGEMENT (BLM) MONUMENT FIRMLY SET IN A MOUND OF STONE MARKED AS SHOWN. CORNER IS IN A SECOND GROWTH TIMBER STAND ON A MILD EASTERLY SLOPE AT THE SOUTHERN EDGE OF THE BPA R/W.
FOUND DAVID EVANS ALUMINUM POST @ S50W 1.2'.
FOUND 13" HEMLOCK WITH MARKS AND TAGS ON GROUND @ N56±W 25±' (RECORD N56W 25.7').
FOUND VERY DECAYED FIR STUMP @ S65±E 3.3±' (RECORD SAME).
FOUND 15" HEMLOCK SNAG WITH HEALED FACE @ S39W 16.3' (RECORD S39-30W 16.5').
NEW BT'S:
6" FIR @ N16E 6.1' MARKED "BT" AT BASE "X" 4' UP.
6" PINE @ S68E 21.6' MARKED "BT" AT BASE "X" 4' UP.
8" HEMLOCK @ S27E 21.9' MARKED "1/4 S 35 BT".
SET POST WITH P71-10 AND BM 102 STICKERS 2.6' WEST.

C-4
S 27 | S 26
T21N R12E
1971

AT CORNER LOCATION FOUND A STANDARD BUREAU OF LAND MANAGEMENT (BLM) MONUMENT FIRMLY SET IN A MOUND OF STONE MARKED AS SHOWN. CORNER IS AT THE EDGE OF AN OLD GROWTH TIMBER STAND TO THE EAST IN A VERY FLAT AREA.
FOUND POST WITH 54-9 SIGN 5.0' SOUTH.
FOUND 20" HEMLOCK SNAG WITH VISIBLE SCRIBE @ N16E 21.7' (RECORD N15E 21.8').
FOUND 26" HEMLOCK DOUBLE TREE WITH VISIBLE SCRIBE @ N89E 7.3' (RECORD SAME).
NEW BT'S:
26" HEMLOCK @ S54E 58.8' MARKED "1/4 S 26 BT".
10" HEMLOCK @ S9W 19.4' MARKED "1/4 S 27 BT" PAINTED BLAZE BUT NO 6" BAND AT 6' UP.
SET POST WITH P71-10 AND BM 102 STICKERS 2.6' NORTH.

SURVEY NOTES:

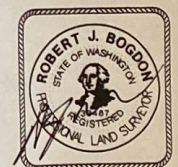
1. BASIS OF BEARING IS THE WASHINGTON STATE PLANE COORDINATE SYSTEM, N.A.D. 83/91 NORTH ZONE, BASED ON FIELD TIES TO WASHINGTON DOT MONUMENTS. ALL DISTANCES SHOWN ARE GRID DISTANCES USING A COMBINED PROJECT SCALE FACTOR OF 0.99984888.
2. FIELD WORK WAS DONE IN SEPTEMBER OF 2009 THROUGH JULY OF 2010 USING A TRIMBLE 4400/5700 GPS SYSTEM AND A NIKON NPL-352 THREE SECOND TOTAL STATION WITH CLOSED TRAVERSE METHODS IN ACCORDANCE WITH W.A.C. 332-130.
3. THE PURPOSE OF THIS SURVEY IS TO POST AND BLAZE THE LINES IN SECTIONS 22, 26 AND 34, TOWNSHIP 21 NORTH RANGE 12 EAST AS SHOWN ON THE SURVEY MAP.
4. THE LINE HAS BEEN POSTED WITH 5 FOOT LONG STEEL POSTS WITH NATIONAL FOREST PROPERTY BOUNDARY (BM-102) DECAL STICKER ATTACHED AT 200 FOOT MAXIMUM SPACING. THE FOREST SERVICE SIDE OF THE LINE HAS BEEN BLAZED AND PAINTED.
5. ALL NEW AND ORIGINAL BEARING TREES REFERENCING CORNERS HAVE A 6" RED BAND AT 5-6 FEET ABOVE GROUND LEVEL, EXCEPT AS NOTED. A 54-3 SIGN FACING THE CORNER AND 54-9 SIGN ATTACHED TO THE BACK OF THE TREE. NEW BEARING TREES ARE SCRIBED IN ACCORDANCE WITH THE MANUAL OF SURVEY INSTRUCTIONS, EXCEPT WHERE NOTED. A BRASS WASHER PLS 18915 IS ATTACHED NEAR THE LETTERS "BT" IN THE BLAZE OF THE TREE WHICH IS ALSO PAINTED RED. BEARING MEASUREMENTS ARE BASED ON A COMPASS DECLINATION OF 17' EAST AND DISTANCES ARE HORIZONTAL MEASUREMENT TO AN 800 NAIL IN THE SIDE CENTER OF THE TREE ON NEW SCRIBED TREES. EXISTING BEARING TREES HAVE BEEN MAINTAINED WITH NEW SIGNS AND PAINT.
6. THE BPA POWER LINE RIGHT OF WAY AND RAIL ROAD RIGHT OF WAY ARE SHOWN AS APPROXIMATE ON THIS DRAWING FROM INFORMATION OBTAINED FROM THE DEPARTMENT OF NATURAL RESOURCES SURVEY DEPARTMENT.
7. AT THE REQUEST OF THE MOUNTAINEERS' OWNERS OF THE PROPERTY IN SECTION 27, NO STEEL POST WERE SET ALONG THIS PORTION OF THE LINE.

SURVEYORS LEGAL DESCRIPTION OF LAND SURVEYED:

THE SOUTH LINE OF SECTION 22, THE WEST AND SOUTH LINES OF THE WEST HALF OF SECTION 26 AND THE NORTH LINE OF THE NORTHEAST QUARTER OF SECTION 34 ALL IN TOWNSHIP 21 NORTH RANGE 12 EAST W. M. KITITAS COUNTY, WASHINGTON.

HISTORY OF SURVEYS:

THE ORIGINAL SURVEY WAS PERFORMED IN 1902 BY ALFRED S. RUTH WHERE HE SURVEYED THE BOUNDARIES AND SUBDIVISIONAL LINES AS SHOWN ON THE OFFICIAL PLAT APPROVED NOVEMBER 6, 1905. IN 1970, PETER A. PETERSON AND GARY T. OVIATT REMOUMENTED CERTAIN ORIGINAL CORNER POINTS WITHOUT SURVEY. FOR THE BUREAU OF LAND MANAGEMENT. IN 1971 CADASTRAL SURVEYOR, DALE T. BEDELL RESURVEYED AND SUBDIVIDED SECTION 26. SINCE 1971 VARIOUS OTHER SURVEYORS HAVE VISITED AND MAINTAINED CORNERS AROUND OR ADJACENT TO SECTION 26. IN AUGUST OF 2009 EASTSIDE CONSULTANTS, CONTRACTED WITH THE UNITED STATES FOREST SERVICE TO MARK AND MAINTAIN THE LINES AND CORNERS AS SHOWN HEREON.



7/27/2010

RECORDER'S CERTIFICATE 20108110026
FILED FOR RECORD THIS 11 DAY OF Aug 2010 AT 2:56 PM
IN BOOK 37 OF SURVEYS AT PAGE 40 AT THE
REQUEST OF ROBERT J. BOGDON
Surveyor's Name
Gerald Pettit MGR. K. Hernandez SUPT. OF RECORDS

SURVEYOR'S CERTIFICATE
THIS MAP CORRECTLY REPRESENTS A SURVEY MADE BY ME OR UNDER MY DIRECTION IN CONFORMANCE WITH THE REQUIREMENTS OF THE SURVEY RECORDING ACT AT THE REQUEST OF U.S.D.A. FOREST SERVICE IN JULY, 2010.
ROBERT J. BOGDON
CERTIFICATE NO. 33487

EASTSIDE CONSULTANTS, INC.
ENGINEERS-SURVEYORS
1320 N.W. MALL ST., SUITE B
188AQUAN, WASHINGTON 98027
PHONE: 425-982-5381
FAX: 425-982-4878

RECORD OF SURVEY		
FOR U.S.D.A. FOREST SERVICE		
SECTIONS 22, 26 AND 34 T21N R12E W.M.		
CONTRACT NO. AG-05GG-D-09-0027		
OWN BY	DATE	JOB NO
R. KITZ	4/10	09067
CHKD BY	SCALE	SHEET
R. BOGDON	N/A	2 OF 2