

# Effect estimate synthesis using non-normal likelihood approximations

Martijn J. Schuemie

2023-05-08

## Contents

<b>1</b>	<b>Introduction</b>	<b>1</b>
<b>2</b>	<b>Simulating some data</b>	<b>2</b>
<b>3</b>	<b>Approximating the likelihood at each site</b>	<b>2</b>
3.1	Generating approximations at all sites . . . . .	4
<b>4</b>	<b>Combining evidence across sites</b>	<b>5</b>
4.1	Fixed-effects model. . . . .	5
4.2	Bayesian random-effects model. . . . .	5
4.3	Choice of prior . . . . .	7
<b>5</b>	<b>Forest plot</b>	<b>7</b>

## 1 Introduction

Observational studies on the effects of treatments are often done across a distributed network of health care databases, with the following characteristics

- **Sharing of individual patient data (IPD) is often not allowed** due to patient privacy concerns and local governance regulations.
- Patients are often exposed for varying lengths of time, and may stop being followed for various reasons, making a time-to-event analysis with right-censoring such as a **Cox proportional hazards** regression the most prevalent analysis.
- Due to the observational nature of the data, some correction for baseline differences between exposure groups is often necessary to avoid confounding. This is often done by **stratifying, matching, or weighting** by propensity score or disease risk score.
- Since data sites often differ in the population they capture or in their capture process, some **heterogeneity between sites** should be assumed to exist.

Because no IPD may be shared, data must be aggregated in some way to avoid patient identifiability before communication. Current practice is to estimate the hazard ratio (with standard error) per database, and combine these across sites using a traditional meta-analysis for random effects. However, with small counts the true per-database likelihood function may no longer be approximately normally distributed, as is assumed by this approach. Especially when zero events are observed in one of the treatment arms but not both, the likelihood is far from normally distributed, yet still holds information on the parameter of interest. Even though databases in a network are typically large in terms of the total number of patients covered, when restricting to patients having specific outcomes while exposed to specific treatments the numbers quickly dwindle to numbers small enough for this issue to be of concern.

This vignette describes how this problem can be solved by using a non-normal approximation of the per-database likelihood. The `EvidenceSynthesis` package supports various approximations of the likelihood that are more appropriate when sample size is small and also still apply when sample sizes are large, allowing sites to contribute information on the overall likelihood distribution of a parameter of interest (ie. the effect of the treatment on the outcome) without sharing IPD. This package further provides functions for synthesizing the likelihood approximations from the various sites to a single estimate.

## 2 Simulating some data

To demonstrate how to use the `EvidenceSynthesis` package, we will generate some simple simulated data. For this, we will use the `simulatePopulations()` function included in the `EvidenceSynthesis` package:

```
library(EvidenceSynthesis)
simulationSettings <- createSimulationSettings(
  nSites = 5,
  n = 10000,
  treatedFraction = 0.75,
  nStrata = 5,
  hazardRatio = 2,
  randomEffectSd = 0.5
)
populations <- simulatePopulations(simulationSettings)
```

Here we specify we want to simulate 5 data sites, each with 10,000 subjects. Of these, 75% should be exposed to the target treatment (the remaining 25% will be in the comparator cohort). At each site, the data are stratified in to 5 strata (e.g. propensity score strata), each with a different baseline risk of the outcome. The target hazard ratio is 2, but there is a random effect with standard deviation = 2 (ie. each site draws its  $\log(\text{hazard ratio})$  from a normal distribution with mean =  $\log(2)$  and standard deviation = 0.5).

The resulting `populations` object is a list of data frames, each with person-level data:

- **x**: Whether the subject is exposed to the target (1) or comparator (0).
- **time**: days of follow-up time (until end of observation or the occurrence of the outcome, whichever came first).
- **y**: whether the outcome occurred (1) or not (0) at the end of follow-up.
- **stratumId**: an integer identifying the stratum (e.g. a propensity-score stratum).

## 3 Approximating the likelihood at each site

In a real study, we would not have all the person-level data available at one site. Instead, each site would have their data behind their organization's firewall, without the ability to share person-level data. To be able to synthesize evidence across sites, we need to share information about the parameter of interest (the effect size) without sharing person-level data. We can do this by approximating the likelihood function of the parameter at each site, and communicating only the parameters of the approximation.

First, we fit our model for the effect of interest. For this we use the `Cyclops` package:

```
library(Cyclops)
# Assume we are at site 1:
population <- populations[[1]]

cyclopsData <- createCyclopsData(Surv(time, y) ~ x + strata(stratumId),
  data = population,
  modelType = "cox"
)
```

```
## as(<numLike>, "dgeMatrix") is deprecated since Matrix 1.5-0; do as(as(as(., "dMatrix"), "generalMatr
cyclopsFit <- fitCyclopsModel(cyclopsData)
```

If we are interested, we can see what the local estimate was of the hazard ratio and its confidence interval:

```
# Hazard ratio:
exp(coef(cyclopsFit))
```

```
##          x
## 0.8000462
```

```
# 95% confidence interval:
exp(confint(cyclopsFit, parm = "x")[2:3])
```

```
## [1] 0.2965148 2.5159796
```

Note that an estimate may not exist at a database, for example if no one in the target or comparator group has the outcome. However, the likelihood may still be informative.

Next, we approximate the likelihood function of our parameter of interest:

```
approximation <- approximateLikelihood(
  cyclopsFit = cyclopsFit,
  parameter = "x",
  approximation = "adaptive grid"
)
head(approximation)
```

```
## # A tibble: 6 x 2
##   point value
##   <dbl> <dbl>
## 1 -2.30 -122.
## 2 -2.29 -122.
## 3 -2.27 -122.
## 4 -2.25 -122.
## 5 -2.24 -122.
## 6 -2.22 -122.
```

Here we use the adaptive grid approximation, which in research has shown to provide a good approximation in many situations. The approximation is represented as a data frame with grid points (log effect size) and values (log likelihood) at the grid points. These parameters can be shared with the study coordinator, without sharing patient-level data.

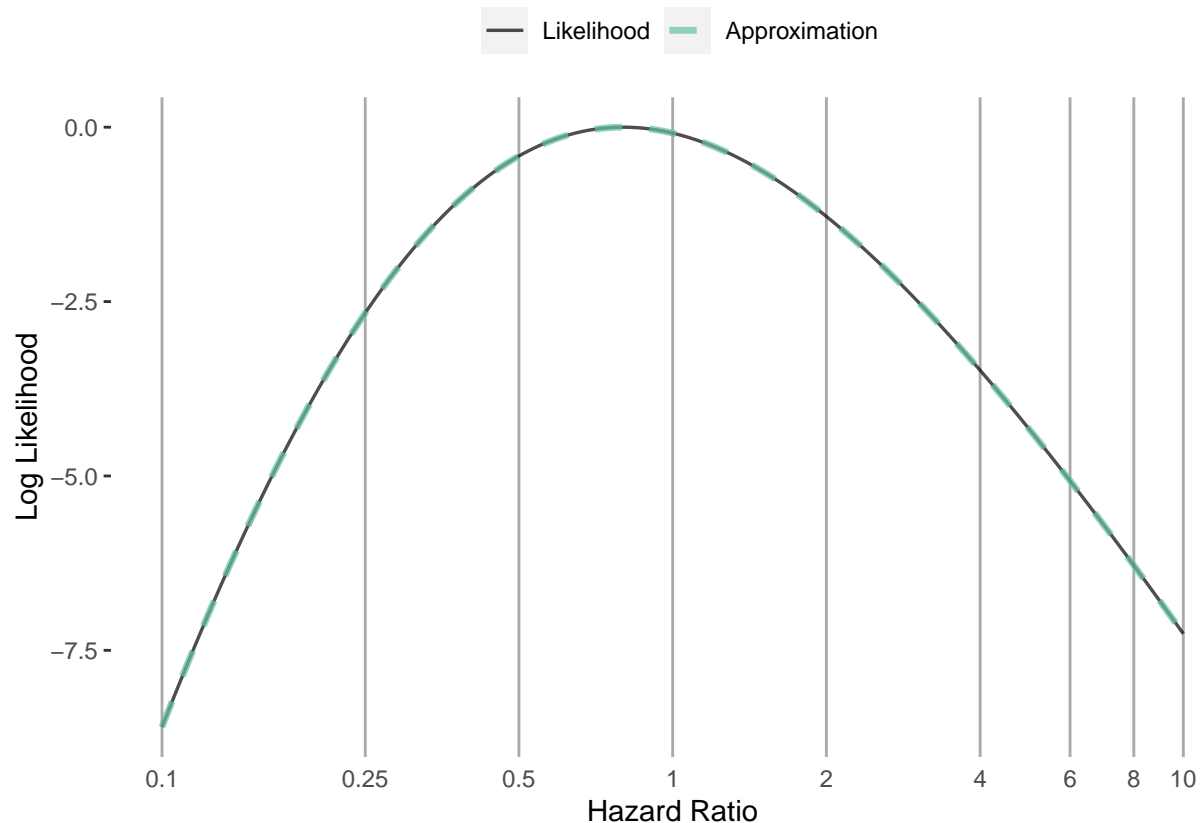
The EvidenceSynthesis package offers five types of approximation:

- “**normal**”: A normal approximation of the likelihood. This is the traditional choice for meta-analysis, but may not be appropriate when sample sizes are small. This function has two parameters ( $\mu$ , and  $\sigma$ ).
- “**skew normal**”: Uses the skew normal distribution to approximate the likelihood. This function has three parameters ( $\mu$ ,  $\sigma$ , and  $\alpha$ ).
- “**custom**”: A custom parametric function designed to approximate a Cox likelihood function. This function has three parameters ( $\mu$ ,  $\sigma$ , and  $\gamma$ ).
- “**grid**”: Records the log likelihood at various pre-defined grid points. This function has as many parameters as there are grid points, which by default is 991.
- “**adaptive grid**”: Records the log likelihood at grid points that are spaced to most efficiently capture the curvature.

In case we’re interested, we can see how closely our fitted function approximates the likelihood:

```
plotLikelihoodFit(
  approximation = approximation,
  cyclopsFit = cyclopsFit,
  parameter = "x"
)
```

```
## Detected data following adaptive grid distribution
```



### 3.1 Generating approximations at all sites

For this example we will create the approximations for all sites in one short script. In reality, each site will have to execute the code described above.

```
fitModelInDatabase <- function(population) {
  cyclopsData <- createCyclopsData(Surv(time, y) ~ x + strata(stratumId),
    data = population,
    modelType = "cox"
  )
  cyclopsFit <- fitCyclopsModel(cyclopsData)
  approximation <- approximateLikelihood(cyclopsFit,
    parameter = "x",
    approximation = "adaptive grid"
  )
  return(approximation)
}
approximations <- lapply(populations, fitModelInDatabase)
```

Here, for each population we fit the model, and create the approximation. The resulting object is a list of approximations, one for each site.

## 4 Combining evidence across sites

Assuming we have gathered the approximations from all participating sites, we can now produce a single estimate of the effect size. The `EvidenceSynthesis` package implements two different approaches to achieve this: assuming fixed-effects, or using a Bayesian model for random-effects.

### 4.1 Fixed-effects model.

A fixed-effects model assumes the true effect size is identical at each site. This assumption is reasonable if the sites are highly homogeneous, and have recruited very similar individuals. We use the `computeFixedEffectMetaAnalysis()` function:

```
estimate <- computeFixedEffectMetaAnalysis(approximations)
estimate
```

```
##          rr          lb          ub      logRr      seLogRr
## 1 2.02095 1.088238 4.117701 0.7035677 0.3394794
```

### 4.2 Bayesian random-effects model.

Alternatively, we can use a random-effects model, assuming that the effect sizes at each site might be slightly different, but are all drawn from the same distribution of effect sizes. We assume that distribution is a normal distribution with mean  $\mu$  and standard deviation  $\tau$ . Because such a model tends to be unstable when sample sizes are small, we treat this as a Bayesian problem, and use Markov chain Monte Carlo sampling to sample from the posterior distribution.

We can use the `computeBayesianMetaAnalysis()` function to combine the approximations into a single estimate:

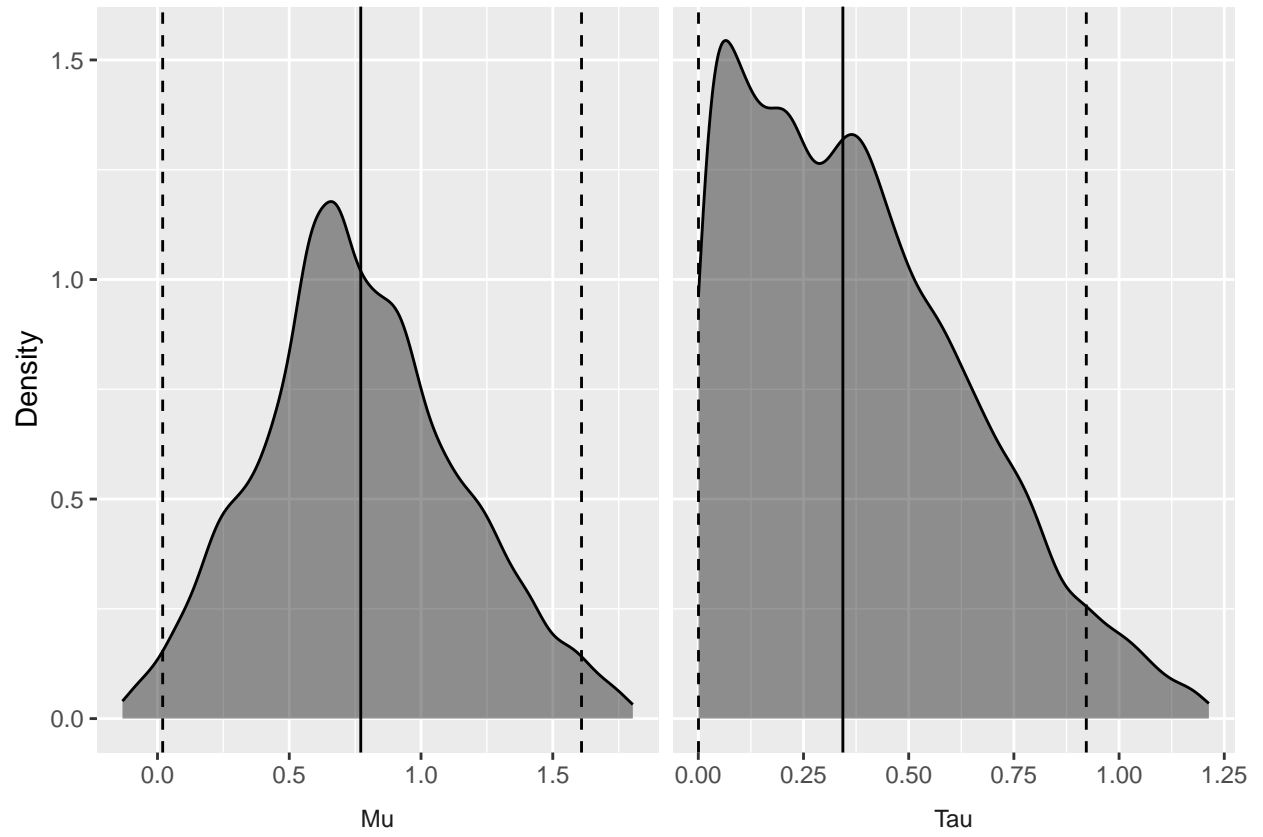
```
estimate <- computeBayesianMetaAnalysis(approximations)
exp(estimate[1:3])
```

```
##          mu      mu95Lb      mu95Ub
## 1 2.162737 1.019833 4.998508
```

We output the point estimate and 95% credible interval of our main parameter of interest  $\mu$ , and exponentiate these to convert to the hazard ratio scale.

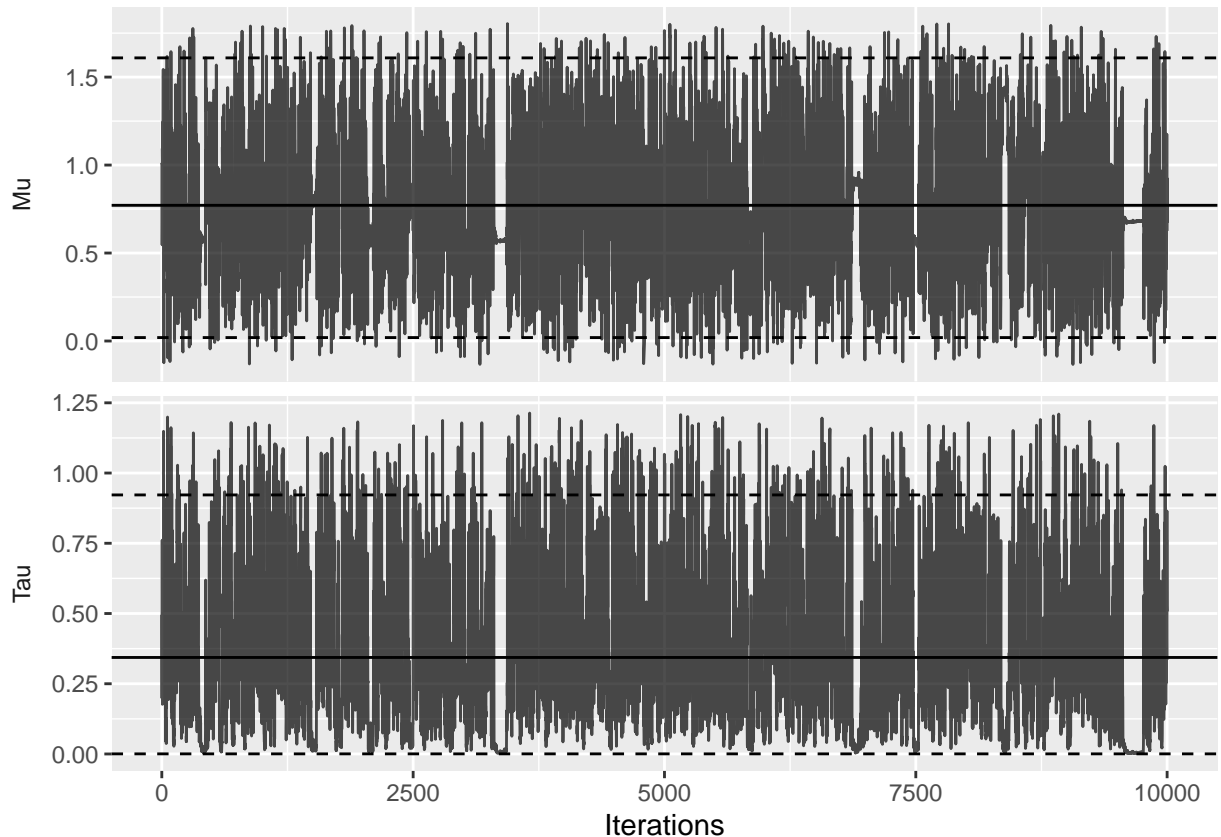
We can also view the full posterior distribution:

```
plotPosterior(estimate)
```



And the trace of the MCMC:

```
plotMcmcTrace(estimate)
```



### 4.3 Choice of prior

The `computeBayesianMetaAnalysis` uses a normal and half-normal prior for the  $\mu$  and  $\tau$  parameters, respectively. By default, the standard deviations are set to 2 for  $\mu$  and 0.5 for  $\tau$ . A standard deviation of 2 on the  $\mu$  parameter expresses the belief of a 95% probability that the true value of  $\mu$  is between -3.92 and 3.92, corresponding to hazard ratios from 0.02 to 50.40.

With less data, the choice of prior becomes more important. In a small-sample scenario, we may for example choose a stronger prior on  $\tau$  if we have reasons to believe between-site heterogeneity of the effect size will be small:

```
estimate2 <- computeBayesianMetaAnalysis(approximations, priorSd = c(2, 0.1))
exp(estimate2[1:3])
```

```
##          mu  mu95Lb  mu95Ub
## 1 2.09469 1.053163 3.905699
```

Here we still use a prior with a standard deviation of 2 on  $\mu$ , but for  $\tau$  we specify a prior with a standard deviation of 0.1 instead of 0.5. As can be seen by the narrow credible interval, this stronger prior on  $\tau$  leads to less uncertainty around  $\mu$ .

## 5 Forest plot

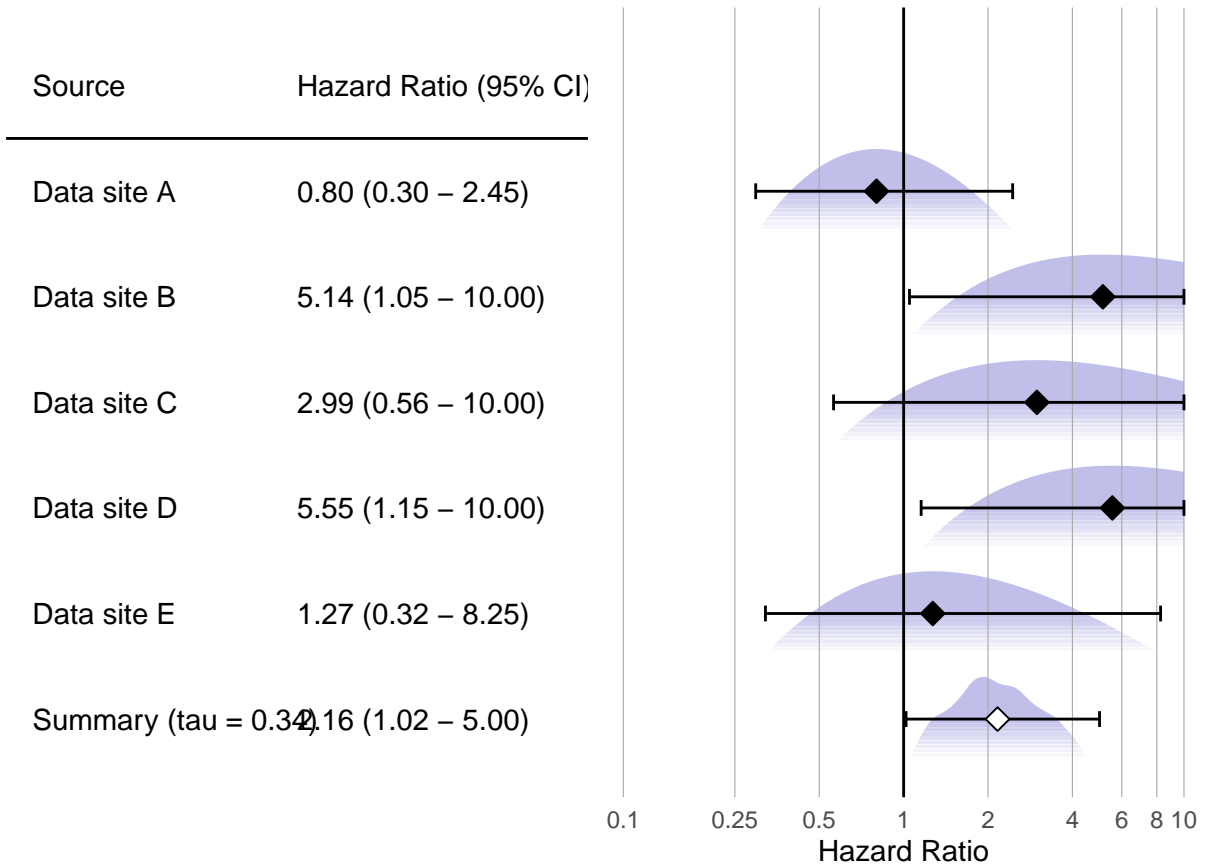
We can plot the results using a standard forest plot:

```
# Make up some data site labels:
labels <- paste("Data site", LETTERS[1:length(populations)])
```

```

plotMetaAnalysisForest(
  data = approximations,
  labels = labels,
  estimate = estimate,
  xLabel = "Hazard Ratio",
  showLikelihood = TRUE
)

```



The plot also shows the (approximated) partial likelihood curves of each site and the posterior distribution of the meta-analysis.