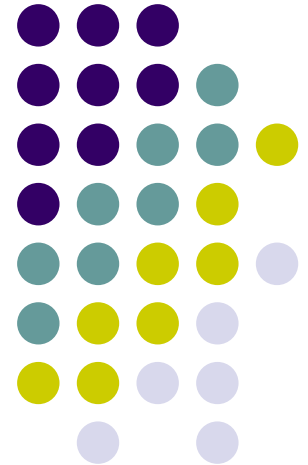


Mapping the DAIS Concepts

Simon Laws (IBM)

Sastry Malladi (ORACLE)

Savas Parastatidis (Univ. of Newcastle)





Approach (issues considered)

1. Consistent interfaces hiding implementation details (message interactions)
2. Common description of the interactions with the data
3. Access to the same data through different interactions
 - PortTypes composed within a single service
 - PortTypes implemented across services
4. Naming of data
5. Generation/creation of data through interactions
6. Access to metadata
7. Stateful interaction with the service
8. Stateful interaction with the identifiable data
9. Stateful interaction between a number of services
10. Registries



Approach (issues not considered yet)

- Orthogonal functionality (security, policies, transactions, coordination, reliable messaging, orchestration, etc.)
- Notification
- Representation of data outside the boundaries of services (format)
- Transfer of data outside the boundaries of services
- 3rd party delivery

Scenario Coverage



	S1	S2	S3	S4	S5
	Stateful interactions with resources	Sessions	Resource discovery	Meta Data	Third Party References
1	X				
2	X				
3	X				
4	X		X		X
5	X				
6				X	
7		X			
8	X				X
9	X				
10			X		

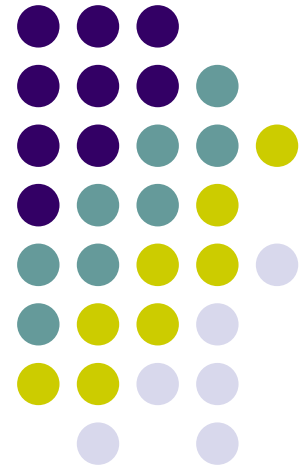


Context?

- Context – any information required by a web service in order to perform an operation, e.g. the formal parameters, information passed in the SOAP header, information appended to the URL of the service, information held by the service and not passed in.
- “what” – Context which identifies a data resource
- “how” – Context that described how operations should be performed against a data resource

Scenario 1

Stateful interactions with
resources



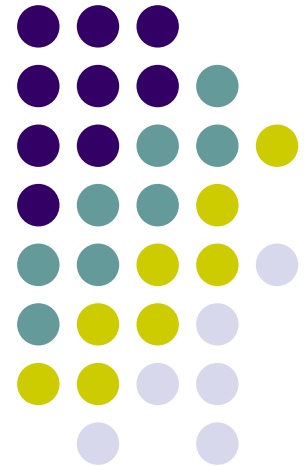


Approaches We Considered

1. Explicit contextualisation
2. Implicit contextualisation, e.g. WS-Context, WS-Coordination
3. Combining implicit and explicit contextualisation
4. Implicit contextualisation using WSRF

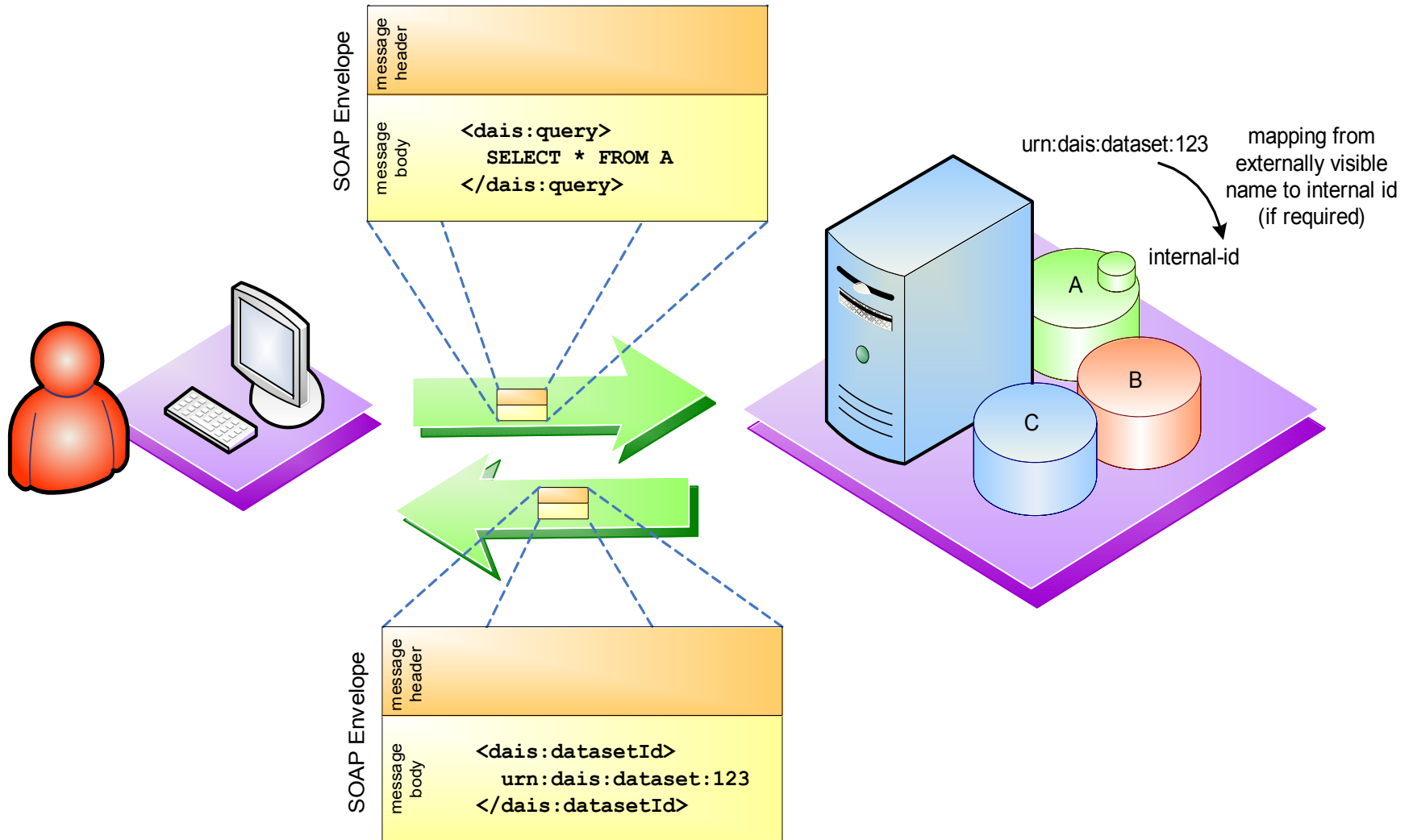
Scenario 1 Approach 1

Explicit contextualisation

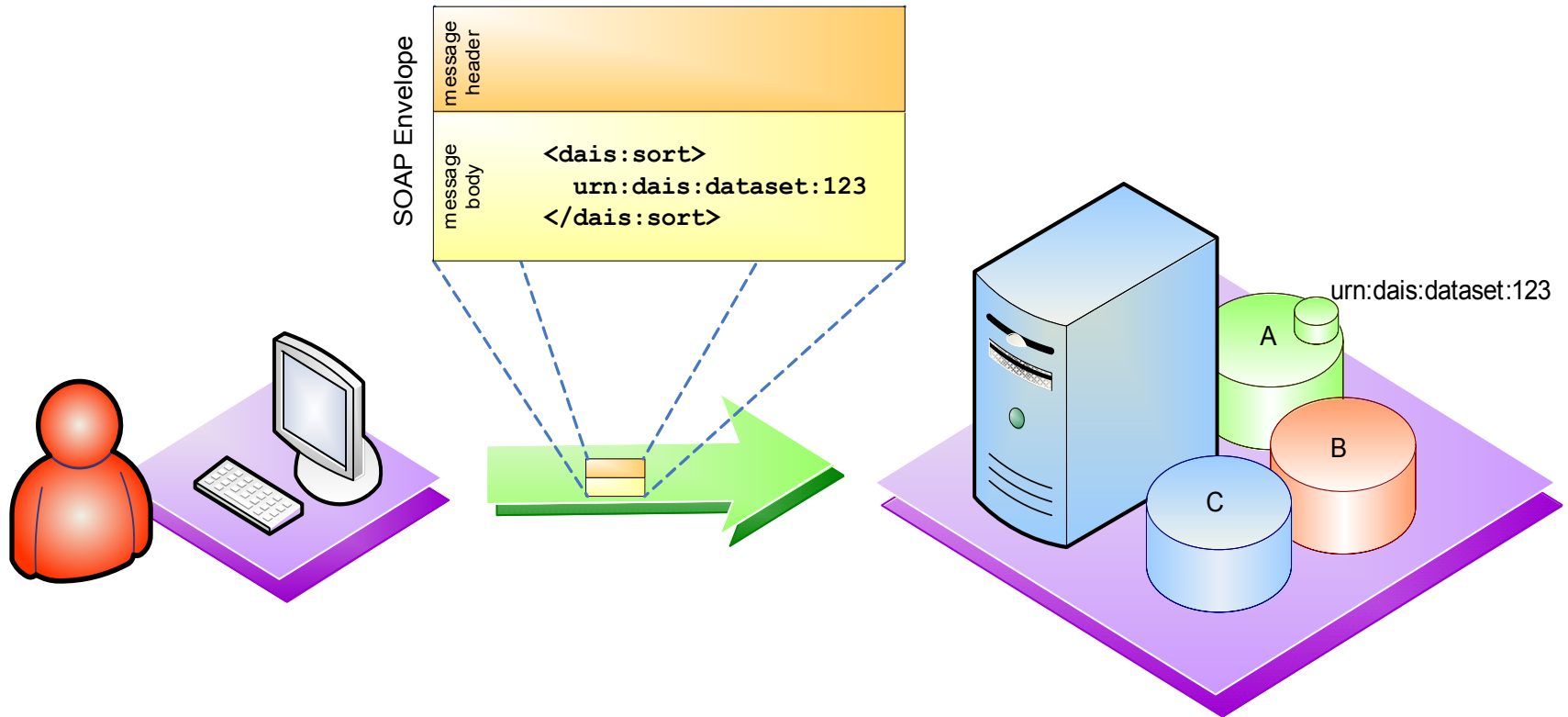




Explicit contextualisation

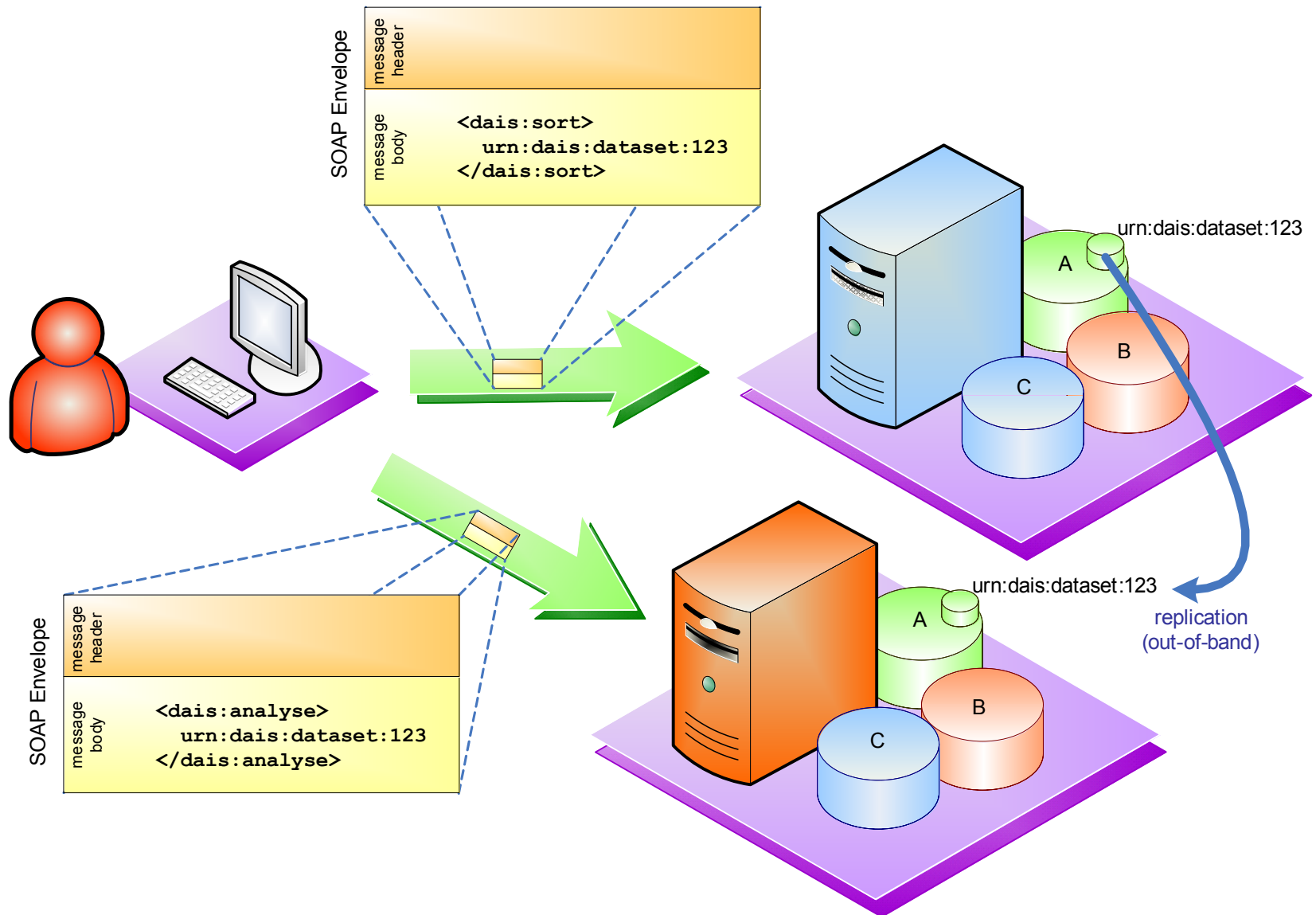


Explicit contextualisation



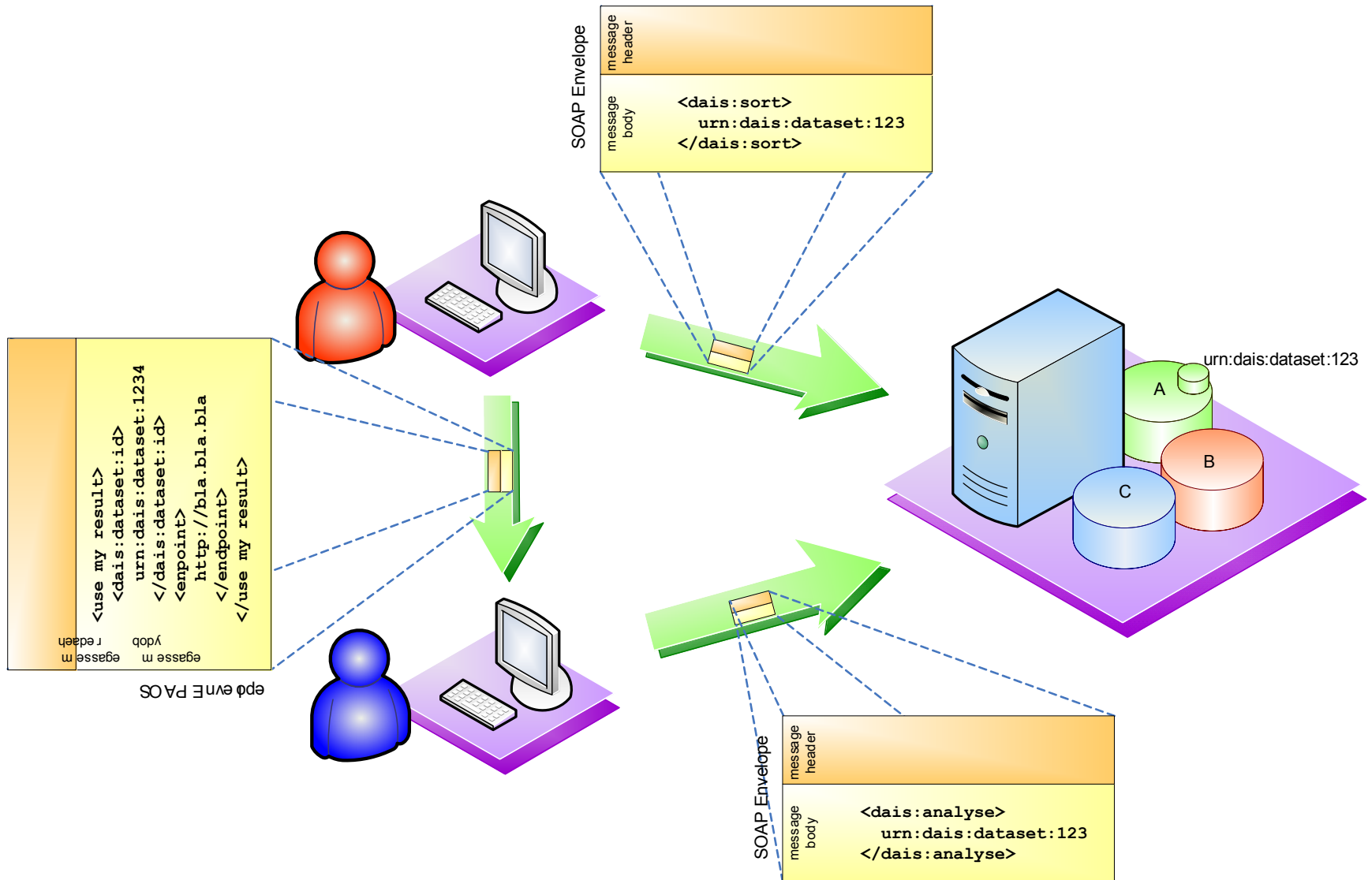


Explicit contextualisation



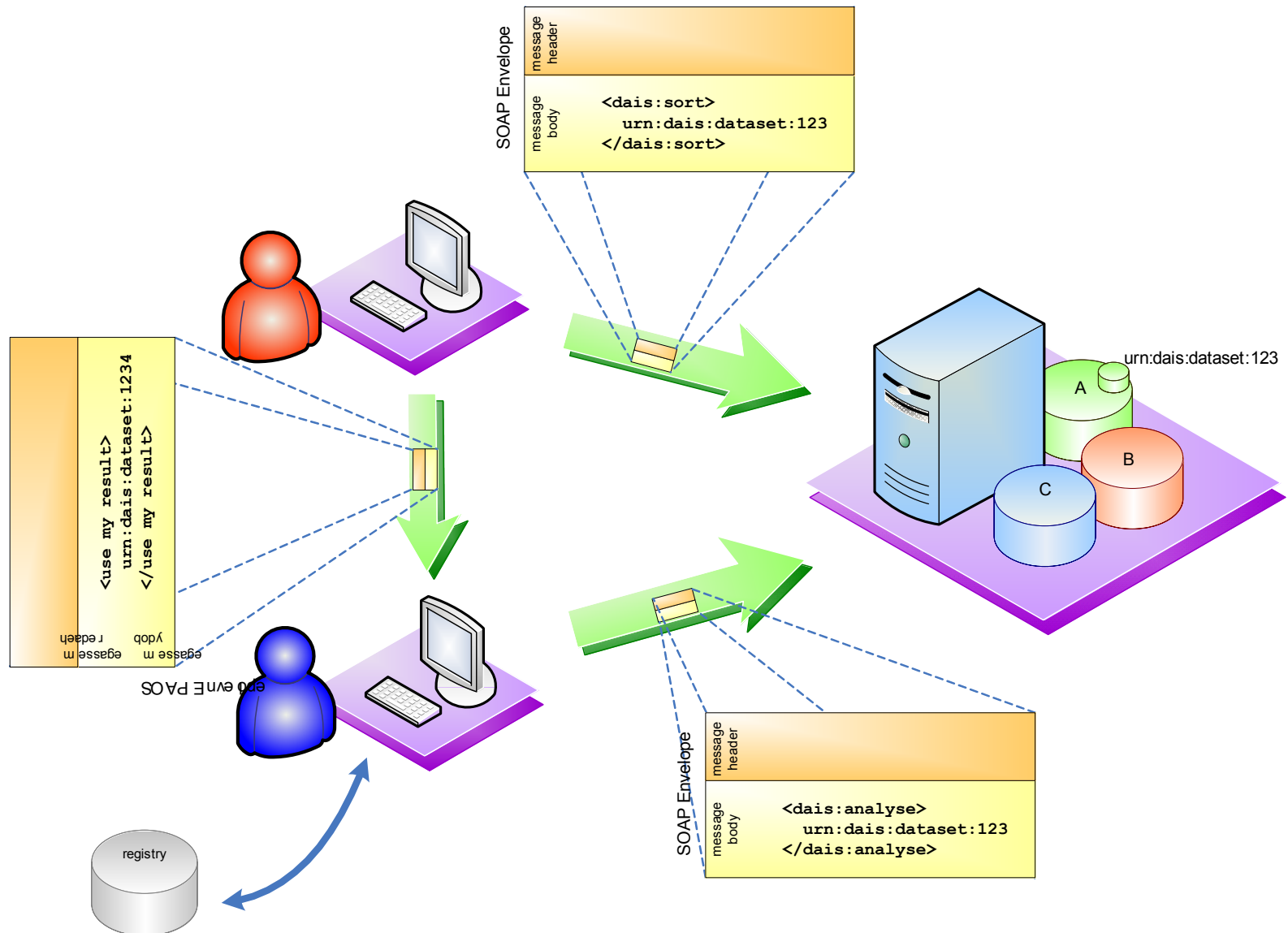


Explicit contextualisation



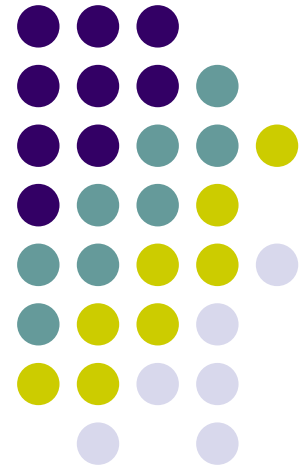


Explicit contextualisation

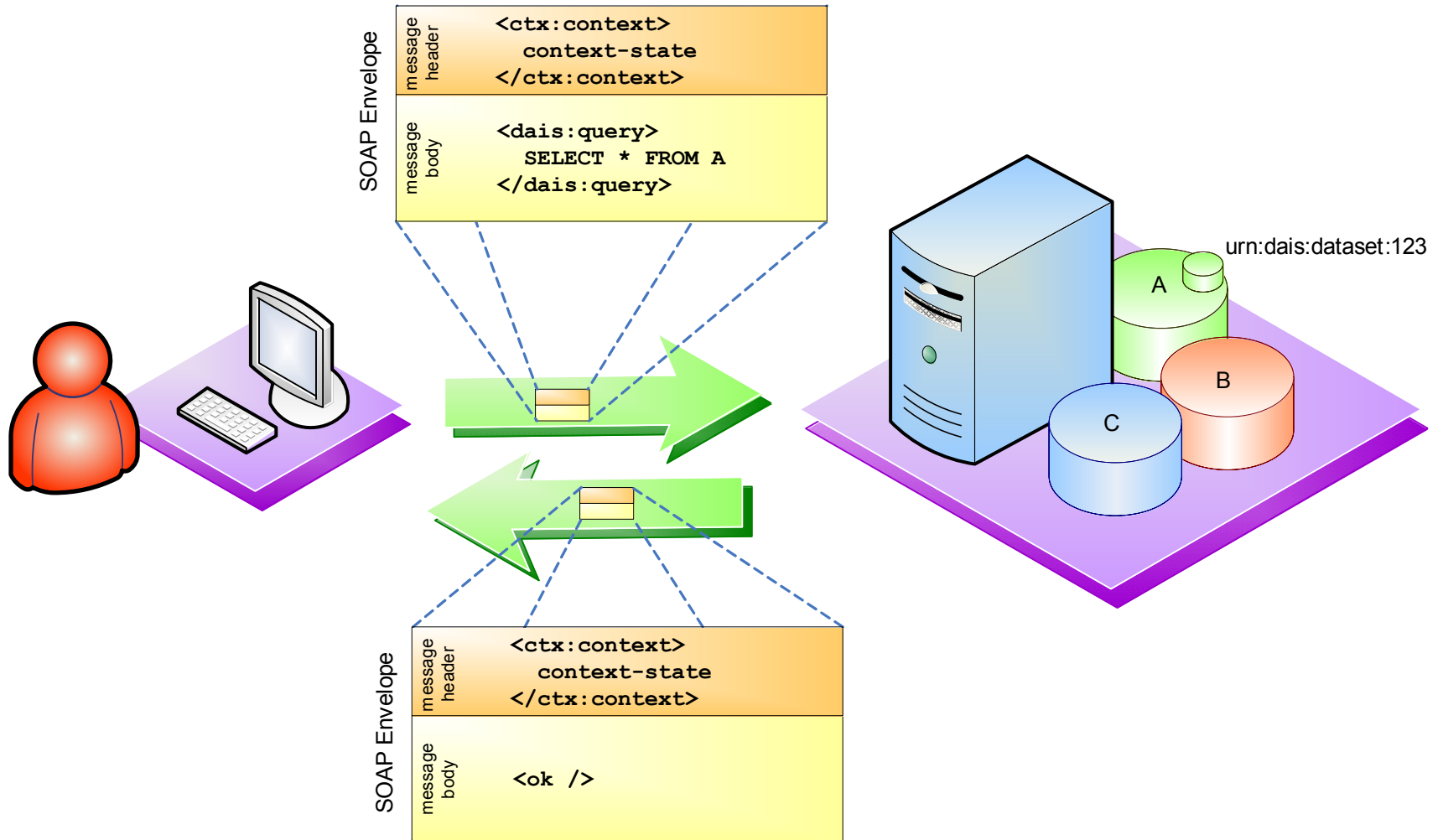


Scenario 1 Approach 2

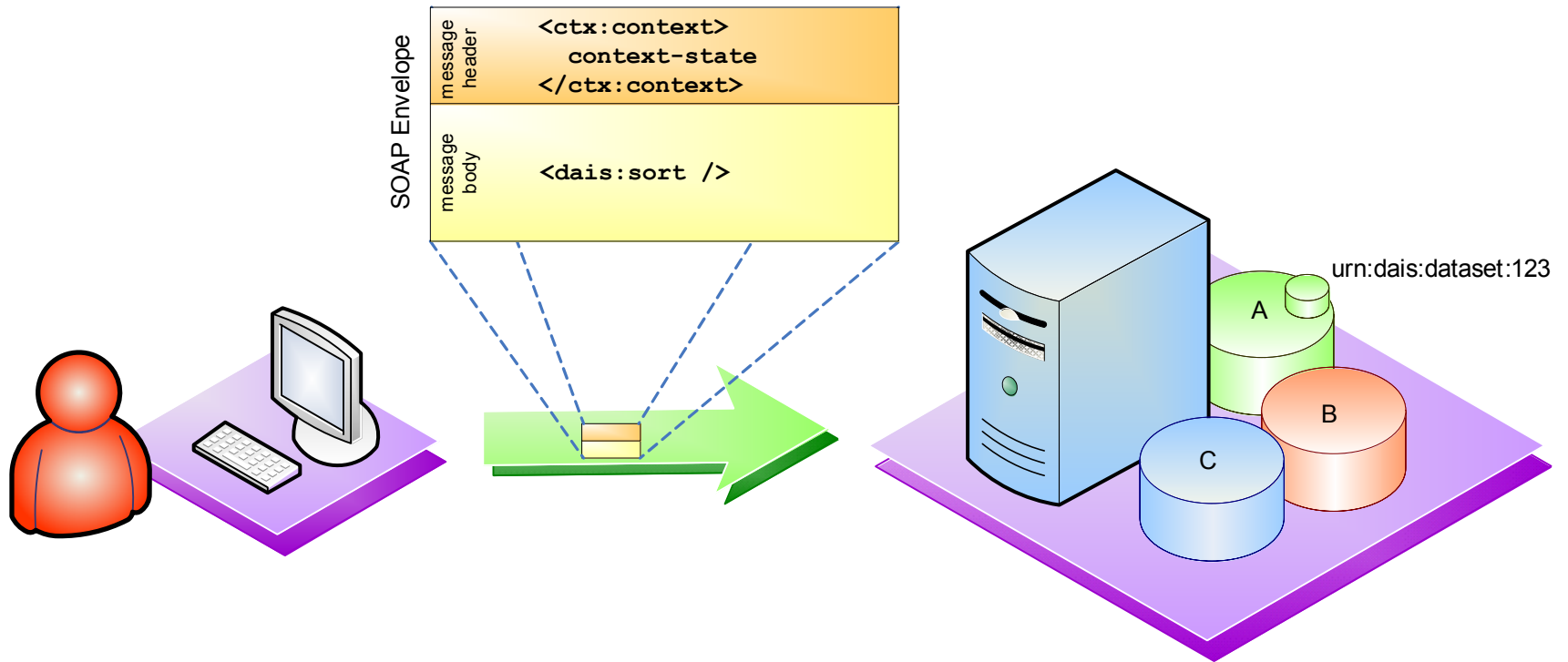
Implicit contextualisation



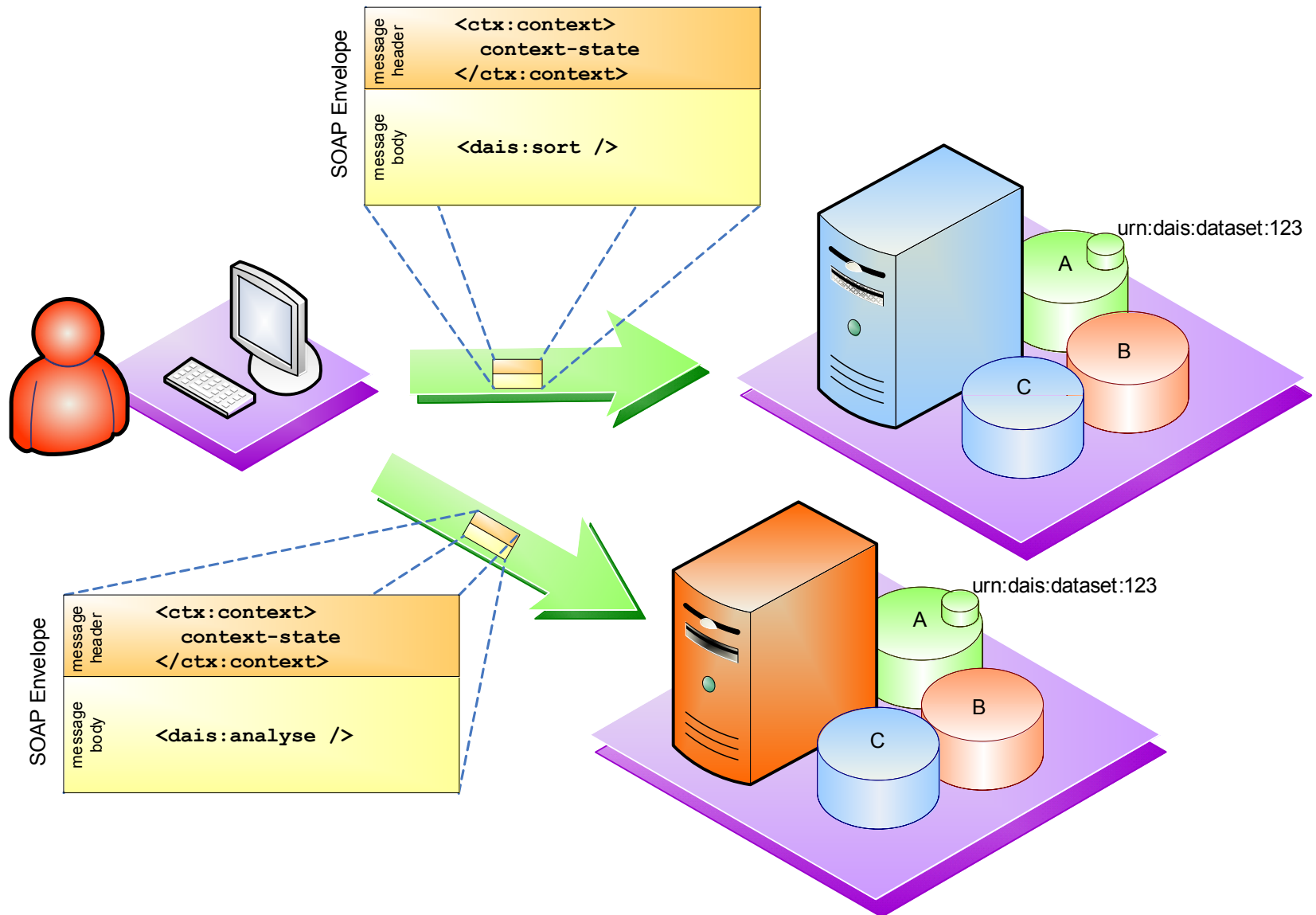
Implicit contextualisation



Implicit contextualisation

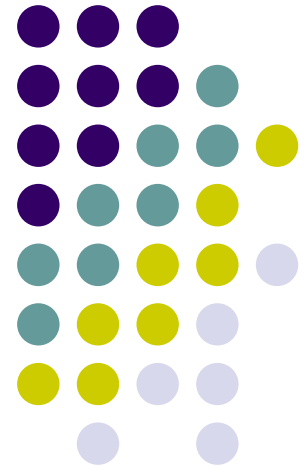


Implicit contextualisation



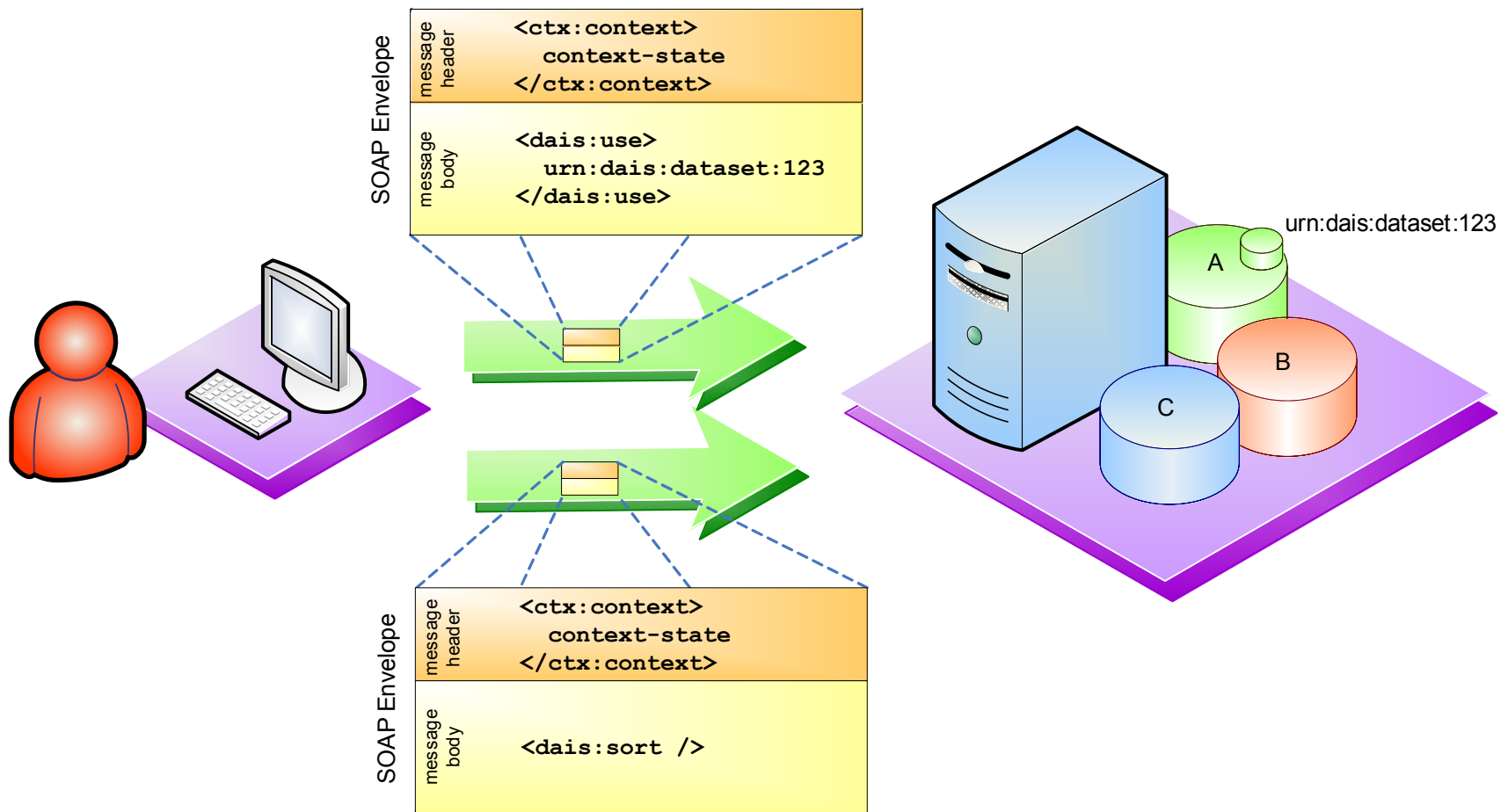
Scenario 1

Combining explicit and implicit
contextualisation



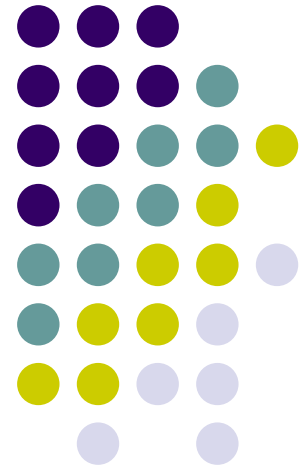


Combining explicit and implicit contextualisation



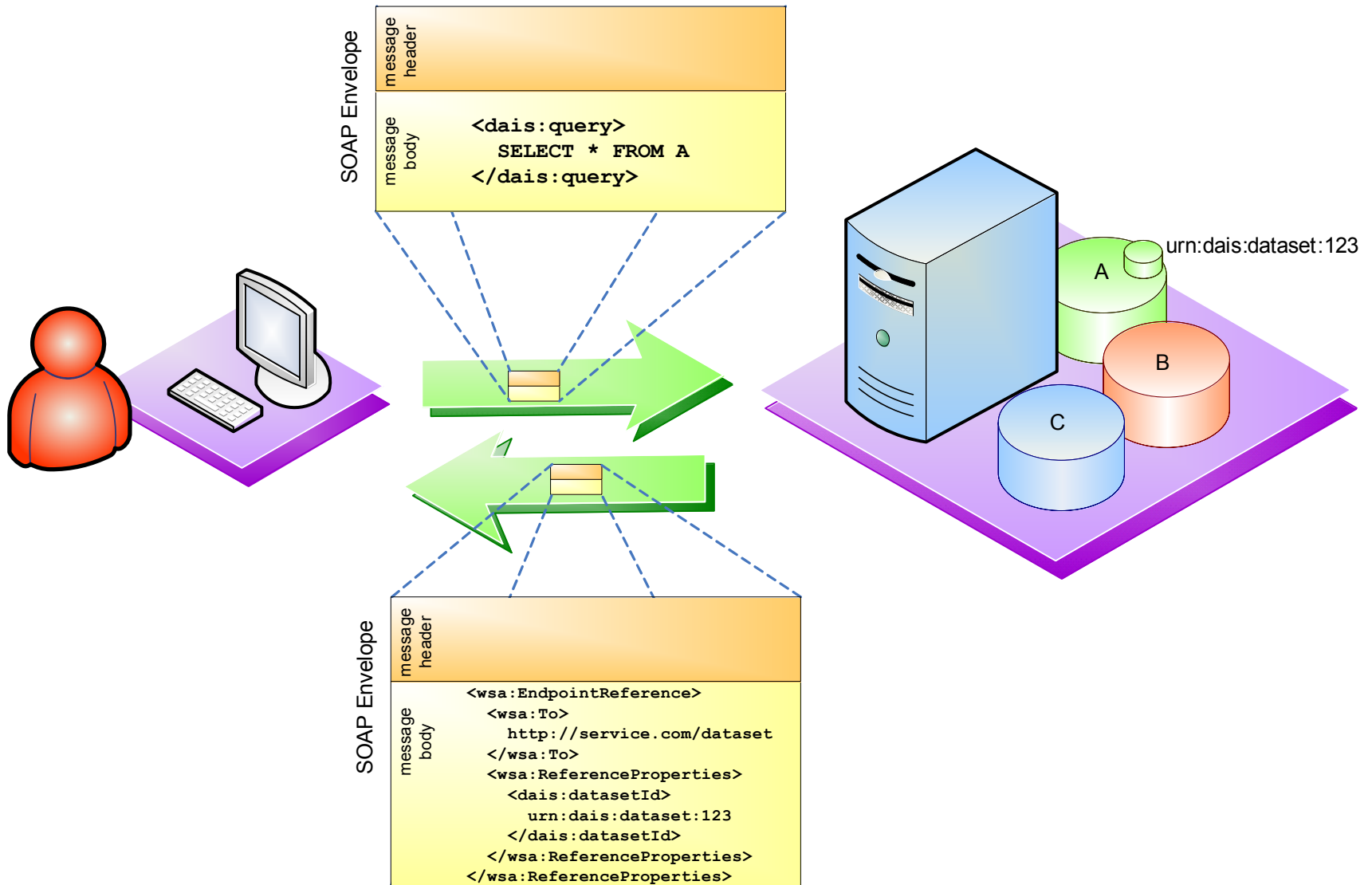
Scenario 1

Implicit contextualisation using
WS-RF

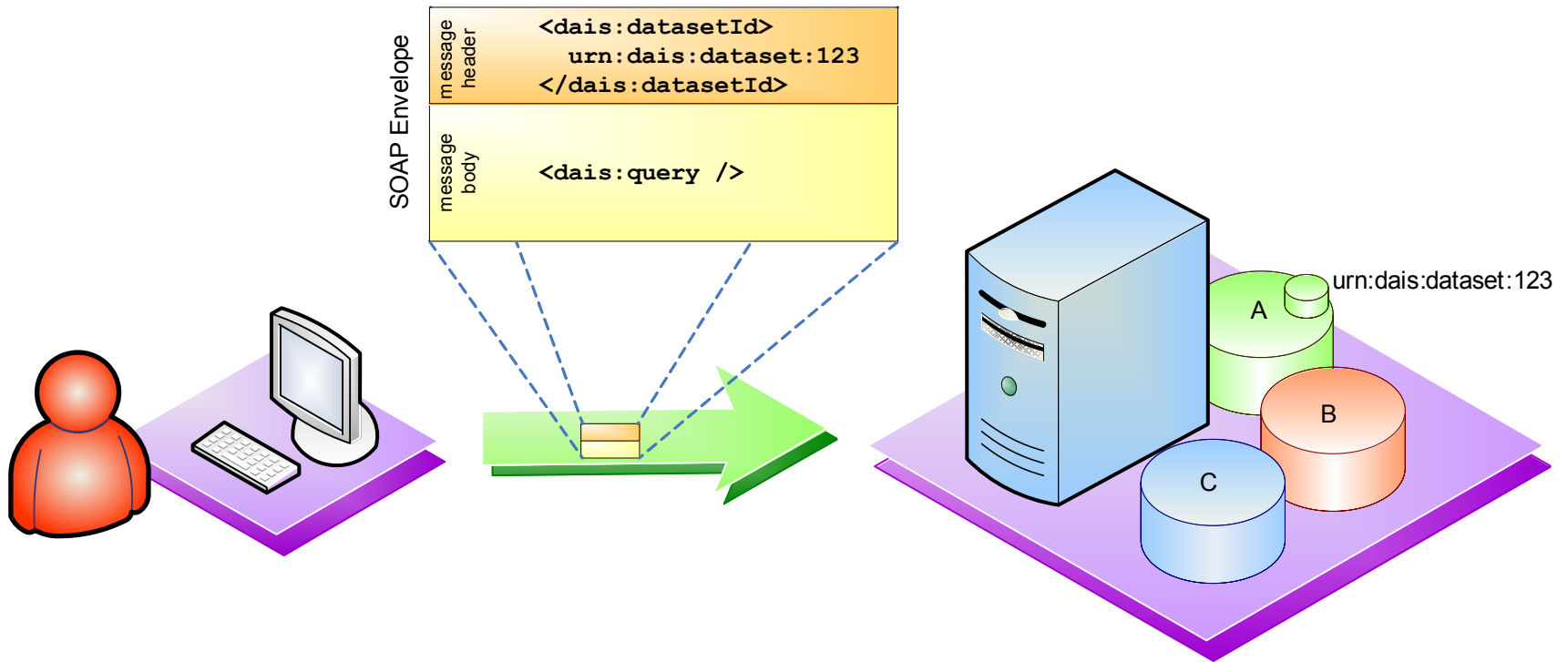




Implicit contextualisation using WS-RF

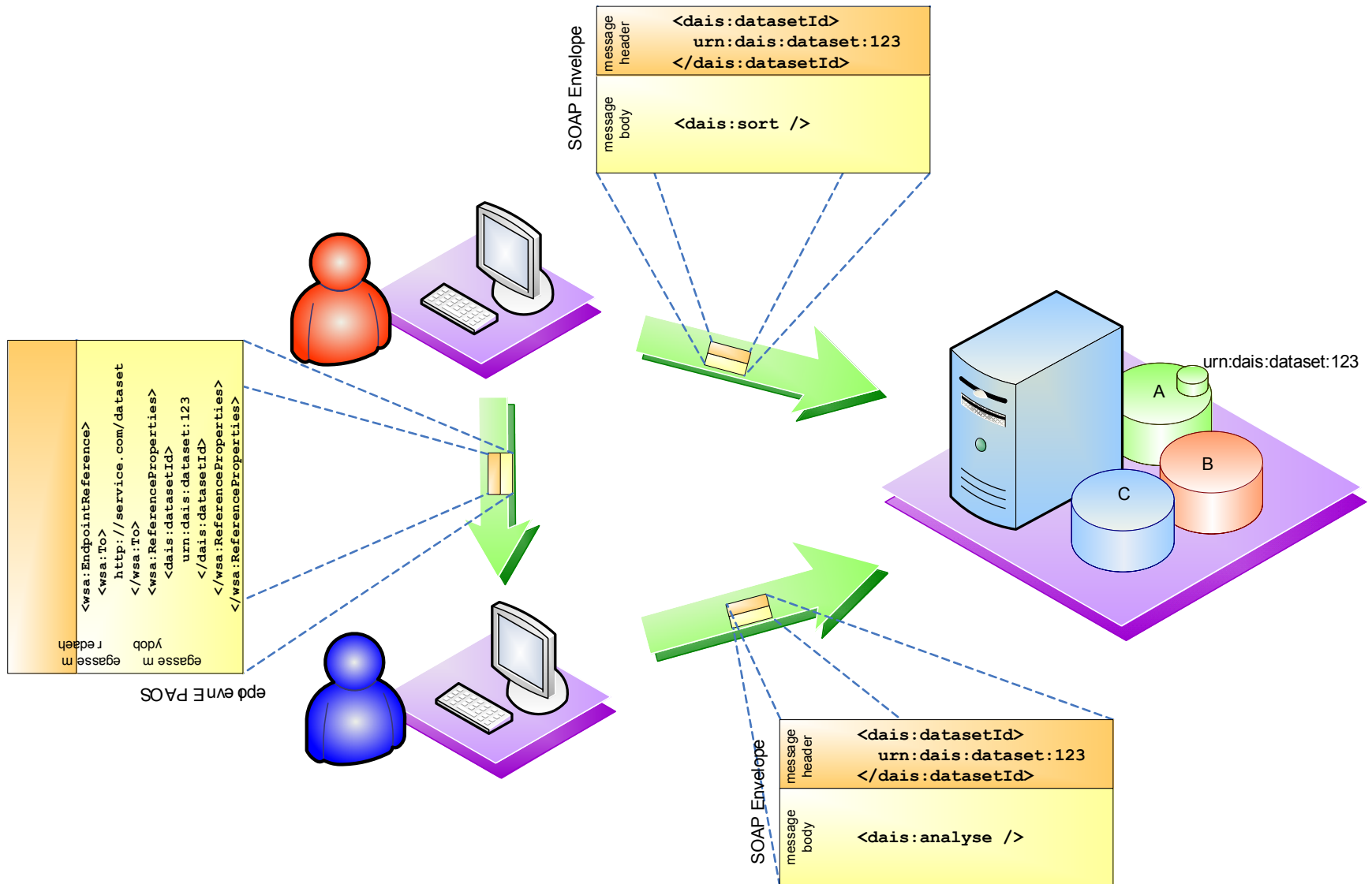


Implicit contextualisation using WS-RF



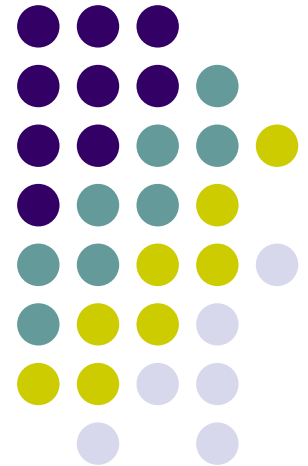


Implicit contextualisation using WS-RF



Scenario 1

Discussion

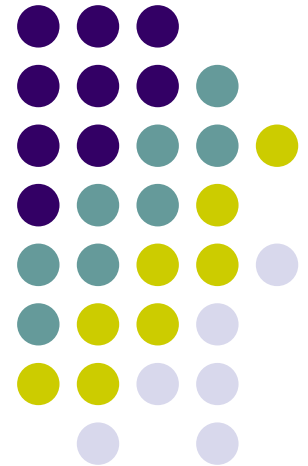




Discussion

- Explicit contextualisation
 - Can be used now
 - Identity remains at application level, consumer is aware
- Implicit contextualisation, e.g. WS-Context, WS-Coordination
 - Identity of resource is responsibility of service, consumer is unaware
- Combining implicit and explicit contextualisation
 - Demonstrates a consumer moving from explicit to implicit operation
- Implicit contextualisation using WSRF
 - Identity of resource is responsibility of service, consumer is unaware

What's Next





What's next

- Objective: Distribute the “Scenarios for Mapping DAIS Concepts” document
 - Use input from discussion to revise/evolve the document
 - Submit it as an GGF information document for GGF-11
 - Expect revisions of the document as we follow the ongoing discussions on infrastructure(s)
- Ultimate goal: Inform the DAIS WG about the different possibilities for mapping DAIS concepts to underlying infrastructure