

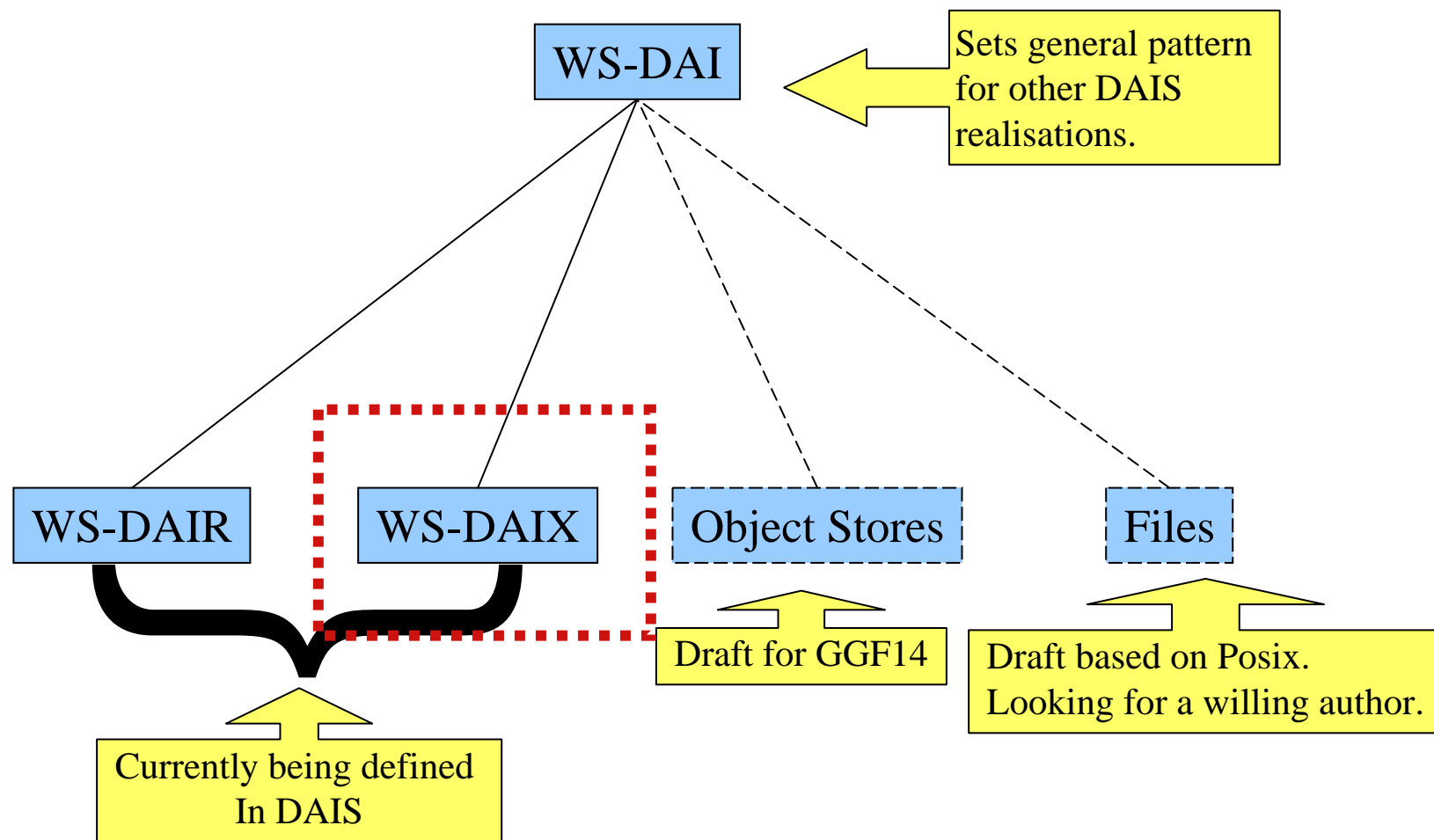


WS-DAIX XML Realization

Amy Krause
GGF13, Seoul, South Korea
15 March 2005

Amy Krause
EPCC
a.krause@epcc.ed.ac.uk

- Background
- Related Standard
- Changes from GGF12
- Outstanding Issues
- Future Plans



- XMLCollection

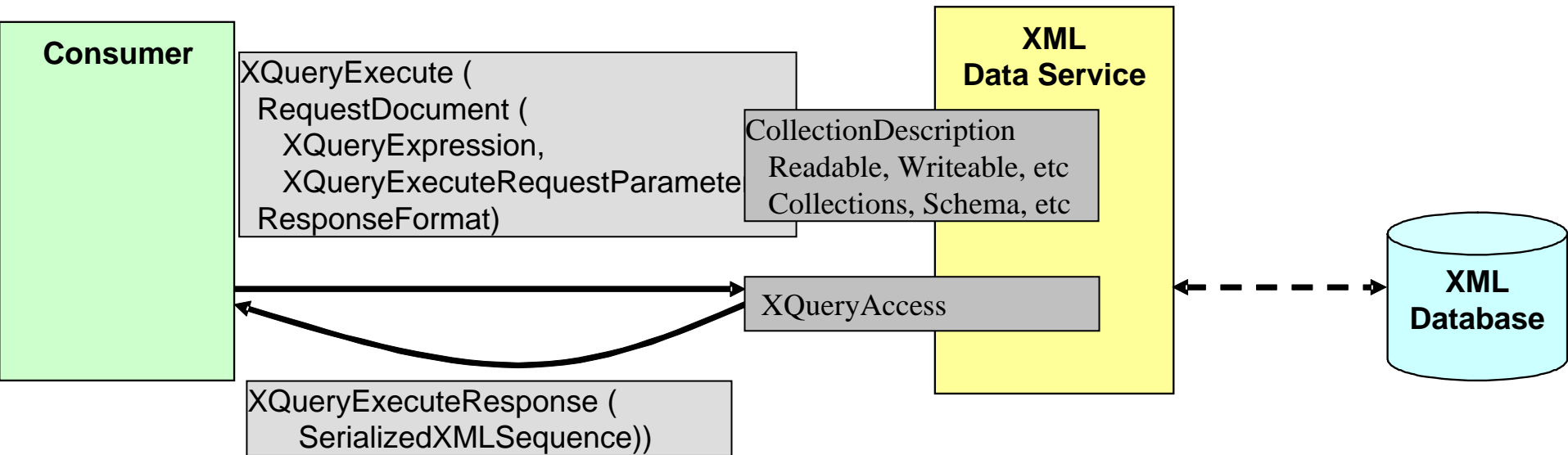
- AddDocuments
- RemoveDocuments
- CreateSubCollection
- RemoveSubCollection
- BulkLoad
- *AddSchema*
- *RemoveSchema*

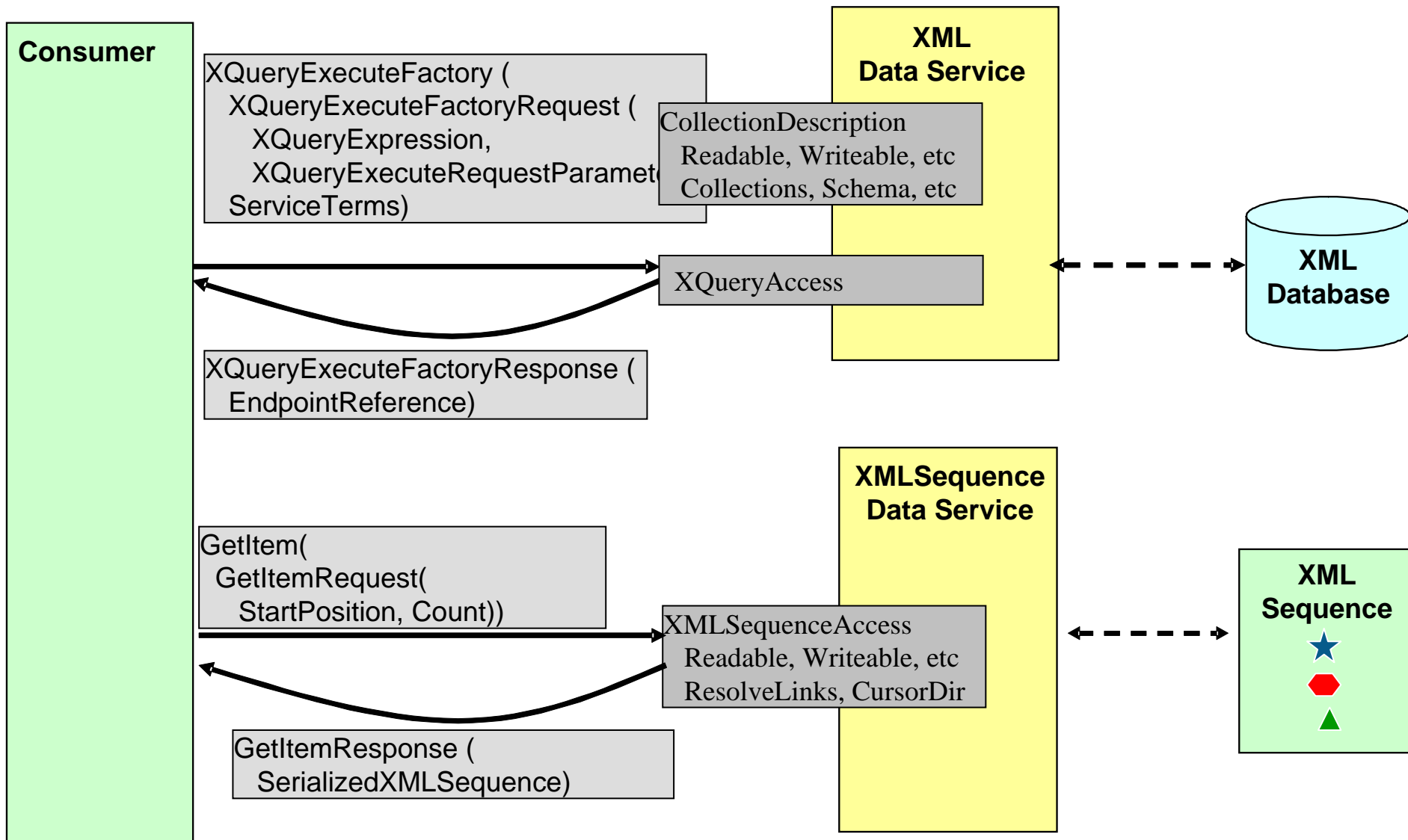
- XMLCollectionSelectionFactory
- XMLDocumentSelectionFactory

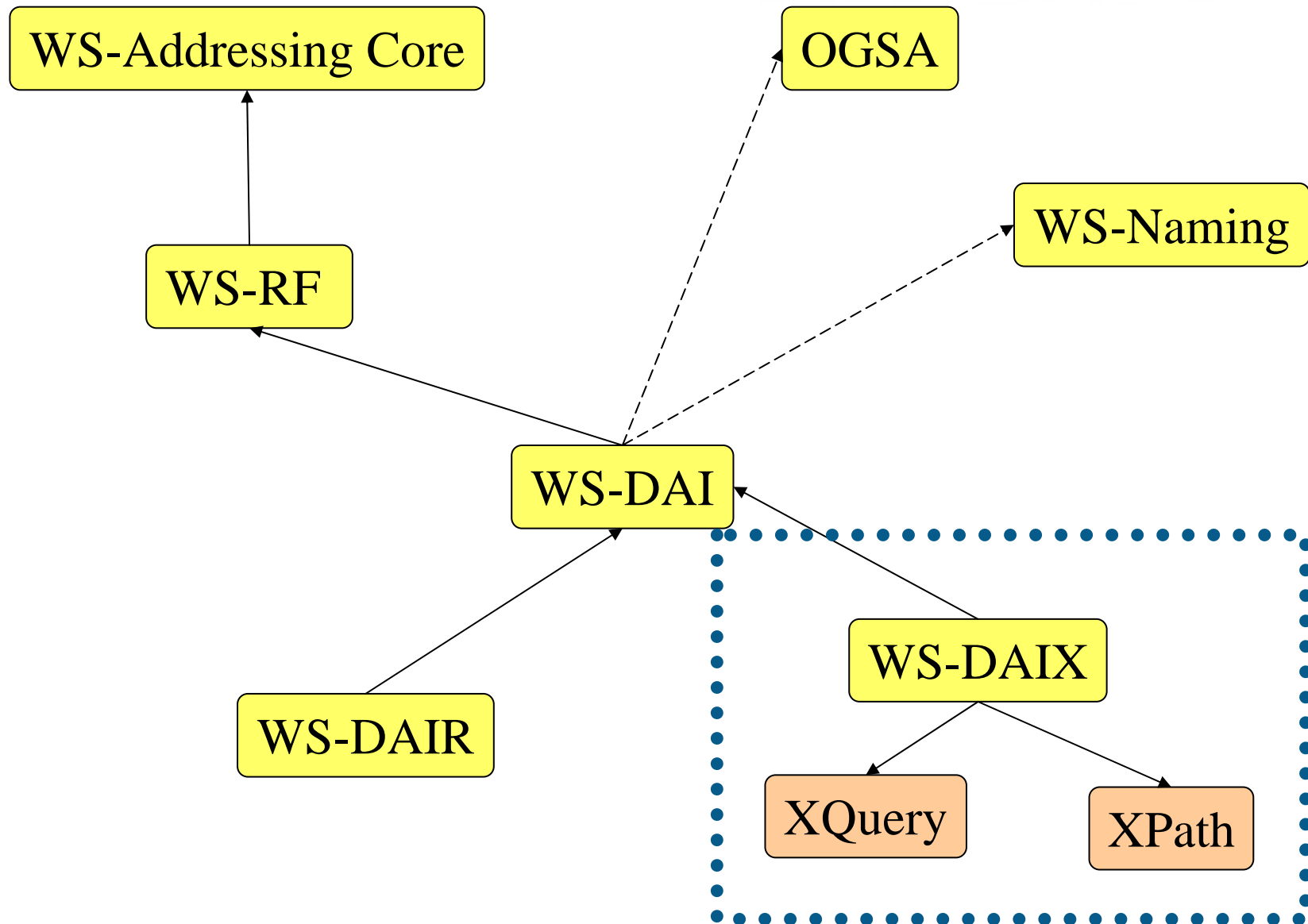
- **XQuery**
 - XQueryExecute
 - XQueryExecuteFactory
- **XPath**
 - XPathQuery
 - XPathQueryFactory
- **XMLSequence**
 - XMLSequenceAccess
- **XUpdate**
 - *XUpdate*

- **XMLCollection**
 - Collections
 - Documents
 - NumberOfDocuments
 - Schemas
- **XMLDocument**
 - Schema
 - DocumentName
 - Size
- **XPathAccess**
 - XPathVersion
 - RequestSchema
- **XQueryAccess**
 - XQueryVersion
 - RequestSchema
 - XMLSerializationMethod
 - XMLSerializationProperties
- **XMLSequenceAccess**
 - ResolveLinks
 - NumberOfItems
 - XMLSerializationMethod
 - XMLSerializationProperties

Additional properties are defined in WS-DAI







- XQuery 1.0
 - Working drafts from 11 February 2005
 - XQuery Update Facility Requirements: First draft released on 11 February 2005
- XPath 2.0
 - Working draft released on 11 February 2005
- XQJ (JSR 225): XQuery API for Java
 - Early draft being reviewed by JCP (deadline: 9 July 2004)

- Refactoring of document structure
- Fixed typos and tightened up the language
- More diagrams!
- Clarifications

- Create WSDL
- XMLCollectionAccess::AddSchema
 - Storing schemas with a collection of documents

- Prepare the specification for the final draft stage for GGF14
 - Process the grid forge issues
 - Adopt a solution that helps with WSRF and WSI compatibility
 - Create WSDL
 - Modify the specifications
 - Review the specifications
- Please do join in the DAIS activity
 - DAIS mailing list
 - DAIS phone calls
- Implementations