

Ontology Specification Introduction (Past GGF Meetings)

Access Services for RDF Data Resources

OGF IPR Policies Apply



- “I acknowledge that participation in this meeting is subject to the OGF Intellectual Property Policy.”
- Intellectual Property Notices Note Well: All statements related to the activities of the OGF and addressed to the OGF are subject to all provisions of Appendix B of GFD-C.1, which grants to the OGF and its participants certain licenses and rights in such statements. Such statements include verbal statements in OGF meetings, as well as written and electronic communications made at any time or place, which are addressed to:
 - the OGF plenary session,
 - any OGF working group or portion thereof,
 - the OGF Board of Directors, the GFSG, or any member thereof on behalf of the OGF,
 - the ADCOM, or any member thereof on behalf of the ADCOM,
 - any OGF mailing list, including any group list, or any other list functioning under OGF auspices,
 - the OGF Editor or the document authoring and review process
- Statements made outside of a OGF meeting, mailing list or other function, that are clearly not intended to be input to an OGF activity, group or function, are not subject to these provisions.
- Excerpt from Appendix B of GFD-C.1: “Where the OGF knows of rights, or claimed rights, the OGF secretariat shall attempt to obtain from the claimant of such rights, a written assurance that upon approval by the GFSG of the relevant OGF document(s), any party will be able to obtain the right to implement, use and distribute the technology or works when implementing, using or distributing technology based upon the specific specification(s) under openly specified, reasonable, non-discriminatory terms. The working group or research group proposing the use of the technology with respect to which the proprietary rights are claimed may assist the OGF secretariat in this effort. The results of this procedure shall not affect advancement of document, except that the GFSG may defer approval where a delay may facilitate the obtaining of such assurances. The results will, however, be recorded by the OGF Secretariat, and made available. The GFSG may also direct that a summary of the results be included in any GFD published containing the specification.”
- OGF Intellectual Property Policies are adapted from the IETF Intellectual Property Policies that support the Internet Standards Process.

Full Copyright Notice



Copyright (C) Open Grid Forum (2006). All Rights Reserved.

This document and translations of it may be copied and furnished to others, and derivative works that comment on or otherwise explain it or assist in its implementation may be prepared, copied, published and distributed, in whole or in part, without restriction of any kind, provided that the above copyright notice and this paragraph are included on all such copies and derivative works.

The limited permissions granted above are perpetual and will not be revoked by the OGF or its successors or assignees.

Operational Model

- Possible alternatives:
 - *Graph-oriented*
 - ***Object-oriented***
- Operation types:
 - *Creation/removal*
 - *Retrieval*
 - *Attachment/detachment*
- Side issues:
 - Inference aware vs inference unaware operations

Recalling the design criteria (II)

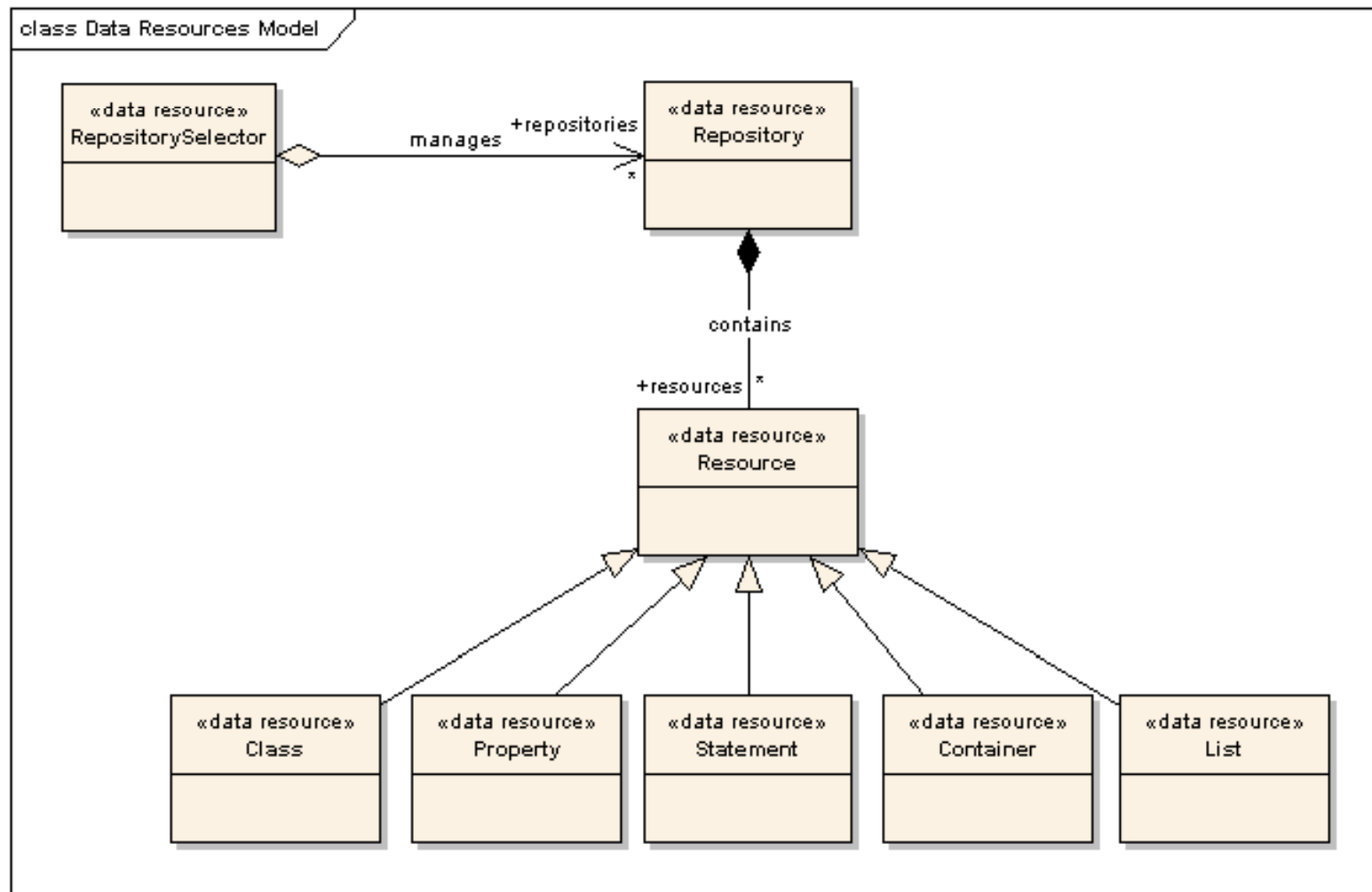
Interface organization



- *Two layers:*
 - *Bulk access*
 - *Specialized access*
- *Interface types:*
 - **Native interfaces:** mimic classes of the RDF(S) data model
 - **Utility interfaces:** provide additional functionalities that enhance usability
- *Message definition:*
 - **Direct data access:**
 - Retrieval of directly associated information
 - Creation of new data (including *attachments*)
 - Deletion of existing data (including *detachments*)
 - **Indirect data access**
 - Delegation of access to services that provide specialized access to a subset of associated information

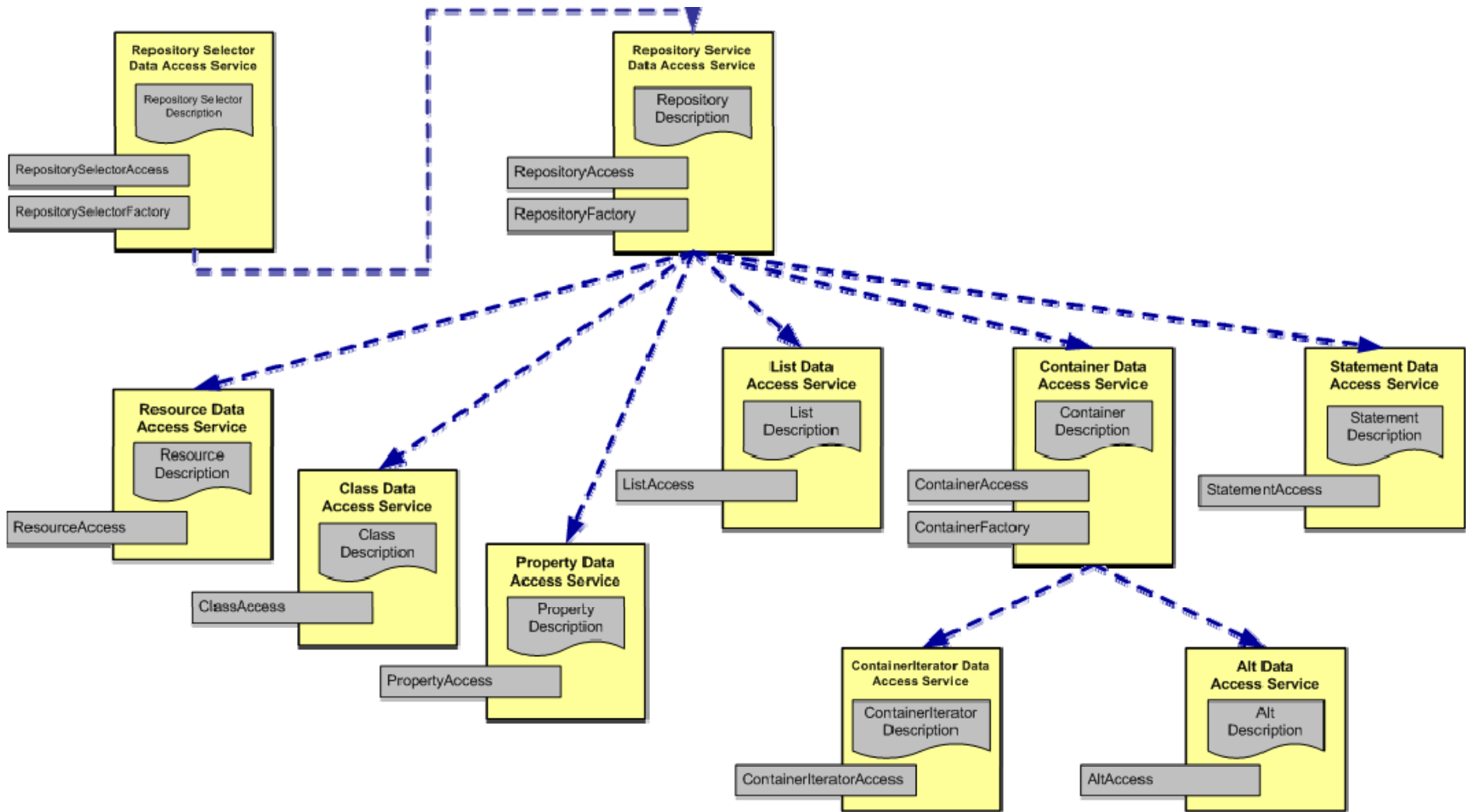
Current status (I)

Data resources



Current status (II)

Interface organization



Current status (III), Interfaces provided (I)

RepositorySelector



Definition

Imports	Types
↖ ..\resources\spec\wsdai_core_porttypes.wsdl	➡ http://eu.ist.ontogrid.org/namespaces/ontologyaccess/WS-DAIOnt-RDF(S)

Services	Bindings	Port Types	Messages
		<ul style="list-style-type: none">RepositorySelectorPT<ul style="list-style-type: none">AddRepositoryGetRepositoryContentsGetRepositoryListRemoveRepositoryRepositorySelectorFactoryPTCoreDataAccessPTCoreResourceListPT	<ul style="list-style-type: none">AddRepositoryRequestAddRepositoryResponseDataResourceUnavailableFaultDestroyDataResourceRequestDestroyDataResourceResponseGenericQueryRequestGenericQueryResponseGetDataResourcePropertyDocumentRequestGetDataResourcePropertyDocumentResponseGetRepositoryContentsRequestGetRepositoryContentsResponseGetRepositoryFactoryRequestGetRepositoryFactoryResponseGetRepositoryListRequestGetRepositoryListResponse

Current status (III), Interfaces provided (II)

RepositorySelectorFactory



Definition

Imports	Types
↶ ..\resources\spec\wsdai_core_porttypes.wsdl	⇒ http://eu.ist.ontogrid.org/namespaces/ontologyaccess/WS-DAIOnt-RDF(S)

Services	Bindings	Port Types	Messages
		<ul style="list-style-type: none">RepositorySelectorPTRepositorySelectorFactoryPTGetRepositoryFactoryCoreDataAccessPTCoreResourceListPT	<ul style="list-style-type: none">AddRepositoryRequestAddRepositoryResponseDataResourceUnavailableFaultDestroyDataResourceRequestDestroyDataResourceResponseGenericQueryRequestGenericQueryResponseGetDataResourcePropertyDocumentRequestGetDataResourcePropertyDocumentResponseGetRepositoryContentsRequestGetRepositoryContentsResponseGetRepositoryFactoryRequestGetRepositoryFactoryResponseGetRepositoryListRequestGetRepositoryListResponse

Current status (III), Interfaces provided (III) *Repository*



Definition

Imports
← ..\resources\spec\wsdai_core_porttypes.wsdl

Types
→ [http://eu.ist.ontogrid.org/namespaces/ontologyaccess/WS-DAIOnt-RDF\(S\)](http://eu.ist.ontogrid.org/namespaces/ontologyaccess/WS-DAIOnt-RDF(S))

Services	Bindings	Port Types	Messages
		<ul style="list-style-type: none">RepositoryPT<ul style="list-style-type: none">AddResourceGetRepositoryIdGetResourcesRemoveResourceByURIRemoveResourcesByTypeRepositoryFactoryPTCoreDataAccessPTCoreResourceListPT	<ul style="list-style-type: none">AddResourceRequestAddResourceResponseDataResourceUnavailableFaultDestroyDataResourceRequestDestroyDataResourceResponseGenericQueryRequestGenericQueryResponseGetDataResourcePropertyDocumentRequestGetDataResourcePropertyDocumentResponseGetRepositoryIdRequestGetRepositoryIdResponseGetResourceFactoryRequestGetResourceFactoryResponseGetResourceListRequestGetResourceListResponse

Current status (III), Interfaces provided (IV) *RepositoryFactory*



Definition

Imports	Types
↶ ..\resources\spec\wsdai_core_porttypes.wsdl	➡ S http://eu.ist.ontogrid.org/namespaces/ontologyaccess/WS-DAIOnt-RDF(S)

Services	Bindings	Port Types	Messages
		<ul style="list-style-type: none">RepositoryPTRepositoryFactoryPT<ul style="list-style-type: none">GetResourceFactoryCoreDataAccessPTCoreResourceListPT	<ul style="list-style-type: none">AddResourceRequestAddResourceResponseDataResourceUnavailableFaultDestroyDataResourceRequestDestroyDataResourceResponseGenericQueryRequestGenericQueryResponseGetDataResourcePropertyDocumentRequestGetDataResourcePropertyDocumentResponseGetRepositoryIdRequestGetRepositoryIdResponseGetResourceFactoryRequestGetResourceFactoryResponseGetResourceListRequestGetResourceListResponse

Current status (III), Interfaces provided (V) *Resource*



Definition

Imports

Types

<http://eu.ist.ontogrid.org/wsdaion>

Services

Bindings

Port Types

- ResourcePT
 - AddComment
 - AddIsDefinedBy
 - AddLabel
 - AddMember
 - AddPropertyValue
 - AddSeeAlso
 - AddValue
 - GetComments
 - GetDefinableProperties
 - GetDefinedProperties
 - GetIsDefinedBy
 - GetLabels
 - GetMembers
 - GetPropertyValues

Mess

- ResourcePT
 - AddComment
 - AddIsDefinedBy
 - AddLabel
 - AddMember
 - AddPropertyValue
 - AddSeeAlso
 - AddValue
 - GetComments
 - GetDefinableProperties
 - GetDefinedProperties
 - GetIsDefinedBy
 - GetLabels
 - GetMembers
 - GetPropertyValues
 - GetSeeAlsos
 - GetTypes
 - GetValues
 - IsPropertyDefinable
 - IsPropertyDefined
 - RemoveComments
 - RemoveIsDefinedBy
 - RemoveLabel
 - RemoveMember
 - RemovePropertyValues
 - RemoveSeeAlsos
 - RemoveValues

Current status (III), Interfaces provided (VI) Class



Definition

Imports

← ..\resources\spec\wsdai_core_porttypes.wsdl

Types

→ [http://eu.ist.ontogrid.org/namespaces/ontologyaccess/WS-DAIOnt-RDF\(S\)](http://eu.ist.ontogrid.org/namespaces/ontologyaccess/WS-DAIOnt-RDF(S))

Services	Bindings	Port Types	Messages
		<ul style="list-style-type: none">ClassPT<ul style="list-style-type: none">AddRelatedClassGetInstancesGetRelatedClassesGetRelatedPropertiesIsInstanceIsRelatedClassRemoveRelatedClassesCoreDataAccessPTCoreResourceListPT	<ul style="list-style-type: none">AddRelatedClassRequestAddRelatedClassResponseDataResourceUnavailableFaultDestroyDataResourceRequestDestroyDataResourceResponseGenericQueryRequestGenericQueryResponseGetDataResourcePropertyDocumentRequestGetDataResourcePropertyDocumentResponseGetInstancesRequestGetInstancesResponseGetRelatedClassesRequestGetRelatedClassesResponseGetRelatedPropertiesRequestGetRelatedPropertiesResponse

Current status (III), Interfaces provided (VII) *Property*



Definition

Imports
← ..\resources\spec\wsdai_core_porttypes.wsdl

Types
→ [http://eu.ist.ontogrid.org/namespaces/ontologyaccess/WS-DAIOnt-RDF\(S\)](http://eu.ist.ontogrid.org/namespaces/ontologyaccess/WS-DAIOnt-RDF(S))

Services

Bindings

Port Types

- PropertyPT
 - AddClassToDomain
 - AddClassToRange
 - AddRelatedProperty
 - AddValue
 - GetDomain
 - GetRange
 - GetRelatedProperties
 - GetValues
 - IsClassInDomain
 - IsClassInRange
 - IsPropertyRelated
 - RemoveClassFromDomain
 - RemoveClassFromRange
 - RemoveRelatedProperties

Messages

- PropertyPT
 - AddClassToDomain
 - AddClassToRange
 - AddRelatedProperty
 - AddValue
 - GetDomain
 - GetRange
 - GetRelatedProperties
 - GetValues
 - IsClassInDomain
 - IsClassInRange
 - IsPropertyRelated
 - RemoveClassFromDomain
 - RemoveClassFromRange
 - RemoveRelatedProperties
 - RemoveValue

Request
Response

Current status (III), Interfaces provided (VIII) *Statement*



Definition

Imports	Types
← ..\resources\spec\wsdai_core_porttypes.wsdl	→ http://eu.ist.ontogrid.org/namespaces/ontologyaccess/WS-DAIOnt-RDF(S)

Services	Bindings	Port Types	Messages
		<ul style="list-style-type: none">StatementPT<ul style="list-style-type: none">AddElementsGetElementsIsElementRemoveElementsCoreDataAccessPTCoreResourceListPT	<ul style="list-style-type: none">AddElementsRequestAddElementsResponseDataResourceUnavailableFaultDestroyDataResourceRequestDestroyDataResourceResponseGenericQueryRequestGenericQueryResponseGetDataResourcePropertyDocumentRequestGetDataResourcePropertyDocumentResponseGetElementsRequestGetElementsResponseGetResourceListRequestGetResourceListResponseInvalidConfigurationDocumentFaultInvalidDatasetFormatFault

Current status (III), Interfaces provided (IX) *List*



Definition

Imports

← ..\resources\spec\wsdai_core_porttypes.wsdl

Types

→ [http://eu.ist.ontogrid.org/namespaces/ontologyaccess/WS-DAIOnt-RDF\(S\)](http://eu.ist.ontogrid.org/namespaces/ontologyaccess/WS-DAIOnt-RDF(S))

Services	Bindings	Port Types	Messages
		<ul style="list-style-type: none">ListPT<ul style="list-style-type: none">AddMemberAddRestGetMembersGetRestIsMemberIsNodeRemoveMemberRemoveRestCoreDataAccessPTCoreResourceListPT	<ul style="list-style-type: none">AddMemberRequestAddMemberResponseAddRestRequestAddRestResponseDataResourceUnavailableFaultDestroyDataResourceRequestDestroyDataResourceResponseGenericQueryRequestGenericQueryResponseGetDataResourcePropertyDocumentRequestGetDataResourcePropertyDocumentResponseGetMembersRequestGetMembersResponseGetResourceListRequestGetResourceListResponse

Current status (III), Interfaces provided (XI) *Container*



Definition

Imports
← ..\resources\spec\wsdai_core_porttypes.wsdl

Types
→ [http://eu.ist.ontogrid.org/namespaces/ontologyaccess/WS-DAIOnt-RDF\(S\)](http://eu.ist.ontogrid.org/namespaces/ontologyaccess/WS-DAIOnt-RDF(S))

Services	Bindings	Port Types	Messages
		<ul style="list-style-type: none">ContainerPT<ul style="list-style-type: none">AddMemberGetContainerTypeGetMembersGetNumberOfMembersIsMemberRemoveMembersContainerFactoryPTContainerIteratorPTCoreDataAccessPTCoreResourceListPT	<ul style="list-style-type: none">AddMemberRequestAddMemberResponseDataResourceUnavailableFaultDestroyDataResourceRequestDestroyDataResourceResponseGenericQueryRequestGenericQueryResponseGetAltFactoryRequestGetAltFactoryResponseGetContainerIteratorFactoryRequestGetContainerIteratorFactoryResponseGetContainerTypeRequestGetContainerTypeResponseGetDataResourcePropertyDocumentRequestGetDataResourcePropertyDocumentResponse

Current status (III), Interfaces provided (XII) *ContainerFactory*



Definition

Imports	Types
← ..\resources\spec\wsdai_core_porttypes.wsdl	⇒ http://eu.ist.ontogrid.org/namespaces/ontologyaccess/WS-DAIOnt-RDF(S)

Services	Bindings	Port Types	Messages
		<ul style="list-style-type: none">ContainerPTContainerFactoryPT<ul style="list-style-type: none">GetAltFactoryGetContainerIteratorFactoryContainerIteratorPTCoreDataAccessPTCoreResourceListPT	<ul style="list-style-type: none">AddMemberRequestAddMemberResponseDataResourceUnavailableFaultDestroyDataResourceRequestDestroyDataResourceResponseGenericQueryRequestGenericQueryResponseGetAltFactoryRequestGetAltFactoryResponseGetContainerIteratorFactoryRequestGetContainerIteratorFactoryResponseGetContainerTypeRequestGetContainerTypeResponseGetDataResourcePropertyDocumentRequestGetDataResourcePropertyDocumentResponse

Current status (III), Interfaces provided (XIII) *ContainerIterator*



Definition

Imports	Types
← ..\resources\spec\wsdai_core_porttypes.wsdl	→ http://eu.ist.ontogrid.org/namespaces/ontologyaccess/WS-DAIOnt-RDF(S)

Services	Bindings	Port Types	Messages
		<ul style="list-style-type: none">ContainerPTContainerFactoryPTContainerIteratorPT<ul style="list-style-type: none">GetNextMemberGetNextMemberSetGetPreviousMemberGetPreviousMemberSetHasNextMemberHasNextMemberSetHasPreviousMemberHasPreviousMemberSetCoreDataAccessPTCoreResourceListPT	<ul style="list-style-type: none">AddMemberRequestAddMemberResponseDataResourceUnavailableFaultDestroyDataResourceRequestDestroyDataResourceResponseGenericQueryRequestGenericQueryResponseGetAltFactoryRequestGetAltFactoryResponseGetContainerIteratorFactoryRequestGetContainerIteratorFactoryResponseGetContainerTypeRequestGetContainerTypeResponseGetDataResourcePropertyDocumentRequestGetDataResourcePropertyDocumentResponse

Current status (III), Interfaces provided (XIV)

Alt



Definition

Imports: `.. \resources\spec\wsdai_core_porttypes.wsdl`

Types: [http://eu.ist.ontogrid.org/namespaces/ontologyaccess/WS-DAIOnt-RDF\(S\)](http://eu.ist.ontogrid.org/namespaces/ontologyaccess/WS-DAIOnt-RDF(S))

Services	Bindings	Port Types	Messages
		<ul style="list-style-type: none">AltPTAddAlternativeMemberAddDefaultMemberGetAlternativeMembersGetDefaultMembersIsAlternativeMemberIsDefaultMemberRemoveAlternativeMembersRemoveDefaultMembersCoreDataAccessPTCoreResourceListPT	<ul style="list-style-type: none">AddAlternativeMemberRequestAddAlternativeMemberResponseAddDefaultMemberRequestAddDefaultMemberResponseDataResourceUnavailableFaultDestroyDataResourceRequestDestroyDataResourceResponseGenericQueryRequestGenericQueryResponseGetAlternativeMembersRequestGetAlternativeMembersResponseGetDataResourcePropertyDocumentRequestGetDataResourcePropertyDocumentResponseGetDefaultMembersRequestGetDefaultMembersResponse

Future Work

- Behavioural aspects
 - Static properties
 - Configurable properties
- Test suite
- Sample use cases
- Glossary of terms