



A unified resource model for NextGRID

Philipp Wieder et. al.
GGF 18, GSA-RG
September, 13, 2006
Washington, DC, USA



UDAP – An introduction

- Facilitate interactions between service provider and service consumer
- Decouple provider and consumer
- Model: Allow arbitrary resource (request) descriptions to be used with UDAP
- Architecture: Use additional component acting as intermediary



UDAP message contents (selected)

- Resource
 - ☐ Type
 - ☐ ResourceDescription
 - ☐ ResourceDescriptionDialect
 - ☐ StartTime
 - ☐ DeltaTime
- Activity
 - ☐ Type
 - ☐ ActivityDescription
 - ☐ ActivityDescriptionDialect
 - ☐ ResourceRef
- Rule
 - ☐ RuleDescription
 - ☐ RuleDescriptionDialect
 - ☐ ResourceRef



Simple example: “Run Gaussian on a Power PC”

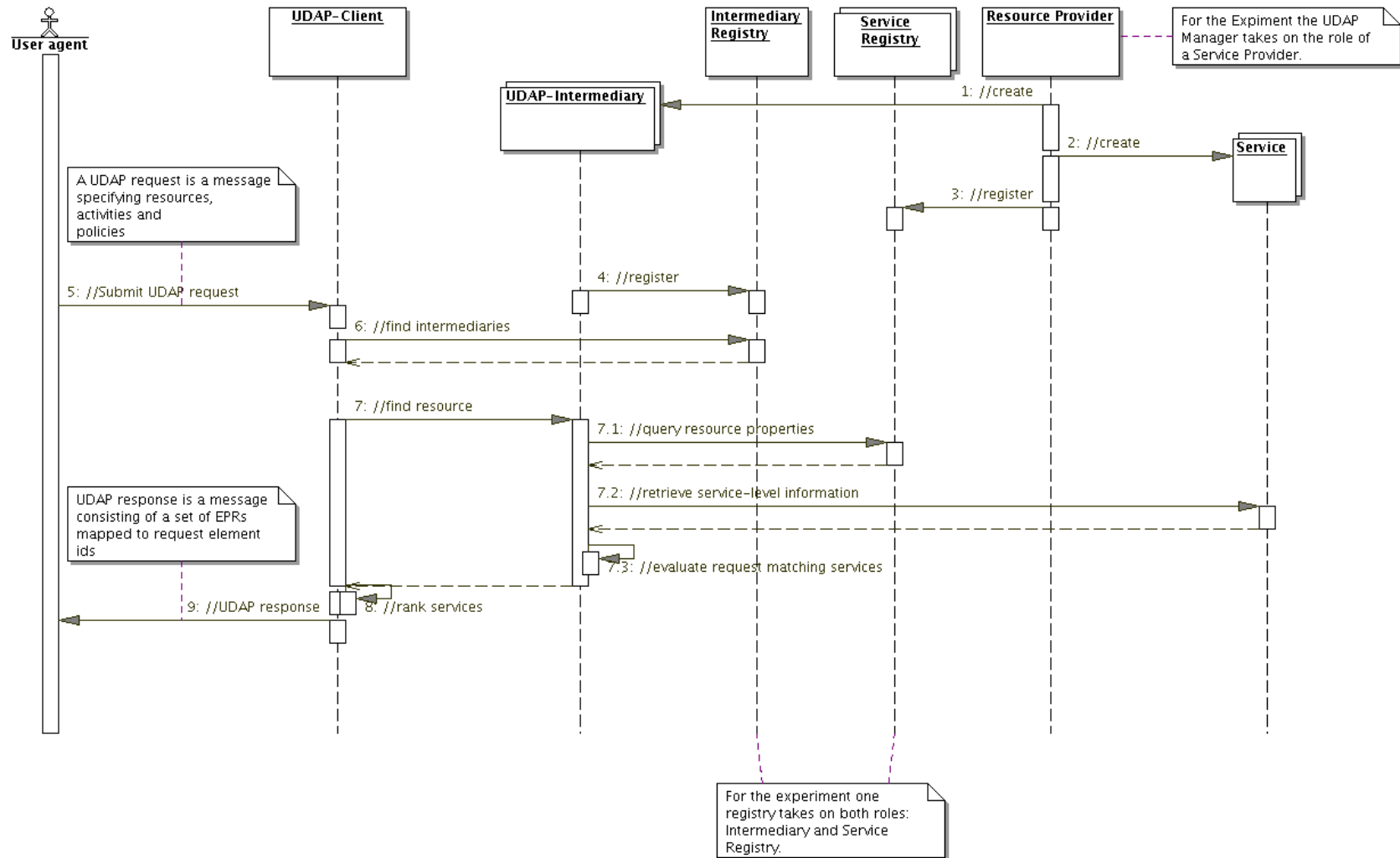
```
<udap:UDAPRequest xmlns:udap="http://nextgrid.org/2005/06/udap">
```

```
  <udap:Resource>
    <udap:Id>1</udap:Id>
    <udap:Type>ComputeResource</udap:Type>
    <udap:ResourceDescription Dialect="http://schemas.ggf.org/jsdl/2005/11/jsdl">
      <jsdl:Resources xmlns:jsdl="http://schemas.ggf.org/jsdl/2005/11/jsdl">
        <jsdl:CPUArchitecture>
          <jsdl:CPUArchitectureName>powerpc</jsdl:CPUArchitectureName>
        </jsdl:CPUArchitecture>
      </jsdl:Resources>
    </udap:ResourceDescription>
  </udap:Resource>
```

```
  <udap:Activity>
    <udap:Id>2</udap:Id>
    <udap:Type>Application</udap:Type>
    <udap:ActivityDescription Dialect="http://schemas.ggf.org/jsdl/2005/11/jsdl">
      <jsdl:Application xmlns:jsdl="http://schemas.ggf.org/jsdl/2005/11/jsdl">
        <jsdl:ApplicationName>Gaussian</jsdl:ApplicationName>
        <jsdl:ApplicationVersion>3.4</jsdl:ApplicationVersion>
      </jsdl:Application>
    </udap:ActivityDescription>
    <udap:RequestRef>1</udap:RequestRef>
  </udap:Activity>
</udap:UDAPRequest>
```



Service discovery use case





Interface to scheduler

- Operations needed?
 - ☐ Submit scheduling problem
 - ☐ Receive scheduling decisions
 - ☐ ...
- Scheduling problem representation
 - ☐ List of capabilities of potential resources
 - ☐ SLAs
 - ☐ ...
- Important: Status of the scheduling process has to be obtained