

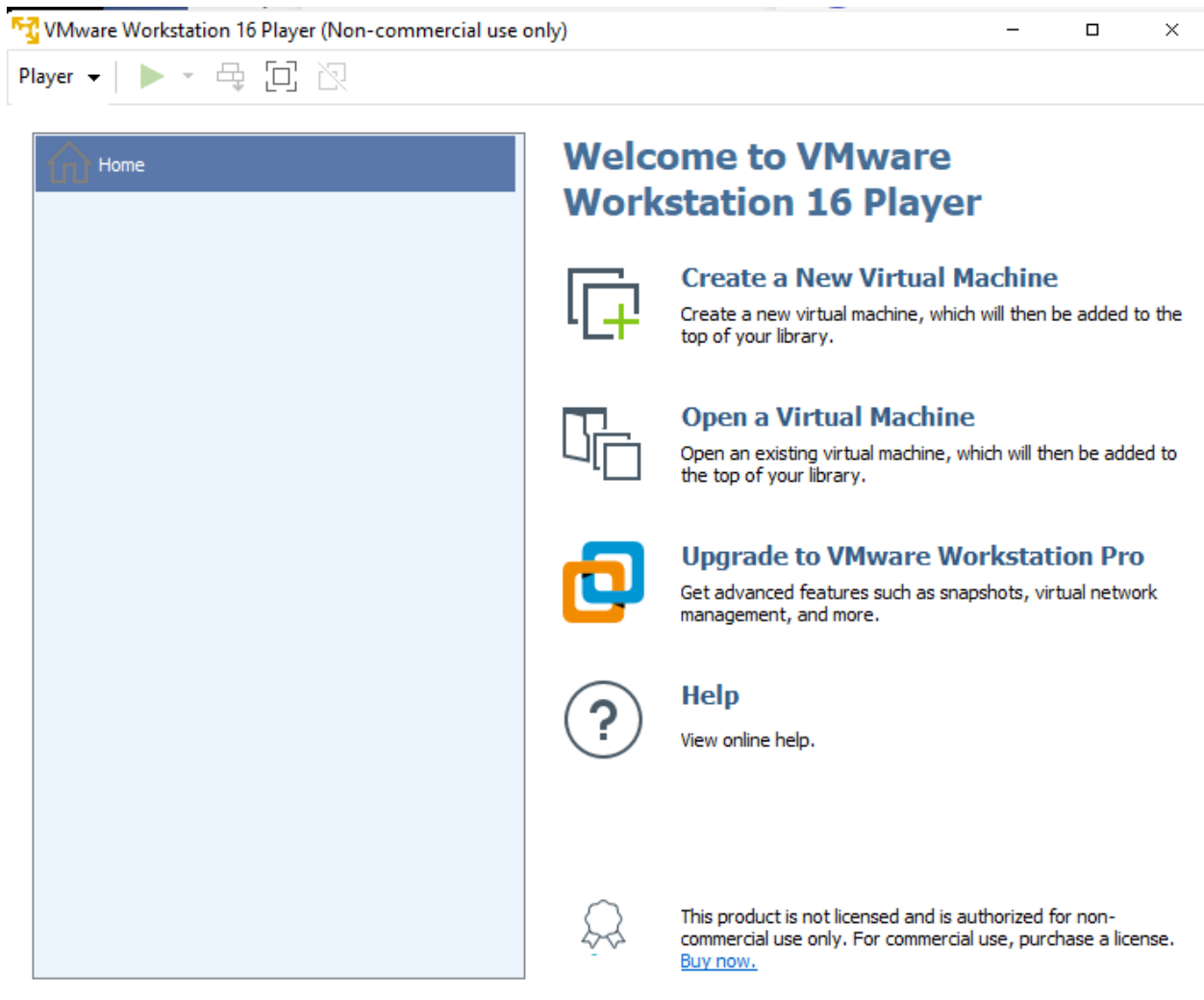
Steps to Stand Up RegScale Appliance with VMware Player

Helpful links:

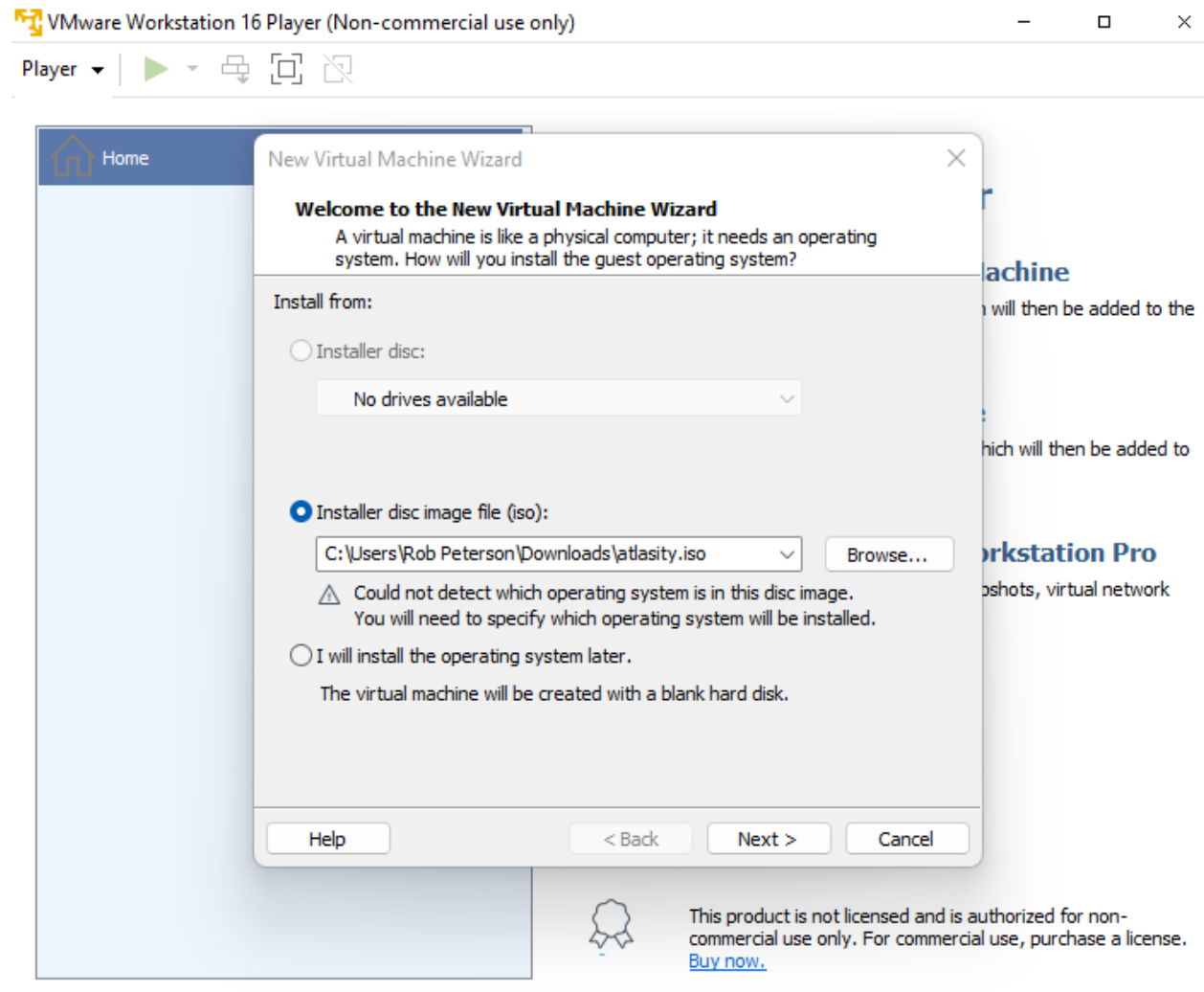
- VMWare Player for Windows: <https://www.vmware.com/products/workstation-player/workstation-player-evaluation.html>
- RegScale appliance file: <https://www.regscale.com/gatekeeper/appliance>
- RegScale appliance setup instructions: <https://regscale.com/documentation/appliance>

Take the following steps for setup:

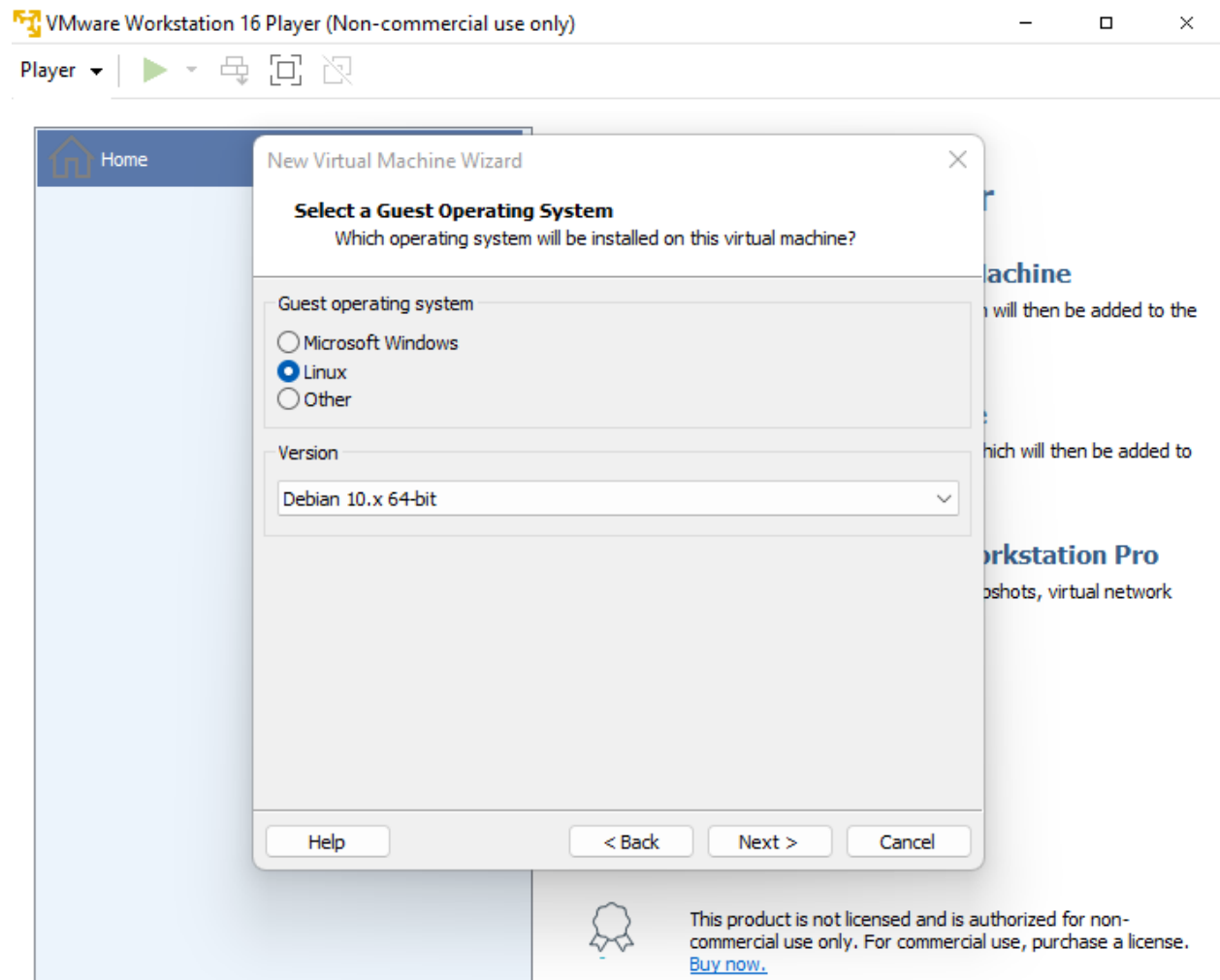
1. Download the appliance file from <https://atlasity.blob.core.windows.net/iso/atlasity.iso>
2. Within VMWare Workstation Player, click **Create a New Virtual Machine**.



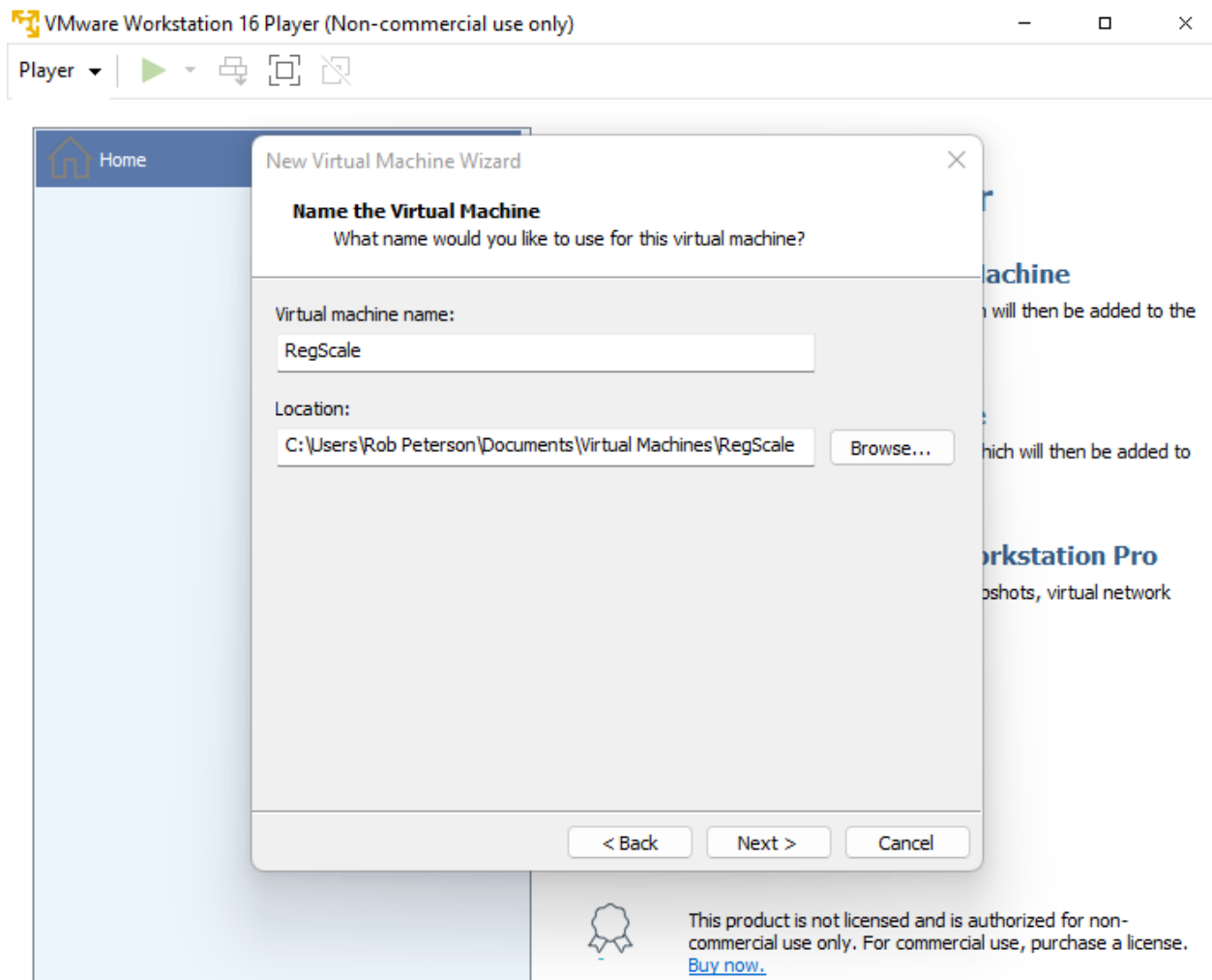
3. Browse for the *atlasity.iso* disc image file, then click **Next**.



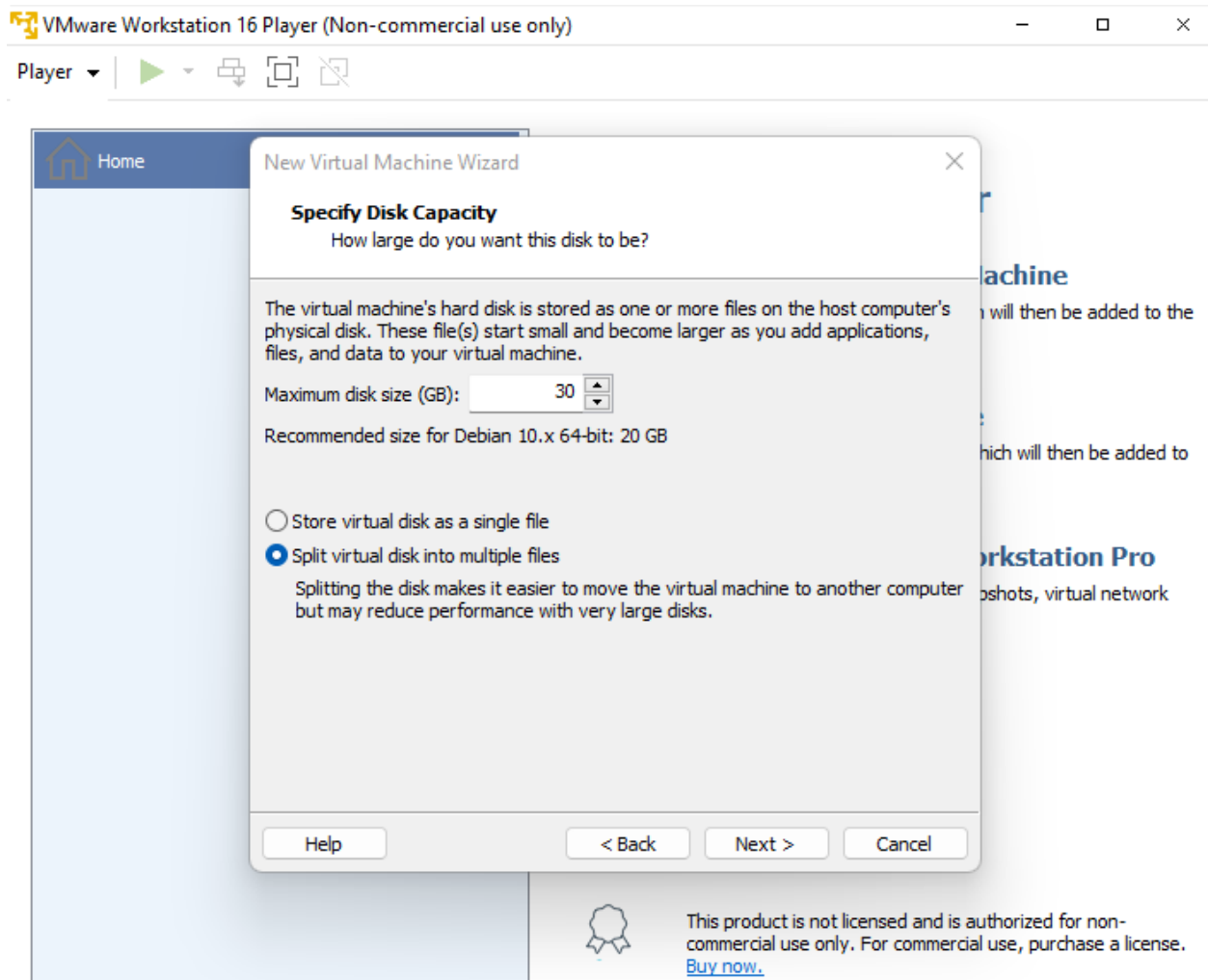
4. Select *Linux* as the operating system with version *Debian 10.x 64-bit*, then click **Next**.



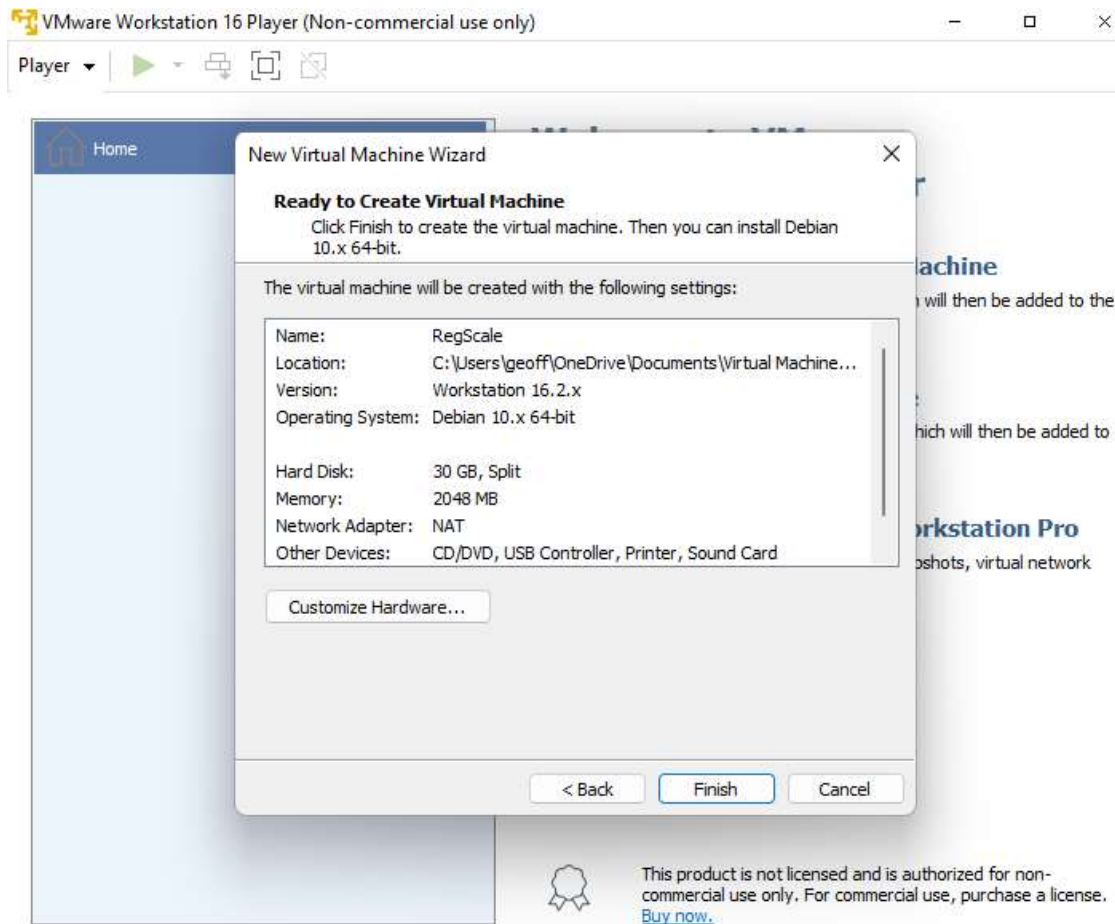
5. Name the virtual machines *RegScale*, then click **Next**.



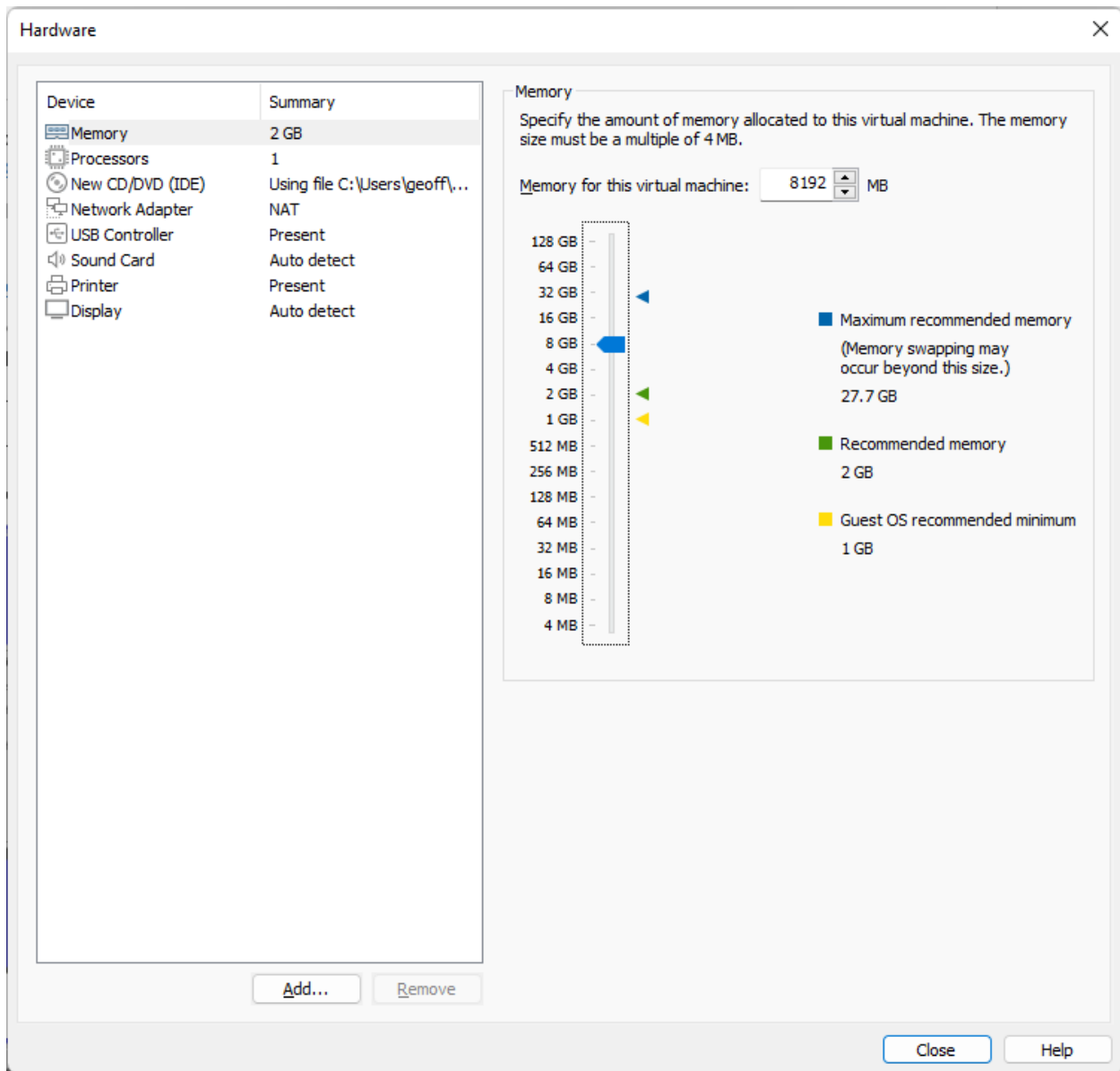
6. Set the maximum disk size to *30 GB*, select *Split virtual disk into multiple files*, then click **Next**.



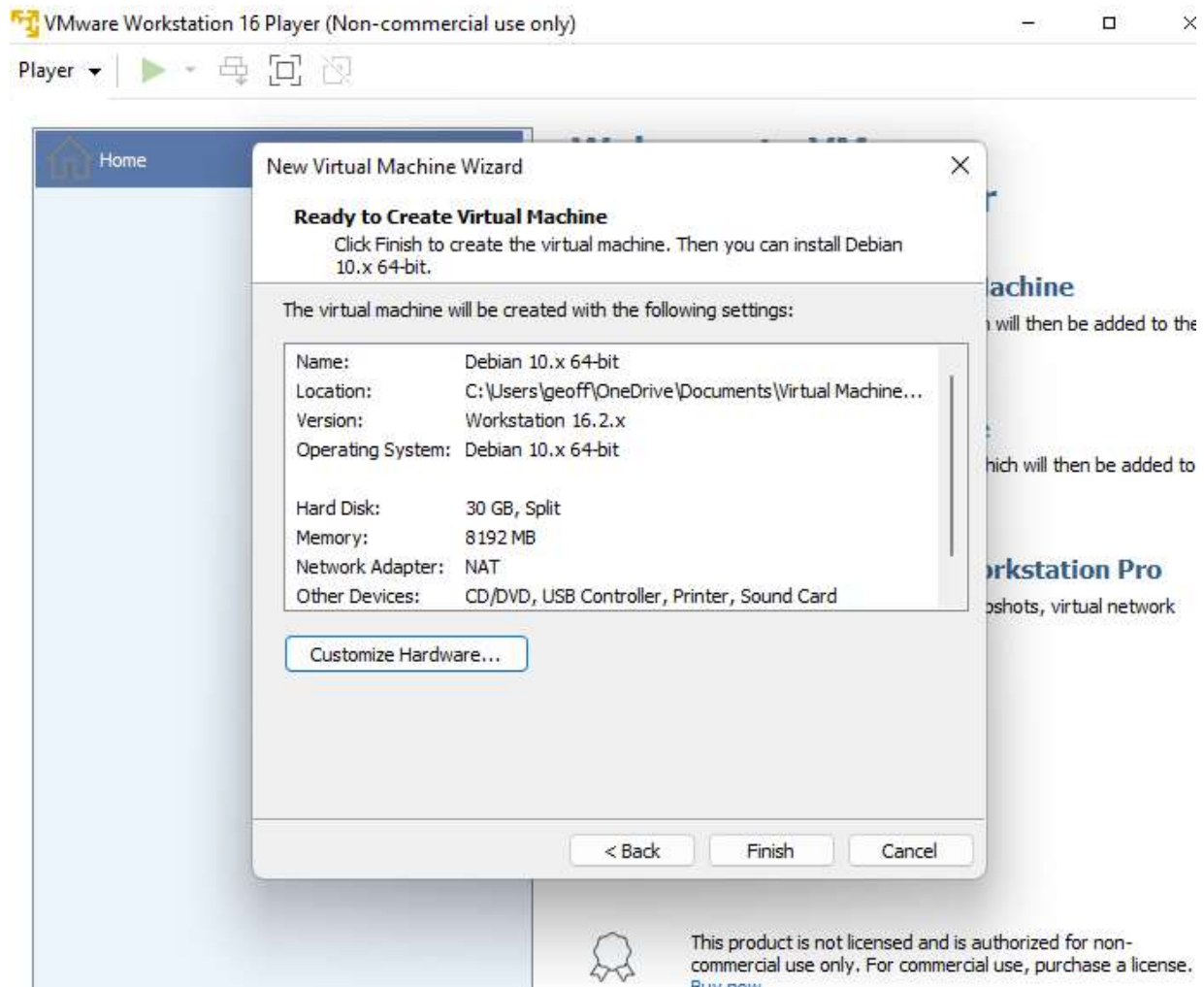
7. Click **Customize Hardware...**



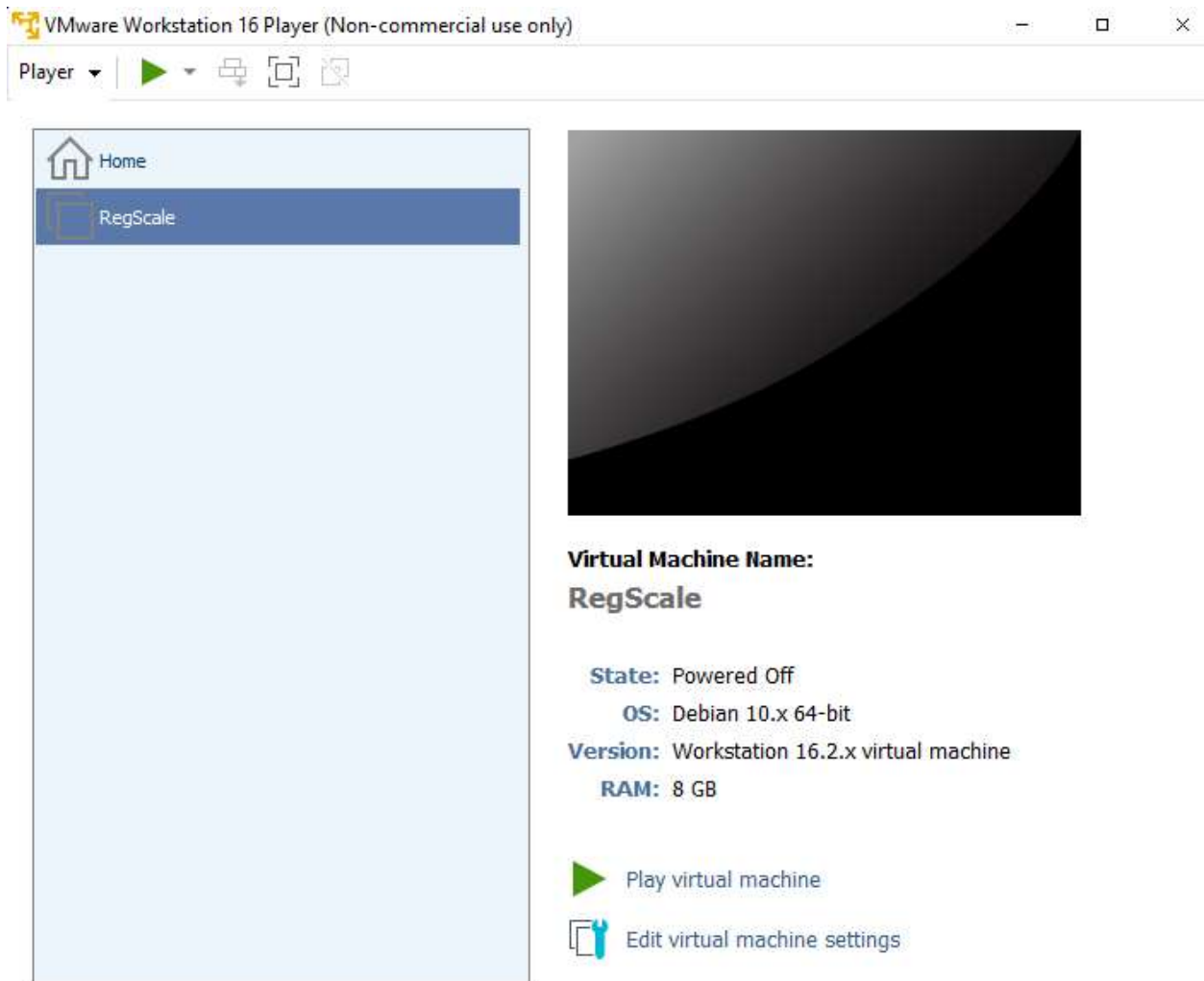
8. Change the memory to 8 GB, then click **Close**.



9. Click **Finish**.



10. Click **Play virtual machine**.



11. Resume following the instructions in the RegScale documentation (*Install to local drive* section, step 5.)

After RegScale is running it may ask for a login in the VM – this is to access VM details

- User name: root
- Password: the password entered in Step 1 of initial configuration

Troubleshooting commands:

- `at1 status`
- `at1 logs`
- `docker container ls`
- `docker logs ###` (where ### is the first three characters of the container ID)
- `df -lh`

- `cd /atlas/system` is where docker-compose file resides
- `cat docker-compose.yml` will show the contents of the yml file

Additional troubleshooting information:

- **The VM has been created and is running, but I'm unable to browse to the Atlasity URL (e.g., getting an `ERR_CONNECTION_REFUSED` message).**
 - Another symptom is that when using the "atl status" command, you'll see that the database service is restarting.
 - Warning: These instructions will completely reset the SQL Server database, meaning any existing information will be lost. This step is only intended for users having issues getting the product running for the first time.
 - SSH via PowerShell into the VM using the information (the IP address in the picture below is only an example).

```
ATLASITY appliance services

Atlasity: https://172.16.215.138:8443
Web shell: https://172.16.215.138:12320
Webmin: https://172.16.215.138:12321
SSH/SFTP: root@172.16.215.138 (port 22)

TKLBAM (Backup and Migration): NOT INITIALIZED

TurnKey Backups and Cloud Deployment
https://hub.turnkeylinux.org
```

- Run the following commands to stop all running services, remove the SQL Server volume, then restart the services (which rebuild the SQL Server volume).
 - `service atlasity stop`
 - `docker volume rm system_sqlvolume`
 - `service atlasity start`
- It may take a few minutes for the site to be reachable.