

FluorChem R System

Infrared Fluorescent Western Blot Imaging

Satisfy everyone in your lab with an imager that does it all – and takes the complication out of getting reliable, fully analyzed data too! The FluorChem™ R system gives you the full solution for Western blot detection and analysis with three key ingredients:



APPLICATION FLEXIBILITY

Built-in IR plus RGB LEDs, UV and white light sources gets you get crisp, clear images every time – regardless of your application.

SENSITIVITY

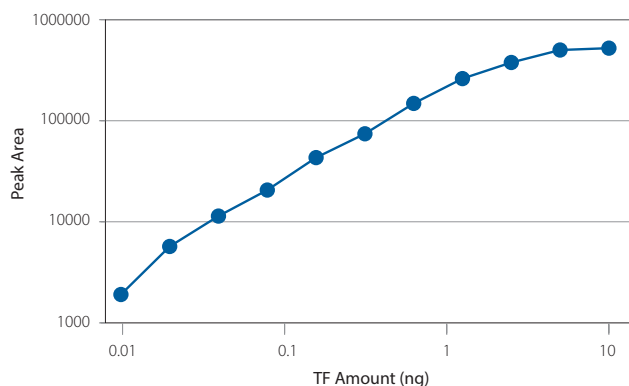
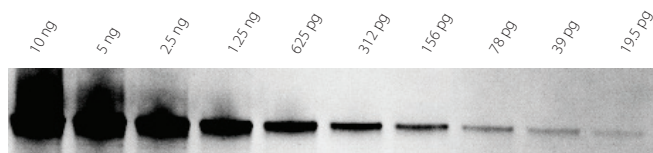
Its whopping 8.3 megapixel CCD camera and intuitive 10.4 inch touch screen makes it so easy to see those tiny, hard to detect bands.

EASE OF USE

Who says you have to be in the lab to image your Westerns? Control the FluorChem R system and access your data from just about anywhere with its browser-based Digital Darkroom software.

Transition confidently

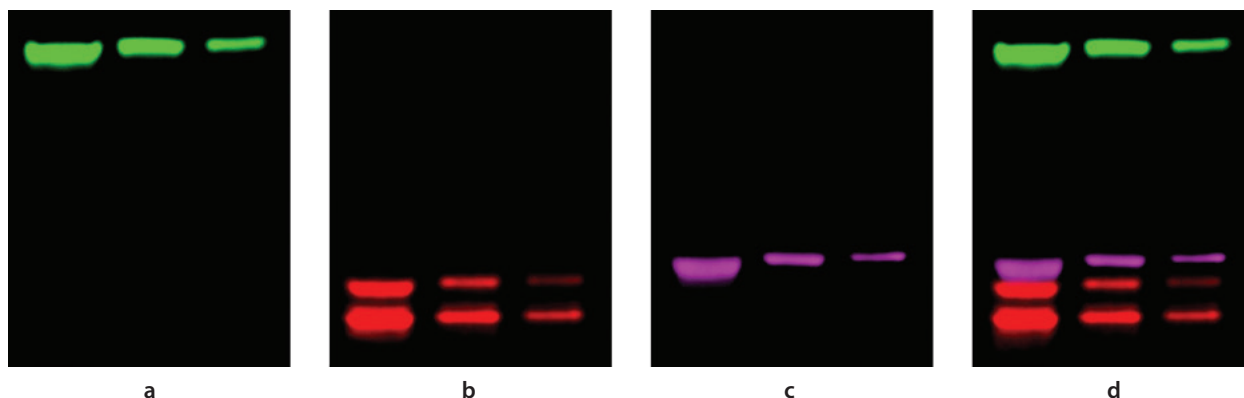
Infrared imaging lets you keep the sensitivity of film without the dynamic range trade-off, and get three-channel multiplexing in the process.



Infrared (IR) fluorescent detection of human transferrin (TF) in HeLa lysates. Two-fold serial dilutions of TF from 10 ng to 4.9 pg were loaded onto a blot and detected using IR fluorescent-tagged secondary antibody and imaged using the 835 nm IR channel (left). Results were linear from 9.5 pg to 5 ng (right) with a 9.5 pg LOD.

Transition effortlessly

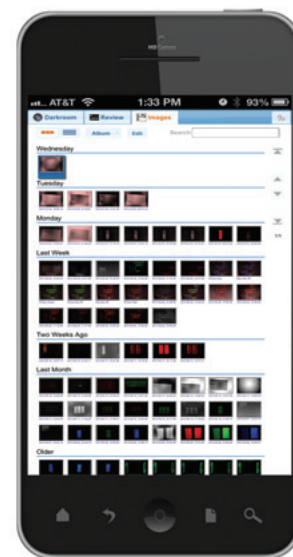
Since the FluorChem R system is optimized for multimode infrared detection, now you can multiplex without having to strip and reprobe!



Multiplex detection of HSP70 (a), ERK1/2 (b) and β -actin (c) with IR fluorescence in HeLa lysates. Independent images for each fluorescent channel were obtained sequentially and a composite image (d) was generated by overlaying the individual images. All three colors were imaged in a single scan using Digital Darkroom acquisition software.

Specifications

DESCRIPTION	SPECIFICATION
Dynamic Range	Up to 65,536 grayscale
Field of View	16 cm x 12 cm maximum
Detector	8.3 megapixel scientific-grade CCD, 16-bit A/D, thermo-electrically cooled to -30°C , absolute and regulated, 5-minute cool-down time
Optics	50-mm, f/1.4 motorized fixed lens
Light Sources	IR and RGB fluorescent LED epi-excitation: 747, 632, 534 and 475 nm, 302 nm UV transilluminator (365 nm optional), Epi-white lights, Trans-white light via white light conversion screen
Emission Filters	10-position motorized filter wheel with 835, 710, 607, 593 and 537 nm filters
Computer	Integrated computer with 10.4-inch LCD touchscreen, 480 GB solid-state hard drive
Software	Digital Darkroom software and AlphaView Stand Alone Analysis software
Size	32 cm W x 62 cm D x 62 cm H
Weight	34 kg
Power	100-230V AC, 345 W
Certifications	CE, TUV



Go anywhere with remote access Digital Darkroom software.

FluorChem R system:
part # 92-15313-00



金萬林企業股份有限公司
KIMFOREST ENTERPRISE CO., LTD.

免付費電話

0800-009-695

Http://www.kimforest.com
Email:kimforest@gmail.com