

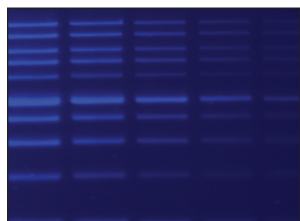
# AZURE 200

## GEL IMAGING WORKSTATION



# APPLICATIONS

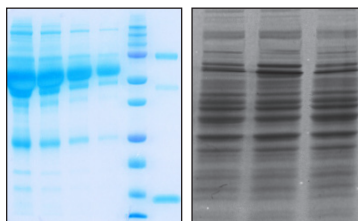
## “SAFE” DYE DETECTION



**Blue Light Imaging**  
SYBR® Safe, SYBR® Gold,  
SYBR® Green

A less toxic alternative to ethidium bromide, less-harmful “Safe” dyes can be imaged with the EPI Blue LEDs. Epi Blue is recommended as it delivers superior & uniform illumination with reduced background compared to transilluminated blue light.

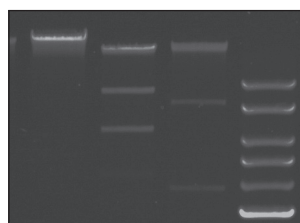
## PROTEIN ANALYSIS



**Visible Imaging**  
Coomassie Blue,  
Silver Stain

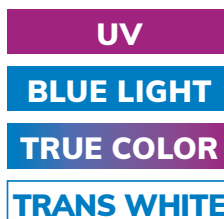
Protein gels stained with Coomassie blue or silver stain can be easily be imaged using the visible imaging tray or trans white LED table (optional).

## DNA DETECTION WITH ETHIDIUM BROMIDE



**UV Imaging**  
Ethidium Bromide

With a dual-wavelength 302 nm and 365 nm UV transilluminator, images of ethidium bromide-stained DNA gels can be captured in a fraction of a second. A safety switch prevents accidental exposure to the light sources when the door is open. For band excision, the imager can be operated with the door open and the UV transilluminator can be pulled out. The switch can be overridden with a custom key.



### UPGRADES AVAILABLE

for chemiluminescence, RGB fluorescence  
and NIR fluorescence.

# AZURESPOT PRO ANALYSIS SOFTWARE

AzureSpot Pro helps you interpret your data easily and accurately. Analyze your gels, blots, cell-based assays or arrays in either manual or automatic modes.

Automatically detect bands, even on distorted gels, and apply your selected method of background correction. Visualize intensity plots by lane (sample) and channel (probe) to get detailed information about your proteins of interest.

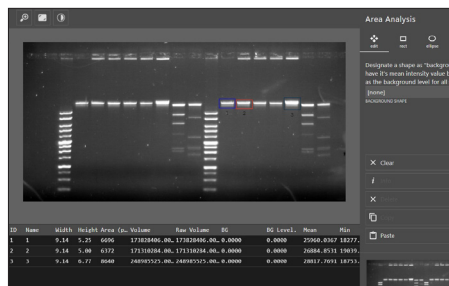


Download a 30-day trial of AzureSpot Pro

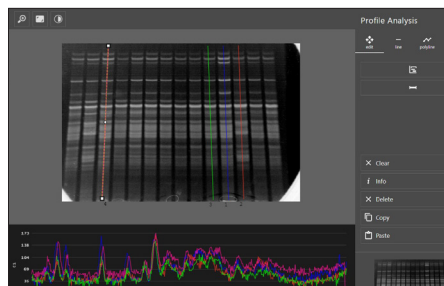
## TOOLS FOR:

- 2D Densitometry
- Automatic Band Detection
- Molecular Weight Analysis
- Quantity Calibration
- Multiplex Analysis
- Colony Counting
- Arrays and Plates
- Signal Normalization

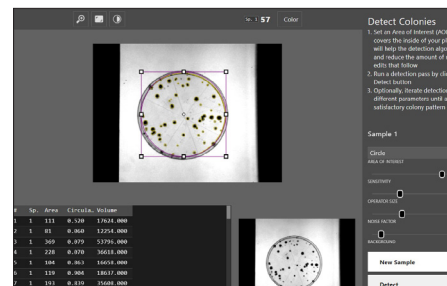
## ANALYSIS MODULES



For simple gels with few bands, Area Analysis allows users to draw shapes around areas of interest for quick data results.



Profile Analysis makes it easy to visualize and document trends and similarities within an image.



The Colony Counter module provides fast and easy counting of spots and features.

# AZURE 200 SPECIFICATIONS

Camera	5.4 MP 16-bit, 65,536 grayscale
7 Position Filter Wheel	✓
Trans UV302 and 365nm	✓
Color Imaging	✓

Trans-white Imaging	✓
Epi Blue Light Imaging	✓
UV Safety Override Switch	✓
Field of View	20 x 15 cm
Footprint (W x H x D)	42 x 56 x 33 cm



6747 Sierra Court, Suites A-B • Dublin, CA 94568 USA  
Phone: 925.307.7127 • Fax: 925.905.1816  
info@azurebiosystems.com • www.azurebiosystems.com



For research purposes only.

Copyright © 2023 Azure Biosystems. All rights reserved. The Azure Biosystems logo and Azure Biosystems® are trademarks of the Company. SYBR® is a trademark of Thermo Fisher Scientific. All other trademarks, service marks and trade names appearing in this brochure are the property of their respective owners.

MM-0149 R1