

Copyright Tinkerforge GmbH 2019.
 This documentation describes Open Hardware and is licensed under the CERN OHL v. 1.1.
 You may redistribute and modify this documentation under the terms of the CERN OHL v.1.1. (<http://ohw.org/cernohl>). This documentation is distributed WITHOUT ANY EXPRESS OR IMPLIED WARRANTY, INCLUDING OF MERCHANTABILITY, SATISFACTORY QUALITY AND FITNESS FOR A PARTICULAR PURPOSE. Please see the CERN OHL v.1.1 for applicable conditions

Bricklets
 bricklets.sch

Power Supply
 power_supply.sch

Copyright (©) 2019, B.Nordmeyer <bastian@tinkerforge.com>
 Licensed under CERN OHL v.1.1

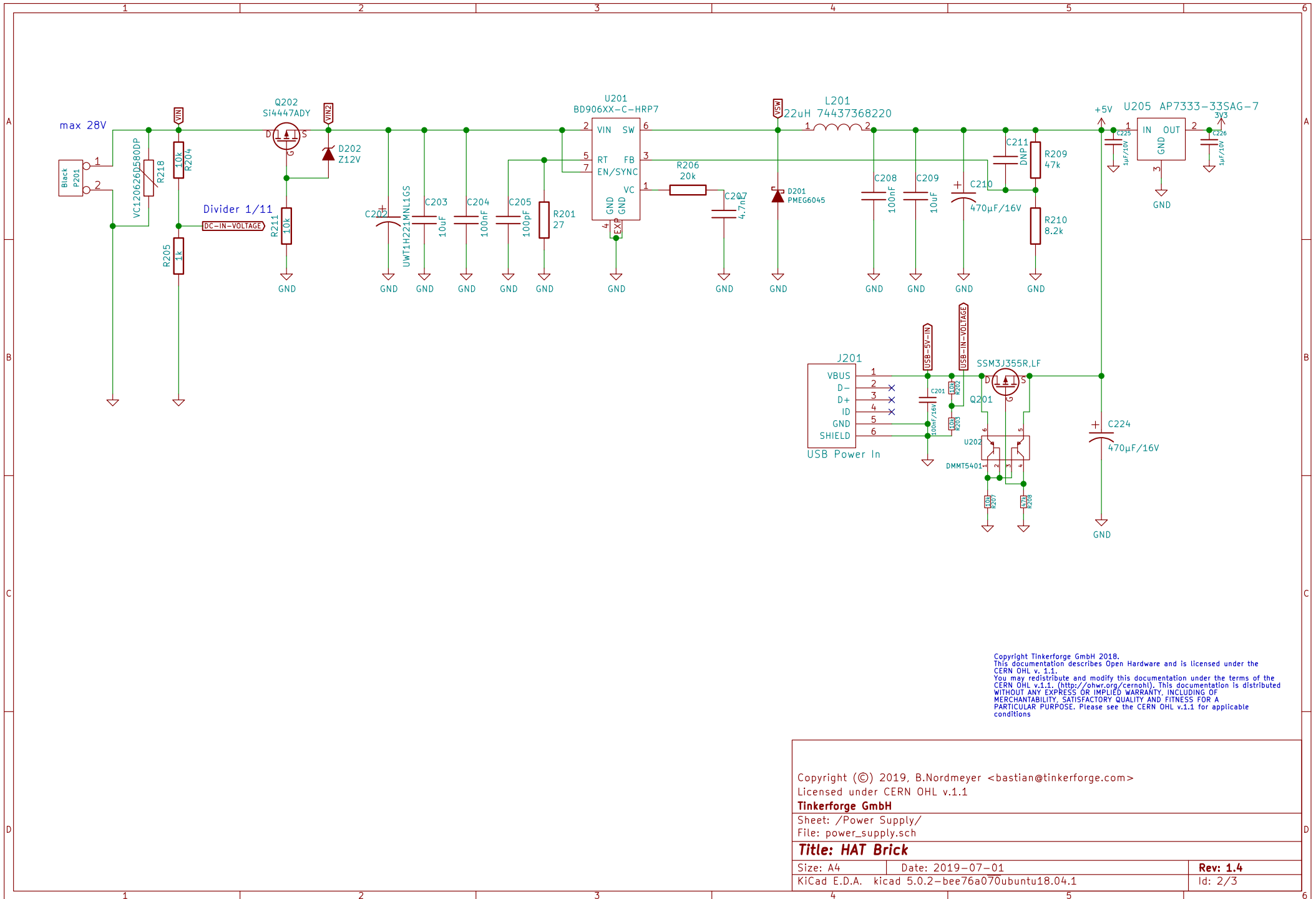
Tinkerforge GmbH

Sheet: /
 File: hat.sch

Title: HAT Brick

Size: A4 | Date: 2019-07-01
 KiCad E.D.A. kicad 5.0.2-bee76a070ubuntu18.04.1

Rev: 1.4
 Id: 1/3



Copyright Tinkerforge GmbH 2018.
 This documentation describes Open Hardware and is licensed under the CERN OHL v.1.1.
 You may redistribute and modify this documentation under the terms of the CERN OHL v.1.1. (<http://ohw.org/cernohl>). This documentation is distributed WITHOUT ANY EXPRESS OR IMPLIED WARRANTY, INCLUDING OF MERCHANTABILITY, SATISFACTORY QUALITY AND FITNESS FOR A PARTICULAR PURPOSE. Please see the CERN OHL v.1.1 for applicable conditions

Copyright (©) 2019, B.Nordmeyer <bastian@tinkerforge.com>
 Licensed under CERN OHL v.1.1

Tinkerforge GmbH

Sheet: /Power Supply/
 File: power_supply.sch

Title: HAT Brick

Size: A4 Date: 2019-07-01
 KiCad E.D.A. kicad 5.0.2- bcc76a070ubuntu18.04.1

Rev: 1.4
 Id: 2/3

A

E

D

F

C

G

Copyright (©) 2019, B.Nordmeyer <bastian@tinkerforge.com>
Licensed under CERN OHL v.1.1

Tinkerforge GmbH

Sheet: /Bricklets/
File: bricklets.sch

Title: HAT Brick

Size: A4 Date: 2019-07-01
KiCad E.D.A. kicad 5.0.2-bee76a070ubuntu18.04.1

Rev: 1.4
Id: 3/3

Copyright Tinkerforge GmbH 2019.
This documentation describes Open Hardware and is licensed under the CERN OHL v.1.1. (<https://ohwr.org/cernohl>). This documentation is distributed WITHOUT ANY EXPRESS OR IMPLIED WARRANTY, INCLUDING OF MERCHANTABILITY, SATISFACTORY QUALITY AND FITNESS FOR A PARTICULAR PURPOSE. Please see the CERN OHL v.1.1 for applicable conditions.

