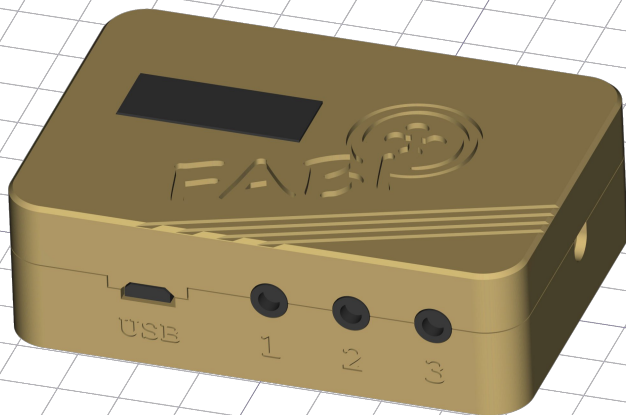




# Construction Manual



# Welcome to the FABI

## Construction Manual

This manual covers detailed step-by-step instructions for building the FABI alternative input system.

As additional tools you will need:

- a soldering iron with a fine tip
- sharp side-cutting pliers
- a slotted screwdriver
- optionally a PCB holder

The required materials are:

- tin-solder (small diameter)
- adhesive tape (Scotch tape)

## Legend



Solder / do not solder



Clip / do not clip with pliers



Fix / do not fix with tape



Attention: orientation of this part is important!



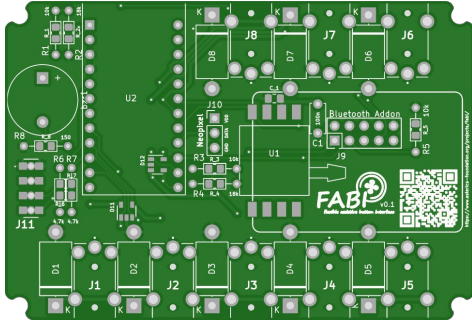
This part is done in this step



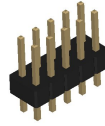
Part number for this step  
(see part overview on page 3)

# Part Overview - Basic Parts

1

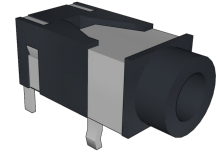


2



4

8x



3



5

8x



6

200R  
either 200R or 180R  
in your kit  
180R



7

5x 10k

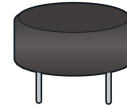


8

2x 18k

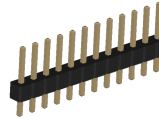


10

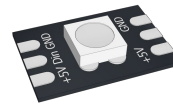


11

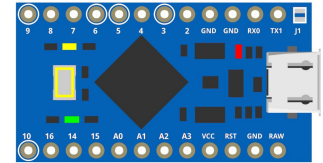
2x



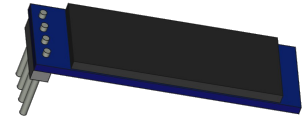
9



12



13



# Part Overview - Case

14



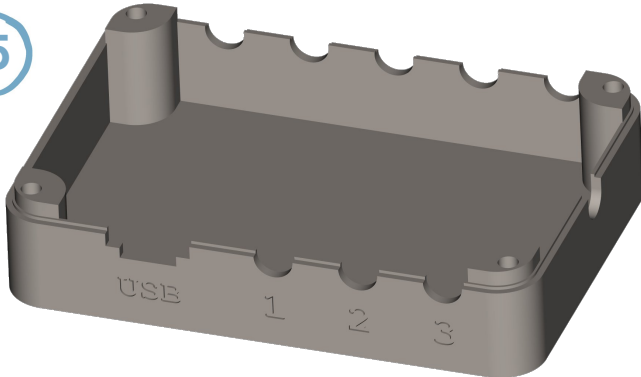
16

4x

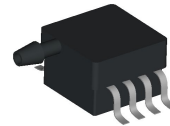


M3 x 10mm

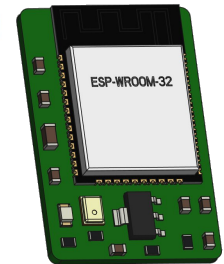
15



17

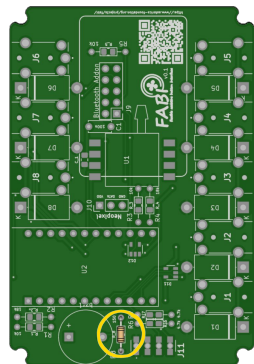


18



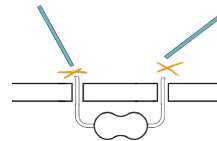
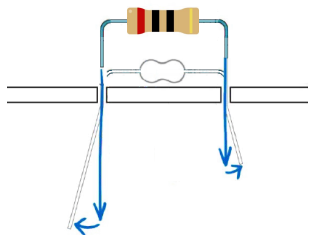
BT - AddOn

1

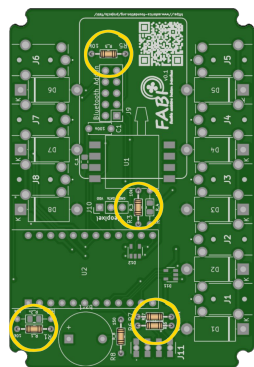


6

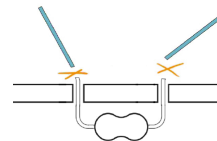
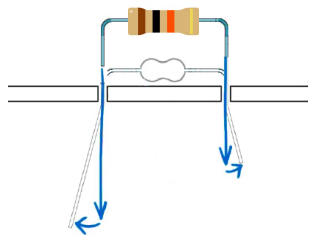
1x 200/180R



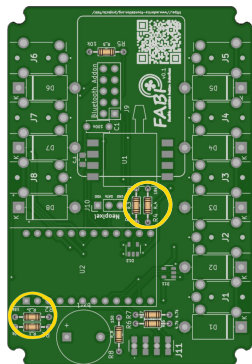
7



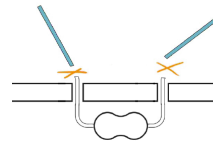
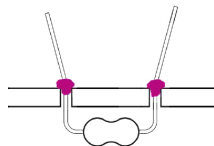
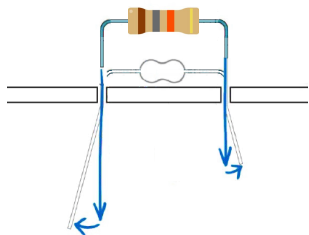
5x 10k



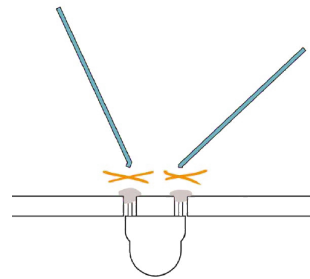
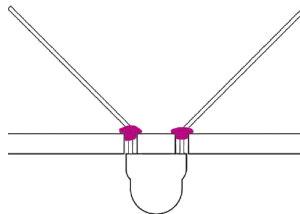
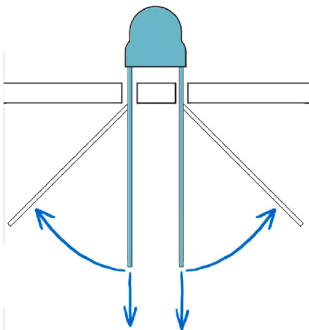
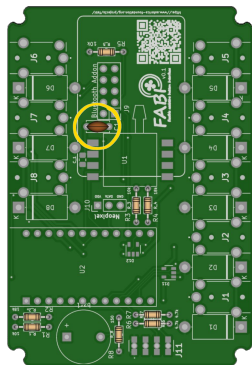
8



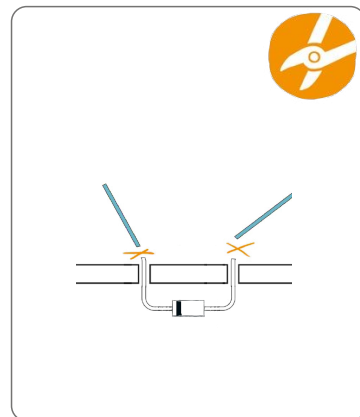
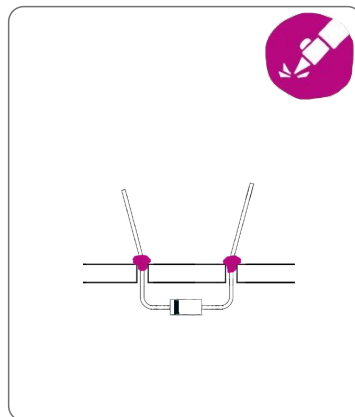
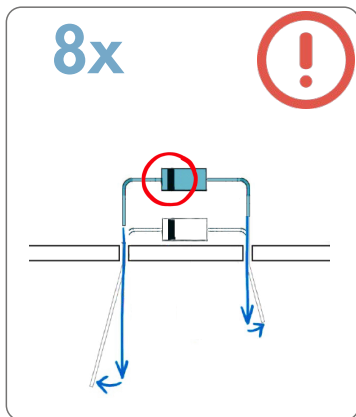
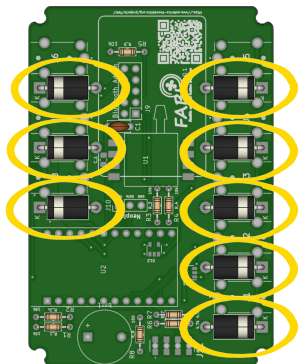
2x 18k



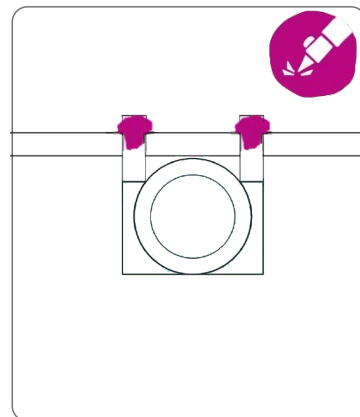
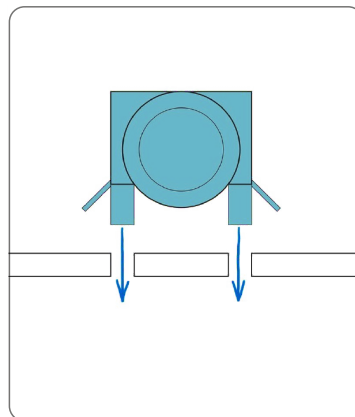
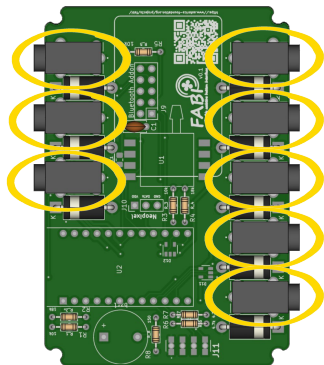
3



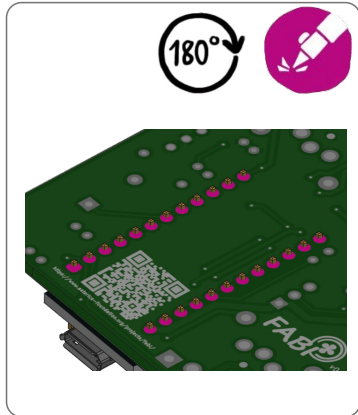
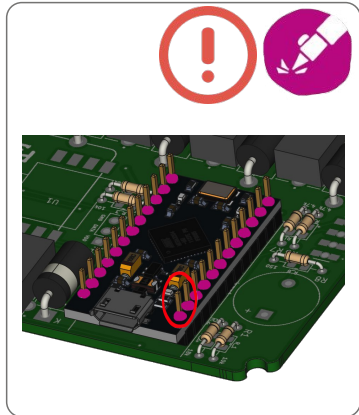
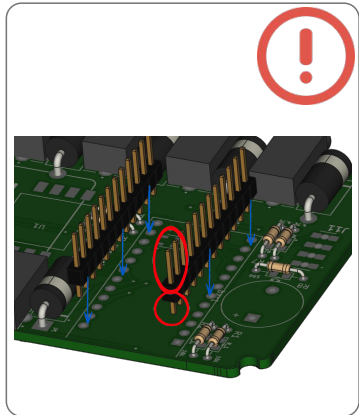
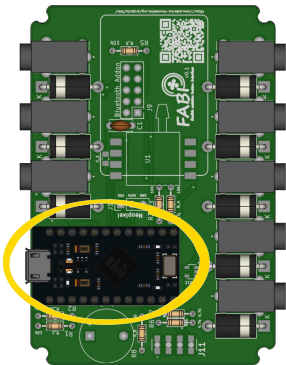
5



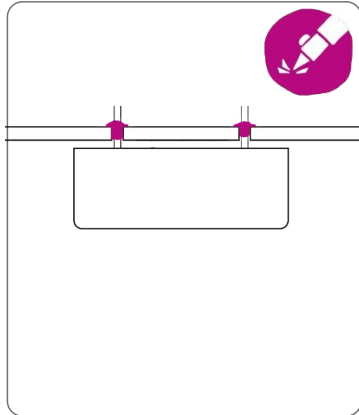
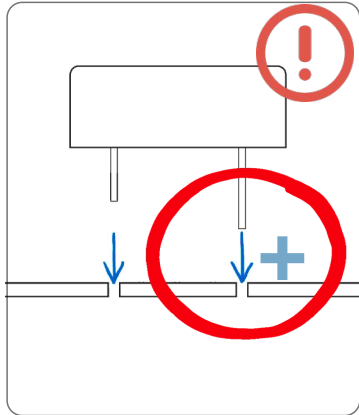
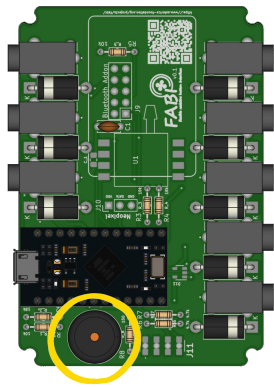
4



11 12

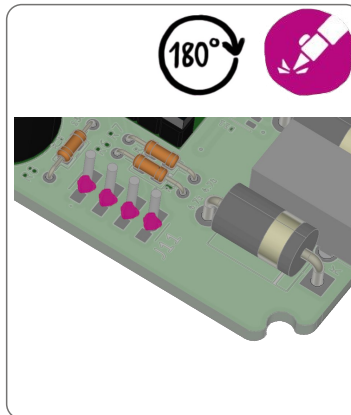
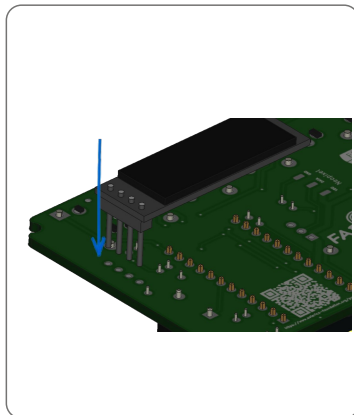
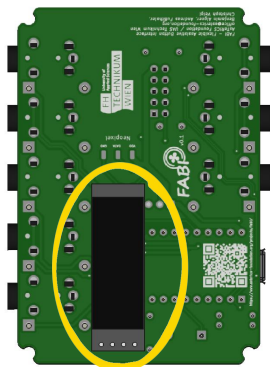


180° 10



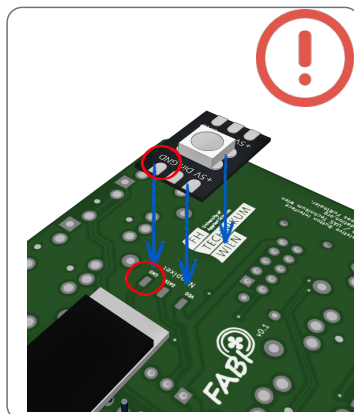


13

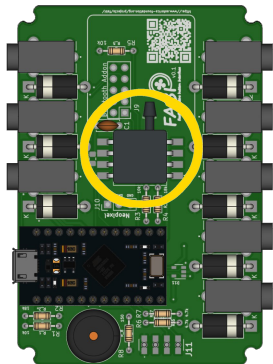


180°

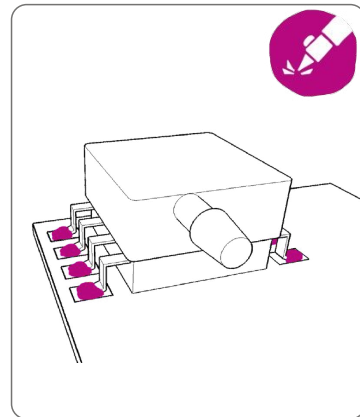
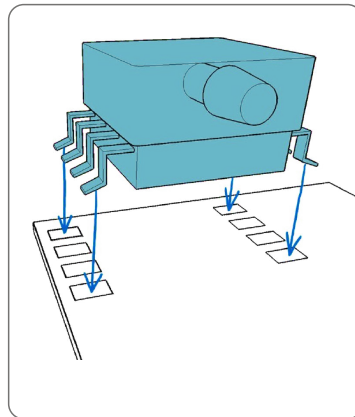
9



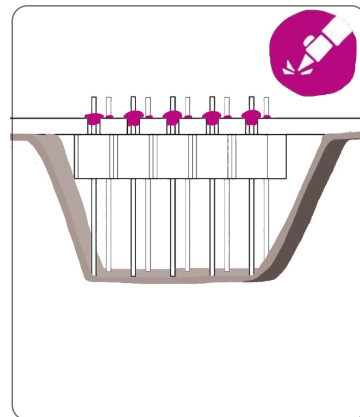
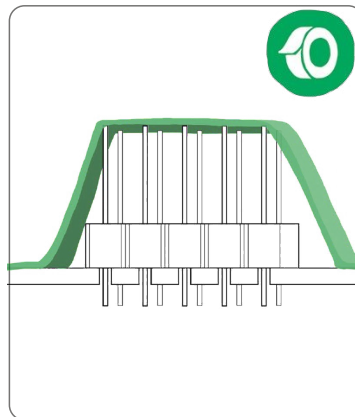
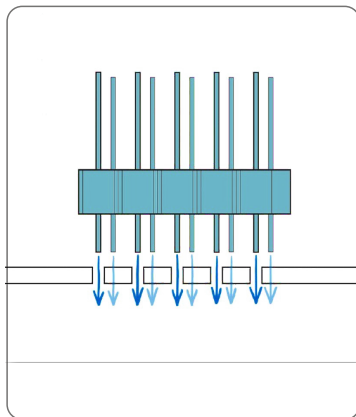
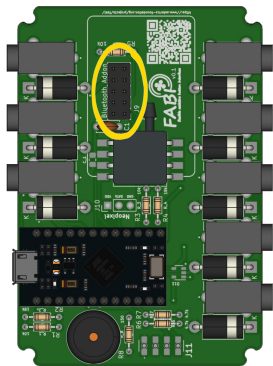
17



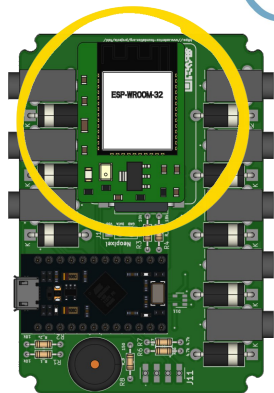
optional



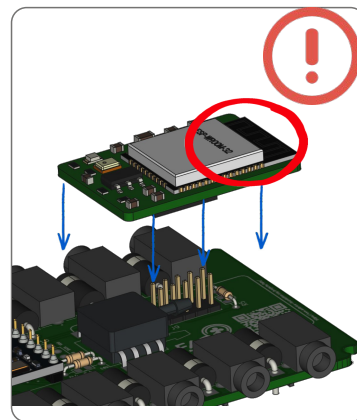
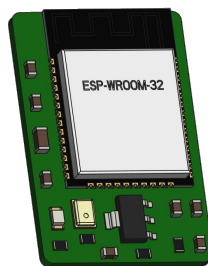
10



18

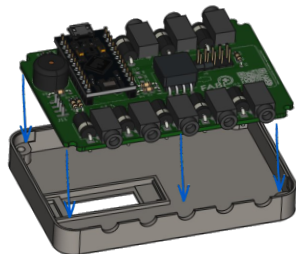
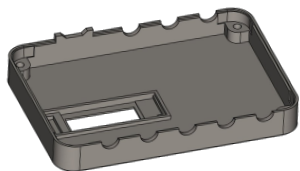


optional

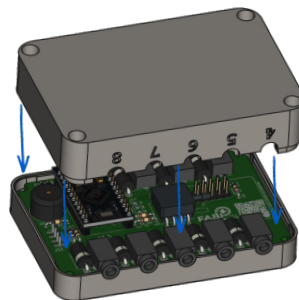


14

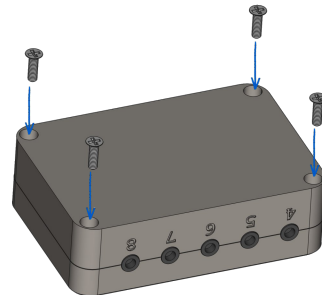
180°



15



16





Copyright 2021, AsTeRICS Foundation, CC-BY-SA 3.0  
office@asterics-foundation.org

Acknowledgements:

Futura fonts by [www.onlinewebfonts.com](http://www.onlinewebfonts.com) (CC BY 3.0)

Exclamation mark icon made by Pixel Buddha from  
[www.flaticon.com](http://www.flaticon.com)

Illustrations based on work of Moritz Schwarzl  
([moritz.schwarzl@gmx.at](mailto:moritz.schwarzl@gmx.at))

and Fritzing parts.