



MAYOR JIM PATTERSON

MEDIA RELEASE

August 11, 1999

Contact: Nicole DiBuduo
Office of the Mayor
498-2797

FRESNO POLICE FORCE SWEARS IN FIVE NEW LIEUTENANTS, TWELVE NEW SERGEANTS AND ONE NEW POLICE OFFICER AT CITY HALL CEREMONY

FIRST SIX MONTHS OF 1999 SHOW CONTINUING DRAMATIC DECLINES IN CRIME

At a ceremony at city hall today five new lieutenants, twelve police sergeants, and one new police officer were sworn in. The strength of the Fresno Police Department is at an all-time record high of 693 sworn officers. At the ceremony, Mayor Patterson released the crime trends for the first six months of 1999.

"I am particularly pleased to see gun violence continuing its rapid decline. With enough officers and tough laws, the people of Fresno are becoming safer all the time," the mayor stated.

The dramatic declines in gun related deaths since 1994 show a 71% reduction in assaults with firearms, 78% reduction in homicides with firearms, and a 74% reduction in robberies with firearms. In addition, auto theft has shown an overall decrease of 70% over that same period.

"Several factors have led to Fresno's success in reducing crime," the mayor

CITY OF FRESNO

CITY HALL • 2600 FRESNO STREET • FRESNO, CALIFORNIA 93721-3600 • (559) 498-1560 • FAX (559) 488-1015

announced. "The Police Department is at an all time record high number of sworn officers serving the city, the officers are backed up by Skywatch helicopter air support, new technology, tough laws like Three Strikes and 10-20-Life, and partnerships with other law enforcement agencies and community groups."

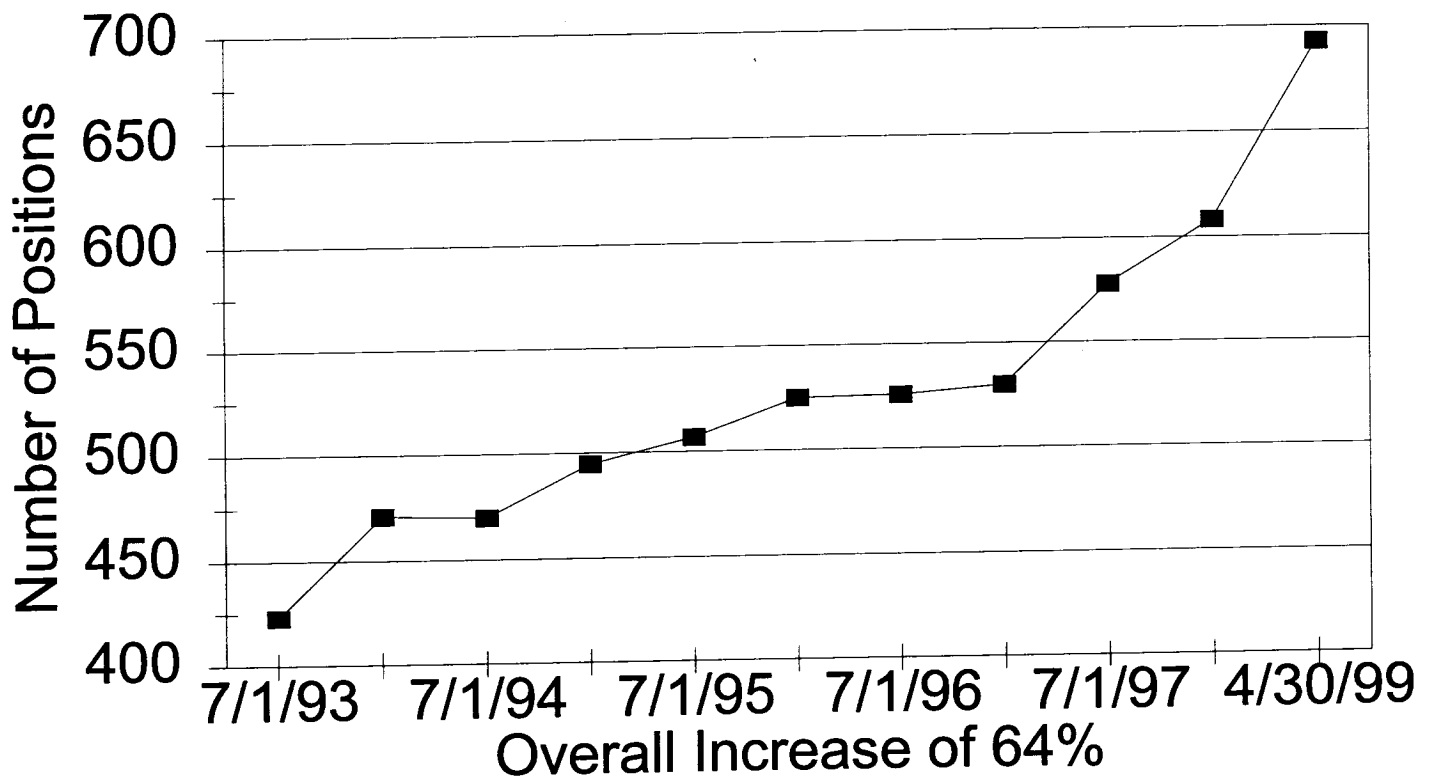
The Mayor noted that these impressive and steady declines continue a trend begun in 1994. Overall decreases since 1994 through the year end, show the following:

- Auto theft down 70%;
- Willful homicide down 70%;
- Property crimes down 58%;
- Violent crime down 30%; and
- Total crimes down 51%.

Attached are graphs depicting these declines from Police Department statistics as well as the latest crime data on gun violence and auto theft in Fresno. Also attached is a graph of the growth in Police Department personnel since 1993.

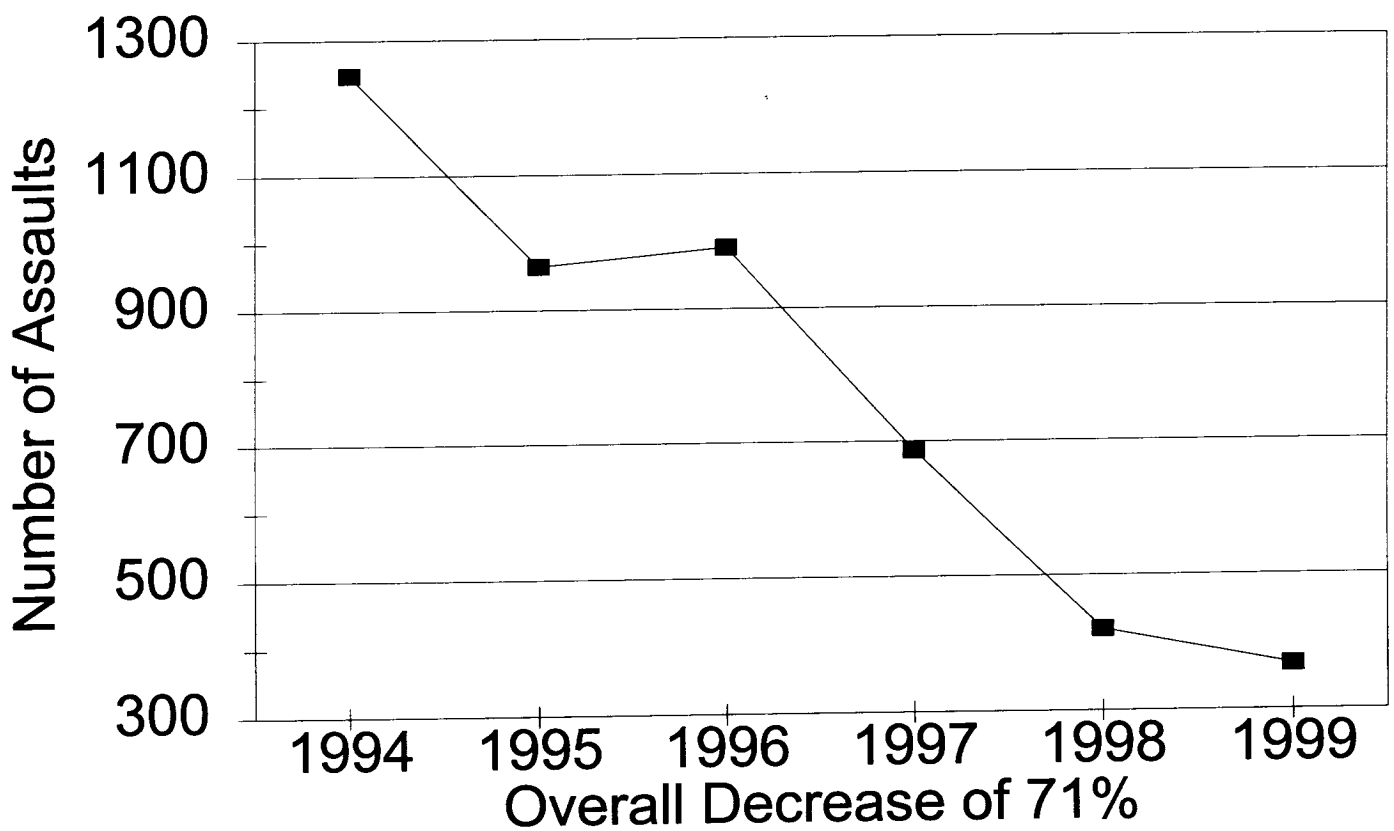
FRESNO POLICE DEPARTMENT

Number of Authorized Positions



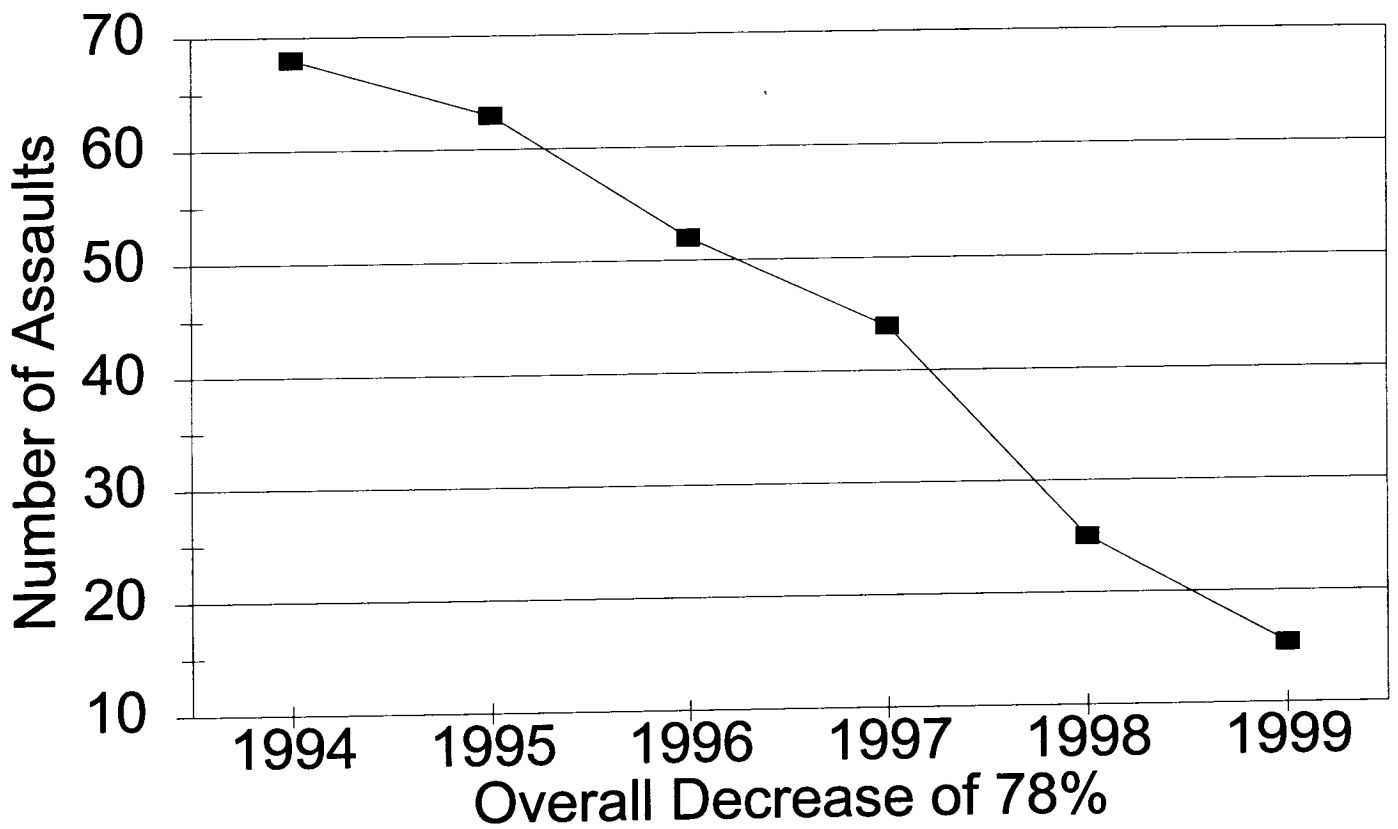
ASSAULTS WITH FIREARMS

1999 Decrease of 12.8%



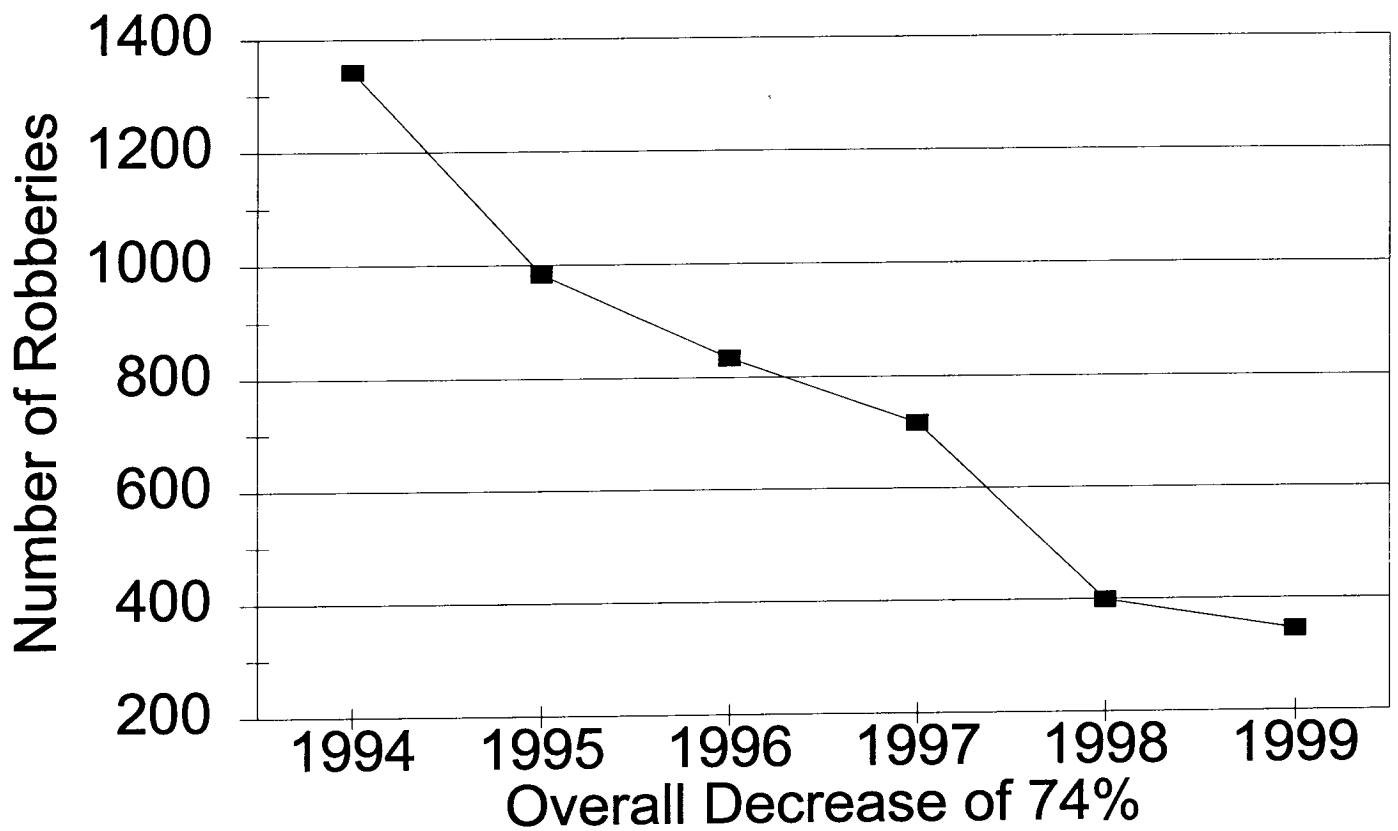
HOMICIDES WITH FIREARMS

1999 Decrease of 38.5%



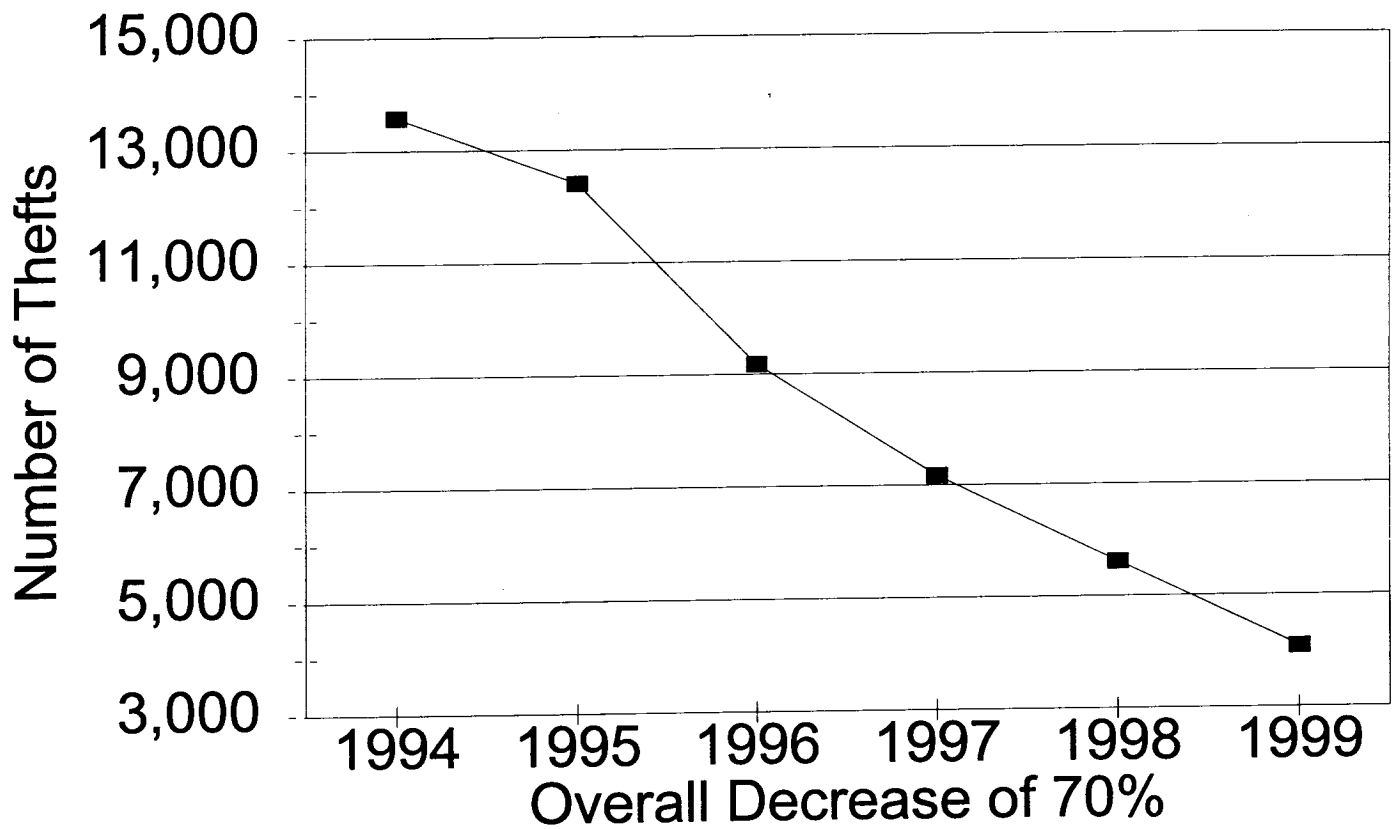
ROBBERIES WITH FIREARMS

1999 Decrease of 13.5%



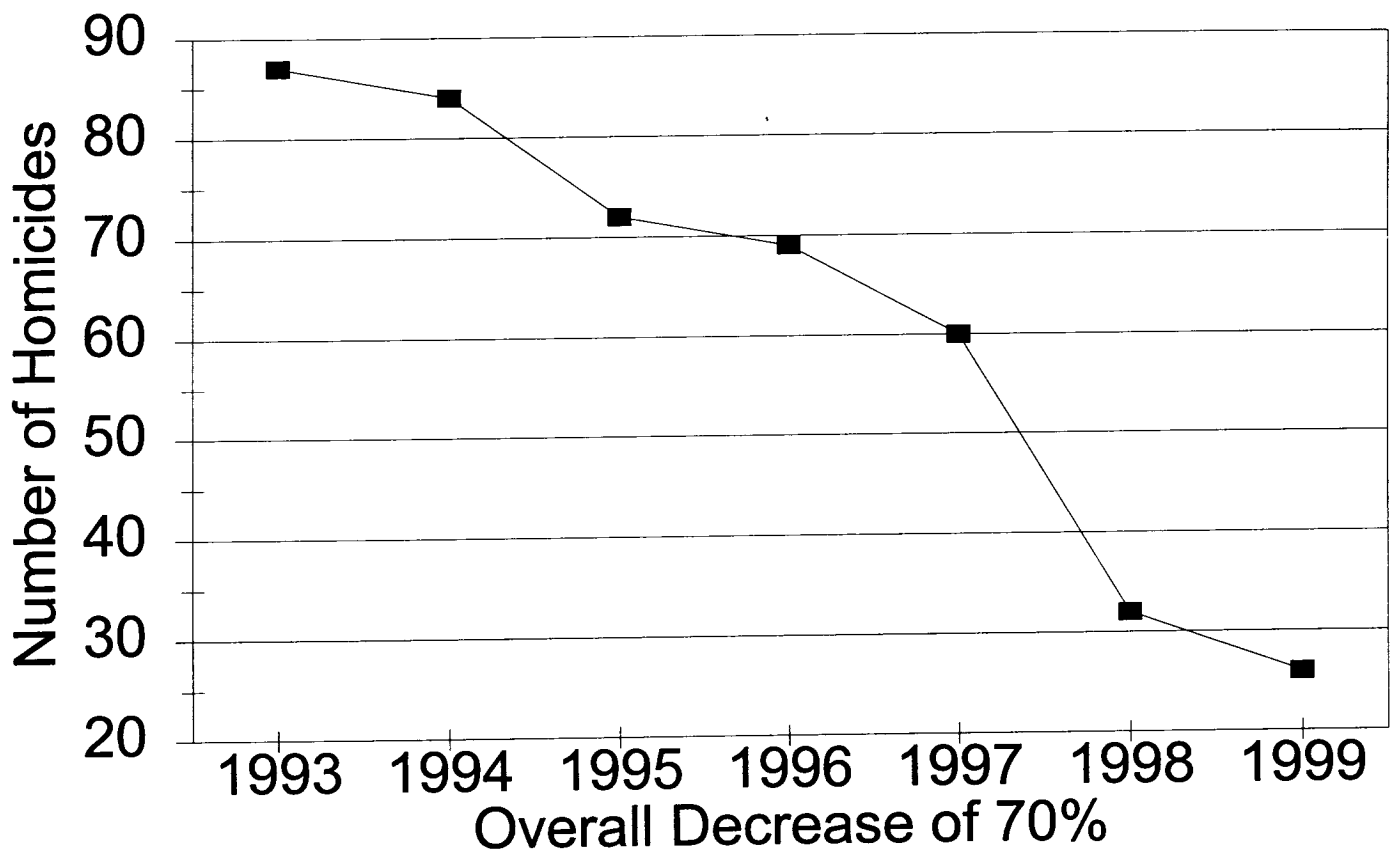
AUTO THEFT

1999 Decrease of 27.1%



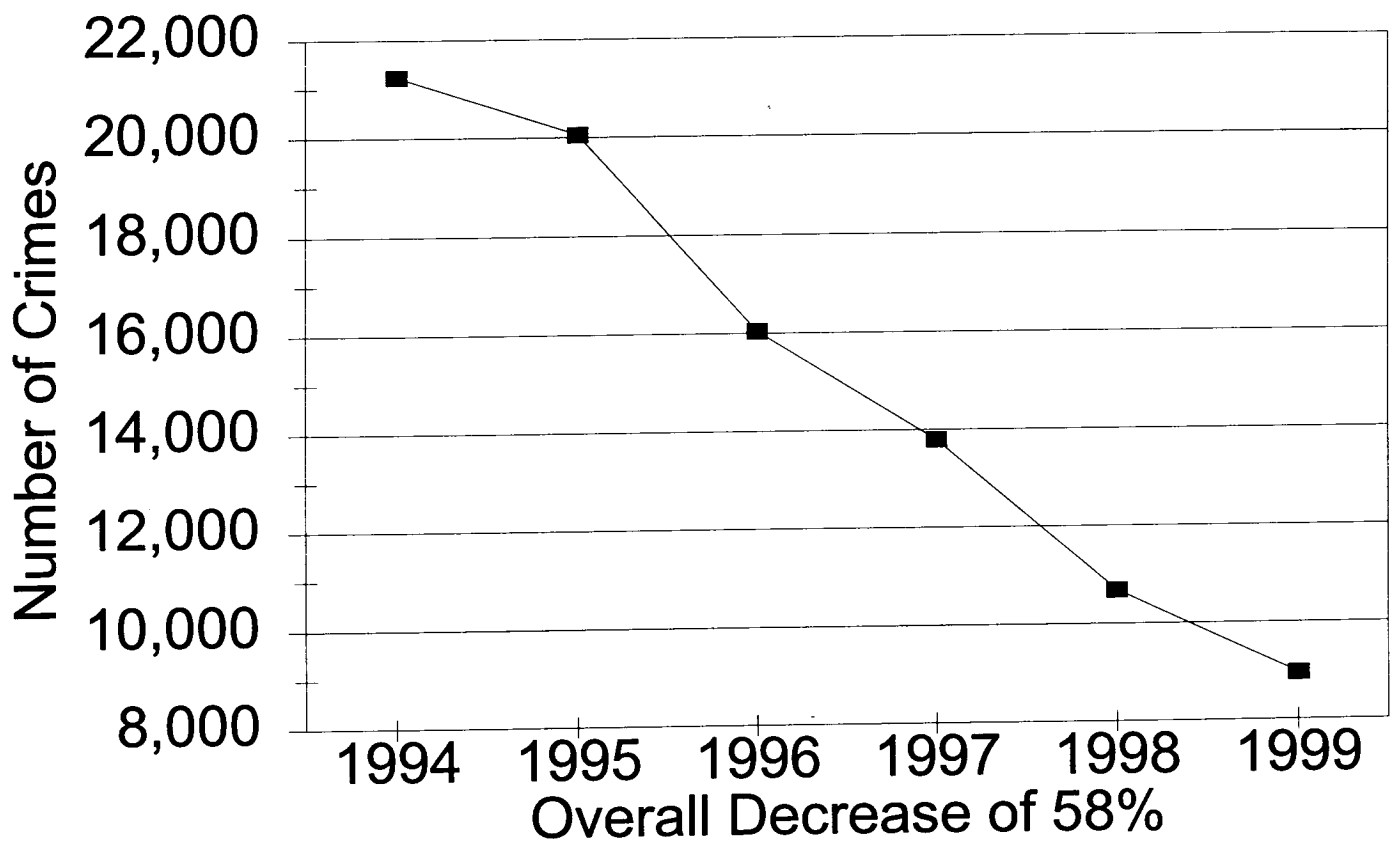
WILLFUL HOMICIDE

1999 Decrease of 18.8%



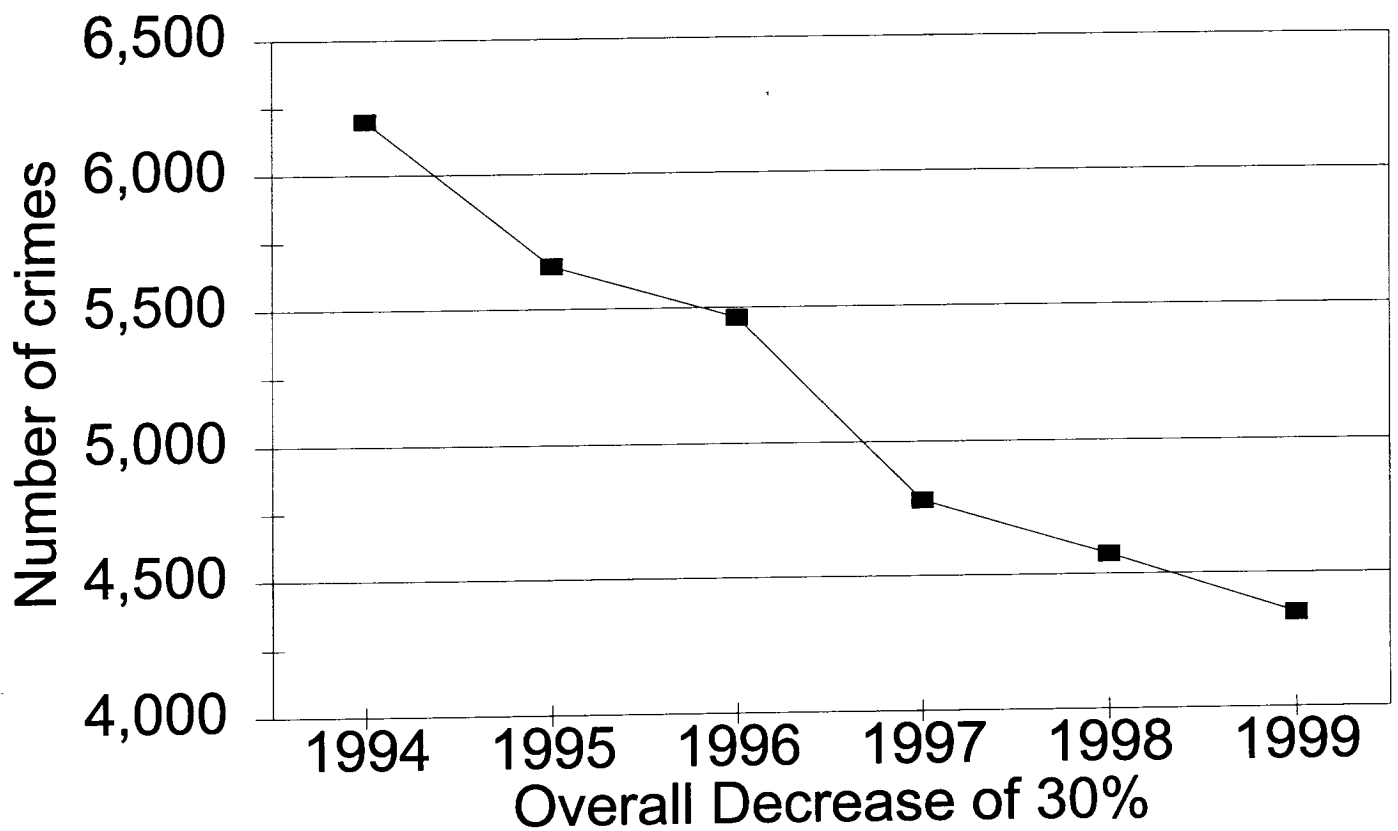
NUMBER OF PROPERTY CRIMES

1999 Decrease of 16.2%



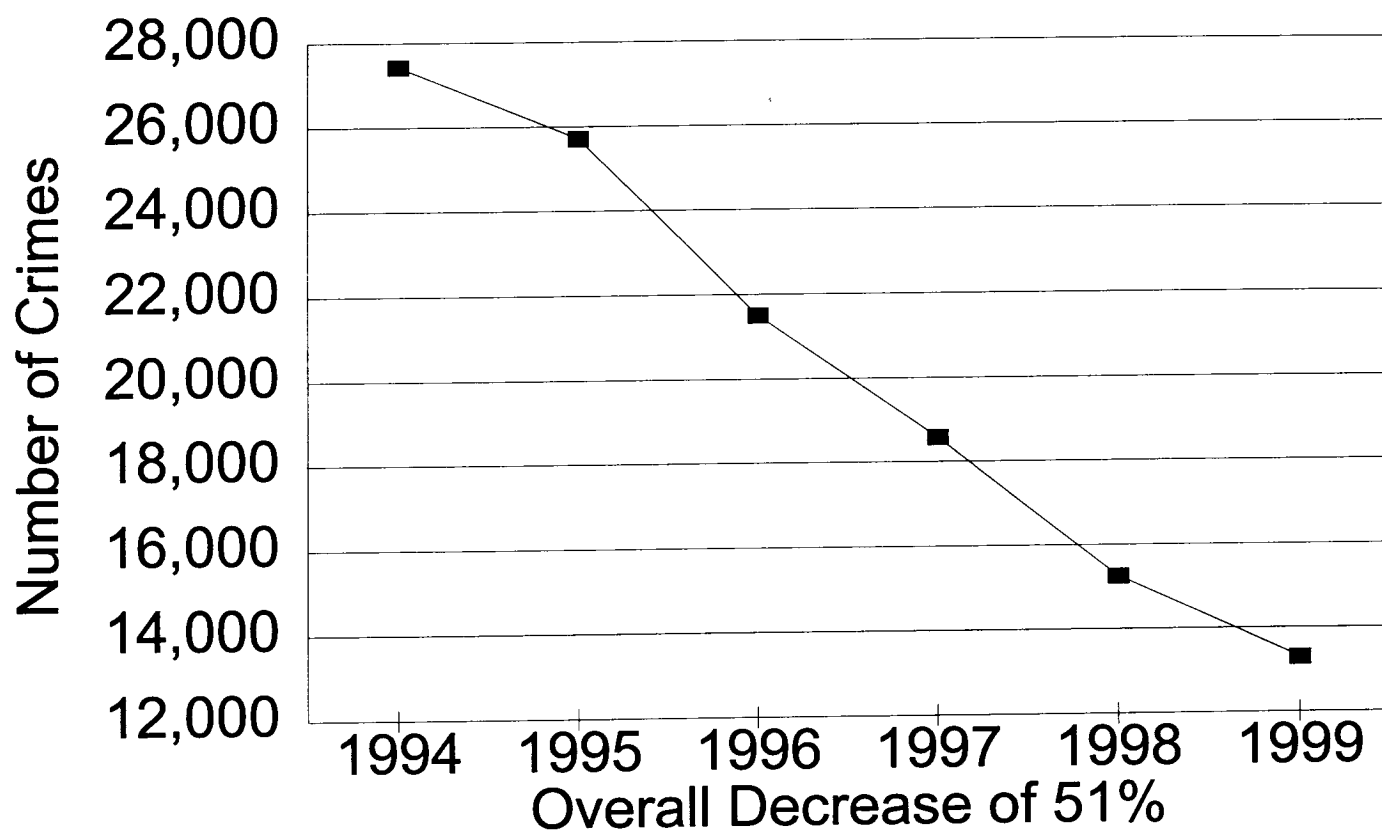
NUMBER OF VIOLENT CRIMES

1999 Decrease of 4.9%



TOTAL CRIMES

1999 Decrease of 12.8%



Citywide Totals

June	1998			Calendar Year			1999	% Change In Total
Month vs Month	Total	Cleared	C/Rate				Cleared	
Violent Crime Offenses	399	224	56.1%				349	-12.5%
Willful Homicide	0	1	NA				0	0.0%
Forcible Rape	15	9	60.0%				14	-6.7%
Robbery	123	37	30.1%				96	-22.0%
Agg. Assaults	261	177	67.8%				239	-8.4%
Property Crime Offenses	2228	350	15.7%				2150	-3.5%
Burglary	407	41	10.1%				364	-10.6%
Larceny/Theft	1371	272	19.8%				1338	-2.4%
Motor Vehicle Theft	376	31	8.2%				356	-5.3%
Arson	74	6	8.1%				92	24.3%
Negligent Manslaughter	0	0	NA				0	0.0%
Total Part I Crimes	2927	574	21.9%				2499	-4.9%
FBI Crime Index (-Arson)	2553	568	22.2%				2407	-5.7%
CCI Calif Crime Index	1182	296	25.0%				1069	-9.6%
Arrests	3658						3932	7.5%
Felony	911						871	-4.4%
Misdemeanors	2636						2944	11.7%
Status (Delinquents)	111						117	5.4%
CFS	36066						31738	-12.0%
Calls Handled by Areas	33259						28797	-13.4%
Other Calls	897						1003	11.8%
Cancellations	1910						1938	1.5%

January thru June

	1998			Calendar Year			1999	% Change In Total
Year to Date	Total	Cleared	C/Rate				Cleared	
Violent Crime Offenses	2134	1155	54.1%				2030	-4.9%
Willful Homicide	16	9	56.3%				13	-18.8%
Forcible Rape	84	63	75.0%				66	-21.4%
Robbery	732	192	26.2%				611	-16.5%
Agg. Assaults	1302	801	68.4%				1340	2.9%
Property Crime Offenses	15608	2209	14.2%				13086	-16.2%
Burglary	2794	309	11.1%				2374	-15.0%
Larceny/Theft	9291	1618	17.4%				8057	-13.3%
Motor Vehicle Theft	3164	250	7.9%				2307	-27.1%
Arson	359	32	8.9%				348	-3.1%
Negligent Manslaughter	0	0	NA				0	0.0%
Total Part I Crimes	17742	3364	19.0%				15116	-14.8%
FBI Crime Index (-Arson)	17383	3332	19.2%				14768	-15.0%
CCI Calif Crime Index	8092	1714	21.2%				6711	-17.1%
Arrests	21204						22899	8.0%
Felony	5415						5115	-5.5%
Misdemeanors	15446						17405	12.7%
Status (Delinquents)	343						379	10.5%
CFS	189057						182333	-3.6%
Calls Handled by Areas	174757						168120	-3.8%
Other Calls	3303						3834	16.1%
Cancellations	10997						10379	-5.6%

998 vs 1999 YTD Aggravated Assaults, Homicides, & Robberies with Firearms Used.

Assaults w/Firearms	1994	1995	1996	1997	1998	1999	% Change (98-99)
January	117	79	90	60	37	38	2.7%
February	119	71	76	42	25	40	60.0%
March	106	104	89	70	42	24	-42.9%
April	81	75	92	78	35	33	-5.7%
May	96	90	67	86	55	29	-47.3%
June	98	64	96	44	27	29	7.4%
Totals	617	483	510	380	221	193	-12.7%

Homicides w/Firearms	1994	1995	1996	1997	1998	1999	% Change (98-99)
January	6	4	5	3	7	0	-100.0%
February	10	2	7	2	0	1	100.0%
March	7	6	5	3	1	2	100.0%
April	6	2	2	5	3	0	-100.0%
May	3	5	4	7	2	5	150.0%
June	6	5	5	3	0	0	ERR
Totals	38	24	28	23	13	8	-38.5%

Robberies w/Firearms	1994	1995	1996	1997	1998	1999	% Change (98-99)
January	122	78	97	81	47	26	-44.7%
February	130	75	73	63	25	41	64.0%
March	131	94	62	66	39	26	-33.3%
April	125	75	46	68	27	20	-25.9%
May	96	71	55	51	25	20	-20.0%
June	110	70	76	49	30	34	13.3%
Totals	714	483	409	378	193	167	-13.5%

Data Source: Fresno PD Statistical Unit