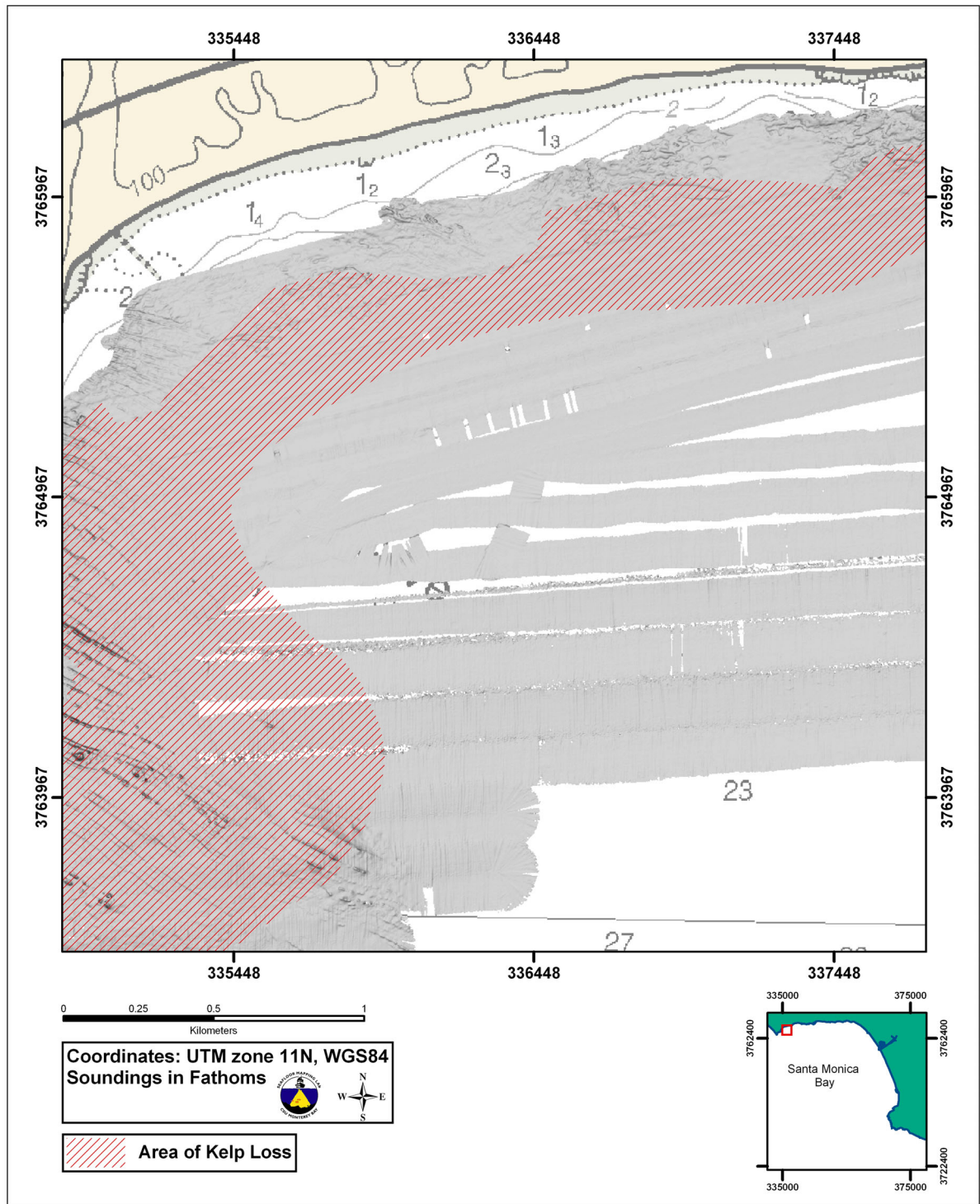
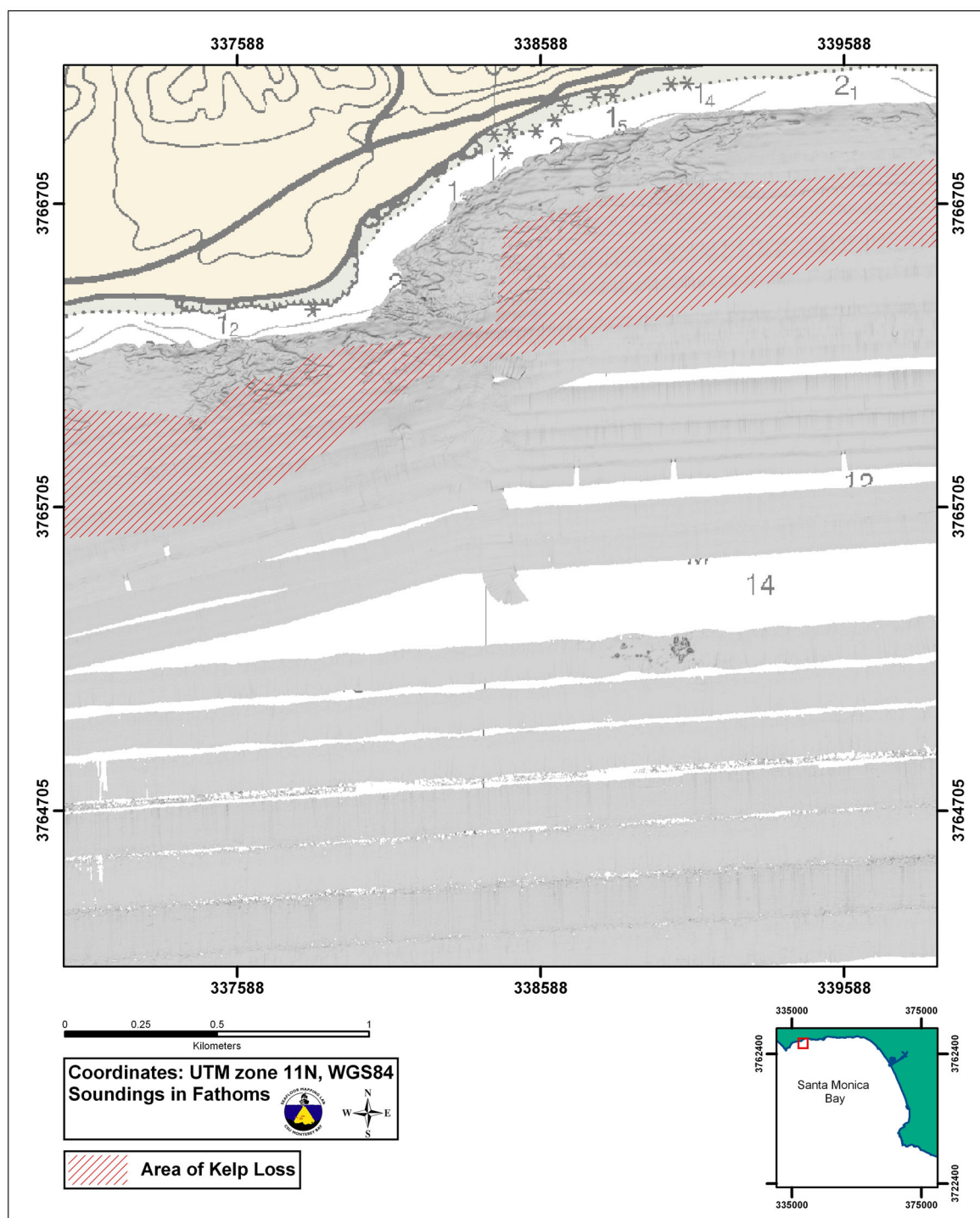


**Figure D1.** Grayscale shaded-relief multibeam image and kelp loss polygon for a portion of study area in northern SMB. A red box in inset map indicates area of main map.

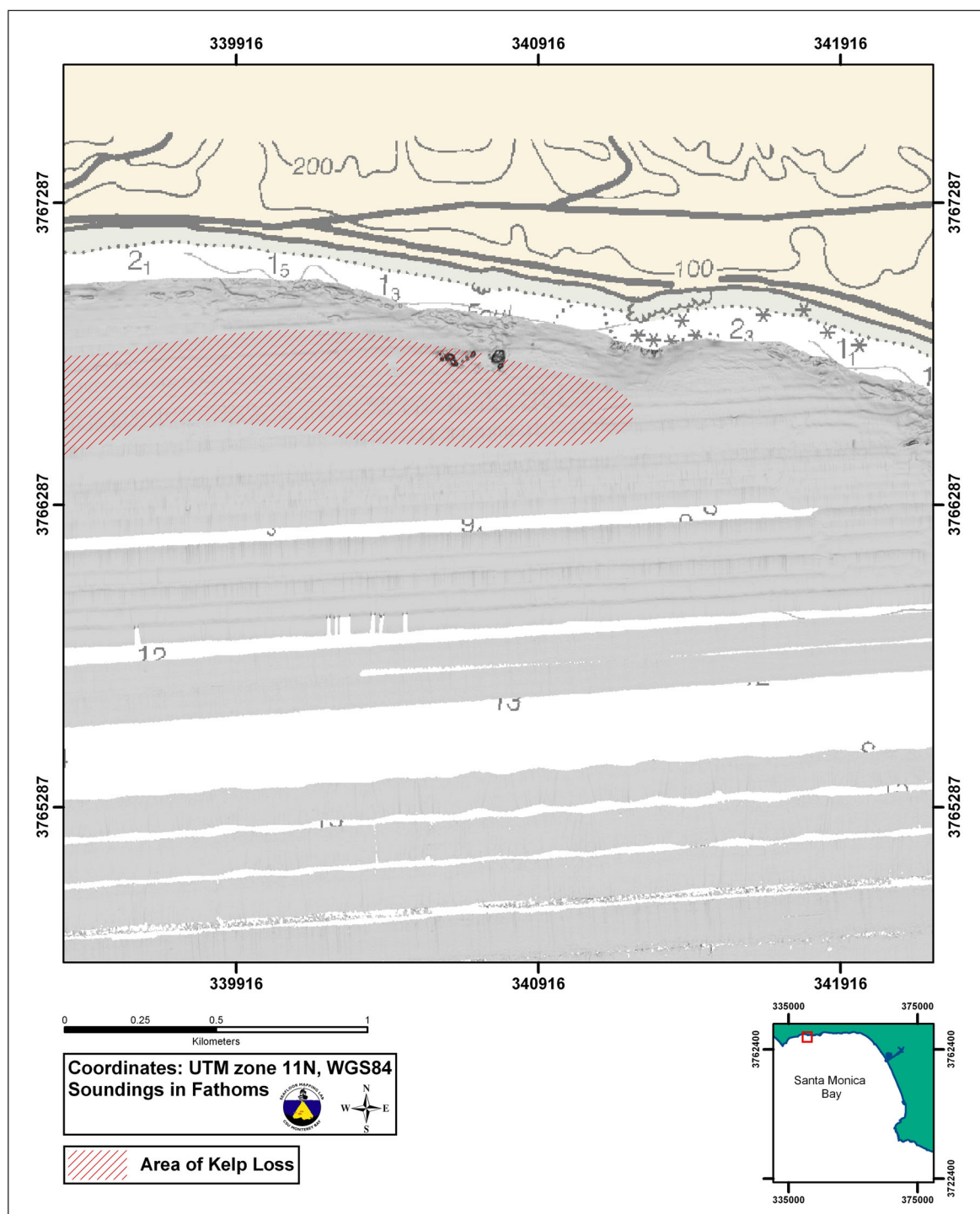


**Figure D2.** Grayscale shaded-relief multibeam image and kelp loss polygon for a portion of study area in northern SMB. A red box in inset map indicates area of main map.



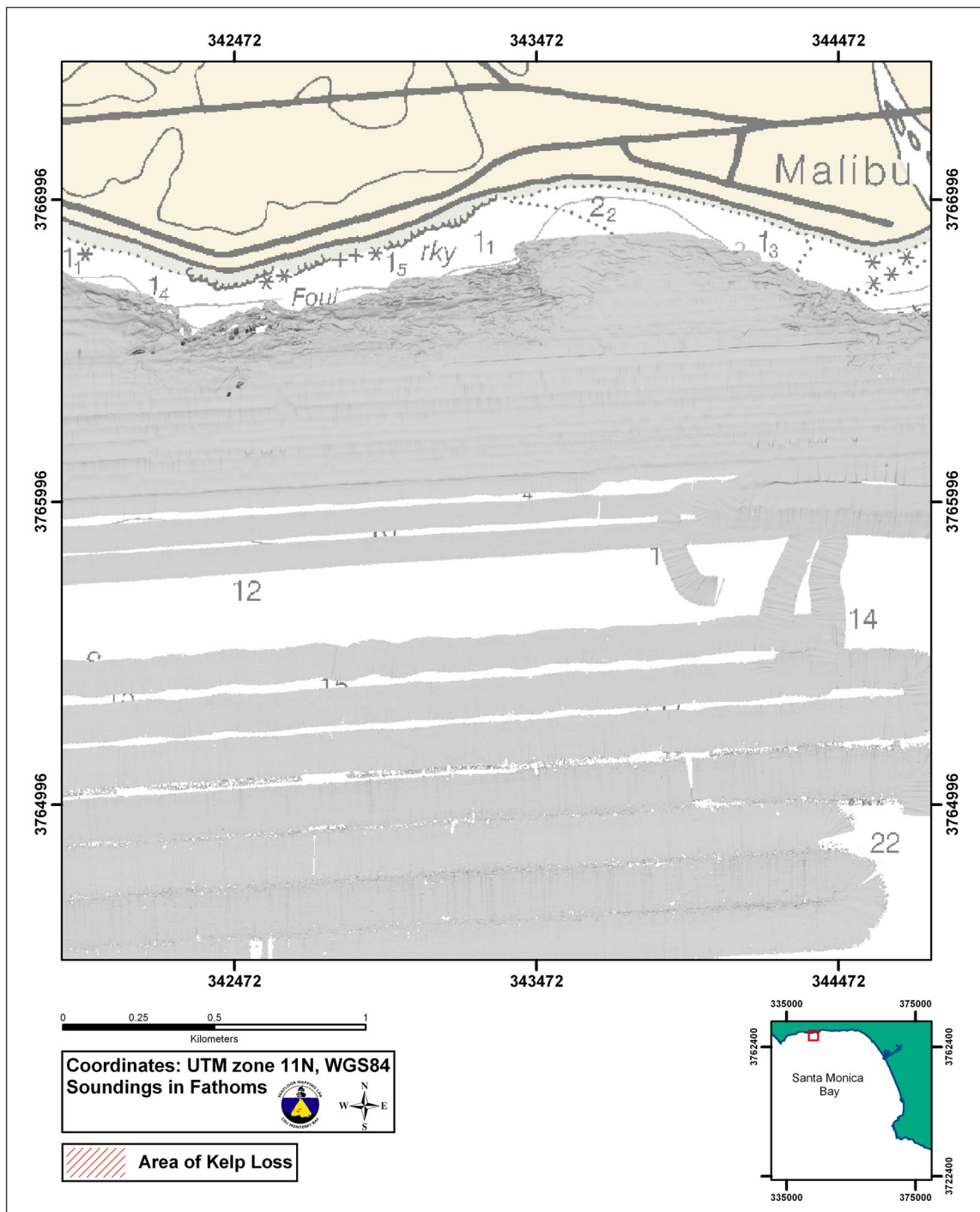


**Figure D3.** Grayscale shaded-relief multibeam image and kelp loss polygon for a portion of study area in northern SMB. A red box in inset map indicates area of main map.

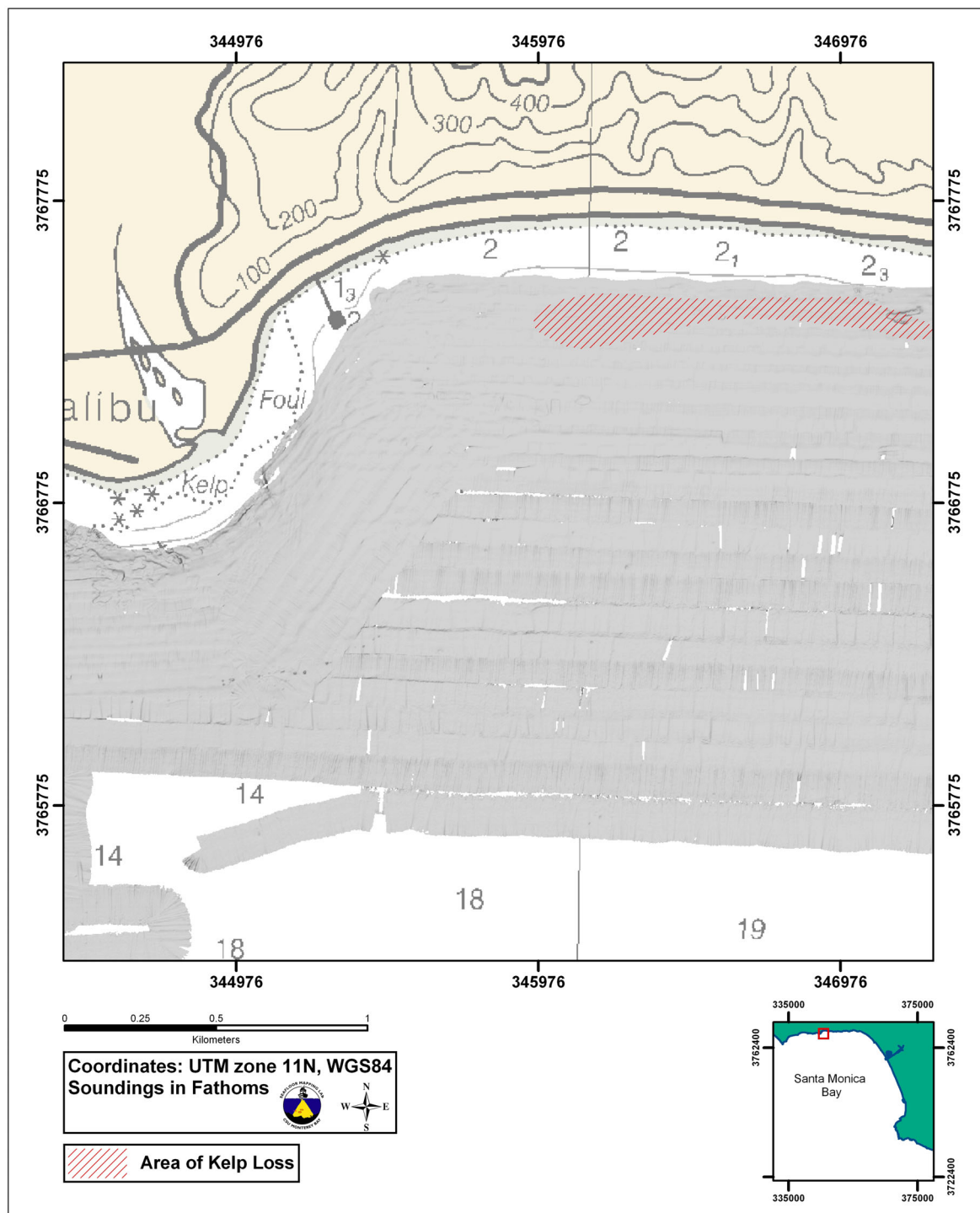


**Figure D4.** Grayscale shaded-relief multibeam image and kelp loss polygon for a portion of study area in northern SMB. A red box in inset map indicates area of main map.

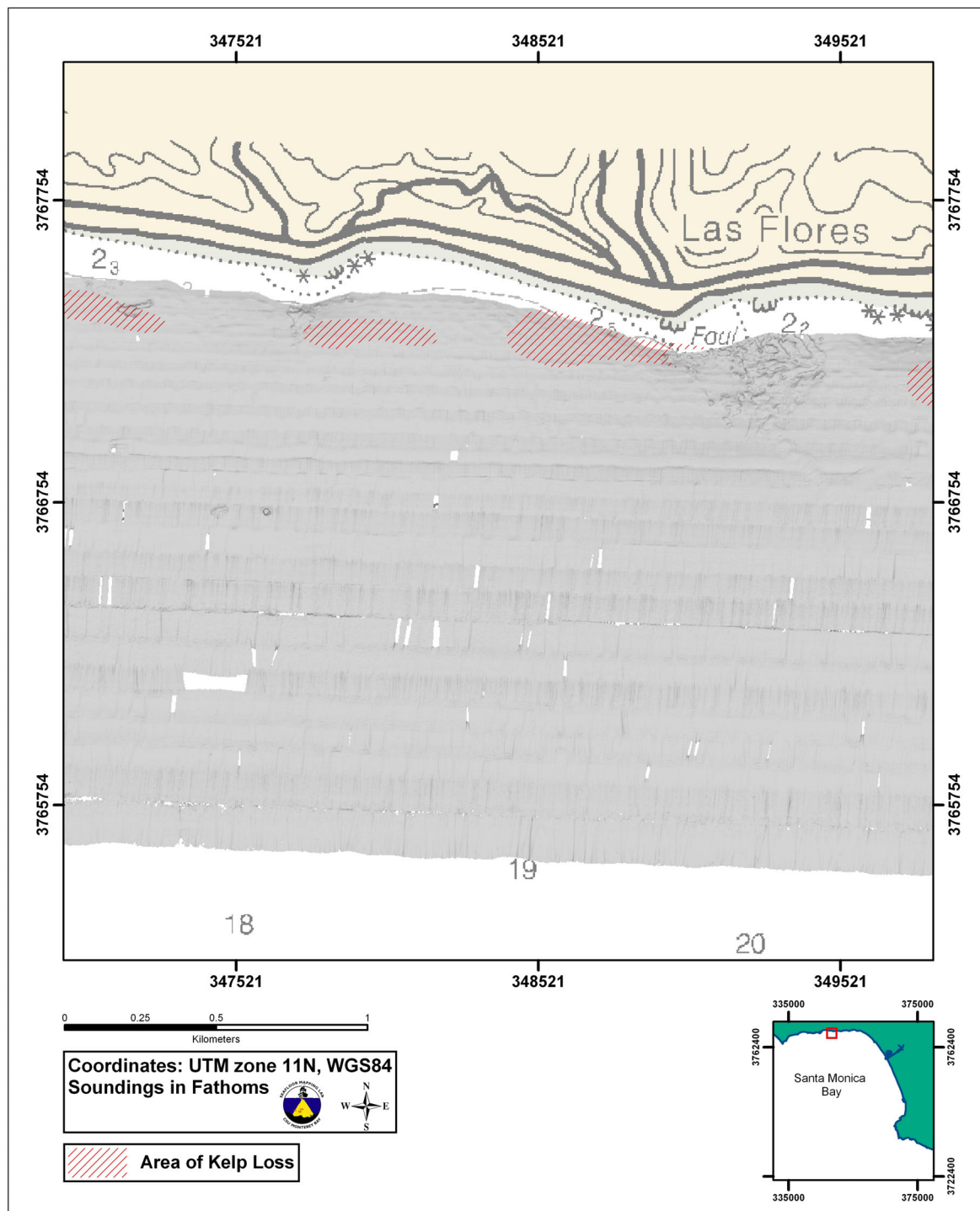




**Figure D5.** Grayscale shaded-relief multibeam image and kelp loss polygon for a portion of study area in northern SMB. A red box in inset map indicates area of main map.

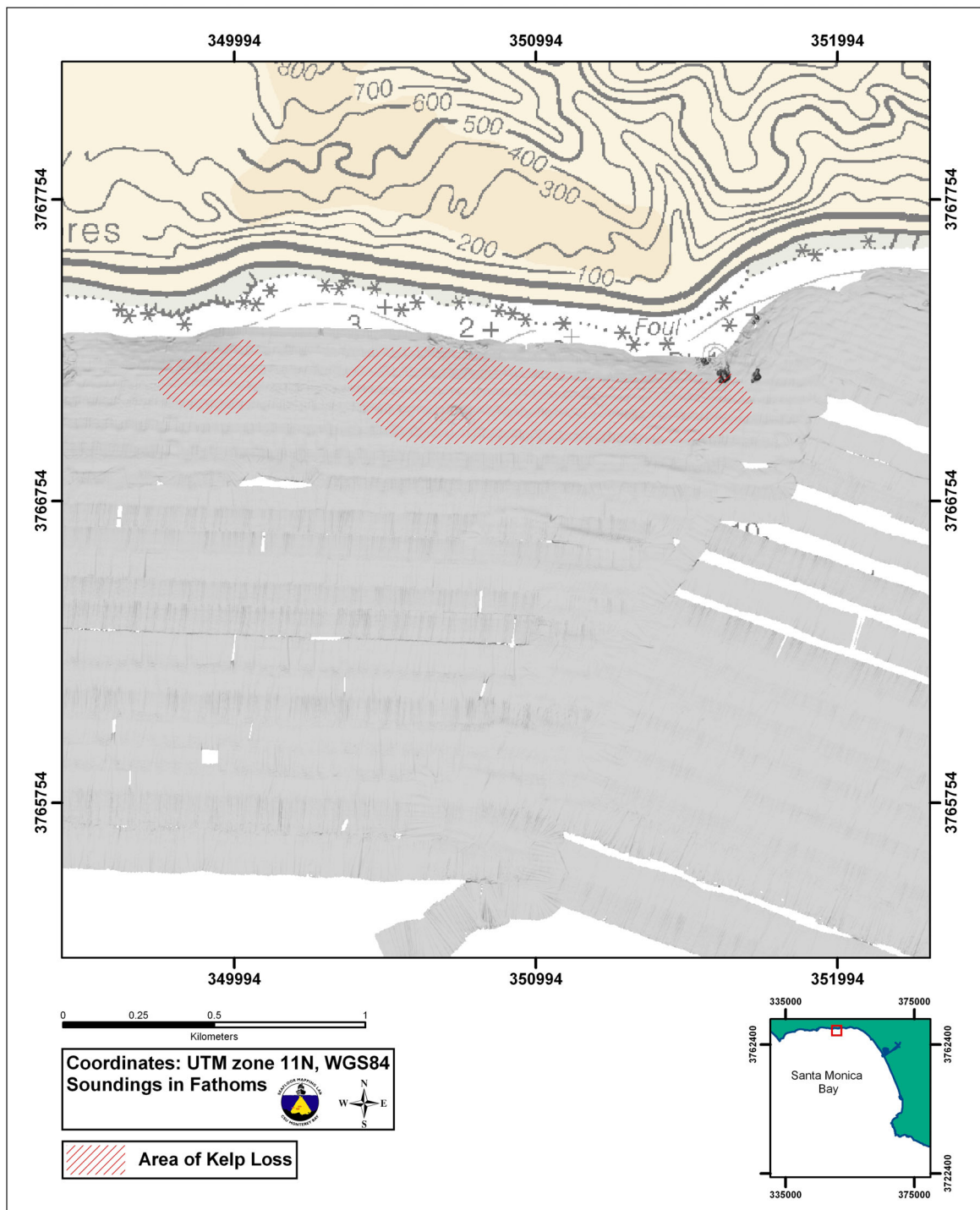


**Figure D6.** Grayscale shaded-relief multibeam image and kelp loss polygon for a portion of study area in northern SMB. A red box in inset map indicates area of main map.

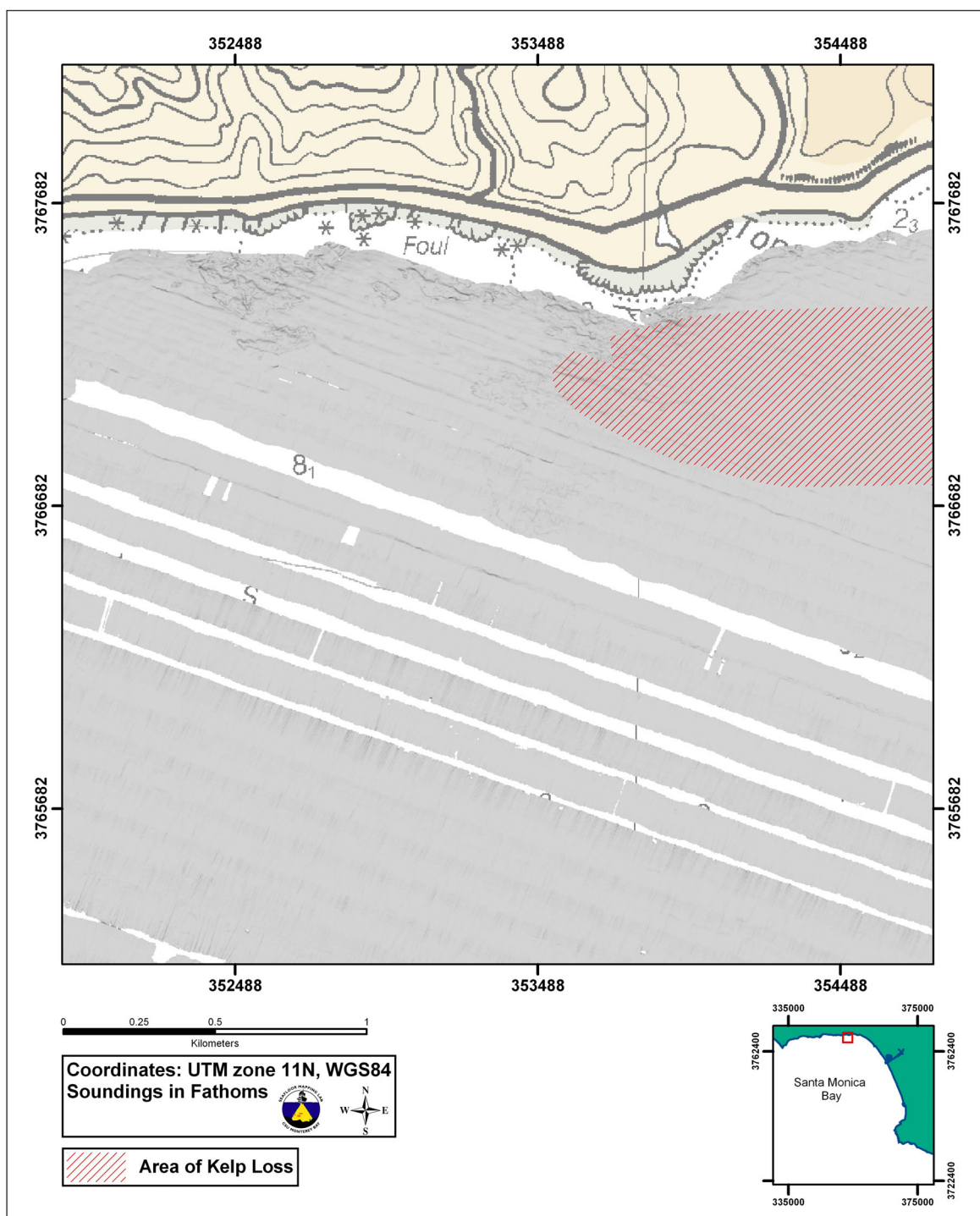


**Figure D7.** Grayscale shaded-relief multibeam image and kelp loss polygon for a portion of study area in northern SMB. A red box in inset map indicates area of main map.

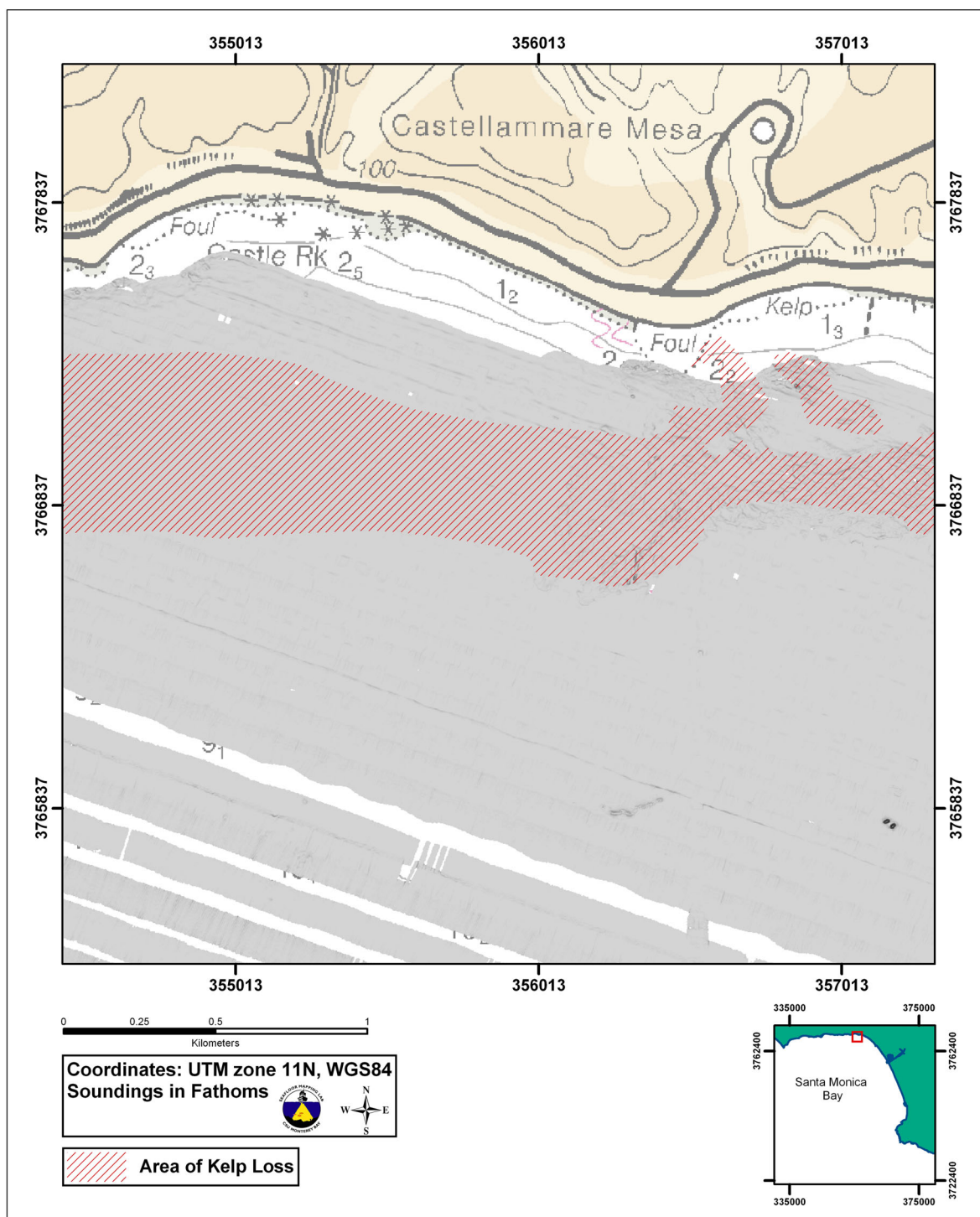




**Figure D8.** Grayscale shaded-relief multibeam image and kelp loss polygon for a portion of study area in northern SMB. A red box in inset map indicates area of main map.

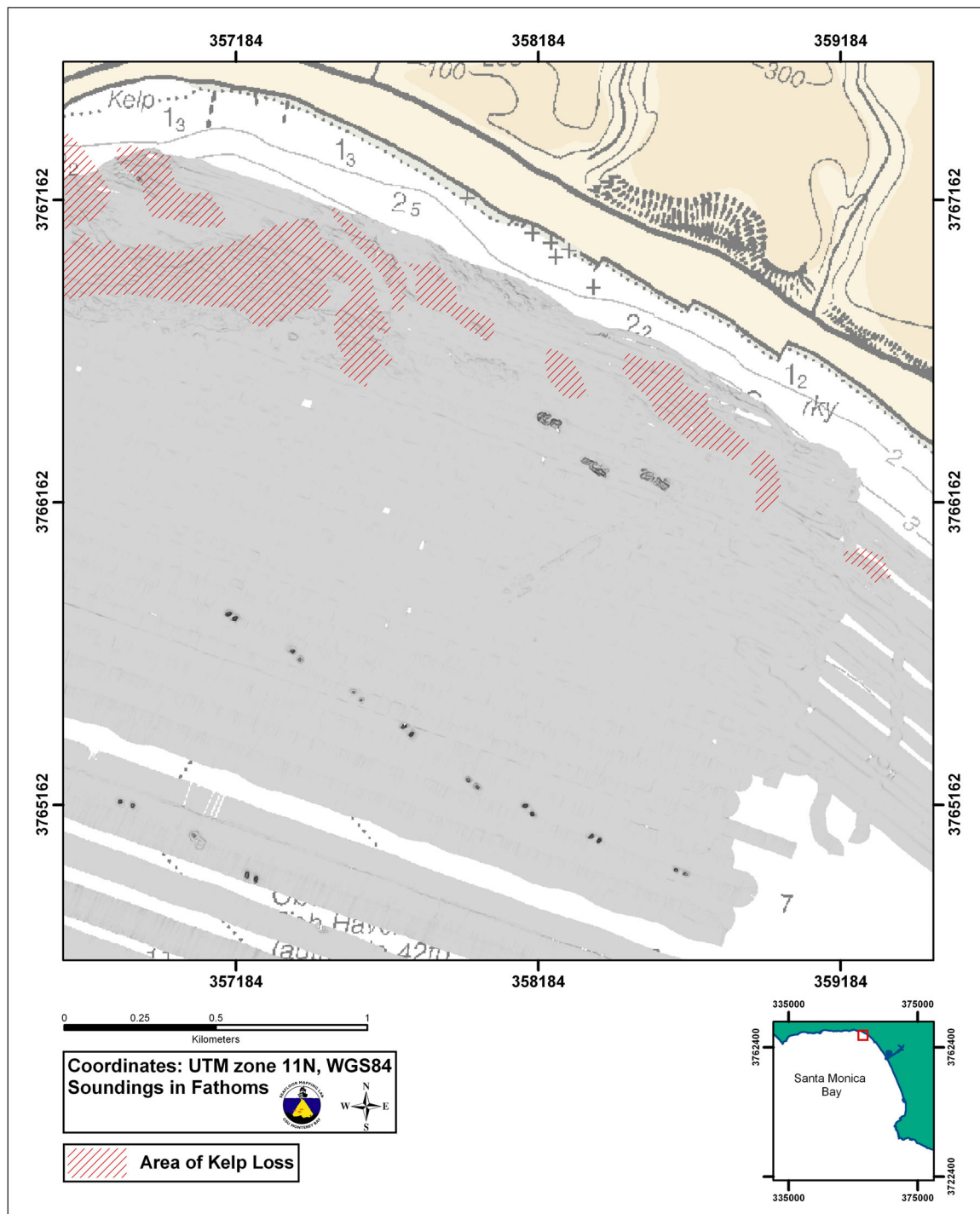


**Figure D9.** Grayscale shaded-relief multibeam image and kelp loss polygon for a portion of study area in northern SMB. A red box in inset map indicates area of main map.

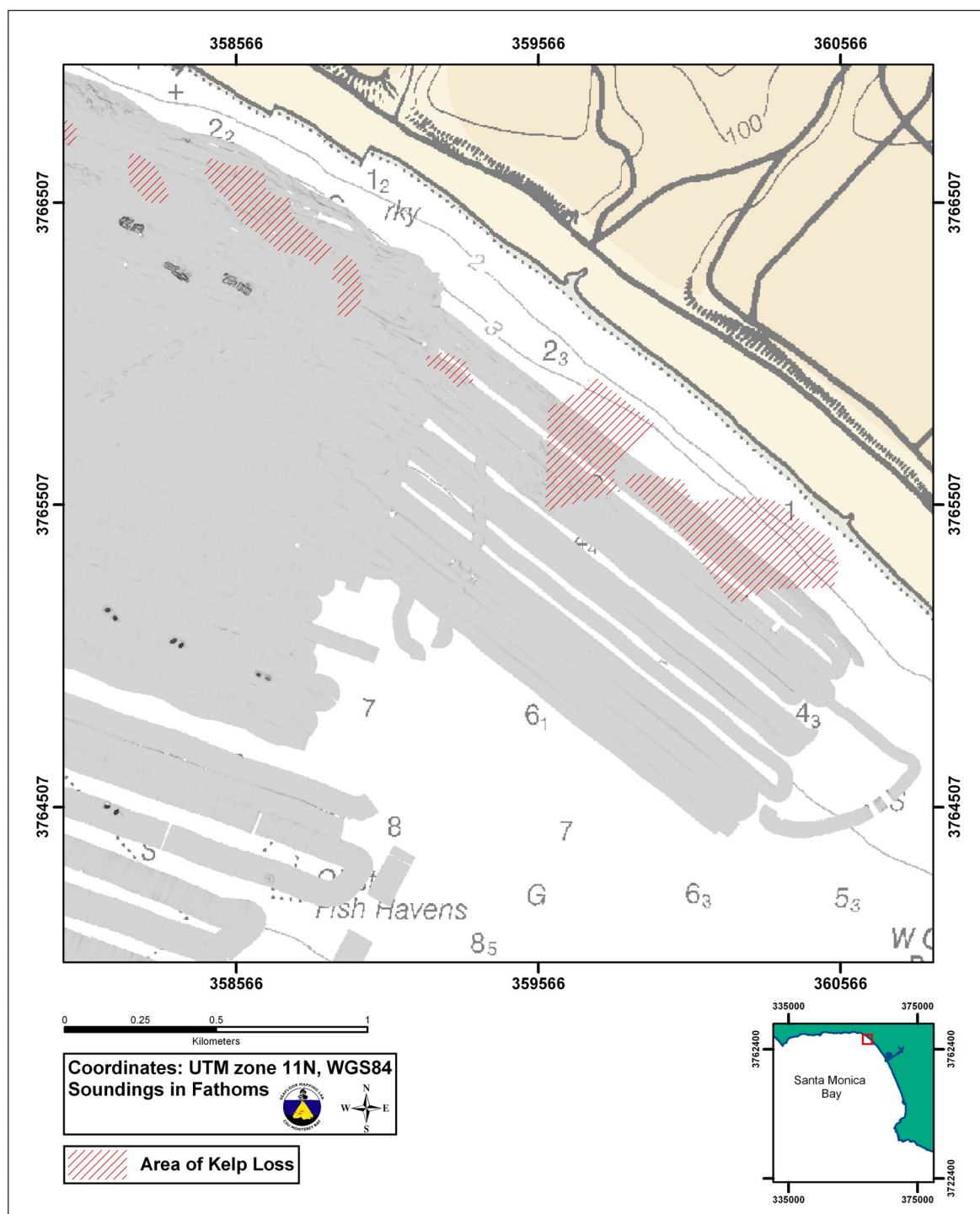


**Figure D10.** Grayscale shaded-relief multibeam image and kelp loss polygon for a portion of study area in northern SMB. A red box in inset map indicates area of main map.

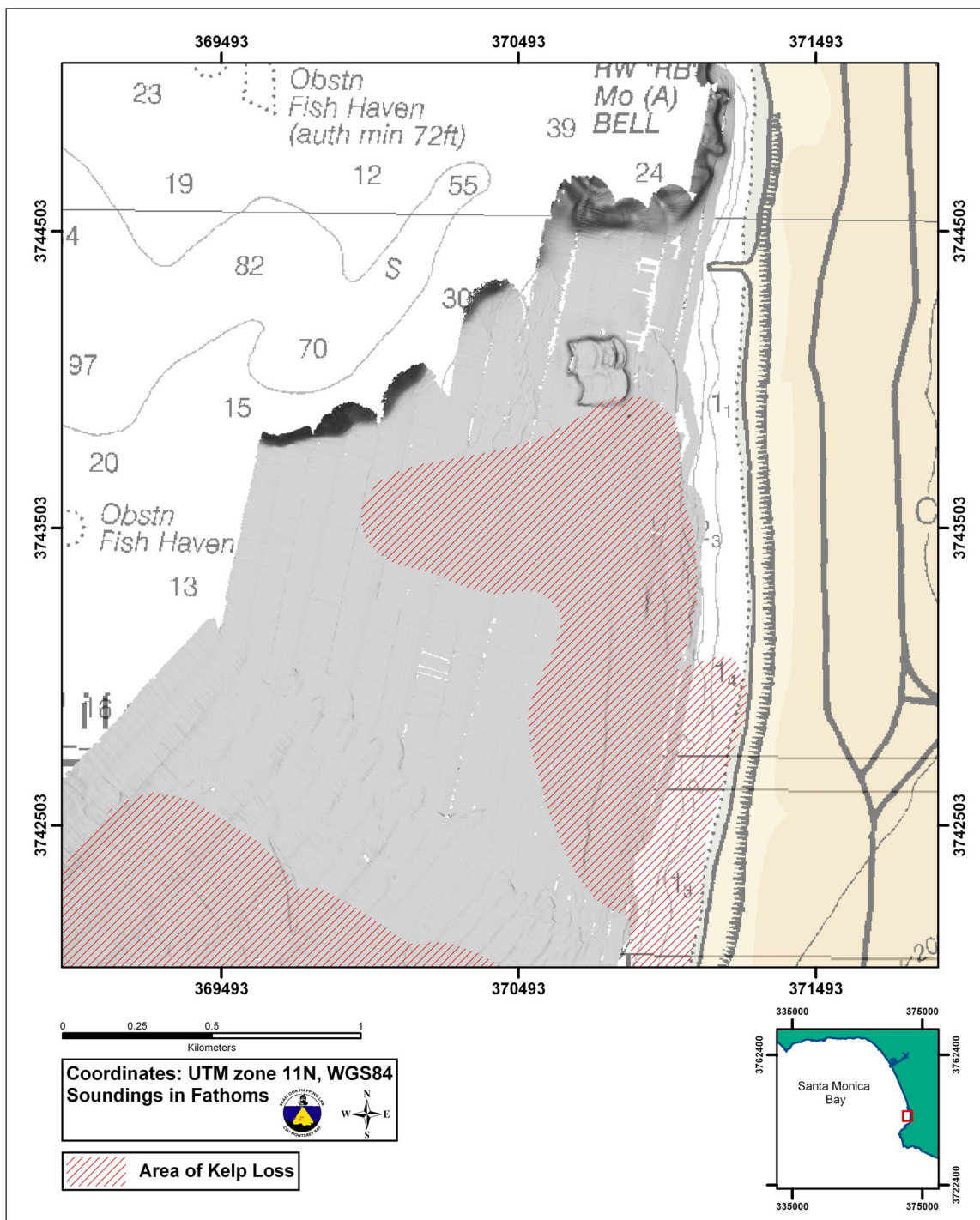




**Figure D11.** Grayscale shaded-relief multibeam image and kelp loss polygon for a portion of study area in northern SMB. A red box in inset map indicates area of main map.

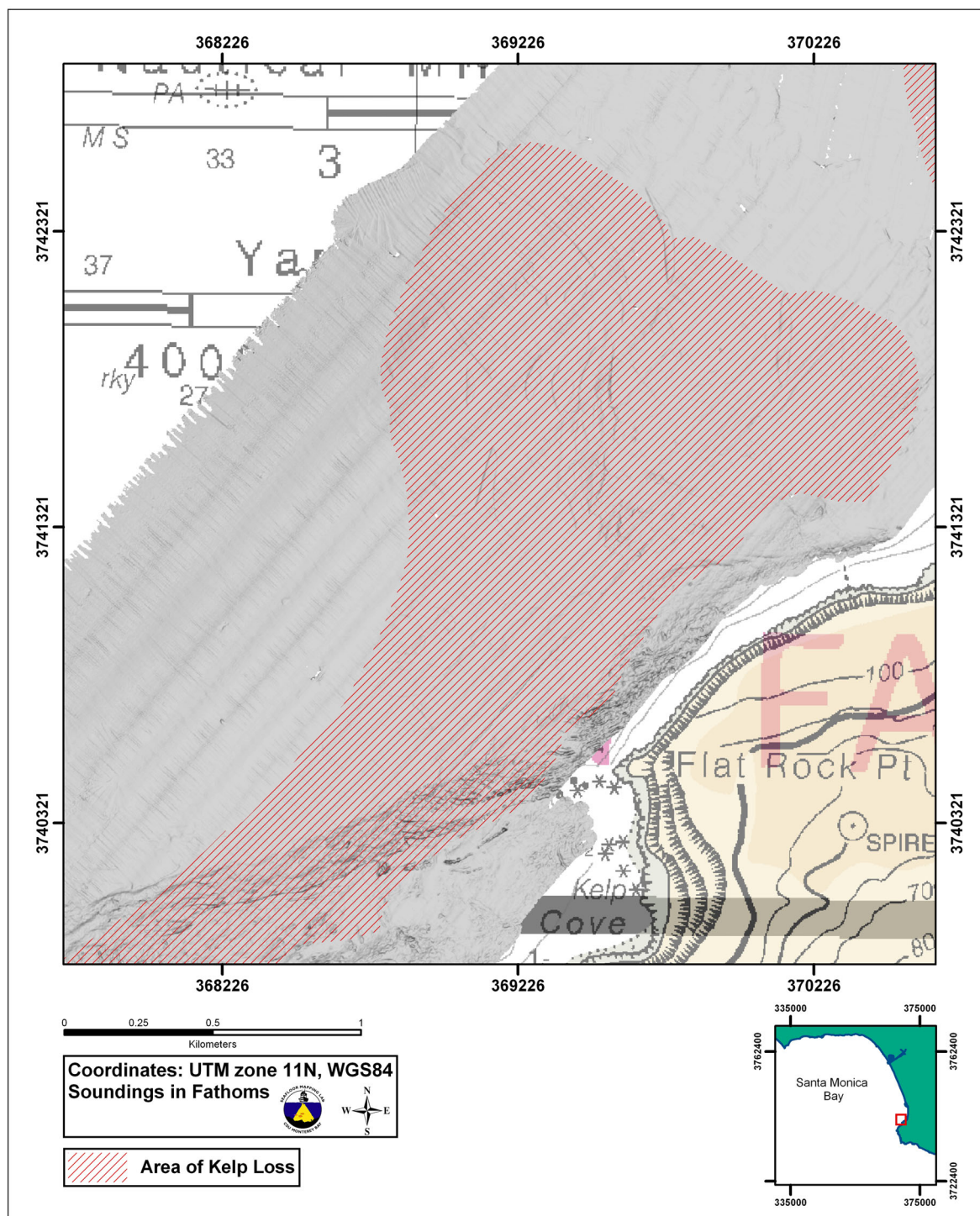


**Figure D12.** Grayscale shaded-relief multibeam image and kelp loss polygon for a portion of study area in northern SMB. A red box in inset map indicates area of main map.

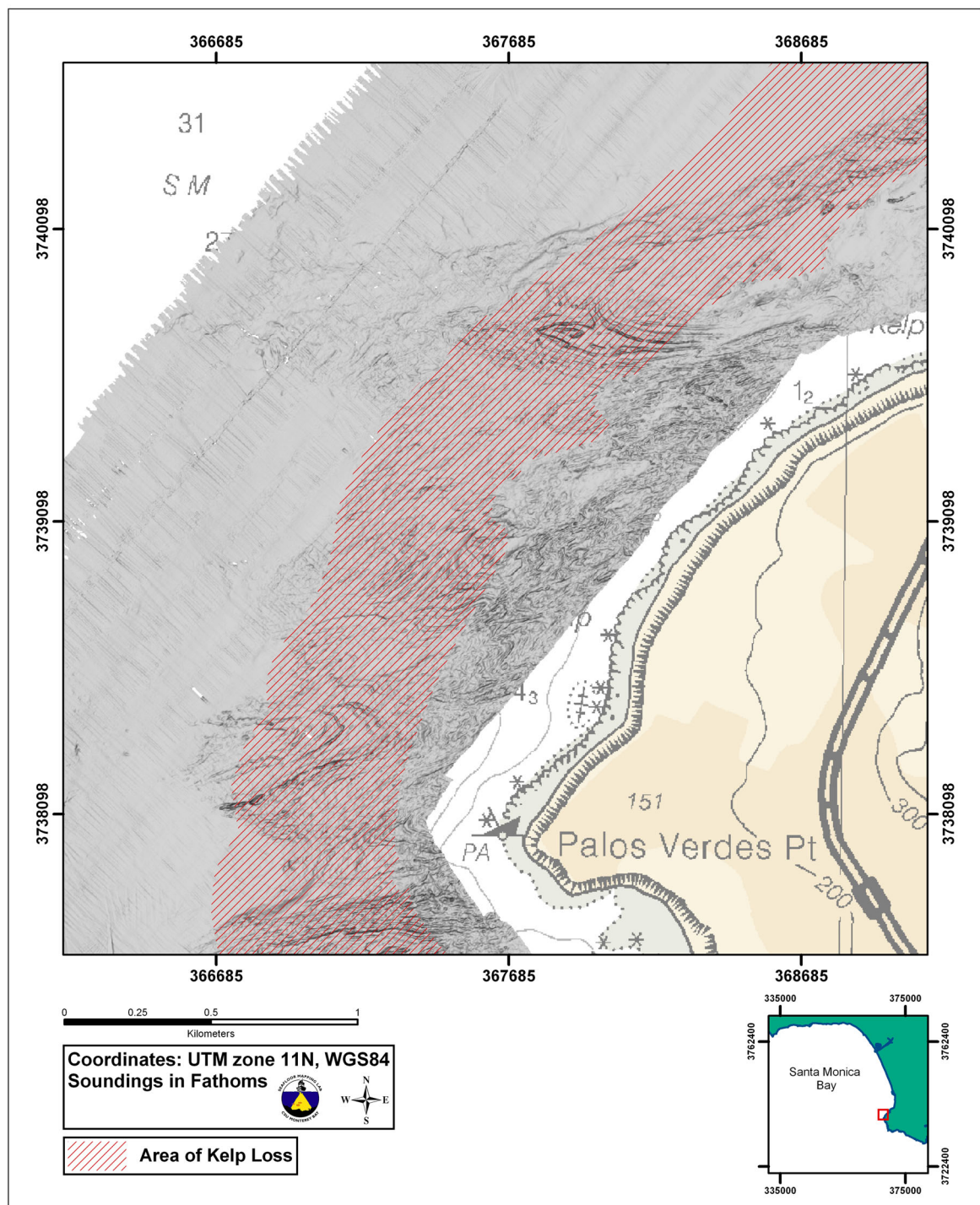


**Figure D13.** Grayscale shaded-relief multibeam image and kelp loss polygon for a portion of study area in Palos Verdes Peninsula. A red box in inset map indicates area of main map.



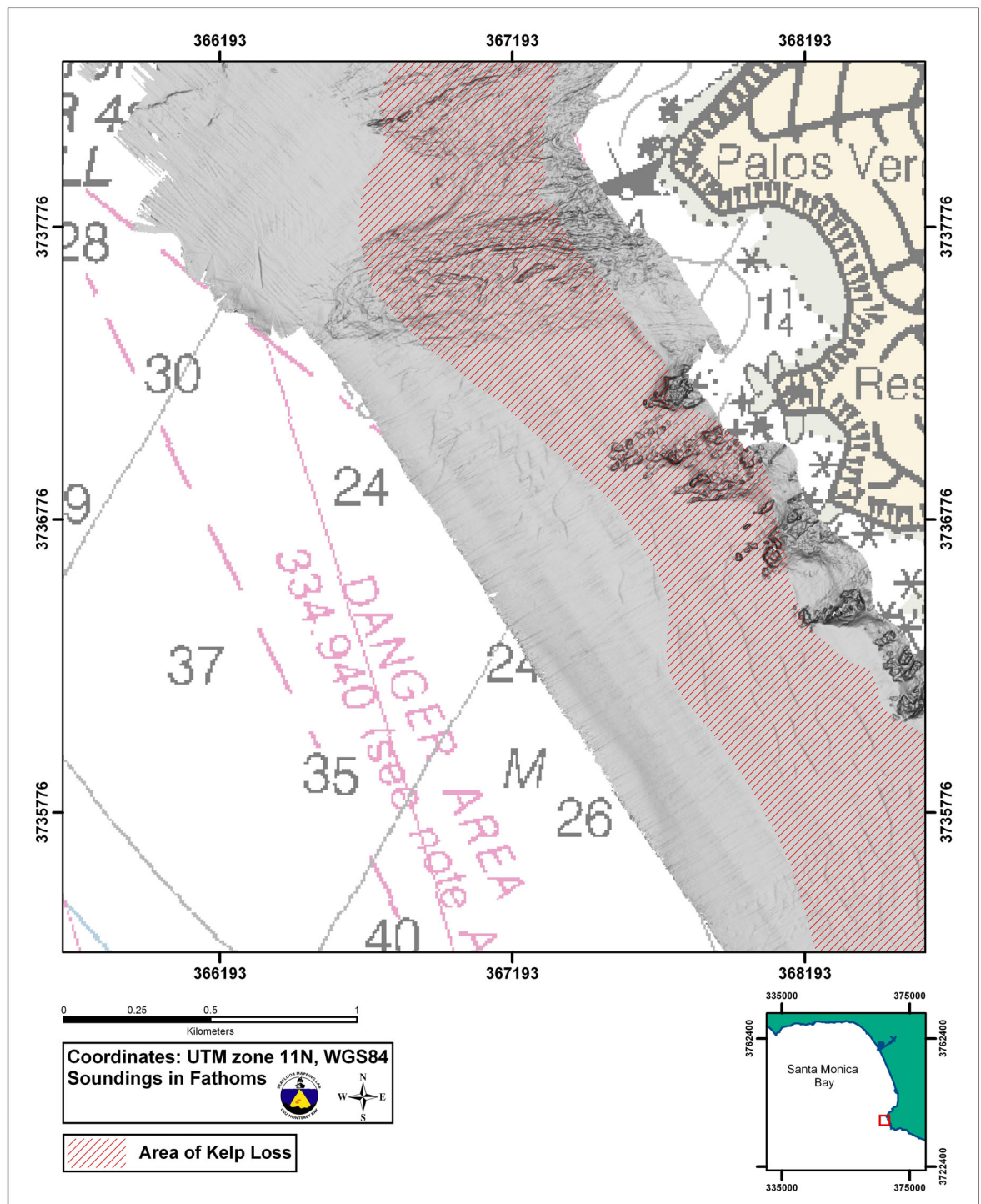


**Figure D14.** Grayscale shaded-relief multibeam image and kelp loss polygon for a portion of study area in Palos Verdes Peninsula. A red box in inset map indicates area of main map.



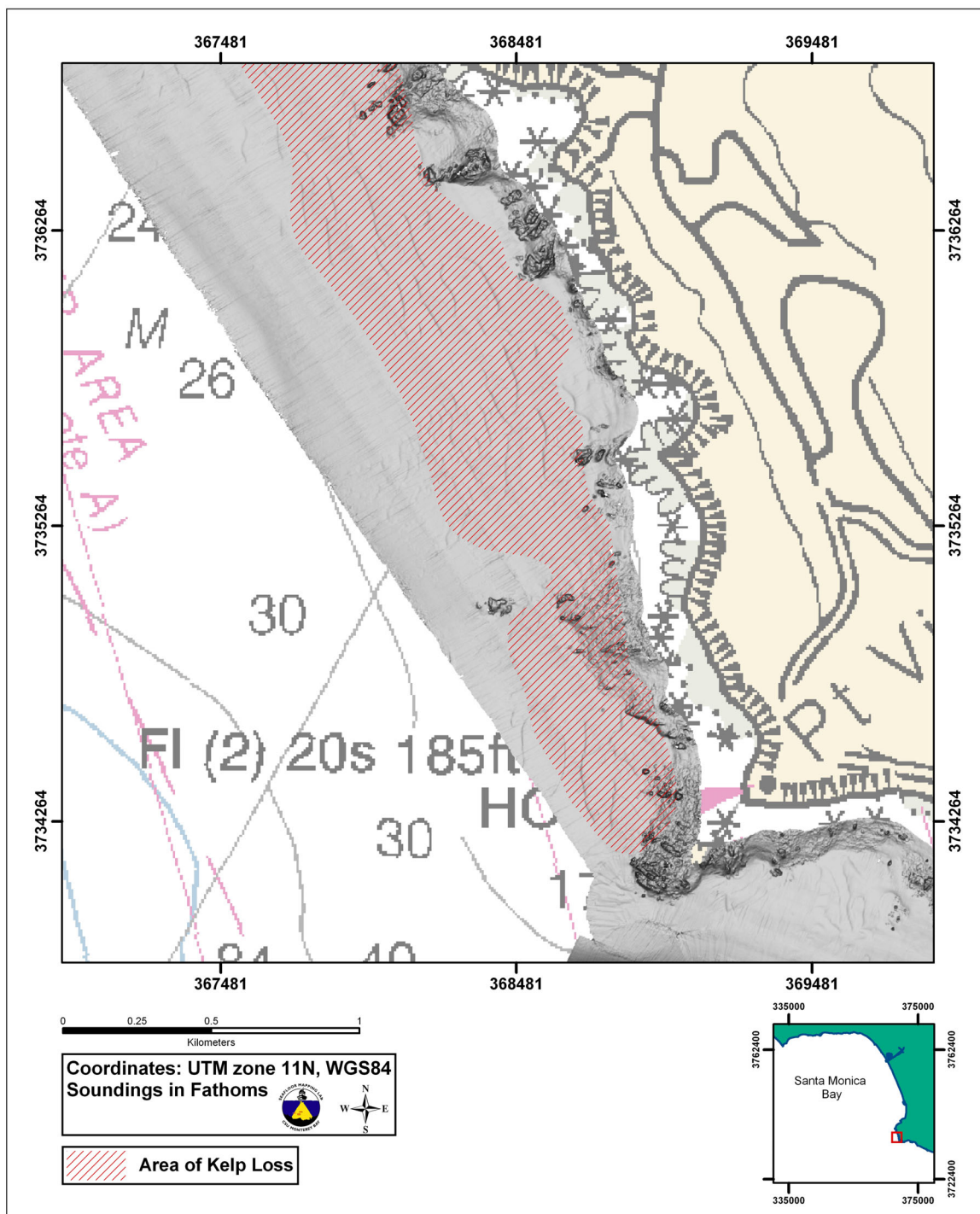
**Figure D15.** Grayscale shaded-relief multibeam image and kelp loss polygon for a portion of study area in Palos Verdes Peninsula. A red box in inset map indicates area of main map.



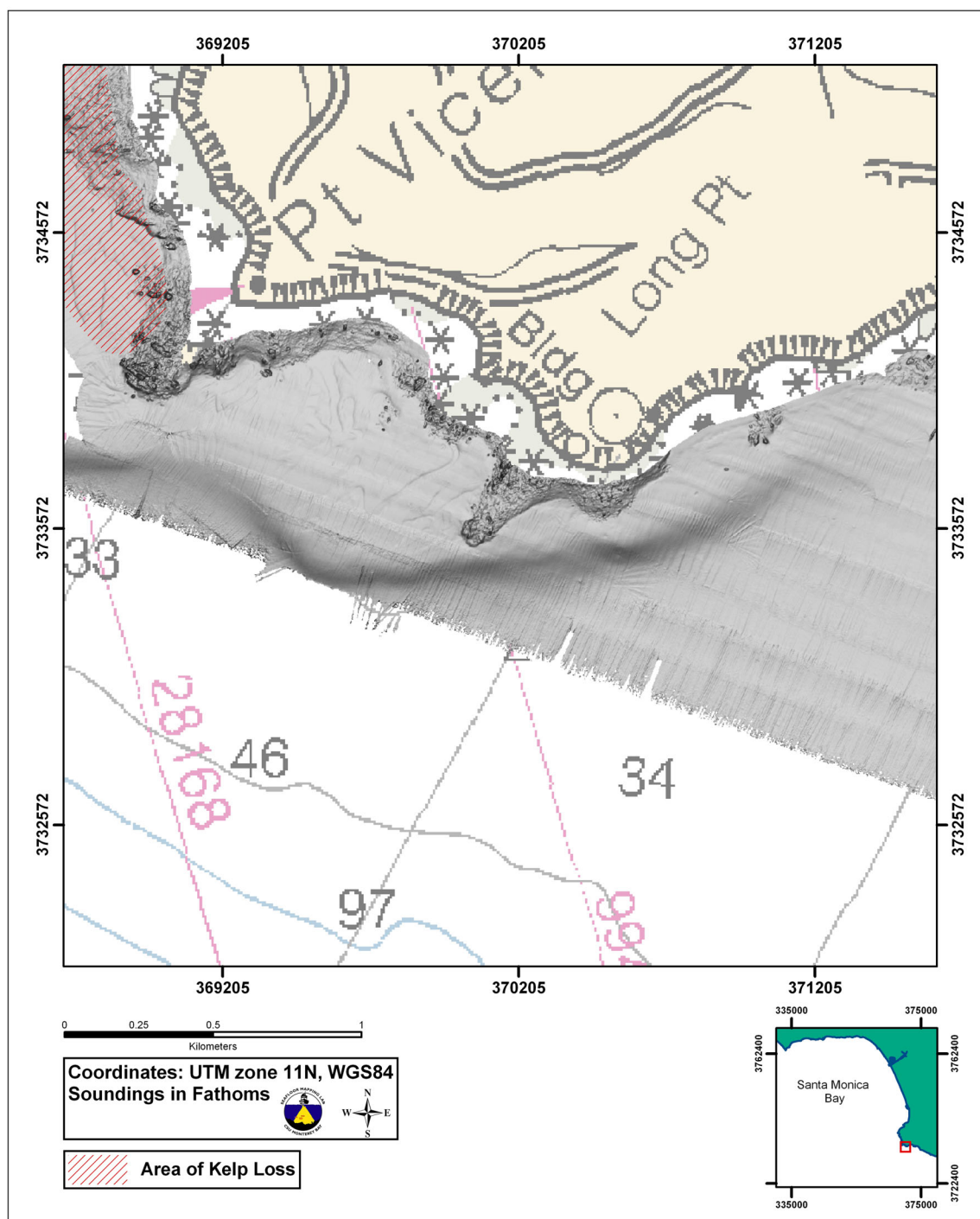


**Figure D16.** Grayscale shaded-relief multibeam image and kelp loss polygon for a portion of study area in Palos Verdes Peninsula. A red box in inset map indicates area of main map.

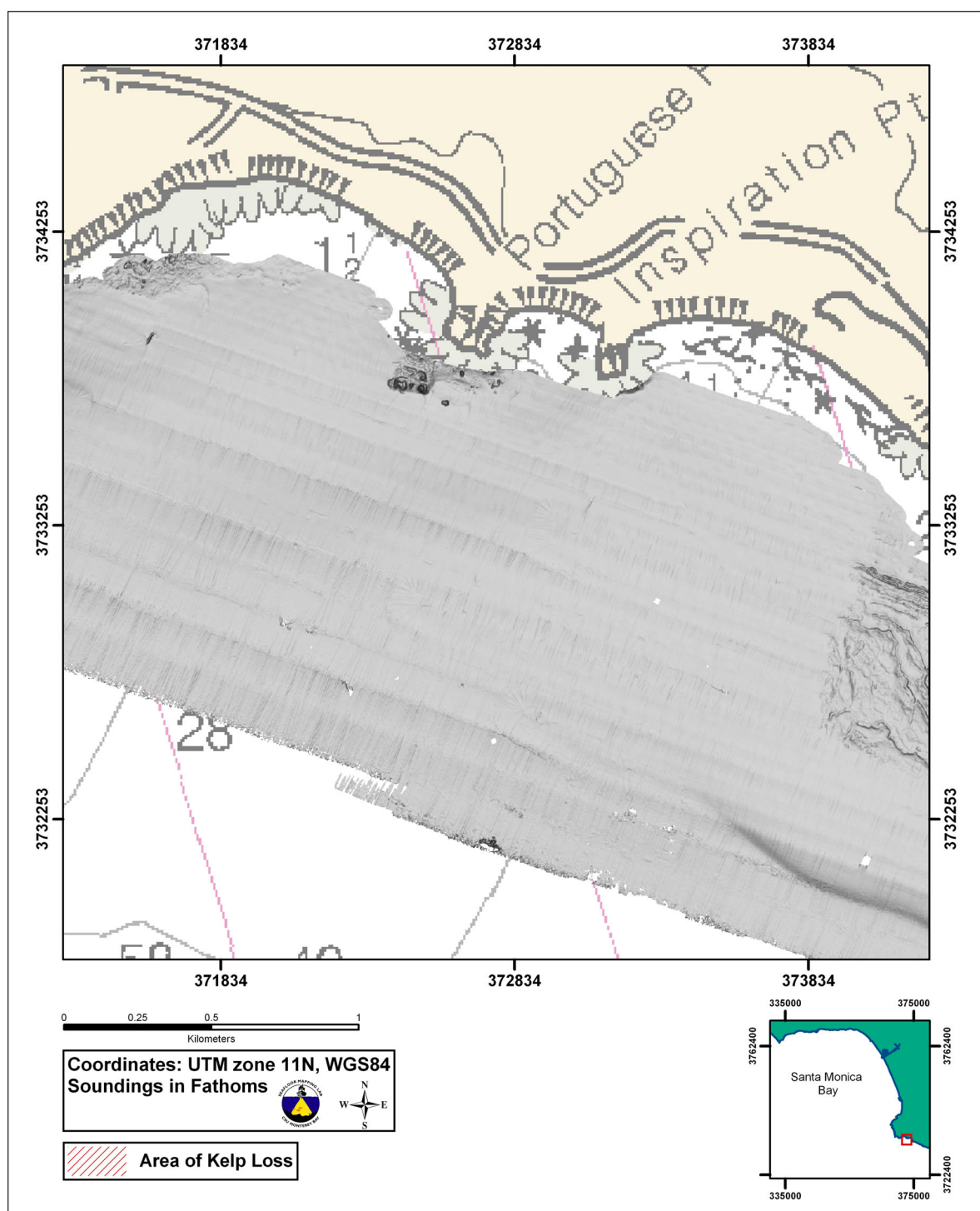




**Figure D17.** Grayscale shaded-relief multibeam image and kelp loss polygon for a portion of study area in Palos Verdes Peninsula. A red box in inset map indicates area of main map.

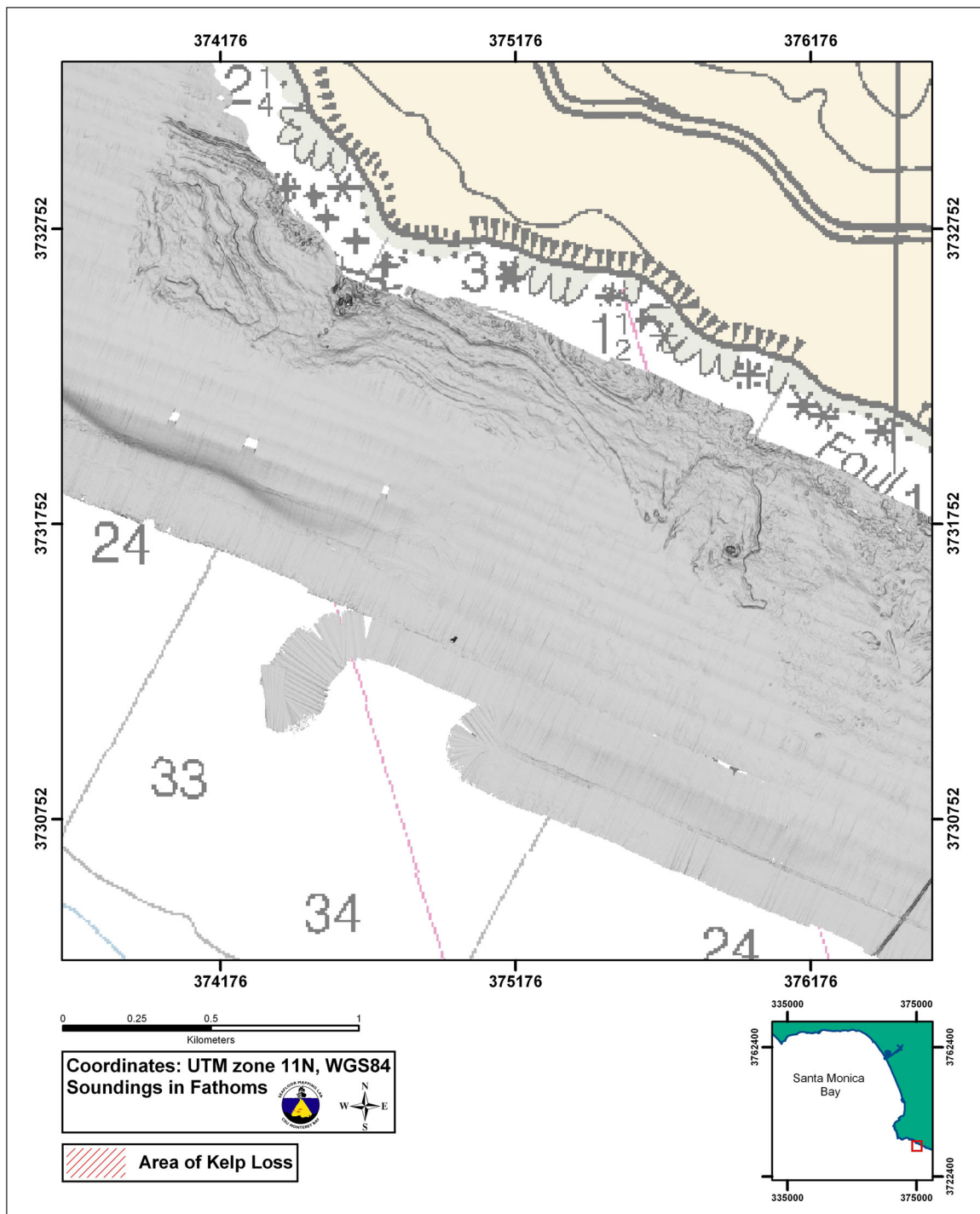


**Figure D18.** Grayscale shaded-relief multibeam image and kelp loss polygon for a portion of study area in Palos Verdes Peninsula. A red box in inset map indicates area of main map.

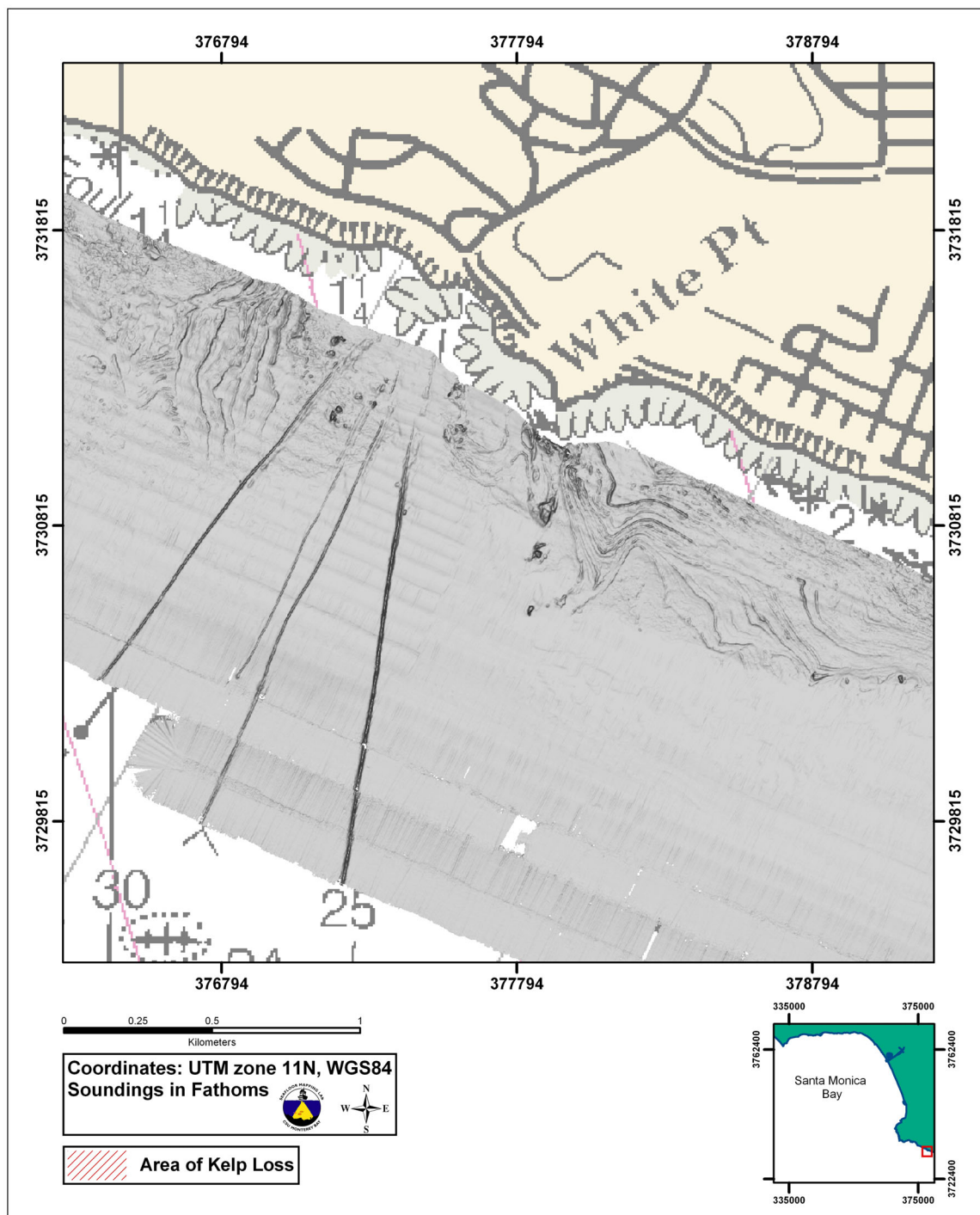


**Figure D19.** Grayscale shaded-relief multibeam image and kelp loss polygon for a portion of study area in Palos Verdes Peninsula. A red box in inset map indicates area of main map.

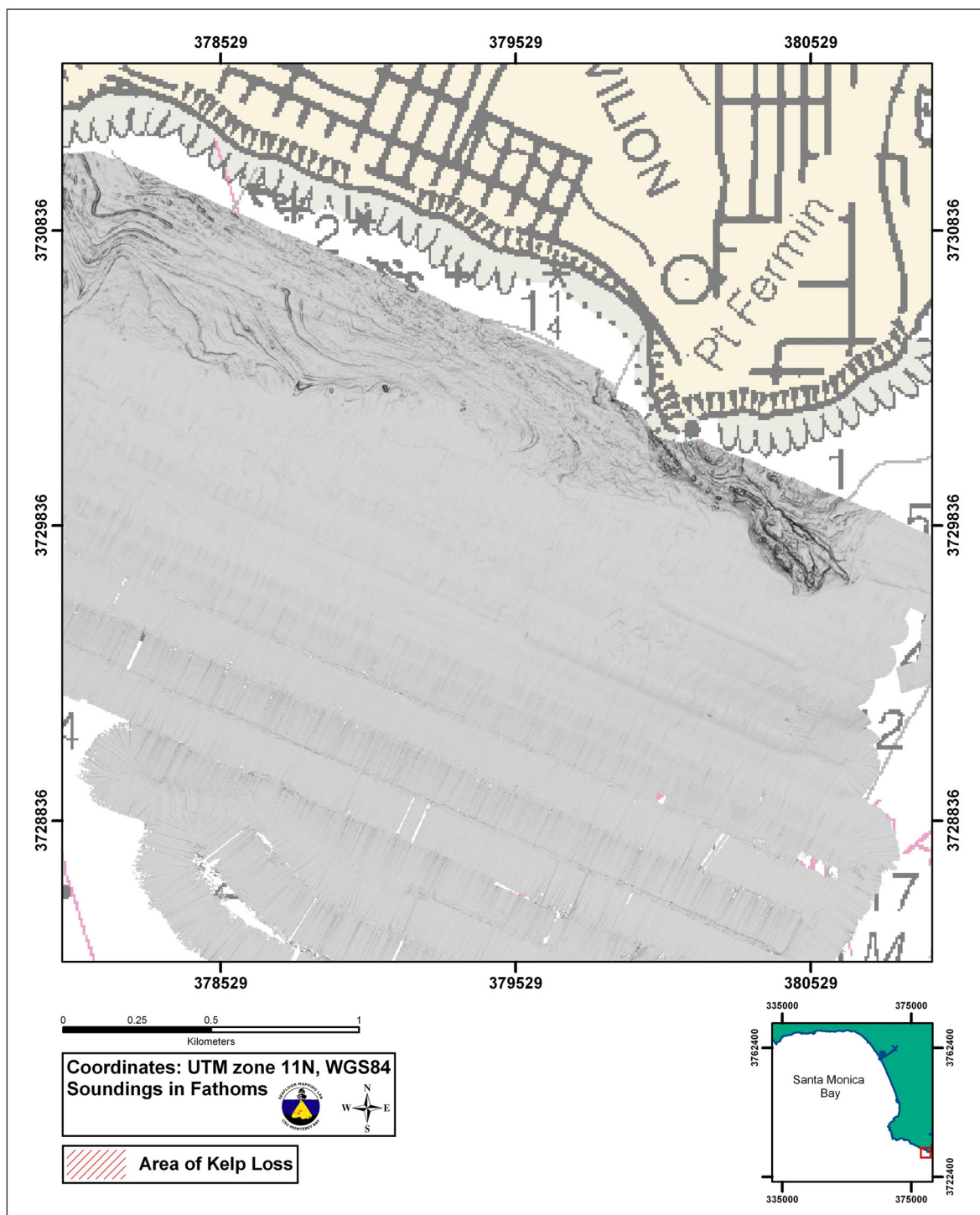




**Figure D20.** Grayscale shaded-relief multibeam image and kelp loss polygon for a portion of study area in Palos Verdes Peninsula. A red box in inset map indicates area of main map.



**Figure D21.** Grayscale shaded-relief multibeam image and kelp loss polygon for a portion of study area in Palos Verdes Peninsula. A red box in inset map indicates area of main map.



**Figure D22.** Grayscale shaded-relief multibeam image and kelp loss polygon for a portion of study area in Palos Verdes Peninsula. A red box in inset map indicates area of main map.