

dispage

How to Install/Uninstall/Upgrade a Dispage extension

Release 1.2

“How to Install/Uninstall/Upgrade a Dispage extension”,

Release 1.2, 2010

Copyright © 2010 Dispage - Patrizio Gelosi, All Rights Reserved

This document is subject to change without notice.

Disclaimer

All the Dispage extensions and all related documents are distributed on an “AS IS” basis, WITHOUT WARRANTY OF ANY KIND, either express or implied.

Contents

Disclaimer.....	2
Contents.....	3
Install Procedure.....	4
Uninstall Procedure.....	8
Upgrade Procedure.....	10

Install Procedure.

The procedure to install a generic Dispage extension is described in this paragraph.

1. Installing Dispage Extension Manager.

The first step to install a generic Dispage extension is to install the **Dispage Extension Manager (DEM)**. The last version of the install file is available in the DEM Project Page at SugarForge:

http://www.sugarforge.org/frs/?group_id=876.

2. Installing a Dispage extension.

From DEM v. 1.0.6, two alternative installation procedures can be followed.

2a. Installing one extension.

First the extension must be located in the “**Available Extensions**” tab of the DEM Admin Panel. Then, after checked the compatibility with the running SugarCRM™ version, the installation can be performed.

The steps are:

- i. Click on the “**Dispage Extensions**” link at the SugarCRM top-right bar.
- ii. Click on the “**Available Extensions**” tab.
- iii. Click on the extension to install (“ModuleSurfer” in the current example)
- iv. If the extension is compatible with the running SugarCRM version, the Sugar version is red-highlighted in the column “**Compatible Sugar Ver.**” on the right side of the table and an “**Install**” button appears on the bottom-right of the Detail Panel.

Click on the “**Install**” button to install the extension.

A screen similar to the Figure 1 appears after the step iii.

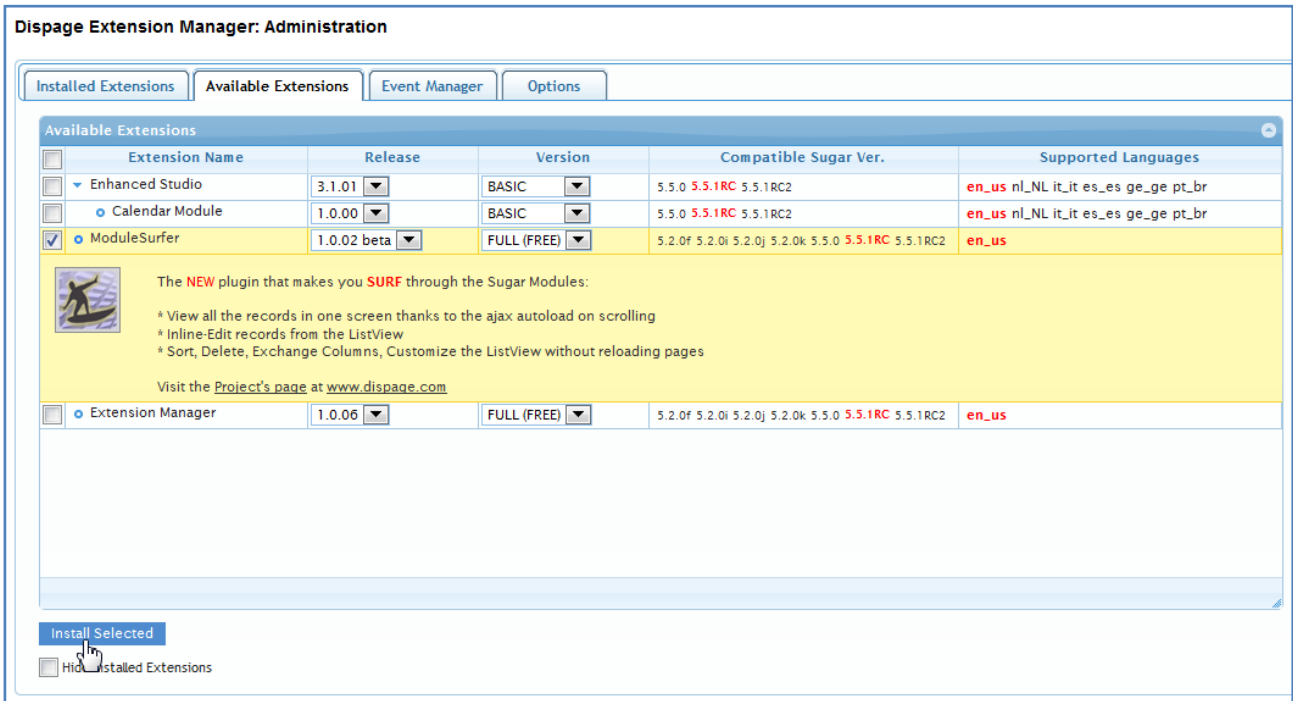


Figure 1

2b. Installing multiple extensions in one click (NEW in 1.0.6).

From the DEM v. 1.0.6 it is possible to **install multiple Dispage extensions in a single click**.

To perform a multiple installation, it is enough to check the extensions and click the **“Install Selected”** button at the bottom-left of the **“Available Extensions”** tab (as in Figure 1). Then the selected extensions are sequentially installed (this includes the steps 3 and 4).

WARNING

When a multiple installation is performed, the Dependency Manager automatically checks if at least one extension among the selection can be installed without breaking any dependencies with other extensions.

The terminal of a dependency may be an installed extension (i.e. if it needs to be updated before the installation of the extension) or any other extension that needs to be installed before the current installation.

If the DM finds an extension free from dependencies, it starts to install the extension and then searches for another one.

Otherwise the installation process stops with a warning.

3. Acceptance of the License Agreement.

As the install button is clicked, a confirm dialog box opens. If the “OK” button is clicked, a License Agreement like the one in Figure 2 appears:

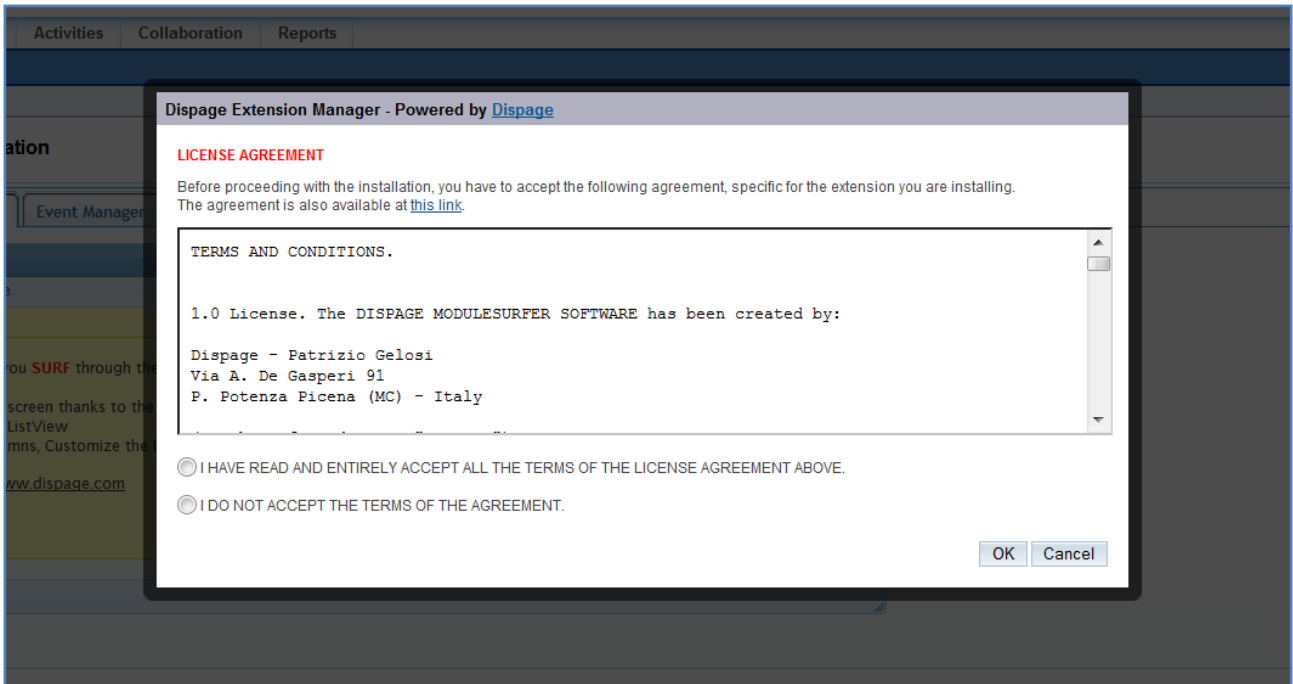


Figure 2

To proceed with the installation, all the terms of the license must be read, understood and accepted.

4. Installation of the selected Dispage extension.

After accepted the Agreement above, the DEM extension is **downloaded** from the **Dispage Resource Center (DRC)**, then **installed and validated** (Figure 3).

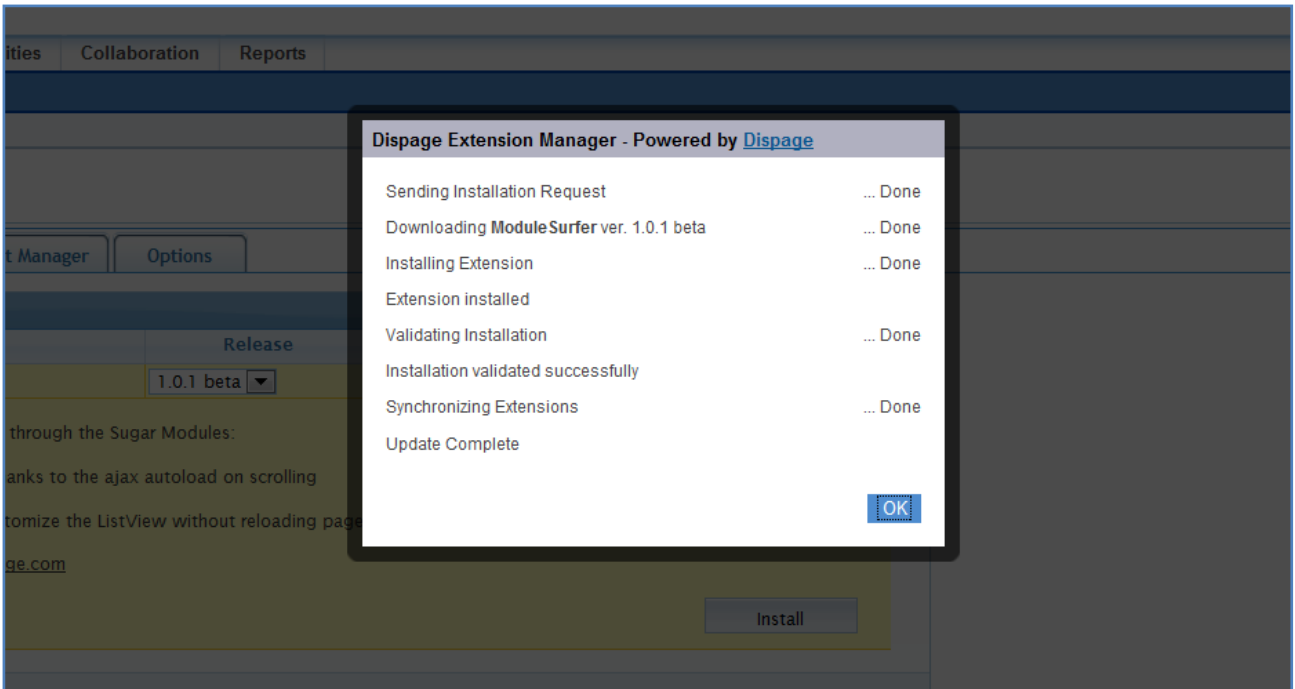


Figure 3

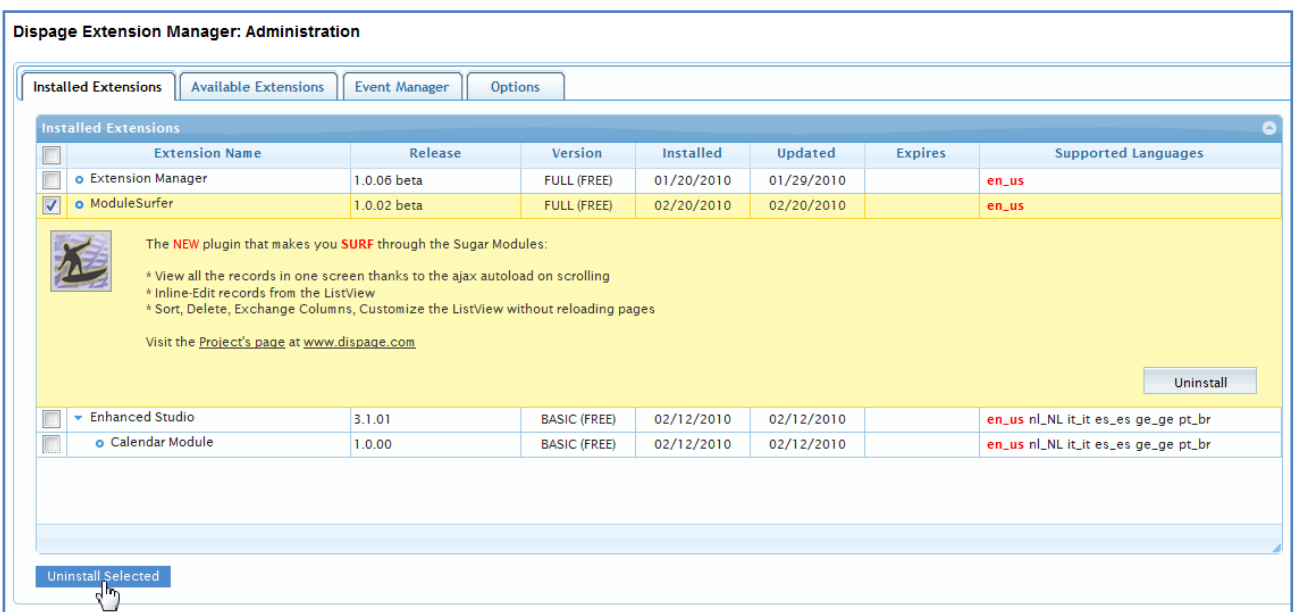


Figure 4

Uninstall Procedure.

From DEM v. 1.0.6, two alternative uninstallation procedures can be followed.

a. Uninstallation of one extension.

To uninstall a Dispage extension, the procedure is the following:

- i. Click on the “**Dispage Extensions**” link at the SugarCRM top-right bar.
- ii. Click on the “**Installed Extensions**” tab.
- iii. Click on the extension to uninstall.
- iv. Click on the “**Uninstall**” button on the bottom-right of the extension Detail Panel (Figure 4)

After the uninstall confirmation, the extension is uninstalled (Figure 5).

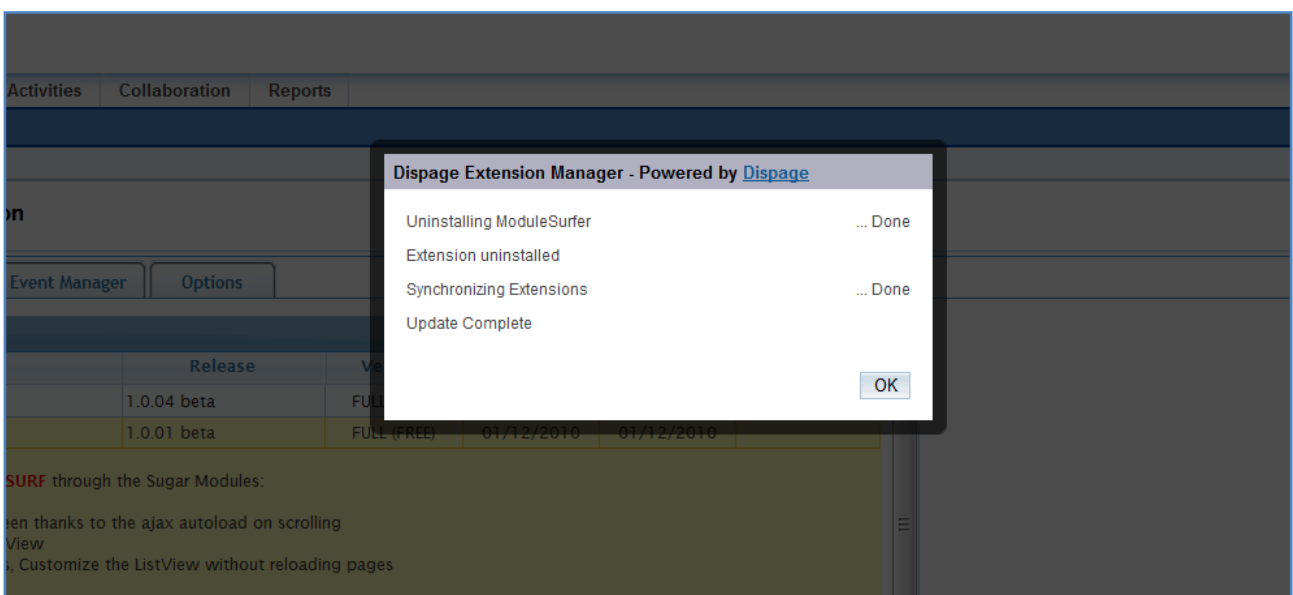


Figure 5

b. Uninstallation of multiple extensions in one click (**NEW in 1.0.6**).

From the DEM v. 1.0.6 it is possible to **uninstall multiple Dispage extensions in one click**.

After checked the extensions, the “**Uninstall Selected**” button at the bottom-left of the “**Installed Extensions**” tab must be clicked (Figure 4).

Then the selected extensions are sequentially uninstalled.

WARNING

When a multiple uninstallation is performed, the Dependency Manager automatically checks if at least one extension among the selection can be uninstalled without breaking any dependencies with other extensions (the terminal of a dependency is another extension that needs to be uninstalled before the current uninstallation).

If an extension free from dependencies is found, the DM starts to uninstall the extension and then searches for another one.

Otherwise the uninstallation process stops with a warning.

Upgrade Procedure.

To upgrade a Dispage extension one of the methods reported below must be followed.

a. Upgrade from the connection popup.

The first time that a SugarCRM user having Administrator privileges connects to the DRC after that a new release of an extension (“ModuleSurfer” in this example) has been published, a screen similar to the one in Figure 6 appears.

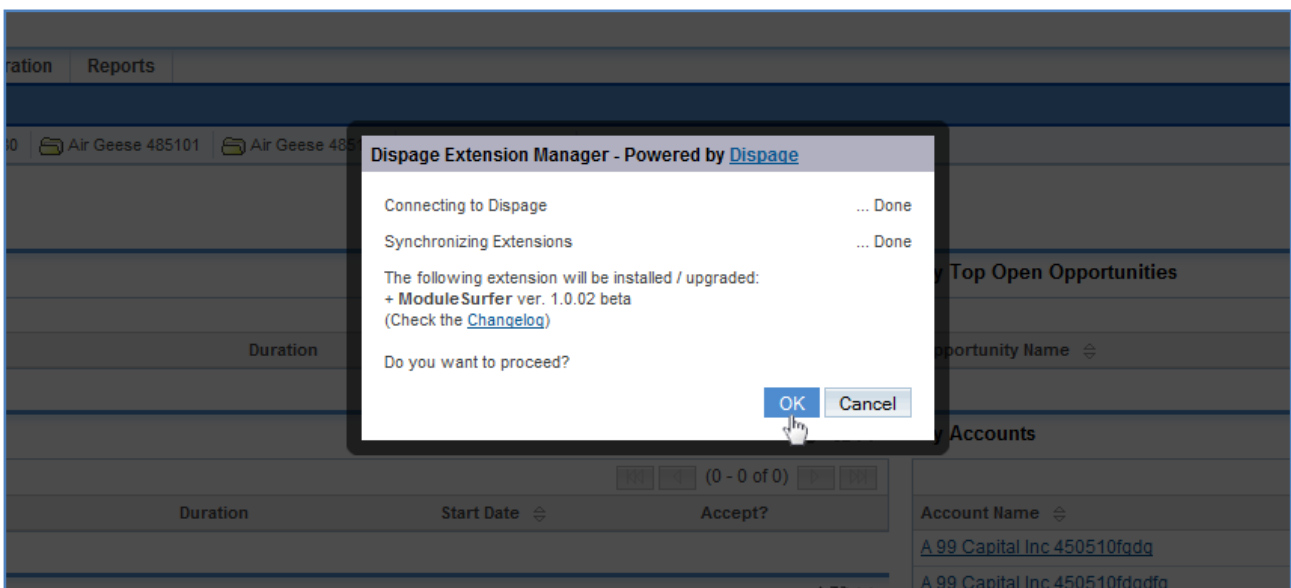


Figure 6

Before upgrading, a link to the **Changelog** under the information about the extension name and the version (“ModuleSurfer ver. 1.0.02 beta” in this example) can be followed to check the changes in the new version which is about to be installed.

After the confirmation, the new release of the extension is **downloaded** from the DRC, then **upgraded** and **validated**.

Finally, the popup turns into something similar to the one shown in the Figure 3 .

b. Upgrade from the DEM Administration Panel.

If the user clicks “**Cancel**” in the popup of the Figure 6, the upgrade option still remains available. It can be manually performed from the DEM Administration panel, simply by selecting the extension to upgrade from the “**Installed Extensions**” tab (Figure 7).

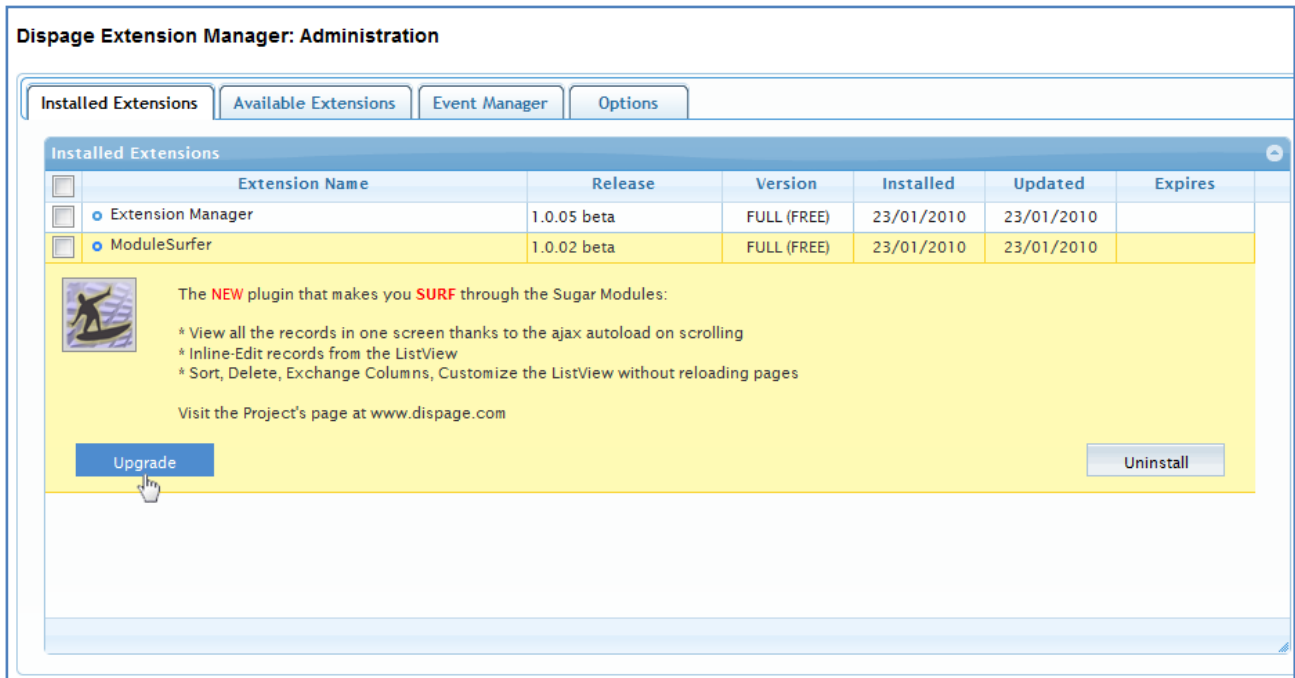


Figure 7

Then, if the “**Upgrade**” button is clicked, a popup similar to the one shown in the Figure 6 appears and the procedure continues in the same way as the point “a”.