

# IQCH regulates spermatogenesis by interacting with CaM to promote the expression of RNA-binding proteins

## Reviewed Preprint

Revised by authors after peer review.

## About eLife's process

### Reviewed preprint version 3

May 15, 2024 (this version)

### Reviewed preprint version 2

February 13, 2024

### Reviewed preprint version 1

August 29, 2023

### Posted to preprint server

June 26, 2023

### Sent for peer review

May 12, 2023

Tiechao Ruan, Ruixi Zhou, Yihong Yang, Junchen Guo, Chuan Jiang, Xiang Wang, Gan Shen, Siyu Dai, Suren Chen , Ying Shen 

Key Laboratory of Obstetrics, Gynecologic and Pediatric Diseases and Birth Defects of the Ministry of Education, Sichuan University, Chengdu, 610041, China; • Department of Pediatrics, West China Second University Hospital, Sichuan University, Chengdu 610041 China; • Reproduction Medical Center of West China Second University Hospital, Key Laboratory of Obstetric, Gynecologic and Pediatric Diseases and Birth Defects of Ministry of Education, Sichuan University, Chengdu 610041, China; • Sichuan University-The Chinese University of Hong Kong (SCU-CUHK) Joint Laboratory for Reproductive Medicine, Key Laboratory of Obstetric, Gynaecologic and Paediatric Diseases and Birth Defects of Ministry of Education, West China Second University Hospital, Sichuan University, Chengdu 610041, China • Reproductive Endocrinology and Regulation Laboratory, Department of Obstetric and Gynaecologic, West China Second University Hospital, Sichuan University, Chengdu 610041, China • Education Key Laboratory of Cell Proliferation & Regulation Biology, College of Life Sciences, Beijing Normal University, Beijing 100875, China • NHC Key Laboratory of Chronobiology, Sichuan University, Chengdu 610041, China;

 [https://en.wikipedia.org/wiki/Open\\_access](https://en.wikipedia.org/wiki/Open_access)

 Copyright information

## Abstract

IQ motif-containing proteins can be recognized by calmodulin (CaM) and are essential for many biological processes. However, the role of IQ motif-containing proteins in spermatogenesis is largely unknown. In this study, we identified a loss-of-function mutation in the novel gene IQ motif-containing H (*IQCH*) in a Chinese family with male infertility characterized by a cracked flagellar axoneme and abnormal mitochondrial structure. To verify the function of *IQCH*, *Iqch*-knockout mice were generated via CRISPR-Cas9 technology, which reproduced human phenotypes. Mechanistically, *IQCH* can bind to CaM and subsequently regulate the expression of RNA-binding proteins (especially HNRPAB), which are indispensable for spermatogenesis. Overall, this study revealed the function of *IQCH*, expanded the role of IQ motif-containing proteins in reproductive processes, and provided important guidance for genetic counseling and genetic diagnosis of male infertility.

### eLife assessment

This **valuable** study describes mice with a knock out of the IQ motif-containing H (IQCH) gene, to model a human loss-of-function mutation in IQCH associated with male sterility. The infertility is reproduced in the mouse, making it a **compelling** model, but some of the mechanistic experiments provide only indirect and thus **incomplete** evidence for interaction between IQCH and potential RNA binding proteins. With more rigorous approaches, the paper should be of interest to cell biologists and male reproductive biologists working on the sperm flagellar cytoskeleton and mitochondrial structure.

<https://doi.org/10.7554/eLife.88905.3.sa2>

## Introduction

Spermatogenesis is one of the most complex biological processes in male organisms and functions to produce mature spermatozoa from spermatogonia in three phases: (i) mitosis, (ii) meiosis, and (iii) spermiogenesis (Hess and Renato de Franca 2008 [↗](#)). This delicate process can be easily disturbed and further cause male reproductive disorders. Male infertility affects 7% of men in the general population, and its causes vary and include anatomical or genetic abnormalities, systemic diseases, infections, trauma, iatrogenic injury, and gonadotoxins (Krausz et al. 2018 [↗](#)). Approximately 10% of the human genome is related to reproductive processes; thus, male infertility is often predicted to be largely genetic in origin, whereas only 4% of infertile men are diagnosed with a distinct genetic cause (Krausz and Riera-Escamilla 2018 [↗](#)). Genetic causes are highly heterogeneous and involve chromosomal abnormalities, point mutations in single genes, copy number variations, microRNA dysfunction, and polygenic defects (Meschede and Horst 1997 [↗](#), Traven et al. 2017 [↗](#)). The highest percentage of known genetic factors that account for up to 25% of male infertility are karyotype anomalies, Y chromosome microdeletions, and *CFTR* mutations, which are mostly associated with azoospermia (Krausz and Riera-Escamilla 2018 [↗](#)). However, in a relatively high proportion of infertile men (40%), the etiology cannot be recognized and is also referred to as idiopathic. With the help of assisted reproductive techniques (ART), some men have the chance to reproduce; however, there is a risk of passing on undetermined genetic abnormalities. In addition, genetic defects leading to fertilization failure and embryo development arrest cannot be effectively rescued by ART; thus, discovering novel genetic factors and further confirming their molecular mechanisms are of clinical importance.

Calmodulin (CaM) is defined as a major  $\text{Ca}^{2+}$  sensor that activates many kinds of enzymes in response to an increase in intracellular  $\text{Ca}^{2+}$  through interactions with a diverse group of cellular proteins (Klee et al. 1980 [↗](#), Means et al. 1982 [↗](#)). CaM has a completely conserved amino acid sequence across all vertebrates (Jensen et al. 2018 [↗](#)). Specifically, in the human genome, there are three independent CaM genes (*CALM1-3*), while in the mouse genome, there are five CaM genes (*Calm1-5*) (Jensen et al. 2018 [↗](#)) (<https://www.ncbi.nlm.nih.gov/gene/?term=calm+mouse> [↗](#)). Previous studies have reported that CaM is extraordinarily abundant in the mammalian testis and brain (Smoake et al. 1974 [↗](#), Kakiuchi et al. 1982 [↗](#)). Moreover, CaM is predominantly expressed in the mammalian testis, from the pachytene to meiotic division stages (Smoake et al. 1974 [↗](#), Kakiuchi et al. 1982 [↗](#), YAMAMOTO 1985 [↗](#), Sano et al. 1987 [↗](#), Kägi et al. 1988 [↗](#), Moriya et al. 1995 [↗](#)). CaM binds to proteins through recognition motifs, including the short CaM-binding motif containing conserved Ile and Gln residues (IQ motif) for  $\text{Ca}^{2+}$ -independent binding and two related motifs for  $\text{Ca}^{2+}$ -dependent binding (Nie et al. 2009 [↗](#)). The identified IQ motif-containing proteins included a good range of proteins with biological functions, one of which is a sperm surface protein,

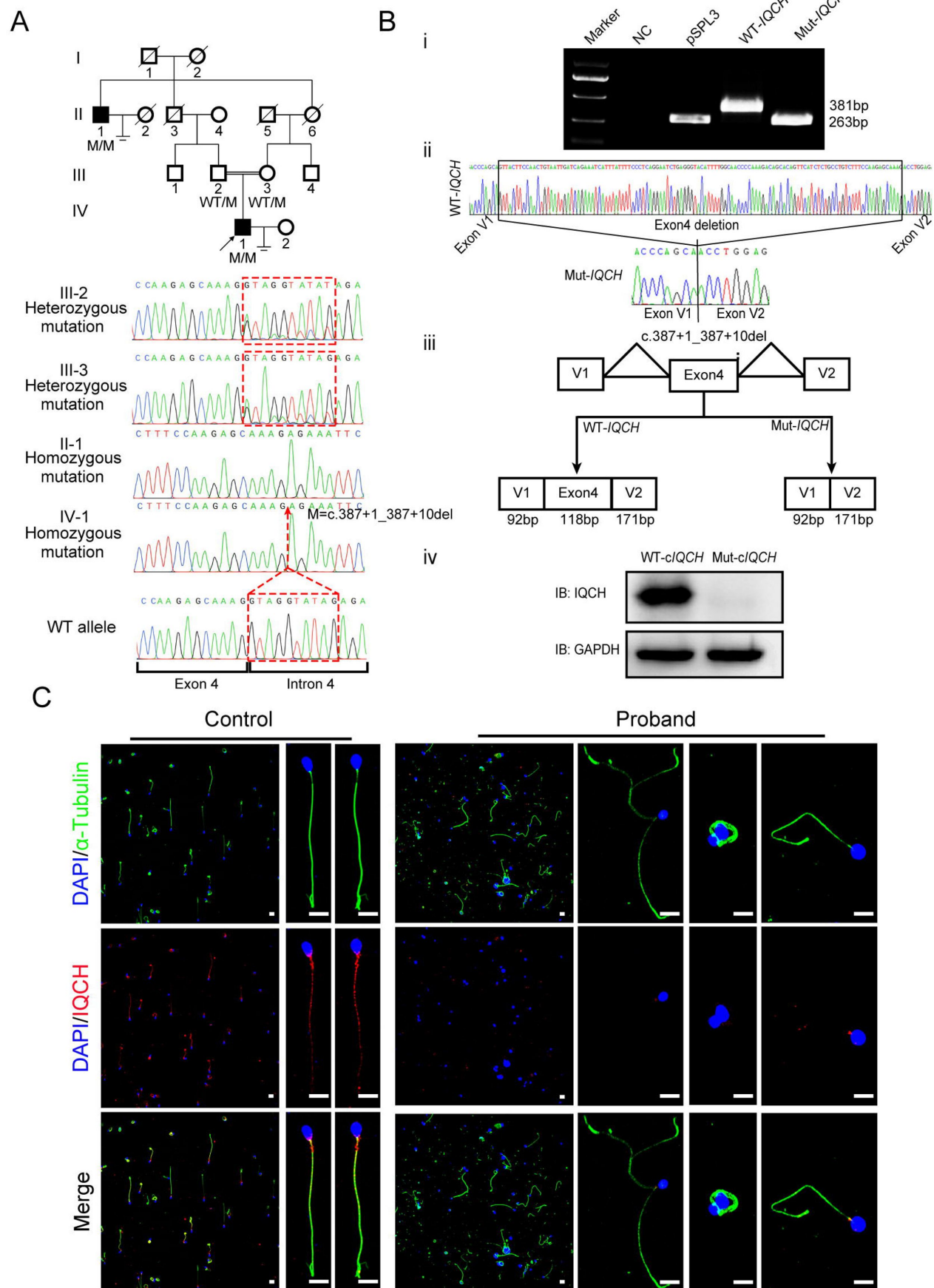
suggesting that IQ motif-containing proteins might play a potential role in male reproductive processes (Wen et al. 1999 [↗](#), Dolmetsch et al. 2001 [↗](#)). Currently, 15 IQ motif-containing proteins have been identified in humans, namely, IQCA1, IQCB1, IQCC, IQCD, IQCE, IQCF1, IQCF2, IQCF5, IQCF6, IQCG, IQCH, IQCJ, IQCK, IQCM, and IQCN. With the exception of IQCF2, mice possess a similar set of IQ proteins (<https://www.ncbi.nlm.nih.gov/gene/?term=IQCF2> [↗](#)). Notably, IQCF4 is present in mice but absent in humans. However, among these IQ motif-containing proteins, only a few have been reported to be responsible for male fertility. It has been shown that the IQ motif-containing D (IQCD) primarily accumulates in the acrosome area of spermatids during mouse spermiogenesis, and the acrosome reaction is inhibited in human spermatozoa by the anti-IQCD antibody, suggesting a potential function of IQCD in fertilization and the acrosome reaction (Zhang et al. 2019 [↗](#)). Moreover, *Iqcf1* knockout (KO) male mice showed significantly less fertility, which was related to reduced sperm motility and acrosome reactions (Fang et al. 2015 [↗](#)). Importantly, *Iqcg* is required for mouse spermiogenesis, which is attributable to its role in flagellar formation and/or function (Harris et al. 2014 [↗](#)). Humans and mice without IQCN presented failed fertilization rates related to manchette assembly defects (Dai et al. 2022 [↗](#)). Although reliable findings provide substantial insight into IQ motif-containing proteins that participate in male reproductive processes, the relevant regulatory mechanism and the function of many other IQ motif-containing proteins in spermatogenesis have not been determined thus far.

Here, we revealed a testis-specific IQ motif containing H gene, *IQCH*, which is essential for spermiogenesis and fertilization. Disruption of *IQCH* leads to deficient acrosome activity and abnormal structure of the axoneme and mitochondria in both humans and mice. Moreover, it is suggested that the interaction of *IQCH* with CaM is a prerequisite for *IQCH* function, which further regulates the expression of RNA-binding proteins (especially HNRPAB) during spermatogenesis. Collectively, our findings unveiled a novel genetic diagnostic indicator of male infertility, and the uncovered mechanism of *IQCH* in spermatogenesis might shed new light on the treatment of this disease.

## Results

### Identification of a novel homozygous variant of *IQCH* involved in male infertility

A 33-year-old man from a consanguineous family with primary infertility for four years was recruited for our study (Figure 1A [↗](#)). Semen analysis of this patient revealed inordinate decreases in sperm motility and count, as well as abnormal sperm morphology (Table 1 [↗](#)). In addition to the proband, his great uncle was also affected, and he had never conceived during sexual intercourse without contraception in his marriage. We further explored the possible genetic cause through whole-exome sequencing (WES) analysis, and a homozygous deletion variant in *IQCH* (c.387+1\_387+10del, NM\_0010317152) was identified in the proband. This variant is rare in the general human population according to the 1000 Genomes Project (0.007%), ExAC Browser (0.059%), and gnomAD databases (0.024%). We further clarified the putative contribution of this variant in this family by Sanger sequencing. Noticeably, this homozygous variant was confirmed in his infertile great uncle, and the fertile parents of the proband carried the heterozygote of this variant (Figure 1A [↗](#)).



**Figure 1.**

### Identification of a homozygous splicing mutation in *IQCH* in a consanguineous family with male infertility.

(A) Pedigree analysis of the consanguineous family with two infertile males (II-1 and IV-1), with the black arrow pointing to the proband. Sanger sequencing revealed that the affected males exhibited a homozygous variant in *IQCH*. Sequence chromatograms are shown below the pedigree. (B) (i) The electrophoresis results of the minigene assay show a decrease in the molecular weight of the RT-PCR products generated from Mut-*IQCH* (263 bp) compared with those from WT-*IQCH* (381 bp). (ii) Sanger sequencing of the complementary DNA of the splicing mutation showing the deletion of exon 4 in *IQCH*. (iii) The pattern diagram demonstrating the splicing effects caused by the *IQCH* mutation. (iv) Western blotting results showed that the Mut-*cIQCH* plasmids did not express *IQCH*. NC, negative control. Three independent experiments were performed. (C) Immunofluorescence staining showed that the expression of *IQCH* was barely detected in the proband's sperm compared with that in the control (blue, DAPI; green,  $\alpha$ -Tubulin; red, *IQCH*; scale bars, 5  $\mu$ m).

Moreover, we used a minigene splicing assay to examine the effect of this variant on *IQCH* mRNA splicing. The electrophoresis results revealed that wild-type *IQCH* (WT-*IQCH*) yielded one transcript with a size of 381 bp, whereas the mutant *IQCH* (Mut-*IQCH*) resulted in one strong band of 263 bp (Figure 1B, i). Sanger sequencing further showed that the variant resulted in the absence of the whole exon 4, which was expected to translate into a truncated protein (Figure 1B, ii and iii). Therefore, we constructed a plasmid containing the aberrant cDNA sequence of *IQCH* caused by the splicing mutation to verify the effect of the variant on protein expression. The western blotting results showed that the Mut-*cIQCH* plasmid did not express *IQCH*, while the WT-*cIQCH* plasmid did (Figure 1B, iv). We further conducted immunofluorescence staining of spermatozoa from the proband and the control. We detected very little expression of the *IQCH* protein in spermatozoa from the proband compared to the control (Figure 1C). Taken together, these results reveal that this identified *IQCH* variant is responsible for splicing abnormalities and further causes a lack of *IQCH* expression, which is likely the genetic cause of male infertility in this family.

### *IQCH* deficiency leads to sperm with cracked axoneme structures accompanied by defects in the acrosome and mitochondria

A comprehensive sperm morphology analysis was further conducted on the proband (the semen was not available from his great uncle). Papanicolaou staining revealed that the spermatozoa displayed multiple morphological flagellar abnormalities, such as coiled, bent, irregular, and even fractured tails (Figure 2A). These morphological anomalies were confirmed more precisely by scanning electron microscopy (SEM) analysis (Figure 2B). Significantly, more subtle abnormalities, such as axoneme exposure, bending, and cracking, were further identified between the midpiece and the principal piece of the proband's spermatozoa (Figure 2B). As expected, a deranged or incomplete '9+2' microtubule structure of the flagella was observed in the proband by transmission electron microscopy (TEM) analysis (Figure 2—figure supplement 1). In addition, we detected ultrastructural defects in the spermatozoa nucleus, including irregular shapes, large vacuoles, and deformed acrosomes (Figure 2C). The mitochondria of the spermatozoa had an abnormal arrangement and enlarged diameter (Figure 2C).

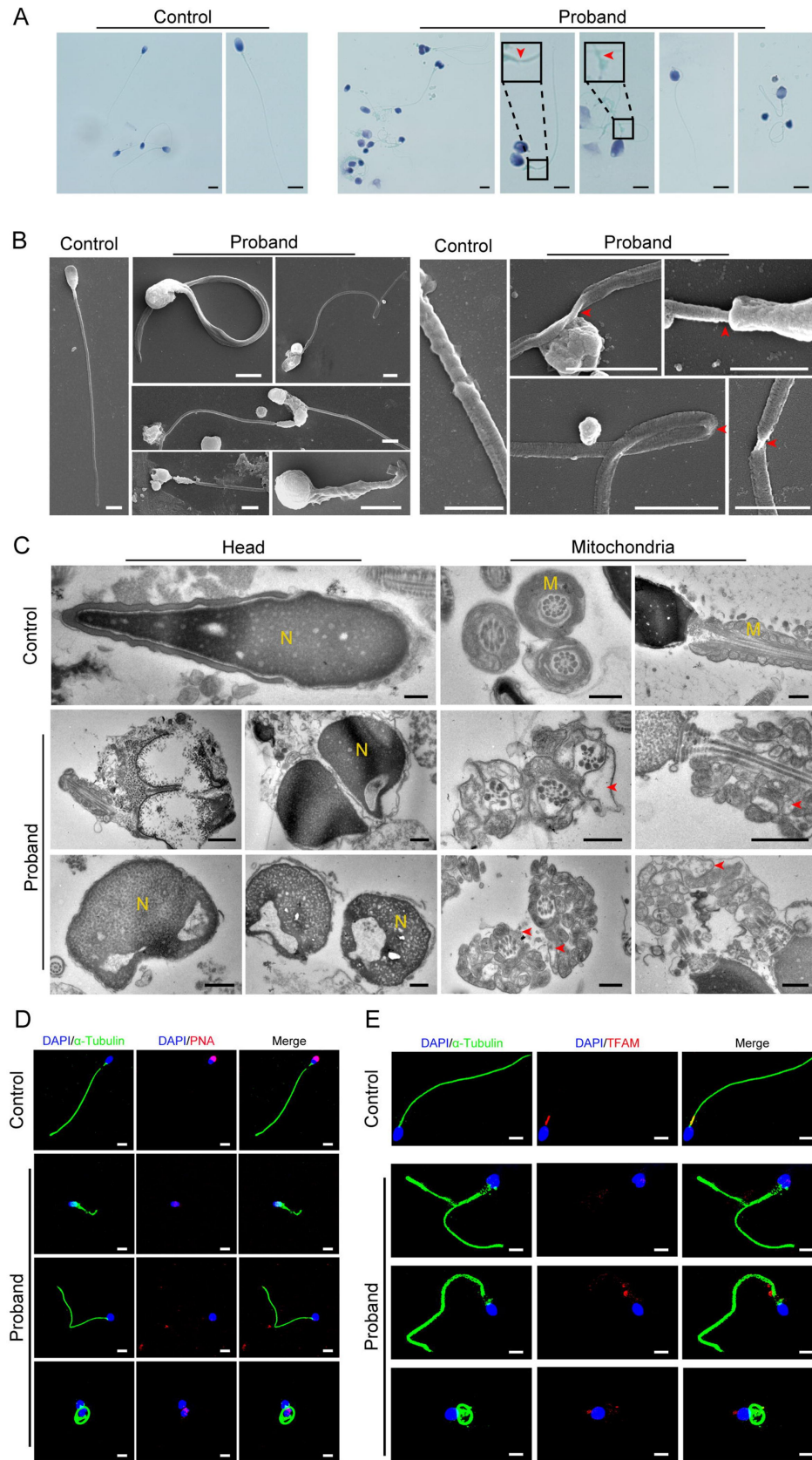
Parameter	Patient	Reference*
Sperm volume, ml	2.8	$\geq 1.5$
Sperm concentration, million/ml	10.0	$\geq 15$
Vitality, %	30	$\geq 58$
Motility, %	4	$\geq 32$
Abnormal morphology (%)	99.5	-

\*: The reference values were based on the guidelines provided in the WHO manual 5th edition (2010).

**Table 1**

**Results of the semen analysis and sperm morphology examination of the patient**





**Figure 2.**

**Abnormal flagellar morphology and defective acrosomes and mitochondria in the infertile patient.**

(**A and B**) Papanicolaou staining (A) and scanning electron microscopy (SEM) (B) results showing flagellar morphological abnormalities (scale bars in A, 5  $\mu$ m; scale bars in B, 2.5  $\mu$ m). The dotted boxes and red arrowheads denote axoneme cracking and exposure. (**C**) Transmission electron microscopy (TEM) results showing deformed acrosomes and abnormal arrangement and diameter of mitochondria (scale bars, 500 nm). The red arrowheads denote abnormal mitochondria. N, nucleus; M, mitochondria. (**D and E**) Defects in the acrosome and mitochondria were observed in the proband's sperm by PNA (D) and TFAM (E) staining (blue, DAPI; green,  $\alpha$ -Tubulin; red, PNA or TFAM; scale bars, 5  $\mu$ m). PNA, peanut agglutinin; TFAM, transcription factor A, mitochondrial.

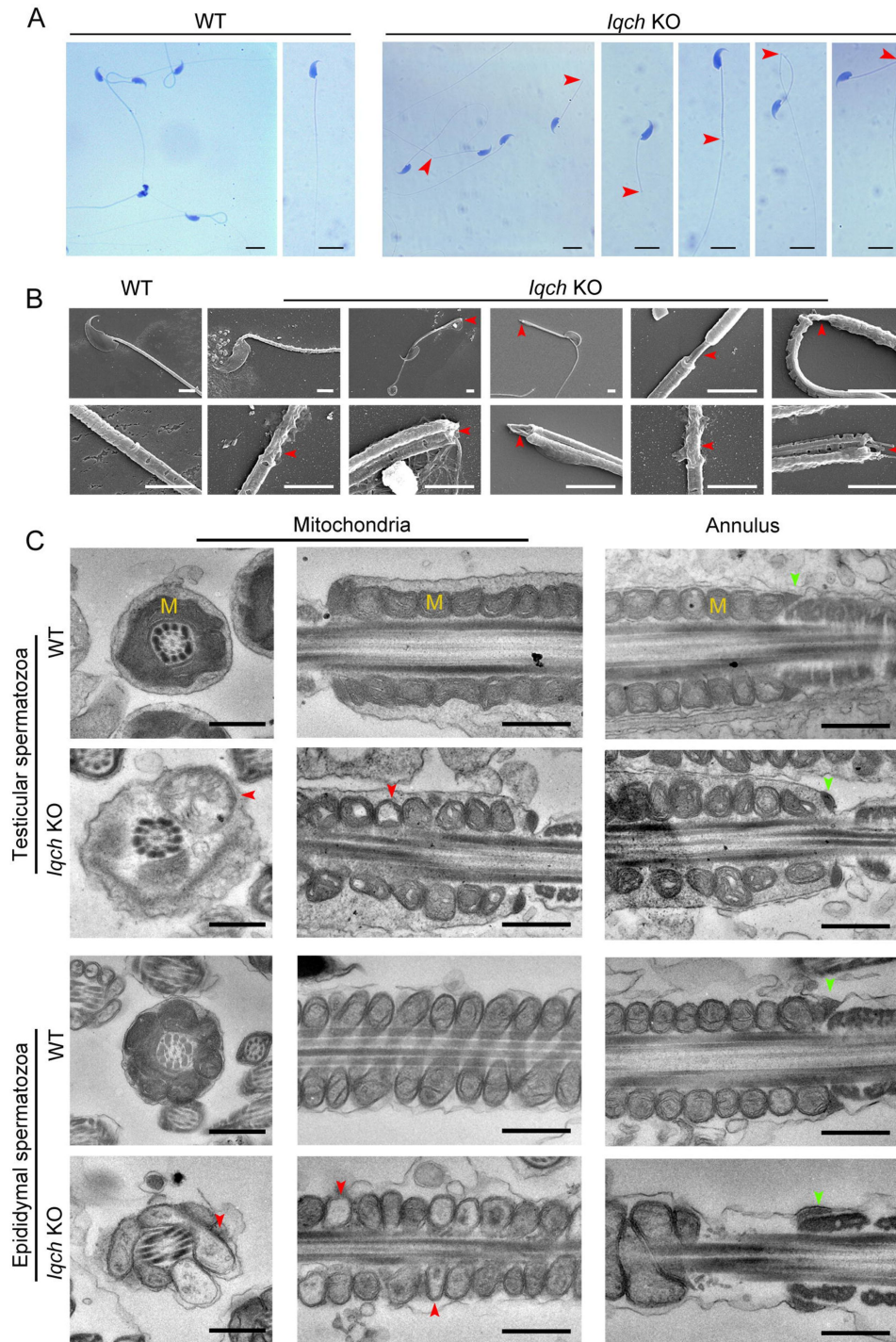
Moreover, we performed immunofluorescence staining for the marker of the acrosome (peanut agglutinin: PNA) as well as the mitochondrial marker (transcription factor A, mitochondrial: TFAM) to confirm the deficiency of the acrosomes and mitochondria in the proband's spermatozoa. The results of the PNA and TFAM staining suggested that the spermatozoa acrosomes and mitochondria were severely defective in the proband compared to the control (**Figure 2D, E**). In addition, we performed staining for SEPTIN4 (SEPT4), a functional marker of the annulus, to explore whether the flagellar fracture at the joint between the middle piece and principal piece was caused by a nonfunctional annulus. There was no significant difference in the SEPT4 signal in the spermatozoa between the proband and the control (Figure 2—figure supplement 1).

**Impairment of male fertility in mice without *Iqch***

To further elucidate the role of IQCH in male reproduction, we first explored the pattern of *Iqch* expression in mice by quantitative real-time PCR (qPCR) and found that *Iqch* was more highly expressed in the mouse testis than in other organs (Figure 3—figure supplement 1). Additionally, we investigated the temporal expression of *Iqch* in mouse testes on different postnatal days. The results revealed that the expression of *Iqch* significantly increased on postnatal day 21, peaked on postnatal day 35, and then stabilized (Figure 3—figure supplement 1). To better understand the role of IQCH in spermatogenesis, we performed immunofluorescence staining of germ cells at different developmental stages in human and mouse testes. IQCHs exhibited the same pattern in human and mouse spermatogenesis and were detected mainly in the cytoplasm of spermatocytes and round spermatids and in the flagella of late spermatids (Figure 3—figure supplement 1). The testis-enriched expression of *Iqch*/IQCH suggested its potential role in spermatogenesis.

We next generated *Iqch* knockout (KO) mice using clustered regularly interspaced short palindromic repeat (CRISPR)-Cas9 technology. We used a guide RNA targeting exons 2 through 3 of *Iqch* to achieve the knockout (Figure 3—figure supplement 2). Polymerase chain reaction (PCR), reverse transcription-PCR (RT-PCR), and western blotting further confirmed the success of the *Iqch* KO mouse construction (Figure 3—figure supplement 2). The *Iqch* KO mice showed no overt abnormalities in their development or behavior. The *Iqch* KO female mice showed normal fertility, and hematoxylin-eosin (H&E) staining further showed that the *Iqch* KO female mice had normal follicle development compared to that of the WT mice (Figure 3—figure supplement 2). However, the fertility of the KO male mice was significantly lower than that of the WT mice, as was the pregnancy rate and litter size (Figure 3—figure supplement 2). There was no detectable difference in the testis or epididymis/body weight ratio between the WT and *Iqch* KO mice (Figure 3—figure supplement 2), and the histology of the testes and epididymides in the *Iqch* KO mice showed no obvious abnormalities compared to those in the WT mice (Figure 3—figure supplement 3).





**Figure 3.**

### The absence of *Iqch* impaired spermatogenesis in mice.

(**A** and **B**) Papanicolaou staining (**B**) and SEM (**C**) results showing unmasking, bending, or cracking of the axoneme in spermatozoa from *Iqch* KO mice ( $n = 3$  biologically independent WT mice and KO mice; scale bars in **B**, 5  $\mu\text{m}$ ; scale bars in **C**, 2.5  $\mu\text{m}$ ). The red arrowheads point to axoneme abnormalities. (**C**) TEM revealing dilated intermembrane spaces of mitochondria and a normal annulus in the testicular and epididymal spermatozoa of *Iqch* KO mice ( $n = 3$  biologically independent WT mice and KO mice; scale bars, 500 nm). The red arrowheads point to the dilated intermembrane spaces of mitochondria. The green arrowheads point to the normal annulus. M, mitochondria.

However, computer-assisted sperm analysis (CASA) confirmed that sperm motility was significantly reduced in the KO mice, and the sperm count was slightly decreased (**Table 2**; Movies S1 and S2). Moreover, morphological anomalies of the sperm flagella, such as an unmasking, bending, or cracking axoneme, which recapitulated the flagellar phenotype of the infertile patient, were easily observed (**Figure 3A, B**). We further found that during the spermatogenic process, abnormalities in axoneme exposure had already occurred when the spermatozoa flagellum developed (Figure 3—figure supplement 4). Intriguingly, tail defects, including bending and cracking between the middle piece and the principal piece, were mainly present in the epididymal spermatozoa (Figure 3—figure supplement 4), suggesting that more severe flagellum breakage might occur during sperm movement.

We further performed TEM analysis to investigate the ultrastructural defects in the testicular and epididymal spermatozoa of the *Iqch* KO mice. In contrast to those of the WT mice, the spermatozoa of the *Iqch* KO mice showed dilated intermembrane spaces of mitochondria and even loss of some mitochondrial material (**Figure 3C**). However, the annulus did not significantly differ between the *Iqch* KO and WT mice (**Figure 3C**), indicating that the disruptive link between the flagellar middle piece and the principal piece might result from mitochondrial defects rather than the annulus. Immunofluorescence staining of mitochondrial markers (Solute carrier family 25 member 4: SLC25A4) and SEPT4 also revealed that the mitochondria of the spermatozoa of the *Iqch* KO mice were severely defective, and there was no significant difference in the annulus of the spermatozoa between the *Iqch* KO mice and WT mice, which was consistent with the findings of the proband (Figure 3—figure supplement 5).

### Poor in vitro fertilization (IVF) outcomes in *Iqch* KO male mice

To evaluate the cause of the impaired fertility of the *Iqch* KO male mice, mature oocytes from WT female mice in their reproductive period were retrieved and placed into culture dishes with sperm from the *Iqch* KO mice and WT mice for IVF treatment. We found that 70% of the embryos had pronuclei in the WT group, while the fertilization rate of the *Iqch* KO group was dramatically reduced, accounting for 47% (**Figure 4A**). Consequently, the percentages of both two-cell embryos and blastocysts were significantly lower in the *Iqch* KO male mice than in the WT male mice (**Figure 4A**). Noticeably, an inactive acrosome reaction was observed in most of the sperm from the *Iqch* KO mice (**Figure 4B**), leading to the inability to cross the zona pellucida (Figure 4—figure supplement 1). Furthermore, PNA staining revealed abnormal acrosome development in the different development germ cells of the *Iqch* KO mice (Figure 4—figure supplement 1). Similarly, the expression of PNA was abnormal in the mature sperm of *Iqch* KO male mice (**Figure 4C**). In the sperm of the *Iqch* KO male mice and the proband, the PLC $\zeta$  fluorescence signal was attenuated and abnormally localized (**Figure 4D**; Figure 4—figure supplement 1). Taken together, these data suggested that *Iqch* might play an important role in acrosomal formation, which is essential for fertilization.

### RNA-binding proteins are the most relevant targets by which IQCH regulates spermatogenesis

To elucidate the molecular mechanism by which IQCH regulates male fertility, we performed liquid chromatography tandem mass spectrometry (LC-MS/MS) analysis using mouse sperm lysates and detected 288 interactors of IQCH (Figure 5—source data 1). Gene Ontology (GO) analysis of the IQCH-bound proteins revealed many particularly enriched pathways related to fertilization, sperm axoneme assembly, mitochondrion organization, calcium channel, and RNA processing (**Figure 5A**). Intriguingly, 33 ribosomal proteins were identified (**Figure 5B**), indicating that IQCH might be involved in protein synthesis. Using proteomic analysis of sperm from *Iqch* KO mice, we further assessed key proteins that might be upregulated by IQCH. A total of 1,993 differentially expressed proteins were quantified, including 807 upregulated proteins and 1,186 downregulated proteins (**Figure 5C**). GO analysis revealed that the significantly downregulated

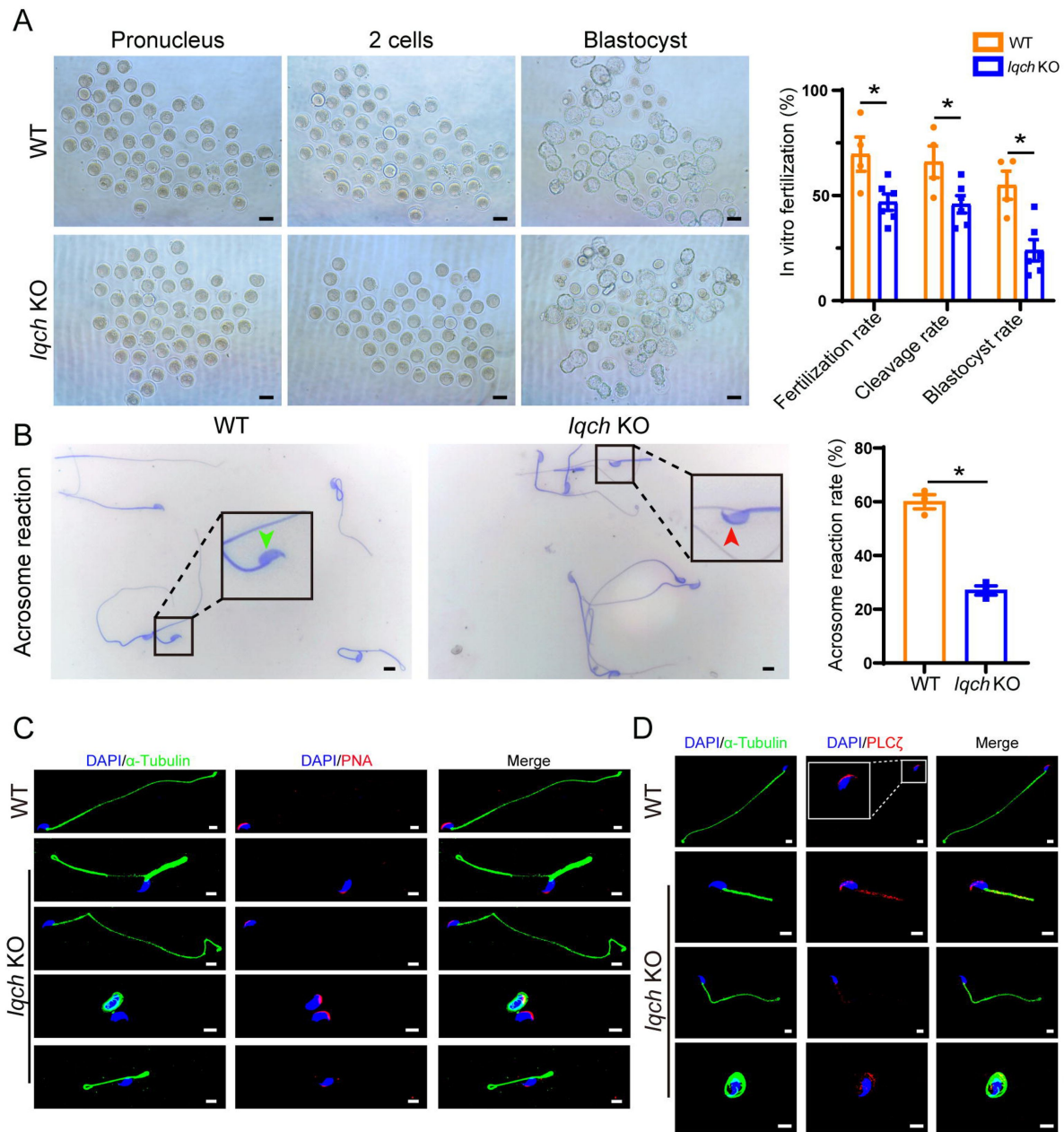
	Adult Male Mice		
	WT	KO	P <sup>b</sup> value
<b>Semen parameters</b>			
Sperm concentration (10 <sup>6</sup> /ml) <sup>a</sup>	94.51±10.68	<u>67.75±3.70</u>	0.038
Motility (%)	57.08±2.18	<u>5.49±3.25</u>	<0.001
Progressive motility (%)	57.00±2.05	<u>5.49±3.25</u>	<0.001
<b>Sperm locomotion parameters</b>			
Curvilinear velocity (VCL) (μm/s)	78.29±6.23	<u>9.94±4.03</u>	<0.001
Straight-line velocity (VSL) (μm/s)	36.18±2.09	<u>2.90±1.98</u>	<0.001
Average path velocity (VAP) (μm/s)	45.10±0.19	<u>4.17±2.49</u>	<0.001
Amplitude of lateral head displacement (ALH) (μm)	0.77±0.02	<u>0.13±0.03</u>	<0.001
Linearity (LIN)	0.46±0.01	<u>0.27±0.08</u>	0.047
Wobble (WOB, = VAP/VCL)	0.58±0.04	<u>0.40±0.08</u>	0.033
Straightness (STR, = VSL/VAP)	0.80±0.05	0.67±0.07	0.069
Beat-cross frequency (BCF) (Hz)	4.33±0.19	<u>0.65±0.26</u>	<0.001

<sup>a</sup> Epididymides and vas deferens, <sup>b</sup> two-tailed Student's t test

n = 3 biologically independent WT mice or KO mice.

**Table 2**

**Semen analysis using CASA in the mouse model of *Iqch* KO**



**Figure 4.**

#### Poor IVF treatment outcomes resulting from the use of sperm from *Iqch* KO mice.

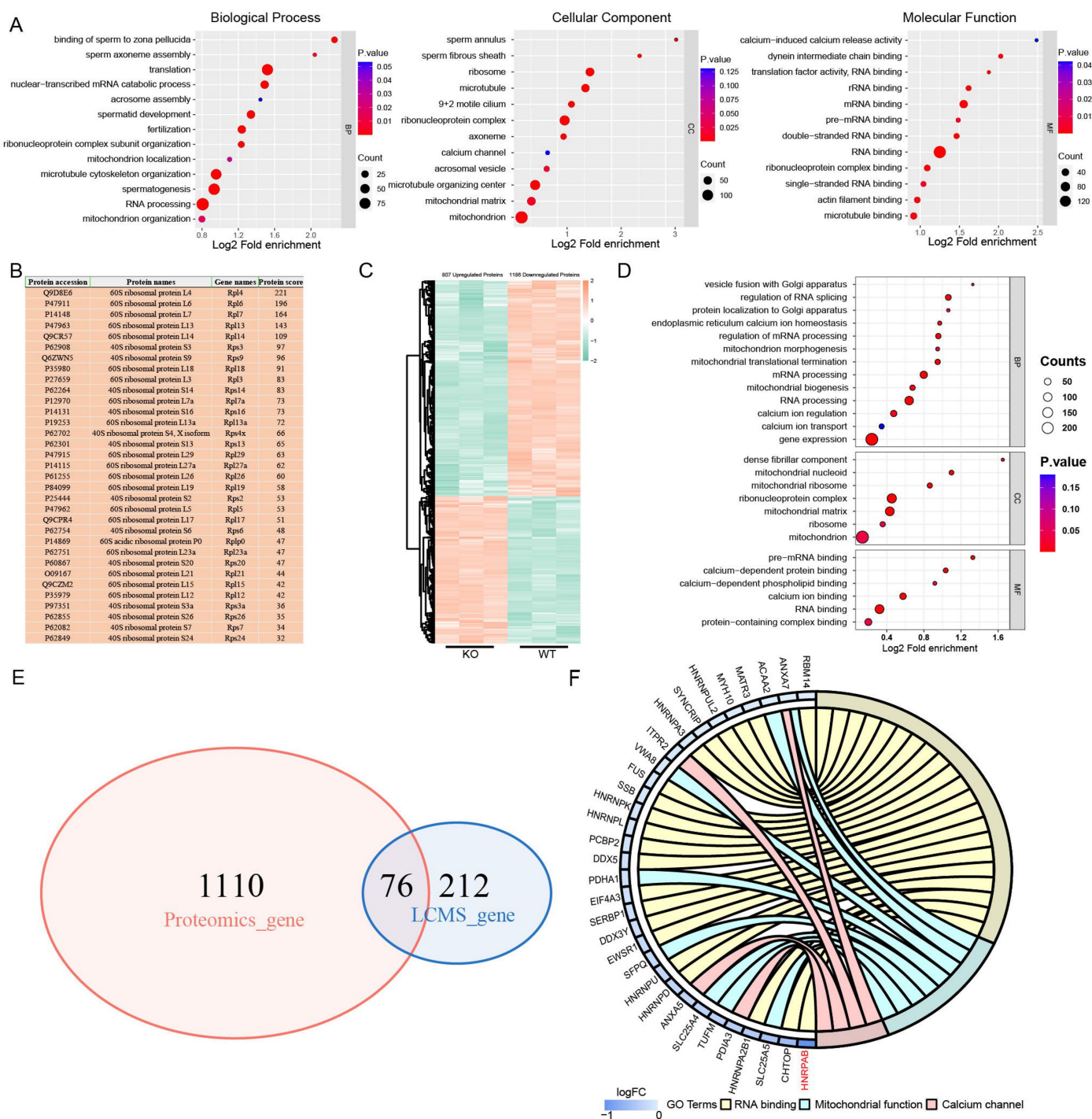
(A) Representative pronucleus embryos, two-cell embryos, and blastocysts obtained from WT mice and *Iqch* KO mice. *Iqch* KO mice exhibited significantly lower fertilization rates, cleavage rates, and blastocyst formation rates than WT mice ( $n = 3$  biologically independent WT mice and KO mice; scale bars, 100  $\mu\text{m}$ ; Student's  $t$  test;  $*p < 0.05$ ; error bars, s.e.m.). (B) The acrosome reaction rates in the capacitated spermatozoa from the WT mice and *Iqch* KO mice were determined by Coomassie brilliant blue staining. The acrosome reaction rates were reduced in the spermatozoa from the *Iqch* KO mice ( $n = 3$  biologically independent WT mice and KO mice; scale bars, 5  $\mu\text{m}$ ; Student's  $t$  test;  $*p < 0.05$ ; error bars, s.e.m.). The green arrowheads indicate the reacted acrosomes. The red arrowheads indicate intact acrosomes. (C and D) PNA (C) and PLC $\zeta$  (D) staining showing abnormal acrosome morphology and aberrant PLC $\zeta$  localization and expression in spermatozoa from *Iqch* KO mice ( $n = 3$  biologically independent WT mice and KO mice; scale bars, scale bars, 5  $\mu\text{m}$ ). The dotted box indicates the typical pattern of PLC $\zeta$  localization and expression in spermatozoa from WT mice. PNA, peanut agglutinin; PLC $\zeta$ , phospholipase C zeta 1.



proteins were enriched in RNA processing, gene expression, mitochondrion biogenesis, and calcium ion regulation (**Figure 5D**), which was consistent with the enrichment of the IQCH-bound proteins.

Importantly, cross-analysis revealed that 76 proteins were shared between the IQCH-bound proteins and the downregulated proteins in *Iqch* KO mice (**Figure 5E**), suggesting that IQCH might regulate their expression by the interaction. Among the 76 proteins, 21 were RNA-binding proteins (RBPs), 10 of which were suggested to be involved in spermatogenesis (Kuroda et al. 2000, Yang et al. 2012, Chapman et al. 2013, Fukuda et al. 2013, Legrand et al. 2019, Sechi et al. 2019, Liang et al. 2021, Tian and Petkov 2021, Wang et al. 2022, Xu et al. 2022); 8 were involved in mitochondrial function; and 4 were calcium channel activity-related proteins (**Figure 5F**). We focused on SYNCRIP, HNRNPK, FUS, EWSR1, ANXA7, SLC25A4, and HNRPAB, which play important roles in spermatogenesis. Specifically, SYNCRIP, HNRNPK, FUS, EWSR1, and HNRPAB are RBPs that are linked to spermatogenesis by controlling mRNA translation or spermatid postmeiotic transcription (Kuroda et al. 2000, Fukuda et al. 2013, Sechi et al. 2019, Tian and Petkov 2021, Xu et al. 2022). ANXA7 is a calcium-dependent phospholipid-binding protein that is a negative regulator of mitochondrial apoptosis (Du et al. 2015). Loss of SLC25A4 results in mitochondrial energy metabolism defects in mice (Graham et al. 1997). We further confirmed the binding of IQCH to these proteins by co-immunoprecipitation (co-IP) (**Figure 6A**) and confirmed the downregulation of IQCH in the sperm of *Iqch* KO mice by immunofluorescence staining and western blotting (**Figure 6B**; Figure 6—figure supplement 1 and Figure 6—figure supplement 2).

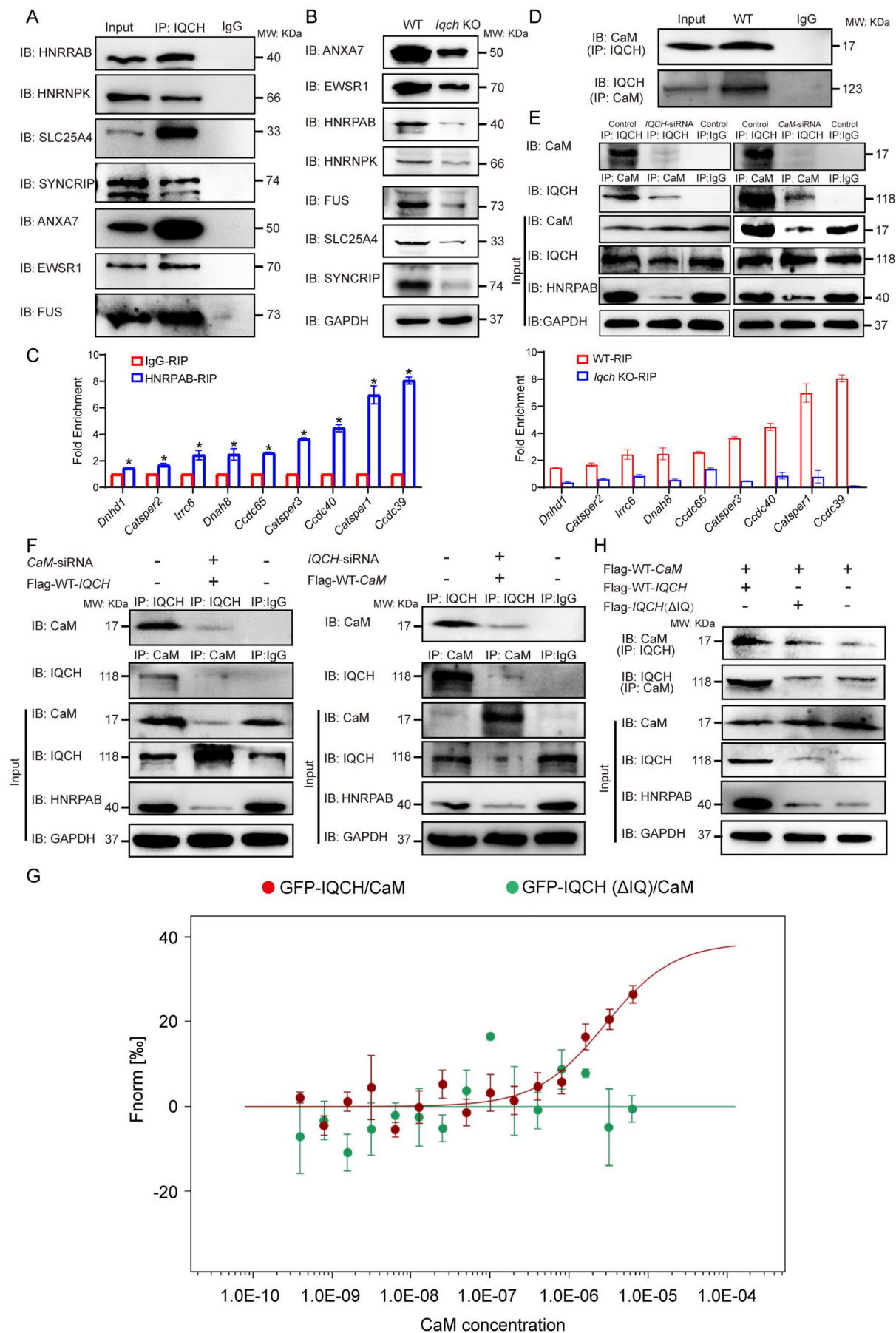




**Figure 5.**

### IQCH bound and upregulated male reproduction-related proteins in mouse sperm

(A) Bubble plots of the GO analysis showing that the IQCH-interacting proteins are significantly enriched in spermatogenesis and RNA processing in three categories: biological process, cellular component, and molecular function. GO, Gene Ontology. (B) Thirty-three ribosomal proteins interacted with IQCH in mouse sperm. (C) A heatmap showing the differential protein results from the proteomic analysis of the sperm from the WT and *Iqch* KO mice. (D) Bubble plots showing the decreased enrichment of proteins related to the spermatogenic process and RNA processing according to the GO analysis of the *Iqch* KO mice compared to the WT mice. (E) Venn diagram depicting the 76 overlapping proteins among the 1186 downregulated proteins in sperm from *Iqch* KO mice and the 288 proteins that bind to IQCH. (F) Chord diagram showing 21 proteins involved in RNA binding, 8 proteins involved in mitochondrial function, and 4 proteins involved in calcium channel activity among the 76 overlapping proteins. HNRPA28 showed the greatest reduction in expression in the *Iqch* KO mice.



**Figure 6.**

**IQCH interacted with CaM to regulate HNRPAB expression and spermatogenesis.**

(A) co-IP of mouse sperm lysates revealed that the seven proteins most relevant to the phenotype of the *Iqch* KO mice were associated with IQCH. (B) Western blotting showing the reduced expression of the seven proteins in the sperm from the *Iqch* KO mice compared to the WT mice. (C) qPCR analysis of RNA immunoprecipitation (RIP) using HNRPAB antibodies and IgG antibodies on mouse sperm lysates showed that HNRPAB interacted with several RNAs associated with fertilization and axoneme assembly. qPCR analysis of RIP in the sperm lysates from the *Iqch* KO mice revealed a decrease in the interaction between HNRPAB and the RNA targets compared to that in the WT mice (Student's t test; \* $p < 0.05$ ; error bars, s.e.m.). (D) co-IP assays showing the binding of IQCH and CaM in WT sperm. (E) co-IP assays showed that the decreased expression of HNRPAB was due to the reduced binding of IQCH to CaM resulting from the knockdown of IQCH or CaM. (F) The overexpression of IQCH and the simultaneous knockdown of CaM or the overexpression of CaM and the simultaneous knockdown of IQCH in K562 cells further confirmed that the downregulation of HNRPAB was due to the diminished interaction between IQCH and CaM, as determined by western blotting analysis. (G) Analysis of the binding affinity between GFP-IQCH from the cell lysates (target) and recombinant CaM (ligand) by a microscale thermophoresis (MST) assay showing the interaction between IQCH and CaM. Their interaction was disrupted after deletion of the IQ motif within IQCH. (H) co-IP of HEK293 cells cotransfected with the WT-IQCH and WT-CaM plasmids, cotransfected with the IQCH ( $\Delta$ IQ) and WT-CaM plasmids, or cotransfected with the control and WT-CaM plasmids showed that CaM interacted with the IQ motif. The downregulation of HNRPAB was due to the disrupted interaction between IQCH and CaM. Three independent experiments were performed.

Among these interactors of IQCH, HNRPAB was the most significantly downregulated protein according to proteomic analysis (Figure 5—source data 2), implying that HNRPAB might be the main target of IQCH. As an RBP, HNRPAB has been suggested to play an important role in spermatogenesis by regulating the translation of testicular mRNAs (Fukuda et al. 2013). We thus employed RNA-seq analysis of sperm from *Iqch* KO and WT mice to investigate the effects on RNA levels in the absence of IQCH. Importantly, among the downregulated genes, most were related to male fertility, such as axoneme assembly, spermatid differentiation, flagellated sperm motility, and fertilization (Figure 6—figure supplement 3). We hypothesized that this downregulation is linked to HNRPAB binding. Considering the disrupted fertilization and axoneme assembly in *Iqch* KO mice, we selected the essential molecules involved in these two processes, *Catsper1*, *Catsper2*, *Catsper3*, *Ccdc40*, *Ccdc39*, *Ccdc65*, *Dnah8*, *Irrc6*, and *Dnhd1*, to confirm our speculation. We carried out RNA immunoprecipitation on formaldehyde-crosslinked sperm followed by qPCR to evaluate the interactions between HNRPAB and *Catsper1*, *Catsper2*, *Catsper3*, *Ccdc40*, *Ccdc39*, *Ccdc65*, *Dnah8*, *Irrc6*, and *Dnhd1* in KO and WT mice. As expected, binding between HNRPAB and important molecules was detected in the WT mice (Figure 6C), supporting the functional role of HNRPAB in testicular mRNAs. Intriguingly, significantly decreased interactions between HNRPAB and those molecules were observed in the KO mice (Figure 6C). Therefore, IQCH is involved in spermatogenesis mainly by regulating RBPs, especially HNRPAB, to further mediate essential mRNA expression in the testis.

## The interaction of IQCH with CaM is a prerequisite for IQCH function

Given that IQCH is a calmodulin-binding protein, we hypothesized that IQCH regulates these key molecules by interacting with CaM (Figure 6—figure supplement 4). As expected, CaM interacted with IQCH, as indicated by LC-MS/MS analysis. We initially confirmed the binding of IQCH and CaM in WT sperm by co-IP (Figure 6D). In addition, their colocalization was detected during spermatogenesis by immunofluorescence staining (Figure 6—figure supplement 4).

We further confirmed the binding of IQCH to CaM in K562 cells, which express both IQCH and CaM (**Figure 6E**). Moreover, a decrease in HNRPAB expression was observed when IQCH or CaM was knocked down (**Figure 6E**; Figure 6—figure supplement 2 and Figure 6—figure supplement 4), suggesting that IQCH or CaM might regulate HNRPAB expression. We then overexpressed IQCH and knocked down CaM or overexpressed CaM and knocked down IQCH in K562 cells and found that the reduced HNRPAB expression could not be rescued in either of these two situations (**Figure 6F**; Figure 6—figure supplement 2 and Figure 6—figure supplement 4), indicating that CaM or IQCH alone cannot mediate HNRPAB expression. These findings suggested that HNRPAB expression might be regulated by the interaction of IQCH with CaM.

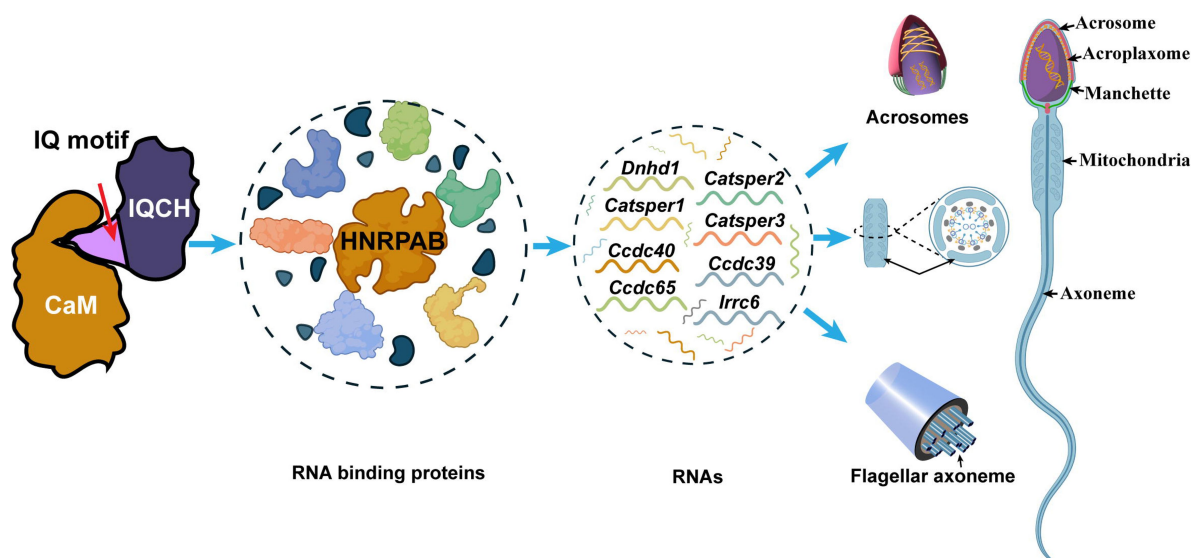
Using a microscale thermophoresis (MST) assay, we further confirmed that the IQ motif of IQCH is required for CaM binding. The binding affinity between IQCH (target) from cell lysates overexpressing GFP-IQCH plasmids and recombinant CaM (ligand) increased with increasing concentrations of recombinant CaM (**Figure 6G**). However, their binding was disrupted when the IQ motif of IQCH was deleted (**Figure 6G**). co-IP assays verified the above findings (**Figure 6H**; Figure 6—figure supplement 2). Not surprisingly, the expression of HNRPAB in cells cotransfected with the *IQCH* ( $\Delta$ IQ)/CaM plasmid and the control/CaM plasmid was similar but was lower than that in cells overexpressing the WT-IQCH and CaM plasmids (**Figure 6H**; Figure 6—figure supplement 2). Collectively, our findings suggest that IQCH interacts with CaM via the IQ motif to manipulate the expression of important molecules, especially HNRPAB, to play a role in spermatogenesis (**Figure 7**).

## Discussion

Throughout the evolution of divergent species, IQCH has been conserved, indicating its fundamental role in organisms. As a novel CaM-binding protein, IQCH was first identified in human and mouse testes and exclusively localized in spermatocytes and spermatids, suggesting its potential activity in spermatogenesis (Yin et al. 2005). However, since IQCH was identified, no other findings have supported its function in male reproduction. In this study, we found that the *IQCH* mutation impaired male fertility, as indicated by flagellar morphological abnormalities and axoneme cracking. An aberrant ultrastructure in sperm with the *IQCH* mutation was associated with severe defects in acrosomes and mitochondria. Furthermore, *Iqch* KO mice exhibited similar irregularities in the flagellum, especially the axoneme and mitochondria. We also found that *Iqch* KO mice exhibited different degrees of functional defects in acrosomes. Thus, our work supported the vital role of IQCH in flagellar and acrosome development.

To date, only four IQ motif-containing proteins, IQCD, IQCF1, IQCG, and IQCN, have been suggested to participate in spermatogenesis (Harris et al. 2014, Fang et al. 2015, Zhang et al. 2019, Dai et al. 2022). Most IQ motif-containing proteins function in  $\text{Ca}^{2+}$ -dependent biological processes by binding to CaM (Chen et al. 2014, Harris et al. 2014, Fang et al. 2015); thus, IQCD, IQCF1, and IQCN are involved in fertilization and are relevant to the acrosome reaction, sperm capacitation, or manchette assembly (Fang et al. 2015, Zhang et al. 2019, Dai et al. 2022). In addition, because CaM has an impact on the actin cytoskeleton, *Iqcg* KO mice exhibit detachment of sperm heads from tails (Harris et al. 2014). In our study, the *Iqch* KO mice also showed an impaired acrosome reaction, which caused reduced fertilization. Intriguingly, axoneme breaks at the annulus and mitochondrial defects were prominent in the flagella of the *Iqch* KO mice, whose phenotypes were unexplored in the previously discovered IQ motif-containing proteins. Because CaM activation can stimulate changes in the actin cytoskeleton, it is reasonable that flagellum formation is defective when IQCH is absent.  $\text{Ca}^{2+}$  is a key player in the regulation of mitochondrial functions (Bravo-Sagua et al. 2017). Thus, the absence of IQCH leads to a failure of interaction with CaM and disruption of normal  $\text{Ca}^{2+}$  signaling, which consequently causes mitochondrial





**Figure 7.**

**Proposed model for the mechanisms underlying the involvement of IQCH in spermatogenesis.**

IQCH interacts with CaM via the IQ motif to regulate the expression of RNA-binding proteins. RNA binding proteins, particularly HNRPAB, bind and regulate several RNAs that influence the development of the acrosome, mitochondria, and axoneme, thereby playing a critical role in spermatogenesis.



defects in *Iqch* KO mice and patients with *IQCH* variants. Our findings suggested that fertilization is the main action of IQ motif-containing proteins, and each specific IQ motif-containing protein also has its own distinct role in spermatogenesis.

However, there are few publications regarding the underlying mechanism by which IQ motif-containing proteins manipulate reproductive processes, except for a recent study showing that IQCN interacts with CaM to regulate the expression of CaM-binding proteins, including manchette-related proteins (LZTFL1, KIF27, and RSPH6A), IFT family proteins and their motor proteins (IFT22, IFT43, IFT74, IFT81, IFT140, IFT172, WDR19, TTC21B, and DYNC2H1), and ribosomal protein family proteins (RPS5, RPS25, RPS27, and RPSA) (Dai et al. 2022 [DOI](#)). In our study, IQCH was shown to regulate the expression of RBPs via interactions with these proteins. RBPs are a large class of proteins that assemble with RNAs to form ribonucleoproteins (RNPs). RBPs function at various stages of RNA processing, including alternative splicing, RNA modification, nuclear export, localization, stability, and translation efficiency (Corley et al. 2020 [DOI](#)). RNA processing in male reproductive biology is essential for the production of mature sperm, and many RBPs have been demonstrated to be indispensable during spermatogenesis (Morgan et al. 2021 [DOI](#)). Among the RBPs, HNRPAB, a heterogeneous nuclear RNP, showed the most significant reduction among the downregulated interactors of IQCH, suggesting that HNRPAB might be the most important downstream effector protein of IQCH. It has been reported that HNRPAB plays a central role in spermatogenesis by regulating stage-specific translation of testicular mRNAs (Fukuda et al. 2013 [DOI](#)). As expected, a RIP assay using an anti-HNRPAB antibody revealed binding between HNRPAB and the mRNAs of several important genes (*Catsper1*, *Catsper2*, *Catsper3*, *Ccdc40*, *Ccdc39*, *Ccdc65*, *Dnah8*, *Irrc6*, and *Dnhd1*) involved in spermatogenesis. We further found that the interaction between IQCH and CaM is a prerequisite for regulating HNRPAB expression. We thus hypothesized that IQCH regulates male fertility by binding to CaM and controlling HNRPAB to manipulate the expression of key mRNAs involved in spermatogenesis.

In conclusion, our study identified a novel IQ motif-containing protein-coding gene, *IQCH/Iqch*, which is responsible for spermatogenesis in humans and mice, broadening the scope of known male infertility-associated genes and thus further illustrating the genetic landscape of this disease. In addition, our study suggested an unexplored mechanism in which IQCH regulates the expression of key RBPs involved in spermatogenesis, especially HNRPAB, by interacting with CaM to play crucial roles in fertilization and axoneme assembly. We believe that our findings will provide genetic diagnostic markers and potential therapeutic targets for infertile males with *IQCH* pathogenic variants.

## Materials and Methods

### Study participants

A family with male infertility was recruited from West China Second University Hospital, and healthy Chinese volunteers were enrolled as controls. The study was conducted according to the tenets of the Declaration of Helsinki, and ethical approval was obtained from the Ethical Review Board of West China Second University Hospital, Sichuan University. Each subject signed an informed consent form.

### WES and Sanger sequencing

Peripheral blood samples were obtained from all subjects, and genomic DNA was extracted using a QIAamp DNA Blood Mini Kit (QIAGEN, Germany; 51126). The exomes of the subjects were captured by Agilent SureSelect Human All Exon V6 Enrichment kits (Agilent, CA, USA) and then sequenced on a HiSeq X-TEN system (Illumina, CA, USA). All reads were mapped to the human reference sequence (UCSC Genome Browser hg19) using Burrows–Wheeler Alignment. After quality filtration with the Genome Analysis Toolkit, functional annotation was performed using

ANNOVAR through a series of databases, including the 1000 Genomes Project, dbSNP, HGMD, and ExAC. PolyPhen-2, SIFT, MutationTaster, and CADD were used for functional prediction. Variant verification of *IQCH* in patients was confirmed by Sanger sequencing using the primers listed in Figure 1-source data 1.

## Minigene assay

A minigene splicing assay was used to explore the effect of the *IQCH* variant (c.387+1\_387+10del) on splicing. The WT-*IQCH* and Mut-*IQCH* sequences, including intron 3, exon 4, and intron 4, were PCR-amplified separately from the genomic DNA of the control and patient. The two amplified fragments were cloned and inserted into the minigene vector pSPL3 between the EcoRI and BamHI sites through the Basic Seamless Cloning and Assembly Kit (TransGen Biotech, China, CU201-02). After transfection into HEK293T cells by DNA and siRNA transfection reagent (Polypus, France, 101000046), the splicing patterns of the transcripts produced from the WT-*IQCH* and Mut-*IQCH* plasmids were analyzed by RT-PCR, gel electrophoresis, and Sanger sequencing. The primers used for plasmid genomic amplification and RT-PCR are listed in Figure 1-source data 1.

## *Iqch* knockout mice

The animal experiments were approved by the Experimental Animal Management and Ethics Committee of West China Second University Hospital, Sichuan University. All animal procedures complied with the guidelines of the Animal Care and Use Committee of Sichuan University. The mouse *Iqch* gene has 6 transcripts and is located on chromosome 9. According to the structure of the *Iqch* gene, exons 2~3 of the *Iqch-201* (ENSMUST00000042322.10) transcript were recommended as the knockout region. The region contains a 215 bp coding sequence, and deletion of this region was expected to disrupt *IQCH* protein function. The sgRNA sequences synthesized by Sangon Biotech (Shanghai, China) are listed in Figure 3-source data 1. The two complementary DNA oligos of each sgRNA target were annealed and ligated to the pUC57-sgRNA plasmid (Addgene, USA) for cloning. The recombinant plasmid was transformed into DH5α competent cells, and positive clones were screened based on kanamycin resistance and sequencing. The recombinant plasmid was linearized and purified by phenol-chloroform extraction. In vitro transcription of the sgRNAs was performed using the MEGAshortscript Kit (Ambion, USA, AM1354), and the sgRNAs were purified using the MEGAclear Kit (Ambion, USA, AM1908). Cas9 mRNA was purchased from TriLink BioTechnologies. The mouse zygotes were coinjected with an RNA mixture of Cas9 mRNA (~50 ng/μl) and sgRNA (~30 ng/μl).

The injected zygotes were transferred into pseudopregnant recipients to obtain the F0 generation. DNA was extracted from the tail tissues of the 7-day-old offspring, and PCR amplification was carried out with genotyping primers. A stable F1 generation (heterozygous mice) was obtained by mating the positive F0 generation mice with wild-type (WT) C57BL/6JG-pt mice. The primers used for genotyping are listed in Figure 3-source data 1.

## Mouse fertility testing

To confirm the fertility of the *Iqch* KO male mice, natural mating tests were conducted. Briefly, six *Iqch* KO and six littermate WT sexually mature male mice (8-12 weeks old) were paired with two 6- to 8-week-old normal C57BL/6J females (each male was mated with two female mice) for 6 months. Regarding the fertility of *Iqch* KO female mice, WT (n=15) and *Iqch* KO (n=9) females were mated with WT males for 6 months. The presence of vaginal plugs was used as indicator of successful mating and reproductive behavior. The vaginal plugs of the mice were examined every morning. Female mice with vaginal plugs were fed separately, and the number of pups per litter was recorded on the day of birth.

## Ivf

Eight-week-old C57BL/6J female mice were superovulated by injecting 5 IU of pregnant mare serum gonadotropin (PMSG) followed by 5 IU of human chorionic gonadotropin (hCG) 48 h later. Sperm were released from the cauda epididymis of 10-week-old male mice, and sperm capacitation was performed for 50 min using test yolk buffer with HEPES (TYH) solution. Cumulus-oocyte complexes (COCs) were obtained from the ampulla of the uterine tube 14 h after hCG injection. The ampulla was torn with a syringe needle, and the COCs were gently squeezed onto liquid drops of human fallopian tube fluid (HTF) medium. The COCs were then incubated with ~5  $\mu$ l of the sperm suspension in HTF liquid drops at 37 °C under 5% CO<sub>2</sub>. After 6 h, the eggs were washed several times using HTF medium to remove cumulus cells and then transferred to liquid drops of potassium simplex optimized medium (KSOM).

## Acrosome reaction analysis

The spermatozoa were collected from the cauda epididymis and capacitated for 50 min in TYH medium at 37 °C under 5% CO<sub>2</sub>. Highly motile sperm were collected from the upper portion of the medium, and 10  $\mu$ M calcium ionophore A23187 (Sigma-Aldrich, CA, USA, C7522) was added to induce the acrosome reaction. After 15 min, the spermatozoa were spotted on a glass microscope slide, dried, and fixed with 4% paraformaldehyde (PFA) for 10 min. The acrosomes were stained with Coomassie brilliant blue.

## H&E staining

For staining of the testicular tissues, samples were dissected from the adult mice and fixed in 4% PFA overnight at 4 °C. The fixed tissues were embedded in paraffin, sectioned (5  $\mu$ m thick), dewaxed, and rehydrated. The testis sections were stained with hematoxylin and eosin solution (Beyotime, Shanghai, China, C0105M) before imaging using a microscope (Leica, Germany).

## Immunofluorescence staining

For sperm immunostaining, fresh sperm samples were fixed with 4% PFA for 20 min at room temperature. For the staining of the testis tissues, heat-induced antigen retrieval was performed in citrate antigen retrieval solution (Beyotime, Shanghai, China, P0081) according to the manufacturer's instructions. After permeabilization with 1% Triton X-100 for 30 min, the sperm slides were blocked with 5% bovine serum albumin serum for 1 h at room temperature. Primary antibodies were added to the slides, which were then incubated overnight at 4 °C. After washing three times with PBS, the slides were incubated with secondary antibodies for 1 h at room temperature. The nuclei were counterstained with DAPI dye (Sigma-Aldrich, CA, USA, 28718-90-3) and mounted with antifade mounting medium. Images were captured with a laser-scanning confocal microscope (Olympus, Japan). Detailed information on the antibodies is provided in Figure 6-source data 2.

## qPCR

Total RNA was extracted from mouse testes using an RNA Easy Fast Tissue/Cell Kit (Tiangen Biotech, China, 4992732). Approximately 0.3 mg of total RNA was converted into cDNA with the PrimeScript RT Reagent Kit (Takara, Japan, RR037A) according to the manufacturer's instructions. The cDNAs were individually diluted 10-fold for use as templates for subsequent qPCR with iTaq Universal SYBR Green Supermix (Bio-Rad Laboratories, USA, 1725124). Mouse *Gapdh* was used as an internal control. The mRNA expression of the detected targets was quantified according to the  $2^{-\Delta\Delta C_t}$  method. The primers used for qPCR are listed in Figure 3-source data 1 and Figure 6-source data 1.

## Papanicolaou staining

Semen samples were fixed in 4% paraformaldehyde, and the coated slides were air-dried before being rehydrated with 80%, 70%, and 50% ethanol and distilled water. The samples were then stained with Lea's hematoxylin, rinsed with distilled water, and stained with G-6 orange stain and EA-50. Following staining, the slides were dehydrated with ethanol and mounted.

## Sem

The spermatozoa were fixed in 2.5% phosphate-buffered glutaraldehyde (GA) (Zhongjingkeyi Technology, Beijing, China) at room temperature for 30 min and then deposited on coverslips. The coverslips were dehydrated via an ascending gradient of 50%, 70%, 95%, and 100% ethanol and air-dried. The specimens were then attached to specimen holders and coated with gold particles using an ion sputter coater before being viewed with a JSM-IT300 scanning electron microscope (JEOL, Tokyo, Japan).

## Tem

The precipitate of the spermatozoa was fixed with 2.5% (vol/vol) glutaraldehyde in 0.1 M phosphate buffer (PB) (pH 7.4) and washed two times in PB and two times in ddH<sub>2</sub>O. Then, the tissues were immersed in 1% (wt/vol) OsO<sub>4</sub> and 1.5% (wt/vol) potassium ferricyanide aqueous solution at 4 °C for 2 h. After washing, the samples were dehydrated through graded alcohol (30%, 50%, 70%, 80%, 90%, 100%, 10 min each) in pure acetone (10 min twice). The samples were then infiltrated in a graded mixture (3:1, 1:1, 1:3) of acetone and SPI-PON812 resin (21 ml of SPO-PON812, 13 ml of DDSA and 11 ml of NMA), and then the pure resin was changed. The specimens were embedded in pure resin with 1.5% BDMA and polymerized for 12 h at 45 °C and 48 h at 60 °C. Ultrathin sections (70 nm thick) were cut with a microtome (Leica EM UC6, Germany), double-stained with uranyl acetate and lead citrate, and examined by a transmission electron microscope (TECNAI G2 F20, Philips, USA).

## Proteomic quantification

Proteins were extracted from the sperm samples using radioimmunoprecipitation assay (RIPA) lysis buffer (Applygen, Beijing, China, C1053) supplemented with 1 mM phenylmethanesulfonyl fluoride (PMSF) and protease inhibitors on ice. The supernatants were collected following centrifugation at 12,000 × g for 20 min. Protein concentrations were calculated by Bradford quantification and sodium dodecyl sulfate–polyacrylamide gel electrophoresis (SDS–PAGE). An enzyme solution at a ratio of 1:20 of trypsin enzyme (μg) to substrate protein (μg) was added to 100 μg of the protein samples, which were subsequently vortexed, centrifuged at low speed for 1 min, and incubated at 37 °C for 4 h. The peptide liquid obtained after salt removal was freeze-dried. The peptide sample was dissolved in 0.5 M TEAB, added to the corresponding iTRAQ labeling reagent and stored at room temperature for 2 h. The Shimadzu LC-20AB liquid phase system was used for purification, and the separation column was a 5 μm 4.6 × 250 mm Gemini C18 column for liquid phase separation of the sample. The dried peptide samples were reconstituted with mobile phase A (2% can, 0.1% FA) and centrifuged at 20,000 × g for 10 min, after which the supernatant was collected for injection. The separation was performed by an UltiMate 3000 UHPLC (Thermo Fisher). The sample was first enriched in a trap column, desalted and then placed into a self-packed C18 column. The peptides separated by liquid phase chromatography were ionized by a nanoESI source and then passed to a Q Exactive HF X tandem mass spectrometer (Thermo Fisher) for DDA (data-dependent acquisition) mode detection. The raw data were converted to mgf files for bioinformatics analysis, and protein identification from tandem mass spectra was performed by database searching (UniProt). The protein quantification process included the following steps: protein identification, tag impurity correction, data normalization, missing value imputation,

protein ratio calculation, statistical analysis, and results presentation. Proteins with a 1.5-fold change and a *p* value (using Student's *t* test) less than 0.05 were defined as differentially expressed proteins.

## RNA sequencing

Total RNA (~1 µg) was isolated from fresh spermatozoa from the WT mice (*n*=3) and the *Iqch* KO mice (*n*=3) using the RNAsimple Total RNA Kit (Tiangen Biotech, China, 4992858). A Ribo-Zero™ rRNA Removal Kit (MRZPL1224, Illumina) was used to remove rRNA from the samples. RNA integrity was evaluated using an Agilent 2100 Bioanalyzer system (Agilent Technologies). An mRNA sequencing library for RNA-seq was constructed using the TruSeq RNA Library Prep Kit v2 (RS-122-2001, Illumina), followed by paired-end (2×100bp) sequencing using the Illumina HiSeq 4000 Sequencing System (Illumina) at the Beijing Genomics Institute. The raw paired-end reads were filtered through a FASTX-Toolkit filter. The quality of the reads was confirmed by FastQC (ver: 0.11.3). The raw data (raw reads) in the fastq format were processed through in-house Perl scripts. The feature counts (ver: 1.5.0-p3) were used to count the read numbers mapped to each gene. The fragments per kilobase million (FPKM) of each gene were calculated based on the length of the gene and the read count mapped to the gene. Signaling pathway matching analysis for the list of differentially expressed genes (DEGs) was performed using the Kyoto Encyclopedia of Genes and Genomes (KEGG) Mapper (<https://www.genome.jp/kegg/>). The mapping of GO to DEGs was carried out using Blast2GO (ver: 4.1.9).

## LC-MS/MS analysis

Immunoprecipitation (IP) of IQCH was conducted using 5 µg of IQCH antibody (the rabbit polyclonal IQCH antibody was synthesized using the immunogen KAEAAATKIATWKSYSYKARSSFISYRQKKWA). The eluents obtained from IP were collected for subsequent LC-MS analysis utilizing a Q Exactive™ HF-X mass spectrometer (Thermo Fisher) equipped with a nanoelectrospray ion source at Jingjie PTM BioLabs. The raw data files were queried against the *Mus\_musculus\_10090\_SP\_20210721.fasta* database, which contains 17,089 entries. The search employed MaxQuant (v1.6.15.0) and its integrated Andromeda search engine, utilizing default settings, to identify proteins and ascertain their respective label-free quantification (LFQ) values. The LC-MS results underwent two main processing steps: (i) exclusion of contaminant proteins, reverse sequences, and proteins identified solely by site and (ii) normalization of LFQ intensity. The normalization utilized the median of commonly identified proteins in the sample, with missing values imputed by the minimum value.

## Western blotting and co-IP

Proteins were extracted from cultured cells and mouse sperm using RIPA lysis buffer supplemented with 1 mM PMSF and protease inhibitors (Applygen, Beijing, China, P1265) on ice. The supernatants were collected following centrifugation at 12,000 × *g* for 20 min. The proteins were electrophoresed on 10% SDS-PAGE gels and transferred to nitrocellulose membranes (GE Healthcare). The blots were blocked in 5% milk and incubated with primary antibodies overnight at 4 °C, followed by incubation with anti-rabbit or anti-mouse IgG heavy and light chain (H&L) (horseradish peroxidase, HRP) (Abmart, Shanghai, China, M21002 and M21001) at a 1/10,000 dilution for 1 h. The signals were evaluated using Super ECL Plus western blotting Substrate (Applygen, Beijing, China, P1050) and a Tanon-5200 Multi chemiluminescence imaging system (Tanon, Shanghai, China).

For the co-IP assays, the extracted proteins were incubated with primary antibodies overnight at 4 °C. The lysates were then incubated with 20 µl of Pierce™ Protein A/G-conjugated Agarose for 2 h at room temperature. The beads were washed with washing buffer [50 mM Tris-HCl (pH 7.4), 0.1% Triton X-100, and 500 mM NaCl], eluted with 1.2×SDS loading buffer, and boiled for 5 min at 95 °C.



Finally, the products were separated via SDS-PAGE and analyzed by immunoblotting. Detailed information on the antibodies used in the western blotting experiments is provided in Figure 6—source data 2.

## Antibody production

The peptide used for raising the anti-IQCH antibody was derived from amino acid residues 406–435 (KAEAATKIQTWKSYSYKARSSFISYRQKKWA) of mouse IQCH. The peptide coupled with keyhole limpet hemocyanin (KLH) (Sigma-Aldrich, USA, H7017) was dissolved in saline, emulsified with 1 ml of Freund's complete adjuvant (Beyotime, China, P2036), and injected at multiple sites on the backs of New Zealand white rabbits. The antiserum was collected within 2 weeks after the final injection.

## Cell culture and transfection

We purchased K562 cells (CRL-3344) and HEK293T cells (CRL-11268) from the American Type Culture Collection. The K562 cell line is a human leukemia cell line showing high expression levels of IQCH and CaM and was used for the knockdown experiments. K562 cells were cultured in Basic Roswell Park Memorial Institute 1640 Medium (Gibco, USA, C11875500BT) supplemented with 10% fetal bovine serum (Gibco, USA, 12483020). HEK293T cells were cultured in Dulbecco's modified Eagle medium (Gibco, USA, 11965092) supplemented with 10% fetal bovine serum (Gibco, USA, 12483020). The expression plasmids pcDNA3.1-Flag-CALM2, pCMV-MCS-3\* flag-WT-IQCH, and pCMV-MCS-3\* flag-IQCH ( $\Delta$ IQ) and small interfering RNAs (siRNAs) targeting CALM2 and IQCH were constructed by Vigene Biosciences (Jinan, China). The sequences of the siRNAs used are listed in Figure 6—source data 1. The plasmids and siRNAs were transfected into cells with jetPRIME transfection reagents (Polypus, France, 101000046) according to the manufacturer's protocol.

## MST assay

The MST experiments were conducted on a Monolith NT.115 system (NanoTemper Technologies, Germany). Lysates of the HEK293T cells transfected with fluorescent GFP-IQCH or GFP-IQCH( $\Delta$ IQ) were normalized by raw fluorescence (count), diluted using MST buffer (50 mM Tris-HCl pH 7.5, 150 mM NaCl, 10 mM MgCl<sub>2</sub>, 0.05% (v/v) Tween 20), and added to 16 PCR tubes (10  $\mu$ l per tube). Then, the purified CaM was diluted into 16 gradients using MST buffer. Ten microliters of different concentrations of CaM were mixed with 10  $\mu$ l of fluorescent GFP-IQCH protein and GFP-IQCH( $\Delta$ IQ) and reacted in a dark box for 15 min at room temperature. The samples were added to monolith capillaries (NanoTemper, MO-L022) and subsequently subjected to MST analysis. The measurement protocol times were as follows: fluorescence before 5 sec, MST after 30 sec, fluorescence after 5 sec, and delay of 25 sec. The dissociation constant (K<sub>d</sub>) was determined using a single-site model to fit the curve.

## Statistical analysis

The data were compared for statistical significance using GraphPad Prism version 9.0.0 (GraphPad Software). The unpaired, two-tailed Student's *t* test was used for the statistical analyses. The data are presented as the mean  $\pm$  SEM, and statistically significant differences are represented as \**p* < 0.05.

## Acknowledgements

We thank the patient and the family members for their support during this research study.

## Competing interests

The authors declare that they have no competing interests.

## Author contributions

Y.S. designed and supervised the study experiments. Y.Y. collected the data and conducted the clinical evaluations. T.R., R.Z., and Y.S. performed the experiments and analyzed most of the data. S.C. generated the CRISPR mice. J.G., C.J., X.W., G.S. and S.D. performed the cell experiments. Y.S. wrote the manuscript with input from others. All authors revised and approved the article.

## Ethics Approval and Consent to Participate

For human participants, this study was performed in accordance with the principles of the Declaration of Helsinki. Approval was granted by the Ethics Committee of the Second West China Hospital of Sichuan University. Informed consent was obtained from all individual participants included in the study. The animal experiments were performed in accordance with the recommendations of the Guide for the Care and Use of Laboratory Animals of the National Institutes of Health, and the animal experiments were approved by the Experimental Animal Management and Ethics Committee of West China Second University Hospital (IACUC no. 2021(070)).

## Funding

This study was funded by the National Key Research and Development Project (2019YFA0802101)

## Data and materials availability

All data needed to evaluate the conclusions in the paper are present in the paper and/or the Supplementary Materials.

## Supplementary information

**Figure 2—figure supplement 1. TEM and immunofluorescence analysis of the abnormal phenotype of spermatozoa in the patient. (A)** TEM results showing the deranged or incomplete ‘9+2’ microtubule structure of the flagella. The percentage of abnormal ‘9+2’ microtubule structures in the control and proband (scale bars, 500 nm; Student’s t test; \* $p < 0.05$ ; error bars, s.e.m.). CP, central-pair microtubule; MTD, peripheral microtubule doublet; ODF, outer dense fiber; M, mitochondrion. **(B)** Immunofluorescence staining of SEPTIN4 showing no significant difference in the annulus between spermatozoa from the control and the proband (blue, DAPI; green,  $\alpha$ -Tubulin; red, SEPTIN4; scale bars, 5  $\mu$ m).

**Figure 3—figure supplement 1. The expression pattern of IQCH in testes.** (A) qPCR analysis showing that *Iqch* was predominantly expressed in the testes, and *Iqch* began to be significantly expressed on P21, reached its peak on P35, and then showed a stable expression pattern (Student's t test; \* $p < 0.05$ ; error bars, s.e.m.). P, postnatal day. (B) Immunofluorescence staining of IQCH in isolated human germ cells (blue, DAPI; red, IQCH; scale bars, 5  $\mu$ m). (C) Immunofluorescence staining of IQCH in isolated mouse germ cells (blue, DAPI; red, IQCH; scale bars, 5  $\mu$ m). Three independent experiments were performed.

**Figure 3—figure supplement 2. Generation of *Iqch* KO mice.** (A) A schematic illustration of the strategy used to generate the *Iqch* KO mice. Exons 2 through 3 of the *Iqch* gene were targeted by the CRISPR-Cas9 system. (B) PCR, RT-PCR, and western blotting were used to determine the genotype and KO efficiency ( $n = 3$  biologically independent WT mice and KO mice). (C) Female fertility was unaffected in the *Iqch* KO mice according to the mouse fertility test. *Iqch* KO female mice ( $n=9$ ) and WT female mice ( $n=15$ ) were mated with WT male mice for 6 months at a male/female ratio of 1:3 (Student's t test; ns, not significant; error bars, s.e.m.). (D) Representative images of H&E-stained WT and *Iqch* KO ovary tissue sections ( $n = 3$  biologically independent WT mice and KO mice; scale bars, 75  $\mu$ m). (E) The number of primordial follicles, primary follicles, secondary follicles, and antral follicles in the ovaries of the WT and *Iqch* KO mice ( $n = 3$  biologically independent WT mice and KO mice; Student's t test; ns, not significant; error bars, s.e.m.). (F) Fertility of the WT and *Iqch* KO males. KO male mice and littermate WT male mice were bred with WT female mice. The average pregnancy rates and litter sizes were measured ( $n = 6$  biologically independent WT mice and KO mice; Student's t test; \* $p < 0.05$ ; error bars, s.e.m.). preg, pregnancy. (G) The sizes of the epididymides and testes of the WT and *Iqch* KO mice showing no significantly different. The testis and epididymis/body weight ratio of the *Iqch* KO mice were not significantly different from those of the WT male mice ( $n = 3$  biologically independent WT mice and KO mice; Student's t test; ns, not significant; error bars, s.e.m.).

**Figure 3—figure supplement 3. No obvious abnormalities in the histology of the testes or epididymis were observed in the *Iqch* KO mice.** (A) H&E staining of testicular sections from adult *Iqch* KO mice show no obvious abnormalities at different stages of spermatogenesis compared to those from WT mice ( $n = 3$  biologically independent WT mice and KO mice; scale bars, 50  $\mu$ m). (B) H&E staining of epididymal sections from adult WT and *Iqch* KO mice reveal no significant difference in the lumens of the epididymides ( $n = 3$  biologically independent WT mice and KO mice; scale bars, 50  $\mu$ m).

**Figure 3—figure supplement 4. (A)** Papanicolaou staining of the isolated germ cells from the testes of the *Iqch* KO mice revealed cracking of the axoneme at steps 13-14 and 15-16 ( $n = 3$  biologically independent WT mice and KO mice; scale bars, 5  $\mu$ m). (B) The cracking of the axoneme became more severe in the isolated epididymal spermatozoa than in the testicular spermatozoa ( $n = 3$  biologically independent WT mice and KO mice; scale bars, 5  $\mu$ m). The dotted boxes and red arrowheads denote axoneme cracking and exposure.

**Figure 3—figure supplement 5. The spermatozoa from the *Iqch* KO mice exhibited defective mitochondria.** (A) Immunofluorescence staining of SEPTIN4 revealed no significant differences at the annulus between the spermatozoa from the WT mice and those from the *Iqch* KO mice ( $n = 3$  biologically independent WT mice and KO mice; scale bars, 5  $\mu$ m). (B) Immunofluorescence staining of TFAM revealed defects in the mitochondria of the spermatozoa from the *Iqch* KO mice ( $n = 3$  biologically independent WT mice and KO mice; scale bars, 5  $\mu$ m). TFAM, Transcription Factor A, Mitochondrial.

**Figure 4—figure supplement 1. The loss of function of IQCH resulted in deficiencies in oocyte activation and acrosomes.** (A) Representative images of the IVF treatments showing that the spermatozoa from the *Iqch* KO mice did not penetrate the zona pellucida ( $n = 3$  biologically independent WT mice and KO mice; scale bars, 50  $\mu$ m). The red arrowheads indicate the

spermatozoa penetrating the zona pellucida. **(B)** Immunofluorescence staining of the germ cells at different developmental stages revealed that the development of the PNA was impaired in *Iqch* KO mice ( $n = 3$  biologically independent WT mice and KO mice; blue, DAPI; purple, PNA; scale bars, 50  $\mu\text{m}$ ). **(C)** Immunofluorescence staining suggested that the loss of function of IQCH resulted in the abnormal location and expression of PLC $\zeta$  in the sperm of the proband (blue, DAPI; green,  $\alpha$ -Tubulin; red, PLC $\zeta$ ; scale bars, 50  $\mu\text{m}$ ). **(D)** Immunofluorescence staining of germ cells at different developmental stages from *Iqch* KO mice revealed the aberrant expression of PLC $\zeta$  compared to that in WT mice ( $n = 3$  biologically independent WT mice and KO mice; blue, DAPI; green,  $\alpha$ -Tubulin; red, PLC $\zeta$ ; scale bars, 50  $\mu\text{m}$ ). PNA, peanut agglutinin; PLC $\zeta$ , phospholipase C zeta 1.

**Figure 6—figure supplement 1. The reduced expression levels of the seven proteins most relevant to the phenotype of the spermatozoa of the *Iqch* KO mice.**

Immunofluorescence staining showing that the expression levels of the seven proteins most relevant to the phenotype of the *Iqch* KO mice, including HNRNPK, HNRPAB, EWSR1, SYNCRIP, FUS, and ANXA7, were reduced in the spermatozoa of the *Iqch* KO mice compared to those of the WT mice ( $n = 3$  biologically independent WT mice and KO mice; blue, DAPI; green,  $\alpha$ -Tubulin; red, HNRNPK, HNRPAB, EWSR1, SYNCRIP, FUS, or ANXA7; scale bars, 5  $\mu\text{m}$ ).

**Figure 6—figure supplement 2. (A)** Densitometry analysis performed on corresponding Western blotting to assess the expression levels of seven proteins most relevant to the *Iqch* KO mouse phenotype in WT and *Iqch* KO mice ( $n = 3$  biologically independent WT mice and KO mice; Student's t test;  $*p < 0.05$ ; error bars, s.e.m.). **(B and C)** Statistical analysis was performed on the protein expression levels of CaM, IQCH, and HNRPAB, as well as on the interaction between IQCH and CaM in K562 cells with IQCH (B) or CaM (C) knockdown (Student's t test;  $*p < 0.05$ ; error bars, s.e.m.). siRNA, small interfering RNA. **(D and E)** Quantitative analysis was conducted on the protein expression levels of CaM, IQCH, and HNRPAB, as well as on the interaction between IQCH and CaM in K562 cells overexpressing IQCH with simultaneous knockdown of CaM (D) or overexpressing CaM with simultaneous knockdown of IQCH (E) (Student's t test;  $*p < 0.05$ ; error bars, s.e.m.). siRNA, small interfering RNA. **(F)** Statistical analysis was conducted on the protein expression levels of CaM, IQCH, and HNRPAB, as well as on the interaction between IQCH and CaM in HEK293 cells cotransfected with the WT-IQCH and WT-CaM plasmids, cotransfected with the IQCH ( $\Delta$ IQ) and WT-CaM plasmids, or cotransfected with the control and WT-CaM plasmids (Student's t test;  $*p < 0.05$ ; error bars, s.e.m.). Three independent experiments were performed.

**Figure 6—figure supplement 3. GO analysis of the downregulated genes of the *Iqch* KO mice through RNA sequencing.** Bubble plots of the GO analysis revealed the effects of IQCH deficiency on male fertility in three categories: BP, biological process; CC, cellular component; and MF, molecular function.

**Figure 6—figure supplement 4. IQCH interacted with CaM to regulate spermatogenesis. (A)** A schematic representation of IQCH showing an IQ motif conserved between humans and mice. The domains were predicted via SMART (<http://smart.embl-heidelberg.de/>). **(B)** The protein-protein docking between IQCH and CaM was predicted by the AlphaFold Protein Structure Database (<https://AlphaFold.ebi.ac.uk/>) and LZerD website (<https://lzerd.kiharalab.org/>). **(C)** Immunofluorescence staining of germ cells at different developmental stages suggested the colocalization of CaM and IQCH in elongating spermatids in WT mice. As expected, IQCH was not detected in the testes of the *Iqch* KO mice, and only CaM was expressed in elongating spermatids in the *Iqch* KO mice ( $n = 3$  biologically independent WT mice and KO mice; scale bars, 50  $\mu\text{m}$ ). **(D)** qPCR analysis demonstrated reduced *IQCH* and *CaM* expression levels in K562 cells following transfection with *IQCH*-siRNA and *CaM*-siRNA, respectively, compared to those in K562 cells transfected with the negative control siRNA. The downregulation of *HNRPAB* resulted from decreased *IQCH* or *CaM* expression (Student's t test;  $*p < 0.05$ ; error bars, s.e.m.). **(E)** qPCR analysis of K562 cells overexpressing *IQCH* with simultaneous knockdown of *CaM* or overexpressing *CaM*

with simultaneous knockdown of *CaM* or overexpressing *CaM* with simultaneous knockdown of *IQCH* revealed significant downregulation of *HNRPAB* (Student's *t* test; \**p* < 0.05; error bars, s.e.m.). siRNA, small interfering RNA. Three independent experiments were performed.



## References

- Bravo-Sagua R., Parra V., López-Crisosto C., Díaz P., Quest A. F., Lavandero S. (2017) **Calcium Transport and Signaling in Mitochondria** *Compr Physiol* **7**:623–634
- Chapman K. M., Powell H. M., Chaudhary J., Shelton J. M., Richardson J. A., Richardson T. E., Hamra F. K. (2013) **Linking spermatid ribonucleic acid (RNA) binding protein and retrogene diversity to reproductive success** *Mol Cell Proteomics* **12**:3221–3236
- Chen L. T. *et al.* (2014) **Functional and molecular features of the calmodulin-interacting protein IQCG required for haematopoiesis in zebrafish** *Nat Commun* **5**
- Corley M., Burns M. C., Yeo G. W. (2020) **How RNA-Binding Proteins Interact with RNA: Molecules and Mechanisms** *Mol Cell* **78**:9–29
- Dai J. *et al.* (2022) **IQCN disruption causes fertilization failure and male infertility due to manchette assembly defect** *EMBO Mol Med* **14**
- Dolmetsch R. E., Pajvani U., Fife K., Spotts J. M., Greenberg M. E. (2001) **Signaling to the nucleus by an L-type calcium channel-calmodulin complex through the MAP kinase pathway** *Science* **294**:333–339
- Du Y., Huang Y., Gao Y., Song B., Mao J., Chen L., Bai L., Tang J. (2015) **Annexin A7 modulates BAG4 and BAG4-binding proteins in mitochondrial apoptosis** *Biomed Pharmacother* **74**:30–34
- Fang P. *et al.* (2015) **A novel acrosomal protein, IQCF1, involved in sperm capacitation and the acrosome reaction** *Andrology* **3**:332–344
- Fukuda N., Fukuda T., Sinnamon J., Hernandez-Hernandez A., Izadi M., Raju C. S., Czaplinski K., Percipalle P. (2013) **The transacting factor CBF-A/Hnrnpab binds to the A2RE/RTS element of protamine 2 mRNA and contributes to its translational regulation during mouse spermatogenesis** *PLoS Genet* **9**
- Graham B. H., Waymire K. G., Cottrell B., Trounce I. A., MacGregor G. R., Wallace D. C. (1997) **A mouse model for mitochondrial myopathy and cardiomyopathy resulting from a deficiency in the heart/muscle isoform of the adenine nucleotide translocator** *Nat Genet* **16**:226–234
- Harris T. P., Schimenti K. J., Munroe R. J., Schimenti J. C. (2014) **IQ motif-containing G (Iqcg) is required for mouse spermiogenesis** *G3 (Bethesda)* **4**:367–372
- Hess R. A., Renato de Franca L. (2008) **Spermatogenesis and cycle of the seminiferous epithelium** *Adv Exp Med Biol* **636**:1–15
- Jensen H. H., Brohus M., Nyegaard M., Overgaard M. T. (2018) **Human Calmodulin Mutations** *Front Mol Neurosci* **11**
- Kägi U., Chafouleas J. G., Norman A. W., Heizmann C. W. (1988) **Developmental appearance of the Ca<sup>2+</sup>-binding proteins parvalbumin, calbindin D-28K, S-100 proteins and calmodulin during testicular development in the rat** *Cell Tissue Res* **252**:359–365

- Kakiuchi S., Yasuda S., Yamazaki R., Teshima Y., Kanda K., Kakiuchi R., Sobue K. (1982) **Quantitative determinations of calmodulin in the supernatant and particulate fractions of mammalian tissues** *J Biochem* **92**:1041–1048
- Klee C. B., Crouch T. H., Richman P. G. (1980) **Calmodulin** *Annu Rev Biochem* **49**:489–515
- Krausz C., Cioppi F., Riera-Escamilla A. (2018) **Testing for genetic contributions to infertility: potential clinical impact** *Expert Rev Mol Diagn* **18**:331–346
- Krausz C., Riera-Escamilla A. (2018) **Genetics of male infertility** *Nat Rev Urol* **15**:369–384
- Kuroda M. *et al.* (2000) **Male sterility and enhanced radiation sensitivity in TLS(-/-) mice** *Embo j* **19**:453–462
- Legrand J. M. D., Chan A. L., La H. M., Rossello F. J., Änkö M. L., Fuller-Pace F. V., Hobbs R. M. (2019) **DDX5 plays essential transcriptional and post-transcriptional roles in the maintenance and function of spermatogonia** *Nat Commun* **10**
- Liang J., Zheng Y., Zeng W., Chen L., Yang S., Du P., Wang Y., Yu X., Zhang X. (2021) **Comparison of proteomic profiles from the testicular tissue of males with impaired and normal spermatogenesis** *Syst Biol Reprod Med* **67**:127–136
- Means A. R., Tash J. S., Chafouleas J. G. (1982) **Physiological implications of the presence, distribution, and regulation of calmodulin in eukaryotic cells** *Physiol Rev* **62**:1–39
- Meschede D., Horst J. (1997) **The molecular genetics of male infertility** *Mol Hum Reprod* **3**:419–430
- Morgan M., Kumar L., Li Y., Baptissart M. (2021) **Post-transcriptional regulation in spermatogenesis: all RNA pathways lead to healthy sperm** *Cell Mol Life Sci* **78**:8049–8071
- Moriya M., Fujinaga K., Yazawa M., Katagiri C. (1995) **Immunohistochemical localization of the calcium/calmodulin-dependent protein phosphatase, calcineurin, in the mouse testis: its unique accumulation in spermatid nuclei** *Cell Tissue Res* **281**:273–281
- Nie D., Yang X., Yankai Z. (2009) **Molecular cloning and expression profile analysis of a novel mouse testis-specific expression gene mtIQ1** *Mol Biol Rep* **36**:1203–1209
- Sano M., Ohshima A. S., Kawamura N., Kitajima S., Mizutani A. (1987) **Immunohistochemical study of calmodulin in developing mouse testis** *J Exp Zool* **241**:51–59
- Sechi S. *et al.* (2019) **Drosophila Doublefault protein coordinates multiple events during male meiosis by controlling mRNA translation** *Development* **146**
- Smoake J. A., Song S. Y., Cheung W. Y. (1974) **Cyclic 3',5'-nucleotide phosphodiesterase. Distribution and developmental changes of the enzyme and its protein activator in mammalian tissues and cells** *Biochim Biophys Acta* **341**:402–411
- Tian H., Petkov P. M. (2021) **Mouse EWSR1 is crucial for spermatid post-meiotic transcription and spermiogenesis** *Development* **148**
- Traven E., Ogrinc A., Kunej T. (2017) **Initiative for standardization of reporting genetics of male infertility** *Syst Biol Reprod Med* **63**:58–66

- Wang X. L., Li J. M., Yuan S. Q. (2022) **Characterization of the protein expression and localization of hnRNP family members during murine spermatogenesis** *Asian J Androl*
- Wen Y., Richardson R. T., O'Rand M G. (1999) **Processing of the sperm protein Sp17 during the acrosome reaction and characterization as a calmodulin binding protein** *Dev Biol* **206**:113–122
- Xu H., Guo J., Wu W., Han Q., Huang Y., Wang Y., Li C., Cheng X., Zhang P., Xu Y. (2022) **Deletion of Hnrnpk Gene Causes Infertility in Male Mice by Disrupting Spermatogenesis** *Cells* **11**
- Yamamoto N. J. A. h. e. c. (1985) **"Immunoelectron microscopic localization of calmodulin in guinea pig testis and spermatozoa."** :199–211
- Yang F., Wei Q., Adelstein R. S., Wang P. J. (2012) **Non-muscle myosin IIB is essential for cytokinesis during male meiotic cell divisions** *Dev Biol* **369**:356–361
- Yin L. L., Li J. M., Zhou Z. M., Sha J. H. (2005) **Identification of a novel testis-specific gene and its potential roles in testis development/spermatogenesis** *Asian J Androl* **7**:127–137
- Zhang P., Jiang W., Luo N., Zhu W., Fan L. (2019) **IQ motif containing D (IQCD), a new acrosomal protein involved in the acrosome reaction and fertilisation** *Reprod Fertil Dev* **31**:898–914

## Article and author information

### Tiechao Ruan

Key Laboratory of Obstetrics, Gynecologic and Pediatric Diseases and Birth Defects of the Ministry of Education, Sichuan University, Chengdu, 610041, China;; Department of Pediatrics, West China Second University Hospital, Sichuan University, Chengdu 610041 China;

### Ruixi Zhou

Key Laboratory of Obstetrics, Gynecologic and Pediatric Diseases and Birth Defects of the Ministry of Education, Sichuan University, Chengdu, 610041, China;; Department of Pediatrics, West China Second University Hospital, Sichuan University, Chengdu 610041 China;

### Yihong Yang

Reproduction Medical Center of West China Second University Hospital, Key Laboratory of Obstetric, Gynecologic and Pediatric Diseases and Birth Defects of Ministry of Education, Sichuan University, Chengdu 610041, China;

### Junchen Guo

Sichuan University-The Chinese University of Hong Kong (SCU-CUHK) Joint Laboratory for Reproductive Medicine, Key Laboratory of Obstetric, Gynaecologic and Paediatric Diseases and Birth Defects of Ministry of Education, West China Second University Hospital, Sichuan University, Chengdu 610041, China, Reproductive Endocrinology and Regulation Laboratory, Department of Obstetric and Gynaecologic, West China Second University Hospital, Sichuan University, Chengdu 610041, China

### Chuan Jiang

Key Laboratory of Obstetrics, Gynecologic and Pediatric Diseases and Birth Defects of the Ministry of Education, Sichuan University, Chengdu, 610041, China;

**Xiang Wang**

Key Laboratory of Obstetrics, Gynecologic and Pediatric Diseases and Birth Defects of the Ministry of Education, Sichuan University, Chengdu, 610041, China;

**Gan Shen**

Key Laboratory of Obstetrics, Gynecologic and Pediatric Diseases and Birth Defects of the Ministry of Education, Sichuan University, Chengdu, 610041, China;

**Siyu Dai**

Key Laboratory of Obstetrics, Gynecologic and Pediatric Diseases and Birth Defects of the Ministry of Education, Sichuan University, Chengdu, 610041, China;

**Suren Chen**

Education Key Laboratory of Cell Proliferation & Regulation Biology, College of Life Sciences, Beijing Normal University, Beijing 100875, China

**For correspondence:** [chensr@bnu.edu.cn](mailto:chensr@bnu.edu.cn)

ORCID iD: [0000-0002-9337-5412](https://orcid.org/0000-0002-9337-5412)

**Ying Shen**

Key Laboratory of Obstetrics, Gynecologic and Pediatric Diseases and Birth Defects of the Ministry of Education, Sichuan University, Chengdu, 610041, China; NHC Key Laboratory of Chronobiology, Sichuan University, Chengdu 610041, China;

**For correspondence:** [yingcaishen01@163.com](mailto:yingcaishen01@163.com)

**Copyright**

© 2023, Ruan et al.

This article is distributed under the terms of the [Creative Commons Attribution License](https://creativecommons.org/licenses/by/4.0/), which permits unrestricted use and redistribution provided that the original author and source are credited.

**Editors**

Reviewing Editor

**Detlef Weigel**

Max Planck Institute for Biology Tübingen, Tübingen, Germany

Senior Editor

**Detlef Weigel**

Max Planck Institute for Biology Tübingen, Tübingen, Germany

**Reviewer #1 (Public Review):**

By identifying a loss of function mutant of IQCH in infertile patient, Ruan et al. shows that IQCH is essential for spermiogenesis by generating a knockout mouse model of IQCH. Similar to infertile patient with mutant of IQCH, *Iqch* knockout mice are characterized by a cracked flagellar axoneme and abnormal mitochondrial structure. Mechanistically, IQCH regulates the expression of RNA-binding proteins (especially HNRPAB), which are indispensable for spermatogenesis.

Although this manuscript contains a potentially interesting piece of work that delineates a mechanism of IQCH that associates with spermatogenesis, this reviewer feels that a number of issues require clarification and re-evaluation for a better understanding of the role of IQCH in spermatogenesis.

Line 251 - 253, "To elucidate the molecular mechanism by which IQCH regulates male fertility, we performed liquid chromatography tandem mass spectrometry (LC-MS/MS) analysis using mouse sperm lysates and detected 288 interactors of IQCH (Figure 5-source data 1)."

The reviewer had already raised significant concerns regarding the text above, noting that "LC-MS/MS analysis using mouse sperm lysates" would not identify interactors of IQCH. However, this issue was not addressed in the revised manuscript. In the Methods section detailing LC-MS/MS, the authors stated that it was conducted on "eluates obtained from IP". However, there was no explanation provided on how IP for LC-MS/MS was performed. Additionally, it was unclear whether LC-MS or LC-MS/MS was utilized. The primary concern is that if LC-MS/MS was conducted for the IP of IQCH, IQCH itself should have been detected in the results; however, as indicated by Figure 5-source data 1, IQCH was not listed.

<https://doi.org/10.7554/eLife.88905.3.sa1>

#### **Reviewer #3 (Public Review):**

In this study, Ruan et al. investigate the role of the IQCH gene in spermatogenesis, focusing on its interaction with calmodulin and its regulation of RNA-binding proteins. The authors examined sperm from a male infertility patient with an inherited IQCH mutation as well as *Iqch* CRISPR knockout mice. The authors found that both human and mouse sperm exhibited structural and morphogenetic defects in multiple structures, leading to reduced fertility in *Ichq*-knockout male mice. Molecular analyses such as mass spectrometry and immunoprecipitation indicated that RNA-binding proteins are likely targets of IQCH, with the authors focusing on the RNA-binding protein HNRPAB as a critical regulator of testicular mRNAs. The authors used in vitro cell culture models to demonstrate an interaction between IQCH and calmodulin, in addition to showing that this interaction via the IQ motif of IQCH is required for IQCH's function in promoting HNRPAB expression. In sum, the authors concluded that IQCH promotes male fertility by binding to calmodulin and controlling HNRPAB expression to regulate the expression of essential mRNAs for spermatogenesis. These findings provide new insight into molecular mechanisms underlying spermatogenesis and how important factors for sperm morphogenesis and function are regulated.

The strengths of the study include the use of mouse and human samples, which demonstrate a likely relevance of the mouse model to humans; the use of multiple biochemical techniques to address the molecular mechanisms involved; the development of a new CRISPR mouse model; ample controls; and clearly displayed results. Assays are done rigorously and in a quantitative manner. Overall, the claims made by the authors in this manuscript are well-supported by the data provided.

<https://doi.org/10.7554/eLife.88905.3.sa0>

#### **Author response:**

The following is the authors' response to the previous reviews.



## Public Reviews:

### Reviewer #1 (Public Review):

*Although this manuscript contains a potentially interesting piece of work that delineates a mechanism of IQCH that associates with spermatogenesis, this reviewer feels that a number of issues require clarification and re-evaluation for a better understanding of the role of IQCH in spermatogenesis. With the shortage of logics and supporting data, causal relationships are still not clear among IQCH, CaM, and HNRPAB. The most serious point in this manuscript could be that the authors try to generalize their interpretations with too simplified model from limited pieces of their data. The way the data and the logic are presented needs to be largely revised, and several interpretations should be supported by direct evidence.*

Response: Thank you for the reviewer's comment. IQCH is a calmodulin-binding protein, and the binding of IQCH and CaM was confirmed by LC-MS/MS analysis and co-IP assay using sperm lysate. We thus speculated that if the interaction of IQCH and CaM might be a prerequisite for IQCH function. To prove that speculation, we took HNRPAB as an example. We knocked down IQCH in cultured cells, and a decrease in the expression of HNRPAB was observed. Similarly, when we knocked down CaM in cultured cells, and a decrease in the expression of HNRPAB was also detected. However, these results cannot exclude that IQCH or CaM could regulate HNRPAB expression alone. To investigate that if IQCH or CaM could regulate HNRPAB expression alone, we overexpressed IQCH in cells that knocked down CaM, while the expression of HNRPAB cannot be rescued, suggesting that IQCH cannot regulate HNRPAB expression when CaM is reduced. In consistent, we overexpressed CaM in cells that knocked down IQCH, while the expression of HNRPAB cannot be rescued, suggesting that CaM cannot regulate HNRPAB expression when IQCH is reduced. Thus, IQCH or CaM cannot regulate HNRPAB expression alone. Moreover, we deleted the IQ motif of IQCH, which is required for binding to CaM. The co-IP results showed that the interaction of IQCH and CaM was disrupted when deleting the IQ motif of IQCH, and the expression of HNRPAB was decreased. Therefore, we suggested that the interaction of IQCH and CaM might be required for IQCH regulating HNRPAB. In future studies, we will further investigate the relationships among IQCH, CaM, and HNRPAB.

### Reviewer #3 (Public Review):

*(1) More background details are needed regarding the proteins involved, in particular IQ proteins and calmodulin. The authors state that IQ proteins are not well-represented in the literature, but do not state how many IQ proteins are encoded in the genome. They also do not provide specifics regarding which calmodulins are involved, since there are at least 5 family members in mice and humans. This information could help provide more granular details about the mechanism to the reader and help place the findings in context.*

Response: Thanks to reviewer's suggestion. We have provided additional background information regarding IQ-containing protein family members in humans and mice, as well as other IQ-containing proteins implicated in male fertility, in the Introduction section. Furthermore, we have supplemented the Introduction with background information concerning the association between CaM and male infertility.

*(2) The mouse fertility tests could be improved with more depth and rigor. There was no data regarding copulatory plug rate; data was unclear regarding how many WT females were used for the male breeding tests and how many litters were generated; the general methodology used for the breeding tests in the Methods section was not very explicitly or*

*clearly described; the sample size of  $n=3$  for the male breeding tests is rather small for that type of assay; and, given that ICHQ appears to be expressed in testicular interstitial cells (Fig. S10) and somewhat in other organs (Fig. S2), another important parameter of male fertility that should be addressed is reproductive hormone levels (e.g., LH, FSH, and testosterone). While normal epididymal size in Fig. S3 suggests that hormone (testosterone) levels are normal, epididymal size and/or weight were not rigorously quantified.*

Response: Thanks to reviewer's comment. We have provided the data regarding copulatory plug rate and the average number of litters for breeding tests in revised Figure 3—figure supplement 2. The methodology used for the breeding tests has been revised to be more detailed and explicit in the revised Method section. Moreover, we have increased the sample size for male breeding tests to  $n=6$ . We measured the serum levels of FSH, LH, and Testosterone in the WT ( $9.3 \pm 1.9$  ng/ml,  $0.93 \pm 0.15$  ng/ml, and  $0.2 \pm 0.03$  ng/ml) and Iqch KO mice ( $12 \pm 2$  ng/ml,  $1.17 \pm 0.2$  ng/ml, and  $0.2 \pm 0.04$  ng/ml). There was no significant difference observed in the serum levels of reproductive hormones between WT and Iqch KO mice; therefore, we did not include the data in the study. Furthermore, we have added quantitative data on epididymal size in the revised Figure 3—figure supplement 2.

*(3) The Western blots in Figure 6 should be rigorously quantified from multiple independent experiments so that there is stronger evidence supporting claims based on those assays.*

Response: We appreciate the reviewer's comment. As suggested, we have added quantified data in Figure 6—figure supplement 2 from the results of Western blotting in Figure 6.

*(4) Some of the mouse testis images could be improved. For example, the PNA and PLCz images in Figure S7 are difficult to interpret in that the tubules do not appear to be stage-matched, and since the authors claimed that testicular histology is unaffected in knockout testes, it should be feasible to stage-match control and knockout samples. Also, the anti-ICHQ and CaM immunofluorescence in Figure S10 would benefit from some cell-type-specific co-stains to more rigorously define their expression patterns, and they should also be stage-matched.*

Response: Thanks to reviewer's suggestions. We have included immunofluorescence images of anti-PLCz, anti-PNA and anti-IQCH and CaM during spermatogenesis development.

#### **Recommendations for the authors:**

##### **Reviewer #1 (Recommendations For The Authors):**

*(1) There are multiple grammatical errors and statements drawn beyond the results. The entire manuscript would benefit from professional editing.*

Response: We are sorry for the grammatical errors. We have enlisted professional editing services to refine our manuscript.

*(2) Line 40, "Firstly" is not appropriate here.*

Response: Thanks to reviewer's comment. The word "Firstly" has been removed from the revised manuscript.

*(3) Line 44, "processes".*

Response: Thanks to reviewer's suggestion. We have changed "process" in to "processes" on line 45.

| (4) *"spermatocytogenesis (mitosis)" is incorrect.*

Response: Thanks to reviewer's comment. We have changed "spermatocytogenesis (mitosis)" in to "mitosis" on line 47.

| (5) *Ca and Ca<sup>2+</sup> are both used in line 67 - 77. Be consistent.*

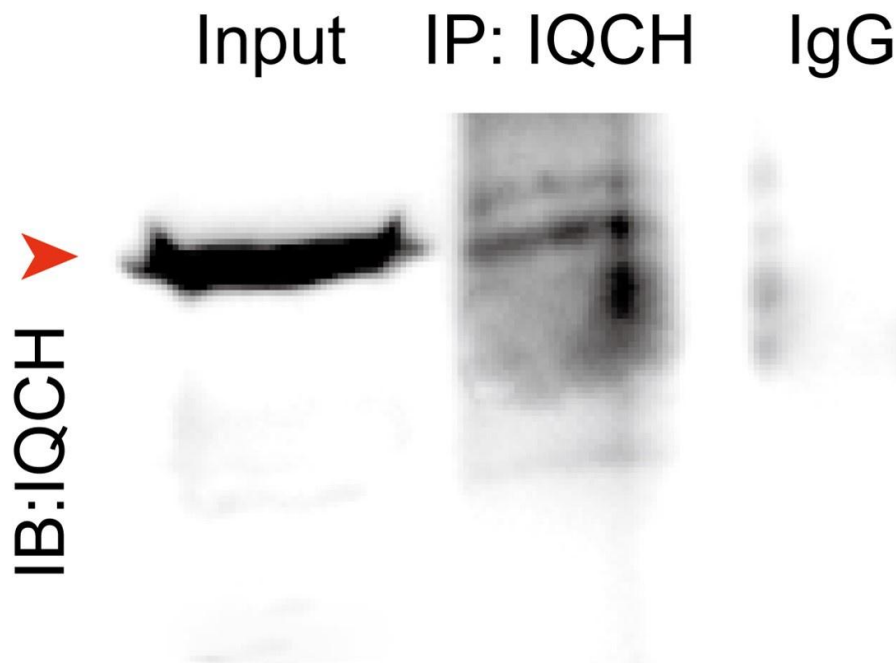
Response: We appreciate the reviewer's detailed checks. We have maintained consistency by revising instances of "Ca" to "Ca<sup>2+</sup>" in revised manuscript.

| (6) *Line 238 to 240, "To elucidate the molecular mechanism by which IQCH regulates male fertility, we performed liquid chromatography tandem mass spectrometry (LC-MS/MS) analysis using mouse sperm lysates and detected 288 interactors of IQCH (Data S1). "It is not clear how LC-MS/MS using mouse sperm lysates could detect "288 interactors of IQCH"? A co-IP experiment for IQCH using sperm lysates prior to LC-MS/MS is needed to detect "interactors of IQCH". However, in the Methods section, consistent with the main text, proteomic quantification was conducted for protein extract from sperm. Figure legend for Fig. 5 did not explain this, either. Thus, it is unable to evaluate Figure 5.*

Response: We sincerely apologize for the oversight. Following reviewer's suggestions, we have supplemented the method details of LC-MS/MS experiment in the Methods section of revised manuscript. Additionally, we conducted a co-IP experiment for IQCH using sperm lysates prior to LC-MS/MS and we did not include the corresponding figure in the manuscript. The results are as follows:

#### **Author response image 1.**

The results of a co-IP experiment for IQCH using sperm lysates from WT mice.



(7) Line 246, "... key proteins that might be activated by IQCH". What does "activated" here refer to? Should it be "upregulated"?

Response: We are sorry to our inexact statement. Instead, "upregulated" would better convey the intended meaning. According to reviewer's suggestions, we have modified "activated" into "upregulated".

(8) Line 252 to 254, "the cross-analysis revealed that 76 proteins were shared between the IQCH-bound proteins and the IQCH-activated proteins (Fig. 5E), implicating this subset of genes as direct targets." This is a confusing statement. Is the author trying to say, IQCH-bound proteins have upregulated expression, suggesting that IQCH enhances their expression?

Response: We appreciate the reviewer's comment regarding the clarity of the statement in Line 252 to 254 of the manuscript. We have modified this sentence into "Importantly, cross-analysis revealed that 76 proteins were shared between the IQCH-bound proteins and the downregulated proteins in *Iqch* KO mice (Figure 5E), suggesting that IQCH might regulate their expression by the interaction."

(9) Line 260 to 261, "SYNCRIP, HNRNPK, FUS, EWSR1, ANXA7, SLC25A4, and HNRPAB ... the loss of which showed the greatest influence on the phenotype of the *Iqch* KO mice." There is no evidence suggesting that the loss of SYNCRIP, HNRNPK, FUS, EWSR1, ANXA7, SLC25A4, and HNRPAB leads to *Iqch* KO phenotype.

Response: We apologize for our inaccurate statement. According to the literature, *Fus* KO, *Ewsr1* KO, and *Hnrnpk* KO male mice were infertile, showing the spermatogenic arrest with absence of spermatozoa (Kuroda et al. 2000; Tian et al. 2021; Xu et al. 2022). *Syncrip* is involved meiotic process in *Drosophila* by interacting with Doublefault (Sechi et al. 2019). *HNRPAB* might be associated with mouse spermatogenesis by binding to Protamine 2 and

contributing its translational regulation. Specifically, ANXA7 is a calcium-dependent phospholipid-binding protein that is a negative regulator of mitochondrial apoptosis (Du et al. 2015). Loss of SLC25A4 results in mitochondrial energy metabolism defects in mice (Graham et al. 1997). Moreover, RNA immunoprecipitation on formaldehyde cross-linked sperm followed by qPCR detected the interactions between HNRPAB and Catsper1, Catsper2, Catsper3, Ccdc40, Ccdc39, Ccdc65, Dnah8, Irrc6, and Dnhd1, which are essential for sperm development (Fukuda et al. 2013). Our Iqch KO mice showed abnormal sperm count, motility, morphology, and mitochondria, so we inferred that IQCH might play a role in spermatogenesis by regulating the expression of SYNCRIP, HNRNPK, FUS, EWSR1, ANXA7, SLC25A4, and HNRPAB to some extent. We have changed an appropriate stamen that “We focused on SYNCRIP, HNRNPK, FUS, EWSR1, ANXA7, SLC25A4, and HNRPAB, which play important roles in spermatogenesis.”

(10) *Fig. 6C and 6D use different styles of error bars.*

Response: We are sorry for our oversight. In accordance with the reviewer's recommendations, we have modified the representation of error bars in the revised Fig. 6C.

(11) *Line 296 to 297, "As expected, CaM interacted with IQCH, as indicated by LC-MS/MS analysis". It is not clear how LC-MS/MS detects protein interaction.*

Response: As reviewer's suggestions, we have supplemented the method details of LC-MS/MS experiment in the Methods section of revised manuscript. The results of proteins interacting with IQCH in sperm lysates from the LC-MS/MS experiment analysis were submitted as Figure 5—source data 1.

(12) *It is still not clear how the interaction between IQCH, CaM, and HNRPAB is required for the expression of each other.*

Response: Thank you for the reviewer's comment. IQCH is a calmodulin-binding protein, and the binding of IQCH and CaM was confirmed by LC-MS/MS analysis and co-IP assay using sperm lysate. We thus speculated that if the interaction of IQCH and CaM might be a prerequisite for IQCH function. To prove that speculation, we took HNRPAB as an example. We knocked down IQCH in cultured cells, and a decrease in the expression of HNRPAB was observed. Similarly, when we knocked down CaM in cultured cells, and a decrease in the expression of HNRPAB was also detected. However, these results cannot exclude that IQCH or CaM could regulate HNRPAB expression alone. To investigate that if IQCH or CaM could regulate HNRPAB expression alone, we overexpressed IQCH in cells that knocked down CaM, while the expression of HNRPAB cannot be rescued, suggesting that IQCH cannot regulate HNRPAB expression when CaM is reduced. In consistent, we overexpressed CaM in cells that knocked down IQCH, while the expression of HNRPAB cannot be rescued, suggesting that CaM cannot regulate HNRPAB expression when IQCH is reduced. Thus, IQCH or CaM cannot regulate HNRPAB expression alone. Moreover, we deleted the IQ motif of IQCH, which is required for binding to CaM. The co-IP results showed that the interaction of IQCH and CaM was disrupted when deleting the IQ motif of IQCH, and the expression of HNRPAB was decreased. Therefore, we suggested that the interaction of IQCH and CaM might be required for IQCH regulating HNRPAB. In future studies, we will further investigate the relationships among IQCH, CaM, and HNRPAB.

### **Reviewer #3 (Recommendations For The Authors):**

*The authors have addressed my minor concerns. However, they neglected to address any of my more significant concerns in the public review. I assume that they simply overlooked these critiques, despite the fact that eLife explicitly states that "...as a general*



*rule, concerns about a claim not being justified by the data should be explained in the public review." Therefore, the authors should have looked more carefully at the public reviews. As a result, my major concerns about the manuscript remain.*

Response: We apologize for overlooking the public review process. We have improved our study based on the feedback received during the public review.

<https://doi.org/10.7554/eLife.88905.3.sa3>