

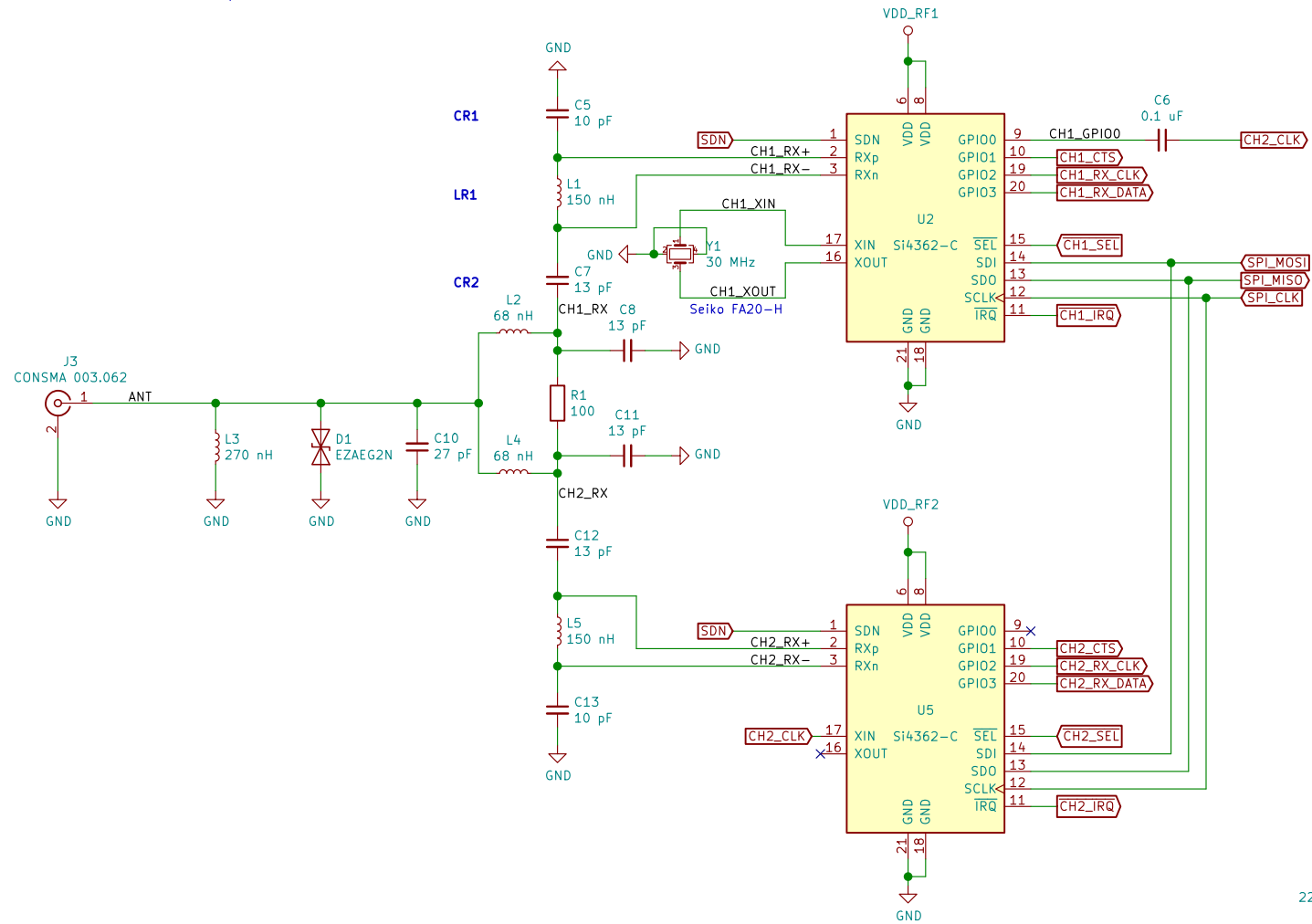
Receiver range: 142–1050 MHz

Channel A 161.975 MHz (87B)
Channel B 162.025 MHz (88B)
Fc = 162 MHz

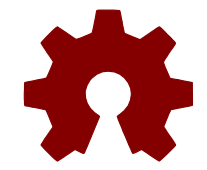
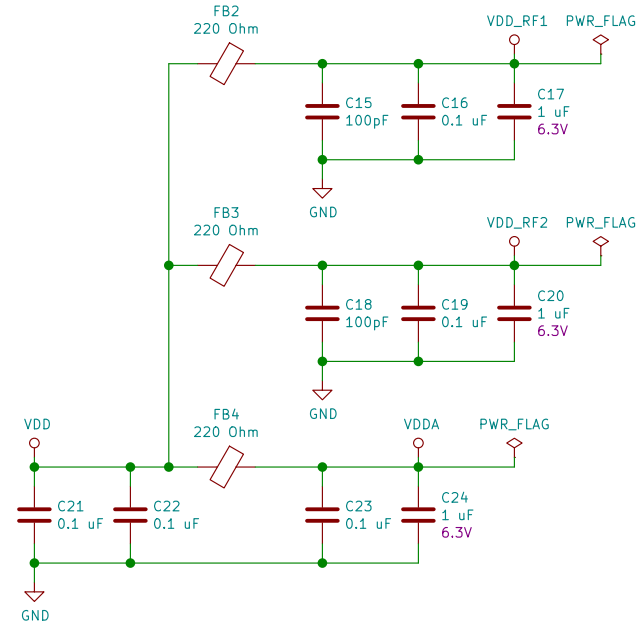
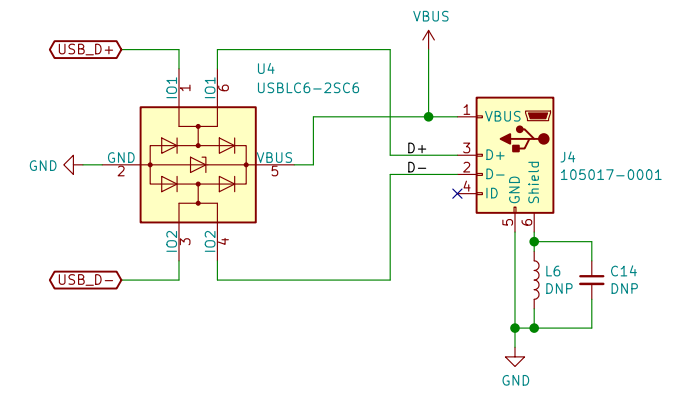
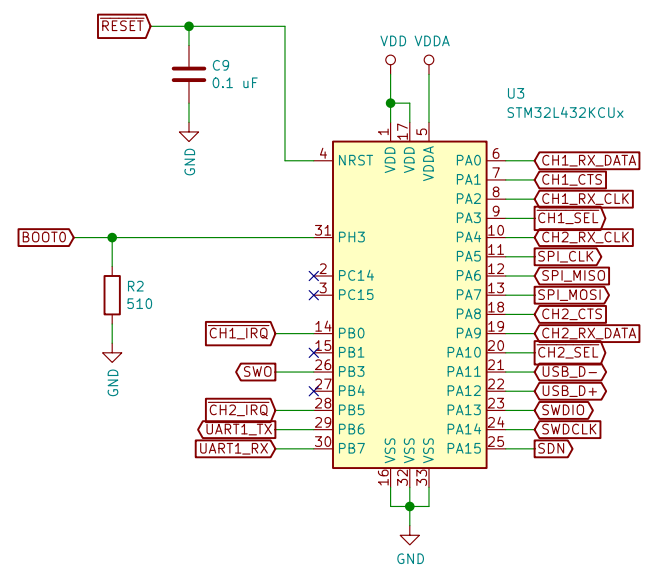
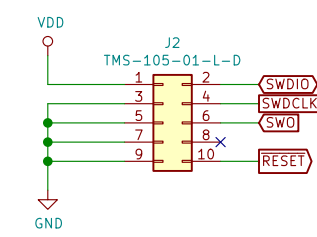
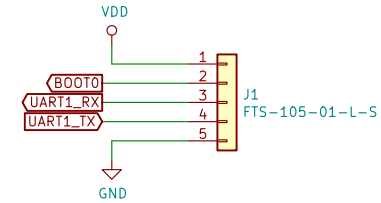
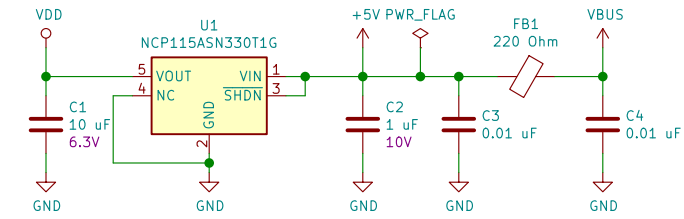
TX Rate: 9600 bps

Calculated values for Wilkinson splitter:
L = 69.47 nH
C = 13.89 pF (2C = 27.78 pF)
R = 100

3-element matching network at 169 MHz:
CR1 = 10 pF
LR1 = 150 nH
CR2 = 13 pF



Check the package footprint



| | | |
|---|------------------|---------|
| Sheet: / | | |
| File: ais-recv.sch | | |
| Title: Dual Channel AIS Receiver | | |
| Size: A3 | Date: 2020-06-30 | Rev: |
| KiCad E.D.A. kicad (5.1.4-0-10.14) | | Id: 1/1 |