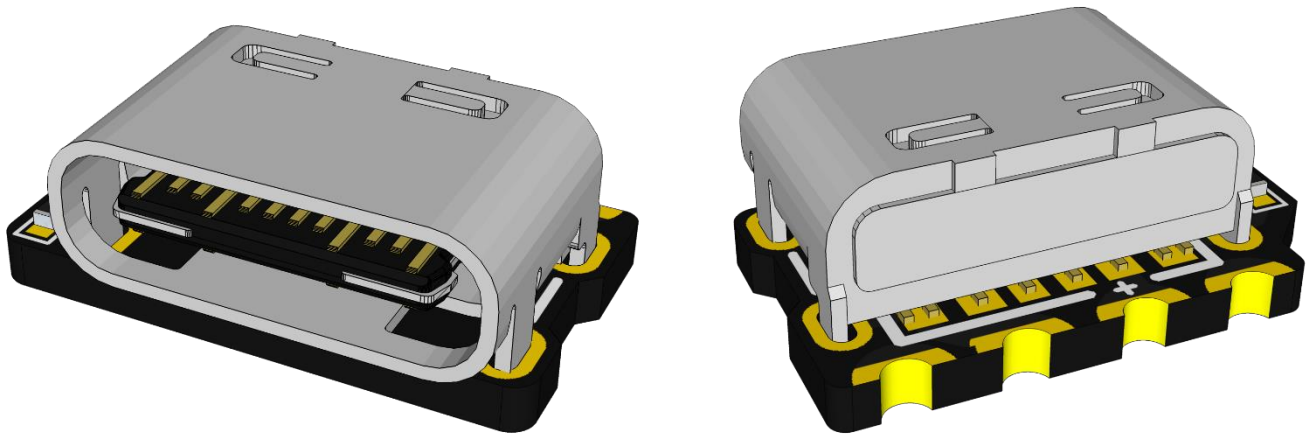


USB-C KIT FOR NINTENDO DSI NINTENDO DSI XL



NINTENDO DSI USB-C KIT

[HTTPS://SHOP.GILTESA.COM/PRODUCT/NINTENDO-DSI-USB-C-KIT](https://shop.giltesa.com/product/nintendo-dsi-usb-c-kit)

**PLEASE READ THROUGH THESE INSTRUCTIONS
ENTIRELY BEFORE ATTEMPTING TO INSTALL**

**WARNING: IF YOU ARE NOT COMFORTABLE WITH
SOLDERING, OR PERFORMING ANY STEP IN THIS
GUIDE, DO NOT PERFORM THE INSTALL YOURSELF.
FIND SOMEONE WHO IS COMFORTABLE TO DO IT FOR
YOU.**

INDEX

DESCRIPTION	4
FEATURES	4
INCLUDED	4
RECOMMENDED / REQUIRED [NOT INCLUDED]	5
BOARD DETAILS.....	6
INSTALLATION STEPS	7
PRE INSTALLATION STEPS.....	7
1. DISASSEMBLY THE NINTENDO DSI.....	7
INSTALLATION STEPS.....	12
1. PROTECT THE NEAREST COMPONENTS.....	12
2. REMOVE UNNECESSARY COMPONENTS	12
3. CLEAN THE BOARD	12
4. INSTALLATION OF THE USB-C BOARD.....	13
5. CUTTING THE PLASTIC SHELL	17
6. FINISHING THE INSTALLATION.....	18
FREQUENTLY ASKED QUESTIONS - FAQ.....	19

DESCRIPTION

The **Nintendo DSi: USB-C Kit** is a board that allows to replace the original charging connector for a modern and standard **USB-C**.

If your original connector is too old or damaged and you need a new one, or if you would like to charge your Nintendo DSi with a standard **USB-C charger**, like the charger of your **Nintendo Switch**, phone, laptop, you can with this kit.

This board is compatible with these two models:

- Nintendo DSi
- Nintendo DSi XL

FEATURES

- Charging your Nintendo with:
 - USB power banks
 - USB-A chargers
 - USB-C chargers
 - USB-C PD chargers (normal speed, not fast)
 - USB-A to USB-C cables
 - USB-C to USB-C cables

INCLUDED

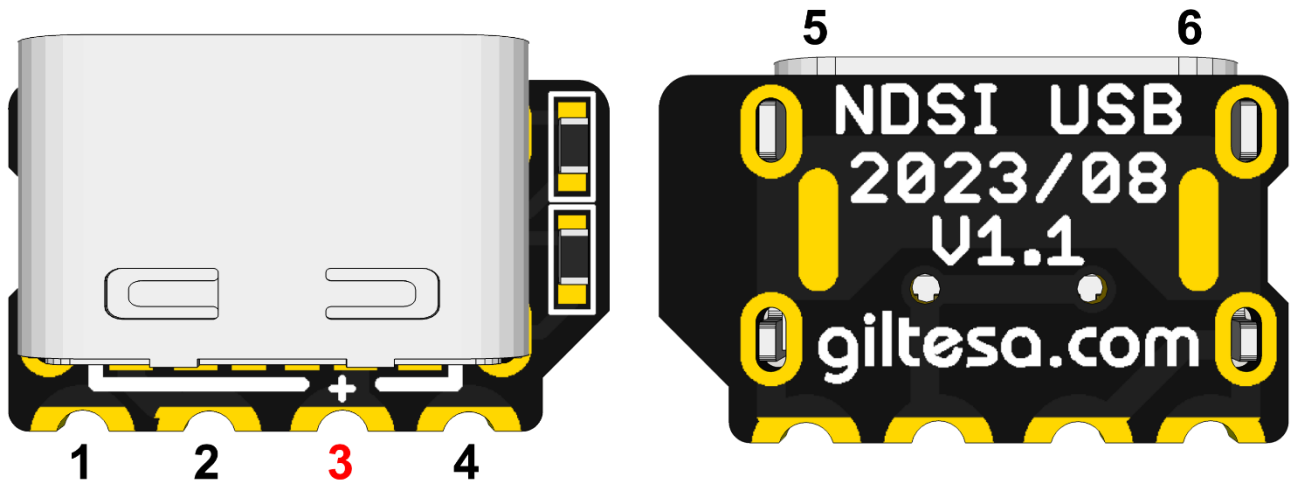
- 1 board.

RECOMMENDED / REQUIRED [NOT INCLUDED]

- Phillips screwdriver
- Kapton tape
- Soldering iron
- Tin
- Flux
- Desoldering pump
- Desoldering mesh
- Isopropyl alcohol

BOARD DETAILS

This tiny board has 6 pads in about 1cm² surface, which means it requires high soldering skills. The following explains what each pad is for.



Starting from the left to the right:

- | | |
|----------------|-----------------------------|
| 1. GND: | The ground pad. |
| 2. GND: | The ground pad. |
| 3. VCC: | The 5V line from the USB-C. |
| 4. GND: | The ground pad. |
| 5. GND: | The ground pad. |
| 6. GND: | The ground pad. |

INSTALLATION STEPS

Please, carefully read the following steps for a successful installation.

PRE INSTALLATION STEPS

Before the installation, your Nintendo DSi may need some extra steps to have it ready for the kit.

1. DISASSEMBLY THE NINTENDO DSi

Nintendo DSi use the **phillips screws** to close the shell. First remove the two screws which hold the DSi plastic battery cover.



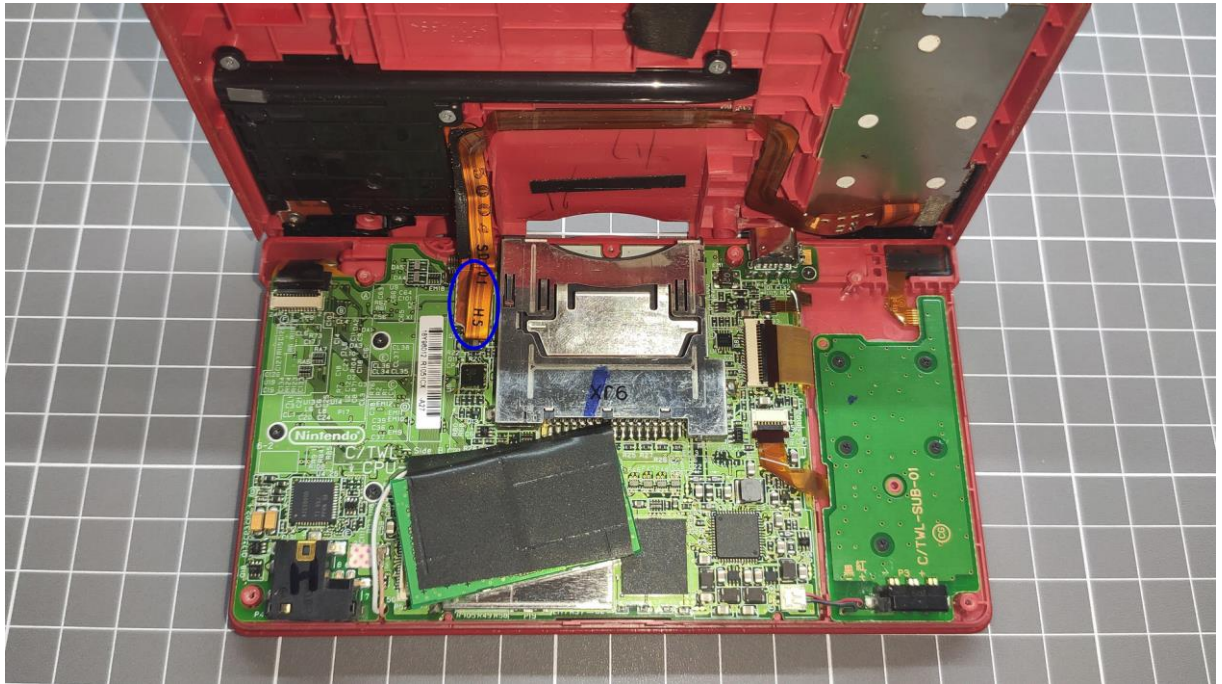
Remove all the accessories such as the battery, stylus, SD card and game card.



Then the 7 screws which hold the back shell.



Open the back shell carefully because it is connected to the mainboard with one flex cable. To disconnect the flex cable, pull it upwards.



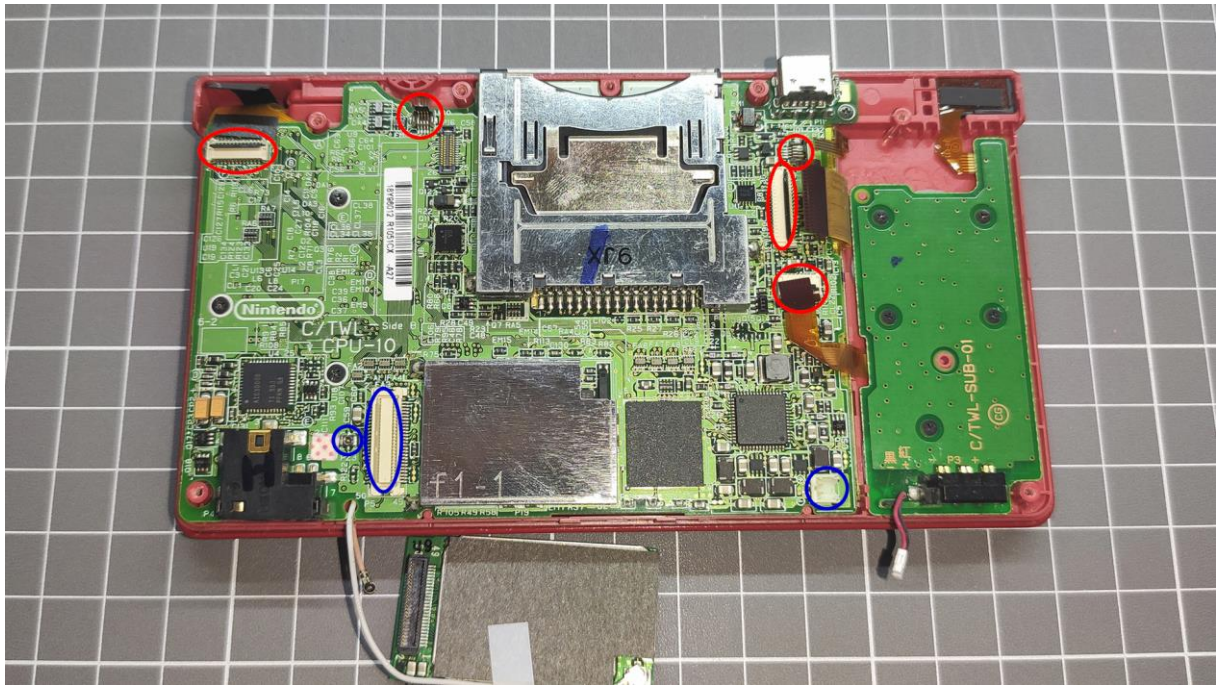
As you can see in the images, **my Nintendo DSi already had the kit installed**. I lost the photos when I was removing the original connector, but that's not a problem since it's removed in the same way.

So, I'm going to remove my test kit and install the final version, and you will have to remove the original connector and install the kit. 😊

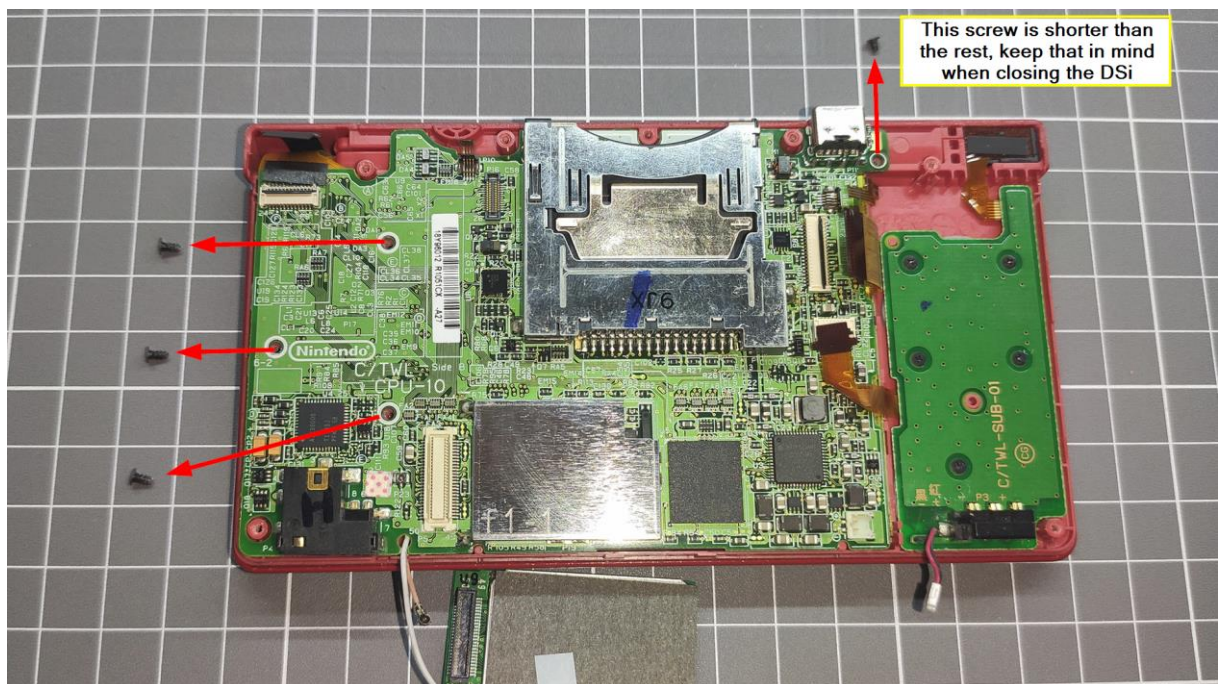
There are multiple cables connected to the mainboard. All of them need to be disconnected:

RED: Lift up on the plastic retainer, grip the cable, and pull back to disconnect it.

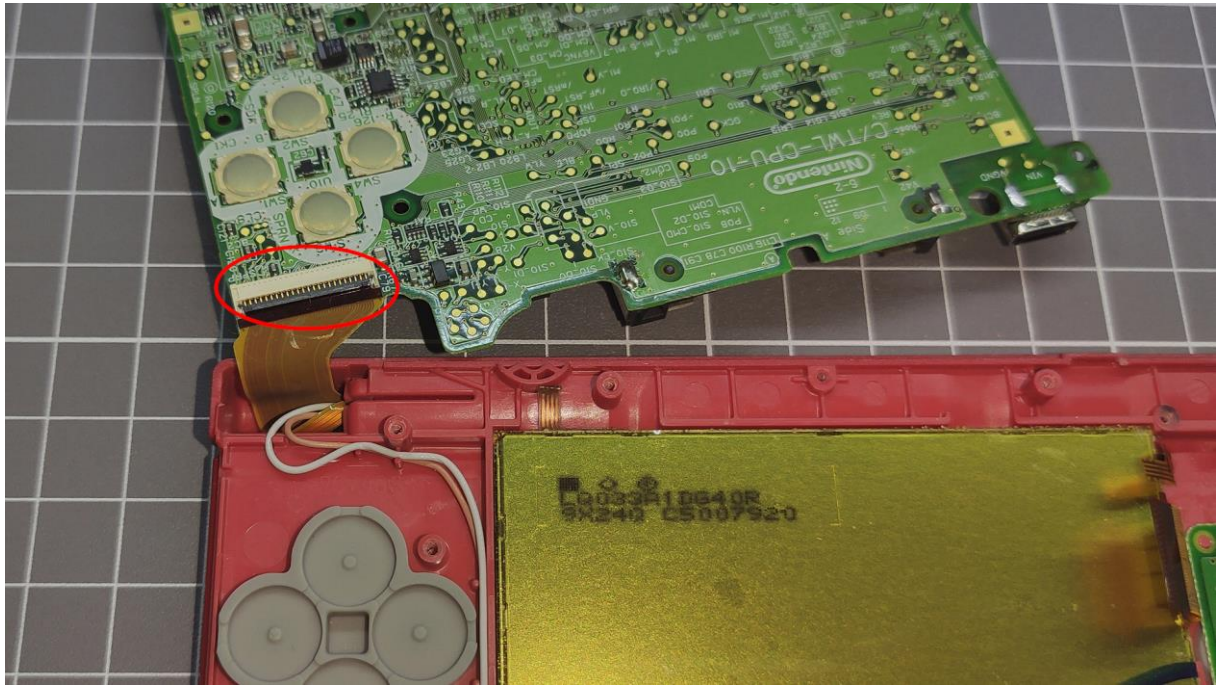
BLUE: Grip the cable, pull it upwards to disconnect it.



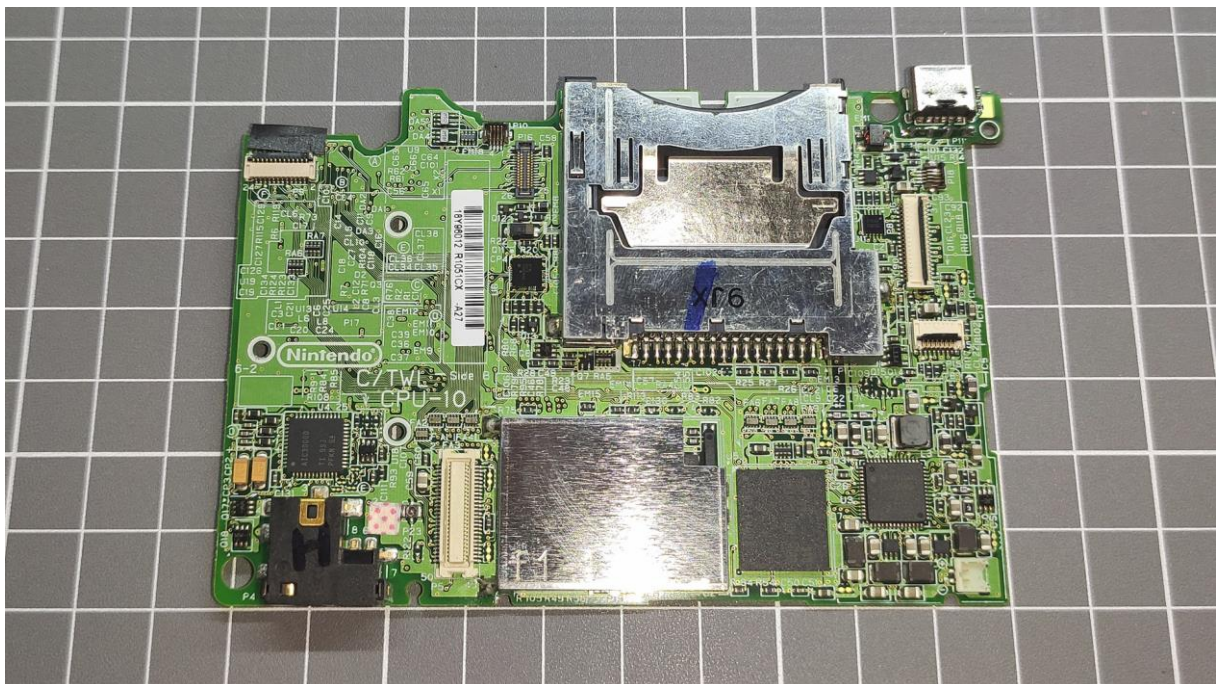
Then, remove the last 4 screws:



Don't forget to disconnect the last cable from the upper screen:



Finally, the mainboard is completely disconnected, and it can be retired aside:



INSTALLATION STEPS

1. PROTECT THE NEAREST COMPONENTS

Use Kapton tape to protect and avoid any damage to the electronic components that are next to the connector.

2. REMOVE UNNECESSARY COMPONENTS

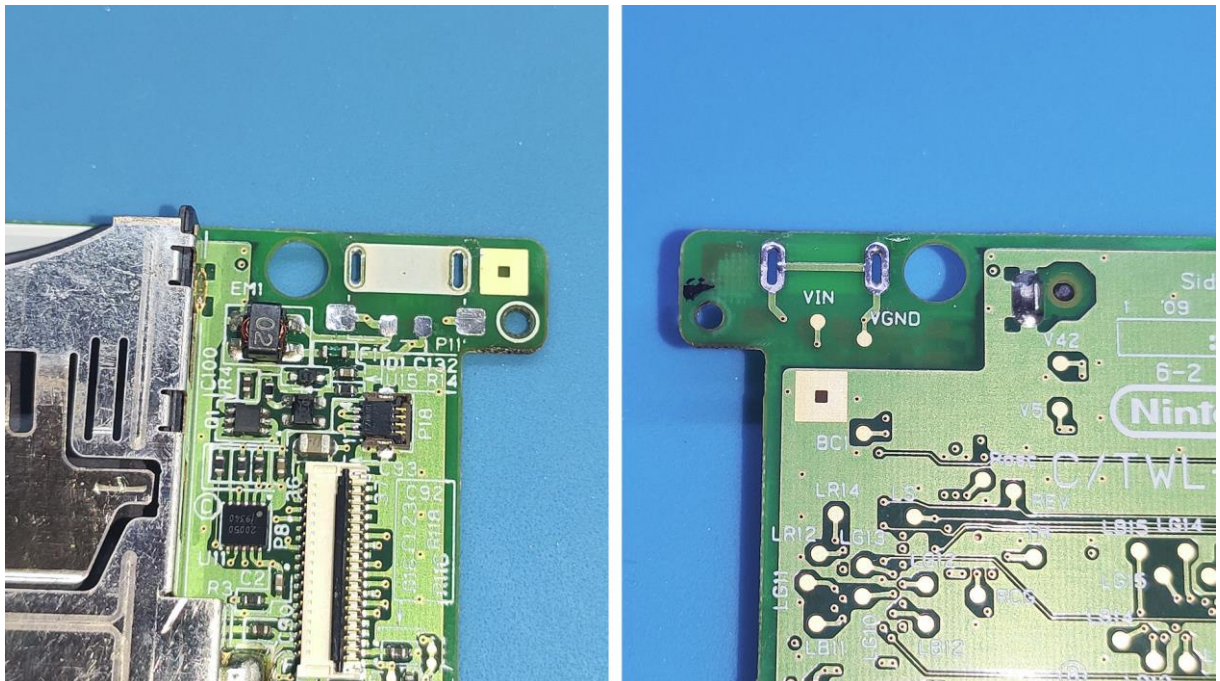
This kit only requires removing the power connector. However, it has many legs, and it may be hard to remove.

If you have an air solder station, you can remove it easily, but protect perfect the nearest places with Kapton tape or something may be burn.

Otherwise, the recommendation is using a **desoldering pump** which will help to remove the tin from each hole/pad.

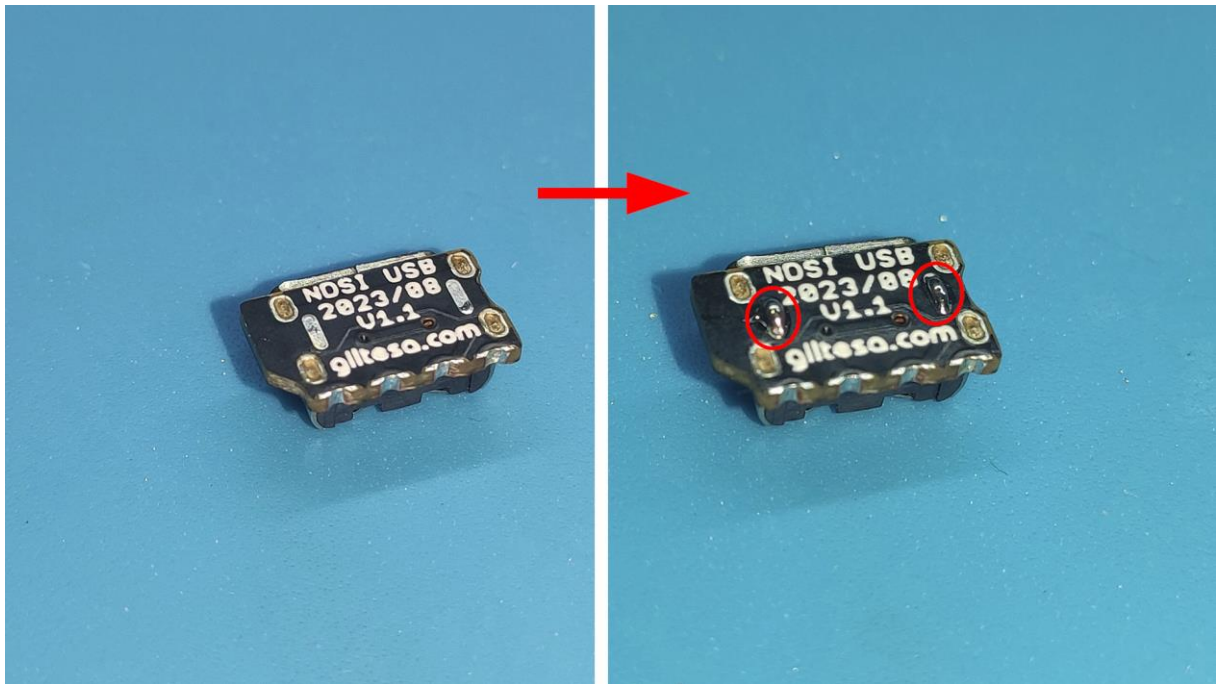
3. CLEAN THE BOARD

After the component is removed, it may be dirty, clean both sides.

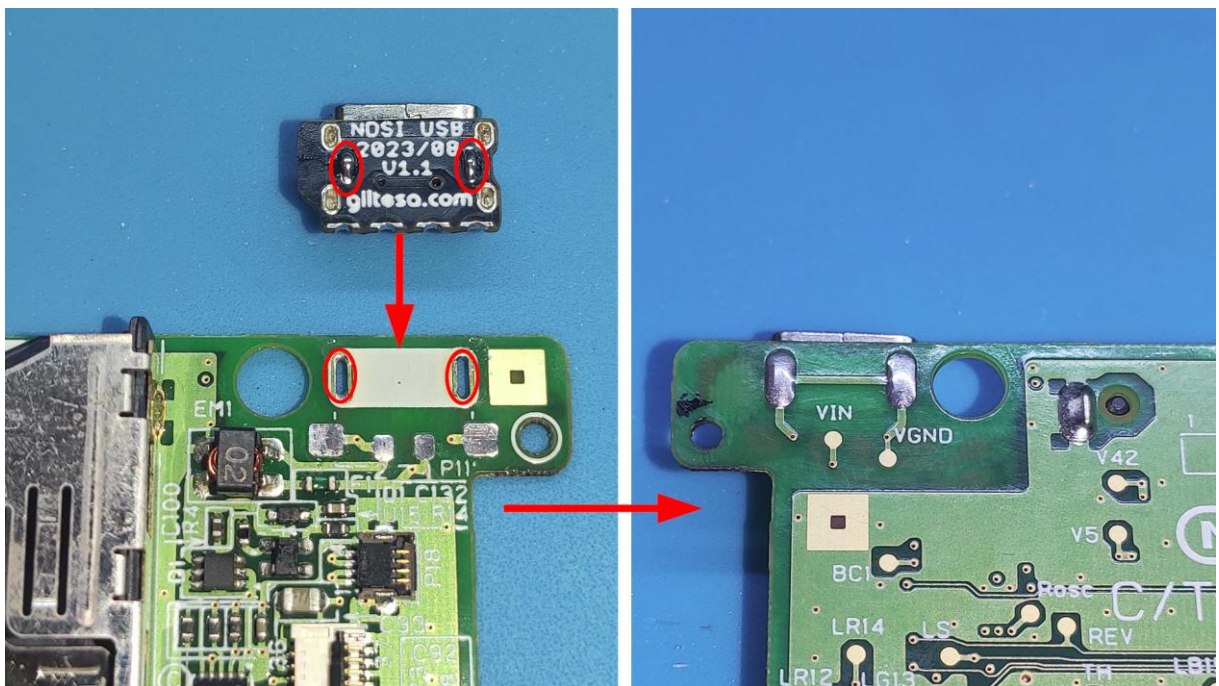


4. INSTALLATION OF THE USB-C BOARD

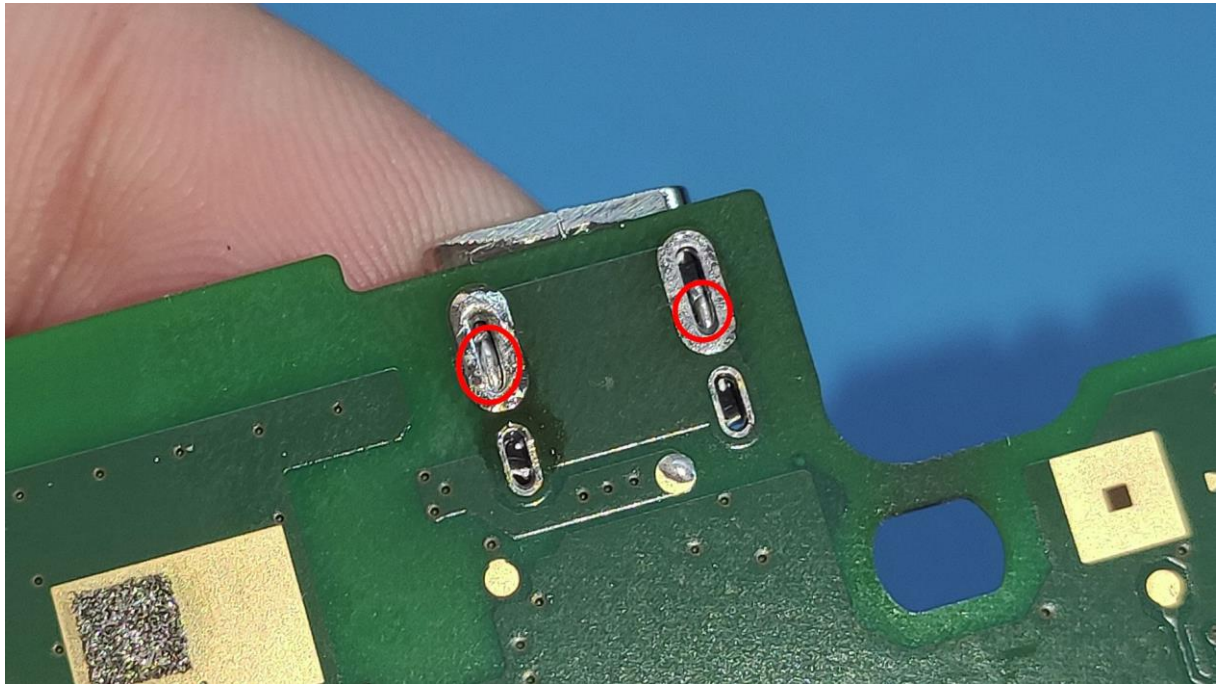
First, the bottom pads of the board need to be pre-soldered with a small amount of tin.



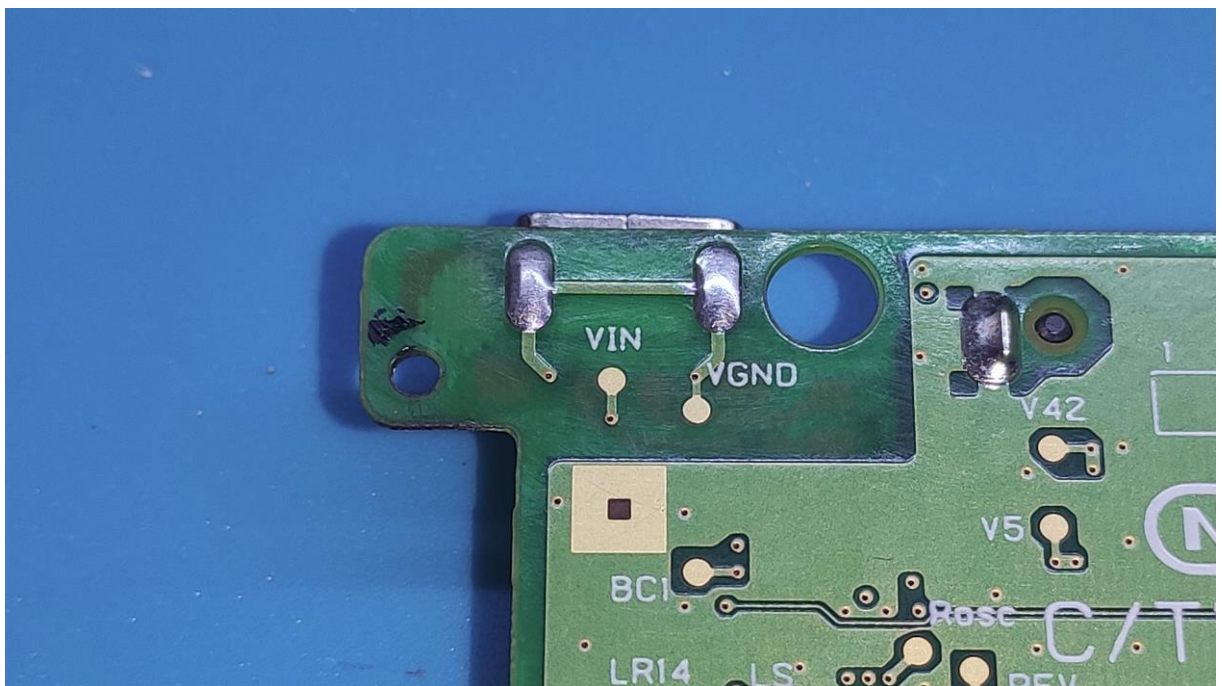
These pads will align with the large holes on the original connector. **It is crucial that these two pads are soldered securely** as they serve as the main points of support for the board.



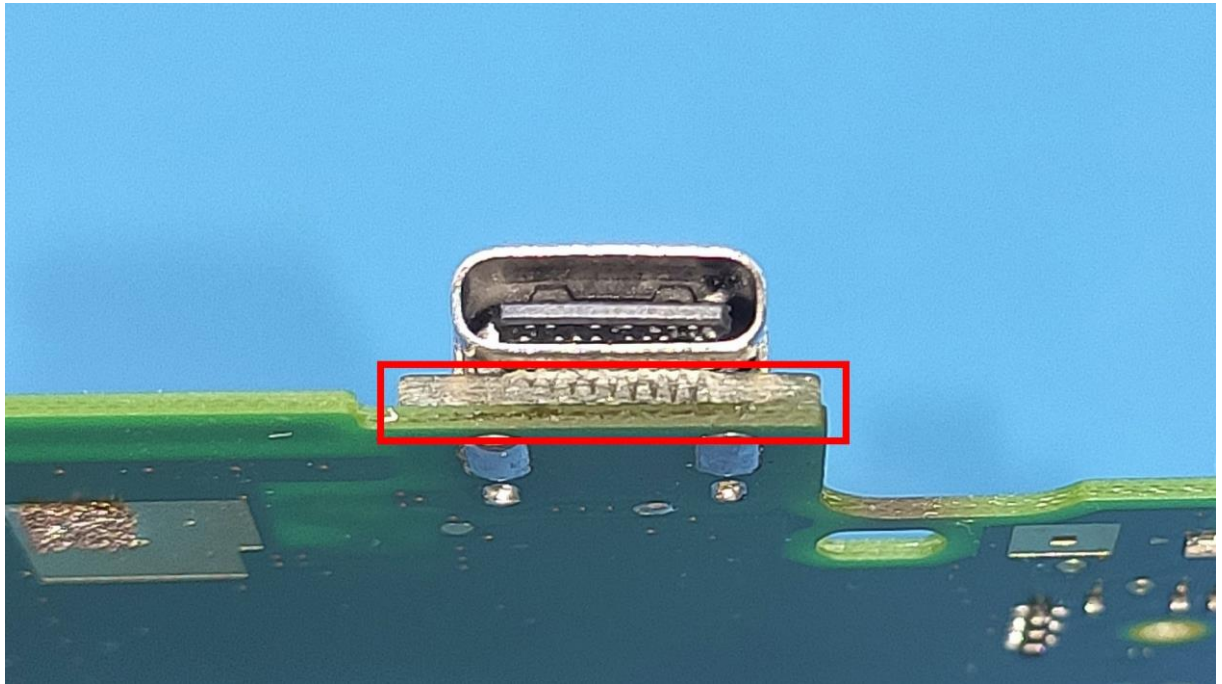
Align the board properly and solder the first pad on the bottom side. Then, double-check that the boards are still well aligned and solder the other one.



*This image is from a **Nintendo 2DS**, but I hope it's helpful to understand how to align the pads.*

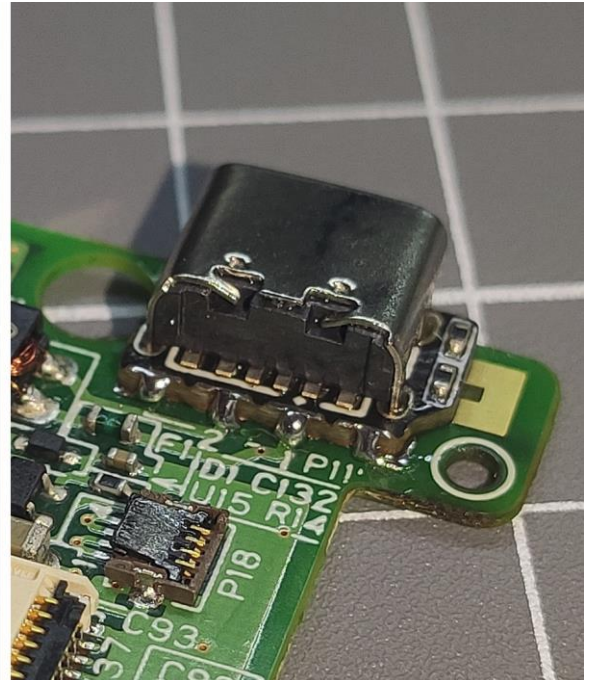
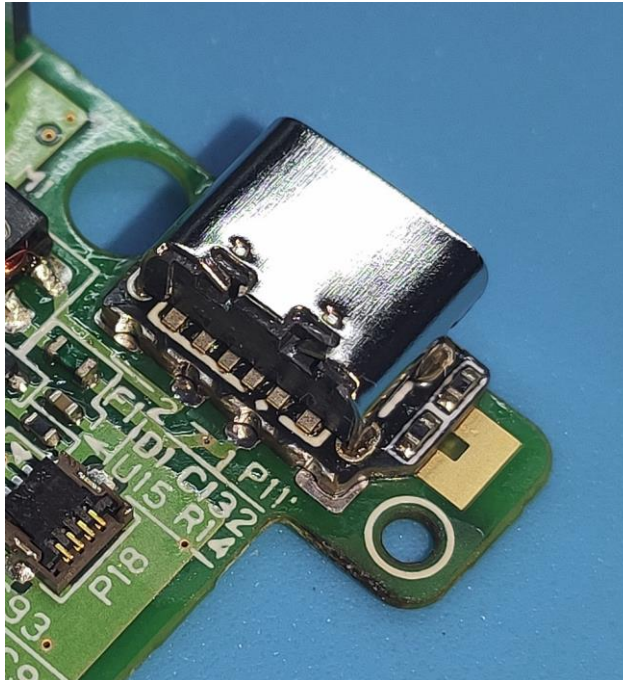


The board should be completely flat against the Nintendo DSi mainboard, without any gaps in the middle.

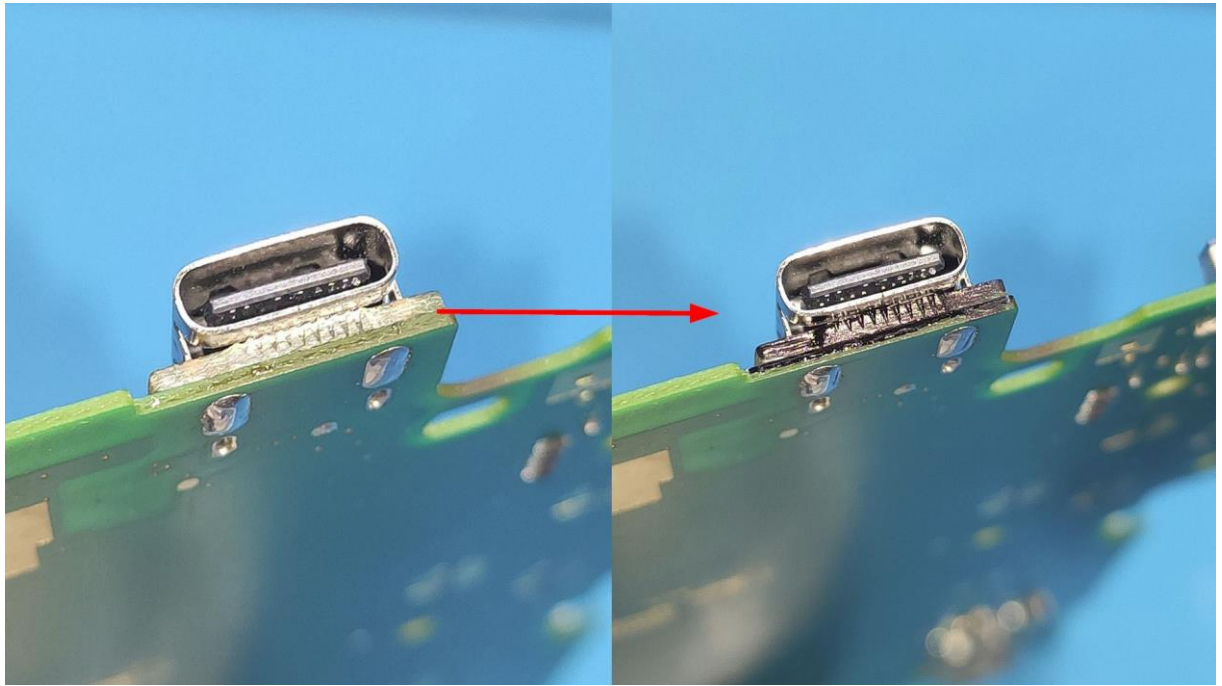


This image is from a Nintendo 2DS, but I hope it's helpful to understand how to align the pads.

If everything appears to be correct, proceed to solder the remaining four pads.



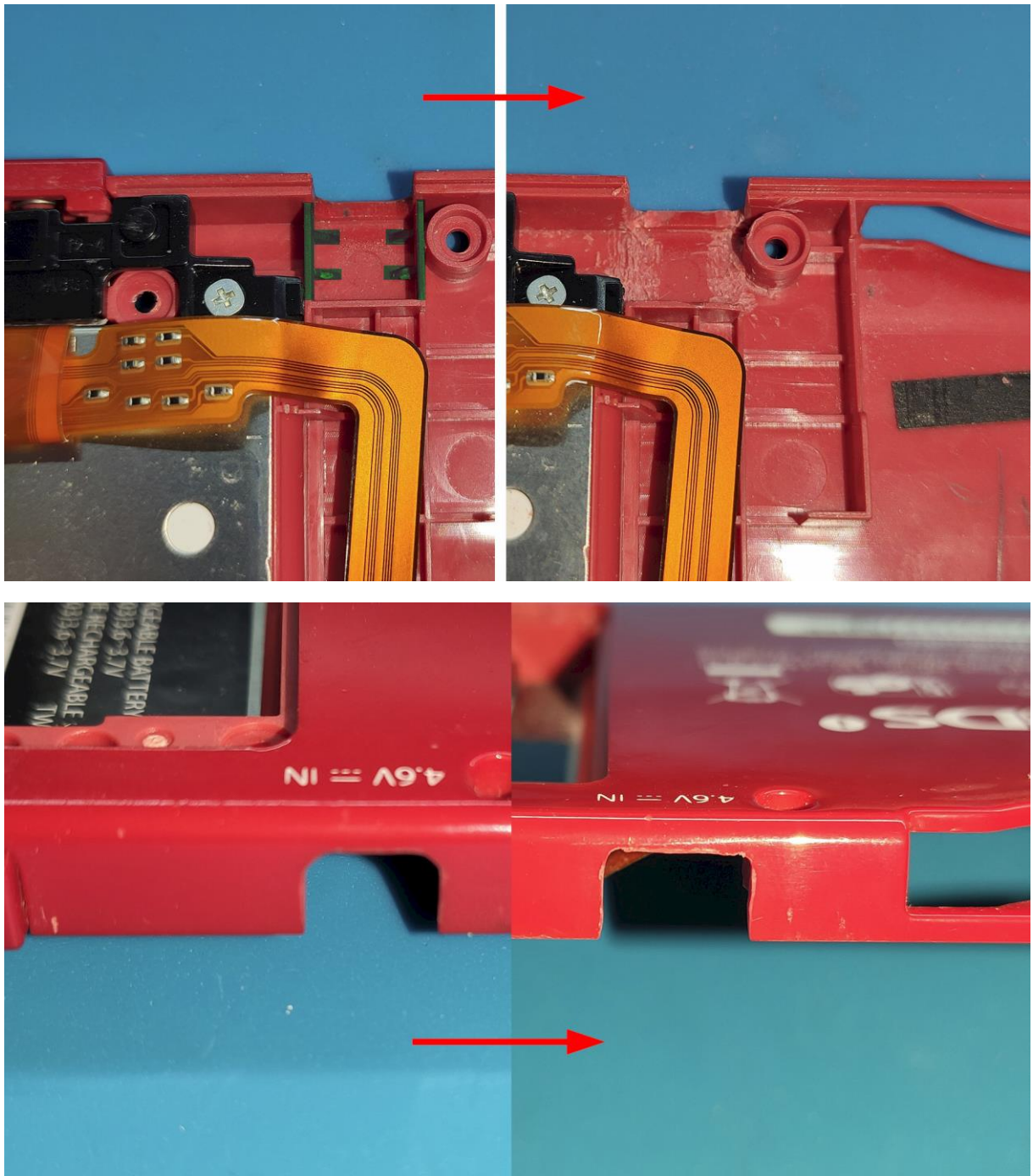
Optionally, the front side can be painted with a permanent black marker.



*This image is from a **Nintendo 2DS**, but I hope it's helpful to understand how to align the pads.*

5. CUTTING THE PLASTIC SHELL

The original connector hole in the shell is not enough big for the new USB-C connector, so it needs to be enlarged.



6. FINISHING THE INSTALLATION

Now, you can put the mainboard back to the shell, and put the screws and cables as before. Enjoy it!



FREQUENTLY ASKED QUESTIONS - FAQ

1. THE CONSOLE DOESN'T CHARGE WITH USB-C TO USB-C CABLES/CHARGERS.

All our kits incorporate two resistors to indicate to the charger that it is a legacy device and should charge at a maximum of 5V.

The only reason one might consider for it not working is that one might be using a charger/cable from Apple or another company that doesn't follow the standard 100%. Trying other cables, for example from the Nintendo Switch, a laptop, or another mobile device, should work.