

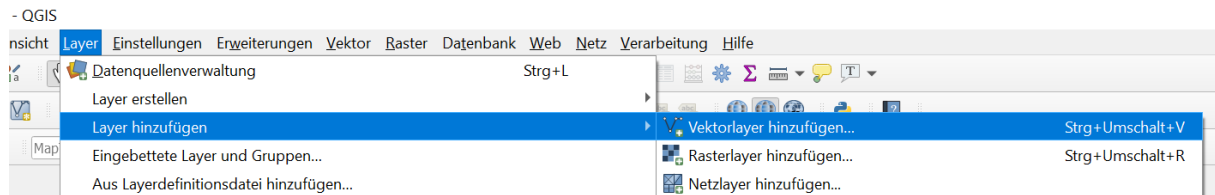
Instructions for Exercise 1 – Basics of GIS

1. Loading the data

1.1 Loading shapefile data

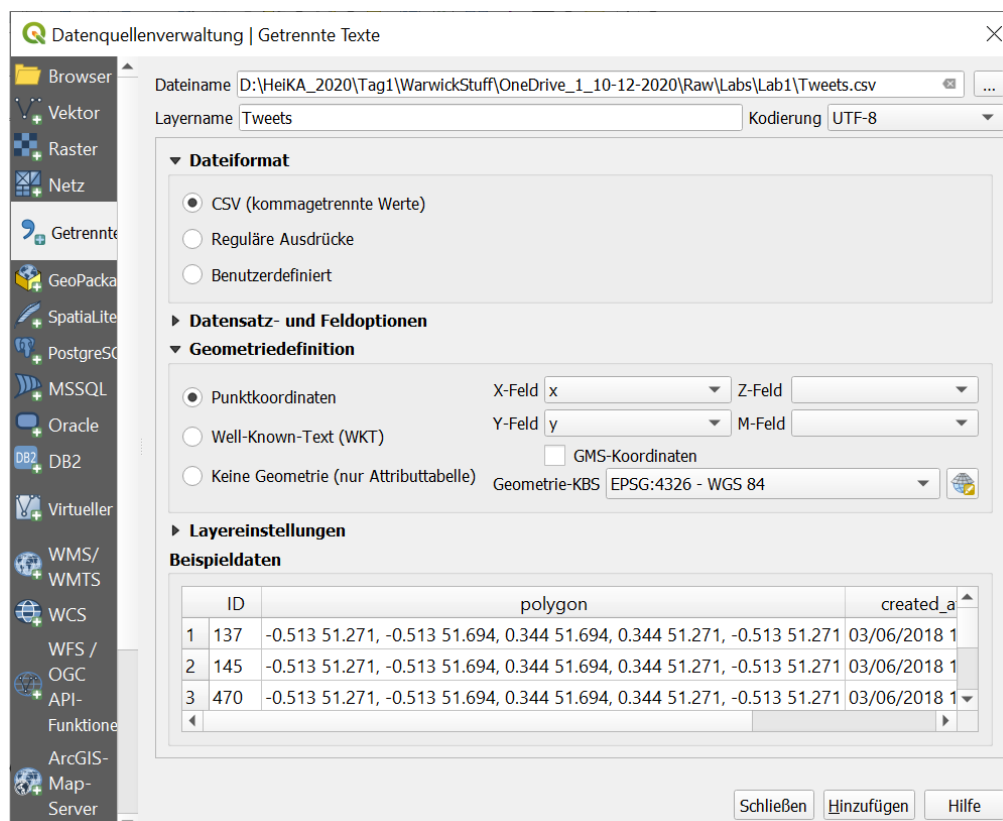
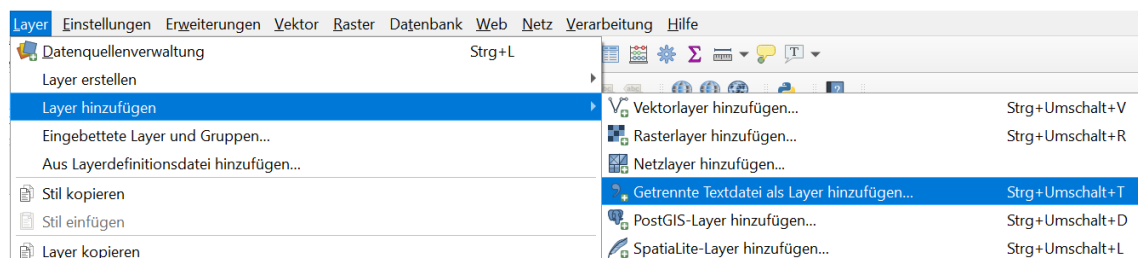
Please load the following files:

1. *London_Borough.shp*
2. *Registered_Parks_and_Gardens.shp*



1.2 Loading a table as a layer

Please load the file Tweets.csv

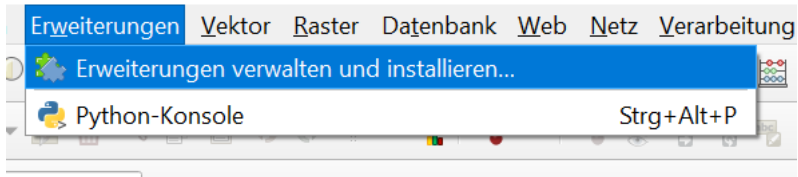


2. Visualizing OSM tiles

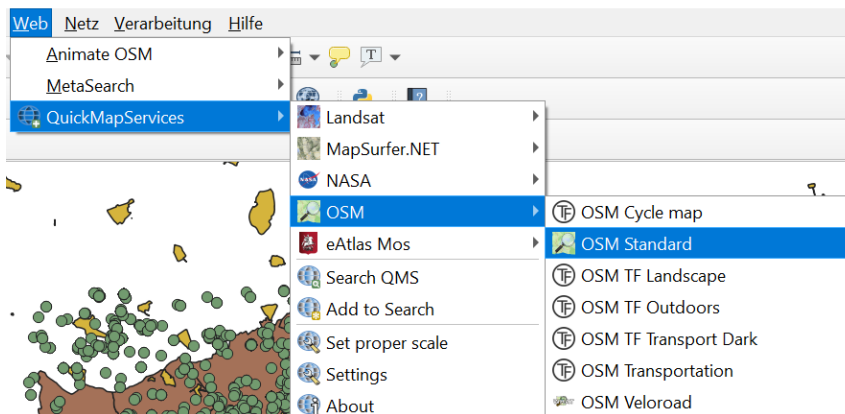
2.1 Install the necessary plug-ins

Please install the necessary plug-ins:

MapTiler, QuickMapServices, QuickOSM and OSMDowloader



2.2 Load the OSM tile for the area

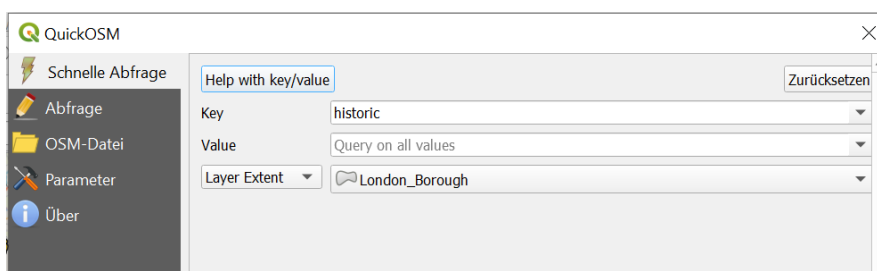
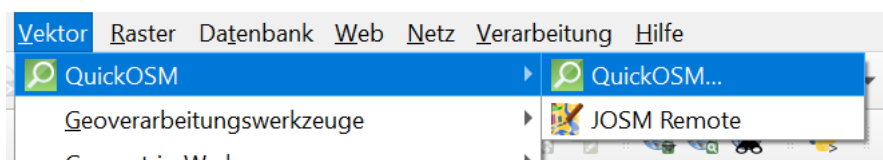


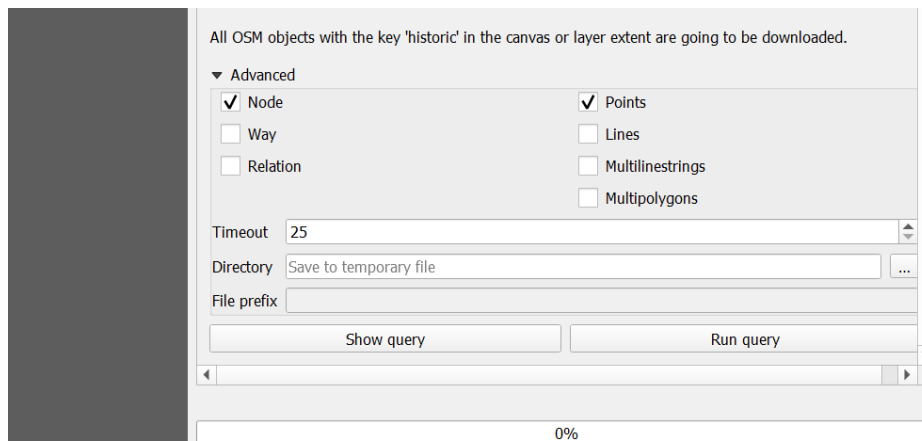
3. Downloading OSM data to the project

Please download all OSM nodes with tag key *historic*

Please download all OSM nodes with tag *amenity=restaurant*

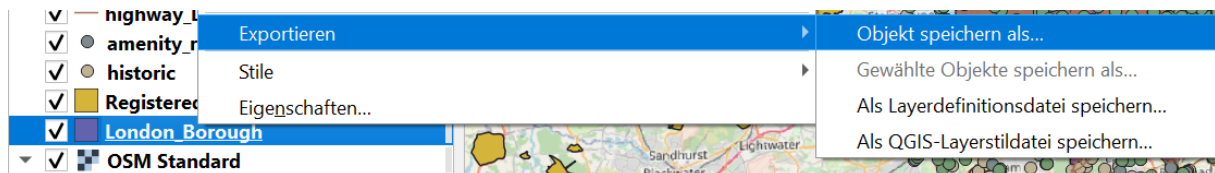
Please download all OSM ways with tag key *highway*





4. Export all layers to the same Coordinate Reference System (CRS)

Right-click each layer and export it to the same CRS, i.e. OSGB 1936 (EPSG:4277)



Load the new, i.e. re-projected versions of the layers, and eliminate the older versions.

5. Other explorative tasks

- Layer styling
- Exploitation of the attribute tables
- Save project

6. Questions

Do people tweet more from green areas?

How is the spatial distribution of tweets, historical venues and restaurants?

Are the tweets spatially correlated with historical venues and/or restaurants?