



The pH dependency of the boron isotopic composition of diatom opal (*Thalassiosira weissflogii*)

Hannah K. Donald¹, Gavin L. Foster¹, Nico Fröhberg¹, George E. A. Swann², Alex J. Poulton^{3,4}, C. Mark Moore¹, and Matthew P. Humphreys⁵

¹School of Ocean and Earth Science, National Oceanography Centre Southampton, University of Southampton, Southampton, SO14 3ZH, UK

²School of Geography, University of Nottingham, University Park, Nottingham, NG7 2RD, UK

³Ocean Biogeochemistry and Ecosystems, National Oceanography Centre, Southampton, SO14 3ZH, UK

⁴The Lyell Centre, Heriot-Watt University, Edinburgh, EH14 4AS, UK

⁵NIOZ Royal Netherlands Institute for Sea Research, Department of Ocean Systems (OCS), and Utrecht University, P.O. Box 59, 1790 AB Den Burg (Texel), the Netherlands

Correspondence: Gavin L. Foster (gavin.foster@noc.soton.ac.uk)

Received: 9 May 2019 – Discussion started: 23 May 2019

Revised: 25 March 2020 – Accepted: 21 April 2020 – Published: 27 May 2020

Abstract. The high-latitude oceans are key areas of carbon and heat exchange between the atmosphere and the ocean. As such, they are a focus of both modern oceanographic and palaeoclimate research. However, most palaeoclimate proxies that could provide a long-term perspective are based on calcareous organisms, such as foraminifera, that are scarce or entirely absent in deep-sea sediments south of 50° S in the Southern Ocean and north of 40° N in the North Pacific. As a result, proxies need to be developed for the opal-based organisms (e.g. diatoms) found at these high latitudes, which dominate the biogenic sediments recovered from these regions. Here we present a method for the analysis of the boron (B) content and isotopic composition ($\delta^{11}\text{B}$) of diatom opal. We apply it for the first time to evaluate the relationship between seawater pH, $\delta^{11}\text{B}$ and B concentration ([B]) in the frustules of the diatom *Thalassiosira weissflogii*, cultured across a range of carbon dioxide partial pressure ($p\text{CO}_2$) and pH values. In agreement with existing data, we find that the [B] of the cultured diatom frustules increases with increasing pH (Mejía et al., 2013). $\delta^{11}\text{B}$ shows a relatively well defined negative trend with increasing pH, completely distinct from any other biomineral previously measured. This relationship not only has implications for the magnitude of the isotopic fractionation that occurs during boron incorporation into opal, but also allows us to explore the potential of the boron-based proxies for palaeo-pH and palaeo- CO_2 re-

construction in high-latitude marine sediments that have, up until now, eluded study due to the lack of suitable carbonate material.

1 Introduction

The high-latitude regions, such as the Southern Ocean and the subarctic North Pacific Ocean, exert key controls on atmospheric carbon dioxide (CO_2) content. Both areas are where upwelling of deep carbon- and nutrient-rich water occurs, which promotes outgassing of previously stored carbon to the atmosphere and nutrient fertilisation of primary productivity, in turn drawing down CO_2 . The balance of processes involved in determining whether these oceanic regions are a source or sink of CO_2 is poorly understood, to the extent that the oceanic controls on glacial–interglacial pH and $p\text{CO}_2$ changes remain a subject of vigorous debate (e.g. Martin, 1990; Sigman and Boyle, 2000). Recently, several studies have shown how the boron isotope pH proxy applied to calcitic foraminifera successfully tracks surface water CO_2 content, thus documenting changes in air–sea CO_2 flux along the margins of these regions (e.g. Martínez-Botí et al., 2015; Gray et al. 2018). However, the lack of preserved marine carbonates in areas that are thought to be key in terms of glacial–interglacial CO_2 change (e.g. the polar Antarctic zone; Sig-

man et al., 2010) represents a currently insurmountable problem, preventing the determination of air–sea CO₂ flux using boron-based proxies in regions that are likely to play the most important role in glacial–interglacial CO₂ change. There is therefore a clear need for the boron isotope palaeo-pH proxy to be developed in biogenic silica (diatom frustules, radiolarian shells), which is preserved in high-latitude settings, to better understand these key regions and their role in natural climate change.

The boron isotopic system has been used extensively in marine carbonates for the reconstruction of past ocean pH and past atmospheric *p*CO₂ (e.g. Hemming and Hanson, 1992; Pearson and Palmer, 2000; Hönisch and Hemming, 2005; Foster, 2008; Henahan et al., 2013; Chalk et al., 2017; Sosdian et al., 2018). Comprehensive calibration work has been completed for numerous species of foraminifera that are currently used in palaeoceanographic reconstruction (e.g. Henahan et al., 2016; Rae et al., 2011). From this it has been shown that while $\delta^{11}\text{B}$ compositions are fairly similar among carbonates, species-specific differences exist in the relationship between the $\delta^{11}\text{B}$ of dissolved borate and that of foraminifera. Once this relationship is known, this $\delta^{11}\text{B}$ –pH calibration can be applied to fossils found in deep-sea sediment cores, reliably reconstructing past ocean pH and *p*CO₂ (e.g. Hönisch and Hemming, 2005; Foster, 2008; Hönisch et al., 2009; Chalk et al., 2017). However, thus far the boron isotopic composition (expressed as $\delta^{11}\text{B}$) and B concentration ([B]) of the siliceous fraction of deep-sea sediments remain poorly studied.

Early exploratory work by Ishikawa and Nakamura (1993) showed that biogenic silica and diatom ooze collected from modern deep-sea sediments in the North Pacific and equatorial Pacific had relatively high boron contents (70–80 ppm) but a very light isotope ratio. For example, a diatom ooze was shown to have a $\delta^{11}\text{B}$ of -1.1‰ whilst radiolarian shells had a $\delta^{11}\text{B}$ of $+4.5\text{‰}$. While some of this light $\delta^{11}\text{B}$ may have partly arisen due to clay contamination (reducing the diatom ooze sample by up to 3‰; Ishikawa and Nakamura, 1993), it also likely reflects an opal : seawater isotopic fractionation arising from the substitution of borate for silicate in tetrahedral sites in the opal (Ishikawa and Nakamura, 1993). A similarly light $\delta^{11}\text{B}$ was also observed in marine cherts from deep-sea sediments by Kolodny and Chaussidon (2004; -9.3 to $+8\text{‰}$), but these are likely diagenetic and therefore unlikely to be primary seawater precipitates. A recent culture study of the diatoms *Thalassiosira weissflogii* and *T. pseudonana* showed that the boron content of cultured opal was significantly lower than suggested by the bulk sampling of Ishikawa and Nakamura (1993) at around 5–10 ppm, increasing as pH increased from 7.6 to 8.7 (Mejía et al., 2013). This suggests the seawater tetrahydroxyborate anion (borate; $\text{B}(\text{OH})_4^-$) is predominantly incorporated into the diatom frustule rather than boric acid ($\text{B}(\text{OH})_3$), and it implies there is potential for the boron content of diatom opal to trace pH in the past (Mejía et al., 2013).

Here, the relationship between $\delta^{11}\text{B}$ of the frustules of the diatom *T. weissflogii* and seawater pH is investigated for the first time using a batch culturing technique and different air–CO₂ mixtures to explore a range of pH (8.53 ± 0.73 to 7.48 ± 0.08). The aim of this study was also to develop a methodology for measuring the boron isotopic composition of biogenic silica by MC-ICP-MS (multicollector inductively coupled plasma mass spectrometry) and apply this method to explore the response of the boron-based proxies ([B] and $\delta^{11}\text{B}$) in diatom frustules to changing pH. Ultimately, we show how boron isotopes measured in diatom frustules may provide further insight into boron uptake and physiological activity within diatoms and test the potential of $\delta^{11}\text{B}$ and boron content in diatoms as proxies for the ocean carbonate system.

2 Methods

2.1 Experimental setup

The centric diatom *T. weissflogii* (Grunow in van Heurck, PCC 541, CCAP 1085/1; Hasle and Fryxell, 1977) was grown in triplicate in enriched sterile and filtered seawater (K/1; 0.2 µm; seawater sourced from Labrador Sea; Keller et al., 1987) in 3 L glass Erlenmeyer flasks for a maximum of 1 week for each experiment. Initial nutrient concentrations within the seawater before enrichment were assessed on a SEAL Analytical QuAAtro analyser with a UV–Vis spectrometer and ranged from 23.3 to 27.5 µM for nitrate (+ nitrite), 4.3 to 5.4 µM for silicic acid and 1.4 to 1.6 µM for phosphate. The culture experiments were bubbled with air–CO₂ mixtures in different concentrations (sourced from BOC; <https://www.boconline.co.uk>, last access: 24 March 2020) to provide a pH range at constant bubble rates, and every flask was agitated by hand twice daily to limit algal settling and aggregation. The monocultures were grown in nutrient-replete conditions at constant temperature (20 °C) and on a 12 h : 12 h light–dark cycle (with $192 \mu\text{E m}^{-2} \text{s}^{-1}$, or $8.3 \text{E m}^{-2} \text{d}^{-1}$ during the photoperiod). The diatoms were acclimated to each *p*CO₂ treatment for at least 10 generations before inoculating the culture experiment flasks. All culture handling was completed within a laminar flow hood to ensure sterility. The flow hood surfaces were cleaned with 90 % ethanol before and after handling, as well as the outer surface of all autoclaved labware entering the laminar flow hood such as bottles and pipettes.

The cultured diatom samples were collected by centrifugation at 96 h, during the exponential growth phase. Each flask was simultaneously disconnected from the gas supply with the culture immediately centrifuged at 3700 rpm for 30 min into a pellet, rinsed with Milli-Q and frozen at -20 °C in sterile plastic 50 mL centrifuge tubes. Around 10 mg of diatom biomass was harvested in each experiment.

2.2 Growth rate and cell size

A 5 mL subsample was taken from each culture flask through sterilised Nalgene tubing into sterile syringes and sealed in sterile 15 mL centrifuge tubes. Triplicate cell counts using a Coulter Multisizer™ 3 (Beckman Coulter) were performed daily on each experimental flask. Growth rates were calculated using Eq. (1):

$$\mu = (\ln N_t - \ln N_i) / (t - t_i), \quad (1)$$

where N_i is the initial cell density at the start of the experiment (t_i) and N_t is the cell density at time t . Triplicate estimates of cell size were also determined using the Coulter Multisizer™ 3 to determine the mean cell size over time in each flask. Figure 1 shows that although there is no statistically significant relationship between pH and diatom growth rate, cell size does show a small, but statistically significant, positive slope.

2.3 pH, DIC and $\delta^{11}\text{B}$ of the culture media

A pH meter (Orion 410A) calibrated using standard National Bureau of Standards (NBS) buffers prior to sample extraction was used to monitor the evolution of pH through the experiment on a daily basis. For fully quantitative constraints on the carbonate system of the culture media, dissolved inorganic carbon (DIC) was measured in triplicate, every other day, for each pH treatment (i.e. once per experiment flask). The 100 mL sample bottles were filled to overflowing and immediately closed with ground glass stoppers, then uncapped to be poisoned with 20 μL saturated mercuric chloride solution (HgCl_2) to prevent any further biologically induced changes in DIC, before being sealed with a 1 mL air headspace and Apiezon L grease, and stored in complete darkness until analysis (Dickson et al., 2007). Analysis of DIC was performed by acidification with excess 10 % phosphoric acid and CO_2 transfer in a nitrogen gas stream to an infrared detector using a DIC analyser AS-C3 (Apollo SciTech, DE, USA) at the University of Southampton. The DIC results were calibrated using measurements of batch 151 certified reference material obtained from A. G. Dickson (Scripps Institution of Oceanography, CA, USA). The accuracy of the DIC analysis was ca. 3 $\mu\text{mol kg}^{-1}$. Carbonate system parameters, including seawater $p\text{CO}_2$, were calculated using measured pH_{NBS} and DIC values, temperature, salinity, and nutrients with the CO_2SYS v1.1 program (van Heuven et al., 2011; using constants from Dickson, 1990; Lueker et al., 2000; Lee et al., 2010), which was also used to convert pH meter readings from the NBS to the total scale (used throughout).

All flasks were initially filled with media from the same large batch, and all culture treatments therefore started with the same initial pH. The pH for all treatments was then altered by bubbling through the different air– CO_2 mixtures, ranging from low pH (target = 1600 ppm, high $p\text{CO}_2$) to high pH (target = 200 ppm, low $p\text{CO}_2$). Almost all treat-

ments held relatively constant DIC and pH until the final 24 h of the experiment, when marked changes in DIC and pH in all culture treatments were observed (Fig. 2), which in most cases was likely due to the growth of diatoms and an associated net removal of DIC, despite the constant addition of $p\text{CO}_2$. In order to account for these non-steady-state conditions of the carbonate system, the mean pH and $p\text{CO}_2$ of each treatment were calculated based on the number of cells grown per 24 h along with the pH/ $p\text{CO}_2$ measured in that 24 h, thus adjusting for the observed exponential growth rate of *T. weissflogii* (Table 1).

The boron concentration of the culture media was not determined but is assumed to be the same as Labrador seawater (~ 4.5 ppm; Lee et al., 2010). The boron isotopic composition of the culture media was determined using standard approaches (Foster et al., 2010) to be 38.8 ± 0.19 ‰ (2 SD).

2.4 Preparing cultured diatoms for $\delta^{11}\text{B}$ and B/Si analysis

In order to examine reproducibility and accuracy of our boron measurements, an in-house diatom reference material was used to develop a method for measuring boron isotopes and boron concentration in biogenic silica. A British Antarctic Survey core catcher sample (TC460) from core TC460 in the Southern Ocean (-60.81534°N , -50.9851°E ; water depth 2594 m) was used for this purpose (supplied by Claus-Dieter Hillenbrand, British Antarctic Survey). Although the diatom assemblage was not characterised in the core catcher, the nearest sediment sample in the core is dominated by *Hyalochaete chaetoceros* resting spores, representing circa 70 % of the total diatom content, with sea ice and cool open water species making up the bulk of the remaining 30 % (e.g. *Actinocyclus actinochilus*, *Fragilariopsis curta*, *F. cylindrus*, *F. obliquocostata*, *Odontella weissflogii* and *Thalassiosira antarctica*). A pure diatom sample of mixed species was separated from this bulk sediment and cleaned of clay contamination at the University of Nottingham following an established diatom separation technique (Swann et al., 2013). Briefly, the bulk sample underwent organic removal and carbonate dissolution (using 30 % H_2O_2 and 5 % HCl), heavy liquid separation in several steps at different specific gravities using sodium polytungstate (SPT) and visual monitoring throughout the process to ensure the sample was free from non-diatom material, such as clay particulates. After the final SPT separation, samples were rinsed thoroughly with Milli-Q and sieved at 10 μm to remove all SPT traces.

The culture samples and the diatom fraction from TC460 were first acidified (H_2SO_4), and organics were oxidised using potassium permanganate and oxalic acid (following Horn et al., 2011, and Mejía et al., 2013). The samples were rinsed thoroughly using Milli-Q water via centrifugation and transferred to acid-cleaned Teflon beakers. A secondary oxidation was completed under heat using perchloric acid. Finally, the

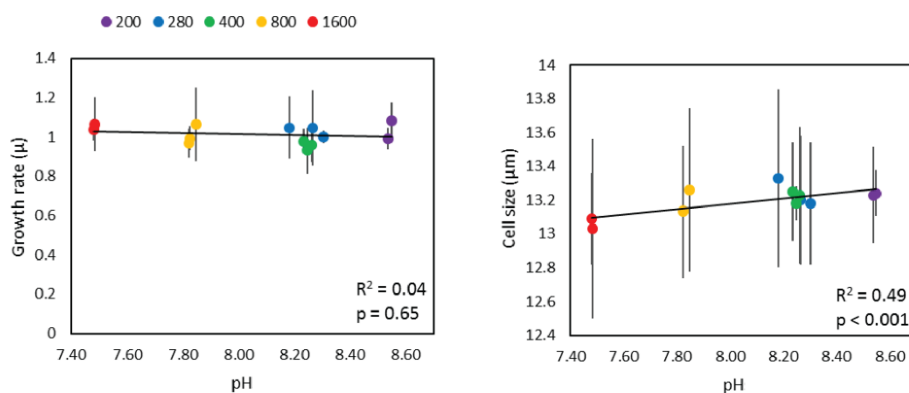


Figure 1. Diatom growth rate and cell size as a function of pH labelled according to CO_2 treatment. Linear-least-squares regressions, including R^2 and p values are also shown.

Table 1. Mean carbonate system parameters experienced under the average growth conditions as calculated for each culture treatment on the basis of the number of cells grown in each 24 h period of the batch experiment.

Treatment	$p\text{CO}_2$ (ppm)	2σ	pH	2σ	DIC (μM)	2σ	HCO_3^- (μM)	2σ	Growth rate (d^{-1})
200	125	8	8.53	0.73	1925	61	1091	59	1.03
280	244	73	8.25	0.41	2165	113	1521	260	1.03
400	267	28	8.25	0.44	2400	115	1728	107	0.96
800	809	62	7.83	0.24	2525	56	2206	69	1.01
1600	2117	40	7.48	0.08	2791	21	2628	22	1.01

organic-free samples were rinsed thoroughly with Milli-Q via filtration.

In the boron-free HEPA-filtered clean laboratory at the University of Southampton, each sample was dissolved completely in a gravimetrically known amount of NaOH (0.5 M from 10 M concentrated stock supplied by Fluka) at 140°C for 6 to 12 h and briefly centrifuged prior to boron separation to ensure no insoluble particles were loaded onto the boron column. Anion exchange columns containing Amberlite IRA 743 resin were then used to separate the matrix from the boron fraction of each sample following Foster (2008). Briefly, the dissolved opal was loaded directly onto the column without buffering and the matrix removed with $9 \times 200 \mu\text{L}$ washes of Milli-Q. This was collected for subsequent analysis, and the pure boron fraction was then eluted and collected in $550 \mu\text{L}$ of 0.5 M HNO_3 acid. The level of potential contamination was frequently monitored using total procedural blanks (TPBs) measured in every batch of columns. The TPBs comprised an equivalent volume of sodium hydroxide (NaOH, 0.5 M) as used in the samples of each batch (ca. 0.2–4 mL). This was analysed following the sample analysis protocols detailed below; typically the TPBs for this work contained less than 40 pg of boron. This equates to a typical blank contribution of ca. 0.015 %, which results in a negligible correction and is therefore ignored here.

Prior to isotope analysis, all boron fractions were collected in pre-weighed acid-cleaned Teflon beakers, and their mass was recorded using a Precisa balance. A $10 \mu\text{L}$ aliquot was taken and diluted with $490 \mu\text{L}$ 0.5 M HNO_3 in acid-cleaned plastic centrifuge tubes (2 mL). This was then analysed using a Thermo Fisher Scientific Element 2XR ICP-MS at the University of Southampton, with boron concentration determined using standard approaches and a gravimetric standard containing boron, silicon, sodium and aluminium. In order to determine the B/Si ratio and hence the B concentration of the opal, the Si concentration must also be quantitatively measured. This is achieved here by using a known concentration and mass of NaOH to dissolve each sample; by measuring the Si/Na ratio the Si concentration of each opal sample can be determined. From this, assuming a chemical formula of $\text{SiO}_2 \cdot \text{H}_2\text{O}$ and a H_2O content of 8 % (Hendry and Anderson, 2013), the B content of the opal in parts per million can be estimated. As detailed above, during the purification procedure, sample matrix was washed off the column using Milli-Q and collected in pre-weighed acid-cleaned Teflon beakers. These samples were then diluted with 3 % HNO_3 enriched with Be, In and Re for the internal standardisation and measured on the Thermo Scientific XSeries ICP-MS. The standards run on the XSeries consisted of varied concentrations of the gravimetric standard also used on the Element 2XR ICP-MS, containing B, Si, Na and Al.

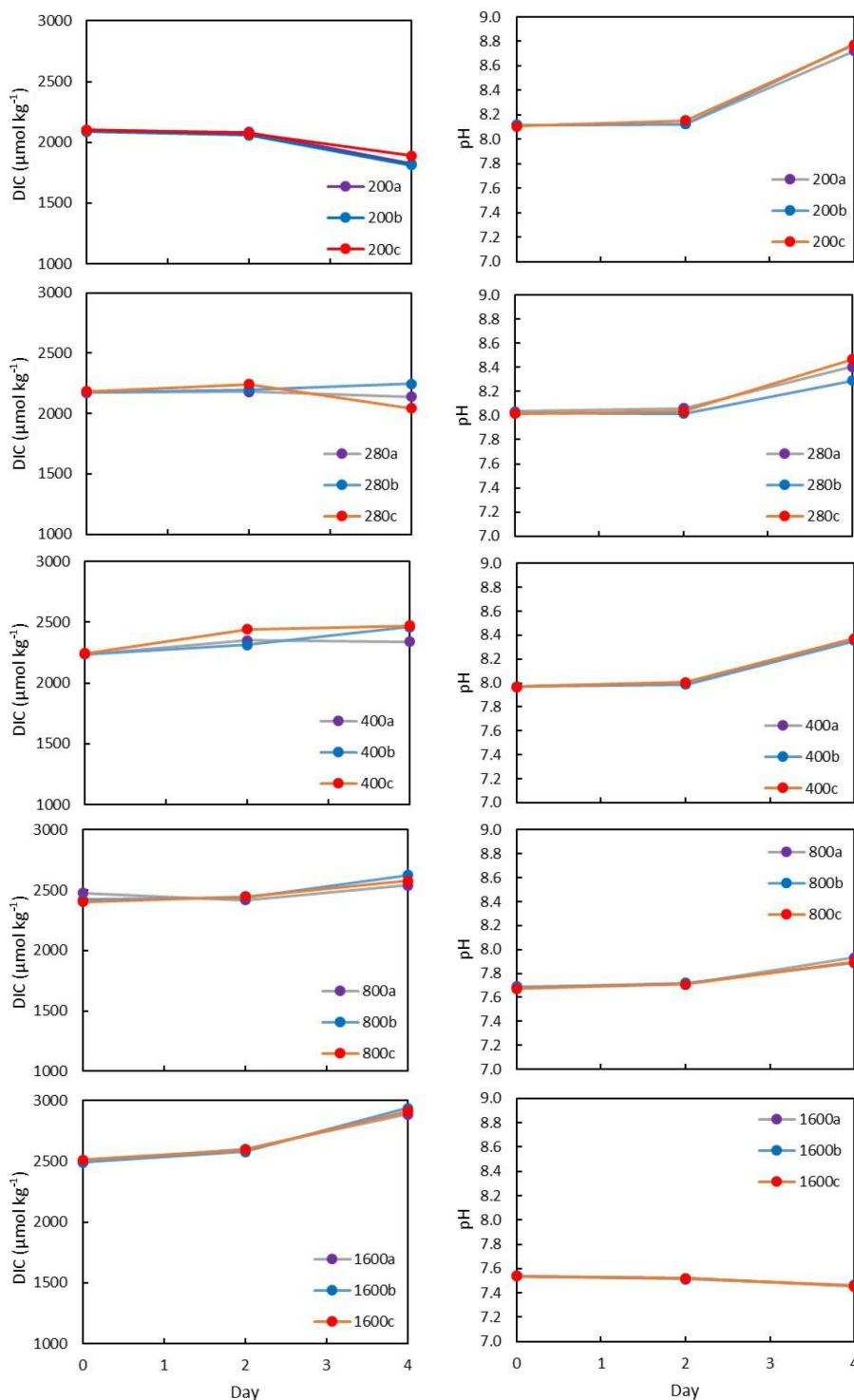


Figure 2. Each culture treatment labelled according to target $p\text{CO}_2$ and showing the evolution in the culture media through the experiment. All treatments exhibit changes in DIC due to diatom growth balanced with the input of CO_2 . The higher $p\text{CO}_2$, the more DIC increases towards the end of the experiment.

The boron isotopic composition of the biogenic silica samples was determined on a Thermo Scientific Neptune MC-ICP-MS, also situated in a boron-free HEPA-filtered laboratory at the University of Southampton, following Foster (2008). Instrument-induced fractionation of the $^{11}\text{B}/^{10}\text{B}$ ratio was corrected using a sample-standard bracketing routine with NIST SRM 951, following Foster (2008). This allows a direct determination of $\delta^{11}\text{B}$ without recourse to an absolute value for NIST SRM 951 (Foster, 2008) using the following equation, where $^{11}\text{B}/^{10}\text{B}_{\text{standard}}$ is the mean $^{11}\text{B}/^{10}\text{B}$ ratio of the standards bracketing the sample of interest.

$$\delta^{11}\text{B} = \left[\left(\frac{^{11}\text{B}/^{10}\text{B}_{\text{sample}}}{^{11}\text{B}/^{10}\text{B}_{\text{standard}}} \right) - 1 \right] \times 1000 \quad (2)$$

The reported $\delta^{11}\text{B}$ is an average of the two analyses, with each representing a fully independent measurement (i.e. the two measurements did not share blanks or bracketing standards). Machine stability and accuracy was monitored throughout the analytical session using repeats of NIST SRM 951, as well as boric acid reference materials AE120, AE121 and AE122 that gave $\delta^{11}\text{B}$ (± 2 SD) of $-20.19 \pm 0.20\%$, $19.60 \pm 0.28\%$ and $39.31 \pm 0.28\%$, which are within the error of the gravimetric values from Vogl and Rosner (2012).

The reproducibilities of the $\delta^{11}\text{B}$ and [B] measurements were assessed by repeat measurements of TC460 of different total B concentration (11 to 34 ng of B). In order to assess the accuracy of this method, we follow Tipper et al. (2008) and Ni et al. (2010) and use standard addition. To this end, known amounts of NIST SRM 951 standard were mixed with known quantities of TC460. All mixtures were passed through the entire separation and analytical procedure, including aliquots of pure standard and sample. A sodium acetate–acetic acid buffer was added to all 951 boric acid used prior to mixing, to ensure the pH was sufficiently elevated for the column separation procedure (following Foster, 2008). The amount of biogenic silica matrix added to the columns for each mixture was kept constant, so the volume added to the column was altered for each mixture accordingly. Uncertainty in the $\delta^{11}\text{B}$ calculated for each mixture was determined using a Monte Carlo procedure ($n = 1000$) in R (R Core Team, 2019) propagating uncertainties, at 95 % confidence, in known isotopes ratios ($\pm 0.2\%$), sample concentration ($\pm 6\%$) and measured masses ($\pm 0.5\%$).

3 Results and discussion

3.1 Analytical technique

3.1.1 Purification

The Na, Si and Al concentrations of the matrix fraction of several replicates of the diatom fraction of TC460 are shown

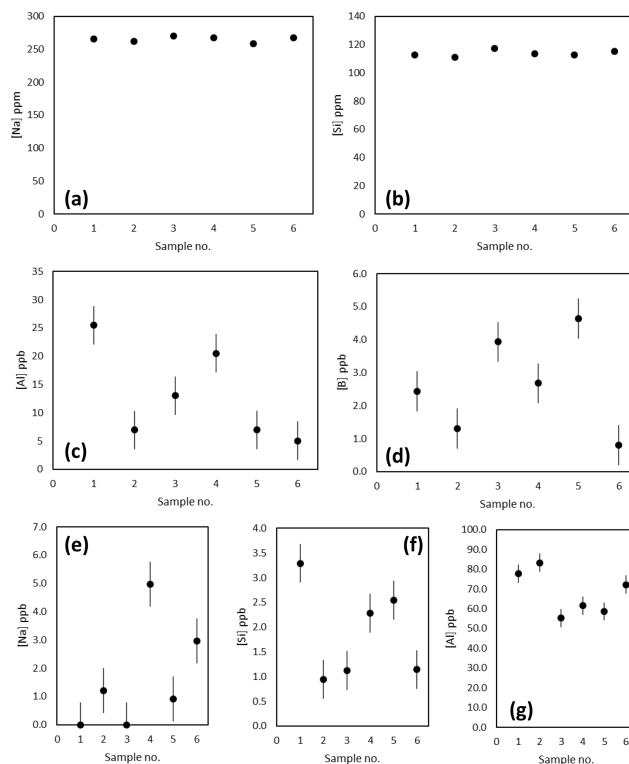


Figure 3. (a–d) Concentration of Na, Si, Al and B in the matrix fraction by ICP-MS. These analyses suggest blank levels of B are present in the matrix washed off the Amberlite IRA 743 resin-based column. (e–f) Concentration of the Na, Si and Al in the boron fraction indicating blank levels of Na (ca. 1.7 ppb) and Si (ca. 1.9 ppb) and a higher concentration of Al (ca. 68 ppb) are present.

in Fig. 3a–d. Prior to purification, Na and Si concentrations were consistently around 265 and 114 ppm respectively, whereas Al was more variable at 5–25 ppb. The boron content of these matrix samples in all cases was at the blank level. The concentration of these elements in the boron fraction is shown in Fig. 3e–g, highlighting that the column procedure was sufficient to concentrate boron and remove Na and Si, which are both present at the sub-5 ppb level (i.e. at less than 0.002 % of matrix concentration). The Al is likely present in the diatom frustule (e.g. Koning et al., 2007) and is elevated in the boron fraction compared to the matrix fraction (Fig. 3). Diatom-bound Al is likely present as the anion $\text{Al}(\text{OH})_4^-$, hence its elevation in the boron fraction. Although this is a detectable level of Al, it is unlikely that this level of contamination will influence the mass fractionation of these samples when measured by MC-ICP-MS (Foster et al., 2008; Guerrot et al., 2010).

3.1.2 Accuracy and reproducibility

Throughout the duration of this study, a single dissolution of the diatom fraction of TC460 was measured 18 times in separate analyses at various concentrations, in order to assess ex-

ternal reproducibility of this method. Carbonates generally have a reproducibility of $\pm 0.20\%$ (2σ) at an analyte concentration of 50 ppb boron using the MC-ICP-MS methods at the University of Southampton (e.g. Chalk et al., 2017). The repeated measurements of TC460 gave a reproducibility of $\pm 0.28\%$ (2σ) over 18 samples, ranging from 19 to 61 ppb (11 to 34 ng) boron (Fig. 4). The insensitivity of $\delta^{11}\text{B}$ to the boron concentration analysed confirms that blank contamination during purification is not significant. Figure 4 shows that there is also no correlation between Al content of the boron fraction and measured $\delta^{11}\text{B}$, confirming that Al contamination does not influence mass fractionation.

Figure 4 shows the results of the standard addition experiment, and when the uncertainty in the $\delta^{11}\text{B}$ of the mixture is considered, it is clear that nearly all the mixtures lie within error of the 1 : 1 line, indicating that there is a lack of a significant matrix effect when analysing the $\delta^{11}\text{B}$ of biogenic silica as described herein. A linear-least-squares regression of the mixtures has a slope of 1.01 ± 0.07 and an intercept of $-0.15 \pm 0.29\%$, implying the approach is accurate to $\pm 0.29\%$, which is remarkably similar to the stated reproducibility of TC460 ($\pm 0.28\%$ at 2σ).

B and Si content were determined separately and combined post-analysis in order to estimate the B/Si ratio for each sample and hence the B concentration. The reproducibility of this method was tested using six repeats of the diatom fraction of TC460. The mean of all six measurements is 2.99 ± 0.64 ppm; (2σ ; Fig. 4), implying this multistage method of determining the B content of diatoms is precise to $\pm 20\%$ at 95 % confidence.

3.2 Diatom cultures

3.2.1 Boron content of the frustule of *T. weissflogii*

The boron content of *T. weissflogii* increases as a function of pH from around ~ 1 to ~ 4 ppm over a range of average culture pH from 7.5 to 8.6 (Fig. 5; Table 2). While this is lower by an order of magnitude than the limited previous studies of boron in sedimentary diatoms (Ishikawa and Nakamura, 1993), it is similar to boron concentration in the bulk diatom fraction of TC460 (Fig. 4d) and to that observed in previous culturing studies of this diatom species (Fig. 5; Mejía et al., 2013). In detail, however, our concentrations are around 2–3 times lower than Mejía et al. (2013), perhaps due to (i) the different analytical methods used (laser ablation ICP-MS vs. solution here), (ii) differences in cleaning methods and/or (iii) differences in culturing methodology. Despite the scatter between our treatments (also seen in Mejía et al., 2013; Fig. 5), a least-squares regression through the treatments is significant at the 95 % confidence level ($y = 2.15x - 15.56$, $R^2 = 0.46$, $p = 0.015$; Fig. 5). The cause of this scatter between treatments is not known but a likely contributor is the relatively high variability in the carbonate system which was

observed in each treatment due to the growth of the diatoms in our batch culture setup (Fig. 2).

Boron is an essential nutrient for diatoms (Lewin, 1966), and it is likely that boric acid passively diffuses across the cell wall to ensure the diatom cell has sufficient boron to meet its biological needs. However, if boric acid were the sole source of boron for the diatoms measured here, we might expect a decrease in boron content as pH increases and external dissolved boric acid concentration declines (Fig. 6).

Several studies note that a number of higher plants have mechanisms for also actively taking up boron, leading to large variations in internal boron concentrations (Pfeffer et al., 2001; Dordas and Brown, 2000; Brown et al., 2002). Indeed, on the basis of a similar dataset to that collected here, Mejía et al. (2013) suggested that borate is likely transported across the cell wall of *T. weissflogii* as some function of external borate concentration, which shows a positive relationship with external pH (Fig. 6). This hypothesis is developed and discussed further in the next section.

3.2.2 Frustule $\delta^{11}\text{B}$ of *T. weissflogii*

The $\delta^{11}\text{B}$ of *T. weissflogii* is isotopically light compared to seawater (39.6‰; Foster et al., 2010), with an average value across all treatments of -3.95% (Table 2). Despite the scatter between treatments, similar to the [B] data, Fig. 5 shows that there is a clear relationship between the $\delta^{11}\text{B}$ of the diatom frustule and pH ($R^2 = 0.46$, $p < 0.01$), albeit with a negative and relatively shallow slope ($y = -2.61x + 17.12$).

These results confirm that biogenic silica, free from clay contamination, has a very light boron isotopic composition (Ishikawa and Nakamura, 1993). However, the observed relationship between $\delta^{11}\text{B}$ in *T. weissflogii* and pH is radically different to that which is observed in carbonates (Fig. 5), implying a distinctive incorporation mechanism for boron into diatom opal. Much work has been carried out in recent years to show that boron is incorporated in carbonates predominantly as the borate ion with minor, if any, isotopic fractionation (e.g. see Branson, 2018 for a review). It is similarly thought that the borate ion is incorporated into opal in an analogous fashion to its incorporation into clays (Ishikawa and Nakamura, 1993; Kolodny and Chaussidon, 2004). However, such a mechanism in isolation would only be able to generate $\delta^{11}\text{B}$ in opal of $\sim 13\%$ (at the lowest pH). Given the preponderance of isotopically light diatoms, radiolaria and chert $\delta^{11}\text{B}$ in the literature (including this study; Kolodny and Chaussidon, 2004; Ishikawa and Nakamura, 1993), it is therefore likely that there is an additional light isotopic fractionation of boron on its incorporation into opal, although its absolute magnitude is currently unknown (Kolodny and Chaussidon, 2004).

To make their frustules out of biogenic silica, aqueous $\text{Si}(\text{OH})_4$ is taken up by the diatom cell via active transport by silicon transporter proteins (Amo and Brzezinski, 1999). Once $\text{Si}(\text{OH})_4$ has entered the cell, it accumulates in vac-

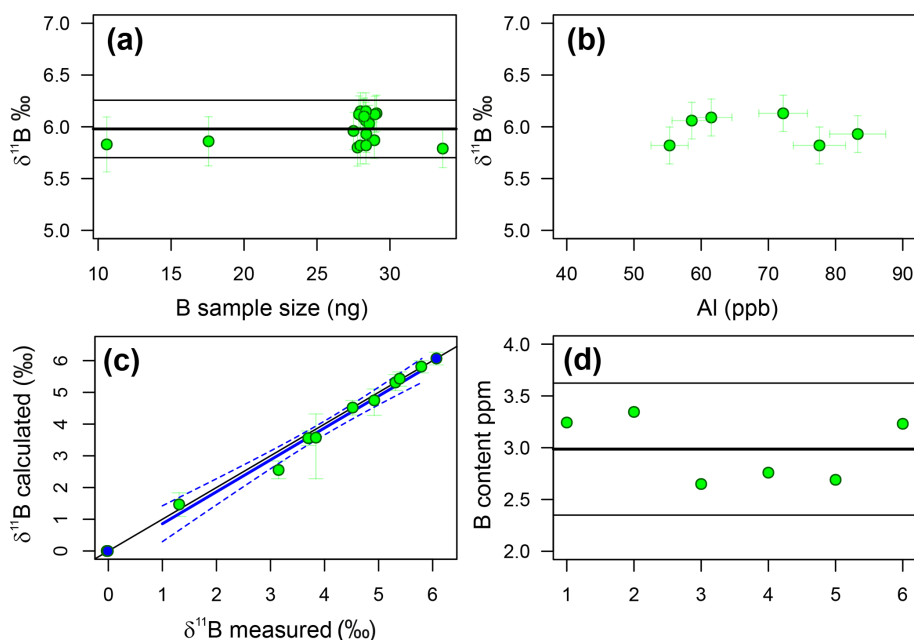


Figure 4. (a) The reproducibility of the TC460 diatom core catcher in-house standard. Samples of different concentration (~ 10 to ~ 30 ng B) lie within error of the mean ($5.98\text{‰} \pm 0.28\text{‰}$, 2σ). This compares well to carbonates ($2\sigma = 0.20\text{‰}$). (b) Aluminium concentration of the B fraction from TC460 (as ppb of the solution analysed for $\delta^{11}\text{B}$) shows no correlation with $\delta^{11}\text{B}$, likely suggesting there is no significant effect on mass fractionation for this level of Al. (c) The results of the standard addition experiment. The blue line is a least-squares regression between the measured $\delta^{11}\text{B}$ of each mixture (green circles) and the calculated $\delta^{11}\text{B}$ of that mixture given known endmember values (endmembers shown as blue circles). $R^2 = 0.97$, $p < 0.0001$, slope = 1.01 ± 0.07 and intercept = -0.15 ± 0.29 . The 1 : 1 line is shown as a black line, and dotted blue lines show the 95 % confidence limit of the regression. Note that the endmembers were not used in the regression. (d) B content in parts per million of six repeat samples of the diatom fraction of TC460. The black line indicates the mean value, and the grey lines show 2σ of 2.99 ± 0.64 ppm.

Table 2. Treatment name and pH with $\delta^{11}\text{B}$ and [B] for cultured *T. weissflogii*.

Treatment	pH (total scale)	pH 2σ	$\delta^{11}\text{B}$	$\delta^{11}\text{B}$ 2σ	$\delta^{11}\text{B}$ sw borate	[B] ppm
200	8.55	0.63	-5.51	0.21	24.20	3.15
200	8.54	0.62	-5.40	0.21	24.00	2.81
280	8.27	0.35	-5.05	0.20	20.00	3.72
280	8.18	0.25	-5.66	0.21	18.80	0.93
280	8.30	0.42	-5.79	0.21	20.50	1.04
400	8.26	0.38	-3.64	0.20	19.90	3.37
400	8.24	0.36	-3.57	0.21	19.60	1.26
400	8.25	0.36	-2.41	0.21	19.70	2.68
800	7.85	0.22	-2.93	0.19	15.40	NA
800	7.82	0.18	-2.80	0.22	15.20	0.78
800	7.82	0.20	-3.08	0.21	15.20	1.11
1600	7.48	0.06	-1.94	0.20	13.30	0.74
1600	7.48	0.07	-3.62	0.21	13.30	0.91

NA – not available.

uoles that tend to have a high pH in order to prevent polycondensation of $\text{Si}(\text{OH})_4$ at its higher concentration in the vacuole (Vrieling et al., 1999). The accumulated $\text{Si}(\text{OH})_4$ is then transported to the silicon deposition vesicle (SDV), which is an acidic compartment where the formation of biogenic silica

and the construction of the frustule occurs. Without knowledge of the isotopic fractionation of boron on incorporation into biogenic silica, the interpretation of our new $\delta^{11}\text{B}$ data is challenging. This difficulty is further increased given that the fluid in the SDV is unlikely to have the same $\delta^{11}\text{B}$ as exter-

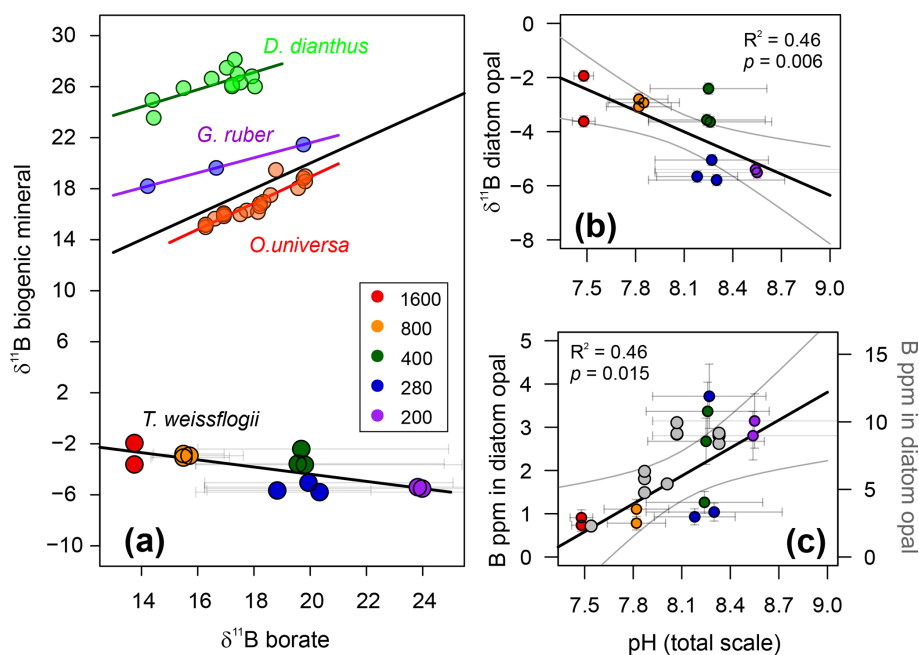


Figure 5. (a) $\delta^{11}\text{B}$ of *T. weissflogii* diatom opal plotted against aqueous borate, labelled according to $p\text{CO}_2$ treatment. Also shown are published deep-sea coral *Desmophyllum dianthus* (Anagnostou et al., 2012) and foraminifera $\delta^{11}\text{B}$ (*Globigerinoides ruber* and *Orbulina universa*; Henehan et al., 2013, 2016, respectively). Least-squares regression lines are also shown. Error bars on $\delta^{11}\text{B}$ borate are shown at the 95 % confidence level and relate to the drift in experimental conditions. (b) *T. weissflogii* opal $\delta^{11}\text{B}$ against pH of each treatment demonstrating a statistically significant negative relationship. Diatom data are labelled according to $p\text{CO}_2$ treatment. (c) Boron content of cultured *T. weissflogii* diatom opal as a function of pH (using the left y axis), labelled according to $p\text{CO}_2$. A least-squares regression with a 95 % confidence interval is also shown. In grey (and using the right y axis) are data for *T. weissflogii* from Mejía et al. (2013). Note how both studies show an increase in boron content with increasing pH, but absolute values differ by a factor of 2–3. Uncertainty in all points is shown at the 95 % confidence level. In some cases, the error bars are smaller than the symbols.

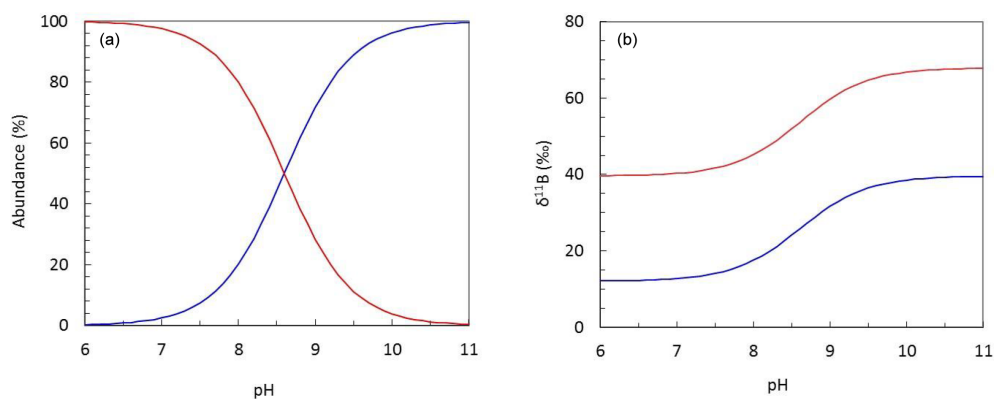


Figure 6. Plots describing (a) the pH-dependent relationship between the abundance of aqueous boron species and (b) the isotopic fractionation observed between boric acid (B(OH)_3 ; red) and borate (B(OH)_4^- ; blue) at $T = 25^\circ\text{C}$ and $S = 35$.

nal seawater, and its relatively acidic pH (~ 5.5 ; Mejía et al., 2013; Vrieling et al., 1999) is likely to promote polymerisation of Si(OH)_4 . Nonetheless, the broad similarity between the $\delta^{11}\text{B}$ of our cultured *T. weissflogii* with the bulk diatom fraction measured here from sample TC460 and the bulk diatom fraction and radiolarian skeleton measured by Ishikawa and Nakamura (1993; $\sim 3\text{‰}$) suggests that a large part of

the light isotopic composition of biogenic silica is driven by the isotopic fractionation on incorporation rather than “vital effects” relating to the $\delta^{11}\text{B}$ and pH of the SDV in the different species and organisms. That being said, the $> 3\text{‰}$ range between different pH treatments in *T. weissflogii* and the $> 10\text{‰}$ difference between our *Chaetoceros*-dominated bulk diatom fraction from TC460 and the cultured *T. weiss-*

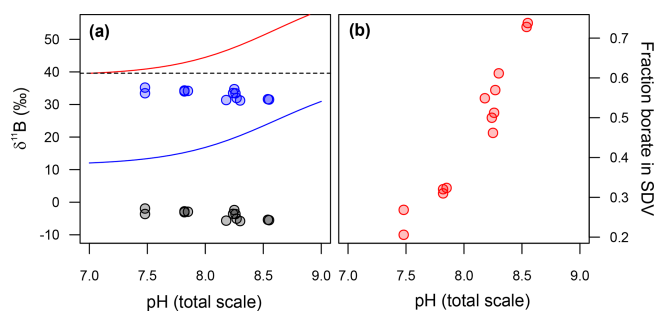


Figure 7. (a) Back-calculated $\delta^{11}\text{B}$ of the silica deposition vesicle (SDV), and (b) the fraction of boron in the SDV that is derived from external borate. In (a) the diatom $\delta^{11}\text{B}$ data are shown as grey circles and the calculated $\delta^{11}\text{B}$ of the SDV as blue circles. Included in this model is an arbitrary -10% fractionation between the $\delta^{11}\text{B}$ of the SDV and the opal precipitated. The fraction of borate in the SDV in (b) is a function of this assumption, so these absolute values should be taken as illustrative only.

flogii, as well as the negative relationship between pH and diatom $\delta^{11}\text{B}$ (Fig. 5), argue against a simple two-step model involving borate ion incorporation from seawater with a fixed isotopic fractionation.

The $\delta^{11}\text{B}$ of the fluid from which our *T. weissflogii* precipitated their frustules can be calculated if we assume the pH in the SDV of our *T. weissflogii* is 5.5 across all our treatments (Mejía et al., 2013). Given that at this pH the $\delta^{11}\text{B}$ of borate is $\sim 13\%$, the isotopic composition of this fluid is lighter than seawater, even if we assume an arbitrary -10% isotopic fractionation on incorporation (blue circles in Fig. 7a). Furthermore, the $\delta^{11}\text{B}$ of the SDV fluid is inversely correlated with the $\delta^{11}\text{B}$ of either dissolved borate or dissolved boric acid (Fig. 7a).

As discussed above and illustrated schematically in Fig. 8, Mejía et al. (2013) suggested that there are two sources of boron in a diatom cell: (i) passively diffused and isotopically heavy boric acid and (ii) actively transported isotopically light borate ion (see Fig. 8). Assuming that (a) no additional fractionation occurs during uptake and diffusion and (b) only the borate ion is incorporated into the frustule, we can calculate the relative contribution of these two sources of boron as a function of external pH (Fig. 7b). This treatment shows that the relative concentration of borate-derived boron in the SDV fluid increases as external pH increases, though the absolute values here are a function of the magnitude of the isotopic fractionation on incorporation, so we only have confidence in the trends shown in Fig. 7b. Nonetheless, given that the dissolved boric acid concentration decreases and dissolved borate increases as pH is increased (Fig. 6), this is perhaps not surprising.

While this finding is entirely compatible with the trend of increasing boron content of *T. weissflogii* observed as pH increases (Fig. 5), an added complication is that at $\text{pH} \sim 5.5$ the concentration of borate ion in the SDV is likely to be relatively low (Fig. 6). However, the timescales required to reach equilibrium in the boron system are short (e.g. around $95 \mu\text{s}$; Zeebe et al., 2001), meaning that any aqueous borate incorporated into the frustule would be immediately replenished to its equilibrium value by conversion from the more abundant boric acid. Although relevant partition coefficients are likely to be different, a similar process ensures the quantitative removal of boron from $\text{pH} < 7$ solutions by the Amberlite 743 anion exchange resin used for boron purification prior to analysis by MC-ICP-MS (see above; Lemarchand et al., 2002).

Active bicarbonate ion uptake accounts for a substantial amount of the carbon fixed by phytoplankton (e.g. Tortell et al., 2006). As a result, Mejía et al. (2013) proposed that the enrichment of borate ion into the SDV of *T. weissflogii* and *T. pseudonana* was the result of the active co-transport of borate ion with bicarbonate ion by bicarbonate transporter proteins. Borate is transported because of its similar charge and size to HCO_3^- and the phylogenetic similarity between bicarbonate and borate transporters (Mejía et al., 2013). In our model, as external borate ion concentration increases, the borate leak into the diatom cell is also increased. An additional factor is HCO_3^- transport, which may be proportionally up-regulated as external CO_2 content decreases (and external pH increases) in order to provide the diatom cell with sufficient carbon (Mejía et al., 2013). This may therefore offer a way of driving an elevation of the borate content of the SDV as pH increases (Mejía et al., 2013). Regardless of the exact mechanism, an SDV fluid with an inverse relationship between $\delta^{11}\text{B}$ and pH is required to explain the $\delta^{11}\text{B}$ of the *T. weissflogii* frustule measured here. A simple model whereby external borate ion is an increasingly important contributor to the boron in the SDV as pH increases is able to explain the observed dependency of boron content and $\delta^{11}\text{B}$ on pH. However, a more complete model of the boron systematics in diatom opal requires a better understanding of isotopic fractionation on incorporation of boron into biogenic silica, the environmental controls on this fractionation, and the nature of the partitioning of boron within the diatom cell and into biogenic silica.

3.2.3 Boron-based pH proxies in diatom opal

The $\delta^{11}\text{B}$ –pH and B–pH relationships derived here for *T. weissflogii* potentially offer two independent means to reconstruct the past pH of seawater, particularly in those regions key for CO_2 and heat exchange where foraminifera are largely absent (e.g. at high latitudes). However, the current calibrations (Fig. 5) are relatively uncertain, which may preclude their application to some situations. For instance, recasting the $\delta^{11}\text{B}$ –pH relationship in terms of $\delta^{11}\text{B}$ as the

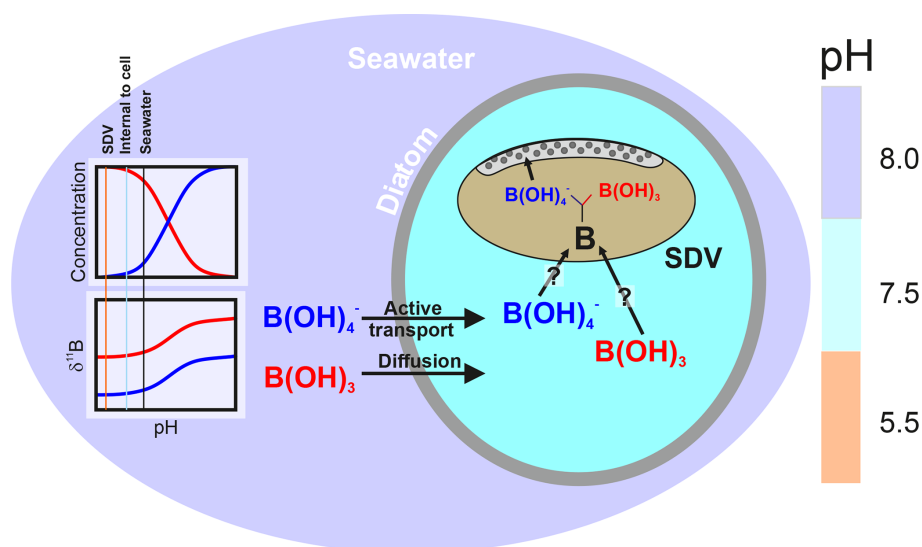


Figure 8. Schematic of the model described herein for boron uptake by *T. weissflogii*. The speciation behaviour and isotopic composition of boron is also shown in the insert, with the aqueous species colour coded (red represents boric acid, and blue represents borate ion). Seawater boric acid diffuses into the diatom cell, and the borate ion is actively transported, with HCO_3^- . While it remains unclear how boron enters the silica deposition vesicle, once inside it respeciates into borate ion and boric acid, with the borate ion being incorporated into the frustule. The isotopic composition of internal boron is a function of external pH, which sets the isotopic composition of the incoming species, as well as the balance between active borate ion transport and passive boric acid diffusion. The compartments are colour coded according to approximate pH (scale on the right).

dependent variable and using a regression method that accounts for uncertainty in X and Y variables (SIMEX; Carroll et al., 1996) gives the calculated residual pH of the regression as ± 0.28 pH units. For the $[\text{B}]$ vs. pH relationship, this uncertainty is ± 0.36 pH units. At typical surface ocean conditions, such a variability in pH would translate to seawater $p\text{CO}_2$ variability of up to ca. ± 250 ppm. Although encouraging, this treatment suggests that additional work is needed before the relationship between $\delta^{11}\text{B}$ and boron content of diatom opal and seawater pH is a sufficiently precise proxy for a fully quantitative past ocean pH. In particular, future culturing efforts should aim to more carefully control the pH of the culture media. This could be achieved by either using larger volume dilute batch cultures, by harvesting the diatoms earlier in the experiment prior to any significant drift in the carbonate system and/or by using a more robust steady-state chemostat method (e.g. Leonardos and Geider, 2005).

4 Conclusions

In the first study of its kind, we use a modified version of the carbonate boron purification technique of Foster (2008) to show that the $\delta^{11}\text{B}$ of *T. weissflogii* opal is pH sensitive but isotopically light (-3.95% on average) and has an inverse relationship with external seawater pH. Using a novel ICP-MS method we also show that the boron content of *T. weissflogii* opal increases with increasing pH, supporting the only other study investigating boron in diatoms (Mejía et al.,

2013). This suggests that more borate is incorporated into the diatom frustule as the dissolved borate abundance increases with external pH. A simple model is presented, based on Mejía et al. (2013), which implies both of these findings could be due to there being two distinct sources of the boron in the SDV: external boric acid and external borate ion, with the balance of each source changing with external pH. While these results are encouraging, suggesting that the boron proxies in diatom opal may hold considerable promise as a tracer of past ocean pH, more work is needed to fully understand the boron systematics of diatom opal. In particular, there is an urgent need to place boron in opal on firmer ground with precipitation experiments in the laboratory at controlled pH to determine the magnitude of boron isotopic fractionation on boron incorporation into opal as well as the dependence of this fractionation on other environmental factors.

Data availability. The data generated in this study are tabulated herein. For any additional data please contact the corresponding author.

Author contributions. GLF, HKD, AJP and CMM conceived and designed the study, and it was carried by HKD and NF (aided by AJP, CMM and GLF). GEAS aided HKD in sample preparation, and MPH carried out the carbonate system measurements of the culture media. GLF and HKD produced the first draft and all authors contributed to the writing of the study.

Competing interests. The authors declare that they have no conflict of interest.

Acknowledgements. We wish to thank Claus-Dieter Hillenbrand for supplying the diatom-rich sediment sample TC460. John Gittins, Mark Stinchcombe, Chris Daniels and Lucie Daniels are acknowledged for their help during the culturing and subsequent nutrient and carbonate system analysis. Heather Stoll is also thanked for her useful discussions on this topic.

Financial support. This research has been supported by the Natural Environmental Research Council (NERC, UK) (grant nos. 1362080 and NE/J021075/1).

Review statement. This paper was edited by Aldo Shemesh and reviewed by Jan Fietzke and Joji Uchikawa.

References

- Amo, Y. D. and Brzezinski, M. A.: The chemical form of dissolved Si taken up by marine diatoms, *J. Phycol.*, 35, 1162–1170, <https://doi.org/10.1046/j.1529-8817.1999.3561162.x>, 1999.
- Anagnostou, E., Huang, K.-F., You, C.-F., Sikes, E. L., and Sherrell, R. M.: Evaluation of boron isotope ratio as a pH proxy in the deep sea coral *Desmophyllum dianthus*: Evidence of physiological pH adjustment, *Earth Planet. Sc. Lett.*, 349–350, 251–260, <https://doi.org/10.1016/j.epsl.2012.07.006>, 2012.
- Branson, O.: Boron Incorporation into Marine CaCO₃, in: *Boron Isotopes: The Fifth Element*, edited by: Marschall, H. and Foster, G., Springer International Publishing, Cham, 71–105, 2018.
- Brown, P. H., Bellaloui, N., Wimmer, M. A., Bassil, E. S., Ruiz, J., Hu, H., Pfeiffer, H., Dannel, F., and Romheld, V.: Boron in plant biology, *Plant Biol.*, 4, 205–223, 2002.
- Carroll, R. L., Kuchenhoff, H., Lombard, F., and Stefanski, L. A.: Asymptotics for the SIMEX Estimator in Nonlinear Measurement Error Models, *J. Am. Stat. Assoc.*, 91, 242–250, 1996.
- Chalk, T. B., Hain, M. P., Foster, G. L., Rohling, E. J., Sexton, P. F., Badger, M. P. S., Cherry, S. G., Hasenfratz, A. P., Haug, G. H., Jaccard, S. L., Martínez-García, A., Pälike, H., Pancost, R. D., and Wilson, P. A.: Causes of ice age intensification across the Mid-Pleistocene Transition, *P. Natl. Acad. Sci. USA*, 114, 13114–13119, <https://doi.org/10.1073/pnas.1702143114>, 2017.
- Dickson, A. G.: Thermodynamics of the dissociation of boric acid in synthetic seawater from 273.15 to 318.15 K, *Deep-Sea Res. Pt. A*, 37, 755–766, [https://doi.org/10.1016/0198-0149\(90\)90004-F](https://doi.org/10.1016/0198-0149(90)90004-F), 1990.
- Dickson, A. G., Sabine, C. L., and Christian, J. R. (Eds.): SOP 1: Water sampling for the parameters of the oceanic carbon dioxide system, in *Guide to Best Practices for Ocean CO₂ Measurements*, PICES Special Publication 3, chap. 4, North Pacific Marine Science Organization, Sidney, BC, Canada, 2007.
- Dordas, C. and Brown, P. H.: Permeability of boric acid across lipid bilayers and factors affecting it, *J. Membrane Biol.*, 175, 95–105, 2000.
- Foster, G. L.: Seawater pH, pCO₂ and [CO₃²⁻] variations in the Caribbean Sea over the last 130 kyr: A boron isotope and B/Ca study of planktic foraminifera, *Earth Planet. Sc. Lett.*, 271, 254–266, 2008.
- Foster, G. L., Pogge von Strandmann, P. A. E., and Rae, J. W. B.: Boron and magnesium isotopic composition of seawater, *Geochem. Geophys. Geosys.*, 11, Q08015, <https://doi.org/10.1029/2010GC003201>, 2010.
- Gray, W. R., Rae, J. W. B., Wills, R. C. J., Shevenell, A. E., Taylor, B., Burke, A., Foster, G. L., and Lear, C. H.: Deglacial upwelling, productivity and CO₂ outgassing in the North Pacific Ocean, *Nat. Geosci.*, 11, 340–344, <https://doi.org/10.1038/s41561-018-0108-6>, 2018.
- Guerrot, C., Milot, R., Robert, M., and Negrel, P.: Accurate and high-precision determination of boron isotopic ratios at low concentration by MC-ICP-MS (Neptune), *Geostandards and Geoanalytical Research*, 35, 275–284, 2010.
- Hasle, G. R. and Fryxell, G. A.: The genus *Thalassiosira*: some species with a linear areola array, in: *Proceedings of the Fourth Symposium on Recent and Fossil Marine Diatoms*, Oslo, 1976, edited by: Simonsen, R., *Beihefte zur Nova Hedwigia* 54, 15–66, 1977.
- Hemming, N. G. and Hanson, G. N.: Boron isotopic composition and concentration in modern marine carbonates, *Geochim. Cosmochim. Ac.*, 56, 537–543, 1992.
- Hendry, K. R. and Andersen, M. B.: The zinc isotopic composition of siliceous marine sponges: Investigating nature's sediment traps, *Chem. Geol.*, 354, 33–41, 2013.
- Henehan, M. J., Rae, J. W. B., Foster, G. L., Erez, J., Prentice, K. C., Kurcera, M., Bostock, H. C., Martínez-Boti, M. A., Milton, J. A., Wilson, P. A., Marshall, B., and Elliott, T.: Calibration of the boron isotope proxy in the planktonic foraminifera *Globigerinoides ruber* for use in palaeo-CO₂ reconstruction, *Earth Planet. Sc. Lett.*, 364, 111–122, <https://doi.org/10.1016/j.epsl.2012.12.029>, 2013.
- Henehan, M. J., Foster, G. L., Bostock, H. C., Greenop, R., Marshall, B., and Wilson, P. A.: A new boron isotope-pH calibration for *Orbulina universa*, with implications for understanding and accounting for vital effects, *Earth Planet. Sc. Lett.*, 454, 282–292, <https://doi.org/10.1016/j.epsl.2016.09.024>, 2016.
- Hönisch, B. and Hemming, N. G.: Surface ocean pH response to variations in pCO₂ through two full glacial cycles, *Earth Planet. Sc. Lett.*, 236, 305–314, 2005. Hönisch, B., Hemming, G., Archer, D., Siddal, M., and McManus, J.: Atmospheric carbon dioxide concentration across the Mid-Pleistocene Transition, *Science*, 324, 1551–1554, 2009.
- Horn, M. G., Robinson, R. S., Rynearson, T., and Sigman, D. M.: Nitrogen isotopic relationship between diatom-bound and bulk organic matter of cultured polar diatoms, *Paleoceanography*, 26, 1–12, 2011.
- Ishikawa, T. and Nakamura, E.: Boron isotope systematics of marine sediments, *Earth Planet. Sc. Lett.*, 117, 567–580, 1993.
- Keller, M. D., Selvin, R. C., Claus, W., and Guillard, R. R. L.: Media for the culture of oceanic ultraplankton, *J. Phycol.*, 23, 633–638, 1987.
- Kolodny, Y. and Chaussidon, M.: Boron isotopes in DSDP cherts: Fractionation and diagenesis, *Geol. Soc. S. P.*, 9, 1–14, 2004.
- Koning, E., Gehlen, M., Flank, A.-M., Calas, G., and Epping, E.: Rapid post-mortem incorporation of alu-

- minium in diatom frustules: evidence from chemical and structural analyses, *Mar. Chem.*, 106, 208–222, <https://doi.org/10.1016/j.marchem.2006.06.009>, 2007.
- Lee, K., Kim, T.-W., Byrne, R. H., Millero, F. J., Feely, R. A., and Liu, Y.-M.: The universal ratio of boron to chlorinity for the North Pacific and North Atlantic oceans, *Geochim. Cosmochim. Ac.*, 74, 1801–1811, <https://doi.org/10.1016/j.gca.2009.12.027>, 2010.
- Lemarchand, D., Gaillardet, J., Gopel, C., and Manhes, G.: An optimized procedure for boron separation and mass spectrometry analysis for river samples, *Chem. Geol.*, 182, 323–334, 2002.
- Leonardos, N. and Geider, R. J.: Elevated atmospheric carbon dioxide increases organic carbon fixation by *Emiliania huxleyi* (haptophyta), under nutrient-limited high-light conditions, *J. Phycol.*, 41, 1196–1203, <https://doi.org/10.1111/j.1529-8817.2005.00152.x>, 2005.
- Lewin, J.: Boron as a growth requirement for diatoms, *J. Phycol.*, 2, 160–163, <https://doi.org/10.1111/j.1529-8817.1966.tb04616.x>, 1966.
- Lueker, T. J., Dickson, A. G., and Keeling, C. D.: Ocean $p\text{CO}_2$ calculated from dissolved inorganic carbon, alkalinity, and equations for K_1 and K_2 : validation based on laboratory measurements of CO_2 gas and seawater at equilibrium, *Mar. Chem.*, 70, 105–119, [https://doi.org/10.1016/S0304-4203\(00\)00022-0](https://doi.org/10.1016/S0304-4203(00)00022-0), 2000.
- Martin, J.: Glacial-interglacial CO_2 change: The iron hypothesis, *Paleoceanography*, 5, 1–13, 1990.
- Martínez-Botí, M. A., Marino, G., Foster, G. L., Ziveri, P., Henahan, M. J., Rae, J. W. B., Mortyn, P. G., and Vance, D.: Boron isotope evidence for oceanic carbon dioxide leakage during the last deglaciation, *Nature*, 518, 219–222, <https://doi.org/10.1038/nature14155>, 2015.
- Mejía, L. M., Isensee, K., Menendez-Vicente, A., Pisonero, J., Shimizu, N., Gonzalez, C., Monteleone, B. D., and Stoll, H.: B content and Si/C ratios from cultured diatoms (*Thalassiosira pseudonana* and *Thalassiosira weissflogii*): Relationship to seawater pH and diatom carbon acquisition, *Geochim. Cosmochim. Ac.*, 123, 322–337, <https://doi.org/10.1016/j.gca.2013.06.011>, 2013.
- Ni, Y., Foster, G. L., and Elliott, T.: The accuracy of $\delta^{11}\text{B}$ measurements of foraminifers, *Chem. Geol.*, 274, 187–195, 2010.
- Pearson, P. N. and Palmer, M. R.: Atmospheric carbon dioxide concentrations over the past 60 million years, *Nature*, 406, 695–699, 2000.
- Pfeffer, H., Daniel, F., and Romheld, V.: Boron compartmentation in roots of sunflower plants of different boron status: A study using the stable isotopes ^{10}B and ^{11}B adopting two independent approaches, *Physiol. Plant.*, 113, 346–351, 2001.
- Rae, J. W. B., Foster, G. L., Schmidt, D. N., and Elliott, T.: Boron isotopes and B/Ca in benthic foraminifera: proxies for the deep ocean carbonate system, *Earth Planet. Sc. Lett.*, 302, 403–413, 2011.
- R Core Team: R: A language and environment for statistical computing, R Foundation for Statistical Computing, Vienna, Austria, available at: <https://www.R-project.org/> (last access: 24 March 2020), 2018.
- Sigman, D. M. and Boyle, E. A.: Glacial/Interglacial variations in atmospheric carbon dioxide, *Nature*, 407, 859–869, 2000.
- Sigman, D. M., Hain, M. P., and Haug, G. H.: The polar ocean and glacial cycles in atmospheric CO_2 concentration, *Nature*, 466, 47–55, <https://doi.org/10.1038/nature09149>, 2010.
- Sosdian, S. M., Greenop, R., Hain, M. P., Foster, G. L., Pearson, P. N., and Lear, C. H.: Constraining the evolution of Neogene ocean carbonate chemistry using the boron isotope pH proxy, *Earth Planet. Sc. Lett.*, 248, 362–376, <https://doi.org/10.1016/j.epsl.2018.06.017>, 2018.
- Swann, G. E. A., Pike, J., Snelling, A. M., Leng, M. J., and Williams, M. C.: Seasonally resolved diatom $\delta^{18}\text{O}$ records from the West Antarctic Peninsula over the last deglaciation, *Earth Planet. Sc. Lett.*, 364, 12–23, <https://doi.org/10.1016/j.epsl.2012.12.016>, 2013.
- Tipper, E. T., Galy, A., and Bickle, M.: Calcium and magnesium isotope systematics in rivers draining the Himalaya-Tibetan-Plateau region: Lithological or fractionation control?, *Geochim. Cosmochim. Ac.*, 72, 1057–1075, 2008.
- Tortell, P. D., Martin, C. L., and Corkum, M. E.: Inorganic carbon uptake and intracellular assimilation by subarctic Pacific phytoplankton assemblages, *Limnol. Oceanogr.*, 51, 2102–2110, <https://doi.org/10.4319/lo.2006.51.5.2102>, 2006.
- van Heuven, S., Pierrot, D., Rae, J. W. B., Lewis, E., and Wallace, D. W. R.: MATLAB Program Developed for CO_2 System Calculations, Carbon Dioxide Information Analysis Center, Oak Ridge National Laboratory, U.S. Department of Energy, Oak Ridge, Tennessee, USA, https://doi.org/10.3334/CDIAC/otg.CO2SYS_MATLAB_v1.1, 2011.
- Vogl, J. and Rosner, M.: Production and certification of a unique set of isotope and delta reference materials for boron isotope determination in geochemical, environmental and industrial materials, *Geostandards and Geoanalytical Research*, 36, 161–175, 2012.
- Vrieling, E. G., Gieskes, W. W. C., and Beelen, T. P. M.: Silicon deposition in diatoms: control by pH inside the silicon deposition vesicle, *J. Phycol.*, 35, 548–559, <https://doi.org/10.1046/j.1529-8817.1999.3530548.x>, 1999.
- Zeebe, R. E., Sanyal, A., Ortiz, J. D., and Wolf-Gladrow, D. A.: A theoretical study of the kinetics of the boric acid-borate equilibrium in seawater, *Mar. Chem.*, 73, 113–124, 2001.