

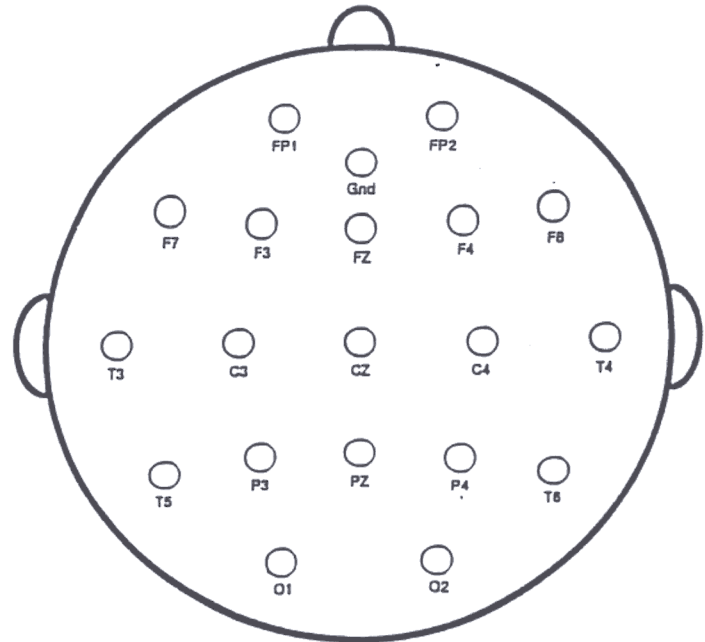


Electro-Cap International, Inc.

CUSTOM ELECTRO-CAPS

Your connection to the future!!

1. This diagram indicates the standard Electro-Cap positions. Draw a small circle on the diagram where you wish to have special electrodes installed on your Custom Cap. Label each position. Draw an "X" through any standard positions you wish to have deleted.
2. Provide a description of each of the special electrode positions. Please be precise, there are no refunds or exchanges on Custom Caps.
3. Refer to the options below, and choose any that you wish to be incorporated in your custom design. In any event, indicate your preference for the wiring of the cap.



MOUNT SIZE:

- Standard (16mm OD, 6mm ID)
- Small (11mm OD, 5mm ID)
(recommended for caps with 80 or more electrodes)

CABLE LENGTH:

- 3' (standard)
- Other (please specify)

IN ADDITION TO THE 7 STANDARD SIZES AVAILABLE, THE FOLLOWING CUSTOM SIZES ARE AVAILABLE:

- Med/Lg (56-60cm)
- Med/Sm (52-56cm)
- Sm/Ex Small (48-52cm)
- Ex Small/Infa I (44-48cm)
- Infa I/Infa II (40-44cm)
- Infa II/Infa III (36-40cm)
- Other (please specify)

CAP STYLE:

- Standard Cut
- Surgical
- High Cut
- Low Cut Front
- Low Cut Back

ELECTRODE METAL:

- Tin (standard)
- Gold plated silver
- Silver
- Silver/Silver Chloride

DROPPED WIRES:

- Detachable Electrodes
- Non-Detachable Electrodes

ELECTRODES FOR DROPPED

- WIRES:**
- 9mm Disk 6mm Disk
 - Bio-Potent. Ear Clip
 - Other (please specify)

CONNECTOR SIZE:

- 15 pin M F
- 25 pin M F
- 37 pin M F
- 50 pin M F

EAR SLITS:

- Yes

NON-MAGNETIC:

- Yes

OUTSIDE WIRES:

- Yes

ELECTRODE BOARD

ADAPTERS:

- Yes