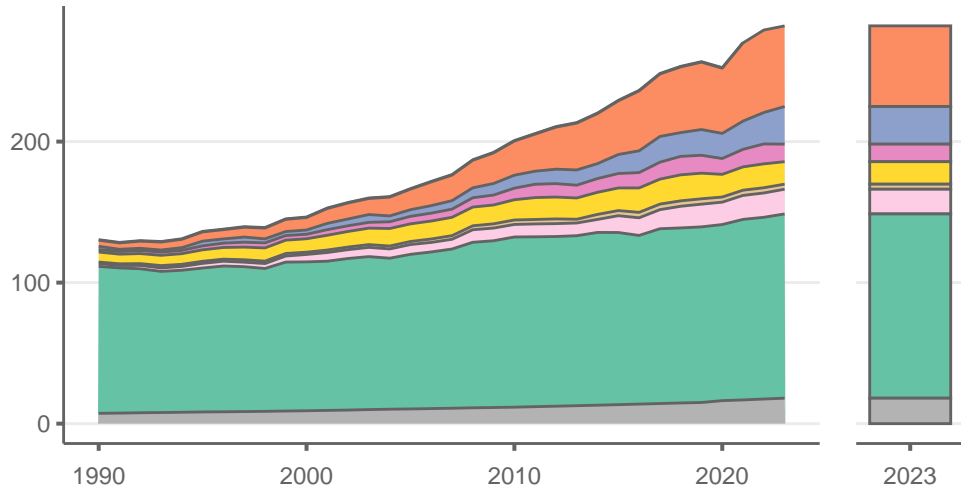
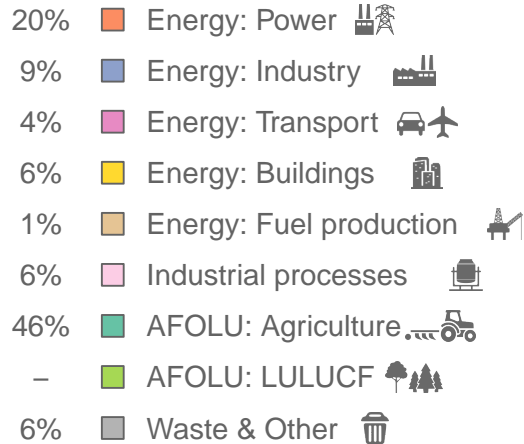


# Bangladesh

Greenhouse gas emissions (MtCO<sub>2</sub>e/year)



Sectors & shares of gross emissions in 2023



Bangladesh released an estimated 282 MtCO<sub>2</sub>e in 2023 (excl. LULUCF), a change of +1.1 % compared to the previous year. Per capita GHG emissions were 1.6 tCO<sub>2</sub>e in 2023. Cumulative CO<sub>2</sub> emissions since 1850 were 4.22 GtCO<sub>2</sub>, or about 0% of global emissions to date. Sources: EDGAR v9, GCB 2023, UNFCCC, Grassi et al. 2021