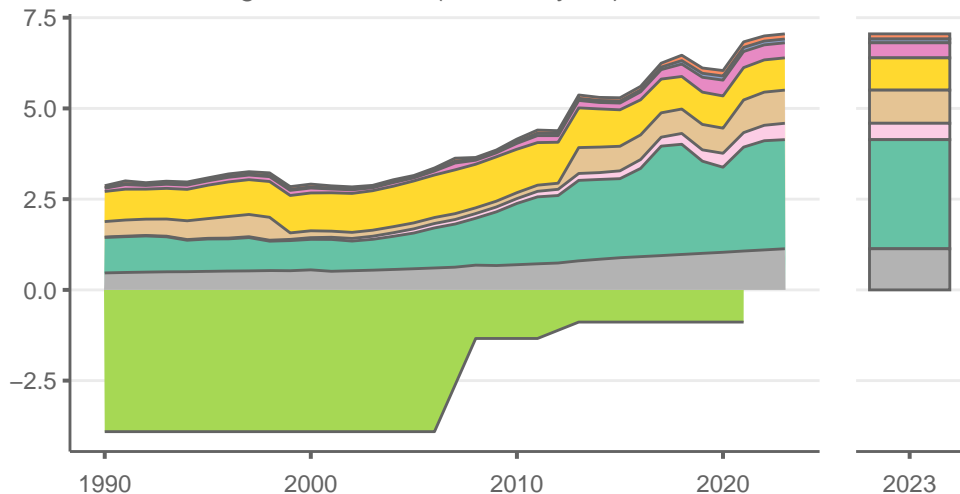
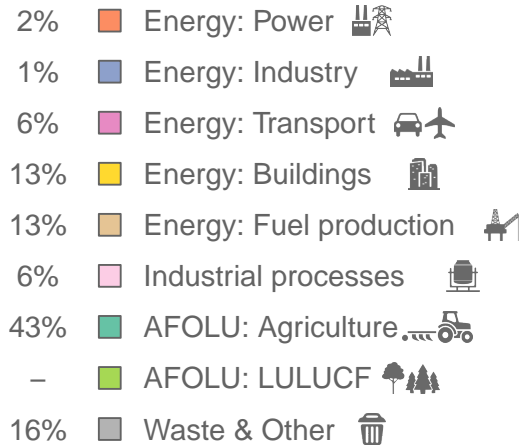


Burundi

Greenhouse gas emissions (MtCO₂e/year)



Sectors & shares of gross emissions in 2023



Burundi released an estimated 7.05 MtCO₂e in 2023 (excl. LULUCF), a change of +0.8 % compared to the previous year. Per capita GHG emissions were 0.53 tCO₂e in 2023. Cumulative CO₂ emissions since 1850 were 0.694 GtCO₂, or about 0% of global emissions to date. Sources: EDGAR v9, GCB 2023, UNFCCC, Grassi et al. 2021