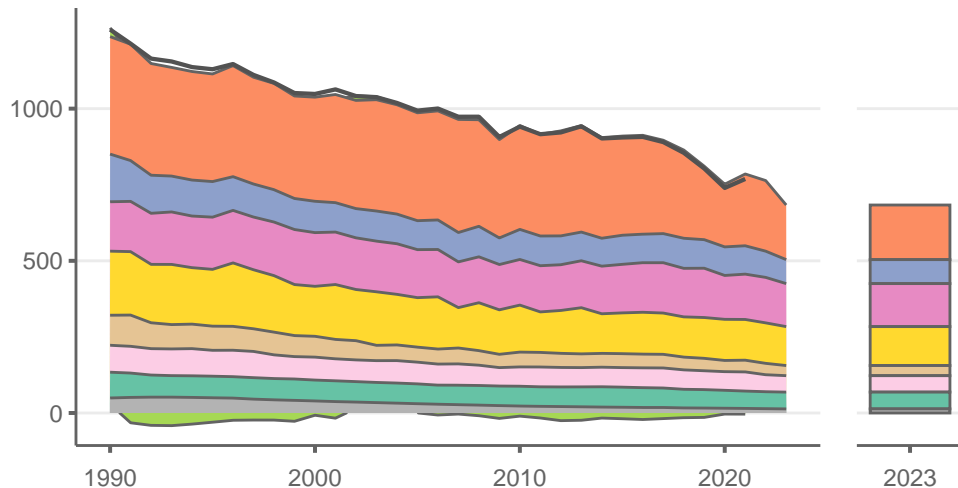
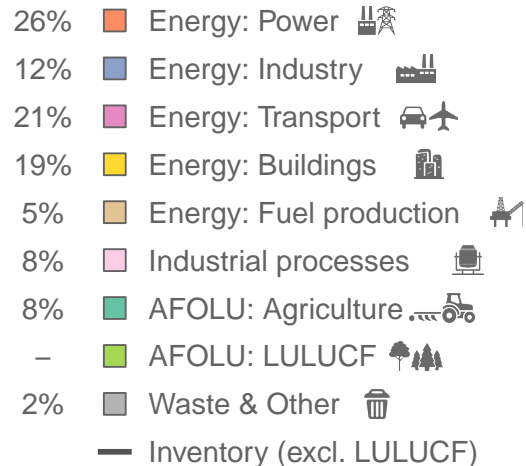


Germany

Greenhouse gas emissions (MtCO₂e/year)



Sectors & shares of gross emissions in 2023



Germany released an estimated 683 MtCO₂e in 2023 (excl. LULUCF), a change of -10.5 % compared to the previous year. Per capita GHG emissions were 8.1 tCO₂e in 2023. Cumulative CO₂ emissions since 1850 were 92.1 GtCO₂, or about 4% of global emissions to date. Sources: EDGAR v9, GCB 2023, UNFCCC, Grassi et al. 2021