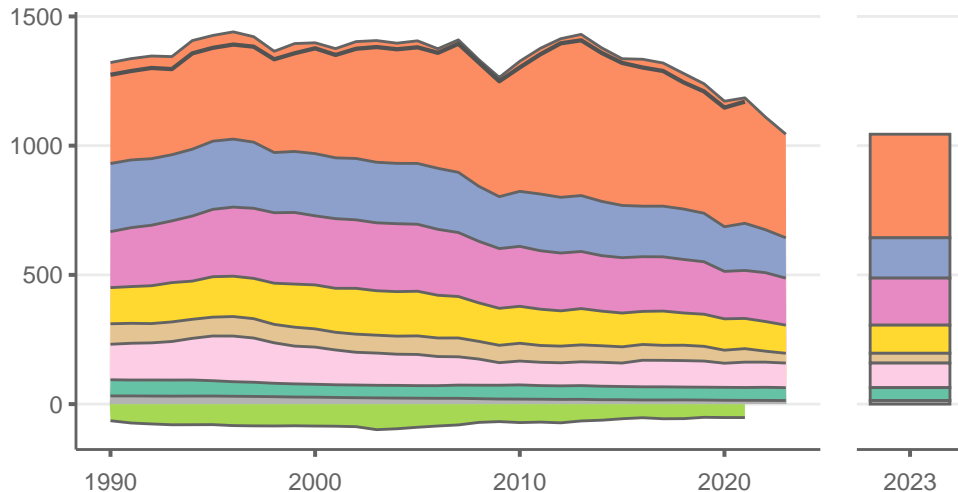
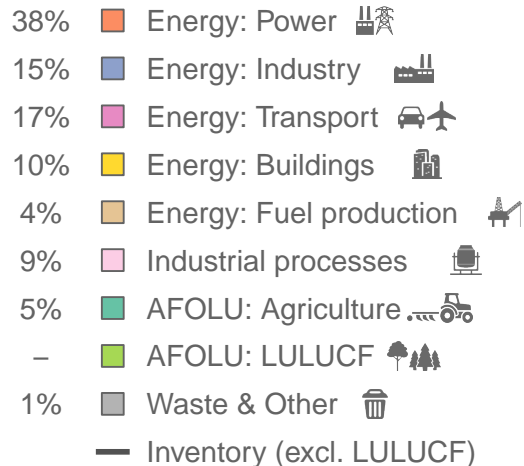


Japan

Greenhouse gas emissions (MtCO₂e/year)



Sectors & shares of gross emissions in 2023



Japan released an estimated 1040 MtCO₂e in 2023 (excl. LULUCF), a change of -6 % compared to the previous year. Per capita GHG emissions were 8.4 tCO₂e in 2023. Cumulative CO₂ emissions since 1850 were 71 GtCO₂, or about 3% of global emissions to date. Sources: EDGAR v9, GCB 2023, UNFCCC, Grassi et al. 2021