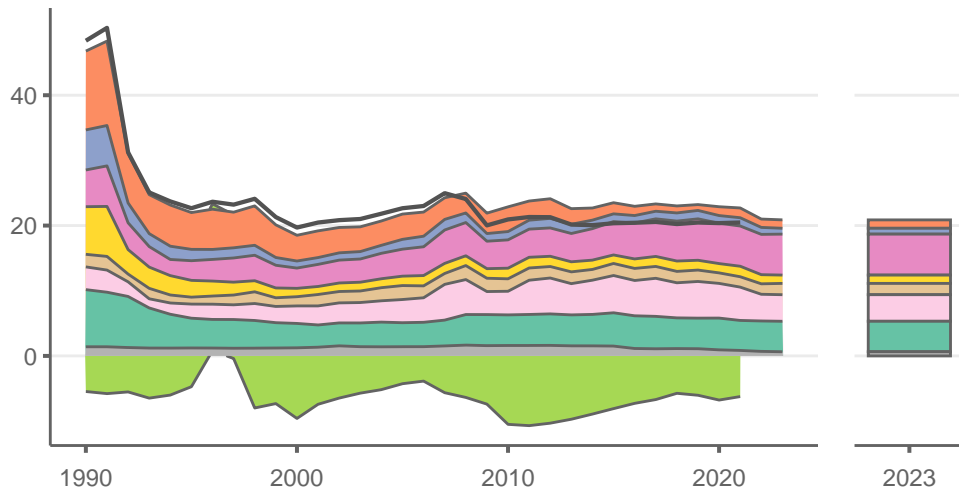
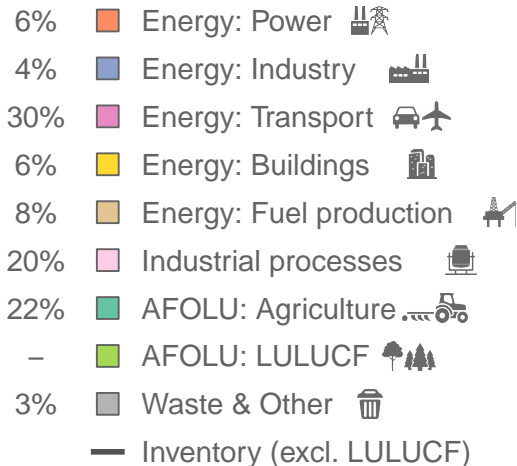


Lithuania

Greenhouse gas emissions (MtCO₂e/year)



Sectors & shares of gross emissions in 2023



Lithuania released an estimated 20.9 MtCO₂e in 2023 (excl. LULUCF), a change of -0.6 % compared to the previous year. Per capita GHG emissions were 7.3 tCO₂e in 2023. Cumulative CO₂ emissions since 1850 were 3.06 GtCO₂, or about 0% of global emissions to date. Sources: EDGAR v9, GCB 2023, UNFCCC, Grassi et al. 2021