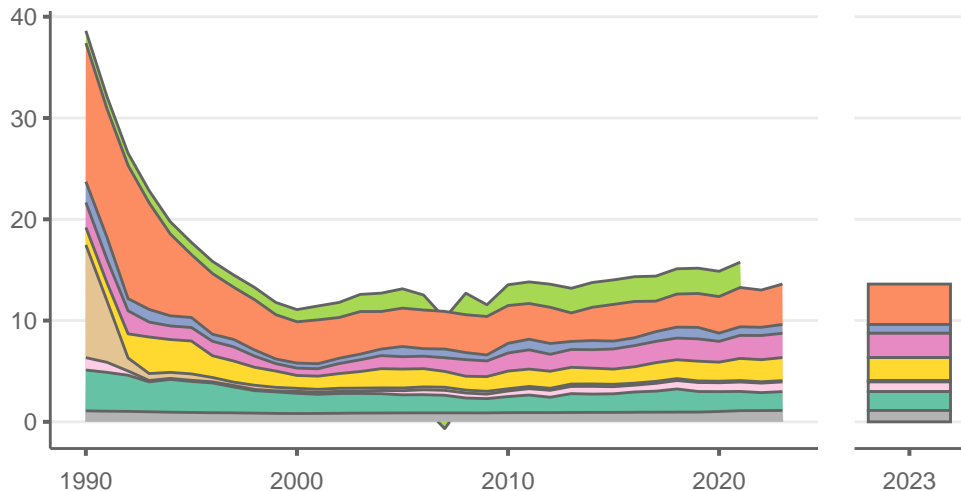
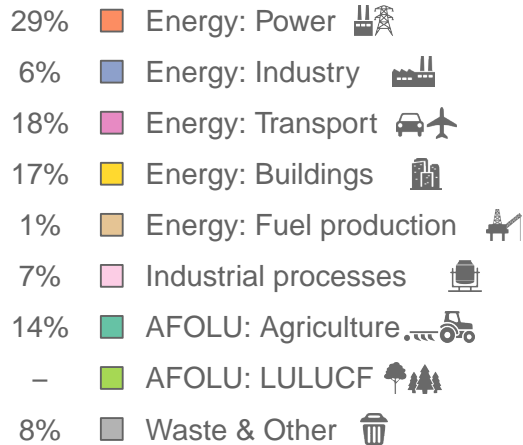


# Moldova

Greenhouse gas emissions (MtCO<sub>2</sub>e/year)



## Sectors & shares of gross emissions in 2023



Moldova released an estimated 13.6 MtCO<sub>2</sub>e in 2023 (excl. LULUCF), a change of +4.5 % compared to the previous year. Per capita GHG emissions were 5.5 tCO<sub>2</sub>e in 2023. Cumulative CO<sub>2</sub> emissions since 1850 were 1.81 GtCO<sub>2</sub>, or about 0% of global emissions to date. Sources: EDGAR v9, GCB 2023, UNFCCC, Grassi et al. 2021