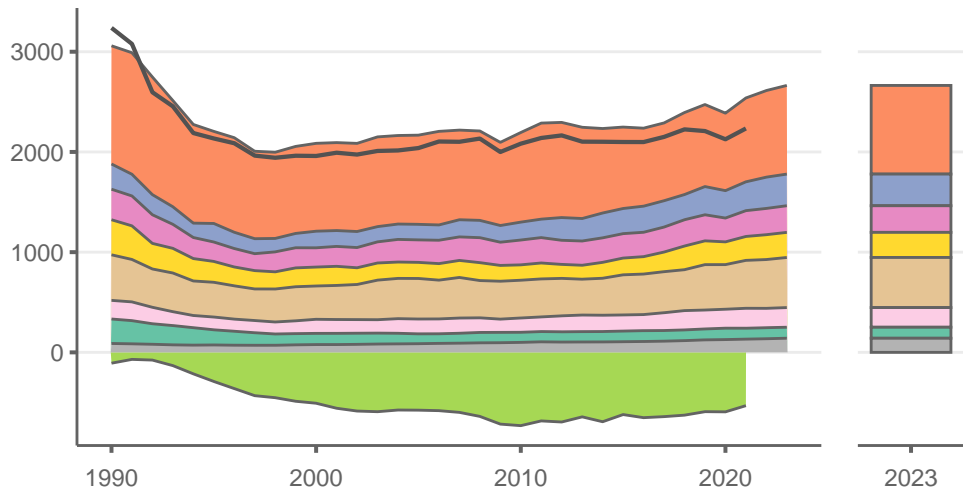


Russia

Greenhouse gas emissions (MtCO₂e/year)



Sectors & shares of gross emissions in 2023

- 33% Energy: Power
- 12% Energy: Industry
- 10% Energy: Transport
- 9% Energy: Buildings
- 19% Energy: Fuel production
- 7% Industrial processes
- 4% AFOLU: Agriculture
- AFOLU: LULUCF
- 5% Waste & Other
- Inventory (excl. LULUCF)

Russia released an estimated 2660 MtCO₂e in 2023 (excl. LULUCF), a change of +2 % compared to the previous year. Per capita GHG emissions were 19 tCO₂e in 2023. Cumulative CO₂ emissions since 1850 were 180 GtCO₂, or about 7% of global emissions to date. Sources: EDGAR v9, GCB 2023, UNFCCC, Grassi et al. 2021