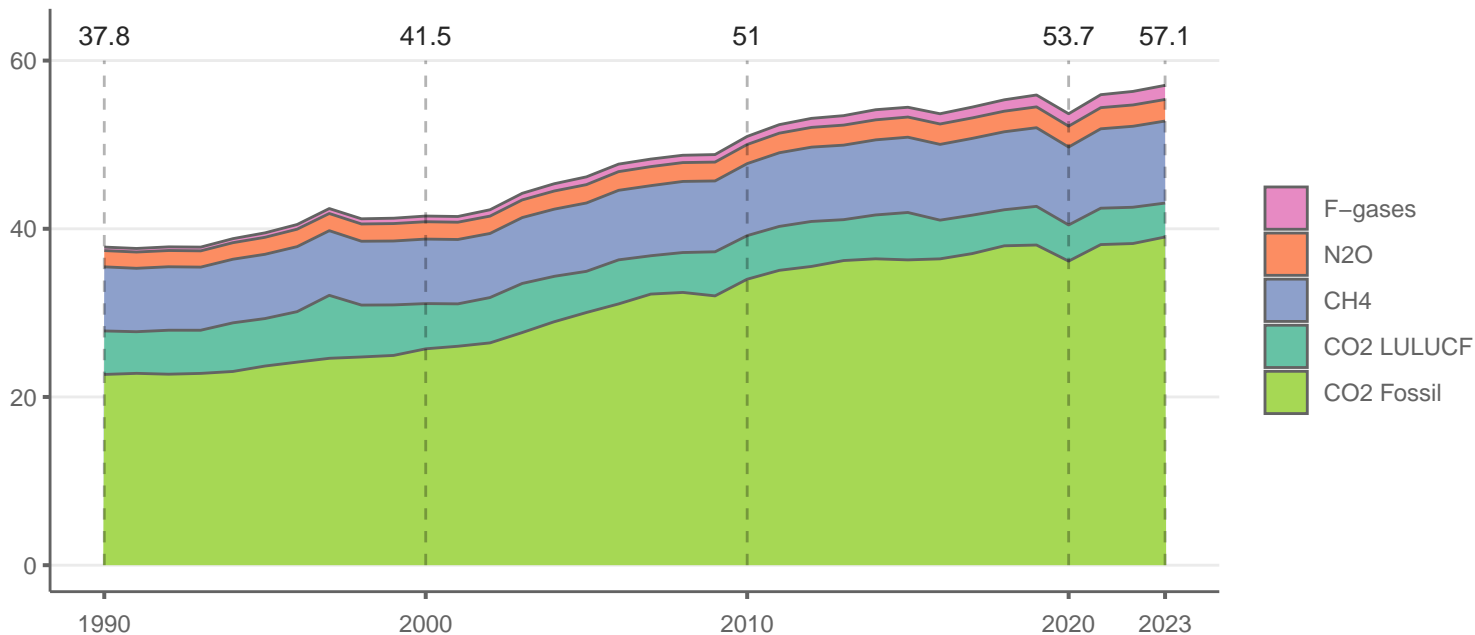


Total net anthropogenic greenhouse gas emissions from 1990–2023

Gt CO₂ /year



Non-CO₂ greenhouse gases are converted to CO₂ equivalents using global warming potentials with a 100-year time horizon from the IPCC AR6 WGI (Forster et al., 2021). Sources: EDGARv9 (Crippa et al., 2024); GCB 2023 (Friedlingstein et al., 2023).