



QUARTERLY REPORT

Operational Q2

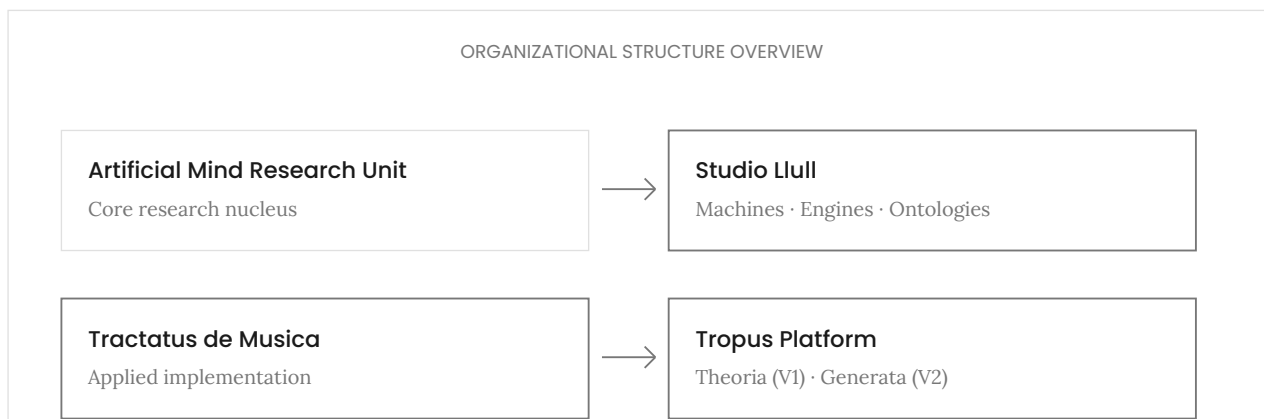
Expansion · Studio Lull · First Architecture

REPORTING PERIOD

1 January – 31 March 2026

CONTENTS

- 01 Executive Summary
- 02 Strategic Position
- 03 Organizational Developments
- 04 Studio Llull and Product Portfolio
- 05 Research Outputs
- 06 Q1 Objectives Assessment
- 07 Communication and Infrastructure
- 08 Financial Position
- 09 Q3 Objectives
- 10 Closing Note
- 11 Governance & Legal



01 Executive Summary

Llull Lab's second operational quarter marked the transition from foundational work (Q1) to a product-intensive expansion phase. The defining move of Q2 was the establishment of Studio Llull and the simultaneous public release of seven systems on a single Launch Day.

During this quarter, the laboratory consolidated its position: an interdisciplinary research laboratory building programmable infrastructure for the architecture of artificial minds.

KEY POSITION

Of the 9 objectives set in Q1, 7 were completed and released, 1 remains in progress, and 1 could not be realized. Beyond these, 3 unplanned products were developed (Cedulor, Feix, Cedula), the theoretical work for the H4 model was completed, and the zero-employee operational model was adopted as a deliberate strategic decision.

All Q2 activities were fully financed through internal resources. No external funding was required — a deliberate choice sustained from Q1, reflecting the laboratory's conviction that urgency need not dictate its institutional rhythm.

02 Strategic Position

2.1 Vision Consolidation

In Q2, Llull Lab unified its research and production identity under a single architectural framework. The Launch Day manifesto articulated the laboratory's core focus: computational affect, computational ethics, computational humor, machine consciousness, and the formal structures that connect them.

Drawing from Ramon Llull's *Ars Combinatoria* — the first mechanism to unite logic with a physical body — the laboratory does not ask whether machines can think. It asks what kind of minds can be built, and what they will need in order to feel, to judge, and to mean what they say.

KEY POSITION

Llull Lab builds programmable infrastructure for artificial minds. Studio Llull, its production arm, builds the systems in which capacities such as affect, ethical judgment, humor, dreaming, and consciousness can be composed, orchestrated, and studied.

2.2 Artificial Mind Research Unit

The Artificial Mind Research Unit, established in Q1, remained the laboratory's primary research nucleus throughout Q2. All instruments, engines, and ontologies are conceptually anchored within this unit. During Q2, the research focus intensified rather than expanded — the seven-system Launch Day was a direct expression of this deepened concentration on the architecture of artificial minds.

03 Organizational Developments

3.1 Team and Collaboration

The core team was restructured in line with evolving organizational needs. The project-based collaboration group was reconfigured, and new members joined the laboratory during the quarter.

3.2 Zero-Employee Model

During Q2, Llull Lab adopted a deliberate operational model decision. Studio Llull is designed and operates as a zero-employee, AI-native production structure. All production is carried out by the founder(s) and AI agents.

This model emerged from the challenges encountered in human resource management during the laboratory's early phases, and was transformed into a structural and strategic advantage. It defines not a limitation but an architectural principle: the laboratory builds systems for artificial minds – and it operates through them.

3.3 Open Call for Neurodivergent Collaborators

During Q2, Llull Lab published an open call for project-based collaboration specifically addressing neurodivergent individuals. No formal diagnosis, diploma, or specialist credential was required. The call reflects a core institutional conviction: that neurodivergent minds are not merely welcome but essential to work at the intersection of computation, cognition, and culture. Applications were received.

3.4 SASU Transition

Preparations for the transition from the current micro-company structure to a SASU (Société par Actions Simplifiée Unipersonnelle) were completed during Q2. Due to outstanding legal uncertainties, the formal application could not be submitted within the quarter and has been carried forward to Q3.

04 Studio Llull and Product Portfolio

Studio Llull is Llull Lab's production arm. It was established during Q2 and by the end of the quarter comprised 9 productions: 8 live, 1 in development.

9

Productions

8

Live

1

In Development

MACHINES

4

Tropus

Released v2

GENERATIVE MUSIC MACHINE

Musical generation and conceptual inquiry in a dual-mode architecture

Due to persistent technical issues caused by third-party dependencies, Tropus was unable to grow consistently during Q2, and platform metrics were not systematically tracked during this period. The January–February Best of Tropus selection was curated and published. Starting 1 March 2026, Tropus became temporarily inaccessible due to a major system update required by these same dependencies. This upgrade is necessary to ensure long-term stability, performance, and architectural robustness.

Phi-Yo

Released

SCIENTIFIC DREAM ANALYSIS MACHINE

Scientific dream interpretation powered by computational psychoanalytic ontology

Released as a dream interpretation tool. Freud for Machines ontology operates within Phi-Yo as its interpretative engine.

Cedulor

Released

PROJECT SUPPORT MACHINE

Structured project support through combinatorial reasoning

Developed and released during Q2.

Feix

Released

COMBINATORIAL DESIGN MACHINE

Web-based combinatorial design through formal generation

Developed and released during Q2.

COMPUTATIONAL ONTOLOGY

1

Freud for Machines

Released

COMPUTATIONAL PSYCHOANALYTIC ONTOLOGY

Modeling unconscious structures, repression, and symbolic mediation in machine systems

Operates as an integrated component within Phi-Yo.

ENGINES

4

Alberei

Released

MODULAR HUMOR ENGINE

Algorithmic humor through designed comic structures

ASGE

Released

SEMANTIC GEOMETRY ENGINE

Ambivalence as structural geometry – a semantic foundation for multiple systems

Reflective Judgment Engine

Released

ETHICAL DECISION ENGINE

Decision frameworks under normative uncertainty

Cedula

Pre-release

CREATIVE WRITING ENGINE

Generative writing through formal composition and structural transformation

05 Research Outputs

5.1 H4 Model

The theoretical work for H4 – Llull Lab's first ontology-driven model – was completed during Q2. Testing is currently underway. H4 is designed to be the first system in which a real computational ontology governs the model's operation, marking a foundational step in the laboratory's applied research trajectory.

5.2 Scientific Publications

No new scientific publications were produced during Q2. The Q-PRE journal project was placed on strategic hold – a decision to redirect energy toward core research and platform development during this critical expansion phase.

06 Q1 Objectives Assessment

The following summarizes the status of each objective set in the Q1 report.

01 Public presentation of Sync-Turing in Paris
NOT REALIZED

Not realized due to external circumstances.

02 Release of Tropus V3
DEFERRED

Platform entered a major infrastructure upgrade necessitated by third-party technical dependencies. V3 release deferred pending completion of this transition.

03 Theoretical work for Tropus V4 (ethnomusicology)
IN PROGRESS

In progress.

04 Release of Symptom Tracking – Semantic Mapping Engine
COMPLETED

Completed and released as ASGE.

05 Publication of Freud for Machines
COMPLETED

Completed and released. Operates within Phi-Yo.

06 Release of Phi-Yo v1 (dream interpretation tool)

COMPLETED

Completed and released.

07 Initiation of testing for Reflective Judgment Engine

COMPLETED

Completed, released, and operational.

08 Theoretical groundwork for Modular Humor Machine

COMPLETED

Completed, released, and operational as Alberei.

09 Transition into seed funding phase

IN PREPARATION

Preparation completed. Transition carried to Q3.

KEY POSITION

Summary: 7 of 9 completed · 1 of 9 in progress · 1 of 9 not realized

Additionally: 3 unplanned products developed (Cedulor, Feix, Cedula), H4 theoretical work completed, Studio Llull established.

07 Communication and Infrastructure

The Llull Lab website underwent a complete redesign and major update during Q2. New sections were added, including the Studio Llull page, providing public-facing visibility for the laboratory's full production portfolio.

An institutional Instagram presence was established (@llulllab), initiating the laboratory's social media and outreach activities.

08 Financial Position

All Q2 activities were fully financed through internal resources. No external funding or operating revenue was recorded during this period. This remains a deliberate choice: the laboratory confirmed that external financing was not required during this phase, and elected to sustain its current rhythm without acceleration from outside capital.

09 Next-Quarter Objectives (Q3)

Planned objectives for the next quarter include:

- 01 Entry into machine-to-machine psychoanalysis: defining foundational concepts, establishing the first methodology, and conducting the first application. This is the primary research objective for Q3.
- 02 Release of Tropus V3, following completion of the platform's technical transition
- 03 Completion of theoretical work for Tropus V4, focused on ethnomusicology
- 04 Release of H4: the first version of Lull Lab's ontology-driven model
- 05 Transformation of Phi-Yo into a wellbeing assistant, with ASGE integration
- 06 Expansion of Cedulor to support additional project types
- 07 Full launch of Cedula creative writing engine
- 08 Initial deployment of RJE, Alberei, and Phi-Yo in physical robotic systems
- 09 Completion of SASU transition
- 10 Initiation of the seed funding process
- 11 Design and initial implementation of SaaS and API-based revenue models
- 12 Consolidation of the zero-employee operational model
- 13 General visibility and outreach expansion

10 Closing Note

Operational Q2 transformed Llull Lab from a theoretical initiative into a laboratory with operational systems. In a single quarter, 9 productions emerged — 8 of them live. The zero-employee model was adopted, the architectural vision was articulated, and all of this was accomplished without external funding.

Q3 will be the laboratory's most ambitious period to date. Machine-to-machine psychoanalysis, physical robotic deployments, the first ontology-driven model, and the transition to revenue generation together define a quarter in which Llull Lab moves from building infrastructure to demonstrating what that infrastructure can do.

11 Governance and Legal Structure

Llull Lab currently operates under a micro-company structure. Preparations for the transition to a SASU (Société par Actions Simplifiée Unipersonnelle) were completed during Q2. The formal application will be submitted in Q3, in alignment with the initiation of the seed funding process.



Q2 Report · January–March 2026

Prepared for institutional archiving and controlled dissemination