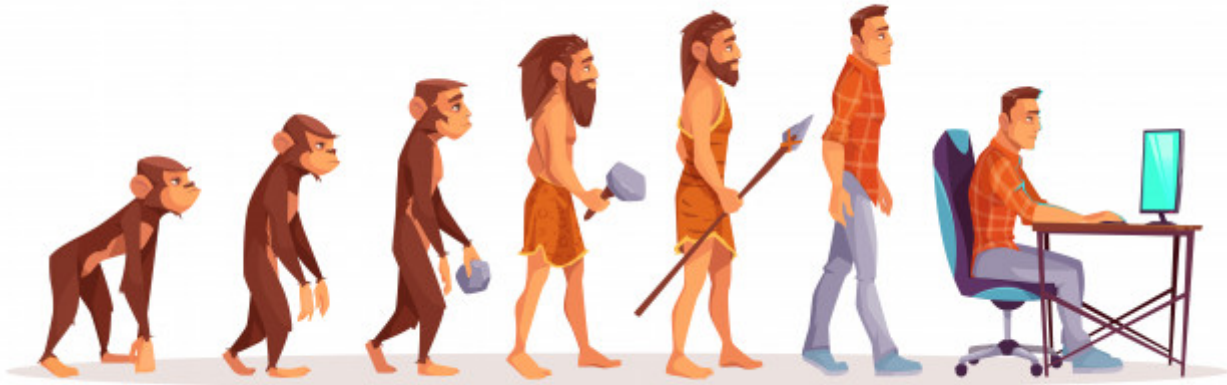




Lampros Sp. Mouselimis

✉ mouselimislampros@gmail.com | 🏠 mlampros.github.io/ | ☎ 0000-0002-8024-1546 | 📄 JXg3b58AAAAJ | 🌐
mlampros | 📺 [mlampros](#) | 🐦 [lampros_twit](#)

I'm a data & remote sensing analyst and open source author / maintainer of numerous R language packages (CRAN, Github), competent in two programming languages (R, Python) who takes advantage of C++ (in R through the Rcpp and RcppArmadillo packages and in python through Cython) to improve the efficiency of internal functions



R-Programming Packages

PlanetNICFI

PROCESSING OF THE 'PLANET NICFI' SATELLITE IMAGERY

- http://mlampros.github.io/2021/06/12/Planet_NICFI_Satellite_Imagery/

Author and maintainer (CRAN)

2021-06-10

fitbitViz

'FITBIT' VISUALIZATIONS

- http://mlampros.github.io/2021/05/20/fitbitViz_package/

Author and maintainer (CRAN)

2021-05-18

CopernicusDEM

COPERNICUS DIGITAL ELEVATION MODELS

- http://mlampros.github.io/2021/05/21/copernicusDEM_package/

Author and maintainer (CRAN)

2021-05-15

fastText

EFFICIENT LEARNING OF WORD REPRESENTATIONS AND SENTENCE CLASSIFICATION

- http://mlampros.github.io/2021/05/14/fasttext_language_identification/

Author and maintainer (CRAN)

2021-05-14

SuperpixelImageSegmentation

SUPERPIXEL IMAGE SEGMENTATION

- http://mlampros.github.io/2018/11/09/Image_Segmentation_Superpixels_Clustering/

Author and maintainer (CRAN)

2018-12-30

elmNNRcpp

THE EXTREME LEARNING MACHINE ALGORITHM

- http://mlampros.github.io/2018/07/05/the_extreme_learning_machine_package/

Author and maintainer (CRAN)

2018-07-05

nmslibR

NON METRIC SPACE (APPROXIMATE) LIBRARY

- http://mlampros.github.io/2018/02/27/the_nmslibR_package/

Author and maintainer (CRAN)

2018-02-27

RGF

REGULARIZED GREEDY FOREST

- http://mlampros.github.io/2018/02/14/the_RGF_package/

Author and maintainer (CRAN)

2018-02-13

GeoMongo

GEOSPATIAL QUERIES USING 'PYMONGO'

- http://mlampros.github.io/2017/08/07/the_GeoMongo_package/

Author and maintainer (CRAN)

2017-08-07

fuzzywuzzyR

FUZZY STRING MATCHING

- http://mlampros.github.io/2017/04/13/fuzzywuzzyR_package/

Author and maintainer (CRAN)

2017-04-11

geojsonR

A GEOJSON PROCESSING TOOLKIT

- http://mlampros.github.io/2017/03/29/geojsonR_package/

Author and maintainer (CRAN)

2017-03-28

textTinyR

TEXT PROCESSING FOR SMALL OR BIG DATA FILES

- http://mlampros.github.io/2017/01/05/textTinyR_package/

Author and maintainer (CRAN)

2017-01-07

GloveR

GLOBAL VECTORS FOR WORD REPRESENTATION (GLOVE)

- <https://mlampros.github.io/GloveR/>

Author and maintainer (Github)

2017-01-04

RandomSearchR

RANDOM SEARCH IN R

- http://mlampros.github.io/2016/03/14/random_search_R/

Author and maintainer (Github)

2016-09-19

ClusterR

GAUSSIAN MIXTURE MODELS, K-MEANS, MINI-BATCH-KMEANS, K-MEDOIDS AND AFFINITY PROPAGATION CLUSTERING

- http://mlampros.github.io/2016/09/12/clusterR_package/

Author and maintainer (CRAN)

2016-09-06

KernelKnn

KERNEL K NEAREST NEIGHBORS

- <http://mlampros.github.io/2016/07/10/KernelKnn/>

Author and maintainer (CRAN)

2016-07-11

OpenImageR

AN IMAGE PROCESSING TOOLKIT

- <http://mlampros.github.io/2016/07/08/OpenImageR/>

Author and maintainer (CRAN)

2016-07-09

FeatureSelection

FEATURE EXTRACTION AND SELECTION BASED ON 'GLMNET', 'XGBOOST' AND 'RANGER'

- <http://mlampros.github.io/2016/02/14/feature-selection/>

Author and maintainer (Github)

2016-05-18

Publications

L Mouselimis

KERNELKNN: KERNEL K NEAREST NEIGHBORS

R package version

2018

L Mouselimis, C Sanderson, R Curtin, S Agrawal, B Frey, D Dueck

CLUSTERR: GAUSSIAN MIXTURE MODELS, K-MEANS, MINI-BATCH-KMEANS, K-MEDOIDS AND AFFINITY PROPAGATION CLUSTERING; 2020

R package version

Education

University of Tuebingen

DIPLOM IN BUSINESS ADMINISTRATION

- The effects of the introduction of Euro to the international price policy

Germany

September 1996–December 2001

Experience

Olympic Games Athens 2004

ASSISTANT LOGISTICS DEPARTMENT

- Employed as an assistant in the logistics department of the Olympic Games 2004

Athens

May 2004–September 2004

Information Research International

FIELD WORKER (DATA COLLECTOR)

- Employed as a data collector in a market research company

Athens

November 2004–February 2016

Post Graduate Training

Learn to Program, The Fundamentals [Coursera]

UNIVERSITY OF TORONTO

- Online

Python

statement of completion

Learn to Program, Crafting Quality Code [Coursera]

UNIVERSITY OF TORONTO

- Online

Python

statement of completion

Coding the Matrix, Linear Algebra through Computer Science Applications [Coursera]

BROWN UNIVERSITY

- Online

Python

statement of completion

An Introduction to Interactive Programming in Python [Coursera]

RICE UNIVERSITY

- Online

Python

statement of completion

Cluster Analysis in Data Mining [Coursera]

UNIVERSITY OF ILLINOIS AT URBANA-CHAMPAIGN

- Online

Python

statement of completion

Sequence Models [Coursera]

DEEPLARNING.AI

- Online

Python

statement of completion

Web Intelligence and Big Data [Coursera]

INDIAN INSTITUTE OF TECHNOLOGY DELHI

- Online

Python, SQL, R

statement of completion

Data-driven Astronomy [Coursera]

UNIVERSITY OF SYDNEY

- Online

Python, SQL, R

statement of completion

Introduction to Data Science [Coursera]

UNIVERSITY OF WASHINGTON

- Online

Python, SQL, R

statement of completion

R Programming [Coursera]

JOHNS HOPKINS UNIVERSITY

- Online

R

statement of completion

Getting and Cleaning Data [Coursera]

JOHNS HOPKINS UNIVERSITY

- Online

R

statement of completion

The Data Scientist's Toolbox [Coursera]

JOHNS HOPKINS UNIVERSITY

- Online

R

statement of completion

Reproducible Research [Coursera]

JOHNS HOPKINS UNIVERSITY

- Online

R

statement of completion

Exploratory Data Analysis [Coursera]

JOHNS HOPKINS UNIVERSITY

- Online

R

statement of completion

Developing Data Products [Coursera]

JOHNS HOPKINS UNIVERSITY

- Online

R

statement of completion

Practical Machine Learning [Coursera]

JOHNS HOPKINS UNIVERSITY

- Online

R

statement of completion

Regression Models [Coursera]

JOHNS HOPKINS UNIVERSITY

- Online

R

statement of completion

Statistical Inference [Coursera]

JOHNS HOPKINS UNIVERSITY

- Online

R
statement of completion

Computing for Data Analysis [Coursera]

JOHNS HOPKINS UNIVERSITY

- Online

R
statement of completion

Bayesian Statistics: From Concept to Data Analysis [Coursera]

UNIVERSITY OF CALIFORNIA, SANTA CRUZ

- Online

R
statement of completion

Core Concepts in Data Analysis [Coursera]

HIGHER SCHOOL OF ECONOMICS

- Online

Matlab, R
statement of completion

Machine Learning [Coursera]

STANFORD UNIVERSITY

- Online

Octave
statement of completion

The Analytics Edge [Edx]

MITX – 15.071X

- Online

R
statement of completion

Introduction to Big Data with Apache Spark [Edx]

BERKELEYX – CS100.1X

- Online

Python, Spark
statement of completion

Scalable Machine Learning [Edx]

BERKELEYX - CS190.1X

- Online

Python, Spark
statement of completion

Data mining with Weka [weka.waikato.ac.nz]

UNIVERSITY OF WAIKATO

- Online

Weka
statement of completion

More data mining with Weka [weka.waikato.ac.nz]

UNIVERSITY OF WAIKATO

- Online

Weka
statement of completion

Introduction to statistical learning [online.stanford.edu]

STANFORD UNIVERSITY

- Online

R
statement of completion

Datenmanagement mit SQL [open.hpi.de]

HASSO-PLATTNER-INSTITUT

- Online

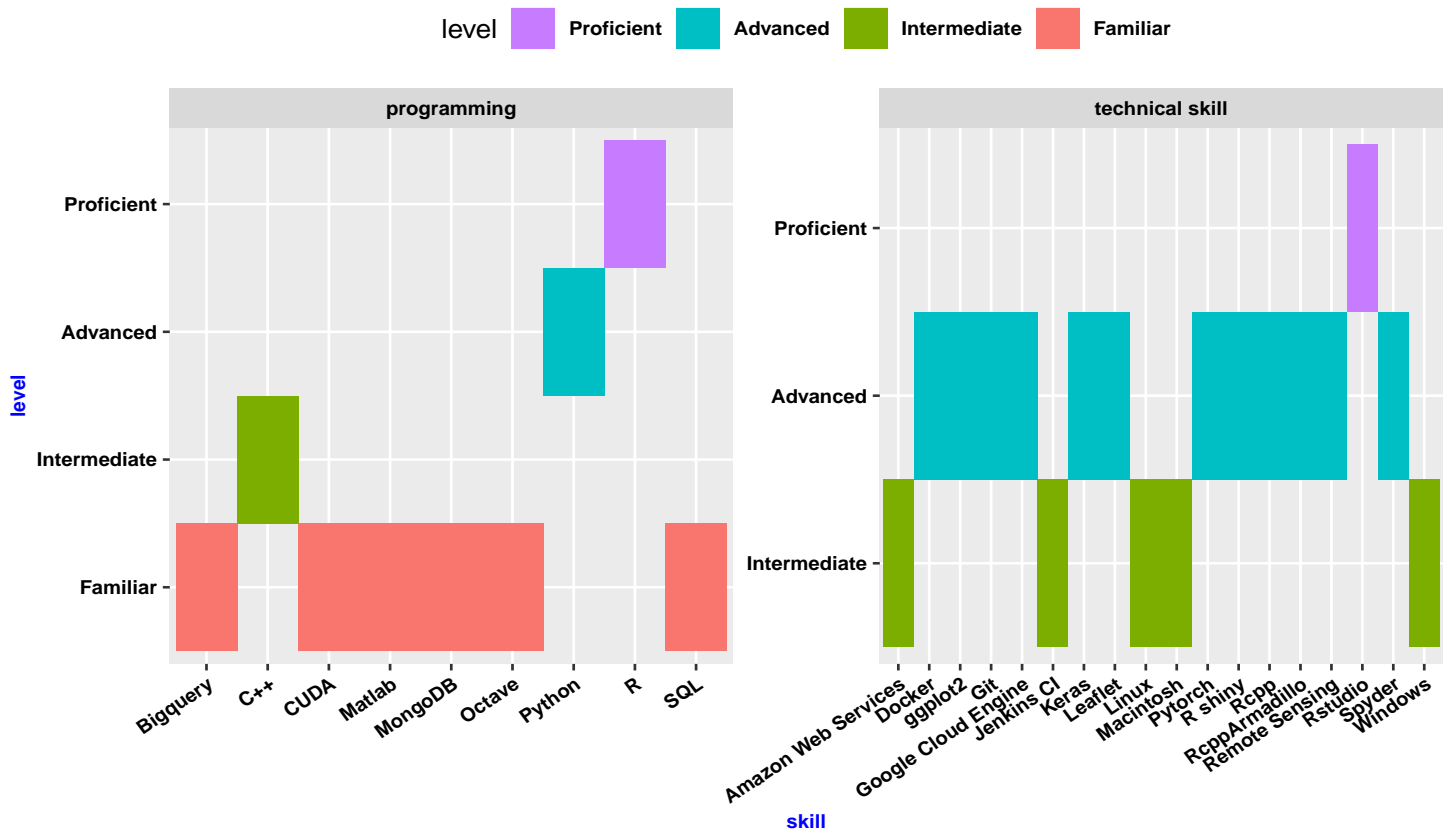
SQL
statement of completion

Spoken Languages

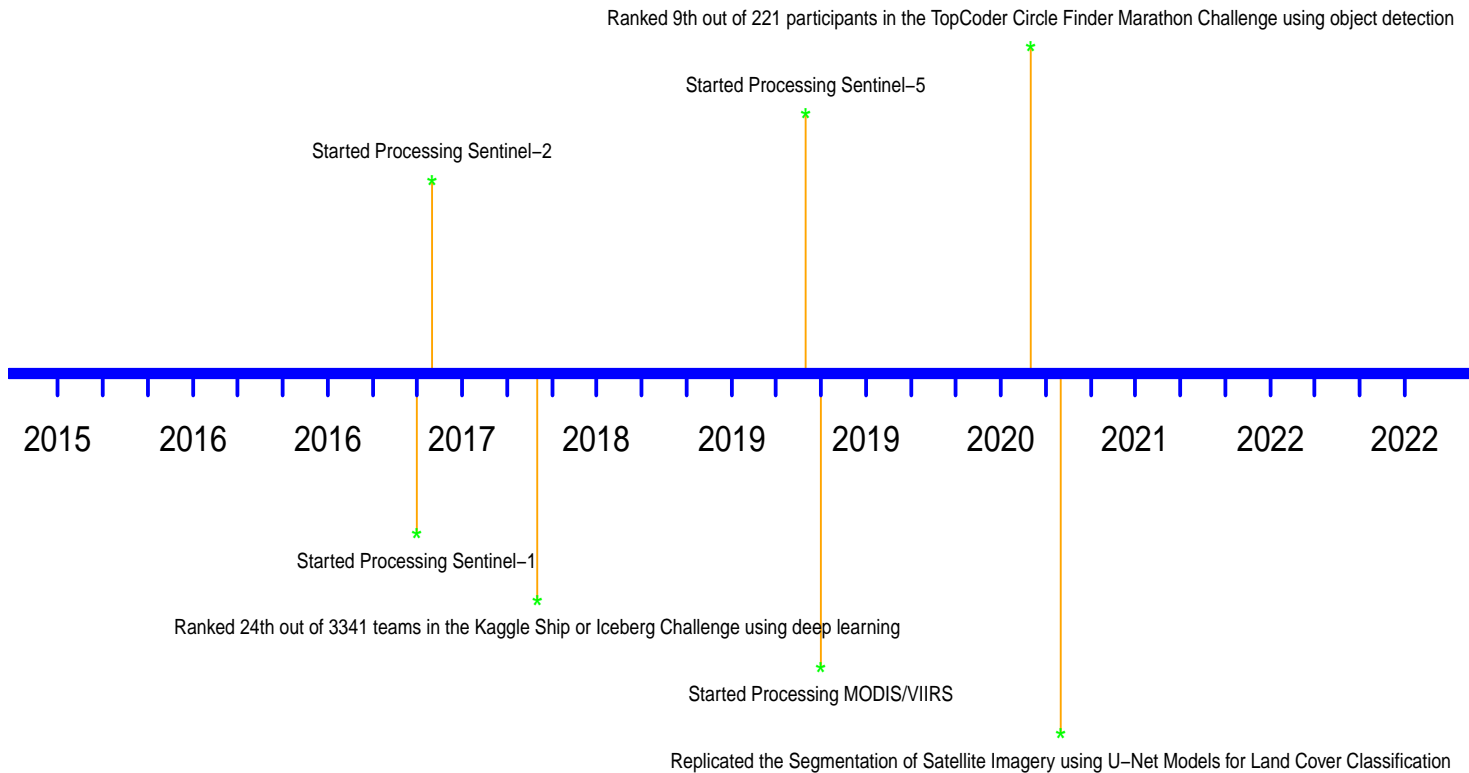
type	Reading	Writing	Listening	Speaking	Certificate	Institution	Year
Greek	native	native	native	native	”	”	”
English	22	28	18	23	TOEFL Ibt	ETS	2018
English	24	27	20	20	TOEFL Ibt	ETS	2011
English	C1	C1	C1	C1	State Certificate	European Framework	2010
English	B2	B2	B2	B2	ECCE	University of Michigan	2008
German	C2	C2	C2	C2	State Certificate	European Framework	2003

Common European Framework of Reference for Languages: A1/A2: Basic User. B1/B2: Independent User. C1/C2: Proficient User

Technical Skills



Geospatial Analysis (Timeline)



Personal Data

Date of Birth	06th September 1976
Sex	Male
Place of Birth	Greece
Marital Status	Single
Health	Irritable Bowel Syndrome (IBS). IBS affects about 1 out of 10 people according to the International Foundation for functional gastrointestinal disorders (IFFGD)
Driving License	Car, Motorcycle
triathlon	from 2007 to 2010 I was an amateur triathlete
trail running	Since 2006 I participate occasionally in trail running competitions
Free time Activities	running, swimming, cycling, tennis playing, watching movies
