

Modo Tab Mount Basic

MTM-BASIC-EU



Installation Guide & User Manual

© 2025 Modoco | Designed and assembled in EU
www.modoco.io

1. Product Description

Modo Tab Mount Basic is a magnetic, wall-mounted tablet holder designed for clean and minimal tablet installations.

The mount provides a secure magnetic docking system and a floating tablet appearance while allowing a charging cable to be routed discreetly through the wall or surface-mounted cable channel.

The product is designed for installation on **standard EU wall installation back boxes** and contains **no active electronics or power components**.

2. Intended use

Modo Tab Mount Smart is intended for:

- Indoor, dry-location installation
- Wall-mounted tablet charging and display
- Use with low-voltage consumer tablets

The product does **not** include a power supply or electronics.

3. Safety Information

- Installation involves mechanical mounting only.
- No connection to AC mains is required.
- Ensure the wall structure and installation box are suitable for the tablet weight.
- Intended for indoor, dry-location use only.

4. Before Installation

Ensure that:

- A **standard EU wall installation box** is present and securely mounted.
- A suitable charging cable is available.
- The tablet is compatible in size (< 13") and weight (< 1.4 kg) with the mount.

5. Package Contents

Verify that the package contains the following items:

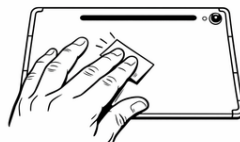
1. Isopropyl alcohol cleaning pad
2. Tablet backplate (metal plate with adhesive)
3. Alignment template (for silicone pads and cable routing)
4. Silicone pads – 4 pcs
5. Magnetic wall box mount (passive, no electronics)
6. Self-tapping M3 mounting screws – 2 pcs
7. Adhesive primer applicator (single-use)

If any items are missing or damaged, do not install the product.

6. Installation Instructions

6.1. Prepare the tablet

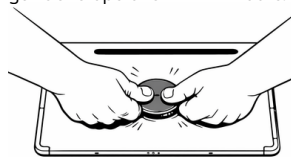
6.1.1. Clean the rear surface of the tablet using the supplied isopropyl.



6.1.2. (Optional – Recommended for best adhesion). Apply the supplied adhesive primer to the area where the backplate will be installed. Apply a thin, even layer using light strokes. Allow the primer to dry completely – typically ~5 minutes at room temperature. Do not exceed 60 minutes before proceeding.

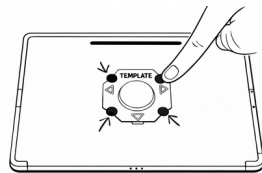
6.1.3. Remove the protective film from the adhesive side of the tablet backplate.

6.1.4. Position the backplate centrally on the tablet and press firmly for at least 20 seconds. Initial handling strength is achieved immediately; full bond strength develops over 24–72 hours.



6.1.5. Place the alignment template over the installed backplate.

6.1.6. Remove the protective film from the silicone pads and attach one pad to each corner indicated on the template.



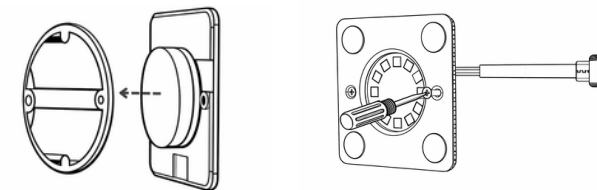
6.1.7. Place the alignment template over the installed backplate.

6.1.8. Remove the protective film from the silicone pads and attach one pad to each corner indicated on the template.

6.1.9. Remove the template. The tablet is now prepared for mounting.

6.2. Install the Wall Mount

- 6.2.1. Align the wall mount with the installation box and the screw holes.
- 6.2.2. Route the tablet charging cable through the designated mount cutouts.
- 6.2.3. Insert the supplied screws and tighten evenly. Do not overtighten.

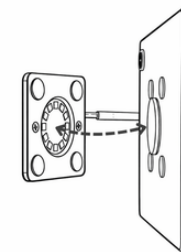


6.2.4. Ensure only the required cable length remains outside the wall.

6.2.5. Connect the charging cable to the tablet.

6.2.6. Attach the tablet to the mount.

6.2.7. The tablet will magnetically engage and lock into position.



7. Normal operation

During normal operation, the tablet can be attached or removed by gently pulling it away from the wall.

Charging behavior depends on the connected charger and tablet.

No user interaction is required after installation.

8. Additional Information

Product contains no active electronics.
No power supply included.

9. Disposal & Environmental Information

This product must not be disposed of with household waste. Dispose of electrical and electronic equipment in accordance with local regulations.

10. Manufacturer Information

MB MODOCO
Rytmečio 10, Kaunas 47491
Lithuania
info@modoco.io