



ELECTRICIAN

SECOND

YEAR



 ohmlaws.github.io

All in one Suggestion Book

Trade Theory
Workshop Calculation & Science
Engineering Drawing
Employability Skills

© ohmlaws.github.io

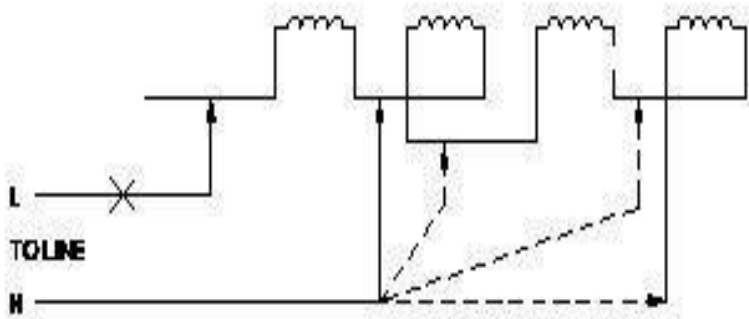
ELECTRICIAN THEORY

1- How many parallel paths in duplex lap winding of a 4 pole DC generator?

- (A) 8
- (B) 4
- (C) 12
- (D) 6

Answer-A

2- Which type of testing of winding is illustrated as shown in the figure?



- (A) Short circuit test
- (B) Voltage drop test
- (C) Resistance test
- (D) Polarity test

Answer-C

3- Which circuit, the limit switches are used?

- (A) Domestic power circuits
- (B) Battery Charging Circuit
- (C) Lift circuits
- (D) Street lighting

Answer-C

4- Which device is used to test stator winding short and open fault?

- (A) Digital multimeter
- (B) Internal Growler
- (C) Tong Tester
- (D) External Growler.

Answer-B

5- Which type of DC motor is used for sudden application of heavy loads?

- (A) Differential compound motor
- (B) Series motor
- (C) Shunt motor
- (D) Cumulative compound motor

Answer-D

6- Which device is controlling the operations in the sequential control systems?

- (A) Timer
- (B) Relays
- (C) Control transformer
- (D) Contactor

Answer-A

7- What is the full form of VVFD?

- (A) Variable Value Voltage Frequency Drive
- (B) Voltage Value Variable Frequency Drive
- (C) Variable Voltage Variable Frequency Drive
- (D) Value Variable Voltage and Frequency Drive

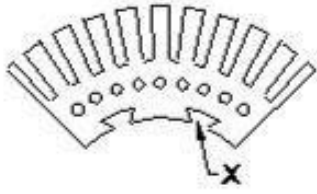
Answer-C

8- Which material is used for the damper winding?

- (A) Cast-iron bar
- (B) Copper bar
- (C) Stainless steel bar
- (D) Silicon steel bar.

Answer-B

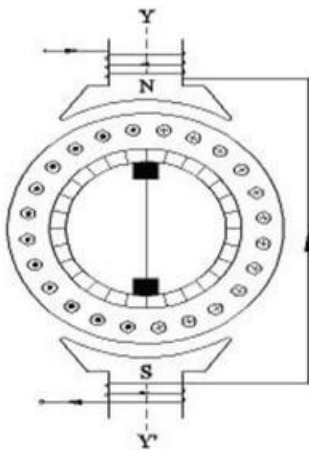
9- What is the purpose of slot marked as 'X' as shown in the figure?



- (A) To make air circulation
- (B) For lubrication purpose
- (C) For easy removal from shaft
- (D) To fix the key way

Answer-D

10- What is the name of the AC single phase motor as shown in the diagram?



- (A) Shaded pole motor
- (B) Permanent capacitor motor
- (C) Universal motor
- (D) Repulsion motor

Answer-D

11- Why negative feed back is required in amplifier circuits?

- (A) To reduce the distortion
- (B) To increase the output voltage gain
- (C) To increase the output current gain
- (D) To increase the amplification factor

Answer-A

12- Which type of line insulator is used for terminating on corner post?

- (A) Suspension insulator

- (B) Shackle insulator
- (C) Strain insulator
- (D) Pin insulator

Answer-B

13- What is the function of IGBT in AC drive?

- (A) Stabilize the output voltage from the rectifier
- (B) Controls the power delivered to the motor
- (C) Converts incoming A.C into D.C
- (D) Smoothing incoming A.C supply

Answer-B

14- Which formula is used to calculate EMF/phase in a ideal alternator?

- (A) $E = 4.44 \Phi FT$
- (B) $E = 4.44\Phi FT$
- (C) $E = 2.22\Phi FT$
- (D) $E = 2.22 \Phi FT$

Answer-A

15- What is the synchronous speed of an A.C 3 phase induction motor having 6 poles at a frequency of 50 Hertz?

- (A) 800 rpm
- (B) 1200 rpm
- (C) 1440 rpm
- (D) 1000 rpm

Answer-D

16- Which is proportional to the torque in D.C motor?

- (A) Back e.m.f.
- (B) Armature current
- (C) Field current
- (D) Terminal voltage

Answer-B

17- Which relay is hold their contacts in the position after power is cutoff?

- (A) Voltage relay

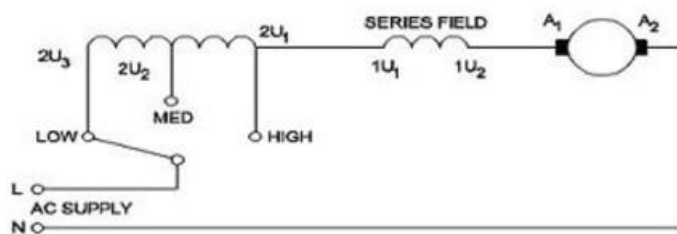
- (B) Read relay
- (C) Current relay
- (D) Latching relay. Answer-D

18- What is the use of synchro scope?

- (A) Adjust the output voltage
- (B) Adjust the phase sequence
- (C) Adjust the supply frequency
- (D) Indicate the correct instant for paralleling

Answer-D

19- What is the name of the speed control method of AC single phase motor as shown in the diagram?



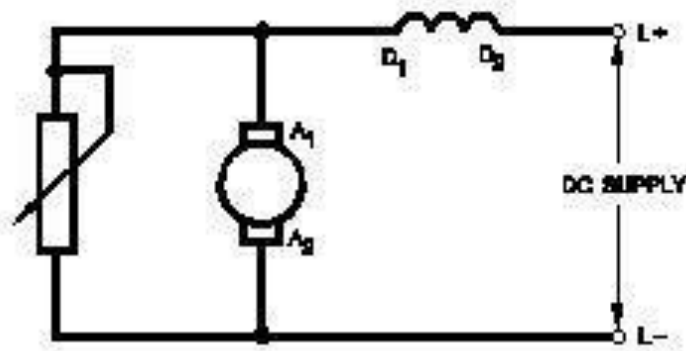
- (A) Tapped field method
- (B) Centrifugal switch method
- (C) Field diverter method
- (D) Voltage Control method

Answer-A

20- When all the 3 lamps become dark in the dark lamp method of parallel operation of two alternators?

- (A) Terminal voltages are equal
- (B) Voltage and frequency are equal
- (C) Voltage and power rating are equal
- (D) Frequency are same in both alternator Answer-B

21- What is the name of the speed control method of DC motor as shown in the figure?



- (A) Field diverter method
 - (B) Field tapping method
 - (C) Armature diverter method
 - (D) Voltage control method
- Answer-C

22- What is the effect in internal resistance of a discharged cell?

- (A) Decrease
- (B) Increase
- (C) Remain same
- (D) Becomes zero

Answer-B

23- Why the armature resistance of a D.C generator is kept very low?

- (A) Helps to solve Boolean Algebra
- (B) To reduce the armature current
- (C) To reduce the armature voltage drop
- (D) To reduce the armature voltage drop

Answer-C

24- Calculate the voltage and ampere/hour, if four cells rated as 1.5 V and 8 A.H are in parallel?

- (A) 1.5 V and 32 AH
- (B) 6 V and 32 AH
- (C) 6 V and 8 AH
- (D) 3 V and 16 AH

Answer-A

25- What is the formula to calculate the back emf of a D.C motor?

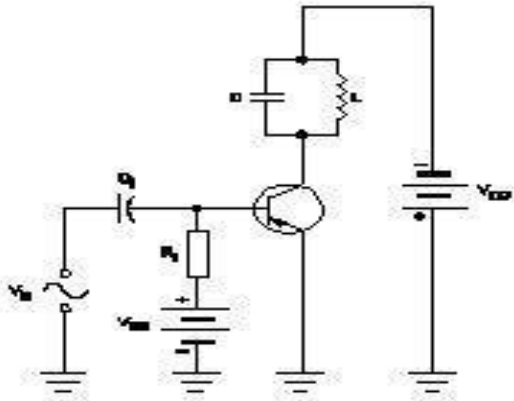
- (A) $E_b = V + I_a R_a$ Volts
- (B) $E_b = V \times I_a R_a$ Volts
- (C) $E_b = V - I_a R_a$ Volts
- (D) $E_b = V - 2I_a R_a$ Volts.

Answer-C

26- Which schedule of maintenance the resistance of earth connection of an induction motor is to be examined?

- (A) Monthly
 - (B) Yearly
 - (C) Daily
 - (D) Weekly
- Answer-B

27- Why a feedback network is used in the oscillator as shown in the circuit?



- (A) To cancel second harmonic distortion
- (B) To phase shift the signal by 60°
- (C) To cancel noise distortion
- (D) To phase shift the signal by 180°

Answer-D

28- Which is an active component?

- (A) Transistor
- (B) Inductor
- (C) Resistor
- (D) Capacitor

Answer-A

29- Which instrument is used to measure insulation resistance of a 3 phase induction motor?

- (A) Shunt type ohmmeter
- (B) Series type ohmmeter
- (C) Multimeter
- (D) Megger

Answer-D

30- Why most of the semi conductor devices are made by silicon compared to germanium?

- (A) High current carrying capacity
- (B) High barrier voltage
- (C) High resistance range
- (D) High thermal conductivity

Answer-B

31- What is the main function of Uni Junction Transistor (UJT)?

- (A) Relaxation oscillator
- (B) Microphone input device
- (C) Loud speaker amplifier
- (D) Broadcast transmitter

Answer-A

32- What is the name of the wiring accessory used in control panel wiring as shown in the figure?



- (A) DIN rail
- (B) Grommets
- (C) Race ways
- (D) G channel

Answer-A

33- What is the name of the substation that all equipment of substation is installed within the station building?

- (A) Outdoor substation
- (B) Indoor substation
- (C) Plinth mounted substation
- (D) Pole mounted substation

Answer-B

34- Which material is used for starting resistance of DC starters?

- (A) Eureka
- (B) Manganin
- (C) Constanine
- (D) Nichrome

Answer-A

35- How the voltage is received in the rotor of induction motor?

- (A) Direct connection to rotor from supply
- (B) Direct connection from stator
- (C) By the transformer action of stator and rotor
- (D) Due to back emf produced in stator

Answer-C

36- Which type of D.C motor is used for constant speed drives?

- (A) Differential long shunt compound motor
- (B) Differential short shunt compound motor
- (C) DC series motor
- (D) DC shunt motor

Answer-D

37- What is the property of wave winding in D.C generator?

- (A) High current high voltage
- (B) Low current low voltage
- (C) Low current high voltage
- (D) High current low voltage.

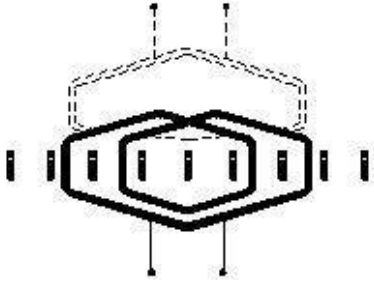
Answer-C

38- What is the phase displacement between winding in 3 phase motor?

- (A) 180°
- (B) 120°
- (C) 90°
- (D) 360°

Answer-B

39- What is the name of the winding as shown in the figure?



- (A) Involute coil winding
- (B) Skew winding
- (C) Skein winding
- (D) Diamond coil winding

Answer-C

40- What is the cause for hunting effect in an alternators?

- (A) Running with fluctuation of speed
- (B) Running without load
- (C) Due to continuous fluctuation in load
- (D) Due to over load

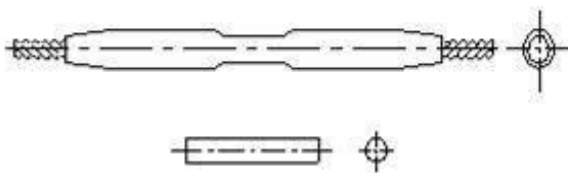
Answer-C

41- What is the total electrical degrees of a 3 phase, 4 pole AC machine?

- (A) 180°
- (B) 1080°
- (C) 720°
- (D) 360°

Answer-C

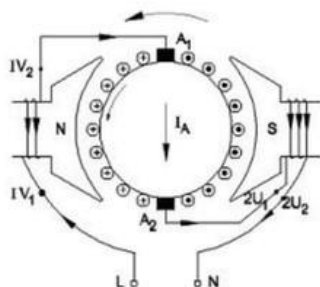
42- What is the type of over head line joint as show in the figure?



- (A) Twisted joint
- (B) Straight joint through connectors
- (C) Straight sleeve joint
- (D) Compression joint for ACSR

Answer-D

43- What is the name of the AC single phase motor as shown in the diagram?



- (A) Universal motor
- (B) Permanent capacitor motor
- (C) Shaded pole motor
- (D) Resistance start induction run motor

Answer-A

44- What are the important stages in a simple inverter?

- (A) Oscillator and rectifier stages
- (B) Oscillator and amplifier stages
- (C) Oscillator, amplifier and transformer output stages
- (D) Amplifier and transformer output stages

Answer-C

45- Which is frequency converter?

- (A) D.C to A.C converters
- (B) D.C choppers
- (C) cyclo converters
- (D) Rectifiers

Answer-C

46- How the control circuit voltage for a contactor are selected?

- (A) As per rated current
- (B) As per supply voltage
- (C) As per the type of supply
- (D) As per no volt coil rating

Answer-D

47- Why shunt field coil is connected in series with holding coil in D.C three point starter?

- (A) Protect the shunt field from over current

- (B) Increase the holding coil current
- (C) Protect the motor in case of open in shunt field
- (D) Decrease the holding coil current

Answer-C

48- Why the compensating winding is provided in the large DC generators?

- (A) To decrease the efficiency of generator
- (B) To reduce the commutation effect
- (C) To neutralize the cross-magnetizing effect of armature reaction
- (D) To neutralize the demagnetizing effect of armature reaction

Answer-D

49- What is the purpose of JOG key in control panel of D.C drive?

- (A) Stop the motor
- (B) Inching operation
- (C) Reverse the direction of motor
- (D) Restart the motor **Answer-B**

50- Which type of wire is used for rewinding of A.C 3 phase motors?

- (A) PVC covered copper winding wire
- (B) Super enamelled copper wire
- (C) Double cotton covered copper wire
- (D) Single cotton covered copper wire

Answer-B

51- What is the purpose of control transformer used in the control panel wiring?

- (A) To supply the power to the auxiliary circuits
- (B) To maintain the constant supply voltage
- (C) To supply the power to the motor circuits
- (D) To supply the power circuits **Answer-A**

52- What is the main advantage of a class A amplifier?

- (A) Maximum voltage gain
- (B) Minimum distortion
- (C) Maximum current gain
- (D) Minimum signal to noise ratio losses

Answer-B

53-Which power modulator used in the electric drive system?

- (A) Phase sequence indicator
- (B) Servo controlled voltage stabilizer
- (C) Cyclo converters
- (D) Frequency multiplier

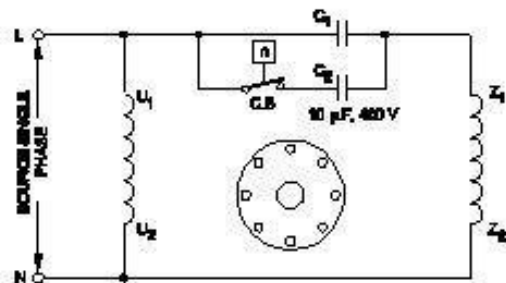
Answer-C

54-What is the formula for shunt field current R_{sh} of a DC shunt generator if V_T Terminal voltage E_g =generated EMF?

- (A) $I_{sh}=E_g/R_{sh}$ (B) $I_{sh}=V_T \times R_{sh}$ (C) $I_{sh}=E_g \times R_{sh}$ (D) $I_{sh}=V_T/R_{sh}$

Answer-D

55- Which type of single phase motor illustrated as shown in the diagram?



- (A) Capacitor start capacitor run motor
 - (B) Capacitor start induction run motor
 - (C) Permanent capacitor motor
 - (D) Universal motor.
- Answer-A

56- What is the relation between the torque and the slip of an A.C induction motor?

- (A) Slip constant if torque decreases
- (B) Slip increases if torque increases
- (C) Slip increases if torque decreases
- (D) Slip decreases if torque increases

Answer-B

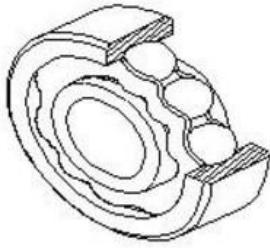
57- What is the supply frequency of an alternator having 6 poles runs at 1000 rpm?

(A) 25 Hz (C) 30 Hz

(B) 40 Hz (D) 60 Hz

Answer-C

58- What is the name of the bearing as shown in the figure?



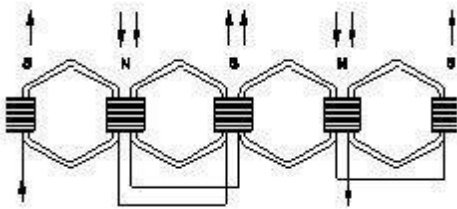
(A) Bush bearing

(B) Thrust bearing

(C) Roller bearing

(D) Ball bearing Answer-D

59- What is the name of AC coil winding as shown in the figure?



(A) Singal layer winding

(B) Whole coil winding

(C) Double layer winding

(D) Half coil winding

Answer-B

60-What is the purpose of the damper winding in a synchronous motor at starting?

(A) Produces a high voltage to oppose the stator flux

(B) Produces a torque and runs near the synchronous speed

(C) Produces a high current to oppose the stator flux

(D) Produce a high magnetic-field to maintain a constant speed

Answer-B

61-What is the name of the winding if the end lead of coil 1 is connected to the beginning lead of the adjust coil 2 through the commutator segment?

- (A) Duplex wave winding
- (B) Duplex lap winding
- (C) Simplex wave winding
- (D) Simplex lap winding. Answer-D

62- Which gas is used in SF6 circuit breaker?

- (A) Sulphur hexafluoride
- (B) Sulphur dioxide
- (C) Carbon dioxide
- (D) Acetylene **Answer-A**

63- Which device detects a physical quantity?

- (A) Sensors
- (B) Starter
- (C) Motor
- (D) Circuit breaker

Answer-A

64- Which formula is used to calculate the percentage in slip of an AC 3 phase induction motor?

- (A) $(N_s - N_r) / N_s \times 100$
- (B) $(N_s - N_r) / N_r \times 100$
- (C) $(N_r - N_s) / N_s \times 100$
- (D) $(N_r - N_s) / N_r \times 100$

Answer-A

65- Which logic gate refers the truth table as given below?

A	B	$\overline{A+B}$
0	0	1
0	1	0
1	0	0
1	1	0

- (A) NOR
- (B) AND

- (C) NOT
- (D) NAND

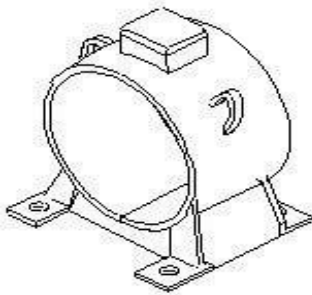
Answer-A

66- What is the formula to calculate the back EMF in a DC motor?

- (A) $E_b = ZNP / \phi 60A$
- (B) $E_b = 60A\phi / ZNP$
- (C) $E_b = 60A\phi ZNP$
- (D) $E_b = NPZ\phi / 60A$

Answer-D

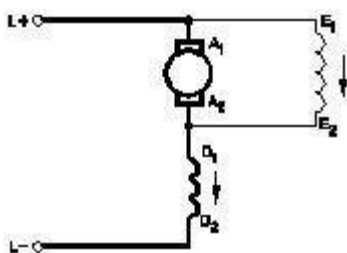
67- What is the name of the part of DC generator as shown in the figure?



- (A) Stator
- (B) Yoke (or) frame
- (C) Pole core
- (D) Pole shoes

Answer-B

68- What is the type of the DC motor as shown in the diagram?



- (A) Long shunt compound motor
- (B) Short shunt compound motor
- (C) Series motor
- (D) Shunt motor

Answer-B

69- How the gate terminal of N channel JFET biased?

- (A) Gate are reverse biased
- (B) Gates are forward biased
- (C) Gates are reverse biased with source
- (D) Gates are forward biased with drain

Answer-C

70- What is the purpose of LCD on basic operator panel in D.C drive or A.C drive?

- (A) Calculate the speed
- (B) Monitor the parameter
- (C) Detect the load current
- (D) Measure the speed

Answer-B

71- Which multi vibrator produces a repetitive pulse wave form output?

- (A) Bistable multi vibrator
- (B) Astable multi vibrator
- (C) One shot multi vibrator
- (D) Monostable multi vibrator. **Answer-B**

72- Why the pin insulators outer surface is made by glazing and bent the sides inward?

- (A) To attract the birds to sit on it
- (B) To offer the high mechanical strength
- (C) To drip off the rain water
- (D) To withstand the high voltage

Answer-C

73- Why the pole core is laminated in DC generator?

- (A) To reduce the hysteresis loss
- (B) To reduce the friction loss
- (C) To reduce the windage loss
- (D) To reduce the eddy current loss. **Answer-D**

74- Which type of DC armature winding has the front pitch (YF) greater than back pitch (YB)?

- (A) Progressive winding

- (B) Retrogressive winding
- (C) Lap winding
- (D) Wave winding

Answer-B

75- Which instrument provides a visual representation of measured or tested quantities?

- (A) Cathode ray oscilloscope
- (B) Function generator
- (C) Radio frequency generator
- (D) Voltage stabilizer

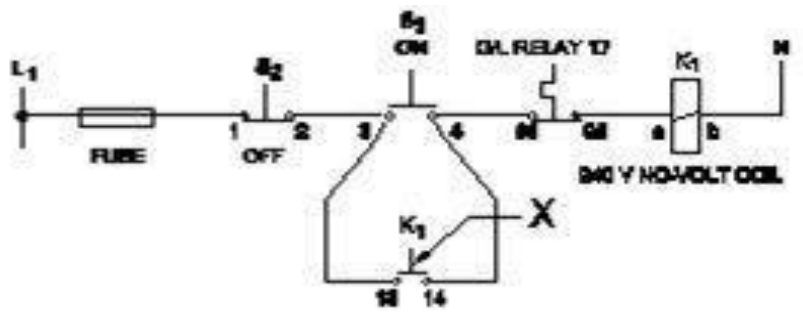
Answer-A

76- What is the peak voltage of 220V rms AC voltage?

- (A) 310.02 V
- (B) 312.25 V
- (C) 311.12 V
- (D) 315.20 V

Answer-C

77- What is the name of the contact marked as 'X' as shown in the figure?



- (A) Over load relay contact
- (B) Delta contact
- (C) Star contact
- (D) Auxiliary contact

Answer-D

78- Which type of load is protected by 'G' series MCB?

- (A) General lighting systems
- (B) Ovens
- (C) Geysers
- (D) Air conditioners

Answer-D

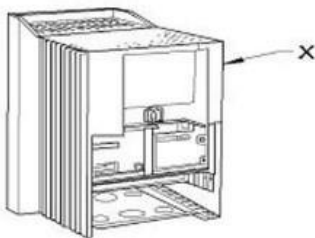
79- Which is the most effective method of balancing armature?

- (A) Plugged with lead weight balancing
 - (B) Attached with counter balancing
 - (C) Static balancing
 - (D) Dynamic balancing
- Answer-D

80- Which condition is to be satisfied before parallel operation of an alternators?

- (A) Stator impedance must be same
 - (B) Rotor impedance must be same
 - (C) Phase sequence must be same
 - (D) Rating must be same.
- Answer-C

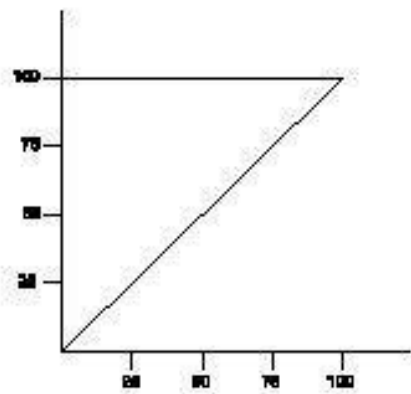
81- What is the part name of the DC drive marked as 'X' shown in the figure?



- (A) Terminal cover
- (B) keypad part
- (C) Main drive assembly
- (D) Gland plate

Answer-C

82- What is the name of the characteristic curve in D.C drive as shown in the figure?



- (A) Speed Vs torque characteristic
- (B) Speed Vs armature current characteristic
- (C) Torque Vs field current characteristic

(D) Field current Vs armature current characteristic. Answer-A

83- What is the formula to calculate the resonance frequency in an oscillator circuit?

(A) $F=1 / \sqrt{2\pi LC}$

(B) $F= 1 / LC\sqrt{2\pi}$ (C) $F= 1/2\pi LC$

(D) $F=1 /2\pi\sqrt{LC}$

Answer-D

84-Which filter circuit is capable of removing voltage spikes in the rectifier circuit?

(A) Capacitor input filter

(B) Series inductor filter

(C) RC filter

(D) LC filter

Answer-D

85-Which is the application for the single quadrant loads, operating in the first quadrant of a drive?

(A)Elevators

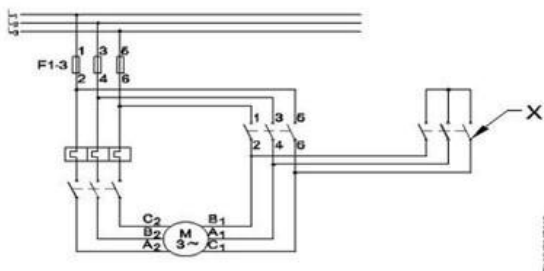
(C)Centrifugal pumps

(B)Lifts

(D)Hoists

Answer-C

86- What is the name of the contactor marked as 'X' in the star delta starter as shown in the figure?



(A) Main contactor

(B) Delta contactor

(C) Star contactor

(D) Timer

Answer-C

87- Which type of line insulator is used for terminating on corner post?

(A) Suspension insulator

(B) Pin insulator

(C) Shackle insulator

(D) Strain insulator

Answer-C

88- What is the formula for the efficiency of a D.C generator?

(A) Input/output

(B) output/input-losses

(C) input+losses/input

(D) output/output+losses

Answer-D

89- Which is the speed of the rotating magnetic field of a 3 phase, squirrel cage induction motor?

(A) Rotor speed

(B) Actual speed

(C) Synchronous speed

(D) Slip speed

Answer-C

90- Which single phase motor has squirrel cage rotor?

(A) Repulsion motor

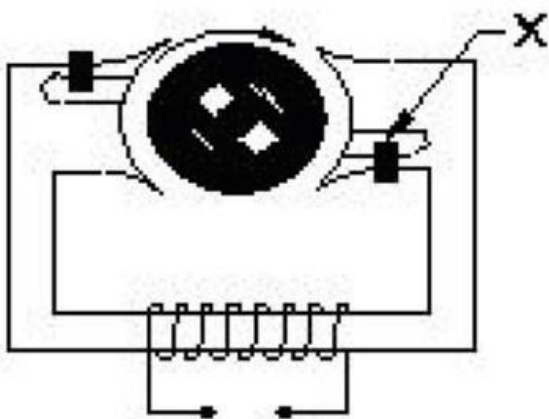
(B) Universal motor

(C) Compensated repulsion motor

(D) Split phase motor

Answer-D

91- What is the name of the part marked as 'X' of hysteresis motor as shown in the figure?



(A) Stator winding

(B) Hard steel rotor

- (C) Laminated iron stator
- (D) Shading coil

Answer-D

92- Why the starters are required to start the D.C motors?

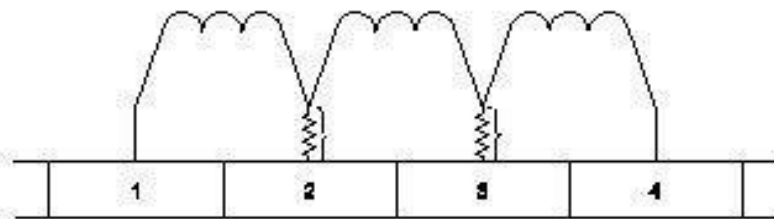
- (A) Control the armature reaction
- (B) Reduce the armature current
- (C) Increase the armature current
- (D) Regulate the field voltage. Answer-B

93- What is the purpose of tapes in winding?

- (A) Bind the coils
- (B) Insulate slots
- (C) Insulate exposed conductors
- (D) Wrap the conductor

Answer-D

94- What is the purpose of using resistance wire used in the commutator in D.C generator as shown in the figure?



- (A) For smooth reversal of current direction
- (B) To maintain constant stage
- (C) To reduce the voltage drop
- (D) To increase the statically induced emf

Answer-A

95- What is the reason for providing two separate Earthing in the panel board?

- (A) Reduce the voltage drop in panel board
- (B) Panel board is made in metal box
- (C) Control the stray field in the panel
- (D) Ensure one earthing in case of other failure Answer-D

96- What is the purpose of no volt coil in 3 point starter?

- (A) To disconnect the motor if power fails
- (B) To increase the back emf
- (C) To increase the field current
- (D) To improve the torque

Answer-A

97- Which electronic circuit is used in a automatic voltage stabilizer to produce the constant output voltage?

- (A) Amplifier circuit
- (B) Oscillator circuit
- (C) Zener diode and transistor circuit
- (D) Rectifier circuit

Answer-C

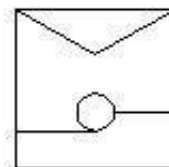
98- Why the collector region is physically made larger than emitter region in a transistor?

- (A) As input is given to collector
- (B) As base collector region is reverse biased
- (C) It has to dissipate more heat
- (D) As output is taken from collector

Answer-C

99- What is the name the starter symbol as shown in the figure?

- (A) Semi automatic star/delta starter
- (B) Auto transformer starter
- (C) Automatic star/delta starter
- (D) D.O.L starter D.O.L.



Answer-B

100- Which method is used to improve the insulation resistance in DC generator?

- (A) Running the machine with over load
- (B) Keeping the machine in idle
- (C) Blowing hot air into the machine
- (D) Replacing the brushes frequently

Answer-C

101- What is the name of the compound generator, if the shunt field is connected in parallel with armature?

- (A) Separately excited generator
- (B) Shunt generator
- (C) Long shunt compound generator
- (D) Short shunt compound generator

Answer-D

102- What is the minimum permissible single phase working voltage, if the declared voltage is 240V as per ISI?

- (A) 216 V
- (B) 233 V
- (C) 211 V
- (D) 228 V

Answer-D

103- Which material is used for the damper winding?

- (A) Cast iron bar
- (B) Copper bar
- (C) Silicon steel bar
- (D) Stainless steel bar

Answer-B

- (A) 104- How the voltage is received in the rotor of induction motor?
- (B) By the transformer action of stator and rotor
- (C) Due to back emf produced in stator
- (D) Direct connection to rotor from supply

Answer-B

105- Which logic gate refers the truth table as shown below?

A	B	Y=AB
0	0	0
1	0	0
0	1	0
1	1	1

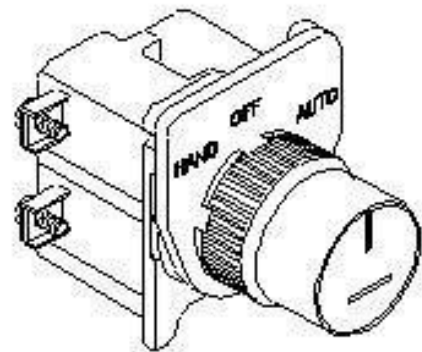
- (A) AND gate
- (B) OR gate
- (C) NOR gate
- (D) NOT gate.

Answer-A

106- Which type of handle design of rotary switch is illustrated as shown in the figure?

- (A) Key operation
- (B) Lever
- (C) Knob
- (D) Coin slot

Answer-D



107- Which is used to increase the insulation property of the insulating material used in the winding?

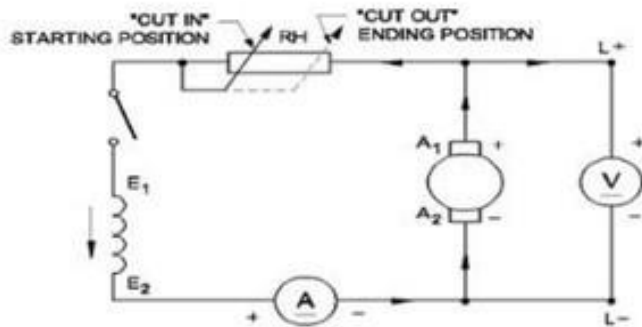
- (A) Petrol
- (B) Diesel
- (C) Varnish
- (D) Enamel paint.

Answer-C

108- Which type of output transformer is used in automatic voltage stabilizer?

- (A) Ring core type transformer
- (B) Static transformer
- (C) Auto transformer
- (D) Ferrite core type transformer. Answer-C

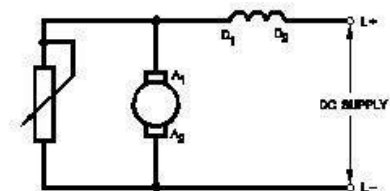
109- What is the name of the generator as shown in the circuit?



- (A) DC shunt generator
- (B) DC compound generator
- (C) DC series generator
- (D) Separately excited DC generator. Answer-A

110- What is the name of the speed control method of DC motor as shown in the figure?

- (A) Field tapping method
- (B) Voltage control method
- (C) Armature diverter method
- (D) Field diverter method



Answer-C

111- Why the hysteresis motor is suitable for sound recording instruments?

- (A) Noiseless operation
- (B) Less error operation
- (C) High efficiency
- (D) Small in size

Answer-A

112- Which energy is converted into electrical energy by the generator?

- (A) Chemical
- (B) Mechanical

(C) Kinetic

(D) Heat

Answer-B

113- How many number of parallel paths are in a wave wounded 6 pole DC machine?

(A) 8

(B) 6

(C) 2

(D) 4

Answer-C

114- Which electronic circuit generates A.C signal without Input?

(A) Filter circuit

(B) Oscillator circuit

(C) Amplifier circuit

(D) Rectifier circuit

Answer-B

115- Which type of motor is used for small table fan?

(A) Shaded pole motor

(B) Universal motor

(C) Capacitor start capacitor run motor

(D) Repulsion motor

Answer-A

116- When as the 3 lamps become dark in the dark lamp method of parallel operation of two alternators?

(A) Terminal voltages are equal

(B) Frequency are same in both alternator

(C) Voltage and power rating are equal

(D) Voltage and frequency are equal

Answer-D

117- Why sequential control of motors are required in an Industrial application?

(A) To reduce power consumption

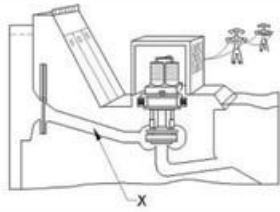
(B) To share more loads

(C) To increase the accuracy of operation

(D) To minimise the operating cost

Answer-C

118- What is the name of the part of hydro power plant marked as "X" as shown in the figure?



- (A) Turbine
- (B) Control gate
- (C) Penstock
- (D) Intake

Answer-C

119- Which transformer is used in stepped voltage stabilizer?

- (A) Auto transformer
- (B) Step up transformer
- (C) Isolation transformer
- (D) Air core transformer

Answer-A

120- Why negative feedback is required in amplifier circuits?

- (A) To increase the output voltage gain
- (B) To reduce the distortion
- (C) To increase the output current gain
- (D) To increase the amplification factor

Answer-B

121- Which type of voltage is Induced dynamically in a D.C generator?

- (A) Alternating voltage
- (B) Direct current voltage
- (C) Pulsating voltage
- (D) Oscillating voltage

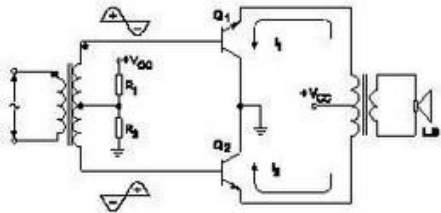
Answer-A

122- How does the magnetic flux of the field system completed the circuit in a generator?

- (A) Through the field coil and field core
- (B) Through the laminated pole core
- (C) Through the armature winding and armature core
- (D) Through the field core, armature core and yoke

Answer-D

123- What is the name of amplifier as shown in the figure?



- (A) Common collector amplifier
- (B) Class AB push pull amplifier
- (C) Common emitter amplifier
- (D) Class B push pull amplifier

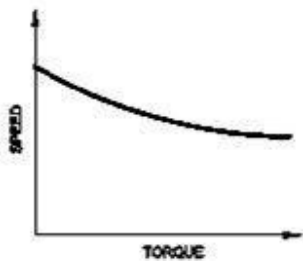
Answer-D

124- What is the purpose of using rotor resistance starter to start 3 phase slip ring Induction motor?

- (A) Reduce the rotor voltage
- (B) Increase the rotor current
- (C) Increase the starting torque
- (D) Reduce the power loss

Answer-C

125- Which motor has this characteristic curve as shown in the figure?

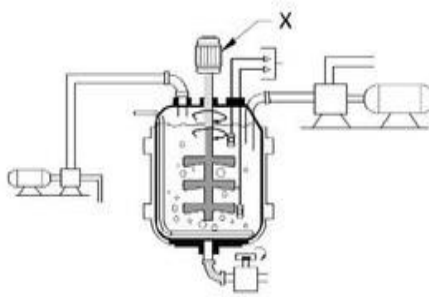


- (A) Cumulative compound motor
- (B) Series motor
- (C) Differential compound motor
- (D) Shunt motor

Answer-A

126- What is the name of the part marked as "X" In Industrial agitator system as shown in the figure?

- (A) Discharge pump
- (B) Feed pump
- (C) Agitator tank
- (D) Agitator motor



Answer-D

127- Which type of line insulator is used at the dead ends of the H.T overhead lines?

- (A) Pin Insulator
- (B) Disc Insulator
- (C) Stay Insulator
- (D) Post Insulator

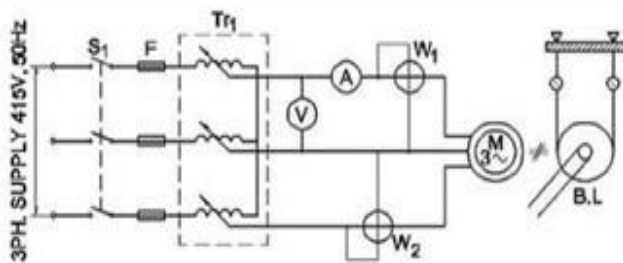
Answer-B

128- Which is proportional to the torque in D.C motor?

- (A) Back e.m.f
- (B) Armature current
- (C) Terminal voltage
- (D) Field current

Answer-B

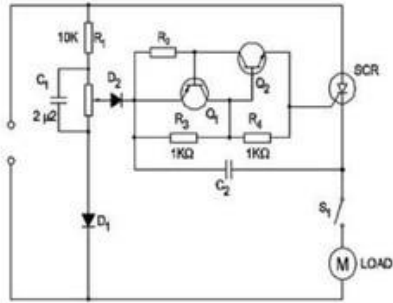
129- What is the name of the test as shown in the circuit?



- (A) Blocked rotor test
- (B) Open circuit test
- (C) No load test
- (D) Polarity test

Answer-A

130- What is the name of the circuit as shown in the diagram?



- (A) Speed control of universal motor
- (B) Speed control of repulsion motor
- (C) Speed control of permanent capacitor motor
- (D) Speed control of shaded pole motor

Answer-A

131- What is the function of the timer in automatic star delta starter?

- (A) Switch OFF at preset time
- (B) Switch ON at preset time
- (C) Change from star to delta
- (D) Trip at over load

Answer-C

132- Which is a passive component?

- (A) Capacitor
- (B) Diode
- (C) Diac
- (D) Transistor

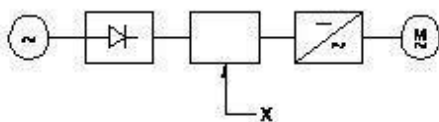
Answer-A

133- Calculate the phase displacement in terms of slots for a 3 phase, 36 slots, 12 coils, 4 pole stator winding?

- (A) 3 slots
- (B) 4 slots
- (C) 5 slots
- (D) 6 slots

Answer-D

134- What is the name of the component marked as 'X' in the block diagram of AC drive as shown in the figure?



- (A) D.C bus
- (B) A.C motor

(C) Rectifier

(D) Inverter

Answer-A

135- Which type of relay is used in both A.C and D.C supply?

(A) Clapper-type armature relay

(B) Thermal relay

(C) Impulse relay

(D) Reed relay

Answer-C

136- Which DC load is represented by the DC4 standard duty cycle of contactors?

(A) Starting and stopping of series motor

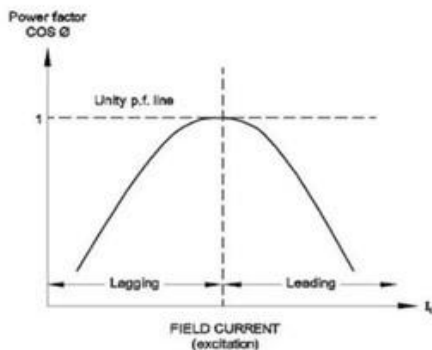
(B) Starting and stopping of shunt motor with inching and braking

(C) Resistive loads except motor loads

(D) Starting and stopping of shunt motor

Answer-A

136- What is the name of curve of the synchronous motor as shown in the figure?



(A) Load characteristics curve

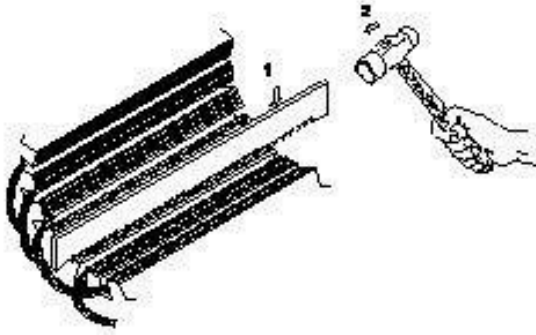
(B) V curve V

(C) Inverse 'V' curve

(D) No load characteristics curve

Answer-C

137- What is the operation in rewinding process?

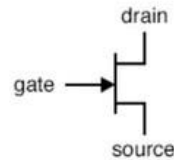


- (A) Removing of wedges
- (B) Cutting of winding wire
- (C) Removing of winding
- (D) Cleaning of slots

Answer-A

138- What is the name of the symbol as shown in the figure?

- (A) Diac
- (B) N' channel FET
- (C) Triac
- (D) P' channel FET.



Answer-B

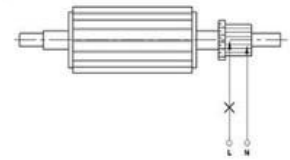
139- Which type of starter is used to start and run the 3 phase slip ring induction motor?

- (A) Rotor rheostat starter
- (B) Direct on-line starter
- (C) Manual star-delta starter
- (D) Auto transformer starter

Answer-A

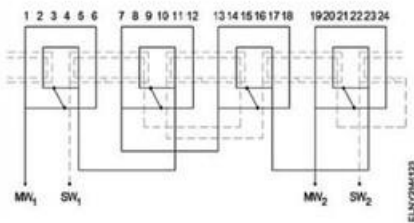
140- What is the name of the test as shown in the figure?

- (A) Shorted commutator test
- (B) Drop test
- (C) Grounded commutator test
- (D) Open circuit test



Answer-A

141- What is the name of the winding as shown in the figure?



- (A) Mesh shaped coil winding
- (B) Basket winding
- (C) Concentric coil winding
- (D) Diamond mesh shaped coil winding. Answer-C

142- What is the use of time-base control switch or knob in the CRO?

- (A) Select input signal voltage
- (B) Select intensity of the beam
- (C) Select sweep speed
- (D) Select input voltage range

Answer-C

143- Which fuel is available in plenty in India for power generation?

- (A) Diesel
- (B) Gas oil
- (C) Gasoline
- (D) Coal Answer-D

144- Which is the function of an inverter?

- (A) Converts D.C voltage into higher D.C voltage
- (B) Converts A.C voltage into D.C voltage
- (C) Converts D.C voltage into A.C voltage
- (D) Converts A.C voltage into higher A.C voltage

Answer-C

145- What is the purpose of PROG/DATA button in BOP of AC drive?

- (A) To store the entered data and show the factory stored data
- (B) To display the direction of rotation forward / REV
- (C) To display the values of the frequency and current
- (D) To change the parameter setting. Answer-A

146- Which type of insulating material is selected for binding the coils and over hangs?

- (A) Cotton sleeves

- (B) Empire sleeves
- (C) Terylene thread
- (D) Fibre glass tape. Answer-C

147- How the direction of rotation of a permanent capacitor motor is to be changed?

- (A) By interchanging the capacitor terminal
- (B) By interchanging the auxiliary winding terminal
- (C) By changing the rotor position
- (D) By interchanging the supply terminal

Answer-B

148- Which speed is called synchronous speed in 3 phase induction motor?

- (A) Full load speed
- (B) Rotating magnetic field speed
- (C) Relative speed between stator and rotor
- (D) No load speed

Answer-B

149- Which are the two points that the brush contact resistance measured in D.C machines?

- (A) Resistance between the brush and armature
- (B) Resistance between the opposite brushes
- (C) Resistance between the brush and brush holder
- (D) Resistance between the brush and commutator

Answer-D

150- What is the voltage regulation in percentage if the load is removed from an alternator, the voltage rises from 480V to 660V.

- (A) 37.5 %
- (B) 27.2%
- (C) 32.5%
- (D) 38.5%

Answer-A

151- Which term refers that the mass of a substance liberated from an electrolyte by one coulomb of electricity?

- (A) Electro plating
 - (B) Electro copying
 - (C) Electro chemical equivalent
 - (D) Electrolysis
- Answer-C

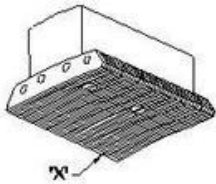
152- Which circuit breaker is installed along with wiring circuit against leakage current protection?

- (A) ELCB (B) OCB (C) MCB (D) MCCB
- Answer-A

153- Calculate the percentage slip in a 3 phase induction motor having 6 poles with a frequency of 50 Hertz running with the actual speed of 960 rpm?

- (A) 4% (B) 5% (C) 2% (D) 3%
- Answer-A

154- What is the part name of the DC generator marked 'X' in DC generator as shown in the figure?



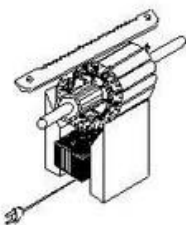
- (A) Pole core
- (B) Yoke
- (C) Pole coil
- (D) Pole shoe

Answer-D

155- Which is the correct sequence operation of key button in BOP of AC drive to change the direction of rotation?

- (A) Press OFF → ON → REV
 - (B) Press ON → REV → OFF → ON
 - (C) Press ON → REV → OFF → ON
 - (D) Press ON → OFF → REV → ON
- Answer-D

156- Which type of test is illustrated for the armature after rewind?



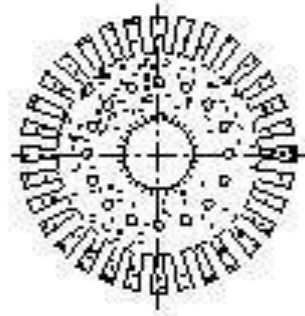
- (A) Grounded coil test
- (B) Shorted coil test
- (C) Open coil test

(D) Voltage drop test

Answer- B

157- What is the name of the part of DC generator as shown in the figure?

- (A) Pole shoe lamination
- (B) Armature core lamination
- (C) Commutator segment
- (D) Side endplates



Answer-B

158-

Which speed control method is used in food mixture motors?

- (A) Series field tapping method
- (B) Field diverter control method
- (C) Voltage control method
- (D) Armature diverter method

Answer-A

159- What is the characteristic property of base material in a transistor?

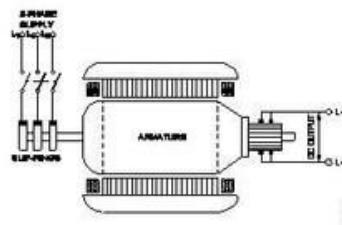
- (A) Heavily doped and very thin
 - (B) Lightly doped and very thin
 - (C) Lightly doped and very larger
 - (D) Heavily doped and very larger
- . Answer-B

160- What is the purpose of thermal over load relay in control panel? (

- A) Switching ON/OFF the circuit
 - (B) Protect the motor from over loading
 - (C) Protect the circuit from earth fault
 - (D) Control the circuit based on time delay
- Answer-B

161- What is the name of the converter as shown in the figure?

- (A) Motor-Generator set
 - (B) Mercury arc rectifier
 - (C) Rotary converter
 - (D) Metal rectifier.
- Answer-C



162- Which electric lines connect the substation to distributors in distribution system?

(A) Distributors

(B) Feeders

(C) Service mains

(D) Service lines

Answer-B

163- Which method of speed control can give two or more fixed synchronous speeds in the 3 phase motor?

(A) By changing the applied voltage

(B) By changing applied frequency

(C) By rotor rheostat control

(D) By changing the number of stator poles. Answer-D

164- Which method is applied to control the speed of 3 phase squirrel cage induction motor using a slip ring induction motor?

(A) Changing applied frequency

(B) Cascade operation

(C) Changing the number of poles

(D) Changing applied voltage. Answer-B

165- What is the full form of UPS?

(A) Universal Power Supply

(B) Unregulated Power Supply

(C) Uninterrupted Power Supply

(D) Uniform Power Supply

Answer-C

166- How the opposite polarity of adjacent poles of a 4 pole DC motor is obtained?

(A) By increasing the number of turns in coil

(B) By decreasing the number of turns in coil

(C) By making the current flow in opposite direction

(D) By making the current flow in same direction

Answer-C

167- Which type of winding wire is used to wind submersible pump motors?

(A) PVC covered type

(B) Terylene thread type

(C) Double cotton covered type

(D) Super enamelled type

Answer-A

168- What is the advantage of using rotating field type of ac alternator?

- (A) Easy to dissipate the heat during running
- (B) Two slip rings only required irrespective of No. of phases
- (C) Easy to connect the load with alternator

(D) Easy to locate the faults in the field. Answer-B

169- How the interpoles are connected in a DC generator?

- (A) In series with armature
- (B) In series with shunt field
- (C) In parallel with shunt field
- (D) In parallel with armature

Answer-A

170- Which device is avoided in the panel board assembly?

- (A) Push button switch
- (B) Isolating switch
- (C) Indicating lamp
- (D) Sensors

Answer-D

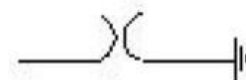
171- Which type of load is protected by 'G' series MCB?

- (A) Geysers
- (B) General lighting systems
- (C) Ovens
- (D) Air conditioners

Answer-D

172- What is the name of the symbol as shown in the figure?

- (A) Earth switch (ES)
- (B) Lightning Arrester (LA)
- (C) Circuit Breaker (CB)
- (D) Coupling Capacitor (CC)



Answer-B

173- What is the output DC voltage in half wave rectifier, if the input AC voltage is 24 volt?

- (A) 9.6 Volt
- (B) 10.8 Volt

- (C) 12 Volt
- (D) 24 Volt

Answer-B

174- What is the full form of PWM?

- (A) Phase Width Modulation
- (B) Pulse Wide Modulation
- (C) Pulse Width Modulation
- (D) Phase Wide Modulation

Answer-C

175- Which loss is determined by the no load test of 3 phase induction motor?

- (A) Copper loss
- (B) Windage loss
- (C) Friction loss
- (D) Iron loss. Answer-D

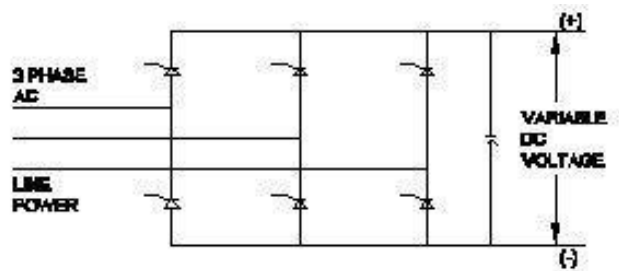
176- What is the main use of A.C drive?

- (A) Interlocking system in industries
- (B) High starting torque
- (C) Control stepless speed in motors
- (D) Group drive motors

Answer-C

177- What is the name of the converter as shown in the circuit?

- (A) Silicon controlled rectifier
- (B) Metal rectifier
- (C) Rotary converter
- (D) Mercury arc rectifier



Answer-A

178- Which type of DC generator is used for electroplating process?

- (A) Over Compounded Cumulative generator
- (B) Shunt generator
- (C) Series generator
- (D) Differential compound generator. Answer-B

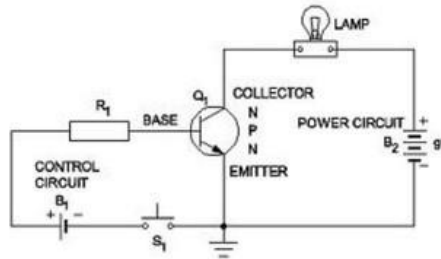
179- Which formula is used to calculate the speed of DC motor?

- (A) $N = K * (E_b \Phi) / (120)$
- (B) $N = K * (E_b / \Phi)$
- (C) $N = K * (E_b \Phi) / 60$
- (D) $N = K * \Phi / E_b$

Answer-B

180- What is the type of function in the transistor circuit as shown in the circuit?

- (A) Modulation
- (B) Amplification
- (C) Oscillation
- (D) Switching



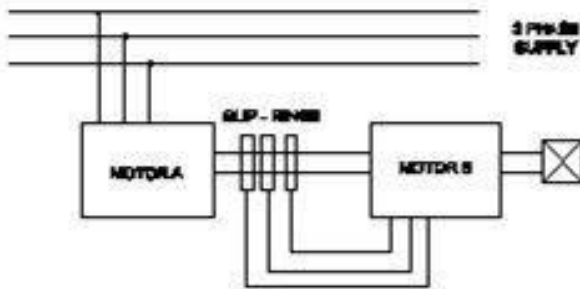
Answer-D

181- Which type of D.C motor is used for constant speed drives?

- (A) Differential long shunt compound motor
- (B) Differential short shunt compound motor
- (C) DC shunt motor
- (D) DC series motor

Answer-C

182- What is the speed control method of 3 phase induction motor?



- (A) Injecting emf in rotor circuit method
 - (B) Rotor rheostat control method
 - (C) Changing applied voltage method
 - (D) Cascade operation method.
- Answer-D

183- What is the advantages of stepper motor?

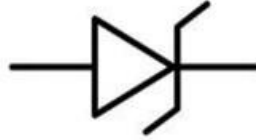
- (A) Resonance occurs
- (B) Rotor has no teeth
- (C) Can run at very high speed

(D) Can run at very low speed

Answer-D

184- What is the name of the symbol as shown in the figure?

- (A) Zener diode
- (B) Photo conductive diode
- (C) Light emitting diode
- (D) Diode



Answer-A

185- Which supply indicates by the colour of colour exhibited on Red, Blue and Black?

- (A) Apparatus AC system 3 phase
- (B) Supply DC 3 wire system
- (C) Supply AC system 3 phase
- (D) Single phase AC system

Answer-B

186- Which device is controlling the operations in the sequential control systems?

- (A) Timer
- (B) Control transformer
- (C) Relays
- (D) Contactor

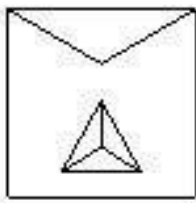
Answer-A

187- What is the purpose of JOG key in control panel of D.C drive?

- (A) Restart the motor
- (B) Stop the motor
- (C) Inching operation
- (D) Reverse the direction of motor.

Answer-C

188- What is the name of the starter symbol as shown in the figure?

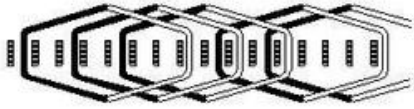


- (A) Direct on-line starter
- (B) Auto transformer starter
- (C) Star delta starter

(D) Rheostatic starter

Answer-C

189- What is the type of A.C motor stator winding as shown in the figure?



- (A) Diamond coil winding
- (B) Involute coil winding
- (C) Double layer basket winding
- (D) Single layer basket winding

Answer-D

190- What is the name of the substation that all equipment of substation is installed within the station building?

- (A) Outdoor substation
 - (B) Plinth mounted substation
 - (C) Indoor substation
 - (D) Pole mounted substation
- Answer-C

191- What is IGBT in VF drive?

- (A) D.C bus switching device
 - (B) Voltage regulator switching device
 - (C) Field supply switching device
 - (D) Inverter switching device.
- Answer-D

192- Which application requires only DC?

- (A) Stepping up of voltage
- (B) Electroplating
- (C) Operating Induction motor
- (D) Operating repulsion motor

Answer-B

193- What is the advantage of AC drive compared to DC drive?

- (A) Wide and smooth speed control
- (B) Power circuit and control circuits are complex
- (C) Installation and running cost is less
- (D) Requires more space

Answer-C

194- Which speed control method is applied to obtain both below normal and above normal speed in DC motor?

- (A) Armature control method
- (B) Tapped field speed control method
- (C) Field control method
- (D) Ward Leonard speed control method

Answer-D

195- What is the input current of a 2hp single phase motor, 240V at 70 percentage efficiency and 0.8 power factor?

- (A) 11 amp
- (B) 6.95 Amp
- (C) 13.52 Amp
- (D) 17.68 Amp Answer-A

196- Which loss is called as copper loss?

- (A) Windage loss
- (B) Variable loss
- (C) Constant loss
- (D) Friction loss

Answer-B

197- Which is the conventional power generation?

- (A) Solar power generation
- (B) Wind power generation
- (C) Tidal power generation
- (D) Thermal power generation

Answer-D

198- Which method of speed control offers the speed below the rated speed of DC series motor?

- (A) Tapped field method
- (B) Connecting additional winding in series with field
- (C) Armature diverter method
- (D) Field diverter method

Answer-C

199- Which amplifier produce a given gain with the minimum of distortion?

- (A) Common base amplifier
- (B) R - C coupled amplifier
- (C) Small signal amplifier
- (D) Voltage amplifier

Answer-D

200- What is the formula for dynamically induced emf?

- (A) BL sine volts
- (B) BLV cos θ volts
- (C) BLV volts
- (D) BLV sine volts

Answer-D

201- What will be the speed of a 4 poles alternator supplies the frequency of 50 Hz at the rated voltage?

- (A) 3000 rpm
- (B) 1500 rpm
- (C) 1000 rpm
- (D) 4500 rpm

Answer-B

202- What is the relation between the torque and the slip of an A.C induction motor?

- (A) Slip constant if torque decreases
- (B) Slip increases if torque decreases
- (C) Slip increases if torque increases
- (D) Slip decreases if torque increases

Answer-C

203- Which transformer is used in servo voltage stabilizer?

- (A) Step up transformer
- (B) Constant voltage transformer
- (C) Toroidal auto transformer
- (D) Step down transformer

Answer-C

204- What is the purpose of using rotor resistance starter to start 3 phase slip ring induction motor?

- (A) Reduce the rotor voltage
- (B) Increase the rotor current

- (C) Reduce the power loss
- (D) Increase the starting torque

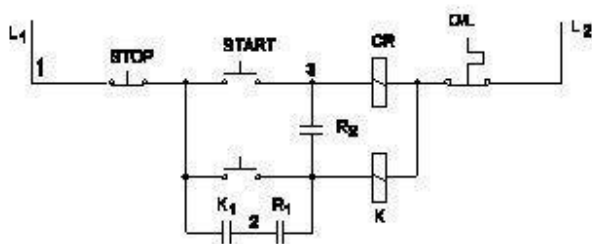
Answer-D

205- Which is the demerit of IGBT?

- (A) Static charge problem
- (B) Flat temperature co-efficient
- (C) On-state losses are reduce
- (D) High switching frequency.

Answer-A

206- Which operation the control circuit is used?



- (A) Sequential control
- (B) Remote control
- (C) Inching
- (D) Forward and reverse

Answer-C

207- What is the name of the 3 phase motor winding, if the coil pitch is less than pole pitch?

- (A) Long chorded winding
- (B) Full pitch winding
- (C) Whole coil winding
- (D) Short chorded winding

Answer-D

208- Which method of speed control offers the speed below the rated speed of DC shunt motor?

- (A) Connecting additional resistance in series with field
- (B) Field control method
- (C) Armature control method
- (D) Connecting additional winding in series with field

Answer-C

209- What is the name of winding, if coil pitch is less than pole pitch?

- (A) Full pitch winding
- (B) Long chorded winding
- (C) Over pitch winding
- (D) Short chorded winding. Answer-D

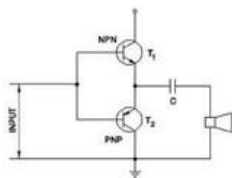
210- What is the name of the wiring accessory used in control panel wiring as shown in the figure?



- (A) G channel
- (B) Race ways
- (C) DIN rails
- (D) Grommets

Answer-C

211- What is the name of the amplifier as shown in the circuit?

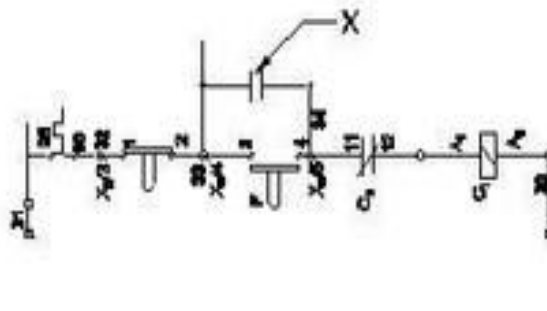


- (A) Power amplifier
- (B) Current amplifier
- (C) Small signal amplifier
- (D) Voltage amplifier

Answer-A

212- What is the name of the device marked as 'X' as shown in the figure?

- (A) Main contact
- (B) Start button
- (C) Auxiliary contact
- (D) Stop button



Answer-C

213- Which cable ties are used to bunch the wires?

used to

- (A) Silk ties
- (B) P.V.C ties
- (C) Nylon ties
- (D) Cotton ties. Answer-C

214- Why it is better to change the direction of armature current to change the direction of rotation of DC compound motor?

- (A) To maintain the motor characteristics
- (B) To increase the output power
- (C) To increase the rated speed
- (D) To increase the efficiency

Answer-A

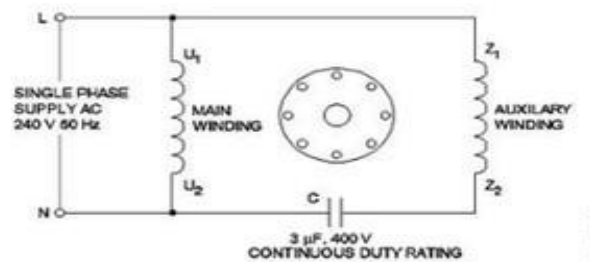
215- What is the name of the part of DC generator as shown in the figure?



- (A) Yoke (or) frame
- (B) Stator
- (C) Pole shoes
- (D) Pole core

Answer-A

216- What is the name of the single phase motor as shown in the diagram?



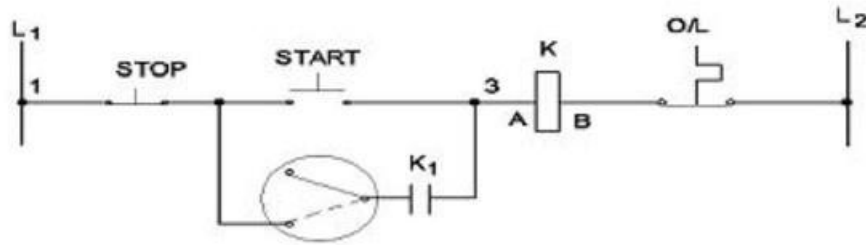
- (A) Resistance start induction run motor
- (B) Capacitor start capacitor run motor
- (C) Permanent capacitor motor
- (D) Capacitor start induction run motor

Answer-C

217- Why the long chord winding is avoided in AC motors?

- (A) Low copper loss
- (B) Low cost
- (C) Less heat dissipation
- (D) More winding wire required. Answer-D

218- What is the name of the control circuit as shown in the figure?



- (A) Inching control circuit with push motor
- (B) Remote control circuit
- (C) Jogging control circuit with selector switch
- (D) Jog control using a relay

Answer-C

219-What is the output voltage if the centre tap of the transformer is open circuited in a full wave rectifier circuit?

- (A) Zero voltage
- (B) Half of the rated output
- (C) One fourth of rated output
- (D) Full rated output

Answer-A

220-Why the A.C drives are better suited for high speed operation?

- (A) No brushes and commutation
- (B) Having lighter gauge winding
- (C) High starting torque
- (D) Robust in construction

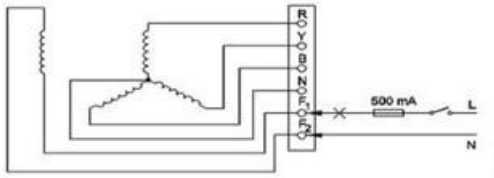
Answer-A

221-Why D.C supply is necessary for synchronous motor operation?

- (A) Run the motor with overload
- (B) Run the motor at synchronous speed
- (C) Reduce the losses
- (D) Start the motor initially

Answer-B

222- Which test is conducted in an alternator as shown in the diagram?



- (A) Continuity test of the main winding
- (B) Insulation test between the field winding and frame
- (C) Continuity test of the field winding
- (D) Insulation test between the main winding and frame

Answer-C

223- Which insulation is used for cuffing in AC winding?

- (A) Fabric based adhesive tape
- (B) Empire fiber glass tape
- (C) Fibre glass tape
- (D) Leatheroid paper. Answer-C

224- What is the purpose of using thermal relay in addition to fuse in A.C motor circuit?

- (A) Protects against continuous over loading
- (B) Protect from heavy earth fault
- (C) Protect against dead short circuit
- (D) Protect against high voltage

Answer-A

225- Why the DC generators are losing their residual magnetism?

- (A) Running with outload continuously
- (B) Change of direction of rotation very often
- (C) Flashing of field
- (D) Continuous running without break. Answer-B

226- What is the formula to calculate the armature current taken by the D.C shunt motor?

- (A) $I_a = E_b / R_a$ (C) $I_a = (V + E_b) / R_a$
- (B) $I_a = V / R_a$ (D) $I_a = (V - E_b) / R_a$

Answer-D

227- Why the terminal voltage of the DC shunt generator decreases if the load increases?

- (A) Due to increase in shunt field inductance
- (B) Due to decrease in armature resistance
- (C) Because of armature reaction effect

(D) Because of decrease in brush voltage drop

Answer-C

228- Which is the main application of synchronous motor?

- (A) AC to DC converter
- (B) Electric traction
- (C) Power factor correction device
- (D) Elevators

Answer-C

229- How the control circuit voltage for a contactor is selected?

- (A) As per no volt coil rating
- (B) As per rated current
- (C) As per supply voltage
- (D) As per the type of supply

Answer-A

230- Which insulating material belongs to class 'B' insulation?

- (A) Leatheroid paper
- (B) Cotton
- (C) Bamboo
- (D) Fiberglass

Answer-D

231- Which turbine is used for high head in the hydro power plant?

- (A) Reaction turbines
- (B) Kaplan turbines
- (C) Francis turbines
- (D) Impulse turbines

Answer-D

232- Which control system consumes very low power for motion control in AC and DC motors?

- (A) Field control
- (B) Drives control
- (C) Voltage control
- (D) Armature control

Answer-B

233- What is the purpose of DIN-rail used in the control panel wiring?

- (A) Mounting the control accessories without screws

- (B) It provides a path way for electrical wiring
- (C) Mounting the double deck terminal connectors
- (D) Mounting the control accessories using screws

Answer-A

234- Where D.C compound motors are preferred?

- (A) Constant speed requirements
- (B) High starting torque requirements
- (C) Constant load requirements
- (D) Constant speed under varying load requirements

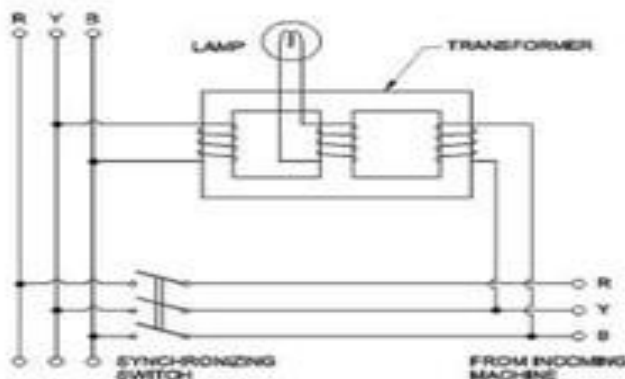
Answer-D

235- What is the name of the equipment that provides D.C to the rotor of alternator?

- (A) Inverter
- (B) Exciter
- (C) Synchroniser
- (D) Converter

Answer-B

236- Which method of the parallel operation of alternator is shown in the diagram?



- (A) Moving iron type synchroscope method
- (B) Dark & Bright lamp method
- (C) Dark lamp method
- (D) Western type synchroscope method

Answer-D

237- Which method is used to control the speed of 3 phase induction motor from stator side?

- (A) By changing the applied frequency
- (B) By injecting frequency in rotor circuit
- (C) By injecting emf in rotor circuit
- (D) By rotor rheostat control

Answer-A

238-What is the name of the D.C generator according to the field as shown in the figure?

- (A) Differential compound generator
- (B) Cumulative compound generator
- (C) Series generator
- (D) Shunt generator



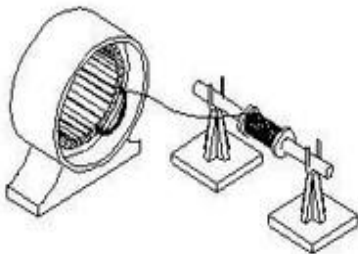
Answer-B

239-What is the purpose of output transformer in inverters?

- (A) Step down input AC
- (B) Step up AC from amplifier
- (C) Step down AC from amplifier
- (D) Step up input AC

Answer-B

240- Identify the type of rewinding process given below?



- (A) Hand winding
- (B) Machine winding
- (C) Skein winding
- (D) Former winding

Answer-A

241- Which type of sensing unit employed in drive system?

- (A) Speed sensing
- (B) Photovoltaic cell
- (C) Opto coupler
- (D) Resistance temperature detector

Answer-A

242- What is the reason of using shielded cable for connecting low signal circuits in D.C drives?

- (A) Easy for connection

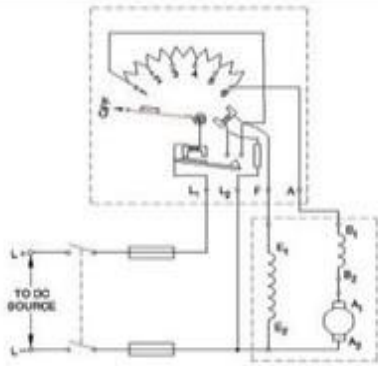
- (B) Eliminates the electrical interference
- (C) Good appearance
- (D) Protects from mechanical injuries

Answer-B

243- Which is the main application of SCR?

- (A) Oscillators
 - (B) Amplifier
 - (C) Multi vibrators
 - (D) Speed control of motors
- Answer-D

244- What happens if the starting resistance of four point starter opens while DC compound motor is running?



- (A) Runs at slow speed
 - (B) Runs at reverse direction
 - (C) Runs at very high speed
 - (D) Motor stopped.
- Answer-D

245- What refers coil in AC winding?

- (A) Number of turns under two similar poles
- (B) Number of turns connected in series
- (C) Number of turns under two dissimilar poles
- (D) Number of turns connected in parallel

Answer-B

246- Why slip ring induction motor is fitted with wound rotor?

- (A) To control the speed
- (B) To reduce the losses
- (C) To get high starting and running torque
- (D) To reduce the slip

Answer-C

247- Which is represented by the 'V' curve of the synchronous motor?

- (A) Relation between the armature current and field current
- (B) Relation between the applied voltage and load current
- (C) Relation between the load current and power factor
- (D) Relation between the field current and power factor

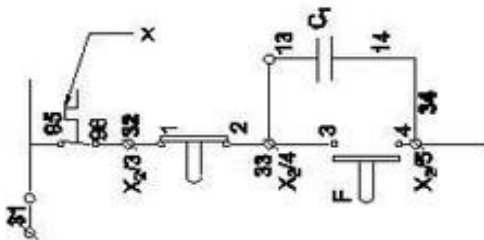
Answer-A

248- Which metal is used to make the pole core of large DC machine?

- (A) Stainless steel
- (B) Soft iron
- (C) Cast iron
- (D) Cast steel

Answer-D

249- What is the name of the device marked as 'X' in the circuit as shown in the figure?

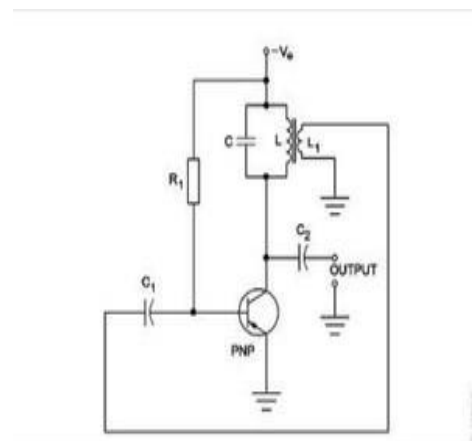


- (A) No volt coil
- (B) Stop button
- (C) Contactor
- (D) Over load relay trip

Answer-D

250- What is the purpose of connecting L1 through C1 to the transistor base as shown in the figure?

- (A) Provides DC supply
- (B) Provides negative feedback
- (C) Provides positive feed back
- (D) Provides transistor biasing voltage



Answer-C

251- What is the purpose of external source for passive sensors?

- (A) To generate signal
- (B) To generate heat
- (C) To generate pressure

(D) To generate light

Answer-A

252- What is the permissible temperature value of class 'F' insulation?

(A) 120°C (B) 105°C (C) 90°C (D) 155°C. Answer-D

253- Which is acts as a both inverter and converter?

- (A) Metal rectifier
- (B) Mercury arc rectifier
- (C) Synchronous converter
- (D) Semi conductor diode

Answer-C

254- Which is the demerit of 3 phase concentric winding?

- (A) A stepped former is required
- (B) Less cooling space is available
- (C) Less difficult to shape the coils uniformly
- (D) It is easy to make the end connection

Answer-A

255- Which is inversely proportional to the speed of DC motor?

- (A) Field flux
- (B) Armature resistance
- (C) Load current
- (D) Applied voltage

Answer-A

256- What is the reason for the DC generator fails to build up voltage?

- (A) Armature resistance is less
- (B) Prime mover is running at above rated speed
- (C) Field resistance is above the critical resistance
- (D) Field resistance is below the critical resistance

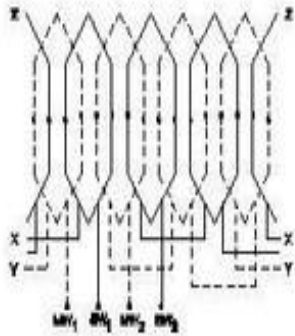
Answer-C

257- What is the reason for widened barrier in a reverse biased diode?

- (A) Minority carriers in two materials are neutralised
- (B) Electrons and holes are attracted towards supply terminals
- (C) Electron in N material is drifted to negative terminal
- (D) Holes in P material attracted to positive terminal

Answer-B

258- What is the name of the coil winding as shown in the figure?



- (A) Mesh shaped coil winding
- (B) Concentric coil winding
- (C) Distributed coil winding
- (D) Diamond mesh shaped coil winding

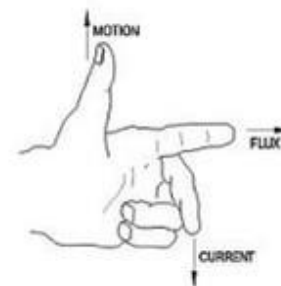
Answer-D

259- Which type of DC generator is used for long distance distribution lines?

- (A) Cumulative compound generator
- (B) Differential compound generator
- (C) Differential short shunt compound generator
- (D) Shunt generator. Answer-A

260- What is the name of rule as shown in figure?

- (A) Palm rule
- (B) Fleming's right hand rule
- (C) Thumb rule
- (D) Fleming's left hand rule



Answer-D

261- Which instrument is used to check short circuit faults in electronic circuit in voltage stabilizer?

- (A) Multimeter
- (B) Ohmmeter

(C) Voltmeter

(D) Ammeter

Answer-A

262- Which type of motor is used to provide high starting torque at variable speed?

(A) 3 Phase slipring induction motor

(B) 3 Phase single squirrel cage induction motor

(C) Permanent capacitor motor

(D) Universal motor

Answer-A

263- What is the condition for the maximum efficiency of a DC generator?

(A) Variable losses is equal to constant losses

(B) Variable losses is more than constant losses

(C) Eddy current loss is equal to hysteresis loss

(D) Variable losses is less than constant losses

Answer-A

264- Which rule is used to determine the direction of rotation of armature in D.C motor?

(A) Fleming's left hand rule

(B) Right hand grip rule

(C) Right hand palm rule

(D) Fleming's right hand rule. Answer-A

265- What is the use of PVC channel in a control panel wiring?

(A) Mounting relays

(B) Path way for electrical wiring and protection

(C) Mounting MCB

(D) Mounting double deck terminal contactor

Answer-B

266- What is the full form of "VFD"?

(A) Volume Frequency Drive

(B) Value Fixed Drive

(C) Voltage Frequency Drive

(D) Variable Frequency Drive

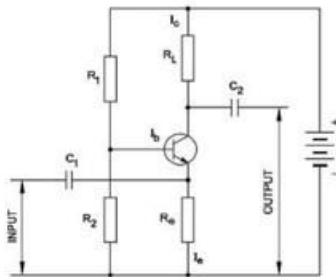
Answer-D

267- What is the insulation resistance between any two conductors in a medium voltage domestic installation as per IE rules?

- (A) More than one mega ohm
- (B) Zero
- (C) Less than one Mega ohms
- (D) Infinity

Answer-A

268- What is the type of amplifier circuit as shown in the diagram?



- (A) Common base amplifier
 - (B) Class B push pull amplifier
 - (C) Common emitter amplifier
 - (D) Common collector amplifier
- Answer-A

WORKSHOP CALCULATION & SCIENCE

1- What is the unit of strain?

(A) Kg/cm^2

(B) Newton/metre²

(C) Metre

(D) No unit

Answer-D

2- What is the formula for $(a-b)^2$?

(A) $a^2 - 2ab - b^2$

(B) $a^2 - 2ab + b^2$

(C) $-a^2 - 2ab - b^2$

(D) $a^2 + 2ab + b^2$

Answer-B

3- What is the expanded form of $(a+b)^2$?

(A) $a^2 - 2ab + b^2$

(B) $a^2 + 2ab - b^2$

(C) $a^2 + 2ab + b^2$

(D) $-a^2 - 2ab + b^2$

Answer-C

4- Which symbol is used to express change in length?

A- L

B- dL

C- l

D- e

Answer- B

5- Who prepares the cost of estimation?

A- Operator

B- Quality Inspector

C- Estimator

D- Draughts man

Answer- C

6- What is the formula for area of the circle?

A- $\pi r^2/2$

- B- πr^2
- C- $2\pi r$
- D- $\pi d/2$

Answer- B

7-What is the name of a booklet, the rates of various terms are indicated?

- A:Pricebank
- B: Price bunch
- C:Pricetag
- D: Price catalogue

Answer- D

8-Which authority publishes schedule of rates?

- A: Individual
- B: Corporate
- C: Partnership firm
- D:Government department

Answer- D

9- What is the purpose of a lubricant?

- A: To increase the pressure
- B:Toincreasefriction
- C: To reduce friction
- D: To reduce pressure

Answer- C

10- What is the value of $14x+3y+25x+2y$?

- A: $17x+27y$
- B: $16x+28y$
- C: $39x + 5y$
- D: $44xy$

Answer- C

11- Which is the formula for a^m / a^n ?

- A: a^{m+n}
- B: a^{m-n}
- C: $a^m \times a^n$
- D: $(a^m)^n$

Answer- B

12-How the profit/gain is expressed?

- A:₹
- B:\$
- C:%

D:*

Answer- C

13-Which hand book referred by machine engineer?

A- Parry's the orikal

B-CRC

C-Oxford Dictionary

D-Mark standard

Answer-D

14-How they earns is denoted in simple interest calculations?

A-P

B-I

C-n

D-r

Answer- C

15-What is the expanded form of S.P?

A- Selected Price

B-Special Price

C- Super Price

D- Selling Price

Answer- D

16-What are the various stages of heat treatment?

A-Heating, Cooling and Quenching

B-Quenching, Cooling and Heating

C-Soaking, Quenching and Cooling

D-Heating, Soaking and Quenching

Answer- D

17-What is the other term of pocket reference in engineering works?

A-Hand tool

B-Hand book

C- Good book

D-New book

Answer- B

18-Which one of the following geometrical shape's centre of gravity lies from its base is $\frac{1}{3}$ of its height?

A- Square

B-Rhombus

C-Triangle

D- Cone. Answer-C

19-Which is used to reduce the friction in machine parts?

A: Kerosene

B: Petrol

C:Water

D: Lubricants

Answer- D

20-What is denoted as 'I'?

A: Principal

B: Interest

C: Rate

D: Year

Answer- B

21-How the 'Principal' is denoted in simple interest calculation?

A: 'P'

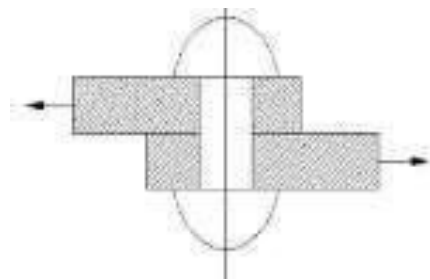
B:'I'

C:'R'

D: 'n'

Answer- A

22-Which type of stress?



A: Tensile stress

B: Compressive stress

C: Shear stress

D: Torsional stress

Answer- C

23-What is colour of a metal piece when heated to 250°C while doing the tempering process?

A: Blue

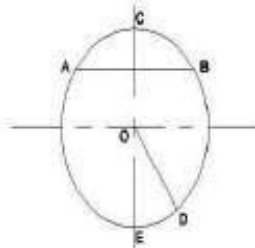
B: Brown

C: Purple

D: Pale

Answer- B

24-Which line is called as chord?



A : ED

B : AB

C : OD

D : OE

Answer- B

25: Which symbol is used to denote co-efficient of friction?

A: α (Alpha)

B: μ (Meu)

C: β (Beta)

D: γ (Gamma)

Answer- B

26: What is the direction of frictional force against a motional object?

A: Opposite to the object

B: Perpendicular to the object

C: Inclined to the object

D: Parallel to the object

Answer- A

27: What is the name of the structure formed, if a steel is heated for about 723°C?

A: Cementite

B: Austenite

C: Martensite

D: Ferrite

Answer- B

28: What is the direction of frictional force against a motional object?

- (A) Opposite to the object
- (B) Perpendicular to the object
- (C) Inclined to the object
- (D) Parallel to the object

Answer-A

29: What is the value of $a \times a^2 \times a^3 \times a^4$?

- (A) a^7
- (B) a^8
- (C) a^{10}
- (D) a^9

Answer-C

30: Which is the law of friction?

A: Friction force is independent over the area and shape of contacting Surfaces

B: Frictional force is inversely proportional to the normal reaction

C: Frictional force acts in the same direction of motion

D: Frictional force is not a dependent on nature of contacting surface

Answer-A

31- What is the other term of pocket reference in engineering works?

- A) Hand tool
- B) Hand book
- C) Good book
- D) New book

Answer: B

32- What is the value of $(a^5)^7$?

- A) a^{35}
- B) a^{12}
- C) a^{21}
- D) a^{22}

Answer: A

33- What is the use of engineering drawing?

- A) For estimation of material and execution of work
- B) For colourful appearance

- C) For reducing the cost
- D) For increasing the cost

Answer: A

34- What is the multiplication value of $5a^2b \times 8a^5b^3$?

- A) $40a^7b^4$
- B) $40a^4b^7$
- C) $40a^3b^2$
- D) $40a^2b^3$

Answer: A

35- What is the term used for the method of calculating various quantities and expenditure on a particular job or process?

- A) Estimation
- B) Drawing
- C) Specification
- D) Plan

Answer: A

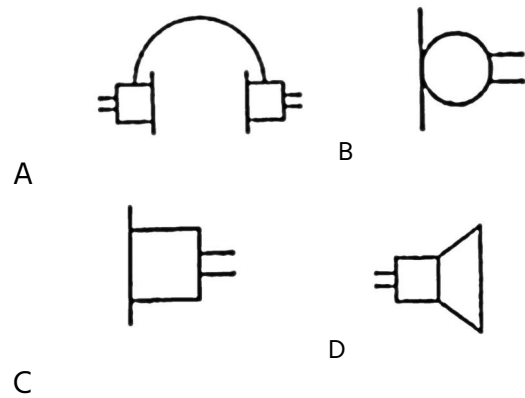
36- Which is the unit electrical power?

- (A) Volts
- (B) Watts
- (C) Ampere
- (D) Ohms

Answer-B

ENGINEERING DRAWING

1) Identify the symbol used for microphone(general) in electrical and electronic circuits.



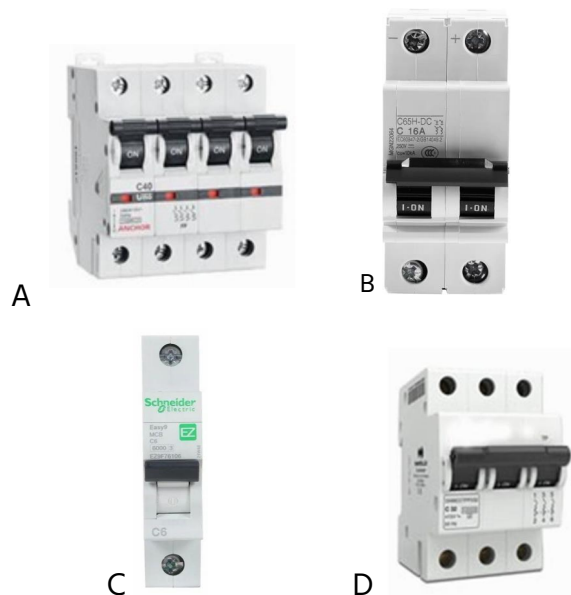
Answer- B

2) Which device is used to start and stop a motor?

- A. Slip ring B. Rotor
C. Stator D. Starter

Answer- D

3) Which is the single pole MCB?



Answer- c

4) Which part regulates the heat in automatic iron?

- A) Asbestos sheet
- B) Pressure plate
- C) Thermostatic switch
- D) Heating element

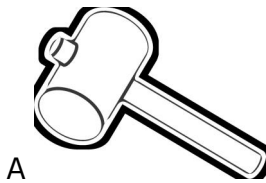
Answer- C

5) What is the name of the gate?



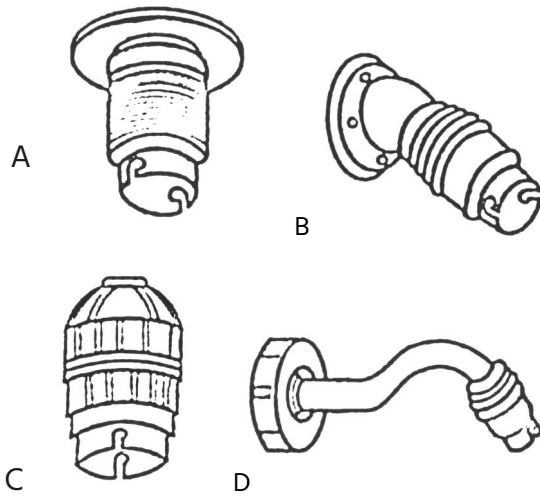
- A) NOT Gate
 - B) Ex-NOR Gate
 - C) AND Gate
 - D) OR Gate
- Answer- C

6) Which is ball peen hammer?



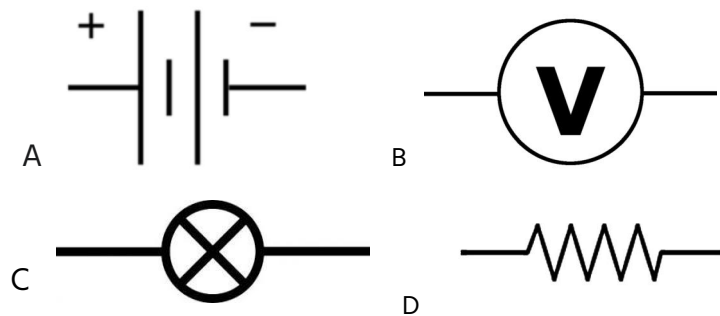
Answer- D

7) Identify the batten holder in the following picture.



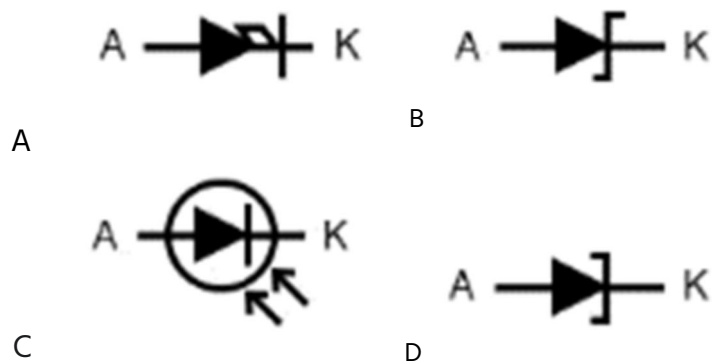
Answer- A

8) Identify the symbol of battery.



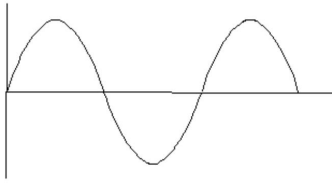
Answer-A

9) Which is photo diode?



Answer-C

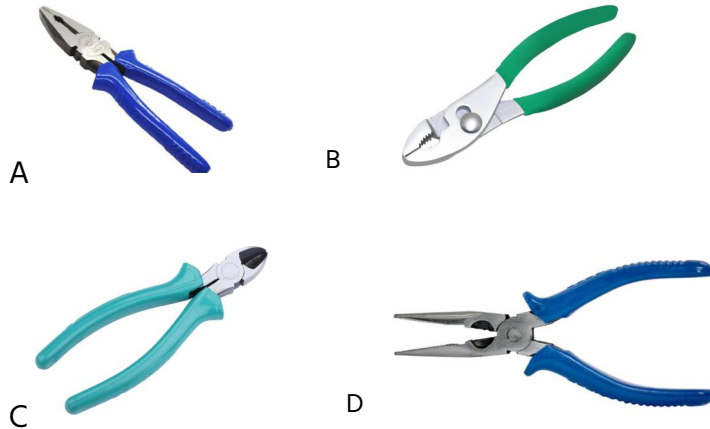
10) Identify the wave form.



- A) Saw-tooth wave
- B) Square wave
- C) Sine wave
- D) Triangle wave

Answer-C

11) Which is nose pliers?



Answer-D

12) Which is protective device?

- A) Fuse
- B) Resistor
- C) Capacitor
- D) Magnet

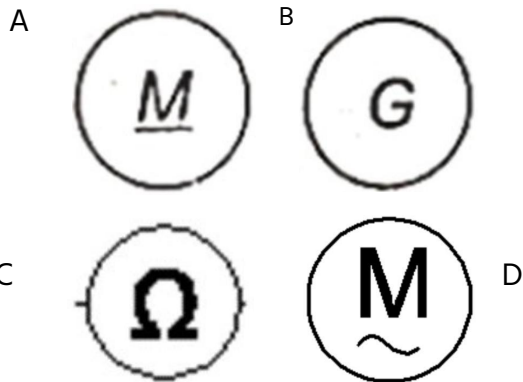
Answer-A

13) Voltage less than 250 volt is called_____.

- A) MT (Medium Tension)
- B) LT (Low Tension)
- C) EHT(Extra High Tension)
- D) HT (High Tension)

Answer-B

14) Which is a symbol of DC motor?



Answer-A

15) What is the material of line insulator?

- A) Aluminium
- B) Porcelain clay
- C) Copper
- D) Rubber

Answer-B

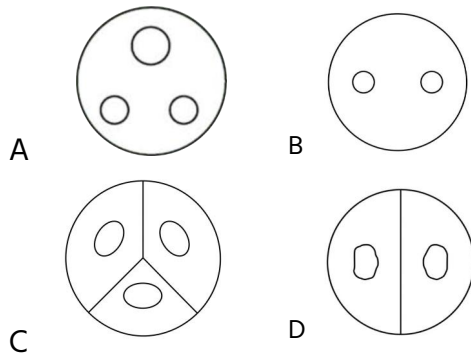
16) Identify the switch in the given picture.



- A) Toggle Switch
- B) Tumbler Switch
- C) Flux type switch
- D) Intermediate Switch

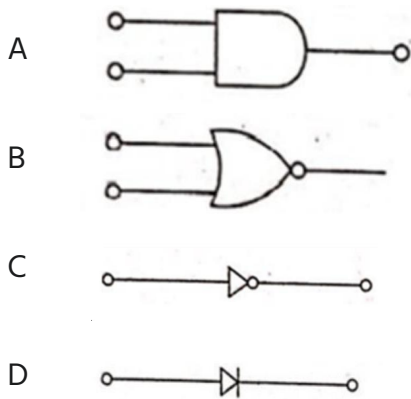
Answer-B

17) Identify the 3-pin socket.



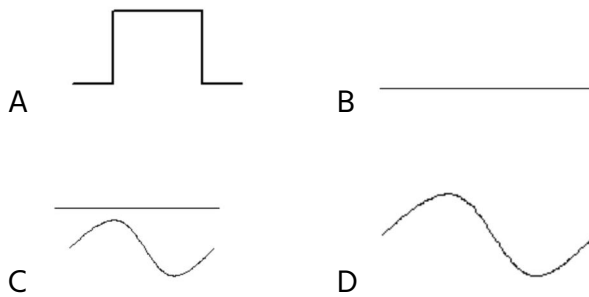
Answer-A

18) Which is the NOT gate in the following picture?



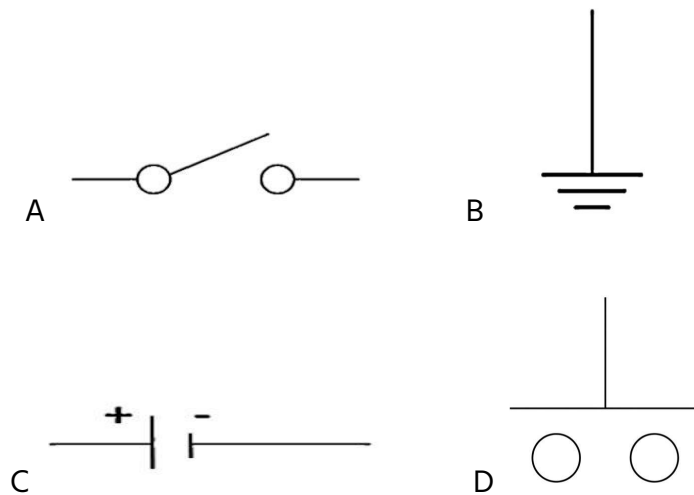
Answer-C

19) Identify the symbol for direct and alternating current.



Answer-C

20) Which is the symbol of earth?



Answer-B

21) Which of the following is AC ammeter?

(A)



(B)



(C)



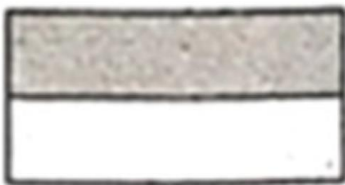
(D)



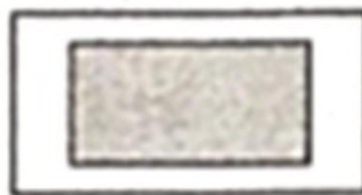
Answer-B

22) Choose the symbol for main fuse board without switches (P).

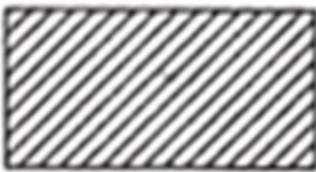
(A)



(B)



(C)

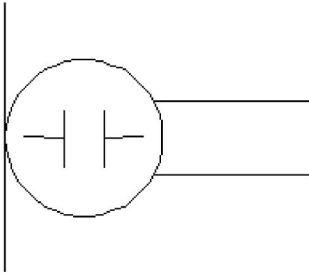


(D)



Answer-B

23) What is the name of the symbol?



- A) Condenser microphone
- B) Loud speaker
- C) Dynamic microphone
- D) Microphone

Answer-A

24) Which is the static machine that increase or decrease the AC voltage?

- A) A) Alternator
- B) Induction motor
- C) Generator
- D) Transformer

Answer-D

EMPLOYABILITY SKILLS

1- The activity of setting up a business or businesses, taking on financial risk in the hope of profit is called _____.

- (A) Entrepreneurship
- (B) Sales executive
- (C) Merchant
- (D) Bank manager

Answer- A

2- Complete the sentence with suitable describing words.

There is a _____ playground near our house.

- (A) beautiful
- (B) big
- (C) spacious
- (D) good

Answer- B

3- _____ are at the centre of any business.

- (A) Customers
- (B) Bank loan
- (C) Working capital
- (D) Licence

Answer- A

4- What will keep evolving by making jobs undergo changes?

- (A) Technology
- (B) Investment
- (C) Workforce
- (D) Time

Answer-A

5- Complete the sentence with suitable describing words.

There are _____ apartments in my neighbourhood.

- (A) expensive
- (B) good
- (C) beautiful

(D) spacious

Answer- D

6- What is the standard way in which computers connected wireless?

(A) ISP

(B) Wi-Fi

(C) WAN

(D) LAN **Answer- B**

7- _____ is a code of behaviour that is based on respect, values and professionalism.

(A) Education

(B) Workplace etiquette

(C) Experience

(D) Business

Answer-B

8- Full form of GPS is _____.

(A) Globe Pointing System

(B) Great Polar System

(C) Global Positioning System

(D) Global Planning System

Answer- C

9- Which is a regular, non-APP based Gig economy job opportunity?

(A) Swiggy

(B) Uber

(C) Home catering

(D) Dunzo

Answer- C

10- The word 'resume' comes from French and means _____.

(A) placement

(B) experience

(C) summary

(D) education

Answer- C

11- What are some advantages of informal communication at the workplace?

(A) Helps people work together better

(B) Makes things more official at work

- (C) Creates a strict environment at work
- (D) Makes people talk less

Answer- A

12- What type of resources one can find in the Skill India Digital Platform?

- (A) Financial services and government schemes
- (B) Only ebooks and reading materials
- (C) Only job listings
- (D) Courses, skill centers, job opportunities, and more

Answer- D

13- What is workplace etiquette?

- (A) Gossiping
- (B) Casual behaviour with colleagues
- (C) Everyday manners outside of work
- (D) Proper behaviour and workplace professionalism

Answer- D

14- Which one is a web browser?

- (A) Outlook express
- (B) Hot mail
- (C) Internet explorer
- (D) Face book

Answer- C

15- When a person joined a new company, he may be nervous using digital tablets provided at work. That time he shall

- (A) Keep an open mind and ask his coworkers to teach him.
- (B) Ask his coworkers to do all the digital work.
- (C) Quit his job.
- (D) Complain to his manager.

Answer- A

16- Which is a good way to handle when some of your team member made a mistake?

- (A) Blame the person who did the mistake
- (B) Discuss and find a way to solve it
- (C) Wait for someone else to solve it
- (D) Get angry and scold the team

Answer- B

17- One of the good workplace skills is _____.

- (A) Not reaching office on time.
- (B) Speak louder in phone.
- (C) Maintain a clean workspace.
- (D) Tap repeatedly on the desk.

Answer- C

18- How can you become as self-employed?

- (A) Thinking about to become as self-employed
- (B) Try your idea on a small scale, join relevant short term course
- (C) Work in a company
- (D) Joining MBA course MBA

Answer- B

19- While thinking about learning, what are the questions you can ask yourself?

- (A) It is very tough
- (B) It is very difficult for me to understand
- (C) Its waste of time
- (D) How can I learn and understand better?

Answer-D

20- If you want to apply for jobs through Naukri.com, what you will do?

- (A) Apply to all the jobs listed
- (B) Select all the cities where jobs are available
- (C) Match the skills with the job description
- (D) Ignore the job descriptions

Answer- C

21- What are some resource related problems in a workplace?

- (A) Electricity
- (B) Shortage of materials and space
- (C) More space for less machines
- (D) Less operators

Answer- B

22- As a machine operator, while working with your machining you find the machine is not working properly. What should you do?

- (A) Try to find the cause and remedies for the problem to solve it

- (B) Blame someone for the defect
- (C) Ignore it
- (D) Hide the machine

Answer- A

23- What are green jobs?

- (A) Jobs that conserve resources and help the environment
- (B) Jobs that harm the environment
- (C) Jobs that ignore waste separation and recycling
- (D) Jobs shared in green colours

Answer- A

24- Find the Entrepreneur from the given options.

- (A) Cabinet Secretary
- (B) Anand Mahindra
- (C) SBI CEO
- (D) RBI Governor

Answer- B

25- For career growth and _____, we need to build_____.

- (A) skills, bridges
- (B) sustainability, dams
- (C) skills, sustainability
- (D) sustainability, newskills

Answer- D

26- Fill up the blanks with suitable words so as to become a meaningful sentence.

The Principal called Manoj. The Principal asked _____ to show _____ hall ticket for the CTS Examination.

- (A) her,him
- (B) him,his
- (C) him,her
- (D) her,his

Answer-B

27- What does migrating for work mean?

- (A) Staying in the same place forwork
- (B) Working from home
- (C) Changing jobs with in the same city

(D) Moving to a different place to find a job

Answer-D

28- Which of the following are included in a resume?

(A) Contact information ,educational details, skills and work experience

(B) Childhood memories, dreams, and aspirations

(C) Daily routine, favorite movies, and vacation plans

(D) Hobbies, favorite foods, and personal interests

Answer-A

29- Someone plans to move to a different city for work, should_____

(A) Find how much it will cost to travel and live there; earn and save.

(B) Apply for loan in bank.

(C) Move to new place and search for job.

(D) Ask money from relatives and friends.

Answer-A

30- You are a life long learner if you_____

(A) Live for along time

(B) Join online courses

(C) Keep growing and adding to your knowledge

(D) Get a PhD

Answer-C

31- Which is an 'App' based Gig economy, helps people in part time job?

(A) Home catering

(B) Permanent employee

(C) Swiggy

(D) Independent contractor

Answer-C

32- What is the process of formally introducing oneself called?

(A) Seeking

(B) Hiring

(C) Self-introduction

(D) Decision

Answer-C

33- While presenting your business plan to potential investors, why is it important to actively listen to their questions and provide thoughtful answers?

(A) To show off your expertise

- (B) To understand the concerns of the investors and build their confidence in your plan
- (C) To avoid eye contact
- (D) To show your communication skills

Answer-B

34- Good practice for green mind set is _____

- (A) Separate and recycle waste
- (B) taking lot of printouts
- (C) using air conditioners all the time
- (D) keep lights on all the time

Answer-A

35- When a manufacturer trying to make a better school bag using design thinking. What would be the next step after understanding the students need in a bag?

- (A) Choose the colour of the bag
- (B) Plan different bag designs
- (C) Choose the material for the bag
- (D) Ask students to test the bags

Answer-B

36-Why is it good to think about what you learn?

- (A)It help store member and understand better.
- (B)It's a good time pass
- (C) It improves handwriting.
- (D)All are doing

Answer-A

37-What does a workplace look like after a pandemic like covid?

- (A) Empty space
- (B) Less production
- (C)Mix of work from home and office
- (D) Less employees

Answer-C

38-When a machine operator suddenly face a problem, and quickly finds another way to do the work is called as

- (A) Adaptability
- (B) Integrity
- (C) Sincerity
- (D) Honesty

Answer-A

39-While applying for a position as fitter, which of the following email subject lines would be the most suitable?

- (A) Fitter Job needed
- (B) Application for Fitter Position-[YourName]
- (C) Urgent Attention Needed
- (D) Applying for a new Job

Answer-B

40-One of the information's in an informal conversation with a co-worker is

- (A) asking about their experience.
- (B) asking about the office timing.
- (C) asking about their roles in the company.
- (D) asking about their house.

Answer-D

41-While working in a project , you understand that you did a mistake. What should you do?

- (A)Wait for some one else to find out your mistake
- (B) Blame team members for the mistake
- (C)Ignore the mistake and continue working
- (D) Tell your boss about the mistake

Answer-D

42-What does working well together mean?

- (A) Be friendly with all
- (B) Sharing ideas, listening, finding solutions together
- (C) Participate get-together
- (D) Not doing any mistakes

Answer-B

43- A person with high emotional intelligence has_____

- (A) physical strength
- (B) lot of positive qualities
- (C) ego
- (D) lot of negative qualities

Answer-B

44- If you come up with an idea to improve the work using design thinking. What must you do next?

- (A) Tell everyone about it
- (B) Write down his idea and keep it safe
- (C) Think of another idea
- (D) Apply and test if it works

Answer-D

45-Which of the following actions in a official meetings how appropriate workplace etiquette?

- (A) Keeping the phone on silent mode and actively participate in the discussion
- (B) Chatting with co-workers
- (C) Interrupt the speaker in meeting
- (D) Checking phone and respond to messages

Answer-A

46-If some one wants to apply bank loan for their business, their business plan should have_____

- (A) business profit details
- (B) have only the idea and name of the business
- (C) challenges about the business along with solutions
- (D) total cost of the business without any details

Answer-C

47- Which wireless technology standard used for exchanging data between fixed and mobile devices over short distance?

- (A) Router
- (B) Bluetooth
- (C) CD/DVD
- (D) Pendrive

Answer-B

48- While applying for a job, how to start an email to a company?

- (A) Write a short story about hobbies
- (B) Attach favorite photos
- (C) Begin with a clear subject line and a polite greeting
- (D) Start with a joke

Answer-C

49- A person always trying out new way store use the waste materials called as _____

- (A) Idea Person
- (B) Peacekeeper
- (C) Doer
- (D) Planner

Answer-A

50- A Beauty Parlor staff follows environment friendly actions by means of _____

- (A) using plastic gloves.
- (B) reusing the consumable items.
- (C) using non plastic materials, disposing wastes in an environment friendly way.
- (D) using plastic cups.

Answer-C

51-How can Instagram, linkedin, and YouTube help you in finding a job?

- (A) Its available in mobile
- (B) Connecting you with company, professionals faster
- (C) Its economical
- (D) As informed by others

Answer-B

52- Magnificent, sharp, lengthy, bright, - are examples of _____.

- (A) nouns
- (B) describing words
- (C) action words
- (D) pronouns ढ

Answer-B

53- Making a good choice means _____.

- (A) Looking closely, then deciding
- (B) Not looking
- (C) Talking a lot
- (D) Deciding quickly

Answer-A

54- What does having a green mindset mean?

- (A) Ignoring pollution and waste management

- (B) Caring for the environment and using resources wisely
- (C) Making choices that harm the
- (D) Using resources without considering sustainability

Answer-B

55- In your resume, which information has less importance?

- (A) Skill training completed
- (B) Experience
- (C) Qualification
- (D) Expected salary

Answer-D

56- Which among the following is not an online payment application?

- (A) BHIM UP
- (B) Google Pay
- (C) Banking Applications
- (D) Instagram

Answer-D

57- Which website has an 'Idea Bank'? Where you can find a list of multiple problems faced by the country now?

- (A) Start-up India
- (B) Google
- (C) Firefox
- (D) Yahoo

Answer-A

58- "Gig" economy is _____.

- (A) Regular job
- (B) Foreign economy
- (C) Indian economy
- (D) A system of work where people work in part-time

Answer-D

59- _____ is influenced by rapid change in technology.

- (A) Nature of work
- (B) Working capital
- (C) Workforce
- (D) Future of work

Answer-D

60- What should you do before making a choice at work?

- (A) Look at the details, listen to others' ideas and choose
- (B) Take immediate decision
- (C) Don't think too much
- (D) Don't discuss with others

Answer-A

61- Table, wire, socket, cable, hammer, nail - are _____.

- (A) describing words
- (B) action words
- (C) pronouns
- (D) naming words

Answer-D

62- Working hard to achieve your goals and not giving up when you face failure is called _____.

- (A) Grit
- (B) Self-awareness
- (C) Self-belief
- (D) Independent decision making

Answer-A

63- The conditions in a place that affect the behaviour and development of somebody or something is called _____.

- (A) Locality
- (B) neighbourhood
- (C) environment
- (D) facilities

Answer-C

64- Which one is essentially required to receive communication by Email?

- (A) Email account
- (B) Desktop
- (C) Printer
- (D) Laptop

Answer-A

65- When someone needs funding for a small business, what should they do to find a suitable investor?

- (A) Wait for the suitable investor
- (B) Send business plan to friends
- (C) Attend networking events to meet suitable investors.

(D) Send business plan to every investor online

Answer-C

66- While applying for a job, important information should mention in the covering letter is _____.

- (A) Education details.
- (B) Salary expectations.
- (C) reasons of suitable for the role.
- (D) hobbies. **Answer-C**

67-When we find a faster wayto pack products at the factory,what should we do?

- (A) Pack products faster than our coworkers
- (B) Share the faster packing method with our team
- (C) Continue packing the way the team has been doing
- (D) Keep the method as secret

Answer-B

68-SkillIndia Digitalis _____.

- (A) a digital Movie
- (B) a platform for learning and career resource
- (C) central govt. office
- (D) name of a trade

Answer-B

69-Inateam where members have different ideas and there is a disagreement, what should be done?

- (A) Choose one idea without discussion
- (B) Let the margue
- (C) Ask some one else to decide
- (D) Discuss both ideas and find away to make everyone agree

Answer-D

70- In an organisation, if all the workers are skilled and systematically working, the organisation will be _____.

- (A) Loss for the organisation
- (B) Less work gets done
- (C) Confusion
- (D) More output and more profit

Answer-D

71-If coworkers are gossiping about another coworker what you should do?

- (A) Tell another coworker about the gossip
- (B) Listen to the gossip
- (C) Feel that gossiping is in appropriate workplace behaviour
- (D) Join the conversation and continue

Answer-C

72-In an email, where will you add the recipient email address whom you want to send the copy of an email?

- (A) To
- (B) Subject
- (C) Bcc
- (D) CC

Answer-D

73- Which of the following is a good work habit?

- (A) Not giving up when something goes wrong
- (B) Getting tensed when work is challenging
- (C) Choosing easy tasks
- (D) Not following workplace rules

Answer-A

74- If your first design of design thinking doesn't work, what should you do?

- (A) Give up on it
- (B) Purchase some other design
- (C) Make something else
- (D) Ask for feedback and try to improve

Answer-D

75- Migration of work means

- (A) Going to a different place to find a job
- (B) Working in different shifts
- (C) Shifting the industry
- (D) Shifting of profession

Answer-A

76- Appropriate work place etiquette_____

- (A) being late
- (B) being punctual
- (C) talking loudly
- (D) Interrupting

Answer-B

77- If someone wants to sell home made products, what they have to do, to grow the business?

- (A) Keep doing the same thing without any changes
- (B) Find shop keepers and build marketing with them.
- (C) Wait for an opportunity to grow the business
- (D) Only sell to her neighbours

Answer-B

78- If a teammate is struggling to complete their assigned task, what should you do?

- (A) Criticize them for not being efficient
- (B) Offer to help and support them to complete their task
- (C) Complain to the superior about their lack of contribution
- (D) Ignore their struggle and focus on your own tasks

Answer-B

79- Which one is a social networking site?

- (A) Outlook express
- (B) Lotus notes
- (C) Mozilla
- (D) Facebook

Answer-D

80-Which of the following is considered as appropriate workplace behaviour?

- (A) Interrupting others during meetings
- (B) Talking loudly on the phone
- (C) Maintaining a clean workspace
- (D) Being late to work regularly

Answer-C

81-On completion of your ITI training what is the first step to get a job.

- (A) applying for jobs
- (B) report for work
- (C) wait for job offer
- (D) joining letter

Answer-A

82-If you want to give people relevant information about you and your business in an easy way,you will

- (A) verbally tell them when they ask
- (B) write on a piece of paper and give
- (C) ask them to search on Google
- (D) give them your business card

Answer-D

83-Role models_____people to follow them.

- (A) motivate
- (B) Inspire
- (C) elevate
- (D) instruct

Answer-B

84-The process of learning a completely new skill is called_____

- (A) Upskilling
- (B) Skilled worker
- (C) Semi-skilled
- (D) Reskilling

Answer-D

85- Which one is a search engine?

- (A) Flickr
- (B) Facebook
- (C) Google
- (D) Hotmail

Answer-C

86- Which among the following is self-employment idea?

- (A) Freelance tailoring Service
- (B) Boutique owner
- (C) Home catering service
- (D) All the options

Answer-D

87- We use Google maps to follow the _____ to reach a place.

- (A) destination
- (B) direction
- (C) remark
- (D) distance

Answer-B

88- Complete the sentence with suitable describing words.

There is water scarcity in the locality. The area is _____

- (A) dry

(B) uneven

(C) noisy

(D) boring

Answer-A

89- What is the benefit of self-employment?

(A) Directly earning from your work

(B) Fixed working hours

(C) Limited control over your tasks

(D) Monthly salary payment

Answer-A

90- A resume should be _____

(A) having acronyms and abbreviations

(B) having long and detailed information

(C) bold and colourful

(D) short and precise

91- The reason to reply to comments on your YouTube videos is _____.

(A) so viewers feel connected

(B) to get more friends

(C) to get more videos

(D) to use the internet

Answer-A

92- Punctuality means _____

(A) being on time

(B) politeness

(C) informal

(D) done by punching machine

Answer-A

93- Which of the following is a green practice?

(A) Not separating recycle waste

(B) Using high power air conditioners

(C) Grow plants wherever possible

(D) Not using plastic containers

Answer-C

94- Green practice means_____

- (A) Leaving lights and fans on when leaving a room.
- (B) Buying single-use plastic water bottles.
- (C) Buying unnecessary items.
- (D) Carrying a cloth bag to buy groceries.

Answer-D

95- Campus recruitment is conducted at _____

- (A) in a company
- (B) ITI
- (C) capital city of the state
- (D) on line

Answer-B

96- When you start a discussion on a topic, what do you say?

- (A) Let us discuss
- (B) Let you start
- (C) Let us finish
- (D) Let me say

Answer-A

97- _____registration would help to access the schemes introduced by the Government.

- (A) Pan card
- (B) TIN
- (C) Aadhaar
- (D) GST

Answer-C

98- Which of the following best describes the self-management skill of reliability?

- (A) Not being honest with colleagues
- (B) Ignoring the needs of others
- (C) People always trust you to do your job well
- (D) Not completing tasks on time

Answer-C

99- After preparing the resume, the next important step to do is

- (A) applying for the job.
- (B) preparing for interview.
- (C) writing an impressive cover letter.

(D) sending the resume to the employer. Answer-C

100- A person who is associated with the starting of a business is called

- (A) Entrepreneur
- (B) Businessman
- (C) Sales Executive
- (D) Merchant

Answer-A

101- If you want to work in a foreign country, to migrate safely, you have to

-----.

- (A) Think how you spend your money.
- (B) Leave to foreign country without informing anyone.
- (C) Learn about the place, confirm the job before moving.
- (D) Move and ask for confirmation.

Answer-C

102- Skills, such as commitment, reliability, adaptability and flexibility _____.

- (A) Business
- (B) Self management
- (C) Team work
- (D) Education

Answer-B

103- While working with a team, if we notice a co-worker struggling with their workload, what should we do?

- (A) Offer to help them with their tasks.
- (B) Laugh at their inability to manage their workload.
- (C) Ignore their struggles and focus on your own work.
- (D) Report their struggles to the supervisor.

Answer-A

104- _____ is when a group of people work together to finish something.

- (A) Business
- (B) Experience
- (C) Team work
- (D) Education

Answer-C

105- What are some people related problems in a workplace?

- (A) More staff in the workplace
- (B) More experienced workers
- (C) Workers do not communicate while facing the problem
- (D) More qualified workers

Answer-C

106- If a co-worker asks for a support with a task, proper way of responding is _____.

- (A) send a formal request via email.
- (B) ask, you don't even know this much?
- (C) sure, I can help. What do you need?
- (D) I am too busy right now.

Answer- C

107- Believing that you have the capability to achieve your dreams is called _____.

- (A) Self-awareness
- (B) Independent decision making
- (C) Self belief
- (D) Grit

Answer- C

108- How can users access the Skill India Digital Platform?

- (A) On computers, tablets, and phones
- (B) Only through offline training centers
- (C) Only on a specific type of device
- (D) Through a specialized learning app

Answer- A

109- Which section of the Skill India Digital Platform helps users find physical training centers nearby?

- (A) Job Exchange
- (B) Recommendations
- (C) Centres
- (D) Skill courses

Answer- C

110- The conversion of computer data from one format to another is called _____.

- (A) pasting
- (B) data conversion
- (C) cutting

(D) copying

Answer- B

111- Which one is a key skill to be used for a Market survey?

- (A) Computer knowledge
- (B) Appearance
- (C) Communication
- (D) MBA Degree

Answer- C

112- Separating paper and plastic from bio waste before throwing them away is _____.

- (A) profession
- (B) innovation
- (C) green mindset
- (D) creativity

Answer- C

113- What should be avoided during an interview?

- (A) Answer clearly and loudly
- (B) Look somewhere and answer
- (C) Maintain eye contact
- (D) Greet the employee with a smile

Answer- B

114- While working, it is important to share our ideas with others because _____.

- (A) to make others feel included.
- (B) to impress others.
- (C) talking can help and make ideas better.
- (D) to show off your knowledge

Answer- C

115- What is "Informal communication"?

- (A) All verbal communication
- (B) Official communication following a set of rules
- (C) Talking at official meetings
- (D) Casual conversations outside of official work arrangements

Answer- D

116- While addressing your boss, you should be _____.

- (A) Formal
- (B) Expressive
- (C) Impolite
- (D) Informal

Answer- A

117- Comma, full stop, question mark are examples of _____

- (A) punctuation marks
- (B) design
- (C) next paragraph
- (D) formal communication

Answer- A

118- While purchasing new chairs for students using design thinking, what is the first step to think?

- (A) Think what is student's requirement in a chair
- (B) Plan how to make the chair
- (C) Choose the colour of the chair
- (D) Test different chair designs

Answer- A

119- Which of the following is not a resource?

- (A) Profit earned
- (B) Customer database
- (C) Raw materials
- (D) Loss in business

Answer- D

120- _____ is a list of your qualifications, your skills and work experience.

- (A) Syllabus
 - (B) Resume
 - (C) Curriculum
 - (D) Mark sheet
- Answer-B

121- Which of the following is required for teamwork?

- (A) Easy tasks
 - (B) Conflict and Argument
 - (C) Money
 - (D) Proper communication
- Answer-D

122- Which one is a cyber crime?

- (A) Online gambling
- (B) Online purchasing
- (C) Sending email
- (D) Chatting with friends

Answer-A

123- What does self-employment mean?

- (A) Working independently and earning directly from your work
- (B) Working for a single employer
- (C) Working part-time from home
- (D) Receiving a fixed monthly salary

Answer-A

124- You are a strong learner if you _____.

- (A) keep growing and adding to your knowledge
 - (B) get a PhD
 - (C) live for a long time
 - (D) join online courses
- Answer-A

125- To learn digital marketing in the Skill India Digital Platform, we have to _____.

- (A) explore the skill courses section.
- (B) search for job opportunities.
- (C) enroll in any course available.
- (D) find a physical training center.

Answer-A

126- Create a digital CV and share it with a QR code is _____.

- (A) interview skill
- (B) entrepreneurship
- (C) your digital identity
- (D) digital marketing

Answer-C

127- While reviewing a resume which is very important to keep in mind?

- (A) Salary details
- (B) Interest and hobbies
- (C) Lot of information to get the job
- (D) Highlight skills and qualifications that match the job

Answer-D

128- The first version of a product/service is called _____.

- (A) First edition
- (B) First initiative
- (C) model product
- (D) prototype

Answer-D

129- _____ is a file storage and synchronization service of cloud computing developed by Google.

- (A) Google Drive
 - (B) Hard disc
 - (C) Netflix
 - (D) Internet Explorer
- Answer-A

130- For a project work you have collected some information from internet and sorted it. What is the best way to share it with your team?

- (A) Print all the information and give it to the team members.
- (B) Talk about information which are not available
- (C) Tell everything in detail
- (D) Share only the main points clearly, use simple words and pictures, if possible

Answer-D

131- While working with your team on a project, one of your coworkers is finding it difficult to finish their job. What should you do in this situation?

- (A) Ignore their problem and focus on your own work.
- (B) Help and support them to finish their work.
- (C) Finish their work for them.
- (D) Complain about them to the boss.

Answer-B

132- Imagine you are setting up a mobile repair shop. Which of the following is the most important for its success?

- (A) Picking the right shop name
- (B) Offering repair services at a higher price
- (C) Setting up the shop in a busy area
- (D) Putting up flyers in the neighbourhood

Answer- C

133-If you face a problem, which of the following entrepreneurial mindset traits would be most helpful?

- (A) Waiting until everything is perfect to do something
- (B) Taking action to solve the problem
- (C) Ignoring the problem and hoping it goes away
- (D) Blaming others for the problem

Answer-B

134) If a factory manager get big order to deliver but there are shortage of workers. In that situation, the manager will.

- (A) Cancel the orders
- (B) Ignore the problem
- (C) Request workers to work extra hours
- (D) Stop working

Answer- C

135_____area great way for gig workers to find jobs.

- (A) Employment exchange
- (B) Placement cell

- (C) Employment newspaper
(D) Online platforms and Apps Answer-D

136- A _____ helps gig workers find customers and provide services at a fixed charge.

- (A) netflix (C) school
(B) platform/app (D) bank

Answer-B

137- _____ is an activity where students who finished their studies from institute and come to talk to the present students.

- (A) Campus interview (B) Job mela (C) Conference (D) Alumni Engagement

Answer- D

138- How have workplaces changed after COVID?

- (A) Mix of in-person and at-home work
(B) Less job opportunities
(C) No focus on technology
(D) Flexible in working hours is nil

Answer- A

139- What is an example of formal written communication?

- (A) Writing an email to your manager
(B) Texting a friend
(C) Posting on social media platforms
(D) Sending a WhatsApp message

Answer- A

140- If you are making a new app useful for the people. Why it is important to test it?

- (A) Because it's fun to watch others try your app
(B) To see how people use it and make it better
(C) To check if people like the colors and pictures
(D) To show people how good you are at making apps

Answer- B

141- Hi, how are you, whats up, these are examples of _____

- (A) impolite communication
- (B) informal communication
- (C) polite communication
- (D) formal communication

Answer- B

142- Fill up the blanks with suitable words so as to become a meaningful sentence.

"Tell us about a difficult situation you have _____ and how you _____ to come out of it.

- (A) face, manage (C) managed, face
- (B) faced, manage (D) faced, managed

Answer- D

143- Which is the most important document required by companies to select people for job?

- (A) Your certificate
- (B) Sports certificate
- (C) Your resume
- (D) Conduct certificate

Answer- C

144- Which is an example of being open to learning in the workplace?

- (A) Avoiding feedback from colleagues
- (B) Accepting and adapting to changes in work processes
- (C) Ignoring advancements in technology
- (D) Refusing to attend training sessions to improve technology skills

Answer- B

145- Which one is the input device among the options?

- (A) Speaker

- (B) Printer
- (C) Keyboard

Answer- C

146- Complete the sentence with suitable describing words.

The transportation to some rural areas is difficult as the roads are _____

- (A) uneven (C) dry
- (B) polluted (D) boring

Answer- A

147- Plan, Prepare, Perform is related to _____

- (A) attending interview (C) your resume
- (B) your personality (D) your work

Answer- A

148- While writing an email, why is it important to state the subject clearly?

- (A) To show he has good English skills
- (B) To tell the company what the email is about
- (C) Subject should not be left blank
- (D) Email cannot be sent without a subject line

Answer- B

149- You are requested to complete the given assignment by Monday This is an example of _____

- (A) informal communication
- (B) a request
- (C) an order
- (D) formal communication

Answer- D

150- You have bakery business. Using WhatsApp, what way it will help your Business?

- (A) Chat with friends
- (B) Check status updates
- (C) Quickly respond to customer orders and questions

(D) Watch baking tutorial videos

Answer- C

151- A bag manufacturer design a product and show it to 5 different people for feedback.

Why is it important to listen to different users and not just one?

(A) To get a lot of appreciation for her work

(B) To get a lot of ideas

(C) Because it's fun

(D) To understand the common problems from different users

Answer- D

152- Fill up the blanks with suitable words so as to become a meaningful sentence.

There _____ a coffee shop _____ the park.

(A) is, next to

(B) are, next to

(C) is, next

(D) are, next

Answer-A

153- Alexa, Google, Siri are in the category of _____

(A) Musical instruments

(B) Translation devices

(C) Voice recorders

(D) Voice recognition devices

ANSWER- D

154- When we want to type using our voice, we are using _____

(A) voice of google

(B) voice recognition feature

(C) voice recorder

(D) voicing technique

ANSWER-B

155- Which of the following is a people skills required in a workplace?

- (A) Technical Skills
- (B) Being kind & Listening
- (C) Driving skills
- (D) Work alone

ANSWER -B

156- Why is it important to think of new ways to solve problems?

- (A) To waste time
- (B) New ideas can make work easier or faster
- (C) It is unnecessary to try new things
- (D) It is fun to try new things

ANSWER-B

157- Which is the most essential skill to get a job?

- (A) Translation Skill
- (B) Learning more language skill
- (C) Interview Skill
- (D) Entrepreneurship Skill

ANSWER-C

158- "_____" is a time when you, your family, and your teacher meet and interact to understand and support each other better.

- (A) Family meeting
- (B) Family tour
- (C) Family income
- (D) Family engagement

ANSWER-D

159- While applying for a job, the covering letter should be easy to read by means of

- (A) dividing the text into shorter paragraphs.
- (B) extra-curricular activities.
- (C) increasing the font size.

(D) long descriptions.

ANSWER-A

160- The ability to wait and stay calm _____

- (A) patience
- (B) problem solving
- (C) interpersonal skill
- (D) creativity

ANSWER-A

161- You are a talented carpenter. In what way it will help your work on YouTube video?

- (A) Many related videos are available
- (B) Its a hobby
- (C) It allows people to see your carpentry skills and appreciate your expertise
- (D) Just a time pass

ANSWER-C

162- "Which is an example of a self-employment?

- (A) Working full-time at a company
- (B) Driving for a taxi company
- (C) Teaching subjects or skills as a personal tutor
- (D) Being a student at a university

ANSWER-C

163- For applying a job your first preparation is _____

- (A) prepare for interview
- (B) save money for expenses
- (C) preparing resume
- (D) book a ticket to interview place

ANSWER-C

164- Important factors to think about before migrating _____

- (A) tourist place
- (B) freedom

- (C) easy job
- (D) cost of living

ANSWER-D

165- How does design thinking help solve problems?

- (A) By following a strict process
- (B) By trusting on personal assumptions
- (C) By guessing solutions randomly
- (D) By understanding what people need and improving solutions

ANSWER-D

166- What is stress?

- (A) Feeling of surprise
- (B) Feeling of frustration
- (C) Feeling of delight
- (D) Feeling of joy

Answer-B

167- Which kind of persons are with very good behaviour, achievements and lead as an example?

- (A) Role models
- (B) Customer service executives
- (C) ITI instructors
- (D) Sales supervisors

Answer -A

168- To become a gig worker, a person should find gig work opportunities by means of

- (A) Find a multi national company.
- (B) Study about gig work
- (C) Connect with friends, people you might know and groups in your communities.
- (D) Independently search for job.

Answer-C

169- What is called a media presentation shared over the Internet?

- (A) Seminar
- (B) Live telecast
- (C) Live media
- (D) Webcast

Answer-D

170- What is the basic requirement for IT related work?

- (A) Computer
- (B) Browse
- (C) IT companies
- (D) Internet

Answer-A

171- Future Skill for workplaces, which has less importance?

- (A) New technology
- (B) Work from home
- (C) Work with digital tools
- (D) Working hours only in between 9AM to 5PM

Answer-D

172- During a job interview, which of the following responses shows good formal communication?

- (A)"My top three skills are problem- solving, teamwork, and attention to detail. "
- (B)"I'm pretty good at a lot of things."
- (C)"Uh, I guess I can do a little bit of everything."
- (D)"I don't know, I never really thought about it."

Answer-A

173-Why is it important to have a business plan before starting a business?

- (A) Just a try
- (B)To identify potential challenges with clear goal and risks
- (C)To show you are an entrepreneur
- (D) To get loan from bank

Answer-B

174-Which of the following statements shows good team work?

- (A) Keeping all ideas to yourself
- (B) Working together towards a common goal
- (C) Criticizing teammates' efforts
- (D) Ignoring others' ideas and opinions

Answer-B

175 - Which of the following best describes the gig economy?

- (A) A system where workers take on part-time or temporary jobs
- (B) A system where workers have fixed work hours and locations
- (C) A system where workers are paid a fixed monthly salary
- (D) A system where employees work full-time for a single employer

Answer: A

176 - Fill up the blanks with suitable words so as to become a meaningful sentence.

Rainwater harvesting _____ to prevent water scarcity.

- (A) gave
- (B) gives
- (C) helps
- (D) help

Answer: C

177 - What has drastically changed the world of work?

- (A) Investment
- (B) Workers
- (C) Environment
- (D) Technology

Answer: D

178 - What is the main purpose of the Skill India Digital Platform?

- (A) To facilitate online learning and skill development
- (B) To provide financial assistance for job seekers
- (C) To offer offline training programs

(D) To promote international job opportunities

Answer: A

179 - When you borrow a pen from your classmate, you should say?

(A) I take your pen

(B) Can you please give me a pen

(C) I want a pen

(D) Give me your pen

Answer: B

180 - One important rule to network effectively is _____.

(A) focus on selling your product

(B) talk to the same people

(C) keep in touch with your contacts

(D) identify your competitors

Answer: C

181 - Checking the skills required is important before applying for a job, because _____.

(A) It is not important to check the skills required for a job.

(B) To chat with friends about it.

(C) To be sure you can do the job well.

(D) To impress the interviewer.

Answer: C

182 - Important skills required for the future of work is _____.

(A) Learn making reels and TikTok videos.

(B) Avoid learning new skills.

(C) Master internet skills.

(D) Avoid building professional relationships.

Answer: C

183 - If you have to migrate from your place to a new city to join a new job, what will you do to migrate safely?

(A) Research about living in the new city

- (B) Buy gifts for her neighbours
- (C) Always share exact location on social media
- (D) Believe everything brokers say

Answer: A

184 - Complete this sentence with suitable describing words.

The roads in my town are in _____ condition.

- (A) beautiful
- (B) good
- (C) expensive
- (D) safe

Answer: B

185 - When you do not know how to use a new machine, what will be your action?

- (A) Stay silent till someone teaches you
- (B) Ask for help and learn how to use the machine
- (C) Leave the job
- (D) Take a break and do it later

Answer: B

186 - What are the different steps in design thinking?

- (A) Imagine, Decide, Create and Try
- (B) Try, Create and Decide
- (C) Imagine, Plan and Try
- (D) Listen, Choose, Plan, Try, Ask

Answer: D

187 - What is an important future workplace skill for employees?

- (A) Doing paperwork
- (B) Doing manual work
- (C) Networking and relationship-building
- (D) Planning holidays

Answer: C

188 - The ability to connect well with people is _____.

- (A) leadership
- (B) interpersonal skill
- (C) time management
- (D) creativity

Answer: B

189 - What describes "Human Resources" in a furniture manufacturing company?

- (A) its products
- (B) its profit
- (C) its sales record
- (D) its employees

Answer: D

190 - What encourages entrepreneurship on a grand scale?

- (A) Become famous
- (B) Become rich quickly
- (C) Leader
- (D) New business opportunities

Answer: D

191 - An illegal activity committed on the internet is called _____.

- (A) search engine
- (B) social networking
- (C) cyber crime
- (D) virus

Answer: C

192 - What should you always remember when creating your profile on a job portal?

- (A) To always be truthful
- (B) To leave out important information
- (C) To include skills required for the job, even if you don't have them
- (D) To use a fake name

Answer: A

193 - What is formal communication?

- (A) Casual chatting on social media
- (B) All written communication
- (C) Official communication following a set of rules
- (D) Talking with friends and family

Answer: C

194 - Which of these situations show people working well together as a team?

- (A) A group sharing ideas and listening to each other
- (B) All are working without discussing each other
- (C) One person doing all the work without any help from team members
- (D) Two people arguing and not agreeing

Answer: A

195 - You are a trained electrician. If you want to get a job in Delhi, what are the key words you use to search in a job portal?

- (A) Delhi job
- (B) Electrician jobs in Delhi
- (C) Electrician training
- (D) Electrician job

Answer: B

196 - When you do not know how to use a new machine, what will be your action?

- (A) Take a break and do it later
- (B) Stay silent till someone teaches you
- (C) Leave the job
- (D) Ask for help and learn how to use the machine

Answer: D

197 - Which of the following is self-management skills?

- (A) Adaptability and Flexibility
- (B) Listening skill
- (C) Speaking skill

(D) Writing skill

Answer: A

198 - When your team's project is unsuccessful, what will you do as a leader?

- (A) Ignore the team members
- (B) Encourage learning from mistakes
- (C) Blame the team for the failure
- (D) Scold them

Answer: B

199 - Someone loves photography and dreams of starting his own photography business, he has to start with _____.

- (A) buy the latest photography equipment, even if it is beyond your budget.
- (B) start advertising without any planning.
- (C) learn more about photography and join a basic photography course.
- (D) take random pictures and share them online.

Answer: C

200 - Gestures, facial expressions, eye contact are examples of _____.

- (A) oral communication
- (B) non-verbal communication
- (C) written communication
- (D) verbal communication

Answer: B

201 - What is a job portal?

- (A) A website where companies post jobs and people can search and apply for them
- (B) A special room where job interviews happen online
- (C) A building where you go to find work
- (D) A place where you can play games and talk to friends

Answer: A

202 - Which of these situations show people working well together as a team?

- (A) One person doing all the work without any help from team members

- (B) All are working without discussing each other
- (C) A group sharing ideas and listening to each other
- (D) Two people arguing and not agreeing

Answer: C

203-While applying for a job through email, what are the documents need to be attached?

- (A) Resume, Course and Training Certificates
- (B) Birth certificate
- (C) Photographs from childhood
- (D) Address Proof

Answer- A

204- Which of the following is a formal introduction in a job interview?

- (B) "hello.. You can start the interview!"
- (C) "Good morning. Thank you for the opportunity."
- (D) "Hey, nice to meet you!"

Answer- C

205- _____ is always doing our work with dedication with our best.

- (A) Reliability
- (B) Honesty
- (C) Commitment
- (D) Self management

Answer- C

206-When presenting your business plan to a potential investor, you should be clear about_____

- (A)investment, expected customers, potential earnings
- (B) staff strength
- (C)bank loan
- (D) expected profit

Answer- A

207-Your community wants to reduce plastic waste. How can you use design thinking to find new ideas to solve this problem?

- (A) Make more things with plastic because they're easy to use
- (B) Ignore the problem because it's too difficult to solve

- (C) Work together with shops or people nearby to find ways to use less plastic
- (D) Blame others for the plastic waste issue

Answer- C

208-You have an Instagram page for jewellery business. What should you do to connect with viewers?

- (A) Post cooking videos
- (B) Share daily updates about your business as Stories on social media
- (C) Post dance reels
- (D) Post about a T.V. show you like

Answer-B

209-Fill up the blanks with suitable words so as to become a meaningful sentence.

There are many dos and don'ts to be _____ while preparing for/ attending an _____

- (A) there, interview
- (B) identified, interviewed
- (C) identify, interview
- (D) identified, interview

Answer-D

210-Learning an ew skill to do fundamentally the same nature of task is called _____

- (A) Reskilling
- (B) Technician
- (C) Semi-skilled
- (D) Up skilling

Answer-D

211-The practice of using a network of remote servers hosted on the internet to store, manage and process data is called _____

- (A) Google
- (B) Cloud computing
- (C) Yahoo
- (D) Search engine

Answer-B

212-An entrepreneurial mindset means to _____

- (A) identify opportunities and Use them for your benefit
- (B) Not setting any goal
- (C) not taking any risk
- (D) think only about profit

Answer-A

213- A computer system consists of_____

- (A) circuit diagram
- (B) hardware and software
- (C) software and program
- (D) mouse and keyboard

Answer-B

214- Suggestion for green practices in the office canteen is _____

- (A) Using steel plates and cups.
- (B) Serve green vegetables.
- (C) Delivering food in plastic packaging.
- (D) Providing lunch to the staff in disposable plates

Answer-A

215- Anitha started an Instagram page for her craft business. She used _____

Marketing strategy.

- (A) poster
- (B) online marketing
- (C) networking
- (D) taglines

Answer-B

216- Which of the following behaviours is not a characteristic of a team player?

- (A) Listening to teammates' ideas
- (B) Respecting different view points
- (C) Willingness to help others
- (D) Taking credit for others work

Answer-D

217- What are 3 important elements to remember while doing a survey?

- (A) Talk, learn, understand
- (B) Listen, observe, tell
- (C) Observe, record, learn
- (D) Listen, observe, learn

Answer-D

218- Your team has completed a challenging project successfully. How should you celebrate the success?

- (A) Don't celebrate and start the next job
- (B) Blame the group for any errors
- (C) Say you did everything and don't praise others
- (D) Thank everyone in your group for helping

Answer-D

219- A green workplace _____

- (A) Uses less paper and energy-saving lights.
- (B) Ignores waste separation and recycling.
- (C) Uses disposable items and plastic water bottles.
- (D) Keeps the lights on all the time.

Answer-A

220- While working in a team, one of the team members is on leave and not completed the tasks, our action should be _____

- (A) Ask other team members for help and complete your co-worker's task
- (B) Criticise your co-worker for not completing his work
- (C) Complain your supervisor about the incomplete work
- (D) Keep working on your own tasks

Answer-A

221- Which option below describes a "gig" in the gig economy?

- (A) A job with full-time hours and benefits
- (B) No specific task
- (C) A typical 9-5 job

(D) A specific task or project

Answer-D

222- While doing some difficult work, if it is not going on well, what we have to do?

(A) Keep trying and look for another way

(B) Get upset and quit trying

(C) Take a break and give up

(D) Ask someone else to do it for you

Answer-A

223-The ability of a computer or machine to mimic the capabilities of the human mind is called _____

(A) Artificial intelligence

(B) Natural intelligence

(C) Artificial performer

(D) Intellect

Answer-A

224- A person can get promotions based on his _____ and _____.

(A) Environment, experience

(B) qualifications, experience

(C) Example, qualifications

(D) Conduct, behaviour

Answer-B

225- If your coworkers don't agree with your project idea, what's a good way to handle it with an entrepreneurial mindset?

(A) Stick to your idea without listening to others

(B) Ask for feedback and make your idea better with their help

(C) Stop talking about it

(D) Give up on your idea

Answer-B