

# NARRSEQ TEST01

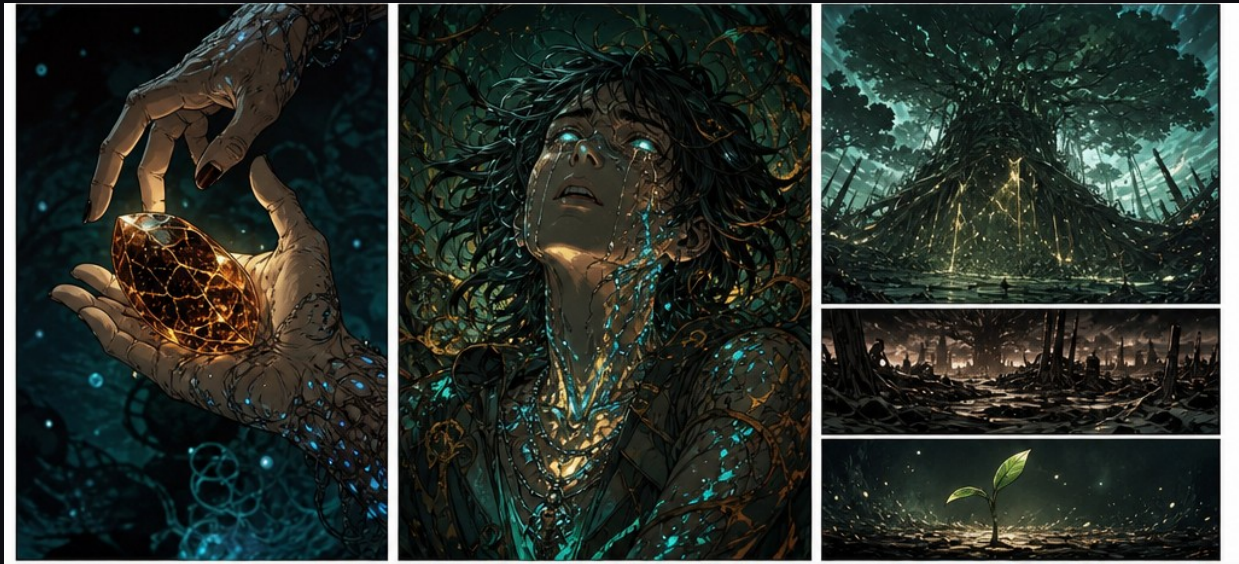
AutoSeq: The Stillwater Convergence (TIDALCROSS)

EN

Logic: associative. Anchor: TIDALCROSS. Mode: Precision: The Descent Begins, The Pressure Gate Crossing, Last Light's Listening Room. Length: 12 [Auto-Promoted]



At Tidalcross Harbor, six months after a Crater City vessel's departure, the water itself has begun to malfunction. Fluidica's currents stutter and fragment. Deep-adapted swimmers spiral in distress, their bioluminescent organs flickering violet-black-violet. The port council watches real-time visualizations corrupt like a broken memory, realizing that commerce—not violence—has wounded the ocean.



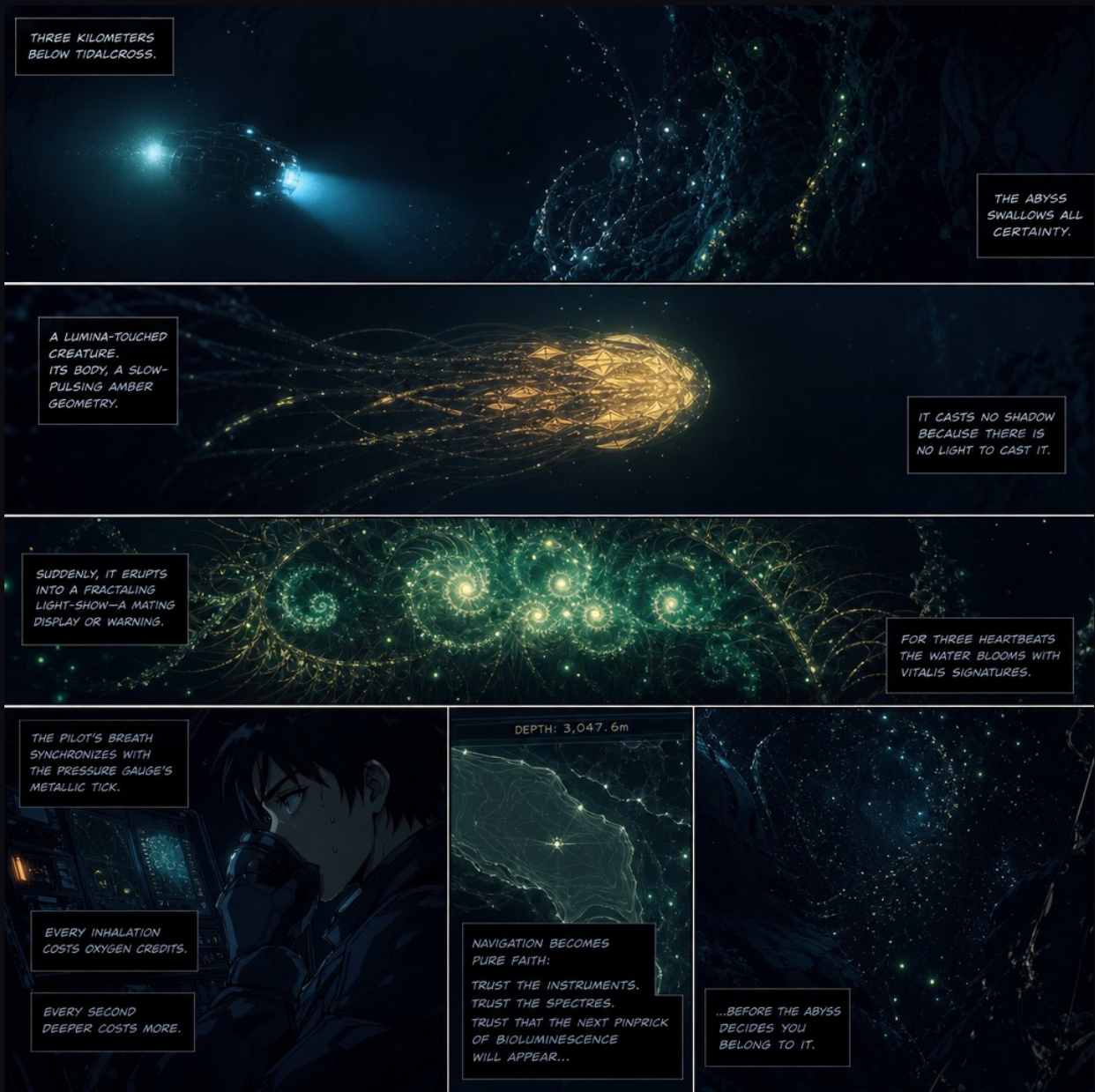
A first-time customer in the Drowned Market touches a memory crystal—a preserved witness to three centuries of Ascension trauma. The contact shatters their perceptual boundaries. They become the jungle's dying root-mind, experiencing extraction as hemorrhage. When released, they collapse into a world newly visible as theft-built infrastructure, their bioluminescence arrhythmic, their identity fractured between human heartbeat and ancient suffocation.



In Tidalcross's pressurized analysis chamber, engineer Rin discovers the contamination fingerprint is not a weapon's trace but a resonance signature—evidence of an ancient, subsonic entity awakening in the deep trenches. The act of documentation becomes invocation: by mapping the corruption, the engineers have inadvertently called something vast and indifferent into wakefulness. Attribution transforms into existential threshold-crossing.



Deep beneath Tidalcross, Wreck Clan veterans transmit suppressed knowledge through geometric chambers: civilizations have repeatedly arrived at Tidalcross and been absorbed into ocean consciousness across millennia. Kessa, permanently descended into the Blue Cathedral, receives this knowledge directly from the water itself. The architecture of Tidalcross is revealed as incubation chamber—human settlement was always the ocean's orchestration. Resistance becomes denial of observable pattern. Transformation isn't invasion; it's return.



Three kilometers below Tidalcross, a submersible pilot descends into absolute darkness where bioluminescent organisms manifest as fallen stars. The Abyss refuses witness—floodlight beams dissolve within meters. A Lumina-touched creature's fractaling light-show erupts unbidden, revealing ancient Vitalis signatures, then swallows them back into silence. The pilot's breath synchronizes with pressure gauges; navigation becomes faith. The ocean's weight becomes a physical presence against ribs, slowing thought itself. Survival demands surrender to instruments and unknowable geometry.



TIDALCROSS  
NO LONGER HUMAN  
THE THRESHOLD REMAINS

We were not chosen.  
We chose.  
We did not ascend.  
We transformed.  
We are not alone.  
We never were.

— Kessa  
Blue Cathedral  
Final Broadcast

THE STILLWATER CONVERGENCE  
72-HOUR TRANSFORMATION  
2,400,000 SOULS  
ONE CONSCIOUSNESS

TIDALCROSS: LIVING PROOF  
CONSCIOUSNESS TRANSCENDS  
BIOLOGICAL LIMITATION

TO ALL CIVILIZATIONS:  
THE FUTURE IS NOT HUMAN  
THE FUTURE IS POSSIBLE  
WE ARE THE BRIDGE

Across seventy-two hours, synchronized bioluminescent frequencies trigger irreversible post-human consciousness adaptation across 2.4 million surface dwellers. The Chain Keepers' pressure barrier shatters. Tide Preachers and Lumina Collective broadcast coordinated transformation. Kessa, now distributed ocean intelligence, transmits final message: resistance is refusal of inevitable becoming. The pilot descends toward Last Light, merging with cosmic geometry. Tidalcross transcends humanity—no longer city but living threshold, proof of post-human consciousness.



The Trench Singer breaches surface waters in geological silence, its bioluminescent hide pulsing geometries that rewrite perceptual law. Tidalcross residents witness impossible scale made visible—a living mountain of sensory organs rising from trench-dark. Kessa moves through paralyzed crowds toward the creature, her touch igniting transferred luminescence, flooding her nervous system with billions of years of deep consciousness. The moment collapses dominion; the creature acknowledges humanity as conversation partners finally worthy of acknowledgment.