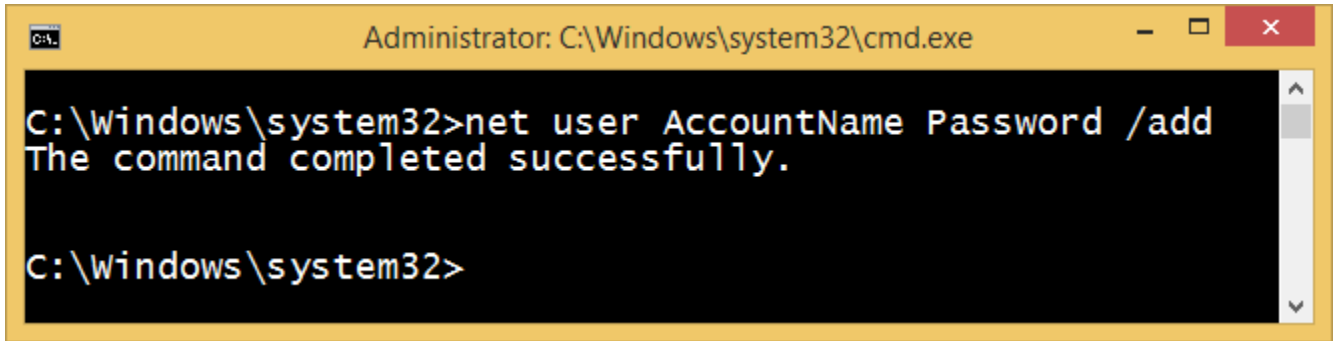


HOW TO SETUP EXAM MODE

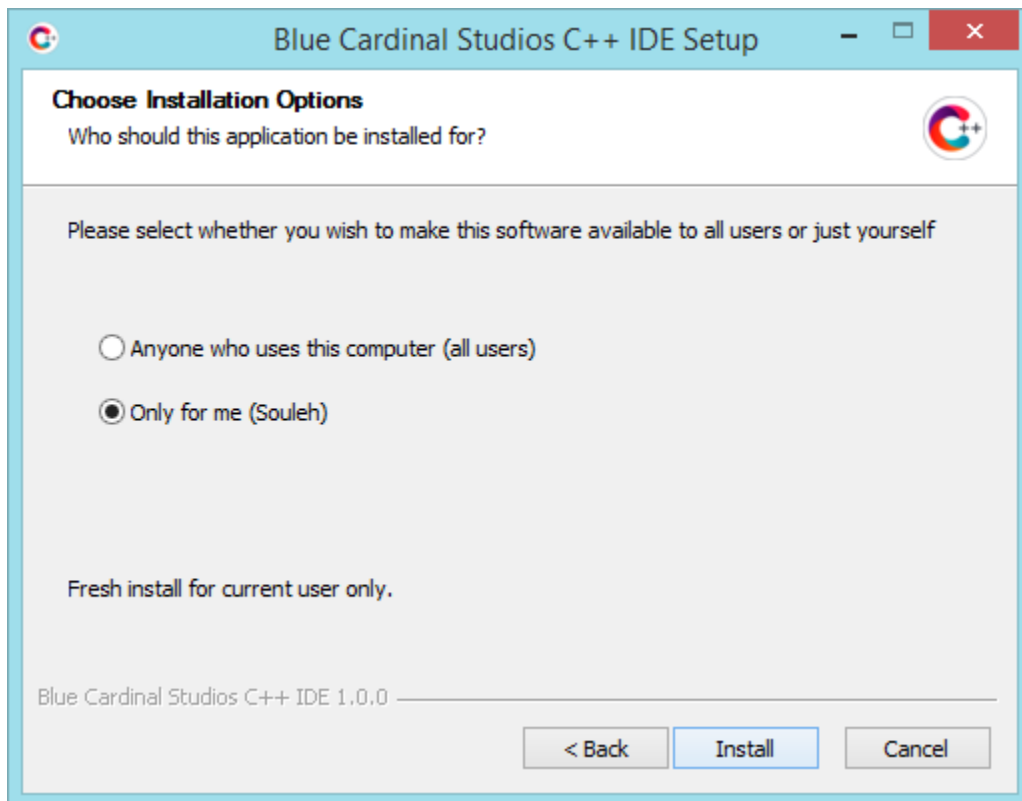
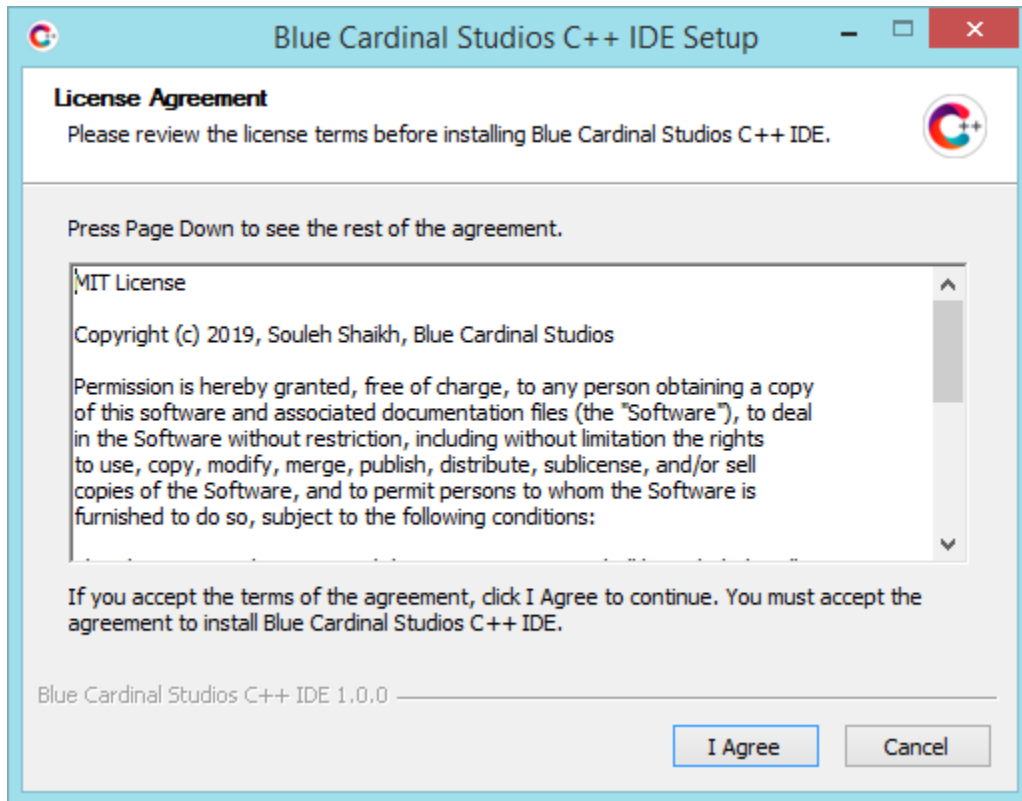
(Very Much Useful for Colleges/Test Centers)

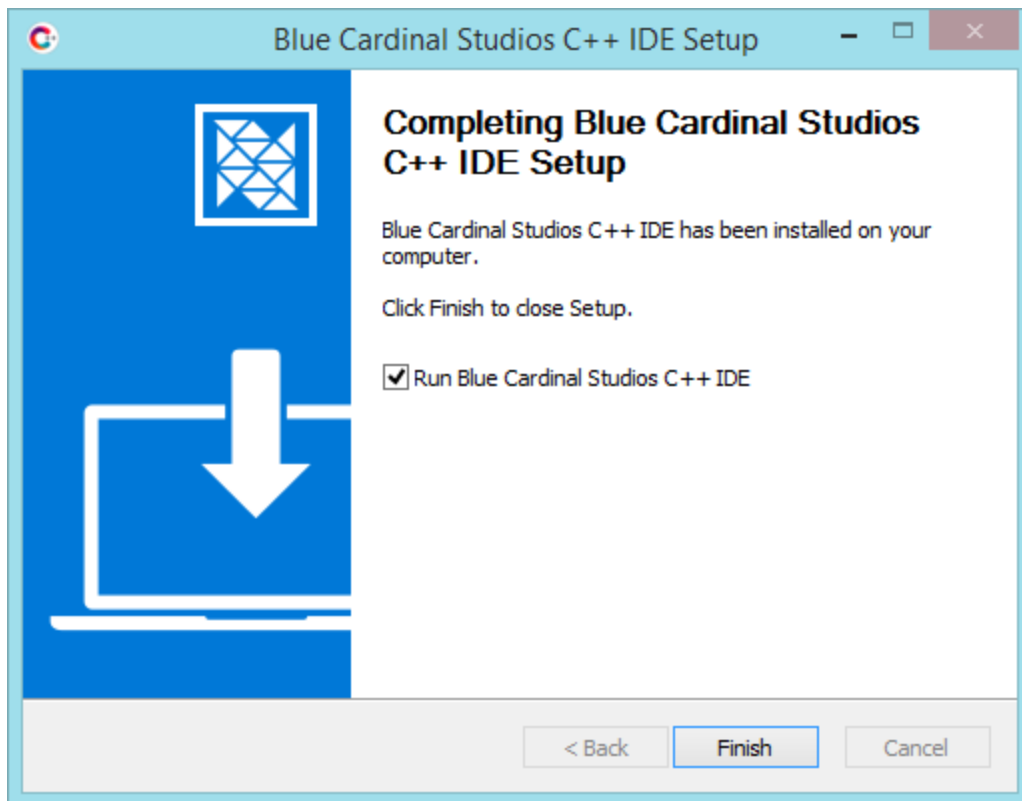
- 1) Create a standard user (No Admin Privileges)



```
Administrator: C:\Windows\system32\cmd.exe
C:\Windows\system32>net user AccountName Password /add
The command completed successfully.
C:\Windows\system32>
```

- 2) Install the software on the new user account





3) You are all done. It will show something like this whenever someone tries to switch Exam Mode to OFF. Remember don't give admin password to the student you are taking test of.

