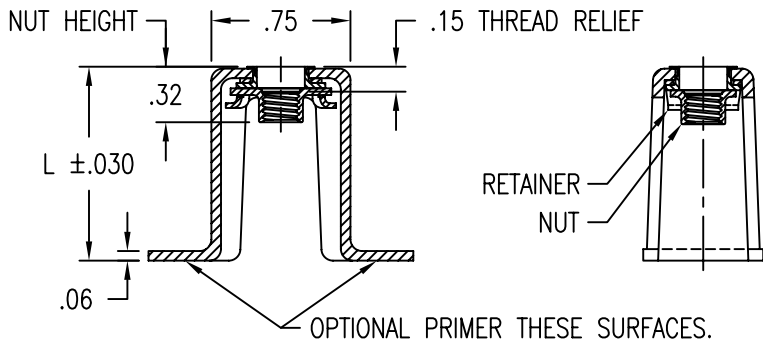
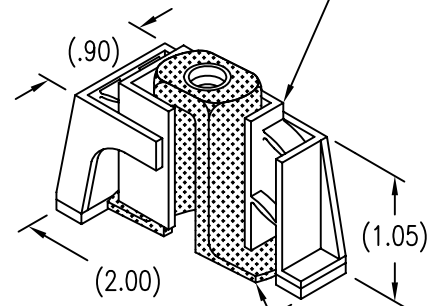


DISPOSABLE PRESSURE SENSITIVE ADHESIVE FIXTURE HOLDS NUTPLATE WHILE ADHESIVE CURES.



NUT AND RETAINER MATERIAL AND FINISH DATA

CODE	NUT MATERIAL	SPEC.	DRI-FILM LUBE	RETAINER MATERIAL	SPEC.	PASSIVATE
CR	A-286 CRES	AMS 5525	AS5272 TYPE 1	A-286, 304, 305 CRES	AMS 5525, 5639, 5514	AMS 2700

BASEPLATE MATERIAL

CODE	MATERIAL
C	CARBON/EPOXY, 350°F CURE
E	GLASS/EPOXY, 350°F CURE
G	GLASS/EPOXY, 250°F CURE

LENGTH L DATA

CODE	L
8	.500
12	.750
16	1.000
24	1.500
29	1.812

THREAD DATA AND RECOMMENDED SCREW TIGHTENING TORQUE

CODE	THREAD SIZE T	SPEC.	INSTALLATION TORQUE (IN-LBS)
08	.1640-32 UNJC-3B	AS8879	15-20
3	.1900-32 UNJF-3B		25-35
4M	MJ4 X 0,7 4H6H	ISO 5855	15-20
5M	MJ5 X 0,8 4H6H		25-35

OPTIONAL BASEPLATE PRIMER

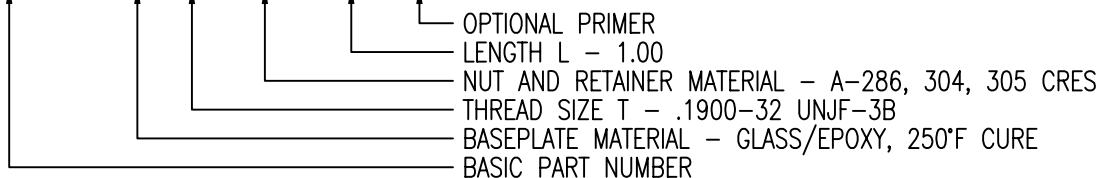
CODE	MATERIAL SPEC.
P	MIL-PRF-85582

RADIAL FLOAT OF NUT .030 MIN FROM CENTER.  
SCREW CAN ENGAGE MAX MISALIGNED NUT.  
THREAD LOCK BY ELLIPTICAL DEFORMATION.

STRENGTH REQUIREMENT: WILL WITHSTAND A 40 LB LOAD APPLIED IN ANY DIRECTION AND 45 IN-LB TORQUE.

EXAMPLE PART NUMBER

CB4023 G 3 CR 16 P



UNLESS OTHERWISE SPECIFIED, ALL DIMENSIONS ARE IN INCHES AND TOLERANCES ARE AS SHOWN BELOW. DIMENSIONAL TOLERANCES AND SYMBOLS PER ANSI Y14.5M-1982.

PROPRIETARY PARTS SHOWN IN THIS DRAWING ARE THE SUBJECT OF ISSUED UNITED STATES AND FOREIGN PATENTS AND PATENTS PENDING. UNAUTHORIZED REPRODUCTION AND/OR DISTRIBUTION OF THIS DRAWING IS SPECIFICALLY PROHIBITED.

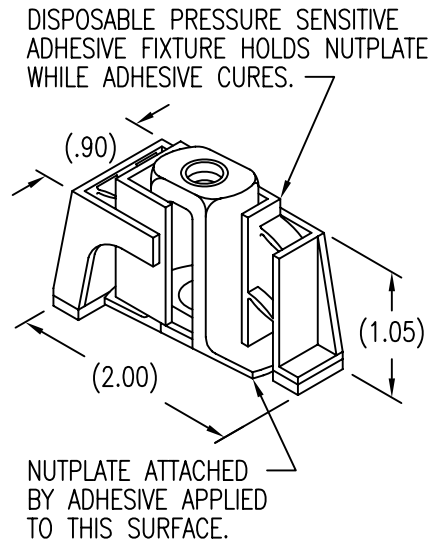
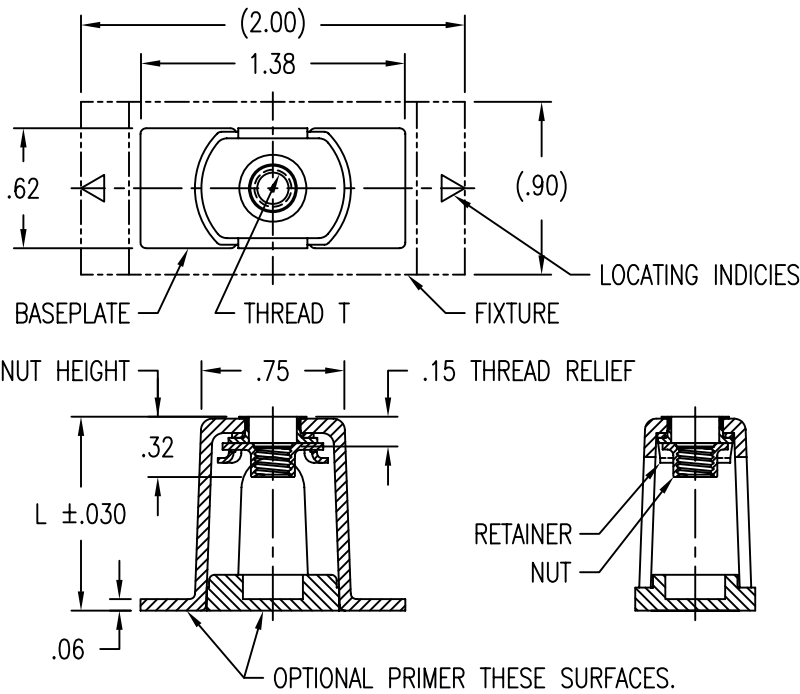


CARSON CITY NEVADA 89706

CAD CB4023-1

APPROVALS	DATE
DRAWN DAC	26SEP07
CHECKED DAC	26SEP07
RELEASED CGH	26SEP07
REVISED DAC	26SEP07

TITLE			
NUTPLATE, STANDOFF, COMPOSITE			
SIZE	CAGE CODE	DWG. NO.	REV.
A	66530	CB4023	12
SCALE	1/1 26SEP07		SHEET 1 OF 2



NUT AND RETAINER MATERIAL AND FINISH DATA

CODE	NUT MATERIAL	SPEC.	DRI-FILM LUBE	RETAINER MATERIAL	SPEC.	PASSIVATE
CR	A-286 CRES	AMS 5525	AS5272 TYPE 1	A-286, 304, 305 CRES	AMS 5525, 5639, 5514	AMS 2700

BASEPLATE MATERIAL

CODE	MATERIAL
U	GLASS/PEI, 30% GLASS
UC	CARBON/PEI, 30% CARBON
V	GLASS/PEI, 40% GLASS
VC	CARBON/PEI, 40% CARBON
W	GLASS/PEI, 30% GLASS *
WC	CARBON/PEI, 30% CARBON *

LENGTH L DATA

CODE	L
8	.500
12	.750
16	1.000
24	1.500
32	2.000

THREAD DATA AND RECOMMENDED SCREW TIGHTENING TORQUE

CODE	THREAD SIZE T	SPEC.	INSTALLATION TORQUE (IN-LBS)
08	.1640-32 UNJC-3B	AS8879	15-20
3	.1900-32 UNJF-3B		25-35
4M	MJ4 X 0,7 4H6H	ISO 5855	15-20
5M	MJ5 X 0,8 4H6H		25-35

\* LOW HEAT RELEASE

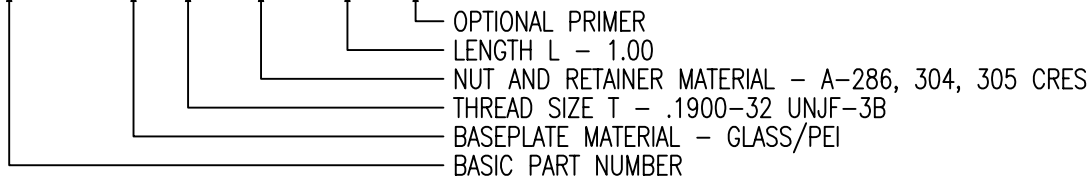
OPTIONAL BASEPLATE PRIMER

CODE	MATERIAL SPEC.
P	MIL-PRF-85582

RADIAL FLOAT OF NUT .030 MIN FROM CENTER.  
 SCREW CAN ENGAGE MAX MISALIGNED NUT.  
 THREAD LOCK BY ELLIPTICAL DEFORMATION.  
 STRENGTH REQUIREMENT: WILL WITHSTAND  
 A 50 LB LOAD APPLIED IN ANY DIRECTION.

EXAMPLE PART NUMBER

CB4023 V 3 CR 16 P



UNLESS OTHERWISE SPECIFIED, ALL DIMENSIONS ARE IN INCHES AND TOLERANCES ARE AS SHOWN BELOW. DIMENSIONAL TOLERANCES AND SYMBOLS PER ANSI Y14.5M-1982.

PROPRIETARY PARTS SHOWN IN THIS DRAWING ARE THE SUBJECT OF ISSUED UNITED STATES AND FOREIGN PATENTS AND PATENTS PENDING. UNAUTHORIZED REPRODUCTION AND/OR DISTRIBUTION OF THIS DRAWING IS SPECIFICALLY PROHIBITED.

**CLICK BOND**

CARSON CITY  
NEVADA 89706

CAD CB4023-2

APPROVALS	DATE
DRAWN <i>DAC</i>	26SEP07
CHECKED <i>DAC</i>	26SEP07
RELEASED <i>CGH</i>	26SEP07
REVISED <i>DAC</i>	26SEP07

TITLE			
NUTPLATE, STANDOFF, COMPOSITE			
SIZE	CAGE CODE	DWG. NO.	REV.
A	66530	CB4023	12
SCALE	1/1	26SEP07	SHEET 2 OF 2