

MATERIAL AND FINISH DATA

CODE	MATERIAL	SPEC.	FINISH	SPEC.
A	7075-T6 ALUMINUM	AMS 4122, QQ-A-225/9	ANODIZE	MIL-A-8625, TYPE 1, NO SEAL
CR	302, 303, 304, OR A-286 CRES	AMS 5637, 5638, 5639, 5640, 5641 AMS 5726, 5731, 5732, 5734, 5737	PASSIVATE	AMS-QQ-P-35
CRA	A-286 CRES	AMS 5726, 5731, 5732, 5734, 5737	PASSIVATE	AMS-QQ-P-35
CRM	316 CRES	AMS 5648, 5649, 5653	PASSIVATE	AMS-QQ-P-35
T	6AL-4V TITANIUM	AMS 4928, 4965, 4967	NONE	

DIMENSION DATA

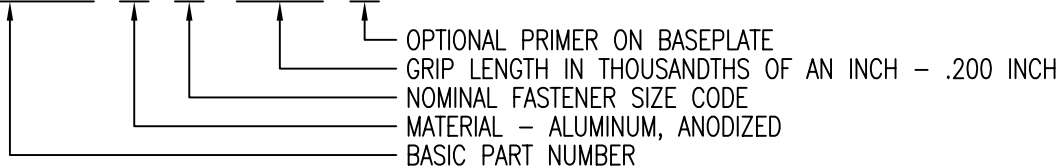
CODE	H DIA	A DIA	B DIA
06	.1410	.250	.62
08	.1720	.250	.62
3	.1940	.312	.75
4	.2570	.375	1.00

OPTIONAL PRIMER

CODE	MATERIAL	SPEC.
P	EPOXY PRIMER	MIL-PRF-85582

EXAMPLE PART NUMBER

CB5007 A 3-200 P



UNLESS OTHERWISE SPECIFIED, ALL DIMENSIONS ARE IN INCHES AND TOLERANCES ARE AS SHOWN BELOW. DIMENSIONAL TOLERANCES AND SYMBOLS PER ANSI Y14.5M-1982.

PROPRIETARY PARTS SHOWN IN THIS DRAWING ARE THE SUBJECT OF ISSUED UNITED STATES AND FOREIGN PATENTS AND PATENTS PENDING. UNAUTHORIZED REPRODUCTION AND/OR DISTRIBUTION OF THIS DRAWING IS SPECIFICALLY PROHIBITED.

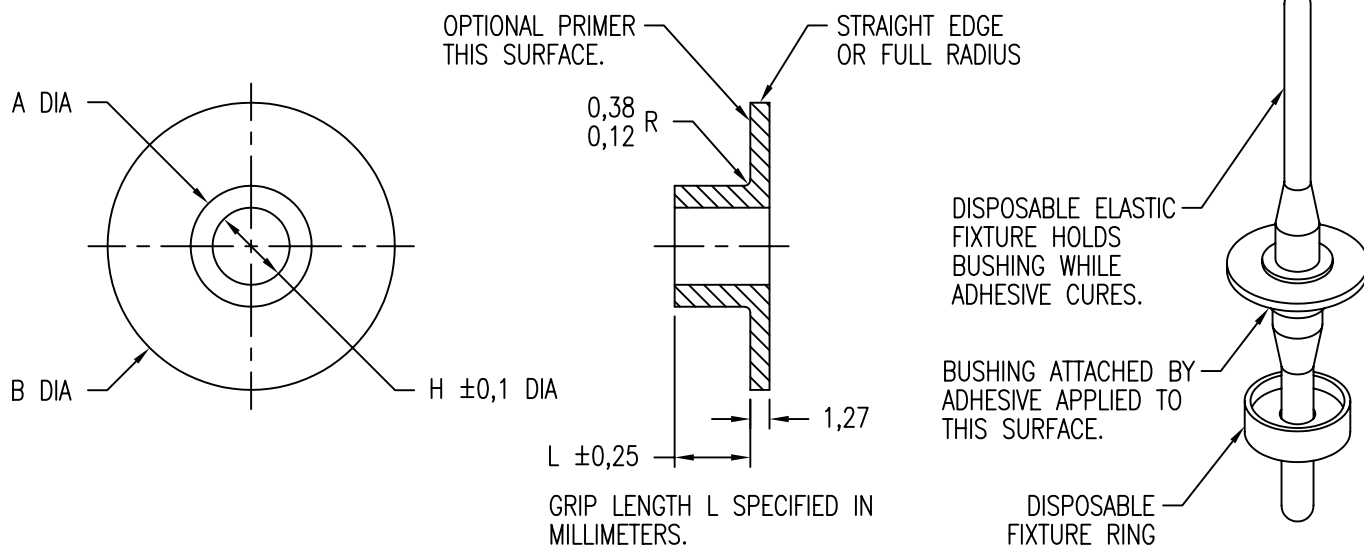
GLICK BOND

CARSON CITY
NEVADA 89706

CAD CB5007-1

APPROVALS	DATE
DRAWN BPerez	3SEP04
CHECKED DOC/John	3SEP04
RELEASED CGH	12SEP04
REVISED BPerez	3SEP04

TITLE			
BUSHING, PLAIN, ADHESIVE BONDED			
SIZE	CAGE CODE	DWG. NO.	REV.
A	66530	CB5007	5
SCALE	2/1 3SEP04		SHEET 1 OF 2



MATERIAL AND FINISH DATA

CODE	MATERIAL	SPEC.	FINISH	SPEC.
A	7075-T6 ALUMINUM	AMS 4122, QQ-A-225/9	ANODIZE	MIL-A-8625, TYPE 1, NO SEAL
CR	302, 303, 304, OR A-286 CRES	AMS 5637, 5638, 5639, 5640, 5641 AMS 5726, 5731, 5732, 5734, 5737	PASSIVATE	AMS-QQ-P-35
CRA	A-286 CRES	AMS 5726, 5731, 5732, 5734, 5737	PASSIVATE	AMS-QQ-P-35
CRM	316 CRES	AMS 5648, 5649, 5653	PASSIVATE	AMS-QQ-P-35
T	6AL-4V TITANIUM	AMS 4928, 4965, 4967	NONE	

DIMENSION DATA

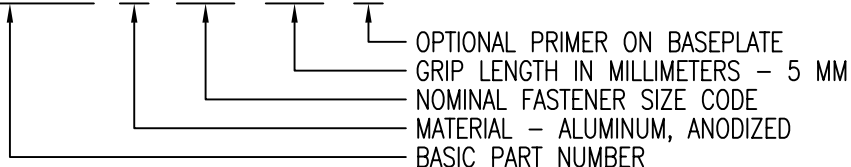
CODE	H DIA	A DIA	B DIA
3M	3,1	6,5	16,0
4M	4,1	6,5	16,0
5M	5,1	8,0	19,0
6M	6,1	9,5	25,0
10M	10,1	16,0	38,0

OPTIONAL PRIMER

CODE	MATERIAL	SPEC.
P	EPOXY PRIMER	MIL-PRF-85582

EXAMPLE PART NUMBER

CB5007 A 5M 5M P



UNLESS OTHERWISE SPECIFIED, ALL DIMENSIONS ARE IN MILLIMETERS AND TOLERANCES ARE AS SHOWN BELOW. DIMENSIONAL TOLERANCES AND SYMBOLS PER ANSI Y14.5M-1982.

PROPRIETARY PARTS SHOWN IN THIS DRAWING ARE THE SUBJECT OF ISSUED UNITED STATES AND FOREIGN PATENTS AND PATENTS PENDING. UNAUTHORIZED REPRODUCTION AND/OR DISTRIBUTION OF THIS DRAWING IS SPECIFICALLY PROHIBITED.

GLICK BOND

CARSON CITY
NEVADA 89706

CAD CB5007-2
METRIC DIMENSIONS

APPROVALS	DATE
DRAWN BPEREZ	3SEP04
CHECKED DOC	12SEP04
RELEASED CGH	12SEP04
REVISED BPEREZ	3SEP04

TITLE
BUSHING, PLAIN, ADHESIVE BONDED

ANGLES	$\pm 1^\circ$
.X	$\pm 0,8$
.XX	$\pm 0,25$

SIZE	CAGE CODE	DWG. NO.	REV.
A	66530	CB5007 (METRIC)	5
SCALE	2/1	3SEP04	SHEET 2 OF 2