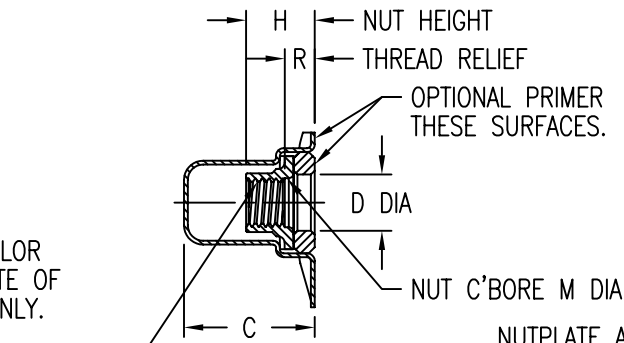


RED PAINT DOT COLOR CODE ON BASEPLATE OF 08 THREAD SIZE ONLY.  
MFG. I.D.



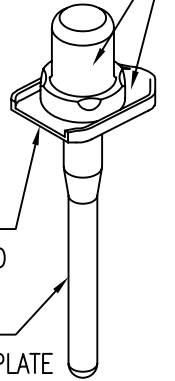
THREAD T  
THREAD PER AS8879.  
RADIAL FLOAT OF NUT ELEMENT .020 MIN FROM CENTER LINE IN ANY DIRECTION. THREAD LOCK BY ELLIPTICAL DEFORMATION.

NUTPLATE ATTACHED BY ADHESIVE APPLIED TO THIS SURFACE.

DISPOSABLE ELASTIC FIXTURE HOLDS NUTPLATE WHILE ADHESIVE CURES.

OPTIONAL TOPCOAT THESE SURFACES.

OPTIONAL PRIMER THESE SURFACES.



THREAD AND DIMENSION DATA (ALL DIMENSIONS BEFORE PAINT)

PART NUMBER	THREAD T	A MAX	B MAX	C MAX	D MIN	E MAX	F MAX	H MAX	R MIN	M MIN
CB8008( )08( )2	.1640-32 UNJC-3B	.813	.580	.637	.204	.312	.800	.325	.125	.168
CB8008( )3( )2				.637				.320	.125	
CB8008( )3( )3				.700				.383	.187	
CB8008( )3( )4				.762				.445	.250	
CB8008( )3( )5				.825				.508	.312	
CB8008( )3( )6	.1900-32 UNJF-3B	.813	.580	.887	.230	.312	.800	.570	.375	
CB8008( )3( )7				.950				.633	.437	
CB8008( )3( )8				1.012				.695	.500	
CB8008( )4( )2				.2500-28 UNJF-3B				.925	.725	
CB8008( )4( )3	.754	.428	.187							
CB8008( )4( )4	.816	.490	.250							
CB8008( )4( )5	.879	.553	.312		.254					
CB8008( )4( )6				.941				.615	.375	
CB8008( )4( )7				1.004				.678	.437	
CB8008( )4( )8				1.066				.740	.500	
CB8008( )5( )2				.3125-24 UNJF-3B				1.037	.807	
CB8008( )5( )3	.848	.462	.187							
CB8008( )5( )4	.910	.524	.250							
CB8008( )5( )5	.973	.586	.312		.317					
CB8008( )5( )6				1.035				.649	.375	
CB8008( )5( )7				1.098				.711	.437	
CB8008( )5( )8				1.160				.774	.500	
CB8008( )6( )2				.3750-24 UNJF-3B				1.21	.990	
CB8008( )7( )2	.4375-20 UNJF-3B	1.41	1.11	1.037	.478	.560	1.47	.560	.125	.441
CB8008( )8( )2	.5000-20 UNJF-3B	1.66	1.24	1.150	.540	.685	1.70	.640	.125	.504

UNLESS OTHERWISE SPECIFIED, ALL DIMENSIONS ARE IN INCHES AND TOLERANCES ARE AS SHOWN BELOW. DIMENSIONAL TOLERANCES AND SYMBOLS PER ANSI Y14.5M-1982.

PROPRIETARY PARTS SHOWN IN THIS DRAWING ARE THE SUBJECT OF ISSUED UNITED STATES AND FOREIGN PATENTS AND PATENTS PENDING. UNAUTHORIZED REPRODUCTION AND/OR DISTRIBUTION OF THIS DRAWING IS SPECIFICALLY PROHIBITED.

**GLICK BOND**

CARSON CITY  
NEVADA 89706

CAD CB8008-1

APPROVALS

DATE

TITLE

NUTPLATE, SEALED, ONE LUG

ANGLES ±1°

DRAWN DAC

12MAR06

.XX ±.03

CHECKED JCC/mtm

12MAR06

SIZE

CAGE CODE

DWG. NO.

REV.

.XXX ±.010

RELEASED CGH

12MAR06

A

66530

CB8008

0

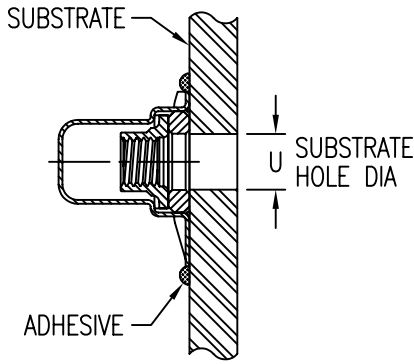
.XXXX ±.001

REVISED

SCALE 1/1

12MAR06

SHEET 1 OF 2



INSTALLATION HOLE SIZE

THREAD CODE	U MIN	U MAX
08	.164	.204
3	.190	.230
4	.250	.290
5	.312	.353
6	.375	.415
7	.437	.478
8	.500	.540

NUT MATERIAL AND FINISH DATA

CODE	MATERIAL	SPEC.	FINISH	SPEC.	DRI-FILM LUBE
-	A-286 CRES	AMS 5525, 5726, 5731, 5732, 5737	PASSIVATE	AMS 2700	AS5272 TY 1
CRC			CAD PLATE	AMS-QQ-P-416 TY II, CL 2	

WASHER MATERIAL AND FINISH DATA

CODE	MATERIAL	SPEC.	FINISH	SPEC.
CR	A-286 CRES	AMS 5525, 5726, 5731, 5732, 5737	PASSIVATE	AMS 2700
ACR	2024 OR 6061 ALUMINUM	AMS-QQ-A-200 OR AMS-QQ-A-225	ANODIZE	MIL-A-8625

DOME MATERIAL AND FINISH DATA

CODE	MATERIAL	SPEC.	PASSIVATE
CR	A-286 CRES	AMS 5525	AMS 2700
ACR			

OPTIONAL BASEPLATE PRIMER

CODE	MATERIAL SPEC.
P	MIL-PRF-85582

OPTIONAL TOPCOAT

CODE	MATERIAL SPEC.
F	AMS-C-27725A TYPE 2 YELLOW

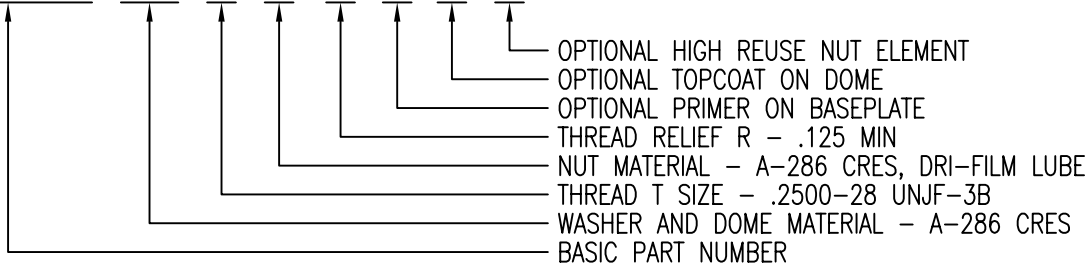
STRENGTH REQUIREMENTS: NUTPLATE TO MEET THE NASM25027 STRENGTH REQUIREMENTS.

REUSABILITY REQUIREMENTS:

- NO SUFFIX - NUT ELEMENT TO MEET THE NASM25027 LOCKING TORQUE REQUIREMENTS FOR 15 REUSE CYCLES.
- "R" SUFFIX - NUT ELEMENT TO MEET THE NASM25027 LOCKING TORQUE REQUIREMENTS FOR 50 REUSE CYCLES.

EXAMPLE PART NUMBER

CB8008 CR 4 - 2 P F R



UNLESS OTHERWISE SPECIFIED, ALL DIMENSIONS ARE IN INCHES AND TOLERANCES ARE AS SHOWN BELOW. DIMENSIONAL TOLERANCES AND SYMBOLS PER ANSI Y14.5M-1982.

PROPRIETARY PARTS SHOWN IN THIS DRAWING ARE THE SUBJECT OF ISSUED UNITED STATES AND FOREIGN PATENTS AND PATENTS PENDING. UNAUTHORIZED REPRODUCTION AND/OR DISTRIBUTION OF THIS DRAWING IS SPECIFICALLY PROHIBITED.



CARSON CITY  
NEVADA 89706

CAD CB8008-2		APPROVALS	DATE	TITLE		
ANGLES	±1°	DRAWN	12MAR06	NUTPLATE, SEALED, ONE LUG		
.XX	±.03	CHECKED	12MAR06	SIZE	CAGE CODE	DWG. NO.
.XXX	±.010	RELEASED	12MAR06	A	66530	CB8008
.XXXX	±.001	REVISED		SCALE	1/1	12MAR06
						SHEET 2 OF 2