

THREAD AND DIMENSION DATA (ALL DIMENSIONS BEFORE PAINT)

PART NUMBER	THREAD SIZE	A MAX	B MAX	D MIN	H MAX	R MIN	WEIGHT * (A-286 CRES) LB/100	WEIGHT * (ALUMINUM) LB/100
CB8009()08()1	.1640-32 UNJC-3B	.745	.454	.224	.250	.070	.54	.33
CB8009()3()1					.250	.070	.57	.36
CB8009()3()2					.312	.125	.62	.41
CB8009()3()3					.375	.188	.67	.46
CB8009()3()4					.438	.250	.74	.53
CB8009()3()5					.500	.313	.78	.57
CB8009()3()6					.562	.375	.83	.62
CB8009()3()7					.625	.438	.88	.67
CB8009()3()8	.1900-32 UNJF-3B	.745	.454	.250	.687	.500	.93	.72
CB8009()4()1					.295	.070	1.04	.69
CB8009()4()2					.357	.125	1.09	.74
CB8009()4()3					.419	.188	1.13	.78
CB8009()4()4					.481	.250	1.22	.87
CB8009()4()5					.543	.313	1.31	.96
CB8009()4()6					.605	.375	1.41	1.05
CB8009()5()1					.2500-28 UNJF-3B	.948	.554	.312
CB8009()5()2	.400	.125	1.58	1.08				
CB8009()5()3	.461	.188	1.69	1.19				
CB8009()5()4	.524	.250	1.81	1.31				
CB8009()5()5	.586	.313	1.92	1.42				
CB8009()5()6	.649	.375	2.03	1.53				
CB8009()6()1	.3125-24 UNJF-3B	1.042	.650	.375	.380	.070	2.40	1.58
CB8009()6()2					.430	.125	2.52	1.70
CB8009()6()3					.500	.188	2.64	1.82
CB8009()6()1	.3750-24 UNJF-3B	1.182	.750	.437	.380	.070	2.40	1.58
CB8009()6()2					.430	.125	2.52	1.70
CB8009()6()3					.500	.188	2.64	1.82

* APPROXIMATE WEIGHT WITHOUT INSTALLATION FIXTURE (BASEPLATE MATERIAL IN PARENTHESIS)

UNLESS OTHERWISE SPECIFIED, ALL DIMENSIONS ARE IN INCHES AND TOLERANCES ARE AS SHOWN BELOW. DIMENSIONAL TOLERANCES AND SYMBOLS PER ANSI Y14.5M-1982.

THE PARTS SHOWN IN THIS DRAWING ARE PROPRIETARY AND MAY BE THE SUBJECT OF ISSUED UNITED STATES AND FOREIGN PATENTS AND PATENTS PENDING. UNAUTHORIZED REPRODUCTION AND/OR DISTRIBUTION OF THIS DRAWING IS SPECIFICALLY PROHIBITED.

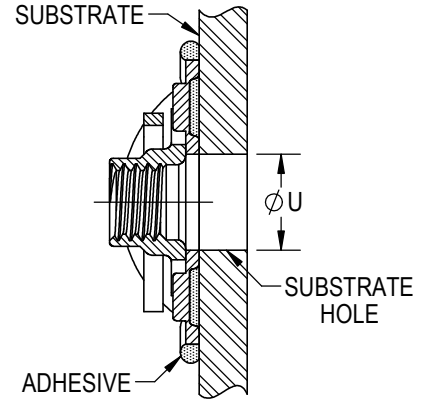


2151 LOCKHEED WAY
CARSON CITY, NEVADA 89706

APPROVALS		DATE		TITLE			
ANGLES	±1°	DRAWN	GTP	NUTPLATE, TWO LUG, ADHESIVE BONDED			
.XX	±.03	CHECKED	<i>DD Carter</i>	SIZE	CAGE CODE	DWG. NO.	REV.
.XXX	±.010	RELEASED	RPP	A	66530	CB8009	10
.XXXX	±.001	REVISED	GTP	SCALE: 2:1		21AUG19	SHEET 1 OF 4

INSTALLATION HOLE SIZE

SIZE	ØU
08	.164 - .224
3	.190 - .250
4	.250 - .312
5	.312 - .375
6	.375 - .437



BASEPLATE MATERIAL AND FINISH DATA

CODE	MATERIAL	SPEC.	FINISH	SPEC.
A	ALUMINUM	AMS-QQ-A-250	NONE	
AA	ALUMINUM	AMS-QQ-A-250	ANODIZE	MIL-A-8625 TYPE 1
CR	A-286 CRES	AMS 5525	PASSIVATE	AMS 2700

NUT MATERIAL AND FINISH DATA (SEE CB8001)

CODE	MATERIAL	FINISH	SPEC.	DRI-FILM LUBE	REUSABILITY TEST BOLT
-	A-286 CRES	PASSIVATE	AMS 2700	AS5272	CRES
CRT	A-286 CRES	COPPER PLATE	AMS 2418		TITANIUM

RETAINING CLIP MATERIAL AND FINISH DATA (SEE CB8002)

MATERIAL	SPEC.	PASSIVATE
XM-28 (UNS S24100) STAINLESS STEEL SPRING WIRE	ASTM A313/A313M	AMS 2700

PART NUMBER SUFFIXES

SUFFIX	DESCRIPTION
NL	NON-LOCKING NUT ELEMENT
R	THREAD LOCK MEETS NASM25027 REUSE REQUIREMENTS FOR 50 REUSE CYCLES

NOTE: PART NUMBER CB8009CR2-1 IS INACTIVE FOR NEW DESIGN, USE CB8009CR08-1 (NUTPLATE DESIGN UNCHANGED)

EXAMPLE PART NUMBER

CB8009 CR 3 - 1 P R

- OPTIONAL HIGH REUSE NUT ELEMENT
- OPTIONAL MIL-PRF-85582 BASEPLATE PRIMER
- THREAD RELIEF CODE
- NUT MATERIAL - A-286 CRES, DRI-FILM LUBE
- THREAD SIZE - .1900-32 UNJF-3B
- BASEPLATE MATERIAL - A-286 CRES
- BASIC PART NUMBER

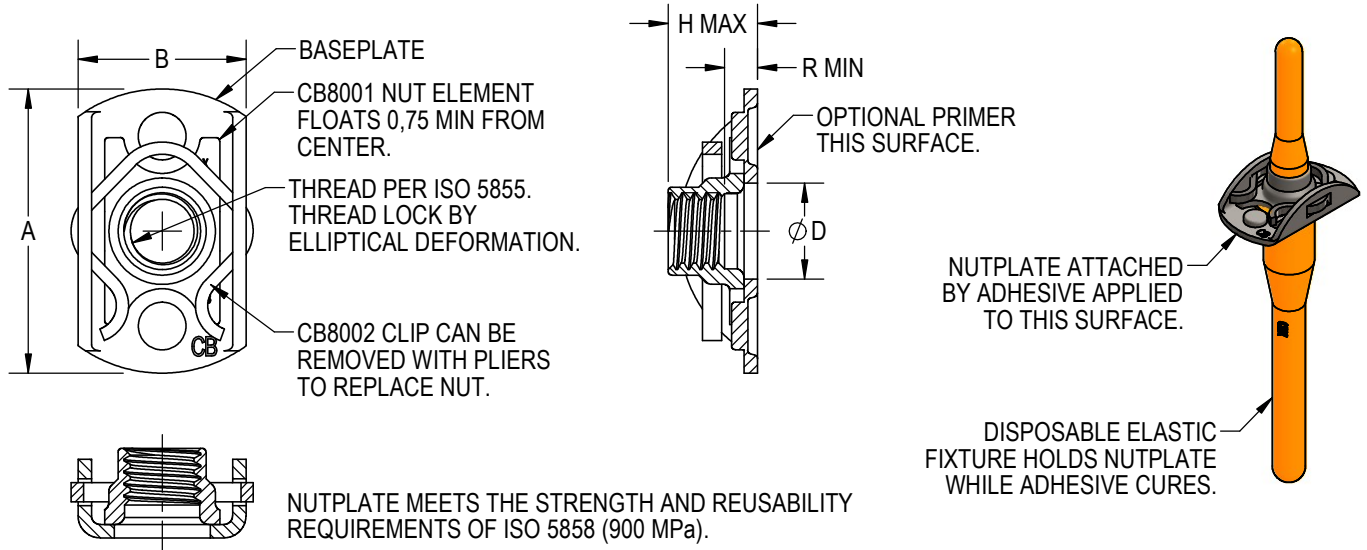
UNLESS OTHERWISE SPECIFIED, ALL DIMENSIONS ARE IN INCHES AND TOLERANCES ARE AS SHOWN BELOW. DIMENSIONAL TOLERANCES AND SYMBOLS PER ANSI Y14.5M-1982.

THE PARTS SHOWN IN THIS DRAWING ARE PROPRIETARY AND MAY BE THE SUBJECT OF ISSUED UNITED STATES AND FOREIGN PATENTS AND PATENTS PENDING. UNAUTHORIZED REPRODUCTION AND/OR DISTRIBUTION OF THIS DRAWING IS SPECIFICALLY PROHIBITED.



2151 LOCKHEED WAY
CARSON CITY, NEVADA 89706

APPROVALS		DATE		TITLE			
ANGLES	±1°	DRAWN	GTP	NUTPLATE, TWO LUG, ADHESIVE BONDED			
.XX	±.03	CHECKED	<i>D. Carter</i>	SIZE	CAGE CODE	DWG. NO.	REV.
.XXX	±.010	RELEASED	RPP	A	66530	CB8009	10
.XXXX	±.001	REVISED	GTP	SCALE: 2:1		21AUG19	SHEET 2 OF 4



THREAD AND DIMENSION DATA (ALL DIMENSIONS BEFORE PAINT)

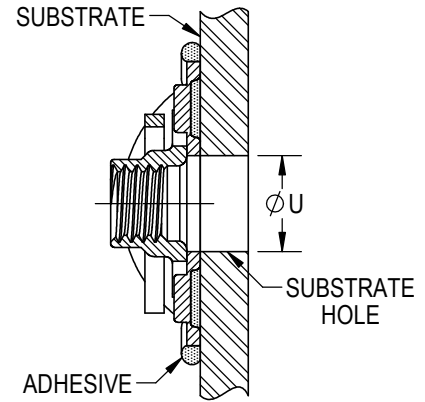
PART NUMBER	THREAD SIZE	A MAX	B MAX	D MIN	H MAX	R MIN	WEIGHT * (A-286 CRES) grams	WEIGHT * (ALUMINUM) grams
CB8009()4M()	MJ4 X 0,7 4H6H	19,0	11,6	5,50	5,2	1,6	2,6	1,6
CB8009()5M()	MJ5 X 0,8 4H6H	19,0	11,6	6,35	6,2	1,6	2,7	1,7
CB8009()5M()4					8,0	4,0	3,0	2,0
CB8009()5M()6					10,0	6,0	3,3	2,3
CB8009()5M()8					12,0	8,0	3,6	2,6
CB8009()5M()10					14,0	10,0	3,9	2,9
CB8009()5M()12					16,0	12,0	4,2	3,2
CB8009()6M()	MJ6 X 1,0 4H5H	24,1	14,1	7,50	7,1	1,6	4,8	3,1
CB8009()6M()4					9,0	4,0	5,3	3,7
CB8009()6M()6					11,0	6,0	5,9	4,2
CB8009()6M()8					13,0	8,0	6,4	4,7
CB8009()6M()10					15,0	10,0	6,9	5,3
CB8009()6M()12					17,0	12,0	7,4	5,8
CB8009()8M()	MJ8 X 1,0 4H5H	26,5	16,6	9,50	8,2	1,6	7,1	4,7
CB8009()8M()4					11,0	4,0	7,9	5,6
CB8009()8M()6					13,0	6,0	8,6	6,2
CB8009()8M()8					15,0	8,0	9,2	6,9
CB8009()8M()10					17,0	10,0	9,9	7,5
CB8009()8M()12					19,0	12,0	10,6	8,2
CB8009()10M()	MJ10 X 1,25 4H5H	30,1	19,1	11,10	9,9	1,6	11,4	7,5

* APPROXIMATE WEIGHT WITHOUT INSTALLATION FIXTURE (BASEPLATE MATERIAL IN PARENTHESIS)

UNLESS OTHERWISE SPECIFIED, ALL DIMENSIONS ARE IN MILLIMETERS AND TOLERANCES ARE AS SHOWN BELOW. DIMENSIONAL TOLERANCES AND SYMBOLS PER ANSI Y14.5M-1982.	THE PARTS SHOWN IN THIS DRAWING ARE PROPRIETARY AND MAY BE THE SUBJECT OF ISSUED UNITED STATES AND FOREIGN PATENTS AND PATENTS PENDING. UNAUTHORIZED REPRODUCTION AND/OR DISTRIBUTION OF THIS DRAWING IS SPECIFICALLY PROHIBITED.		CLICK BOND		2151 LOCKHEED WAY CARSON CITY, NEVADA 89706	
	APPROVALS				TITLE	
METRIC DIMENSIONS	DRAWN GTP	DATE 21AUG19	NUTPLATE, TWO LUG, ADHESIVE BONDED			
ANGLES ±1°	CHECKED <i>DD Carter</i>	DATE 21AUG19	SIZE A	CAGE CODE 66530	DWG. NO. CB8009 (METRIC)	REV. 10
.X ±0,8	RELEASED RPP	DATE 21AUG19	SCALE: 2:1		21AUG19	SHEET 3 OF 4
.XX ±0,25	REVISED GTP	DATE 21AUG19				

INSTALLATION HOLE SIZE

SIZE	ØU
4M	4,00 - 5,50
5M	5,00 - 6,35
6M	6,00 - 7,50
8M	8,00 - 9,50
10M	10,00 - 11,10



BASEPLATE MATERIAL AND FINISH DATA

CODE	MATERIAL	SPEC.	FINISH	SPEC.
A	ALUMINUM	AMS-QQ-A-250	NONE	
AA	ALUMINUM	AMS-QQ-A-250	ANODIZE	MIL-A-8625 TYPE 1
CR	A-286 CRES	AMS 5525	PASSIVATE	AMS 2700

NUT MATERIAL AND FINISH DATA (SEE CB8001)

CODE	MATERIAL	FINISH	SPEC.	DRI-FILM LUBE	RESUABILITY TEST BOLT
NONE	A-286 CRES	PASSIVATE	AMS 2700	AS5272	CRES
CRT	A-286 CRES	COPPER PLATE	AMS 2418		TITANIUM

RETAINING CLIP MATERIAL AND FINISH DATA (SEE CB8002)

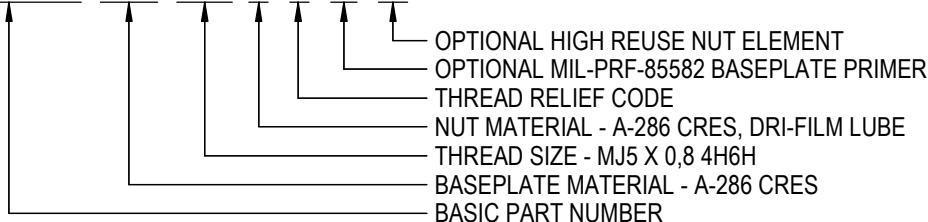
MATERIAL	SPEC.	PASSIVATE
XM-28 (UNS S24100) STAINLESS STEEL SPRING WIRE	ASTM A313/A313M	AMS 2700

PART NUMBER SUFFIXES

SUFFIX	DESCRIPTION
NL	NON-LOCKING NUT ELEMENT
R	THREAD LOCK MEETS ISO5858 REUSE REQUIREMENTS FOR 50 REUSE CYCLES

EXAMPLE PART NUMBER

CB8009 CR 5M P R



UNLESS OTHERWISE SPECIFIED, ALL DIMENSIONS ARE IN MILLIMETERS AND TOLERANCES ARE AS SHOWN BELOW. DIMENSIONAL TOLERANCES AND SYMBOLS PER ANSI Y14.5M-1982.

THE PARTS SHOWN IN THIS DRAWING ARE PROPRIETARY AND MAY BE THE SUBJECT OF ISSUED UNITED STATES AND FOREIGN PATENTS AND PATENTS PENDING. UNAUTHORIZED REPRODUCTION AND/OR DISTRIBUTION OF THIS DRAWING IS SPECIFICALLY PROHIBITED.



2151 LOCKHEED WAY
CARSON CITY, NEVADA 89706

METRIC DIMENSIONS		APPROVALS	DATE	TITLE		
ANGLES	±1°	DRAWN GTP	21AUG19	NUTPLATE, TWO LUG, ADHESIVE BONDED		
.X	±0,8	CHECKED <i>D.C. Carter</i>	21AUG19	SIZE	CAGE CODE	DWG. NO.
.XX	±0,25	RELEASED RPP	21AUG19	A	66530	CB8009 (METRIC)
		REVISED GTP	21AUG19	SCALE: 2:1	21AUG19	REV. 10
						SHEET 4 OF 4