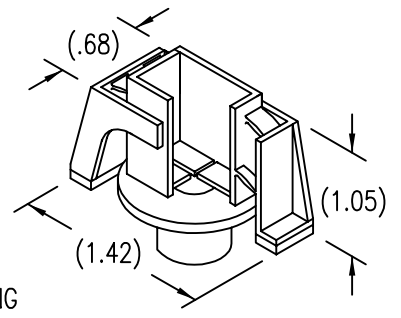


GRIP LENGTH L SPECIFIED
IN THOUSANDTHS OF AN INCH.
MINIMUM LENGTH AVAILABLE
AS PER TABLE.

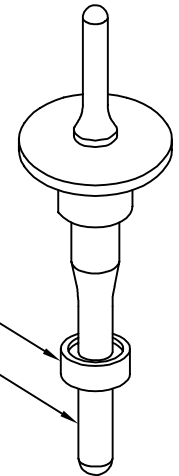
BUSHING MEETS TENSILE STRENGTH REQUIREMENTS
OF MIL-N-25027 FOR SHEAR NUTS.
DEBURR AND BREAK ALL EDGES .005 - .015.
SURFACE TEXTURE 125 MICROINCHES Ra MAX.

STANDARD FIXTURE
DISPOSABLE PRESSURE
SENSITIVE ADHESIVE
FIXTURE HOLDS BUSHING
WHILE ADHESIVE CURES.



OPTIONAL FIXTURE (E SUFFIX)

DISPOSABLE FIXTURE RING
DISPOSABLE ELASTIC
FIXTURE HOLDS BUSHING
WHILE ADHESIVE CURES.



DIMENSION DATA

CODE	THREAD T	A DIA	C REF	MINIMUM LENGTH L
08	.1640-32 UNC-3B	.281	.164	.130
3	.1900-32 UNF-3B	.312	.190	.155

THREAD T
MS21209 INSERT INSTALLED PER MS33537.
LUBE PER MIL-L-46010, TYPE 1.
THREAD LOCK PER MIL-N-25027.
ACCOMMODATES MIL-S-8879 UNJ THREAD SCREW.

MATERIAL AND FINISH DATA

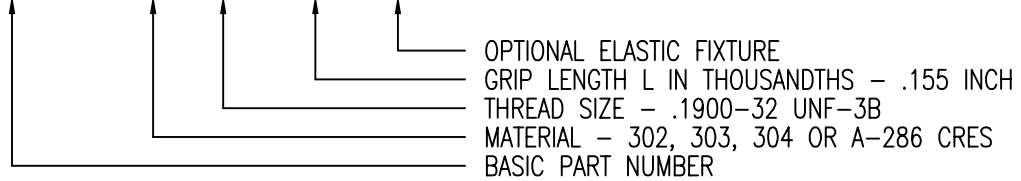
CODE	MATERIAL	SPEC.	FINISH	SPEC.
A	2024 OR 6061 ALUMINUM	QQ-A-200, QQ-A-225, OR QQ-A-250	ANODIZE	MIL-A-8625
CR	302, 303, 304, OR A-286 CRES	AMS 5637, 5638, 5639, 5640, 5641 AMS 5726, 5731, 5732, 5734, 5737	PASSIVATE	QQ-P-35
CRA	A-286 CRES	AMS 5726, 5731, 5732, 5734, 5737	PASSIVATE	QQ-P-35

OPTIONAL FIXTURE

CODE	FIXTURE
NONE	STANDARD RECTANGULAR FIXTURE
E	OPTIONAL ELASTIC FIXTURE

EXAMPLE PART NUMBER

CB9085 CR 3-155 E



UNLESS OTHERWISE SPECIFIED, ALL DIMENSIONS ARE
IN INCHES AND TOLERANCES ARE AS SHOWN BELOW.
DIMENSIONAL TOLERANCES AND SYMBOLS PER ANSI
Y14.5M-1982.

PROPRIETARY PARTS SHOWN IN THIS DRAWING ARE THE SUBJECT
OF ISSUED UNITED STATES AND FOREIGN PATENTS AND PATENTS
PENDING.
UNAUTHORIZED REPRODUCTION AND/OR DISTRIBUTION OF THIS
DRAWING IS SPECIFICALLY PROHIBITED.

CLICK BOND

CARSON CITY
NEVADA 89706

		APPROVALS	DATE
ANGLES	±1°	DRAWN TRH	15SEP98
.XX	±.03	CHECKED CGH	16SEP98
.XXX	±.010	RELEASED CGH	16SEP98
.XXXX	±.001	REVISED TRH	15SEP98

TITLE			
BUSHING, LOCKING THREAD, SMALL BASE			
SIZE	CAGE CODE	DWG. NO.	REV.
A	66530	CB9085	3
SCALE	2/1 15SEP98		SHEET 1 OF 1