

LENGTH L DATA (LENGTH CODE IN SIXTEENTHS OF AN INCH)

CODE	8	16	24	32	40	48	56	80
L	.50	1.00	1.50	2.00	2.50	3.00	3.50	5.00

DIMENSION DATA

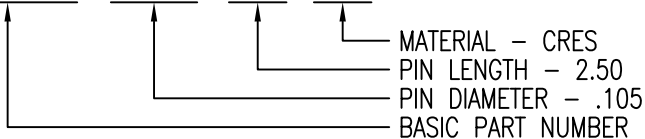
CODE	D DIA
105	.105

MATERIAL DATA

CODE	MATERIAL
A	ALUMINUM
CR	CRES

EXAMPLE PART NUMBER

CS120-105-40 CR



UNLESS OTHERWISE SPECIFIED, ALL DIMENSIONS ARE IN INCHES AND TOLERANCES ARE AS SHOWN BELOW. DIMENSIONAL TOLERANCES AND SYMBOLS PER ANSI Y14.5M-1982.

PROPRIETARY PARTS SHOWN IN THIS DRAWING ARE THE SUBJECT OF ISSUED UNITED STATES AND FOREIGN PATENTS AND PATENTS PENDING. UNAUTHORIZED REPRODUCTION AND/OR DISTRIBUTION OF THIS DRAWING IS SPECIFICALLY PROHIBITED.

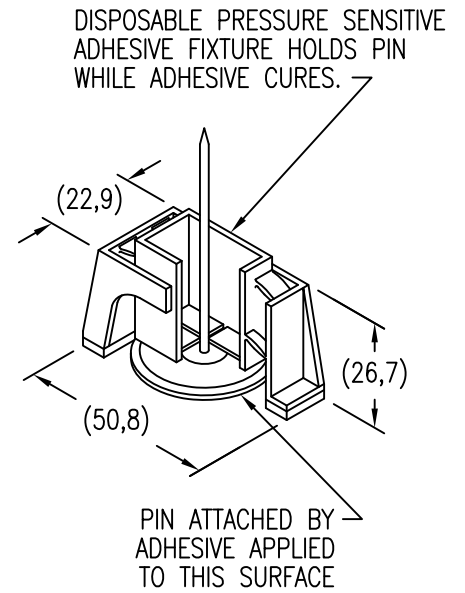
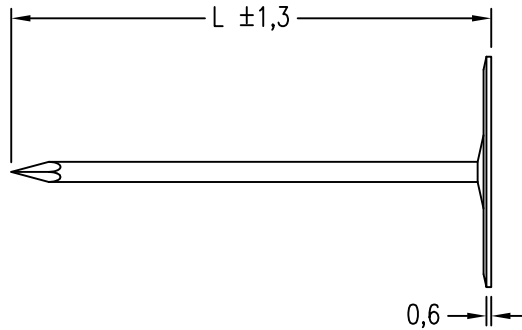
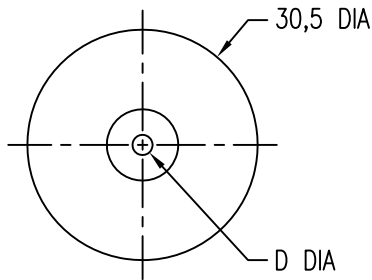
**CLICK BOND**

CARSON CITY  
NEVADA 89706

CAD CS120-1

APPROVALS	DATE
DRAWN <b>GTP</b>	17JUL13
CHECKED <i>JAC/mtm</i>	17JUL13
RELEASED <i>ABC/mtm</i>	17JUL13
REVISED <b>GTP</b>	17JUL13

TITLE PIN, INSULATION MOUNT			
SIZE A	CAGE CODE 66530	DWG. NO. CS120	REV. 2
SCALE 1/1	17JUL13		SHEET 1 OF 2



LENGTH L DATA (LENGTH CODE IN MILLIMETERS)

CODE	12M	25M	38M	50M	63M	76M	88M	127M
L	12,7	25,4	38,1	50,8	63,5	76,2	88,9	127,0

DIMENSION DATA

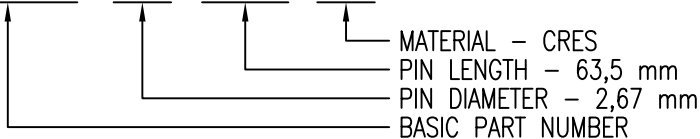
CODE	D DIA
2M	2,67

MATERIAL DATA

CODE	MATERIAL
A	ALUMINUM
CR	CRES

EXAMPLE PART NUMBER

CS120-2M 63M CR



UNLESS OTHERWISE SPECIFIED, ALL DIMENSIONS ARE IN MILLIMETERS AND TOLERANCES ARE AS SHOWN BELOW. DIMENSIONAL TOLERANCES AND SYMBOLS PER ANSI Y14.5M-1982.

PROPRIETARY PARTS SHOWN IN THIS DRAWING ARE THE SUBJECT OF ISSUED UNITED STATES AND FOREIGN PATENTS AND PATENTS PENDING. UNAUTHORIZED REPRODUCTION AND/OR DISTRIBUTION OF THIS DRAWING IS SPECIFICALLY PROHIBITED.

**CLICK BOND**

CARSON CITY  
NEVADA 89706

CAD CS120-2 METRIC DIMENSIONS	
ANGLES	±1°
.X	±0,8
.XX	±0,25

APPROVALS	DATE
DRAWN <b>GTP</b>	17JUL13
CHECKED <i>JAC</i>	17JUL13
RELEASED <i>ABC</i>	17JUL13
REVISED <b>GTP</b>	17JUL13

TITLE PIN, INSULATION MOUNT			
SIZE A	CAGE CODE 66530	DWG. NO. CS120 (METRIC)	REV. 2
SCALE 1/1	17JUL13	SHEET 2 OF 2	