



Visual Analysis of Reservoir Simulation Ensembles

Thomas Höllt^{1,2}, Fabio Miguel de Matos Ravanelli³,
Markus Hadwiger², and Ibrahim Hoteit²

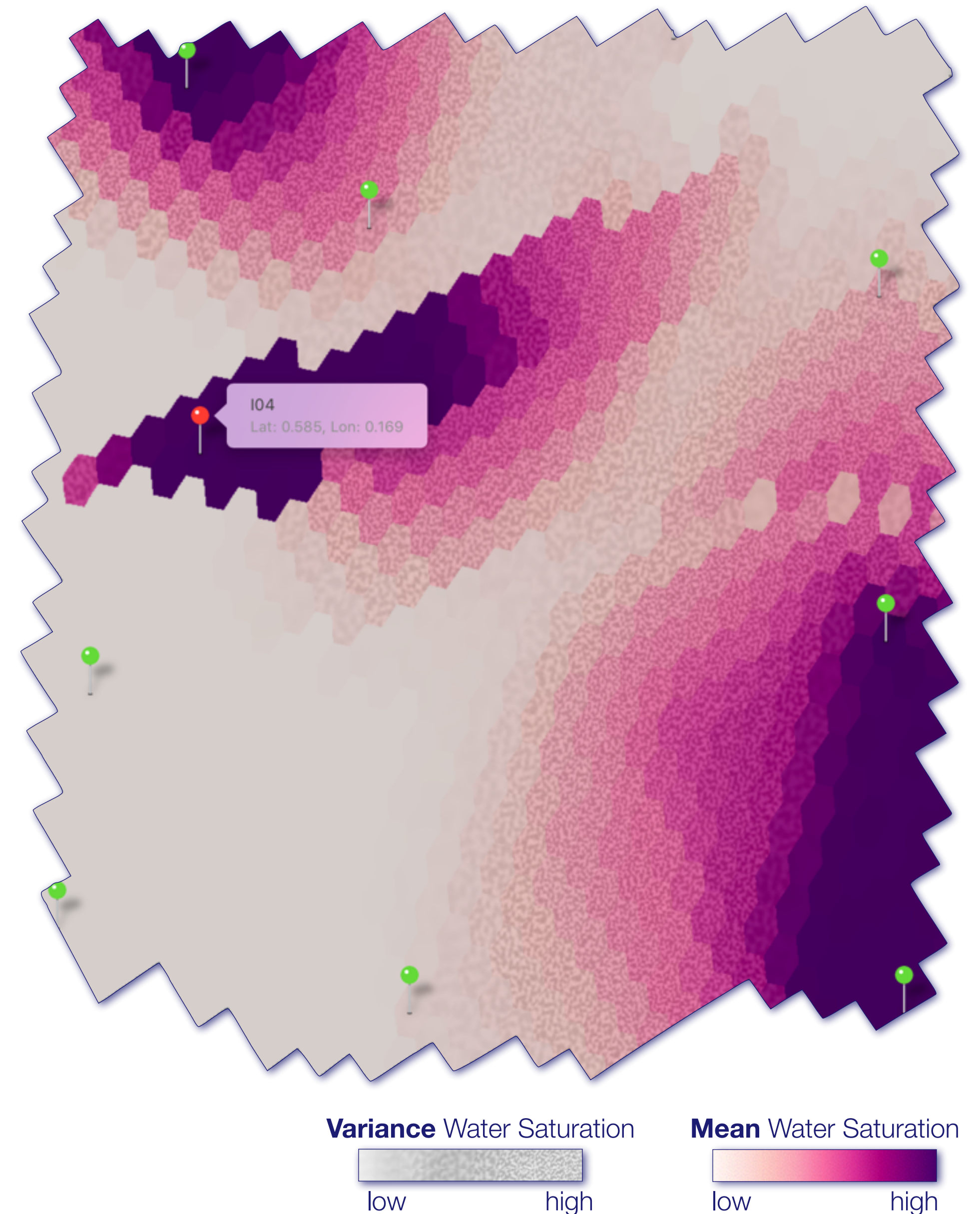
¹Computer Graphics and Visualization, TU Delft

²King Abdullah University of Science and Technology,

³Saudi Aramco

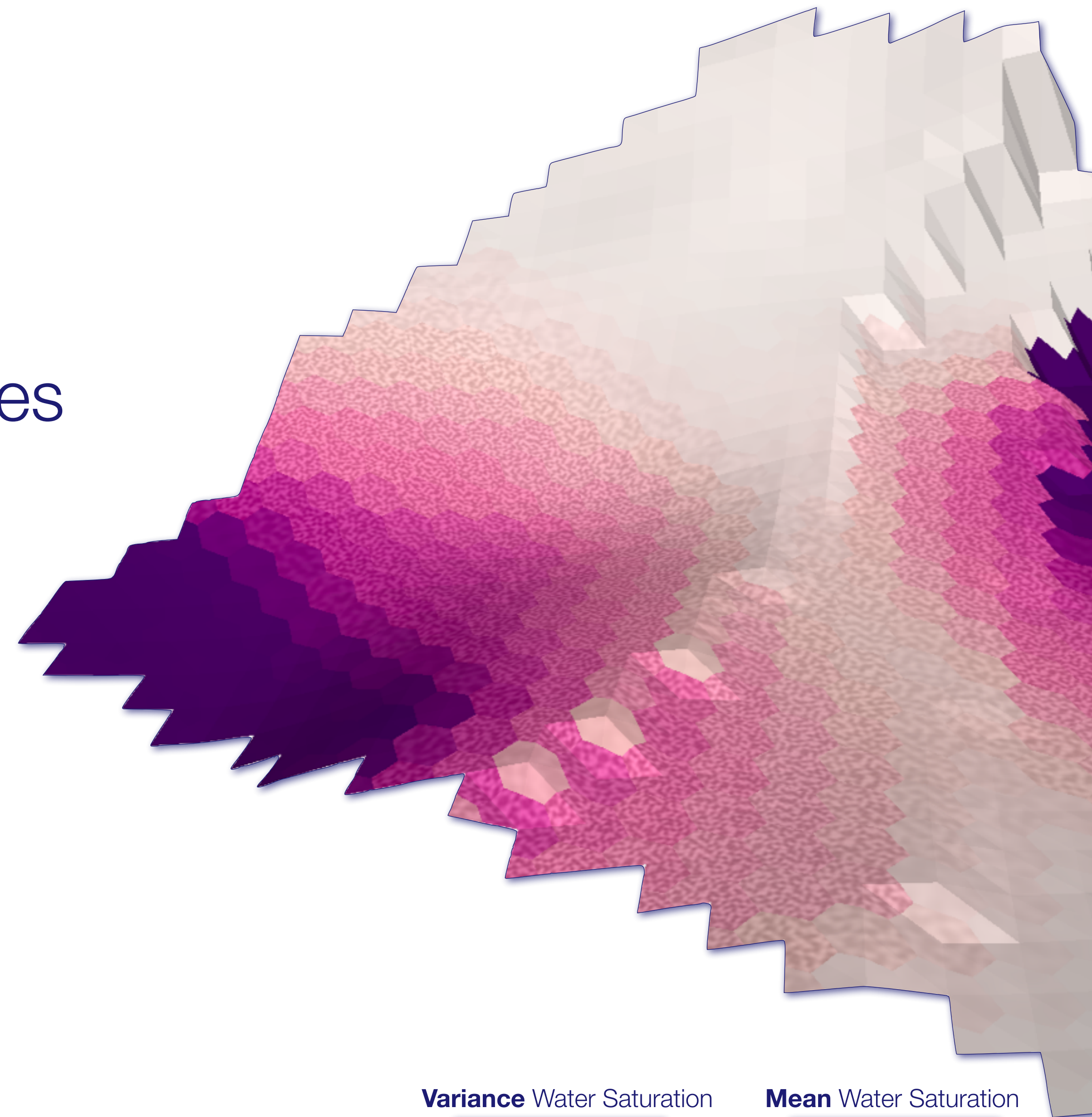
Motivation

- Forecast Oil & Gas production
- Optimal well placement planning
 - What is the net production difference?
 - What is the operational effort?
 - What is the time frame?
 - What is the uncertainty?



Data

- Large scale forecasts (tens of years)
 - 18 years monthly samples: 216 samples
- Ensemble simulation
 - 55 realizations per sample
- Multivariate / Multidimensional
 - 4 3D variables + 8 1D variables



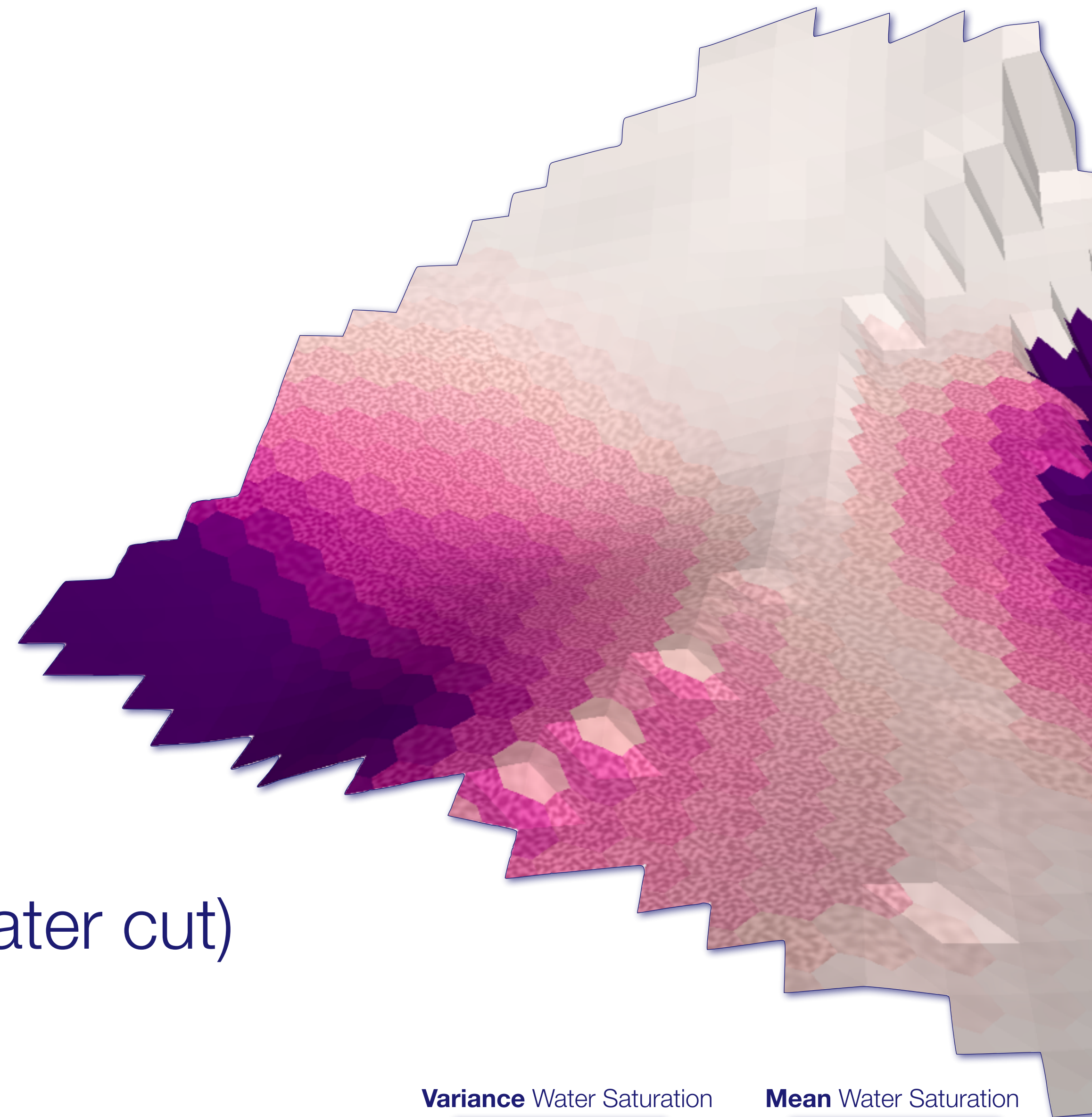
Variance Water Saturation
low high

Mean Water Saturation
low high

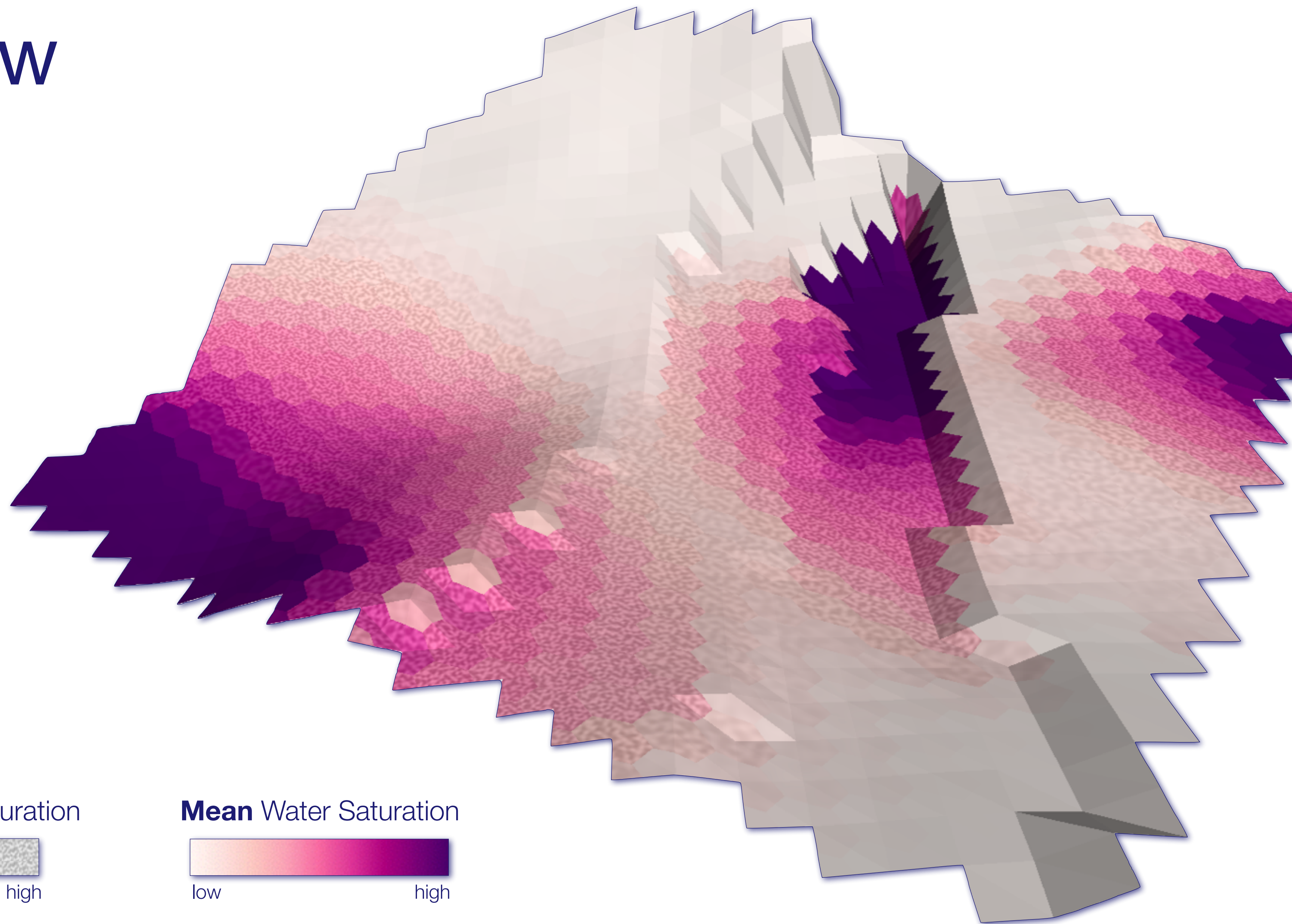
Visual Analysis System

Visual Analysis System

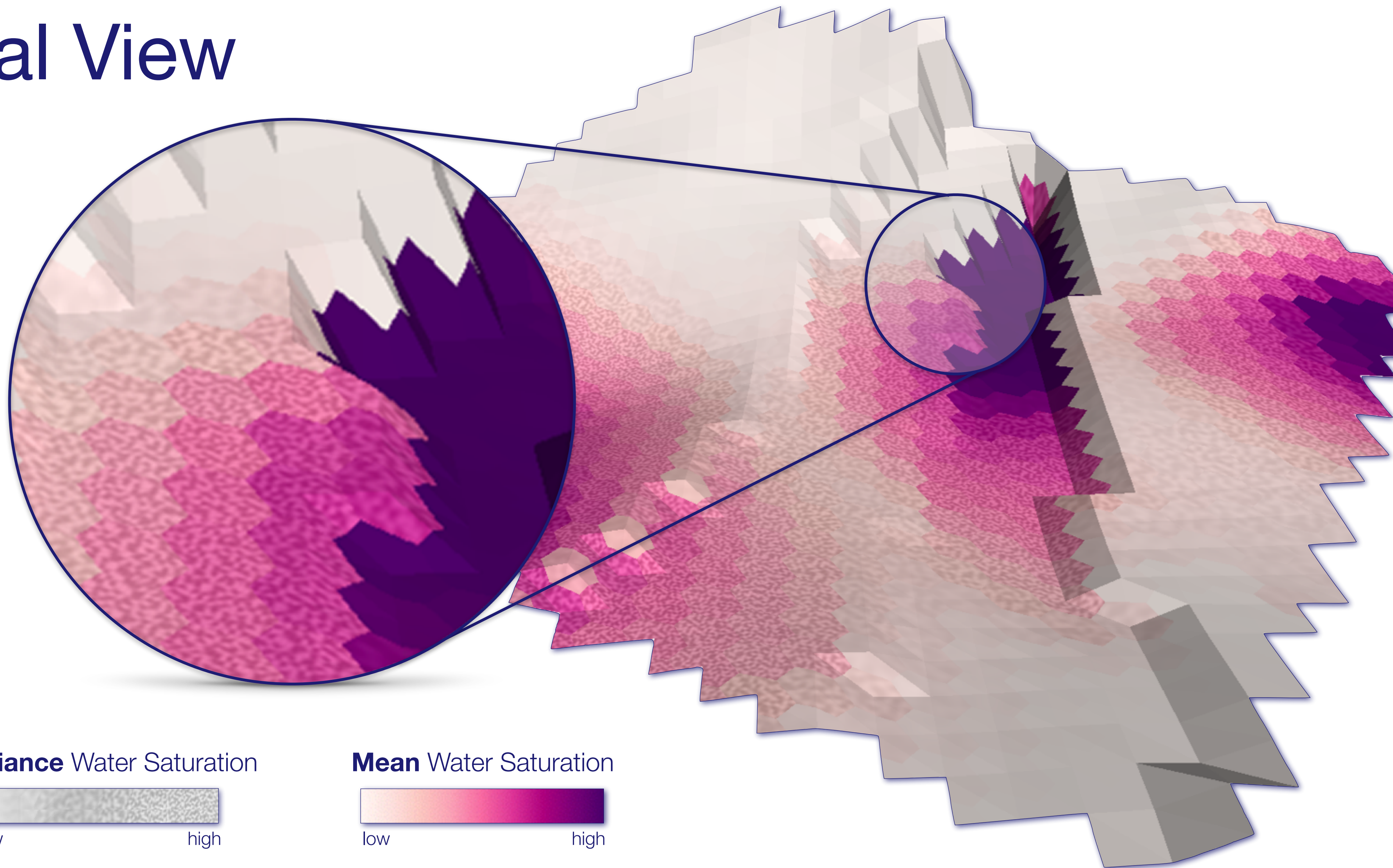
- Tasks
 - Spatial overview generation
 - Find problems in well placement
 - Detail comparison
 - Compare general production rates
 - Compare economical impact (e.g. water cut)



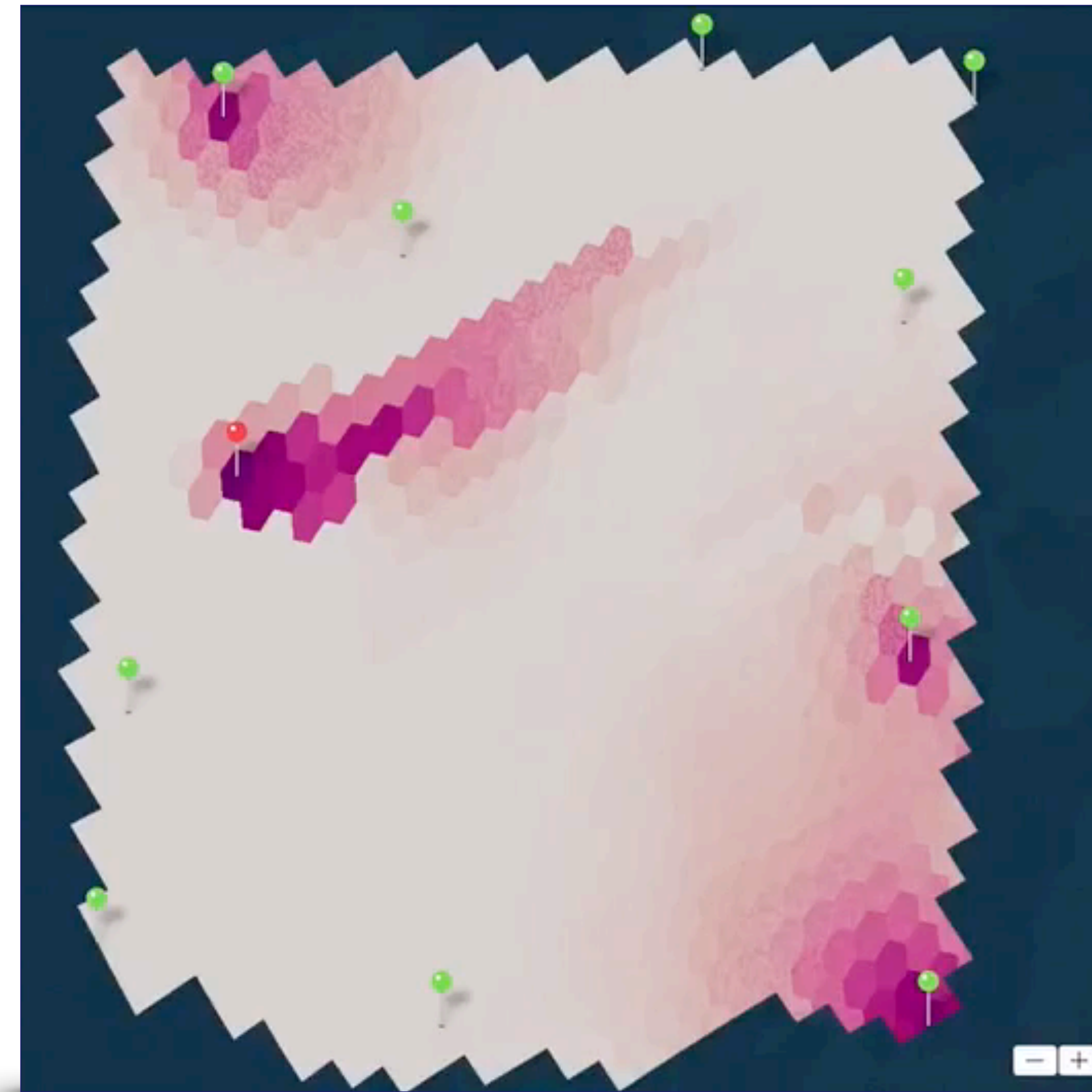
Spatial View



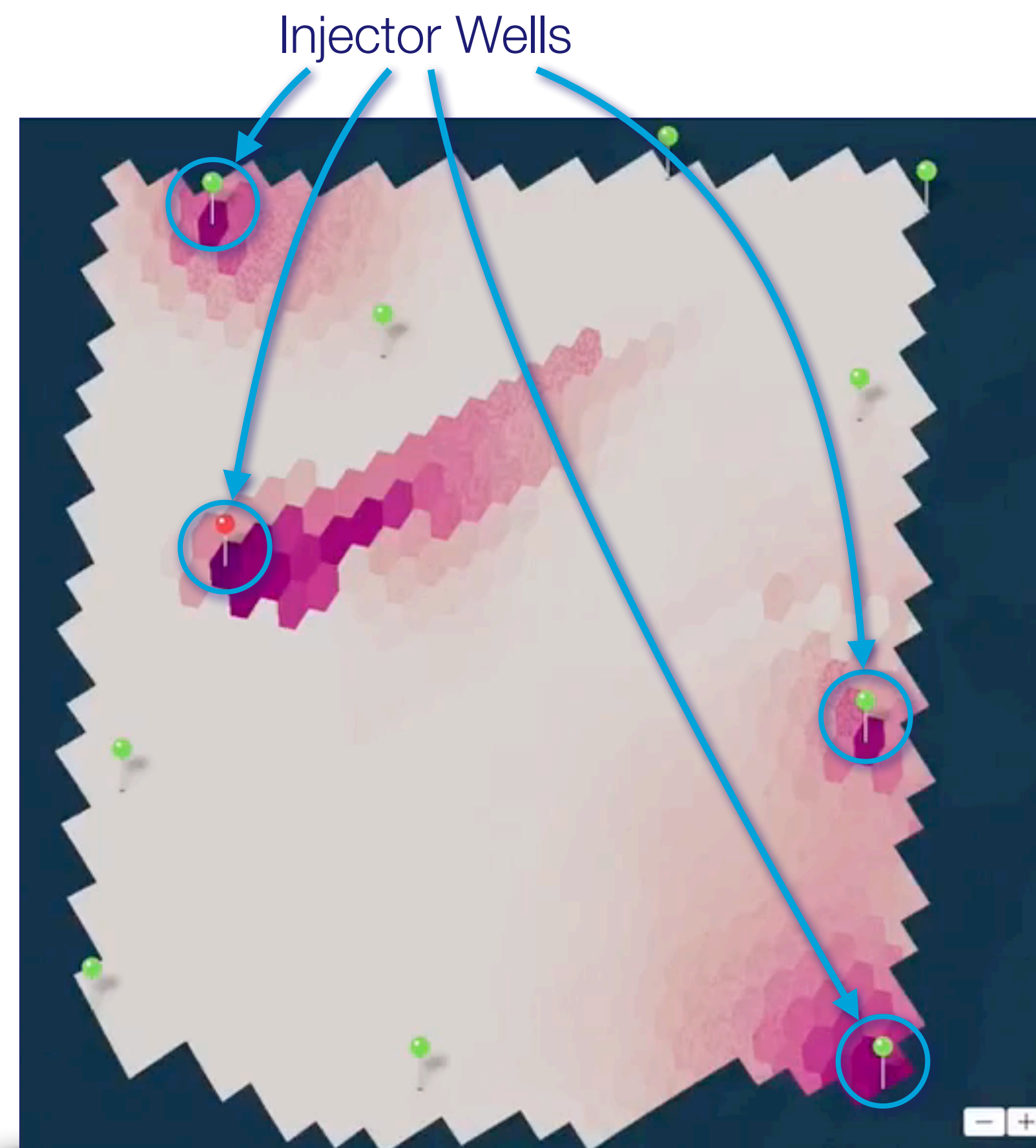
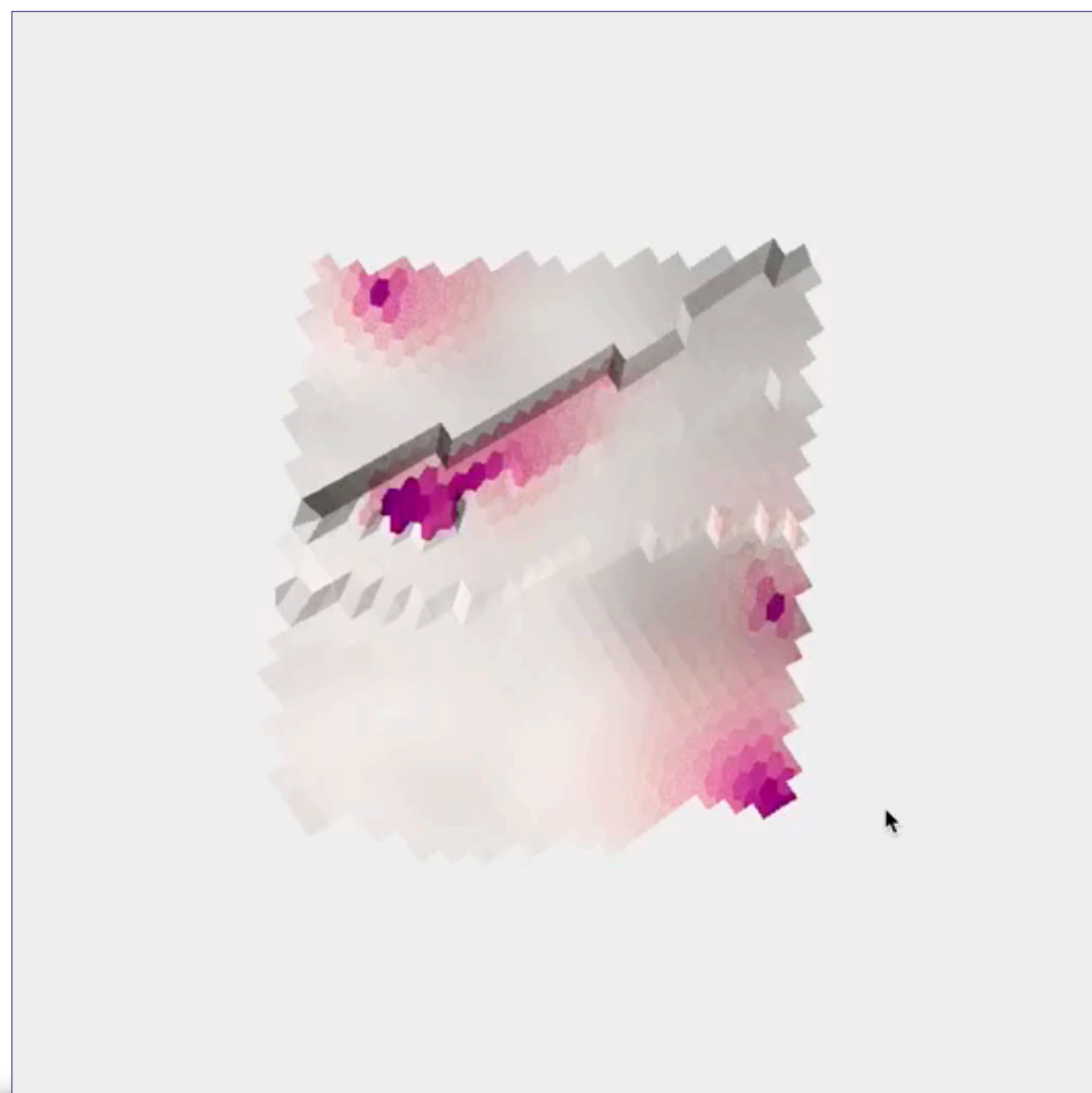
Spatial View



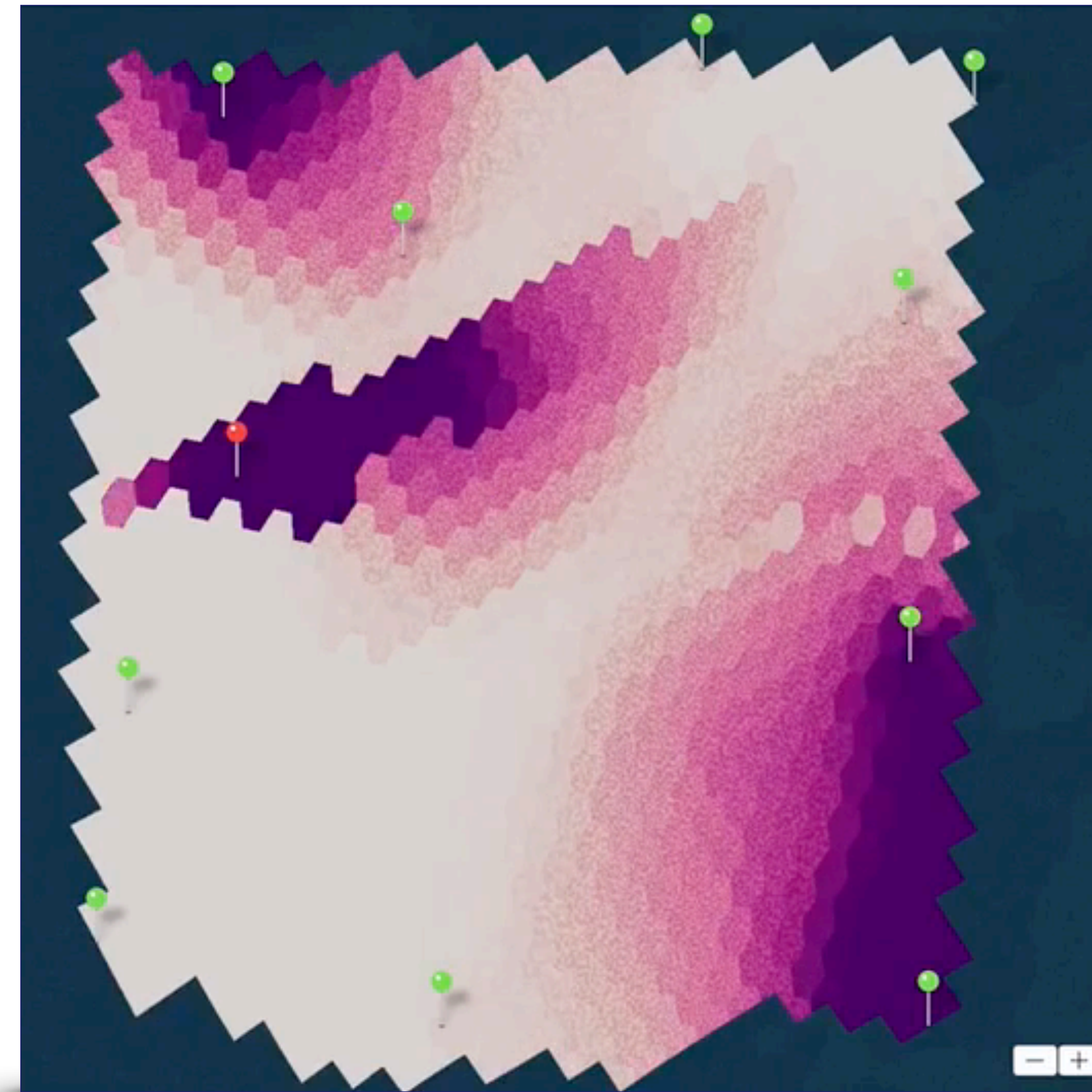
Spatial Overview I



Spatial Overview I

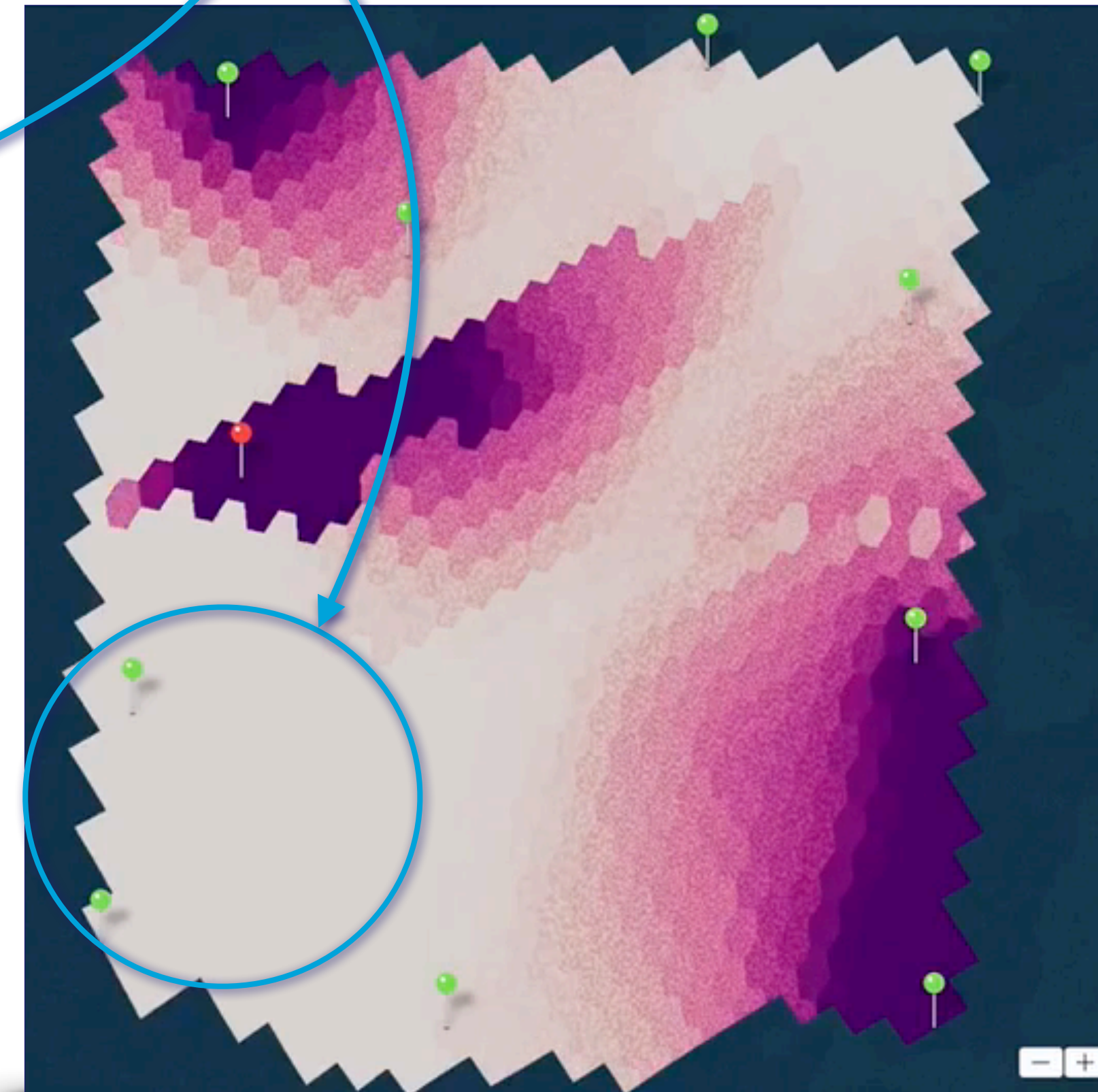
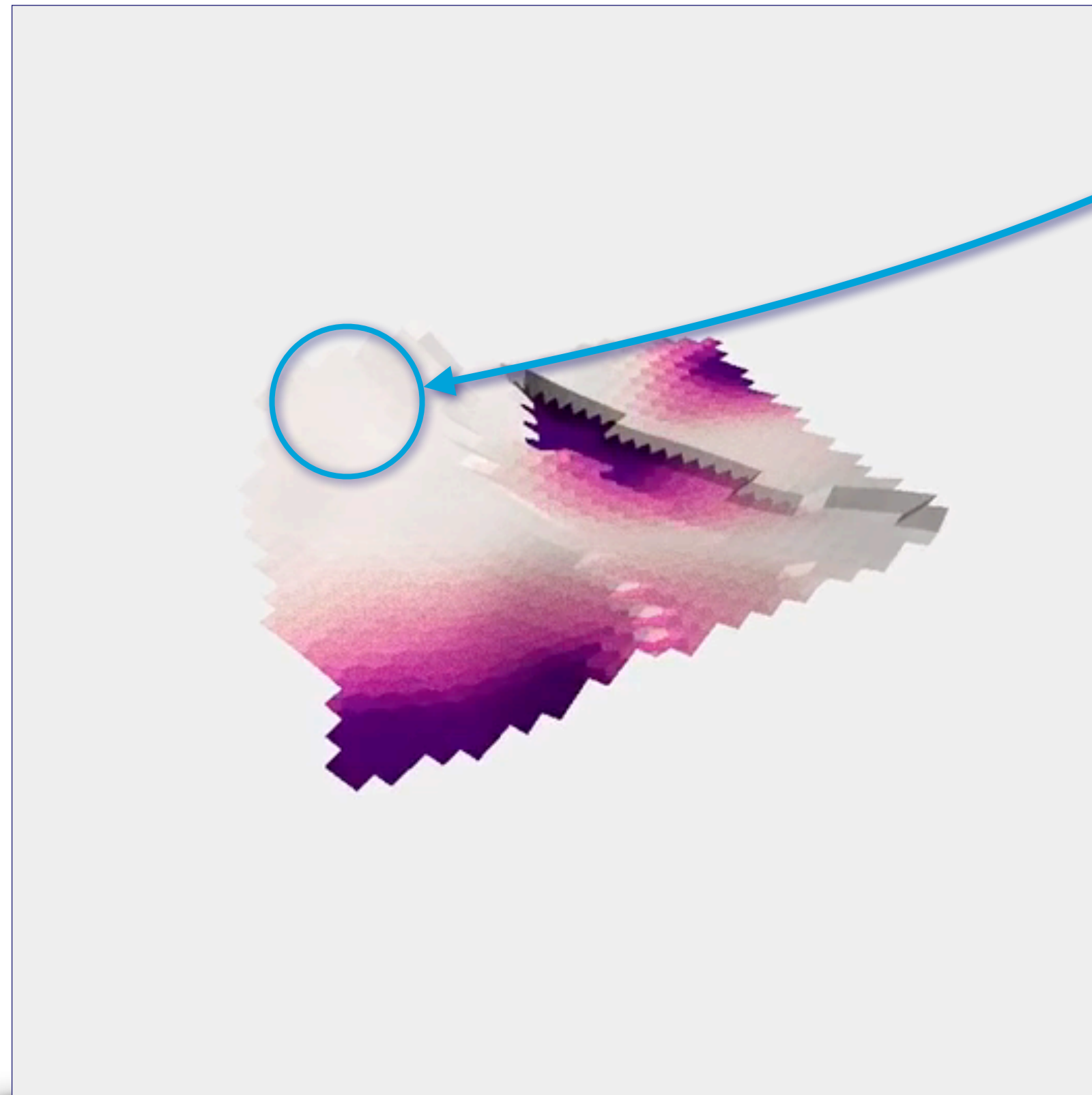


Spatial Overview I

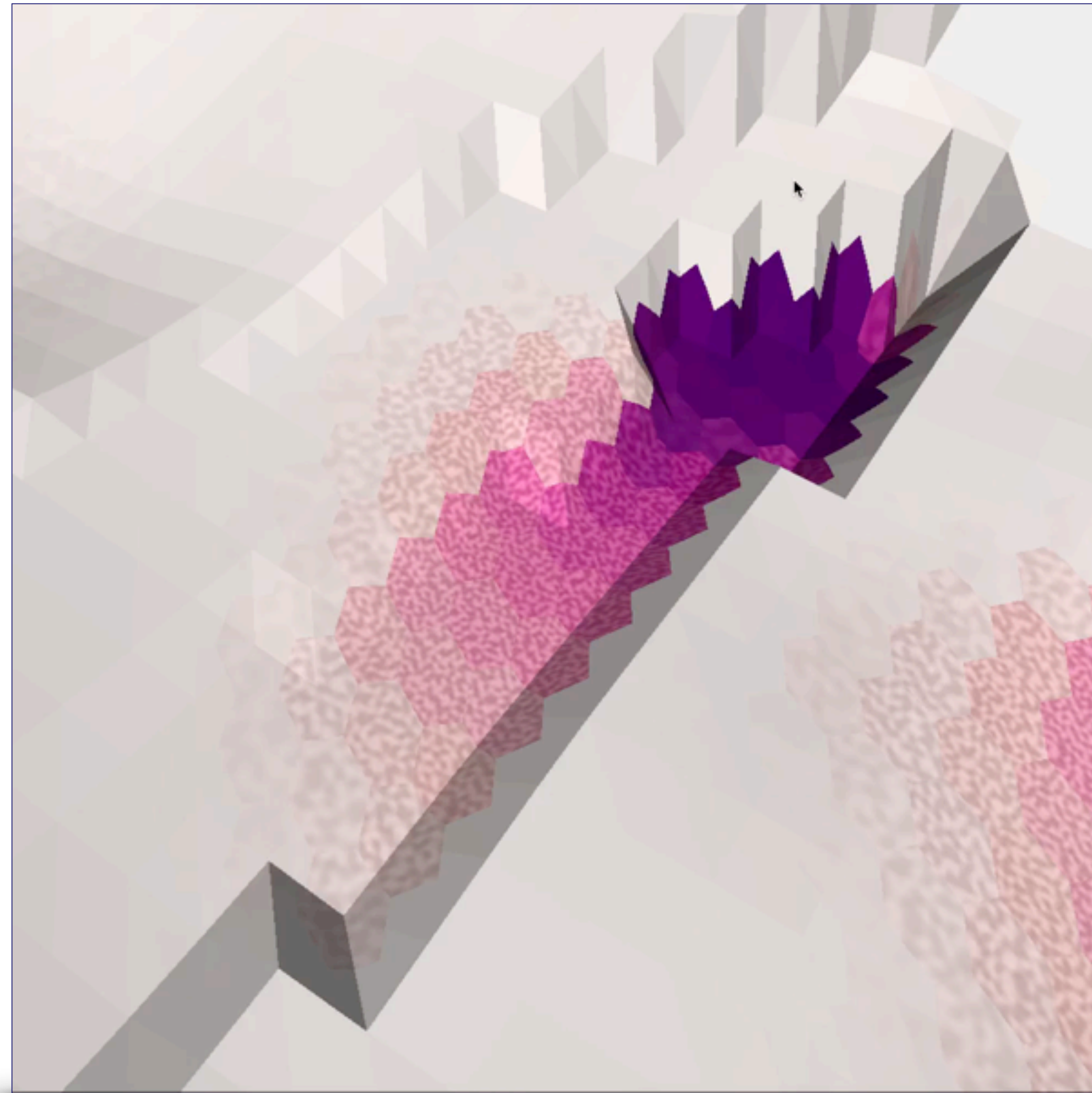


Spatial Overview I

Low Saturation/High Variance
for complete time-series

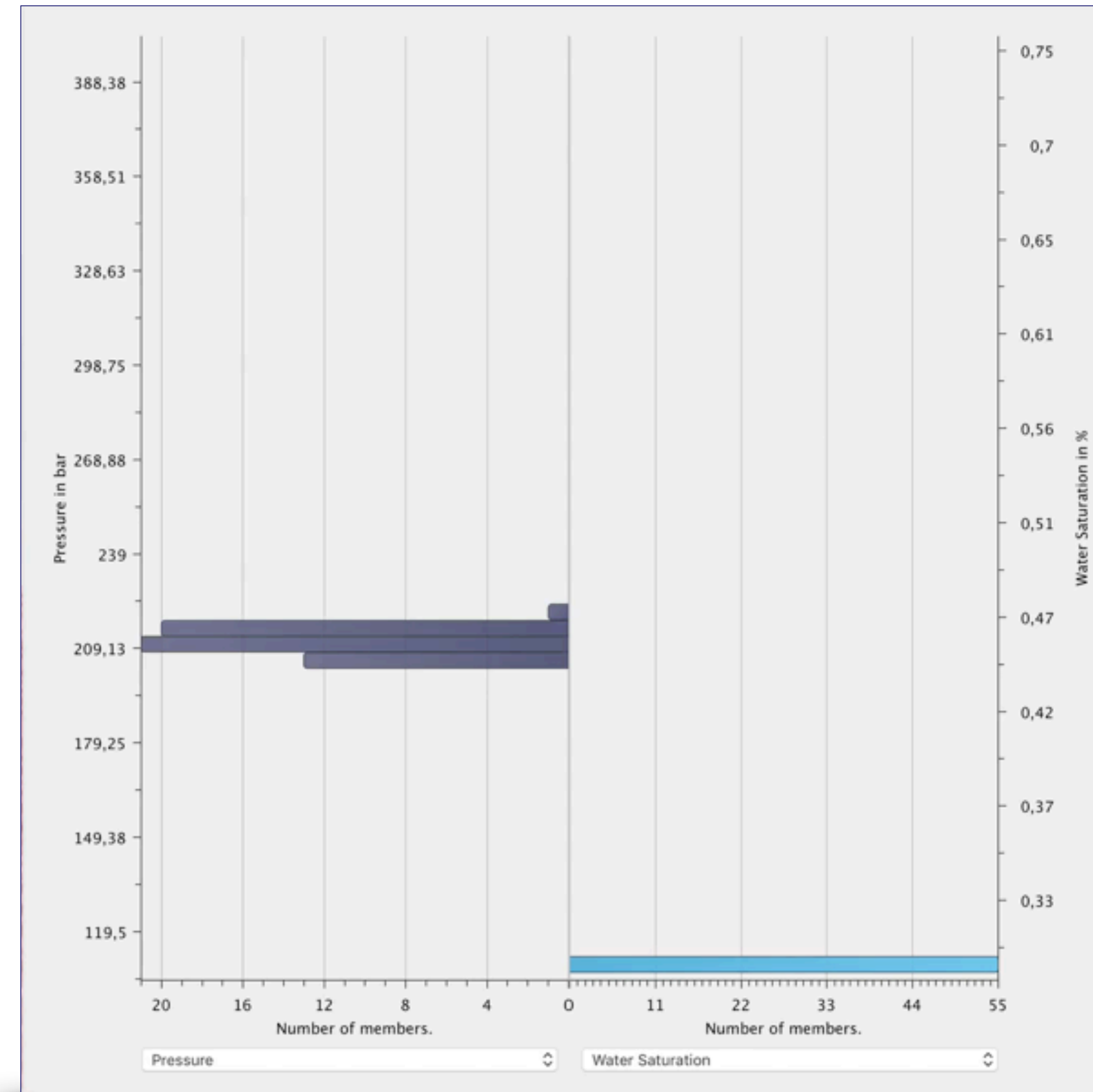


Spatial Overview II

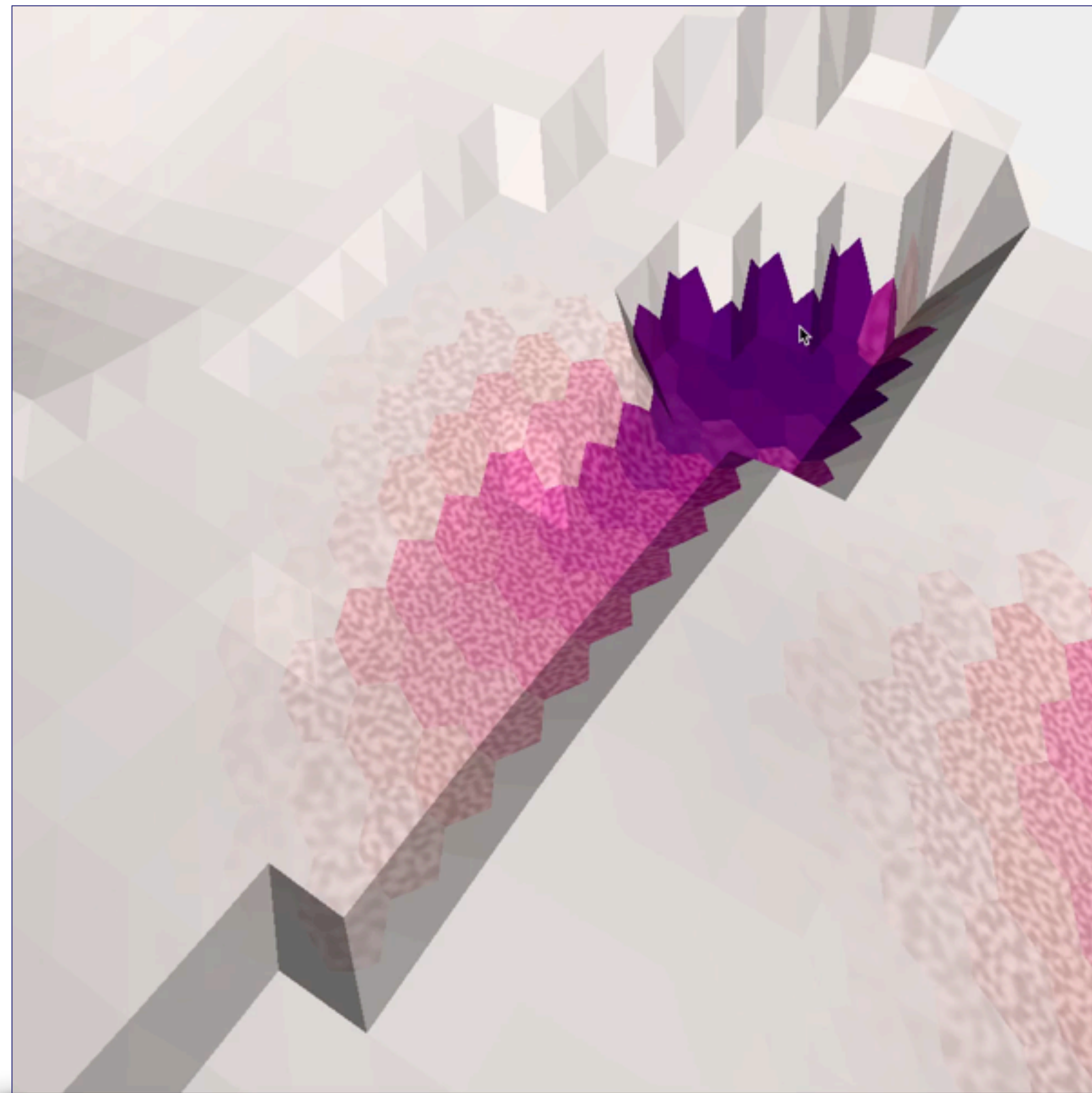


Pressure

Water Saturation

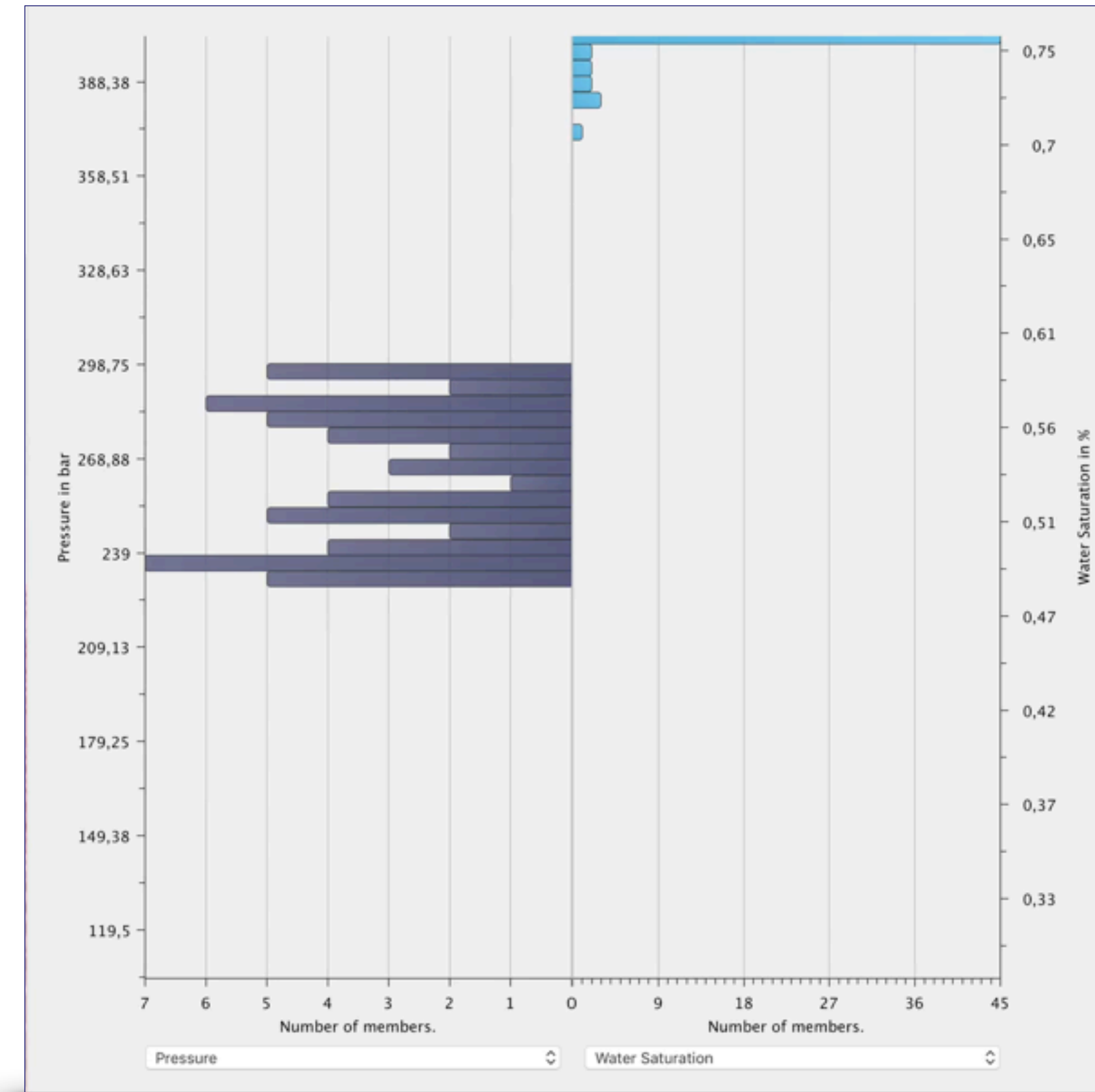


Spatial Overview II



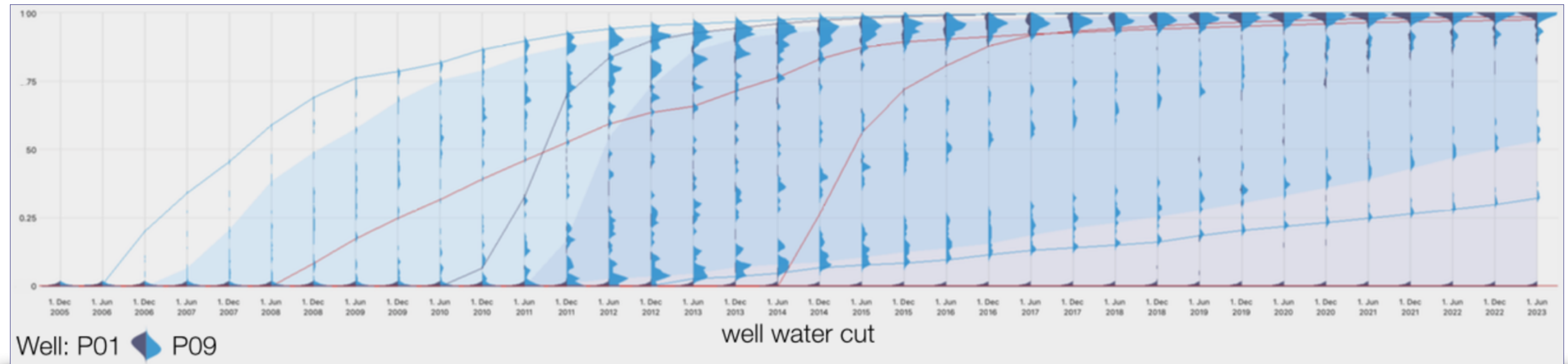
Pressure

Water Saturation

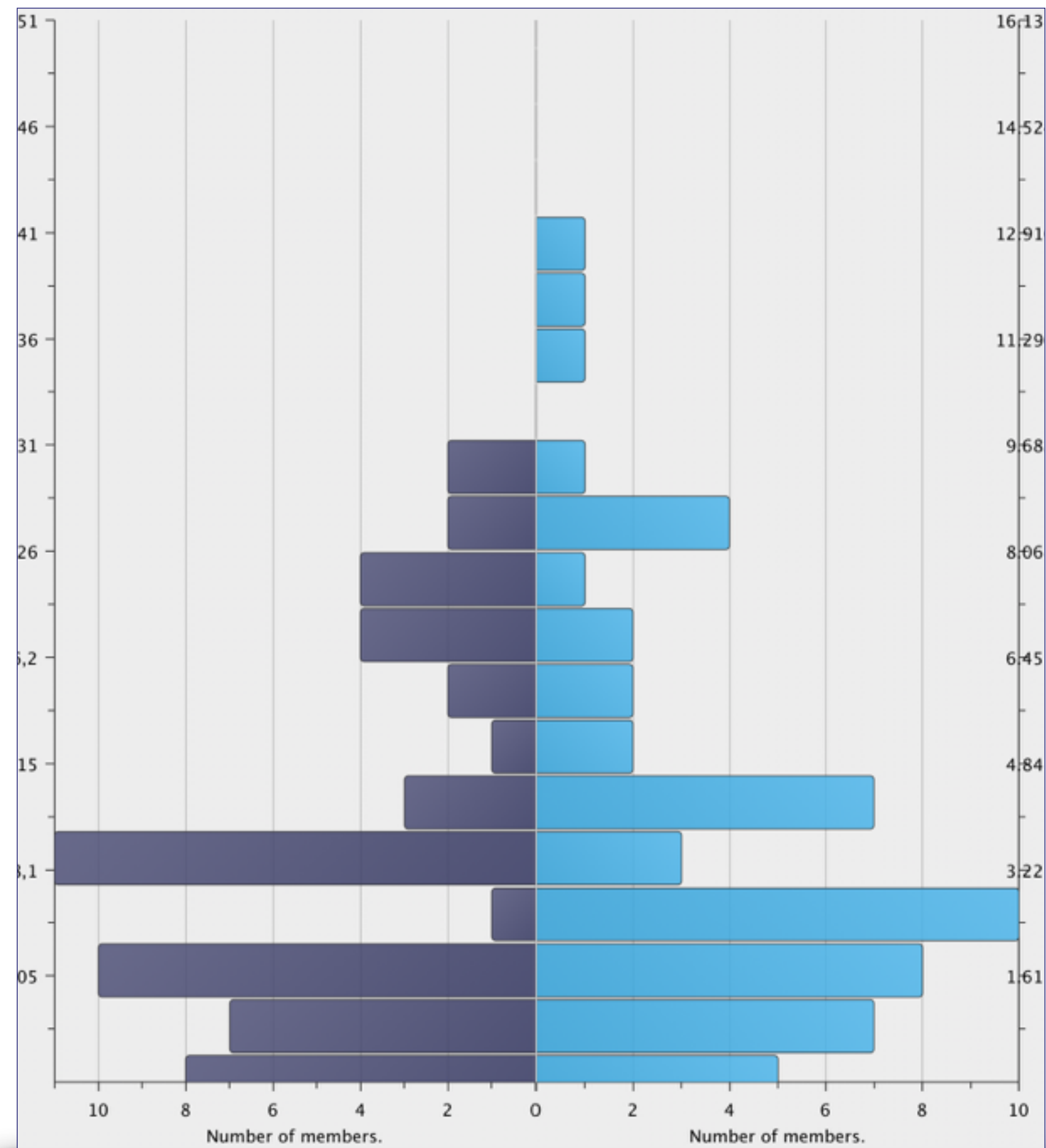


Detail Comparison

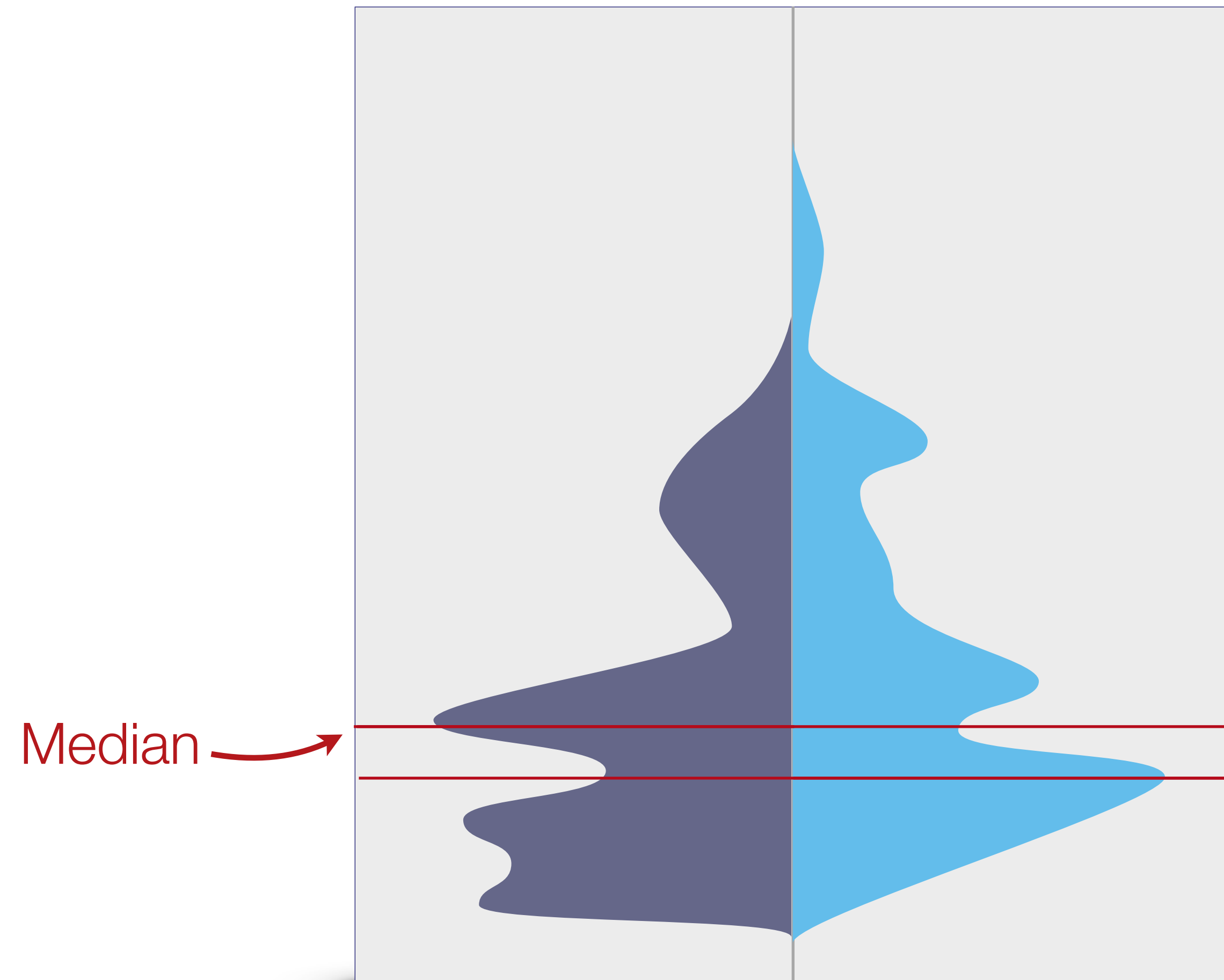
- Compare general production rates
- Compare economical impact
- **Complete temporal evolution**



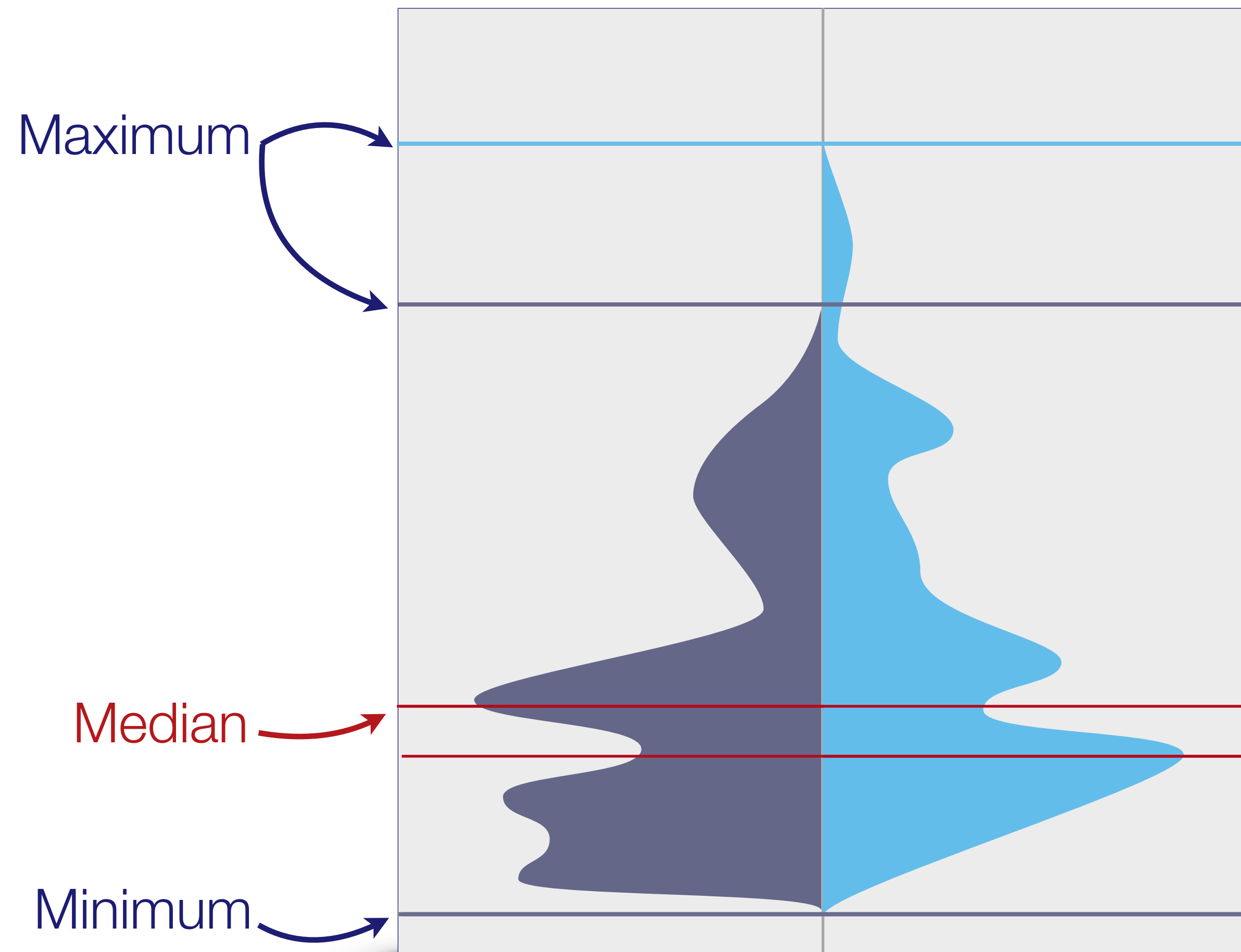
Distribution Glyph & Boxplot



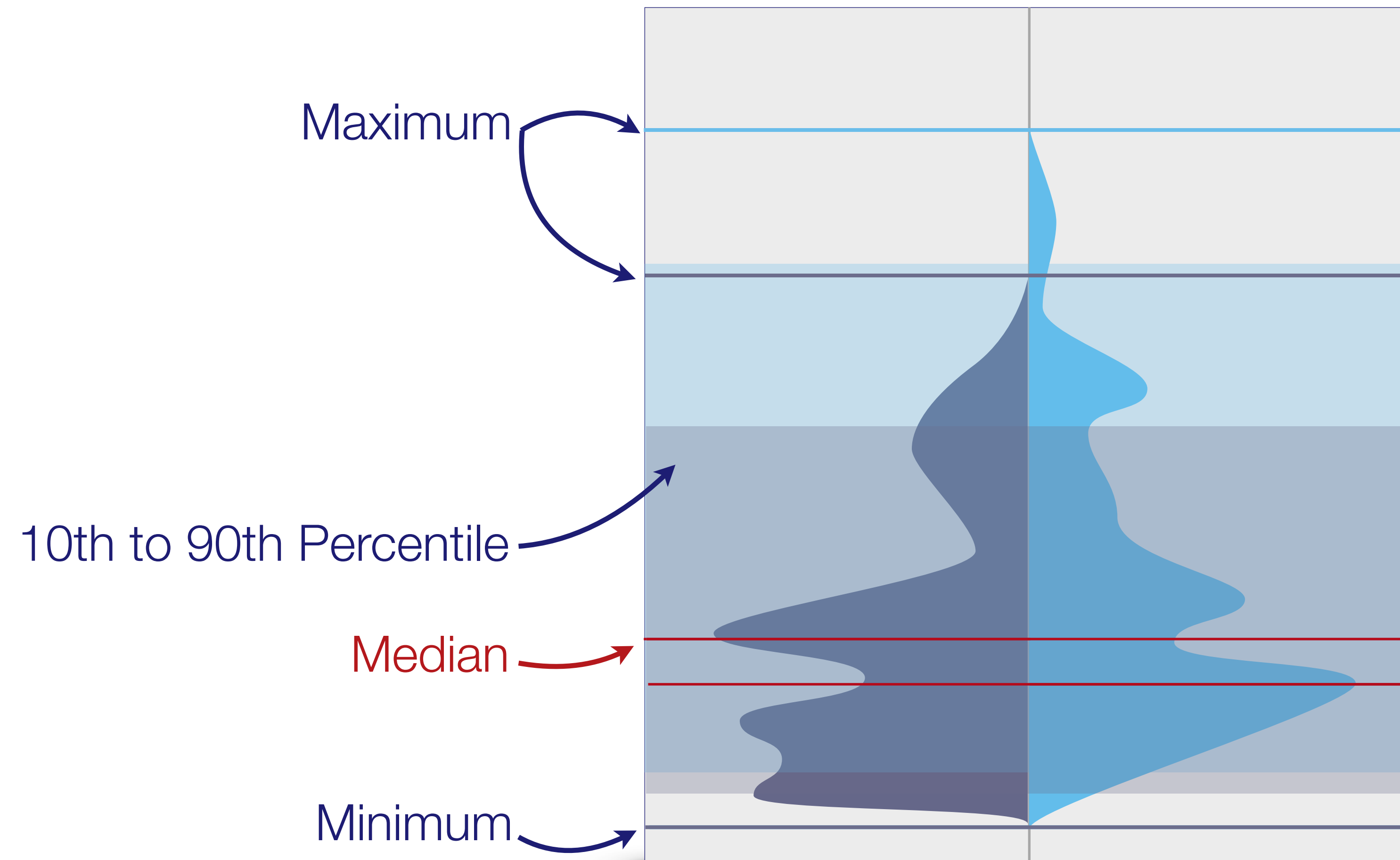
Distribution Glyph & Boxplot



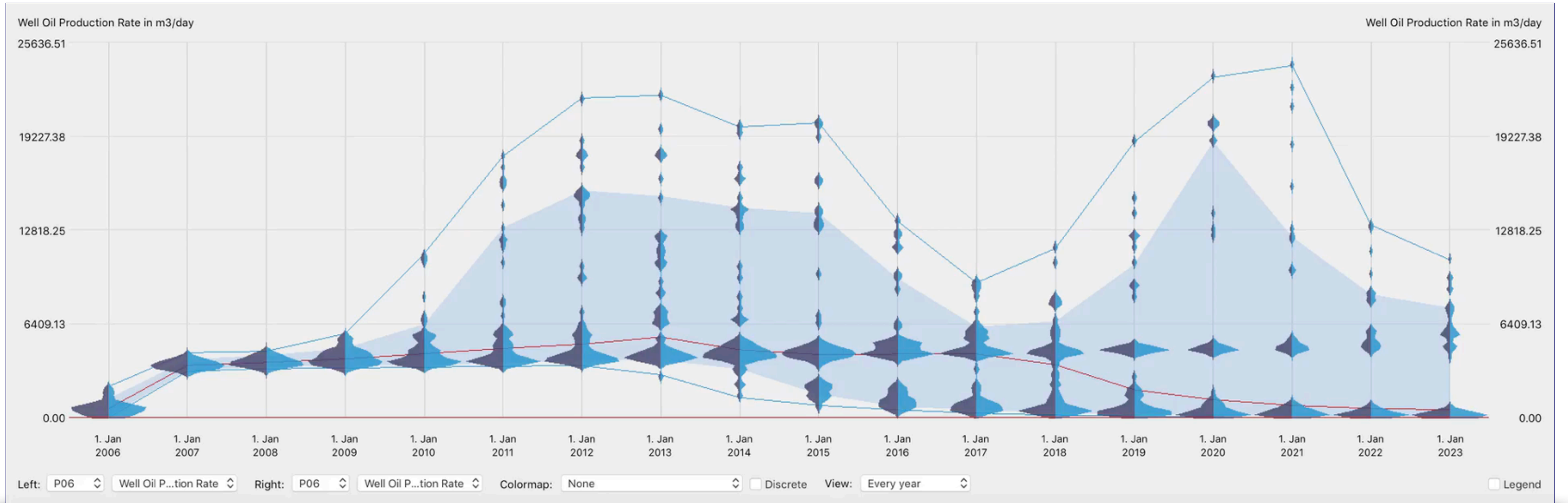
Distribution Glyph & Boxplot



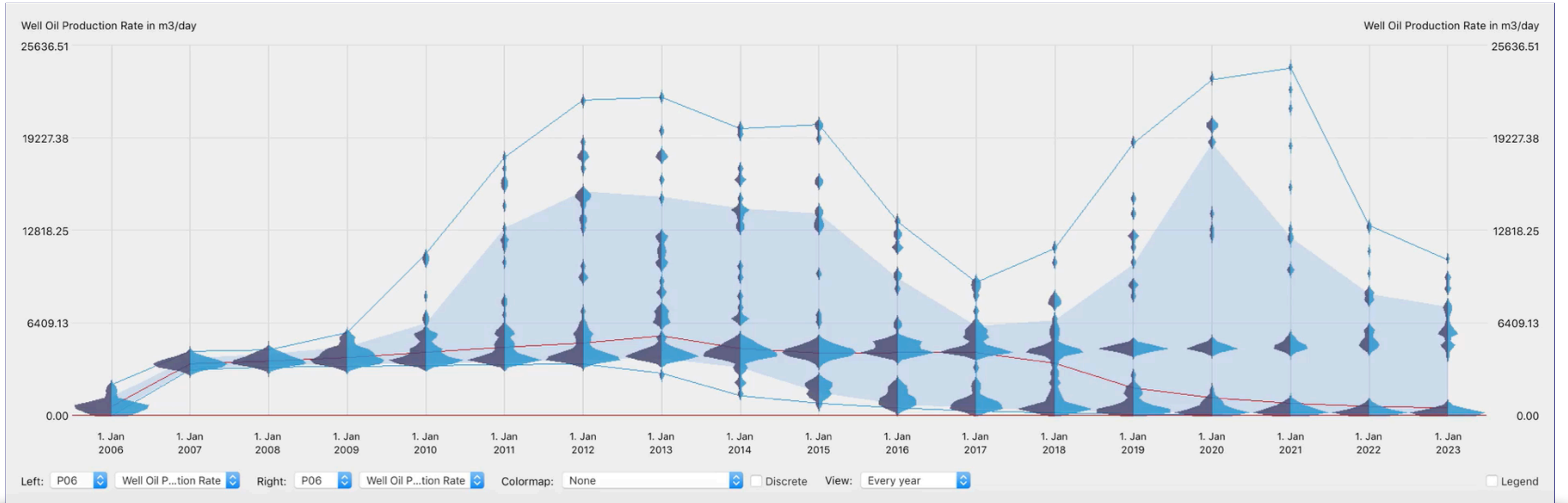
Distribution Glyph & Boxplot



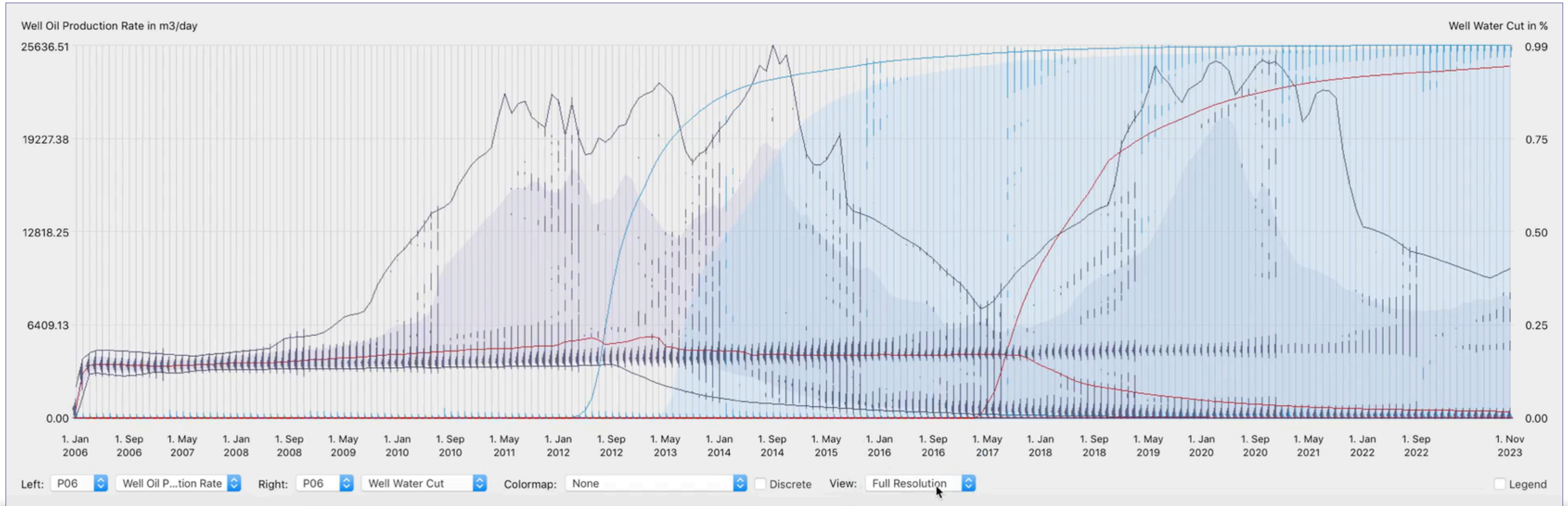
Glyph-Based Time Series



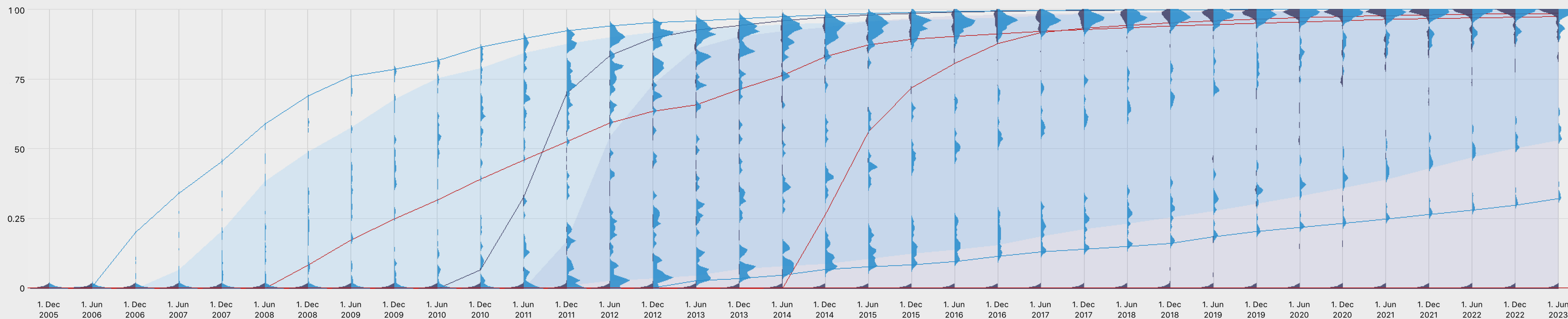
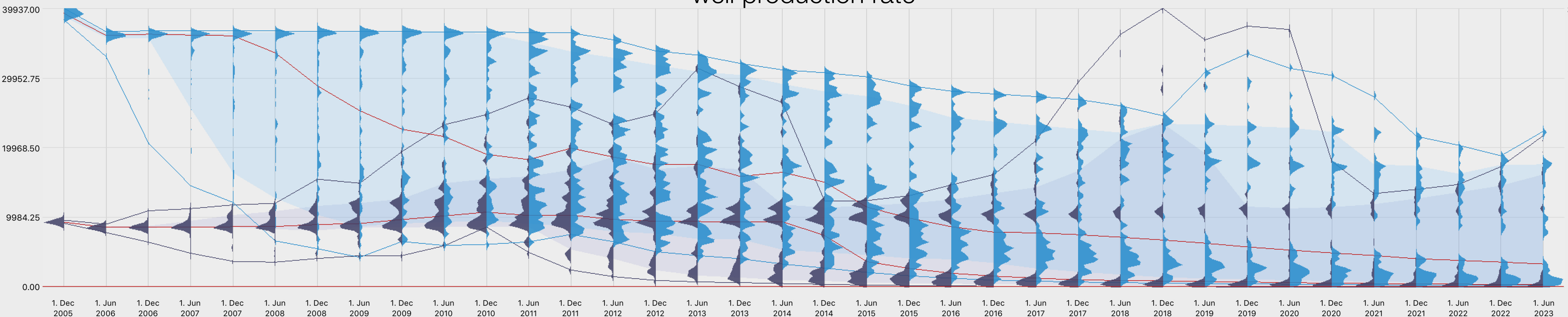
Glyph-Based Time Series



Glyph-Based Time Series



well production rate



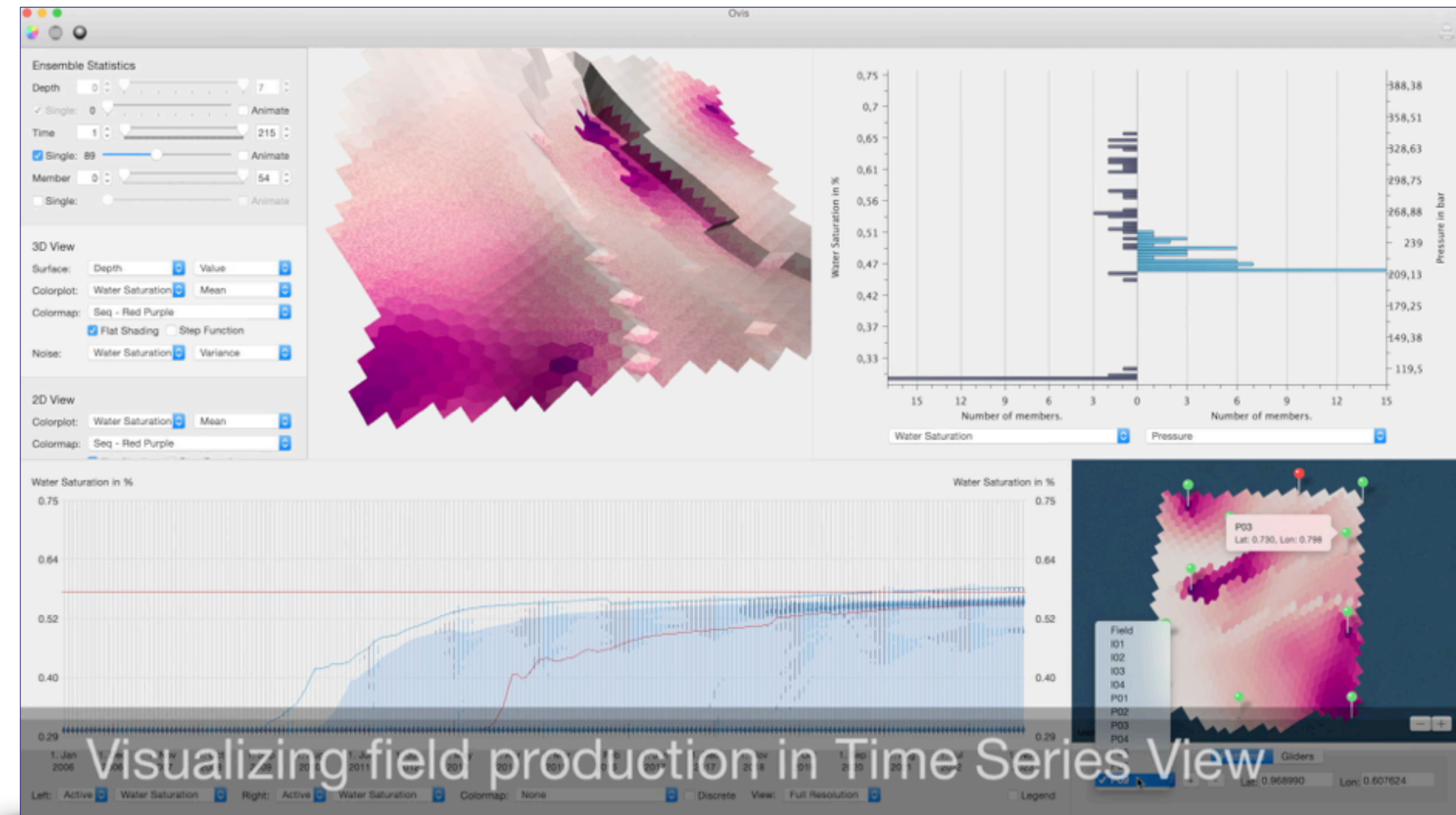
well water cut

Well: P01  P09

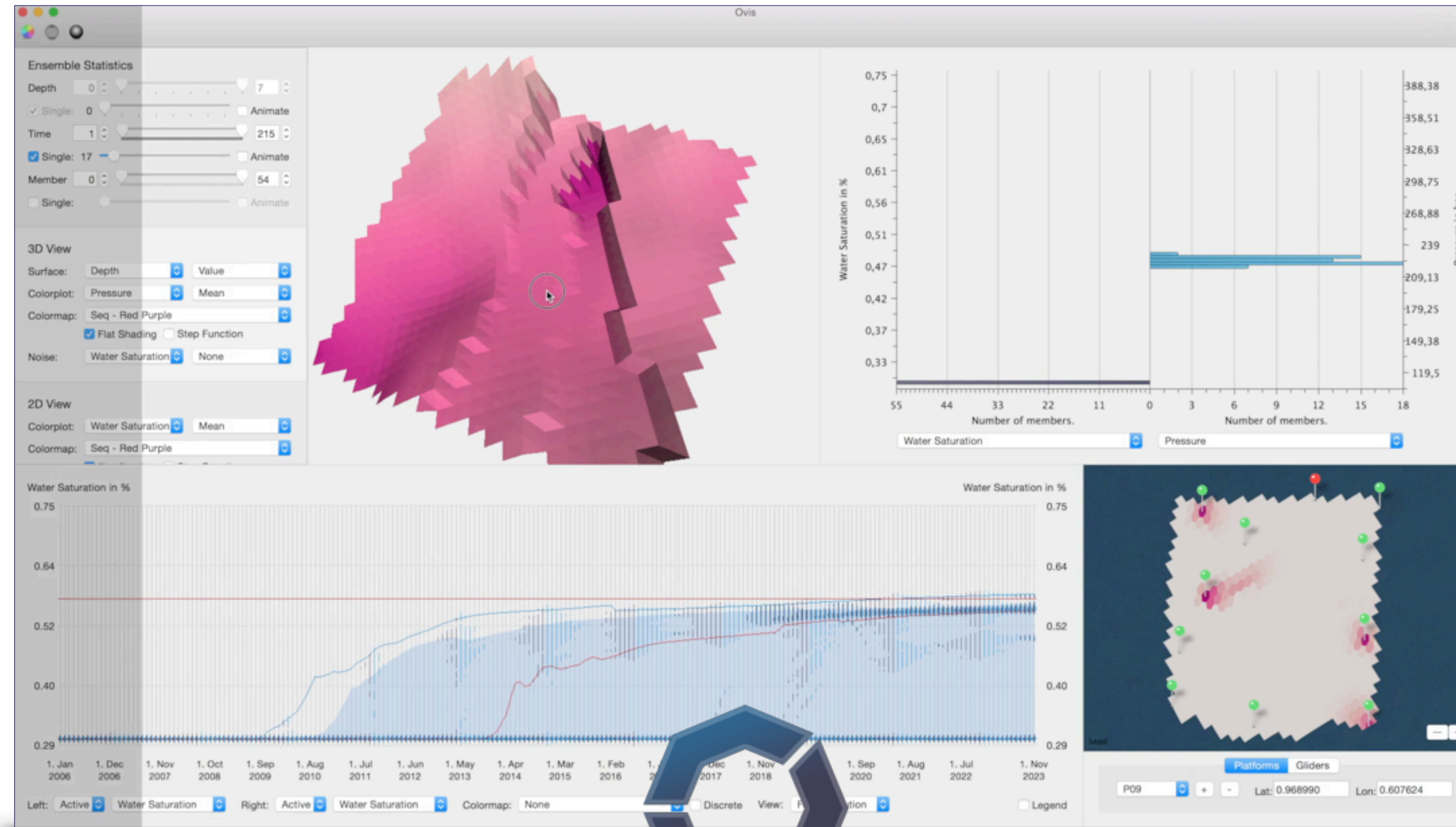
Conclusion

Conclusion & Future Work

- We present an integrated system for reservoir forecast analysis
 - Provides global overview
 - Allows informed decision making
- Future Work
 - Integrate into forecasting workflow
 - Steer forecasting request alternative well positions



Time for Questions!



ovis.thomasholt.com

 [@thomasholt](https://twitter.com/thomasholt)

