

User Engagement

Niels Drost

19 May 2021
Barcelona

User Engagement vs Requirements for a fast and scalable evaluation workflow

- Find the bottlenecks (speed, usability, features) for current users
- Get non-users to tell you why it didn't work for them
- Create awareness for solutions with potential users
- Use input gathered as requirements for (performance) improvements



Online tutorials and documentation

https://esmvalgroup.github.io/ESMValTool_Tutorial/

This lesson is being piloted (Beta version)

Home Setup Episodes Extras License Improve this page Search...

ESMValTool Tutorial

This tutorial helps you to use ESMValTool.

The Earth System Model Evaluation Tool (ESMValTool) is a community developed software toolkit that aims to facilitate the diagnosis and evaluation of the causes and model biases and inter-model spread within the CMIP model ensemble.

This tutorial is structured such that the main body of the tutorial, up to the episode 7, can be done in one sitting. From episode 8, each episode is a mini-tutorial covering an aspect of working with ESMValTool. These mini-tutorials can be appended to the main tutorial or worked through independently.

What will you learn in this course

- What is ESMValTool
- How to install ESMValTool
- How to configure ESMValTool for your local system
- How to run ESMValTool
- How to work with ESMValTool's suite of preprocessors
- How to debug your recipes
- How to access and deploy recipes from the ESMValTools gallery (Advanced)
- How to develop your own diagnostics and recipes (Advanced)
- How to contribute your recipes and diagnostics back into ESMValTool (Advanced)
- How to include new observational datasets (Advanced)

Prerequisites

The prerequisites for the tutorial are listed on the [tutorial setup page](#).

https://docs.esmvaltool.org/en/latest/

Welcome to ESMValTool's documentation!

ESMValTool

- Introduction
 - About
 - Contact
 - License
 - What ESMValTool can do for you
- Getting started
 - Installation
 - Configuration
 - Running
 - Output
- Gallery
- Available recipes
 - Atmosphere
 - Climate metrics
 - Future projections
 - IPCC
 - Land
 - Ocean
 - Other
- Obtaining input data
 - Models

Requirement: Documentation of how to “optimally” use tools and services



Live tutorials



https://esmvalgroup.github.io/ESMValTool_Tutorial/

This lesson is being piloted (Beta version)

Home Setup Episodes Extras License Improve this page Search...

ESMValTool Tutorial

This tutorial helps you to use ESMValTool.

The Earth System Model Evaluation Tool (ESMValTool) is a community developed software toolkit that aims to facilitate the diagnosis and evaluation of the causes and model biases and inter-model spread within the CMIP model ensemble.

This tutorial is structured such that the main body of the tutorial, up to the episode 7, can be done in one sitting. From episode 8, each episode is a mini-tutorial cover aspect of working with ESMValTool. These mini-tutorials can be appended to the main tutorial or worked through independently.

What will you learn in this course

- What is ESMValTool
- How to install ESMValTool
- How to configure ESMValTool for your local system
- How to run ESMValTool
- How to work with ESMValTool's suite of preprocessors
- How to debug your recipes
- How to access and deploy recipes from the ESMValTools gallery (Advanced)
- How to develop your own diagnostics and recipes (Advanced)
- How to contribute your recipes and diagnostics back into ESMValTool (Advanced)
- How to include new observational datasets (Advanced)

Prerequisites

The prerequisites for the tutorial are listed on the [tutorial setup page](#).



Requirement: Tutorials given using large central infrastructure



Issues and Discussions

Why GitHub? Team Enterprise Explore Marketplace Pricing Search Sign in Sign up

ESMValGroup / ESMValTool

Code Issues 156 Pull requests 55 Discussions Actions Projects 3 Wiki Security Insights

Pinned issues

- Monthly ESMValTool meeting March #2009 opened on 2 Feb by bouweandela
- Dates for the next (virtual) ESMValTool Workshop - survey #2067 opened 5 days ago by hb326

is:issue is:open Labels 31 Milestones 2 New issue

156 Open 684 Closed

- Outdated reference Déandreis et al. (2014) in documentation #2075 opened 2 minutes ago by katjaveigel
- Add figures 8 and 10 to recipe_bock20jgr diagnostic #2073 opened 4 days ago by schlunna
- New recipe for climate impact metrics diagnostic #2071 opened 5 days ago by Peter9192
- Merging IPCC analyses into a public branch community diagnostic in scientific review question

Search or jump to... Pull requests Issues Marketplace Explore

ESMValGroup / ESMValTool

Code Issues 171 Pull requests 60 Discussions Actions Projects 3 Wiki Security Insights

Watch 31 Unstar

General

5 years ESMValTool

axel-lauer

Search all discussions New Top: All Answered Unanswered Label New discussion

Categories

- View all
- General
- Ideas
- New to ESMValTool
- Q&A
- Show and tell

Most helpful Last 30 days

- zkliaus 1

Code of conduct

- Version numbers bouweandela started 13 days ago in Ideas 5
- Resources on climate indices bouweandela started 12 days ago in Ideas 0
- Website bouweandela started 12 days ago in Ideas 0
- Image gallery bouweandela started 12 days ago in Ideas 1
- Automated formatting bouweandela started 13 days ago in Ideas 1
- What is fastest scheme in ESMValTools regrd preprocessor? ledm asked 25 days ago in Q&A - Unanswered 3

Requirement: Enough time and funding to help users solve problems



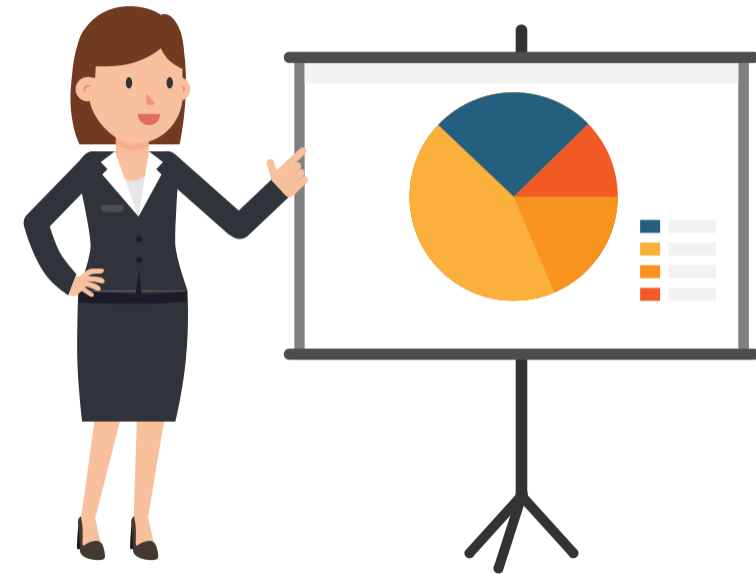
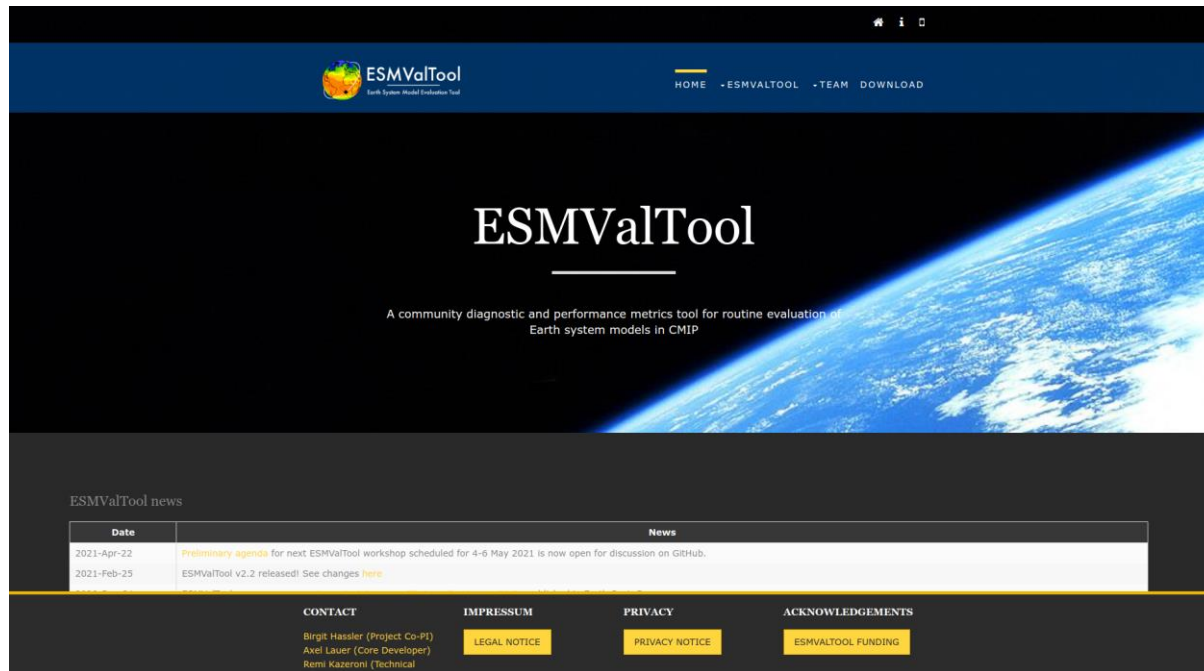
Online community meetings and workshops



Requirement: Continued engagement with user/developer community



Website and outreach



Requirement: Success stories to inspire new users



This project has received funding from the European Union's Horizon 2020 research and innovation programme under grant agreement N°824084



Our website
<https://is.enes.org/>



Follow us on Twitter !
@ISENES_RI



Contact us at
is-enes@ipsl.fr